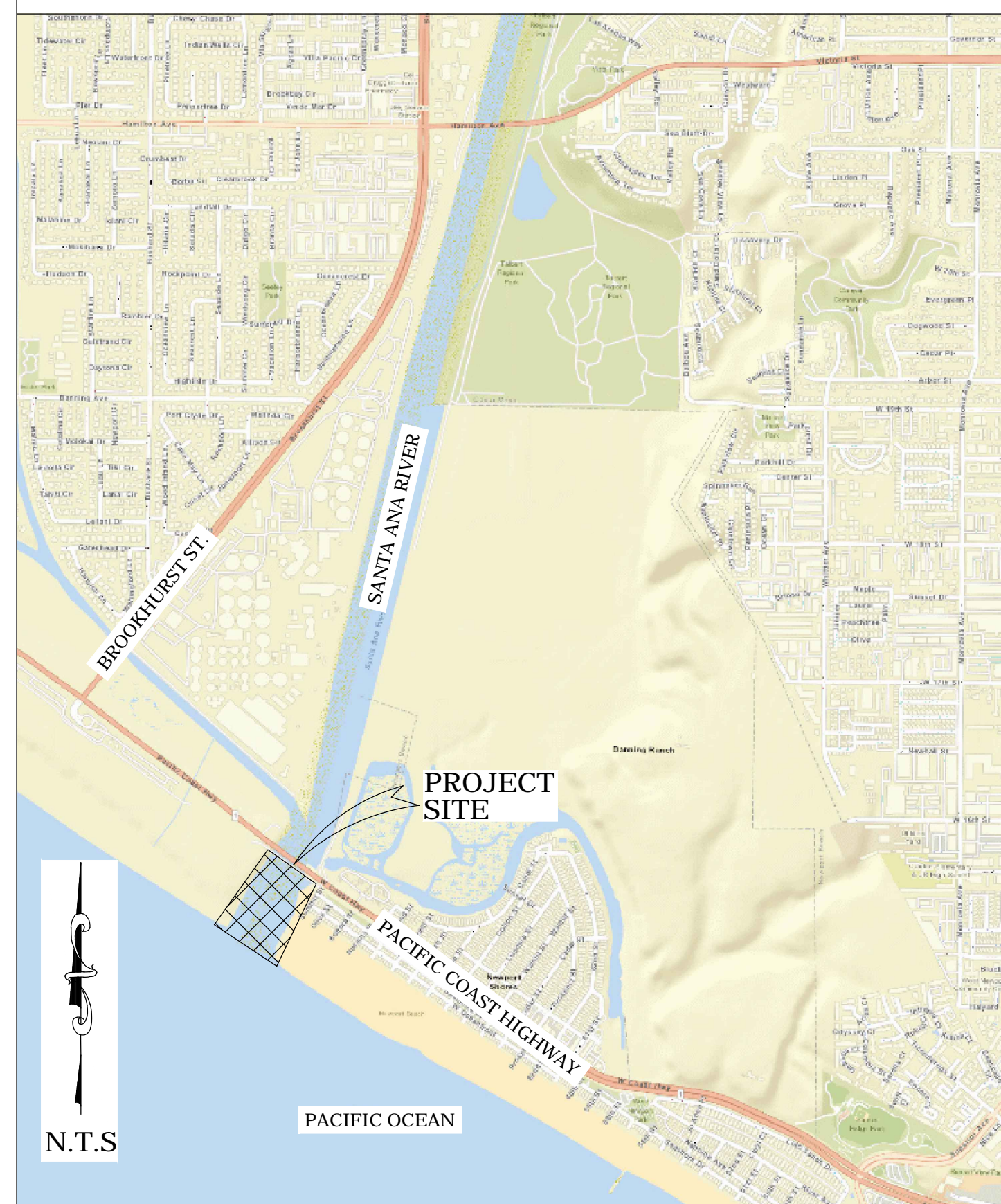
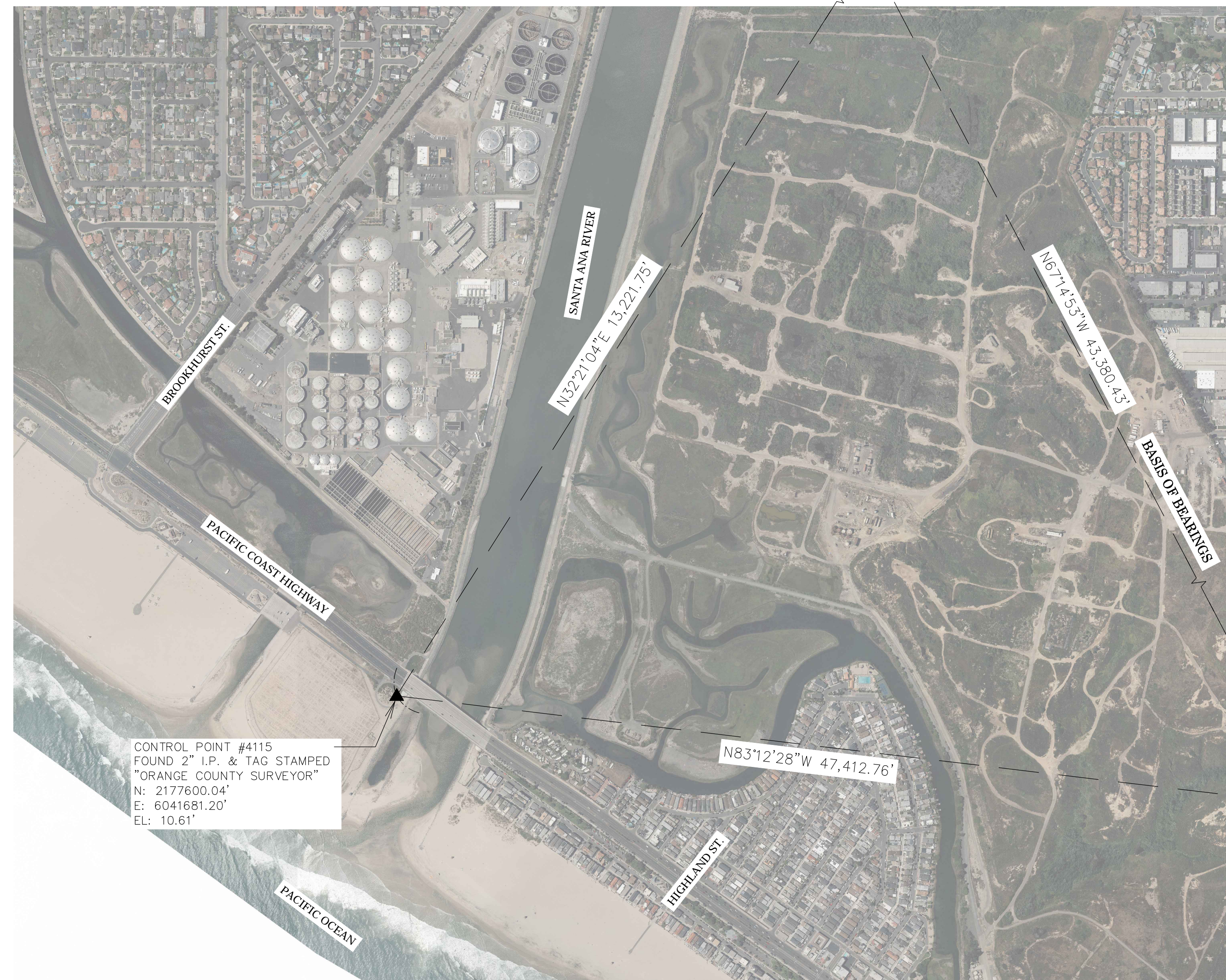


1918 ORDINARY HIGH WATER MARK



N.T.S



BASIS OF BEARINGS

THE BASIS OF BEIRINGS FOR THIS SURVEY IS BASED ON THE CALIFORNIA COORDINATE SYSTEM (CCS83), ZONE VI, NAD 83, OCS (2017.50) EPOCH ADJUSTMENT, AS DETERMINED LOCALLY BY A LINE BETWEEN CONTINUOUS GLOBAL POSITIONING STATIONS CGPS STATIONS (TRAK) AND (FVPK) BEING NORTH 67°14'53" WEST AS DERIVED FROM THE COORDINATES PUBLISHED BY THE CALIFORNIA SPATIAL REFERENCE CENTER (CSRC) ALONG WITH DATA SHEETS ON FILE IN THE OFFICE OF THE ORANGE COUNTY SURVEYOR.

HORIZONTAL DATUM

COORDINATES SHOWN ARE BASED ON THE CALIFORNIA COORDINATE SYSTEM (CCS83), ZONE VI, NAD 83, OCS (2017.50) EPOCH ADJUSTMENT.

ALL DISTANCES SHOWN ARE GRID, UNLESS OTHERWISE NOTED. TO OBTAIN GROUND DISTANCES MULTIPLY GRID BY A COMBINED FACTOR OF 1.00002739.

THIS COMBINATION FACTOR WAS DERIVED AT PT #4115,
N:2177600.04', E:6041681.20', EL:10.6'

ALL DISTANCES ARE BASED ON THE U.S. SURVEY FOOT.

VERTICAL DATUM

VERTICAL DATUM: NAVD 88

BENCHMARK: AN ORTHOMETRIC HEIGHT OF 10.61' WAS COMPUTED AT CONTROL POINT #4115 SHOWN HEREIN

ELEVATIONS WERE DERIVED FROM STATIC GNSS MEASUREMENTS BY COMBINING GEOID12B WITH CCS83, ZONE VI, 2017.50 EPOCH ELLIPSOID HEIGHTS, HOLDING THE ELLIPSOID HEIGHT ON CPSS STATION FVPK OF -35.603' AS SHOWN ON THE HORIZONTAL CONTROL DATA SHEET NAMED "FVPK", ON FILE IN THE OFFICE OF THE ORANGE COUNTY SURVEYOR. THE GEOID HEIGHT COMPUTED AT "FVPK" IS -115.773'

SHEET INDEX

SHEET	NO.	DESCRIPTION
SHEET	1	TITLE SHEET
SHEET	2-3	BOUNDARY MAP
SHEET	4	SIGN PLACEMENT EXHIBIT

PURPOSE OF SURVEY

THE PURPOSE OF THE SURVEY IS TO PROVIDE FIELD LAYOUT OF THE 1918
ORDINARY HIGH WATER MARK PER RECORD OF SURVEY 35/9-13 AS IT
CROSSES THE SANTA ANA RIVER MOUTH OUTLET. OCPW OPERATION AND
MAINTENANCE WILL PLACE PERMANENT SIGNS AT THESE LOCATIONS AS SHOWN
ON SHEET 4 OF 4 HEREIN

FOUND CGPS "TRAK"
N: 2171992.61'
E: 6088761.19'
THIS IS A CONTINUOUS GPS STATION
(CGPS) AND IS PART OF THE CALIFORNIA
SPATIAL REFERENCE NETWORK (CSRN).
FROM WHICH DATA CAN BE DOWNLOADED.
HERE: [HTTP://SOPACCSRC.UCSB.EDU](http://SOPACCSRC.UCSB.EDU)

SENIOR LAND SURVEYOR'S CERTIFICATE:

THIS MAP CORRECTLY REPRESENTS A SURVEY MADE BY ME
OR UNDER MY DIRECTION IN CONFORMANCE WITH
REQUIREMENTS OF THE PROFESSIONAL LAND SURVEYOR'S
ACT; THIS 23RD DAY OF SEPTEMBER, 2021.

MICHAEL KUBISTY, PLS. SENIOR LAND SURVEYOR

DEPUTY COUNTY SURVEYOR'S STATEMENT:

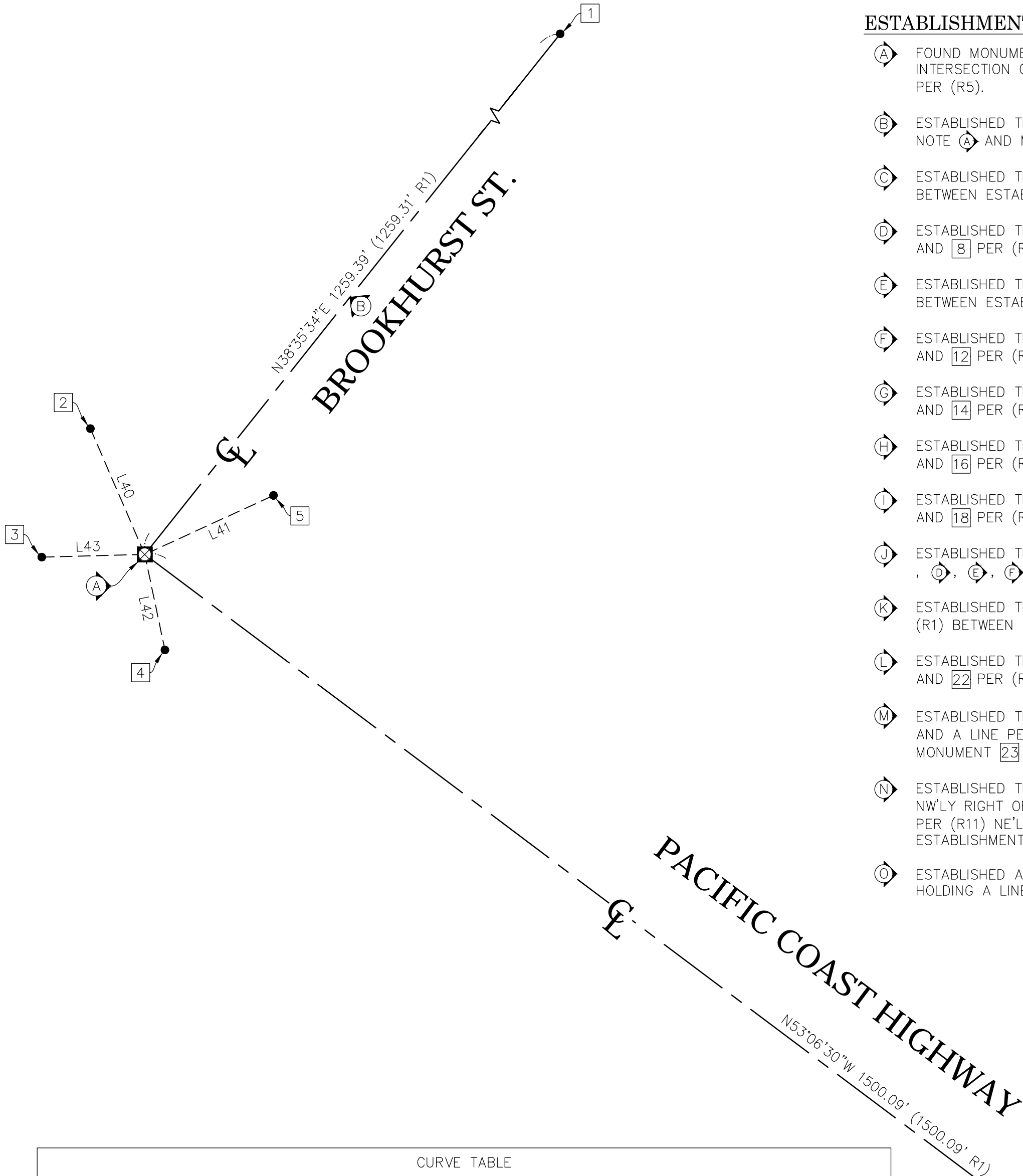
THIS MAP HAS BEEN EXAMINED IN ACCORDANCE WITH THE
PROFESSIONAL LAND SURVEYOR'S ACT; THIS 23RD DAY
OF SEPTEMBER, 2021.

WADE WEAVER, PLS. DEPUTY COUNTY SURVEYOR

U.S. *Survey*
Foot

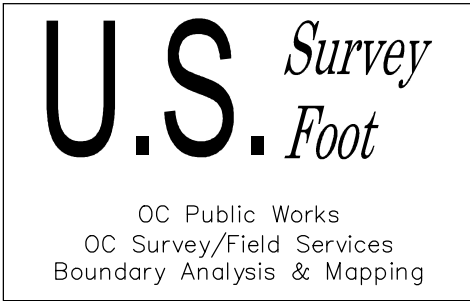
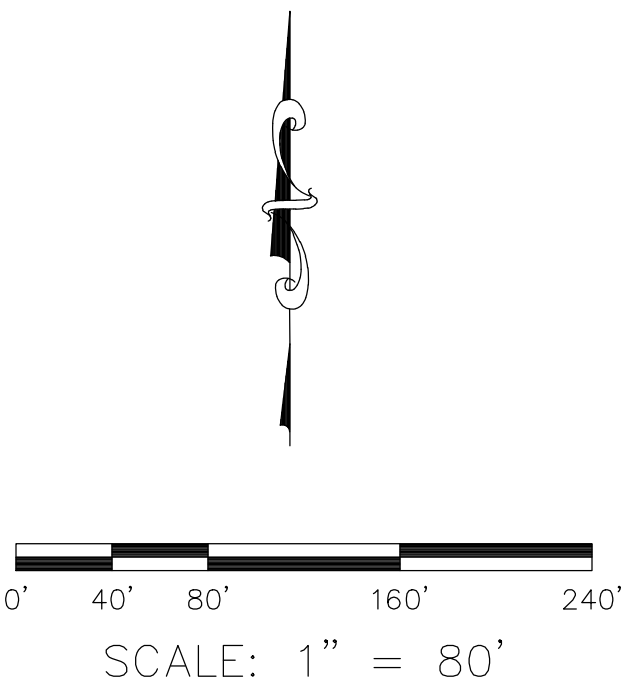
OC Public Works
OC Survey/Field Services
Boundary Analysis & Mapping

			COUNTY OF ORANGE OC PUBLIC WORKS/ENGINEERING SERVICES OC SURVEY/FIELD SERVICES/BOUNDARY ANALYSIS & MAPPING			
			SANTA ANA RIVER (E01) OUTLET 1918 ORDINARY HIGH WATER MARK			
			TITLE SHEET			
			PROJECT LIMITS: SANTA ANA RIVER BETWEEN BROOKHURST ST. AND HIGHLAND ST.			
			DATE OF SURVEY:10/29/2020	BY:T. LOFGREEN & PARTY		SHEET NO. 1 of 4
			MAPPING	BY:A. VU		
			OFFICE CHECK	BY:E. MEDINA, PLS		
			FIELD CHECK	BY:T. LOFGREEN & PARTY		
			SCALE: N.T.S.	W.O. #EF21246	FILE #2021PW-PM0009	
		REVISIONS	FILE:SAR_OUTLET_02HWM_BOUNDARY_2020.DWG			



CURVE TABLE						
CURVE #	DELTA	RADIUS	LENGTH	RECORD DELTA	RECORD RADIUS	RECORD LENGTH
C1	3°01'57"	5000.00'	264.64'	(3°01'54" R1)	(5000.00' R1)	(264.58' R1)
C2	3°01'54"	5000.00'	264.55'	(3°01'54" R1)	(5000.00' R1)	(264.58' R1)

LINE TABLE			
LINE #	BEARING	MEASURED DISTANCE	RECORD DISTANCE
L1	N50°03'32"W	98.76'	(98.76' R1)
L27	N37°00'29"E	53.38'	(53.27' R3)
L28	N39°54'44"E	48.52'	(48.49' R3)
L29	N39°54'44"E	48.18'	(48.16' R3)
L30	N39°56'15"E	48.36'	(48.30' R3)
L31	N39°56'15"E	48.41'	(48.54' R3)
L40	N23°21'20"W	113.93'	(113.94' R5)
L41	N65°23'33"E	117.72'	(117.73' R5)
L42	N11°55'14"W	81.15'	(81.16' R5)
L43	N88°29'24"E	85.67'	(85.68' R5)



ESTABLISHMENT NOTES

- (A) FOUND MONUMENT BUT DUE TO TRAFFIC CONDITIONS, THE CENTERLINE INTERSECTION OF BROOKHURST ST. AND P.C.H. WAS ESTABLISHED BY TIES PER (R5).
- (B) ESTABLISHED THE CENTERLINE OF BROOKHURST ST. HOLDING ESTABLISHMENT NOTE (A) AND MONUMENT 11 PER (R1).
- (C) ESTABLISHED THE CENTERLINE BC OF P.C.H. HOLDING RECORD DATA BETWEEN ESTABLISHMENT NOTES (A) AND (D) PER (R1).
- (D) ESTABLISHED THE CENTERLINE EC OF P.C.H. BY TIES HOLDING MONUMENTS 7 AND 8 PER (R3).
- (E) ESTABLISHED THE CENTERLINE BC OF P.C.H. HOLDING RECORD DATA BETWEEN ESTABLISHMENT NOTES (D) AND (F) PER (R1).
- (F) ESTABLISHED THE CENTERLINE EC OF P.C.H. BY TIES HOLDING MONUMENTS 11 AND 12 PER (R3).
- (G) ESTABLISHED THE CENTERLINE BC OF P.C.H. BY TIES HOLDING MONUMENTS 13 AND 14 PER (R3).
- (H) ESTABLISHED THE CENTERLINE EC OF P.C.H. BY TIES HOLDING MONUMENTS 15 AND 16 PER (R3).
- (I) ESTABLISHED THE CENTERLINE BC OF P.C.H. BY TIES HOLDING MONUMENTS 17 AND 18 PER (R3).
- (J) ESTABLISHED THE CENTERLINE OF P.C.H. BETWEEN ESTABLISHMENT NOTES (C), (D), (E), (F), (G), (H), (I) HOLDING RECORD DATA PER (R1) & (R3).
- (K) ESTABLISHED THE OLD CENTERLINE OF P.C.H. HOLDING RECORD DATA PER (R1) BETWEEN ESTABLISHMENT NOTES (A) AND (D).
- (L) ESTABLISHED THE CENTERLINE OF SEASHORE DR. HOLDING MONUMENTS 19 AND 22 PER (R7).
- (M) ESTABLISHED THE NW'LY LINE OF BLOCK "N" OF (R9) HOLDING MONUMENT 23 AND A LINE PERPENDICULAR TO ESTABLISHMENT NOTE (I) NE'LY FROM MONUMENT 23 PER (R2).
- (N) ESTABLISHED THE INTERSECTION OF THE OLD CENTERLINE OF P.C.H. AND THE NW'LY RIGHT OF WAY OF SANTA ANA RIVER (E01) HOLDING RECORD DATA PER (R11) NE'LY FROM THE E.C. OF ESTABLISHMENT (D) ALONG ESTABLISHMENT NOTE (D).
- (O) ESTABLISHED A PORTION OF THE SANTA ANA RIVER (E01) RIGHT OF WAY HOLDING A LINE BETWEEN MON NOTE 24 & ESTABLISHMENT NOTE (D).

- (P) ESTABLISHED A PORTION OF THE NW'LY RIGHT OF THE WAY OF SANTA ANA RIVER (E01) HOLDING A LINE BETWEEN MONUMENTS 24 AND 25 PER (R2).
- (Q) ESTABLISHED A PORTION OF THE NW'LY RIGHT OF WAY OF THE SANTA ANA RIVER (E01) PER (R2) HOLDING RECORD DATA BETWEEN MONUMENTS 25 AND 26 PER (R2).
- (R) ESTABLISHED ANGLE POINT IN THE SANTA ANA RIVER (E01) RIGHT OF WAY PER (R2) HOLDING A RECORD DISTANCE OF 300.00' PER (R2) SW'LY FROM MON 26 ALONG LINE ESTABLISHMENT (S).
- (S) ESTABLISHED A PORTION OF THE NW'LY RIGHT OF WAY OF THE SANTA ANA RIVER (E01) PER (R2) HOLDING A LINE SW'LY FROM MONUMENT 26 ALONG THE SW'LY PROLONGATION OF LINE ESTABLISHMENT NOTE (D).
- (T) ESTABLISHED A PORTION OF THE SE'LY RIGHT OF WAY OF THE SANTA ANA RIVER (E01) HOLDING A LINE PARALLEL AND 30.00' NW'LY OF ESTABLISHMENT NOTE (D) PER (R11). FITS MONUMENT 27.
- (U) ESTABLISHED ANGLE POINT IN THE SE'LY RIGHT OF WAY OF THE SANTA ANA RIVER (E01) BY HOLDING A RECORD DISTANCE OF 191.49' PER (R2) SW'LY FROM MON 27 ALONG LINE ESTABLISHMENT NOTE (D) AND 30.00' NW'LY OF LINE ESTABLISHMENT (D).
- (V) ESTABLISHED THE S'LY ANGLE POINT IN THE SANTA ANA RIVER RIGHT (E01) OF WAY HOLDING RECORD DATA PER (R2) S'LY FROM ESTABLISHMENT NOTE (D).
- (W) ESTABLISHED THE SE'LY RIGHT OF WAY OF SANTA ANA RIVER (E01) HOLDING RECORD DATA PER (R2) BETWEEN ESTABLISHMENT NOTES (D) AND (V).
- (X) ESTABLISHED THE 1918 ORDINARY HIGH WATER MARK PER (R10) BY HOLDING A LINE BETWEEN ESTABLISHMENT NOTES (A) AND (O) PER (R2).
- (Y) ESTABLISHED A PORTION OF THE SE'LY RIGHT OF WAY OF THE SANTA ANA RIVER (E01) HOLDING RECORD DATA BETWEEN MONUMENTS 27 AND 28 PER (R2).
- (Z) ESTABLISHED POINT ON OLD CENTERLINE OF P.C.H. HOLDING RECORD DISTANCE OF 582.68' SE'LY FROM THE E.C. OF ESTABLISHMENT NOTE (K) ALONG THE LINE OF ESTABLISHMENT NOTE (A).
- (AA) ESTABLISHED THE E'LY RIGHT OF WAY OF SANTA ANA RIVER HOLDING RECORD DATA BETWEEN MONUMENT 28 AND ESTABLISHMENT NOTE (Z) PER (R2).
- (AB) ESTABLISHED A POINT ON THE 1918 ORDINARY HIGH WATER MARK PER (R10) HOLDING RECORD DATA PER (R2) NE'LY FROM ESTABLISHMENT NOTE (Y).
- (AC) ESTABLISHED A POINT ON THE 1918 ORDINARY HIGH WATER MARK PER (R10) HOLDING RECORD DATA PER (R2) NW'LY FROM ESTABLISHMENT NOTE (D).
- (AD) ESTABLISHED N'LY CORNER OF (R9) BY INTERSECTION OF A LINE 20' SW'LY OF AND PARALLEL WITH LINE ESTABLISHMENT NOTE (D) AND 30' SE'LY OF AND PARALLEL WITH A LINE ESTABLISHMENT NOTE (D).
- (AE) ESTABLISHED THE SW'LY RIGHT OF WAY OF SANTA ANA RIVER (E01) HOLDING A LINE BETWEEN ESTABLISHMENT NOTES (S) AND (Y).

MONUMENT NOTES

- 1 FOUND MAG NAIL & 1 1/2" WASHER STAMPED "LS 5411" PER (R4), FLUSH IN AC, ACCEPTED AS THE CENTERLINE INTERSECTION OF BROOKHURST ST. & BUSHARD ST.
- 2 FOUND LEAD TACK & 3/4" TAG STAMPED "CALTRANS TIE" PER (R5), FLUSH IN CURB, ACCEPTED AS TIE FOR CENTERLINE INTERSECTION OF P.C.H. & BROOKHURST ST.
- 3 FOUND LEAD TACK & 3/4" TAG STAMPED "OCS TIE" PER (R5), FLUSH IN CURB, ACCEPTED AS TIE FOR CENTERLINE INTERSECTION OF P.C.H. & BROOKHURST ST.
- 4 FOUND LEAD TACK & 3/4" TAG STAMPED "OCS TIE" PER (R5), FLUSH IN CURB, ACCEPTED AS TIE FOR CENTERLINE INTERSECTION OF P.C.H. & BROOKHURST ST.
- 5 FOUND LEAD TACK & 3/4" TAG STAMPED "CALTRANS TIE" PER (R5), FLUSH IN CURB, ACCEPTED AS TIE FOR CENTERLINE INTERSECTION OF P.C.H. & BROOKHURST ST.
- 6 FOUND MAG NAIL & 1 1/2" WASHER STAMPED "CAL TRANS" IN LIEU OF SPIKE & WASHER PER (R3), FLUSH IN AC, ACCEPTED AS TIE FOR CENTERLINE OF P.C.H.
- 7 FOUND MAG NAIL IN LIEU OF SPIKE AND WASHER STAMPED "CALTRANS" PER (R3), FLUSH IN AC, ACCEPTED AS TIE FOR CENTERLINE OF P.C.H.
- 8 FOUND MAG NAIL & ILLEGIBLE 1 1/2" WASHER IN LIEU OF SPIKE AND WASHER STAMPED "CALTRANS" PER (R3), FLUSH IN AC, ACCEPTED AS TIE FOR CENTERLINE OF P.C.H.
- 9 FOUND MAG NAIL & 1 1/2" WASHER IN LIEU OF SPIKE AND WASHER STAMPED "CALTRANS" PER (R3), FLUSH IN AC, ACCEPTED AS TIE FOR CENTERLINE OF P.C.H.
- 10 FOUND MAG NAIL & 1 1/2" WASHER STAMPED "CALTRANS" IN LIEU OF SPIKE AND WASHER PER (R3), FLUSH IN AC, ACCEPTED AS TIE FOR CENTERLINE OF P.C.H.

REFERENCES

- (R1) = RECORD OF SURVEY 94-1003, R.S.B. 147/6-13
- (R2) = RECORD OF SURVEY 2002-1092, R.S.B. 193/10-12
- (R3) = CALTRANS FIELD BOOK, S.R. 92-028
- (R4) = CORNER RECORD, C.R. 2005-0847
- (R5) = CORNER RECORD, C.R. 2019-0013
- (R6) = CORNER RECORD, C.R. 0494
- (R7) = RECORD OF SURVEY 91-1018, R.S.B. 132/14-18
- (R8) = TRACT NO. 4400, M.M. 162/20-26
- (R9) = SEASHORE COLONY TRACT, M.M. 7/25
- (R10) = RECORD OF SURVEY, RSB 35/9-13
- (R11) = RECORD OF SURVEY 90-1152, RSB 156/1-6
- (R12) = DEED OR 4978/524
- (R13) = DEED OR 5987/199

LEGEND

- FOUND MONUMENT AS NOTED
- ⊗ S.F.N. - SEARCHED, FOUND NOTHING
- ⊠ POSITION ESTABLISHED BY TIES (MONUMENT INACCESSIBLE)

SEE SHEET 3

			COUNTY OF ORANGE OC PUBLIC WORKS/ENGINEERING SERVICES OC SURVEY/FIELD SERVICES/BOUNDARY ANALYSIS & MAPPING				
			SANTA ANA RIVER (E01) OUTLET 1918 ORDINARY HIGH WATER MARK				
			BOUNDARY MAP				
			PROJECT LIMITS: SANTA ANA RIVER BETWEEN BROOKHURST ST. AND HIGHLAND ST.				
			DATE OF SURVEY:10/29/2020		BY:T. LOFGREEN & PARTY		SHEET NO. 2 of 4
			MAPPING		BY:A. VU		
OFFICE CHECK		BY:E. MEDINA, PLS					
FIELD CHECK		BY:T. LOFGREEN & PARTY					
SCALE:1" = 80'		W.O. #EF21246					
MARK	DATE	ITEM	FILE #2021PW-PM0009 FILE:SAR_OUTLET_OHWM_BOUNDARY_2020.DWG				
REVISIONS							

CURVE TABLE						
CURVE #	DELTA	RADIUS	LENGTH	RECORD DELTA	RECORD RADIUS	RECORD LENGTH
C1	3°01'57"	5000.00'	264.64'	(3°01'54" R1)	(5000.00' R1)	(264.58' R1)
C2	3°01'54"	5000.00'	264.55'	(3°01'54" R1)	(5000.00' R1)	(264.58' R1)
C3	3°44'16"	4000.00'	260.94'	(3°44'15" R1)	(4000.00' R1)	(260.93' R1)
C4	5°31'07"	1013.28'	97.59'	—	(1013.30' R11)	—
C5	0°11'55"	1013.28'	3.51'	(0°11'55" R11)	(1013.30' R11)	(3.51' R11)
C6	5°43'02"	1013.28'	101.11'	—	(1013.30' R11)	—
C7	108°52'53"	40.99'	77.89'	(108°52'53" R2)	(41.00' R2)	(77.91' R2)

NOTES

THE RIGHT OF WAY FOR THE SANTA ANA RIVER (E01) SHOWN HEREON IS PER (R2) FURTHER TITLE INVESTIGATION AND AN ADDITIONAL BOUNDARY SURVEY MAY BE NECESSARY.

SEE SHEET 2 FOR ESTABLISHMENT NOTES.

MONUMENT NOTES

- 7

FOUND MAG NAIL IN LIEU OF SPIKE AND WASHER STAMPED "CALTRANS" PER (R3), FLUSH IN AC, ACCEPTED AS TIE FOR CENTERLINE OF P.C.H.
- 8

FOUND MAG NAIL & ILLEGIBLE 1 1/2" WASHER IN LIEU OF SPIKE AND WASHER STAMPED "CALTRANS" PER (R3), FLUSH IN AC, ACCEPTED AS TIE FOR CENTERLINE OF P.C.H.
- 9

FOUND MAG NAIL & 1 1/2" WASHER IN LIEU OF SPIKE AND WASHER STAMPED "CALTRANS" PER (R3), FLUSH IN AC, ACCEPTED AS TIE FOR CENTERLINE OF P.C.H.
- 10

FOUND MAG NAIL & 1 1/2" WASHER STAMPED "CALTRANS" IN LIEU OF SPIKE AND WASHER PER (R3), FLUSH IN AC, ACCEPTED AS TIE FOR CENTERLINE OF P.C.H.
- 11

FOUND MAG NAIL IN LIEU OF SPIKE AND WASHER STAMPED "CALTRANS" PER (R3), FLUSH IN AC, ACCEPTED AS TIE FOR CENTERLINE OF P.C.H.
- 12

FOUND MAG NAIL IN LIEU OF SPIKE AND WASHER STAMPED "CALTRANS" PER (R3), FLUSH IN AC, ACCEPTED AS TIE FOR CENTERLINE OF P.C.H.
- 13

FOUND LEAD TACK & 3/4" TAG STAMPED "CALTRANS" PER (R3), FLUSH IN CURB, ACCEPTED AS TIE FOR CENTERLINE OF P.C.H.
- 14

FOUND LEAD TACK & 3/4" TAG STAMPED "CALTRANS" PER (R3), FLUSH IN CURB, ACCEPTED AS TIE FOR CENTERLINE OF P.C.H.
- 15

FOUND LEAD TACK & 3/4" TAG STAMPED "CALTRANS" PER (R3), FLUSH IN CURB, ACCEPTED AS TIE FOR CENTERLINE OF P.C.H.
- 16

FOUND LEAD TACK & 3/4" TAG STAMPED "CALTRANS" PER (R3), FLUSH IN CURB, ACCEPTED AS TIE FOR CENTERLINE OF P.C.H.
- 17

FOUND LEAD TACK & 3/4" TAG STAMPED "CALTRANS" PER (R3), FLUSH IN CURB, ACCEPTED AS TIE FOR CENTERLINE OF P.C.H.
- 18

FOUND LEAD TACK & 3/4" TAG STAMPED "CALTRANS" PER (R3), FLUSH IN CURB, ACCEPTED AS TIE FOR CENTERLINE OF P.C.H.
- 19

FOUND SPIKE & 1 1/2" WASHER STAMPED "LS 4653" IN LIEU OF O.C.S. SPIKE & WASHER PER (R6), FLUSH IN AC, ACCEPTED AS THE CENTERLINE INTERSECTION OF SEASHORE DR. & HIGHLAND ST.
- 20

FOUND 2" BRASS DISK PER (R6), DN 0.8" IN WELL MONUMENT, ACCEPTED AS THE CENTERLINE INTERSECTION OF SEASHORE DR. & NORDINA ST.
- 21

FOUND SQUARE HEAD SPIKE PER (R7), DN 0.1' IN AC, ACCEPTED AS THE CENTERLINE INTERSECTION OF SEASHORE DR. & SONORA ST.
- 22

FOUND 2" BRASS DISK PER (R7), DN 1.0" IN WELL MONUMENT, ACCEPTED AS THE CENTERLINE INTERSECTION OF SEASHORE DR. & OLIVE ST.
- 23

FOUND 1" I.P. W/ TACK & TAG STAMPED "LS 2312" PER (R8), DN 1.2' IN SAND, ACCEPTED AS SWLY CORNER OF LOT 4 OF (R9).
- 24

FOUND 2" I.P. W/ TAG STAMPED "ORANGE COUNTY SURVEYOR" PER (R2), DN 0.6' IN SAND, ACCEPTED AS ANGLE POINT ON THE NWLY LINE OF SANTA ANA RIVER (E01).
- 25

FOUND 2" I.P. W/ TAG STAMPED "ORANGE COUNTY SURVEYOR" PER (R2), DN 0.6' IN SAND, ACCEPTED AS ANGLE POINT ON THE NWLY LINE OF SANTA ANA RIVER (E01).
- 26

FOUND 1 1/2" I.P. W/ TAG STAMPED "ORANGE COUNTY SURVEYOR" PER (R2), DN 0.5' IN SAND, ACCEPTED AS POINT ON THE NWLY LINE OF SANTA ANA RIVER (E01).
- 27

FOUND LEAD & 1 1/2" TAG STAMPED "ORANGE COUNTY SURVEYOR" PER (R2), FLUSH IN SIDEWALK, ACCEPTED AS ANGLE POINT ON THE NELY LINE OF SANTA ANA RIVER (E01).
- 28

FOUND LEAD & 1 1/2" TAG STAMPED "ORANGE COUNTY SURVEYOR" PER (R2), FLUSH IN CONC, ACCEPTED AS ANGLE POINT ON THE NELY LINE OF SANTA ANA RIVER (E01).
- 29

FOUND LEAD TACK & 3/4" TAG STAMPED "CALTRANS", NO REFERENCE, FLUSH IN SIDEWALK, S10°38'58"E 2.36' FROM MONUMENT 13.
- 30

FOUND LEAD TACK & 3/4" TAG STAMPED "CALTRANS", NO REFERENCE, FLUSH IN SIDEWALK, N42°06'56"W 9.43' FROM MONUMENT 14.

REFERENCES

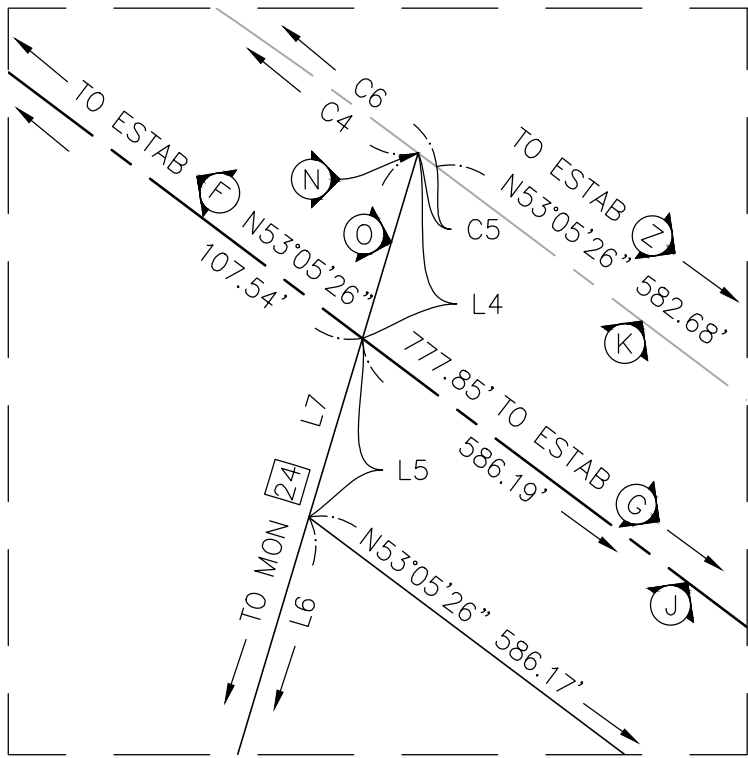
- (R1) = RECORD OF SURVEY 94-1003, R.S.B. 147/6-13
- (R2) = RECORD OF SURVEY 2002-1092, R.S.B. 193/10-12
- (R3) = CALTRANS FIELD BOOK, S.R. 92-028
- (R4) = CORNER RECORD, C.R. 2005-0847
- (R5) = CORNER RECORD, C.R. 2019-0013
- (R6) = CORNER RECORD, C.R. 0494
- (R7) = RECORD OF SURVEY 91-1018, R.S.B. 132/14-18
- (R8) = TRACT NO. 4400, M.M. 162/20-26
- (R9) = SEASHORE COLONY TRACT, M.M. 7/25
- (R10) = RECORD OF SURVEY, RSB 35/9-13
- (R11) = RECORD OF SURVEY 90-1152, RSB 156/1-6
- (R12) = DEED OR 4978/524
- (R13) = DEED OR 5987/199

LEGEND

- FOUND MONUMENT AS NOTED
- ⊗

SEARCHED FOUND NOTHING

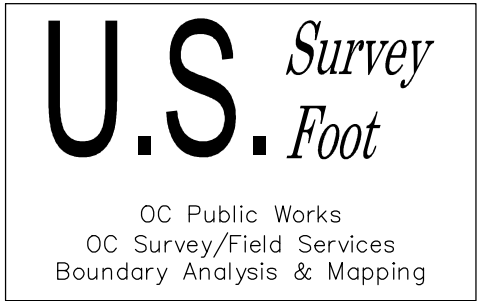
SEE SHEET 2



RECORD OF SURVEY 2002-1092,
R.S.B. 193/10-12

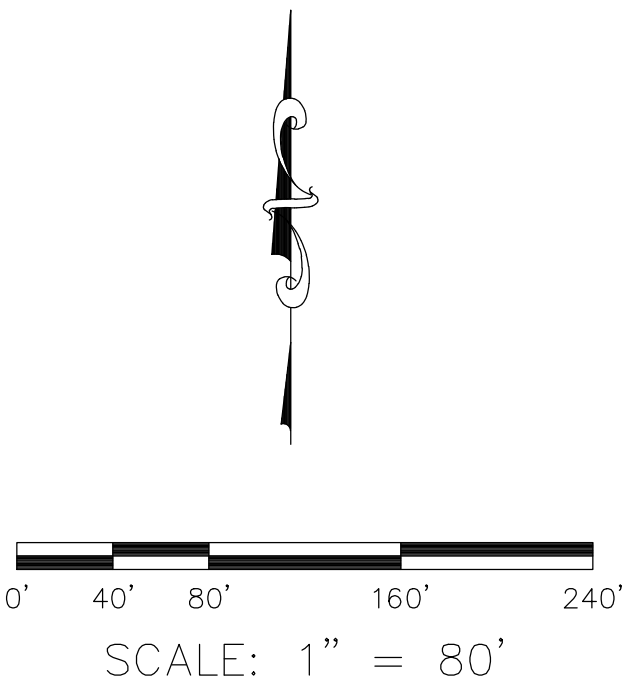
SANTA ANA RIVER (E01)

RECORD OF SURVEY 90-1152,
R.S.B. 156/1-6
OR 4978/524
OR 5987/199
RECORD OF SURVEY
R.S.B. 35/9-13
RECORD OF SURVEY 2002-1092,
R.S.B. 193/10-12

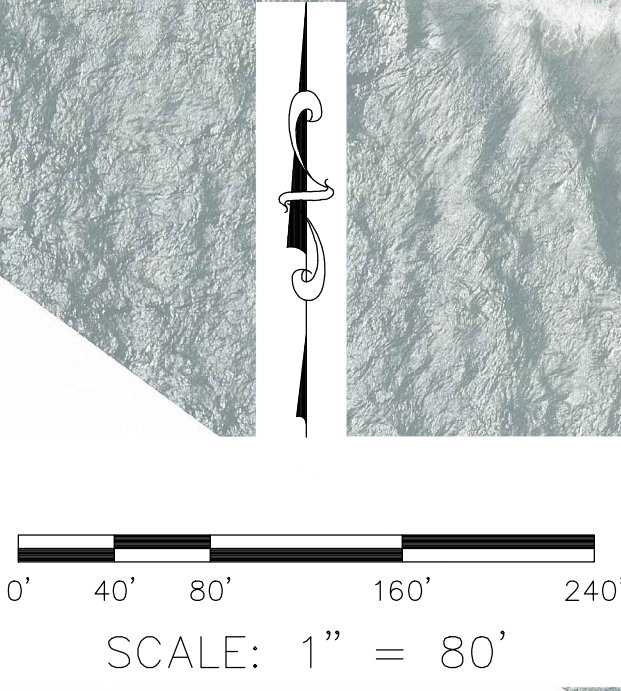
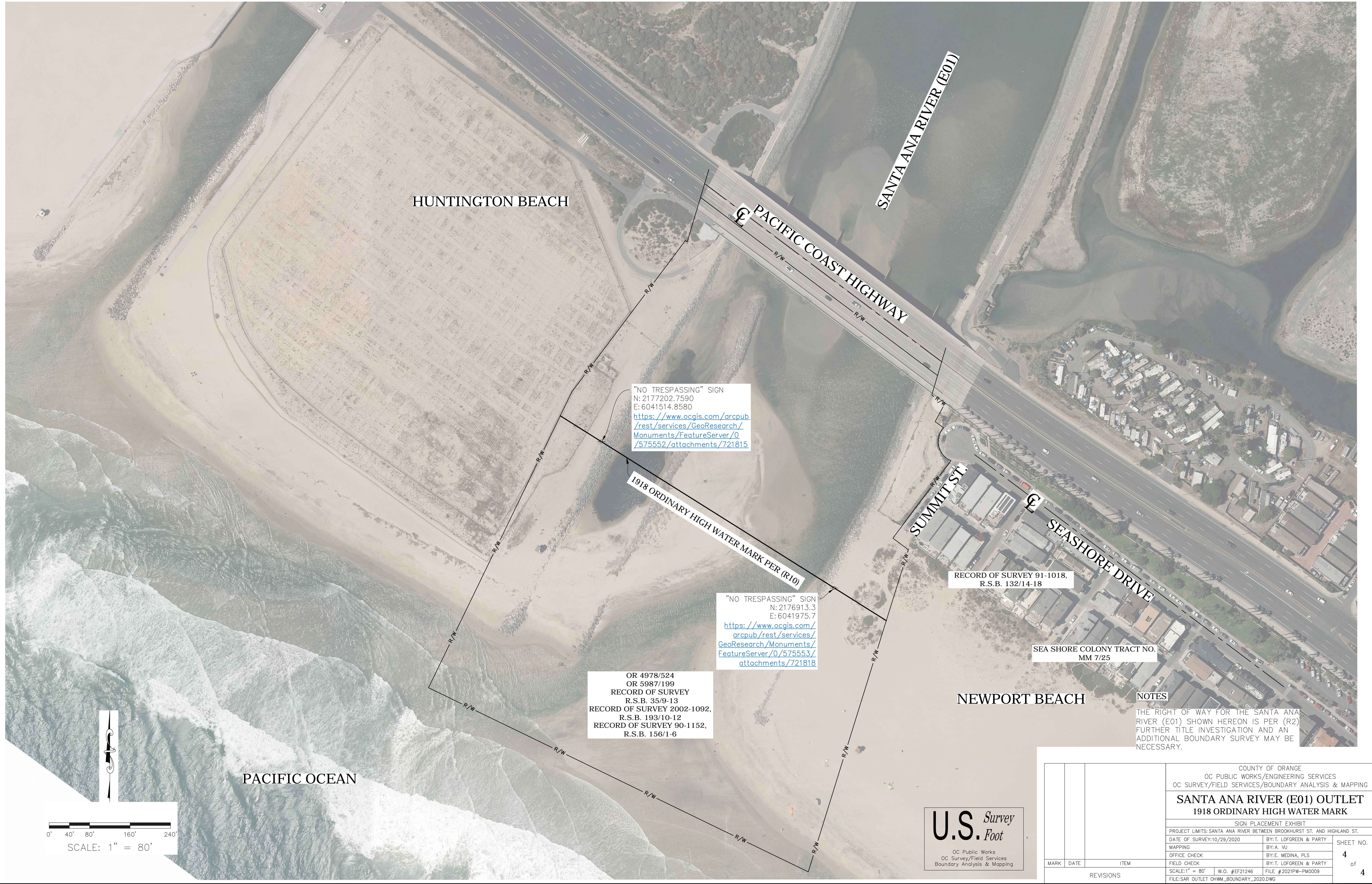


LINE TABLE			
LINE #	BEARING	MEASURED DISTANCE	RECORD DISTANCE
L1	N50°03'32"W	98.76'	(98.76 R1)
L2	N36°53'20"E	22.46'	—
L3	N36°54'34"E	27.50'	—
L4	N16°41'45"E	29.30'	—
L5	N16°41'45"E	28.27'	—
L6	N16°41'45"E	91.53'	(91.53 R11)
L7	N16°41'45"E	149.10'	(149.10' R11)
L8	N53°19'23"W	4.46'	(4.46 R2)
L9	N46°12'17"W	101.14'	(101.14 R2)
L10	N53°35'38"W	99.40'	(99.40 R2)
L11	N48°19'14"W	97.74'	(97.74 R2)
L12	N43°36'55"W	204.42'	(204.42 R2)
L13	N47°09'50"W	300.04'	(300.04 R2)
L14	N02°33'06"W	224.04'	(224.04 R2)
L15	N85°34'03"E	112.24'	(112.24 R2)
L16	N33°32'13"E	199.14'	(199.14 R2)
L17	N53°06'17"W	38.26'	(38.26 R2)
L18	N36°53'25"E	191.49'	(191.49 R2)
L19	N53°06'26"W	20.30'	(20.30' R2)
L20	N28°10'13"E	38.48'	(38.48' R2)
L21	N53°04'26"W	31.27'	(31.27' R2)
L22	N16°41'45"E	40.03'	(40.03 R11)
L23	N16°41'45"E	28.21'	—
L24	N16°41'45"E	29.30'	—
L25	N16°41'45"E	97.54'	(97.55' R2)
L26	N36°53'25"E	199.07'	(199.06' R2)

LINE TABLE			
LINE #	BEARING	MEASURED DISTANCE	RECORD DISTANCE
L27	N37°00'29"E	53.38'	(53.27' R3)
L28	N39°54'44"E	48.52'	(48.49' R3)
L29	N39°54'44"E	48.18'	(48.16' R3)
L30	N39°56'15"E	48.36'	(48.30' R3)
L31	N39°56'15"E	48.41'	(48.54' R3)
L32	N36°53'15"E	48.07'	(48.02' R3)
L33	N36°53'15"E	48.58'	(48.51' R3)
L34	N36°53'15"E	49.19'	(49.21' R3)
L35	N36°53'15"E	48.70'	(48.67' R3)
L36	N33°10'23"E	52.00'	(52.00 R3)
L37	N33°10'23"E	52.60'	(52.57' R3)
L38	N33°10'38"E	52.00'	(51.97' R3)
L39	N33°10'38"E	52.58'	(52.55' R3)



			COUNTY OF ORANGE OC PUBLIC WORKS/ENGINEERING SERVICES OC SURVEY/FIELD SERVICES/BOUNDARY ANALYSIS & MAPPING				
			SANTA ANA RIVER (E01) OUTLET 1918 ORDINARY HIGH WATER MARK				
			BOUNDARY MAP				
			PROJECT LIMITS: SANTA ANA RIVER BETWEEN BROOKHURST ST. AND HIGHLAND ST.				
MARK	DATE	ITEM	DATE OF SURVEY: 10/29/2020		BY: T. LOFGREEN & PARTY		SHEET NO. 3 of 4
			MAPPING		BY: A. VU		
			OFFICE CHECK		BY: E. MEDINA, PLS		
			FIELD CHECK		BY: T. LOFGREEN & PARTY		
			REVISIONS		SCALE: 1" = 80' W.O. #EF21246 FILE #2021PW-PM0009		
			FILE: SAR_OUTLET_OHWM_BOUNDARY_2020.DWG				



U.S. Survey Foot
OC Public Works
OC Survey/Field Services
Boundary Analysis & Mapping

NOTES
THE RIGHT OF WAY FOR THE SANTA ANA RIVER (E01) SHOWN HEREON IS PER (R2) FURTHER TITLE INVESTIGATION AND AN ADDITIONAL BOUNDARY SURVEY MAY BE NECESSARY.

			COUNTY OF ORANGE OC PUBLIC WORKS/ENGINEERING SERVICES OC SURVEY/FIELD SERVICES/BOUNDARY ANALYSIS & MAPPING		
			SANTA ANA RIVER (E01) OUTLET 1918 ORDINARY HIGH WATER MARK		
			SIGN PLACEMENT EXHIBIT		
			PROJECT LIMITS: SANTA ANA RIVER BETWEEN BROOKHURST ST. AND HIGHLAND ST.		
			DATE OF SURVEY: 10/29/2020	BY: T. LOFGREEN & PARTY	SHEET NO. 4 of 4
			MAPPING	BY: A. VU	
			OFFICE CHECK	BY: E. MEDINA, PLS	
			FIELD CHECK	BY: T. LOFGREEN & PARTY	
			SCALE: 1" = 80'	W.O. #EF21246	
			FILE: SAR_OUTLET_OHWM_BOUNDARY_2020.DWG	FILE #2021PW-PM0009	
MARK	DATE	ITEM	REVISIONS		