




- 1 Construct temporary widening on south side of Oso Parkway
- 2 Construct portion of sidewalk on south side of Oso Parkway
- 3 Remove inlet on Oso Parkway

A. Maintain existing traffic pattern



Legend

-  Construction this stage
-  Overnight / Weekend construction this stage
-  Direction of traffic



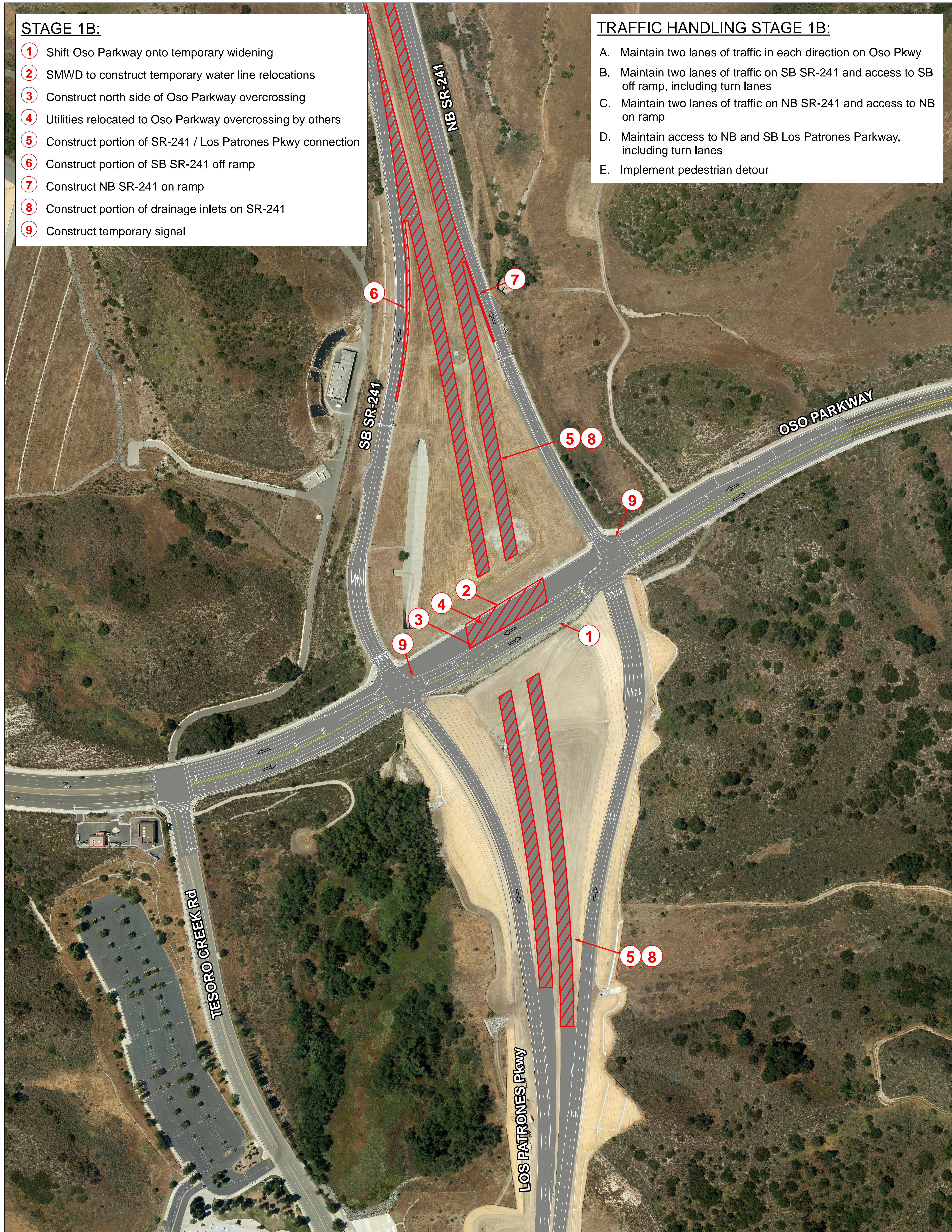
DESIGNED AND PRODUCED BY:
Aerial Services, GIS Applications Unit
1 Flood

SOURCE:
Aerial, 3 inch resolution, flown 5/5/17 - 24
Aerial Services, Land Information Systems D
University of Oregon and OC SURVEYLIBROS
descriptions of new studies regarding the accoun
from which this map was derived. Neither the
Aerial Services shall be liable under any circum
case, indirect, special, incidental or consequen
ties with respect to any claim by any user or
or, in whole or in part, from the use of this m

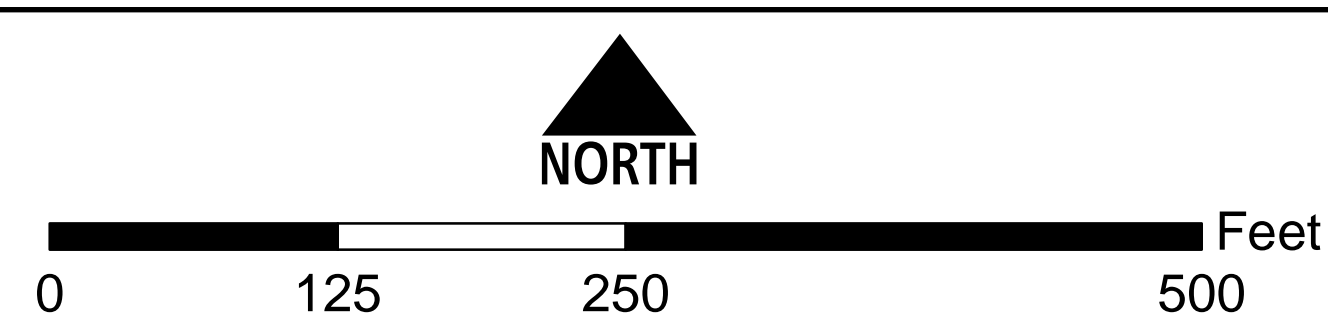
March 12, 2018

- 1 Shift Oso Parkway onto temporary widening
- 2 SMWD to construct temporary water line relocations
- 3 Construct north side of Oso Parkway overcrossing
- 4 Utilities relocated to Oso Parkway overcrossing by others
- 5 Construct portion of SR-241 / Los Patrones Pkwy connection
- 6 Construct portion of SB SR-241 off ramp
- 7 Construct NB SR-241 on ramp
- 8 Construct portion of drainage inlets on SR-241
- 9 Construct temporary signal

- A. Maintain two lanes of traffic in each direction on Oso Pkwy
- B. Maintain two lanes of traffic on SB SR-241 and access to SB off ramp, including turn lanes
- C. Maintain two lanes of traffic on NB SR-241 and access to NB on ramp
- D. Maintain access to NB and SB Los Patrones Parkway, including turn lanes
- E. Implement pedestrian detour



OSO PARKWAY: STAGE 1B



Legend

-  Construction this stage
-  Overnight / Weekend construction this stage
-  Direction of traffic



DESIGNED AND PRODUCED BY:
OC Survey
Geospatial Services, GIS Applications
James Ford

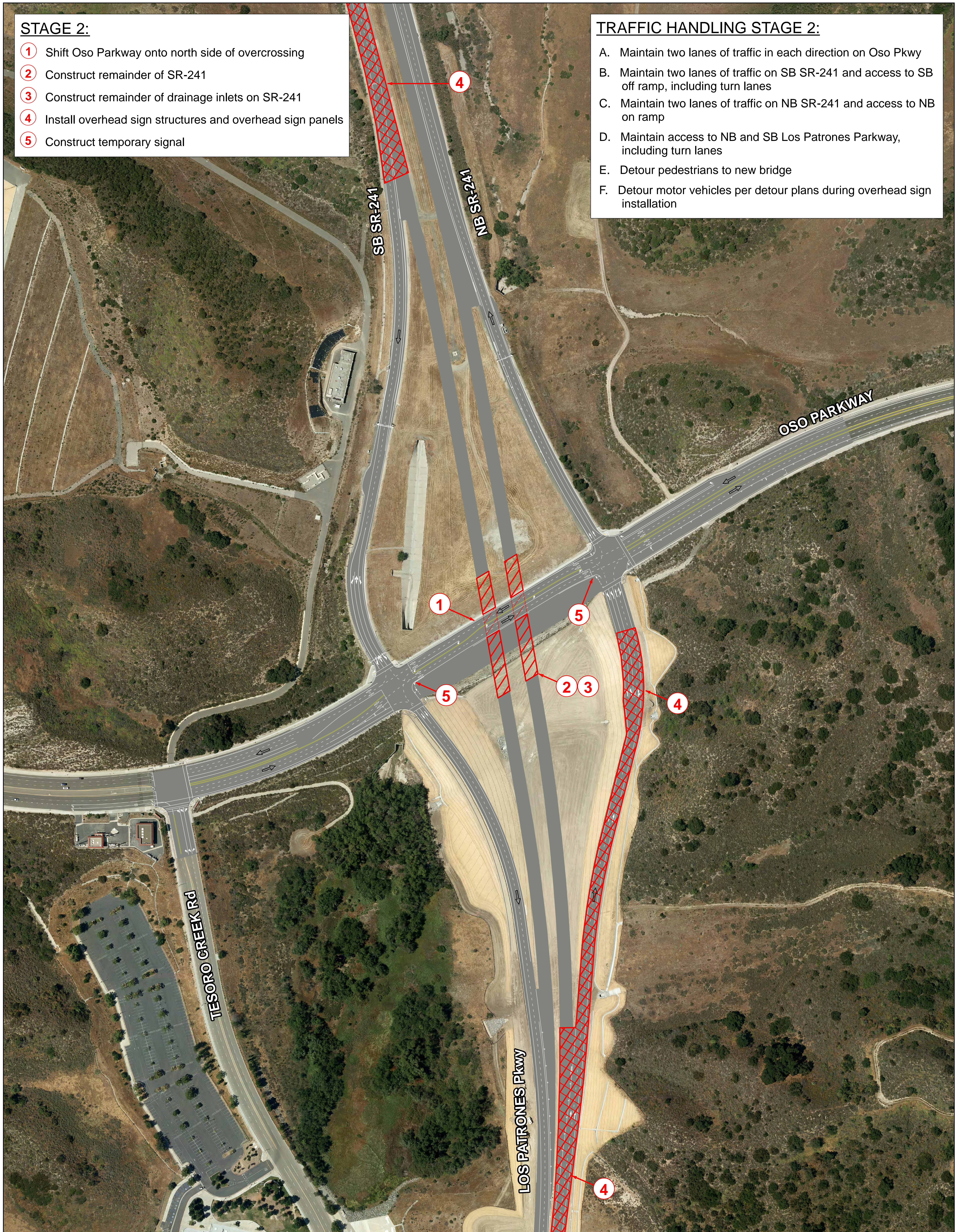
DATA SOURCE:
- Eagle Aerial, 3 inch resolution, 80
- Geospatial Services, Land Informa

The County of Orange and OC Survey
representations or warranties, regard
data from which this map was derive
Geomatics/USGS shall be liable at
any direct, indirect, special, conse
damages with respect to any claim
arise on account of or arising from

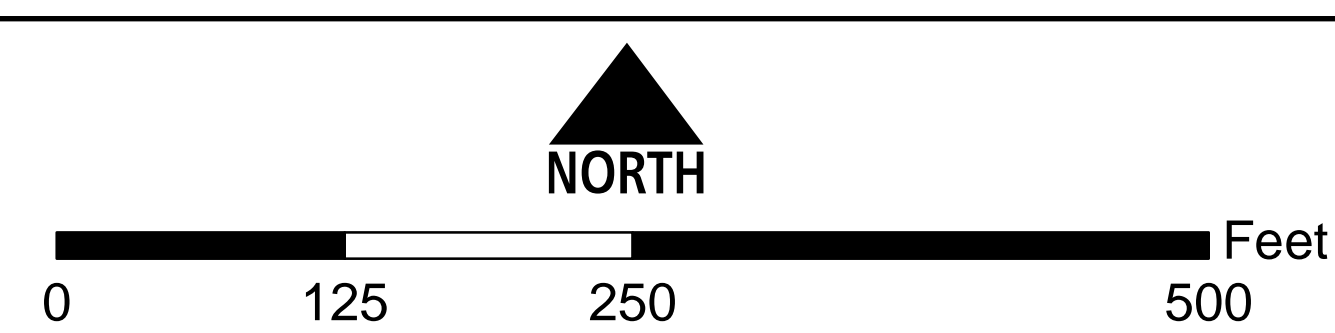
DATE: March 12, 2018

- ① Shift Oso Parkway onto north side of overcrossing
- ② Construct remainder of SR-241
- ③ Construct remainder of drainage inlets on SR-241
- ④ Install overhead sign structures and overhead sign panels
- ⑤ Construct temporary signal




- A. Maintain two lanes of traffic in each direction on Oso Pkwy
- B. Maintain two lanes of traffic on SB SR-241 and access to SB off ramp, including turn lanes
- C. Maintain two lanes of traffic on NB SR-241 and access to NB on ramp
- D. Maintain access to NB and SB Los Patrones Parkway, including turn lanes
- E. Detour pedestrians to new bridge
- F. Detour motor vehicles per detour plans during overhead sign installation



OSO PARKWAY: STAGE 2



Legend

-  Construction this stage
-  Overnight / Weekend construction this stage
-  Direction of traffic



DESIGNED AND PRODUCED BY:
Survey
Capitol Services, GIS Applications Unit
Tom Reed

DATA SOURCE:
Aerial, 3 inch resolution, flown 5/5/17 - 7/4/17
Geospatial Services, Land Information Systems Division
County of Orange and OC Survey/GIS/GIS metadata
Information, or warranties regarding the accuracy
of the data from which this map was derived. Neither the
County of Orange/GIS/GIS shall be liable under any circumstance
for direct, indirect, special, incidental or consequential
damages with respect to any claim by any user or any
party on account of or arising from the use of this map.

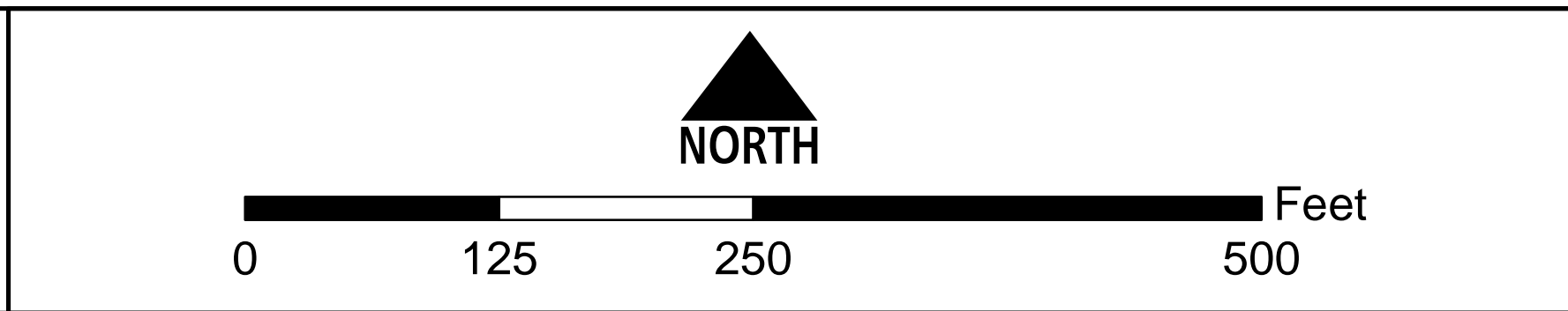
DATE: March 12, 2018



- STAGE 3:**
- 1 Construct reminder of Oso Parkway overcrossing
 - 2 Construct reminder of SB SR-241 off-ramp
 - 3 Remove and install drainage inlet on Oso Parkway

- TRAFFIC HANDLING STAGE 3:**
- A. Maintain two lanes of traffic in each direction on Oso Parkway
 - B. Open NB and SB SR-241 mainline
 - C. Maintain access to NB and SB ramps

OSO PARKWAY: STAGE 3



- Legend**
- Construction this stage
 - Overnight / Weekend construction this stage
 - Direction of traffic

