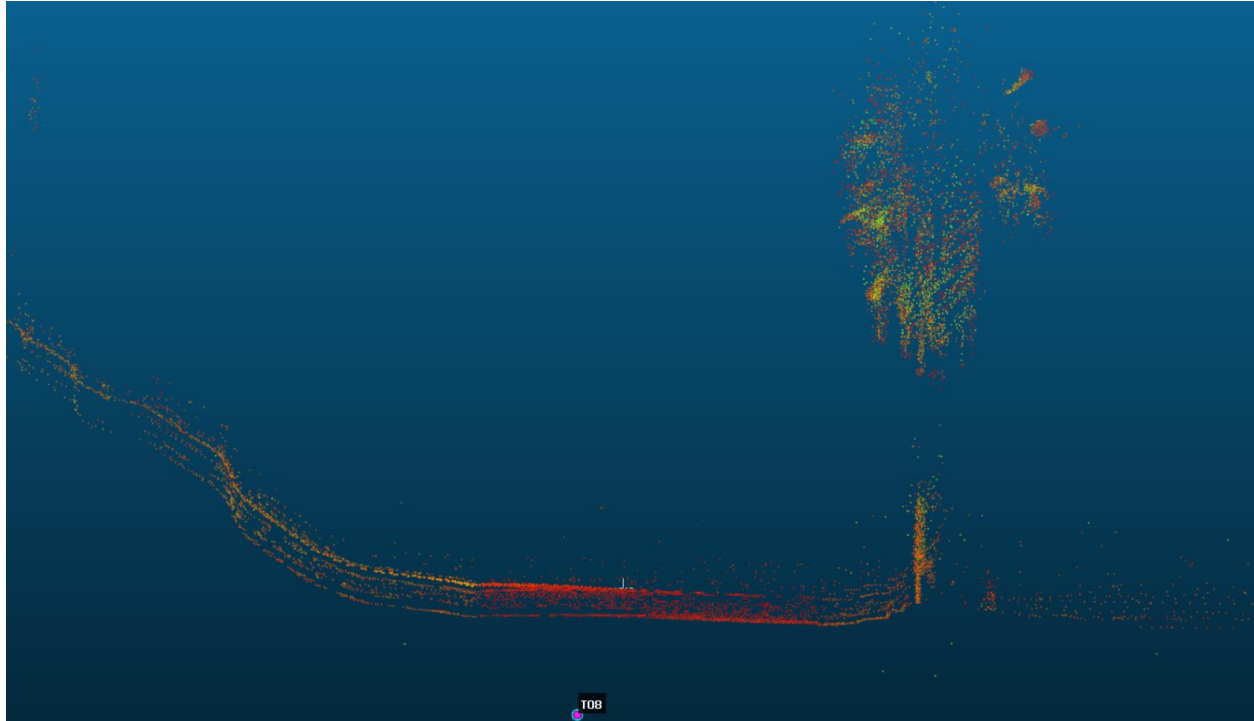


## Trabuco Oaks Road

Road had diverged into multiple surfaces. Over 1.5' of separation in some areas. In addition, the scan has a significant amount of drift. The data is unusable.



## Profile View

<input checked="" type="checkbox"/> show 'to align' entities					r = 20.000			RMS < 10%		
	X	Y	Z	Error						
A0	14.088468	-21.941268	-1.735180	9.25029						
A1	26.715468	-216.247266	7.789820	11.5448						
A2	24.315467	-474.065259	23.875820	5.75304						
A3	-12.257532	-680.867261	30.935820	3.75397						
A4	-35.686534	-809.974255	39.243820	6.52248						

<input checked="" type="checkbox"/> show 'reference' entities					X	Y	Z	Error		
...	...	...	...	...	...	...	...	...	...	...
R2	6153893.715...	2188085.929...	1066.833008	5.75304						
R3	6154045.432...	2188758.546...	1064.126953	3.75397						
R4	6154141.624...	2189178.817...	1077.649048	6.52248						
R5	6154468.268...	2189650.677...	1093.933960	2.39001						
R6	6154730.191...	2190441.474...	1128.119019	4.18477						

☒ adjust scale  
☐ auto update zoom

Rotation XYZ ☒ Tx ☒ Ty ☒ Tz

align reset ✓ ✗

Align info ✕

Final RMS: 6.88483

Transformation matrix

-3.273	-0.161	0.072	-807.074
0.162	-3.273	0.069	-3869.378
0.068	0.072	3.276	1016.246
0.000	0.000	0.000	1.000

Scale: 3.27796 (already integrated in above matrix!)

Refer to Console (F8) for more details

OK

