



# OC PUBLIC WORKS DEPARTMENT

JAMES TREADAWAY, DIRECTOR OF PUBLIC WORKS

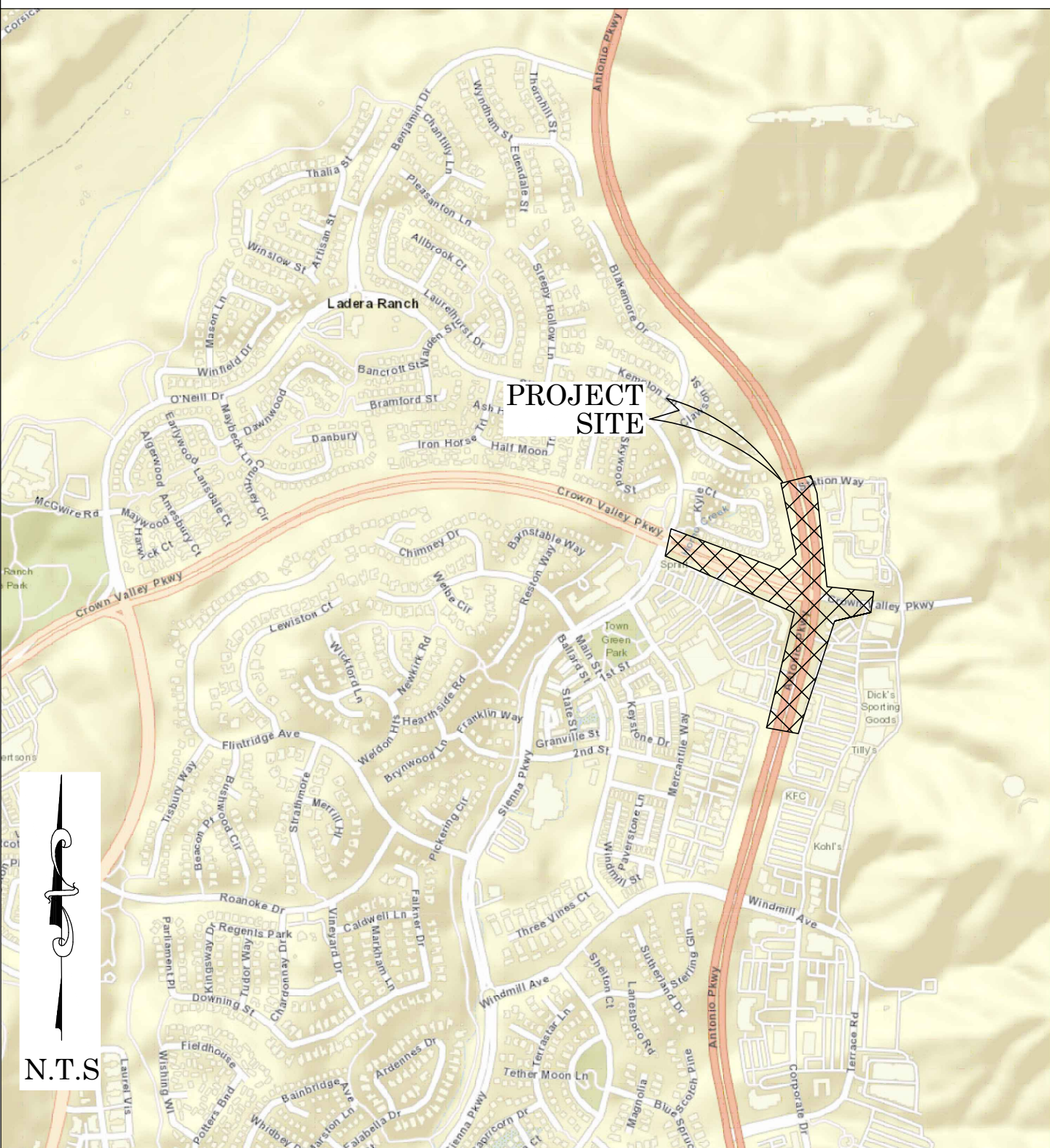
KEVIN HILLS, COUNTY SURVEYOR

## ANTONIO PARKWAY AND CROWN VALLEY PARKWAY

### ROADWAY IMPROVEMENT

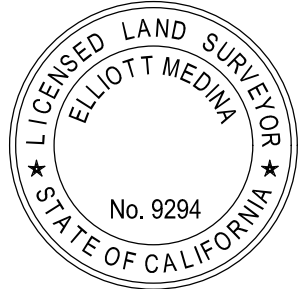


#### LOCATION MAP



#### SENIOR LAND SURVEYOR'S CERTIFICATE:

THIS MAP CORRECTLY REPRESENTS A SURVEY MADE BY ME OR UNDER MY DIRECTION IN CONFORMANCE WITH REQUIREMENTS OF THE PROFESSIONAL LAND SURVEYOR'S ACT; THIS 14 DAY OF JULY, 2022.



ELLIOTT MEDINA, PLS. SENIOR LAND SURVEYOR

#### SENIOR LAND SURVEYOR'S STATEMENT:

THIS MAP HAS BEEN EXAMINED IN ACCORDANCE WITH THE PROFESSIONAL LAND SURVEYOR'S ACT; THIS 14 DAY OF JULY, 2022.

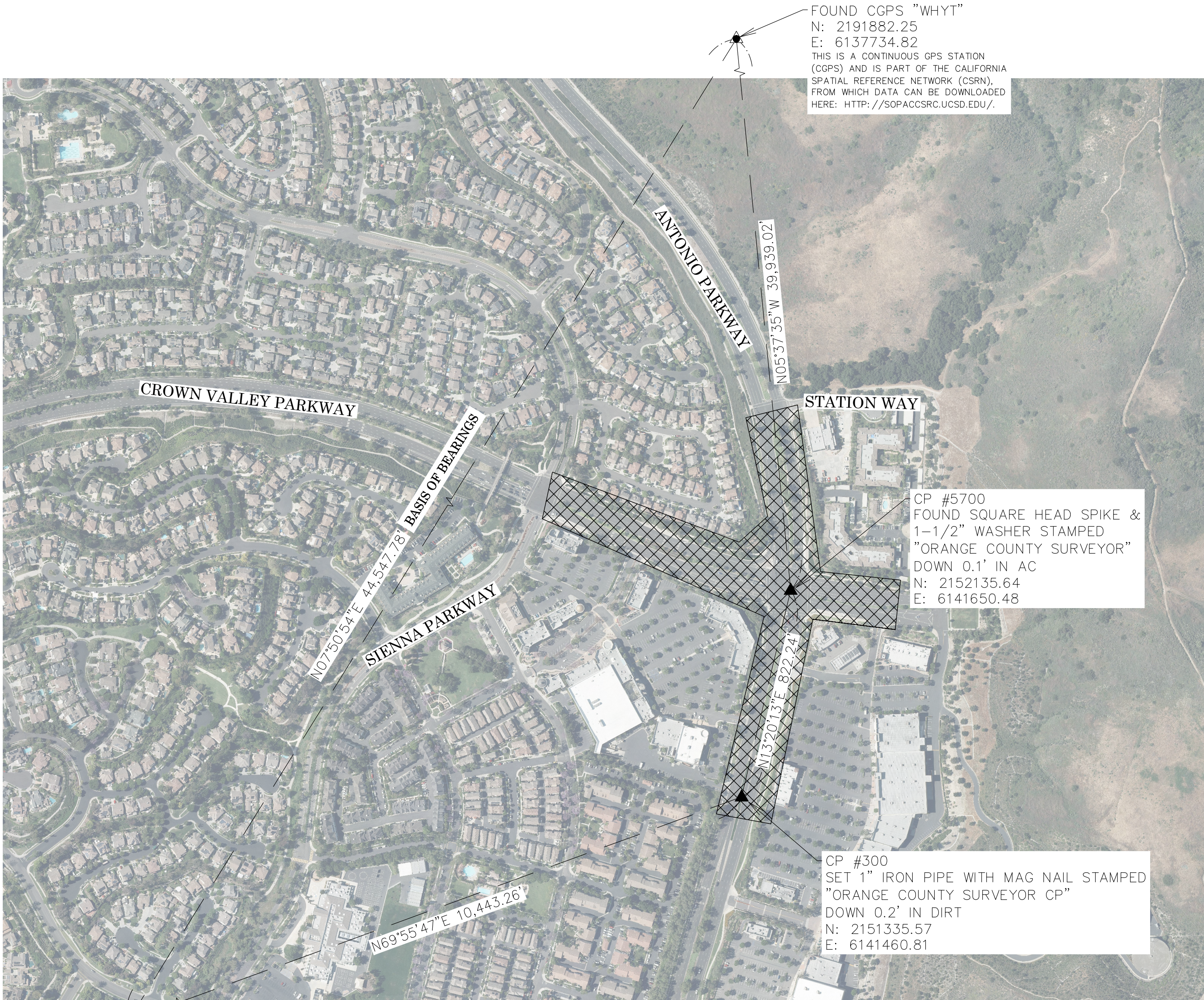


JESOM MORENO, PLS. SENIOR LAND SURVEYOR

**U.S. Survey**  
**Foot**

OC Public Works  
OC Survey/Field Services  
Boundary Analysis & Mapping

FOUND CGPS "SBCC"  
N: 2147751.75  
E: 6131651.74  
THIS IS A CONTINUOUS GPS STATION (CGPS) AND IS PART OF THE CALIFORNIA SPATIAL REFERENCE NETWORK (CSRN), FROM WHICH DATA CAN BE DOWNLOADED HERE: [HTTP://SOPACCSRC.UCSD.EDU/](http://SOPACCSRC.UCSD.EDU/).



#### BASIS OF BEARINGS

THE BASIS OF BEARINGS FOR THIS SURVEY IS BASED ON THE CALIFORNIA COORDINATE SYSTEM (CCS83), ZONE VI, NAD 83, OCS (2017.50) EPOCH ADJUSTMENT, AS DETERMINED LOCALLY BY A LINE BETWEEN CONTINUOUS GLOBAL POSITIONING STATIONS CGPS STATIONS (SBCC) AND (WHYT) BEING NORTH 07°50'54" EAST AS DERIVED FROM THE COORDINATES PUBLISHED BY THE CALIFORNIA SPATIAL REFERENCE CENTER (CSRC) ALONG WITH DATA SHEETS ON FILE IN THE OFFICE OF THE ORANGE COUNTY SURVEYOR.

#### HORIZONTAL DATUM

COORDINATES SHOWN ARE BASED ON THE CALIFORNIA COORDINATE SYSTEM (CCS83), ZONE VI, NAD 83, OCS (2017.50) EPOCH ADJUSTMENT.

ALL DISTANCES SHOWN ARE GRID, UNLESS OTHERWISE NOTED. TO OBTAIN GROUND DISTANCES MULTIPLY GRID BY A COMBINED FACTOR OF 1.00006223.

THIS COMBINATION FACTOR WAS HELD AT: CP# 5700  
N: 2152135.64 E: 6141650.48 EL: 620.3

ALL DISTANCES ARE BASED ON THE U.S. SURVEY FOOT.

#### VERTICAL DATUM

O.C.S. BM. 3U-53-04 ELEV. = 583.200' YEAR LEVELED: 2004

NAVD 1988 (O.C.S. 1995 ADJUSTMENT)

DESCRIPTION: FOUND 3 3/4" OCS ALUMINUM BENCHMARK DISK STAMPED "3U-53-04", SET IN THE NORTHWESTERLY CORNER OF A 5 FT. BY 20 FT. CONCRETE CATCH BASIN. MONUMENT IS LOCATED IN THE SOUTHEASTERLY CORNER OF THE INTERSECTION OF CROWN VALLEY PARKWAY AND SIENNA PARKWAY, 58 FT. SOUTHERLY OF THE CENTERLINE OF CROWN VALLEY AND 82 FT. EASTERLY OF THE CENTERLINE OF SIENNA. MONUMENT IS SET LEVEL WITH THE SIDEWALK.

#### NOTES

THE SURVEY INFORMATION SHOWN HEREON IS TO BE USED FOR TOPOGRAPHIC RELATIONSHIPS ONLY AND IS NOT INTENDED FOR LAND ACQUISITION OR BOUNDARY PURPOSES.

#### SHEET INDEX

SHEET	NO.	DESCRIPTION
SHEET	1	TITLE SHEET
SHEET	2-6	BOUNDARY MAP
SHEETS	7-11	TOPOGRAPHIC MAP

#### PURPOSE OF SURVEY

THE PURPOSE OF THE SURVEY IS TO PROVIDE A TOPOGRAPHIC MAP AND RIGHT OF WAY ESTABLISHMENT FOR THIS PORTION OF ANTONIO PARKWAY AND CROWN VALLEY PARKWAY.

## TOPOGRAPHIC MAPPING PROJECT

			COUNTY OF ORANGE OC PUBLIC WORKS OC SURVEY/FIELD SERVICES/BOUNDARY ANALYSIS & MAPPING		
			ANTONIO PARKWAY AND CROWN VALLEY PARKWAY ROADWAY IMPROVEMENT		
			TITLE SHEET		
			PROJECT LIMITS: CROWN VALLEY PARKWAY FROM SIENNA PARKWAY TO 1ST DRIVEWAY EAST OF ANTONIO PARKWAY INTERSECTION; AND ANTONIO PARKWAY FROM 900' SOUTH OF CROWN VALLEY PARKWAY TO STATION WAY INTERSECTION		
			DATE OF SURVEY: 04/29/2022	BY: R. MACIAS AND CREW	SHEET NO.  1 of 11
			MAPPING	BY: A. VU & I. ISLAS	
			OFFICE CHECK	BY: J. MORENO, PLS	
			FIELD CHECK	BY: R. MACIAS AND CREW	
			SCALE: N.T.S.	W.O. #E019812S	
MARK	DATE	ITEM	FILE: ANTONIO PARKWAY_TOPO_2022.DWG		
		REVISIONS			



ESTABLISHMENT NOTES

- A

ESTABLISHED THE CENTERLINE OF CROWN VALLEY PARKWAY BY HOLDING A LINE BETWEEN MONUMENT NOTES [1](#) AND [2](#)
- B

ESTABLISHED THE CENTERLINE OF CROWN VALLEY PARKWAY HOLDING A RECORD RADIUS OF 3000.00 FEET PER R1 AND R2 TANGENT TO LINE ESTABLISHMENTS [A](#) AND [C](#)
- C

ESTABLISHED THE CENTERLINE OF CROWN VALLEY PARKWAY BY HOLDING A LINE BETWEEN MONUMENT NOTES [5](#) AND [6](#)
- D

ESTABLISHED THE CENTERLINE OF CROWN VALLEY PARKWAY HOLDING RECORD CURVE DATA PER R2 TANGENT TO ESTABLISHMENT NOTE [C](#)
- E

ESTABLISHED THE CENTERLINE OF CROWN VALLEY PARKWAY BY HOLDING A LINE BETWEEN MONUMENT NOTES [8](#) AND [9](#)
- F

ESTABLISHED THE CENTERLINE OF ANTONIO PARKWAY HOLDING A RECORD RADIUS OF 2100.00' PER R2 TANGENT TO LINE ESTABLISHMENTS [E](#) AND [C](#)
- G

ESTABLISHED THE CENTERLINE OF CROWN VALLEY PARKWAY BY HOLDING A LINE BETWEEN MONUMENT NOTES [12](#) AND [13](#)
- H

ESTABLISHED THE CENTERLINE OF SIENNA PARKWAY BY HOLDING RECORD COURSES PER R1 N'LY OF LINE ESTABLISHMENT [A](#) FROM MONUMENT NOTE [1](#)
- I

ESTABLISHED THE NE'LY LINE OF LOT H OF R15 BY HOLDING A LINE PARALLEL WITH, AND A RECORD DISTANCE OF 69.50 FEET PER R1 SW'LY FROM ESTABLISHMENT NOTE [A](#) AND HOLDING A SE'LY RECORD COURSE PER R15 FROM ESTABLISHMENT NOTE [E](#)
- J

ESTABLISHED THE INTERSECTION OF CROWN VALLEY PARKWAY AND ANTONIO PARKWAY BY INTERSECTION OF LINE ESTABLISHMENTS [B](#) AND [C](#)
- K

ESTABLISHED POINT ON CENTERLINE OF CROWN VALLEY PARKWAY BY HOLDING RECORD CURVE DATA PER R1 NW'LY ALONG LINE ESTABLISHMENT [B](#)
- L

ESTABLISHED POINT ON CENTERLINE OF ANTONIO PARKWAY BY HOLDING RECORD CURVE DATA PER R1 N'LY ALONG LINE ESTABLISHMENT [C](#)
- M

ESTABLISHED ANGLE POINT IN THE S'LY LINE OF LOT BO OF R1 BY HOLDING RECORD DISTANCE OF 77.55 FEET PER R1 NE'LY OF ESTABLISHMENT NOTE [K](#) ALONG RADIAL OF CURVE ESTABLISHMENT [E](#)
- N

ESTABLISHED ANGLE POINT IN THE W'LY RIGHT OF WAY OF ANTONIO PARKWAY BY HOLDING RECORD DISTANCE OF 91.00 FEET PER R1 SW'LY OF ESTABLISHMENT NOTE [C](#) ALONG RADIAL OF CURVE ESTABLISHMENT NOTE [C](#)
- O

ESTABLISHED THE NW'LY RIGHT OF WAY OF CROWN VALLEY PARKWAY AND ANTONIO PARKWAY BETWEEN ESTABLISHMENT NOTE [M](#) AND [N](#)
- P

ESTABLISHED THE SW'LY LINE OF LOT BO OF R1 BY HOLDING RECORD COURSES PER R1 NW'LY FROM ESTABLISHMENT NOTE [M](#)
- Q

ESTABLISHED THE SW'LY LINE OF LOT BO OF R1 BY HOLDING TANGENCY BETWEEN ESTABLISHMENT NOTES [C](#) AND [E](#)
- R

ESTABLISHED THE SW'LY LINE OF LOT BO OF R1 BY HOLDING TANGENCY BETWEEN ESTABLISHMENT NOTES [Q](#) AND [E](#)
- S

ESTABLISHED THE SW'LY LINE OF LOT BO OF R1 BY HOLDING A LINE PARALLEL WITH, AND A RECORD DISTANCE OF 75.50 FEET PER R1 FROM ESTABLISHMENT NOTE [A](#) AND HOLDING A NW'LY RECORD COURSE PER R1 FROM ESTABLISHMENT NOTE [R](#)
- T

ESTABLISHED THE NW'LY LINE OF LOT BO PER R1 BY HOLDING RECORD COURSES PER R1 NW'LY FROM ESTABLISHMENT NOTE [S](#)
- U

ESTABLISHED THE NE'LY LINE OF LOT H PER R15 BY HOLDING RECORD RADIUS AND TANGENCY PER R15 BETWEEN [L41](#) AND [L42](#)
- V

ESTABLISHED THE SW'LY RIGHT OF WAY OF CROWN VALLEY PARKWAY PER R15 BY HOLDING RECORD COURSES PER R15 BETWEEN [C57](#) AND [C59](#)
- W

ESTABLISHED THE E'LY LINE OF LOT BN PER R1 HOLDING A LINE PARALLEL WITH, AND A RECORD DISTANCE OF 31.00 FEET PER R1 SW'LY FROM ESTABLISHMENT NOTE [U](#) AND HOLDING RECORD COURSE FROM ESTABLISHMENT NOTE [N](#) PER R1
- X

ESTABLISHED THE NE'LY LINE OF LOT BN PER R1 BY HOLDING RECORD COURSES PER R1 NW'LY FROM ESTABLISHMENT NOTE [U](#)
- Y

ESTABLISHED THE SW'LY LINE OF LOT BN PER R1 BY HOLDING RECORD COURSES PER R1 NW'LY FROM ESTABLISHMENT NOTE [U](#) AND [C](#)
- Z

ESTABLISHED THE SW'LY LINE OF LOT BN PER R1 BY HOLDING RECORD COURSES PER R1 NW'LY FROM ESTABLISHMENT NOTE [C](#)
- AA

ESTABLISHED THE NE'LY LINE OF LOT BO HOLDING A LINE PARALLEL WITH, AND A RECORD DISTANCE OF 21.00 FEET PER R1 NE'LY FROM ESTABLISHMENT NOTES [C](#), [Q](#) AND [R](#)
- AB

ESTABLISHED THE NE'LY LINE OF LOT BO BY HOLDING RECORD CURVE DATA PER R1 NW'LY FROM ESTABLISHMENT NOTE [A](#)
- AC

ESTABLISHED THE NE'LY LINE OF LOT BP BY HOLDING RECORD CURVE DATA PER R1 FROM ESTABLISHMENT NOTE [AB](#)
- AD

ESTABLISHED THE NE'LY LINE OF LOT BO BY HOLDING RECORD COURSE PER R1 FROM ESTABLISHMENT NOTE [A](#)
- AE

ESTABLISHED THE NW'LY LINE OF LOT BO BY HOLDING TANGENCY AND RECORD RADIUS OF 100.00 FEET PER R1 FROM ESTABLISHMENT NOTE [B](#) AND [E](#)
- AF

ESTABLISHED THE E'LY RIGHT OF WAY ANTONIO PARKWAY PER R1 BY HOLDING A LINE PARALLEL WITH, AND A RECORD DISTANCE OF 60.00 FEET FROM LINE ESTABLISHMENT NOTE [E](#)
- AG

ESTABLISHED THE W'LY RIGHT OF WAY ANTONIO PARKWAY PER R15 BY HOLDING A LINE PARALLEL WITH, AND A RECORD DISTANCE OF 81.00 FEET FROM LINE ESTABLISHMENT NOTE [E](#)
- AH

ESTABLISHED POINT ON E'LY RIGHT OF WAY OF ANTONIO PARKWAY BY HOLDING [C](#) RECORD CURVE DATA AND DISTANCE PER R2 ALONG RADIAL OF LINE ESTABLISHMENT
- AI

ESTABLISHED THE W'LY LINE OF LOT E PER R2 BY HOLDING RECORD COURSES PER R2 SE'LY FROM ESTABLISHMENT NOTE [A](#)
- AJ

ESTABLISHED THE SW'LY LINE OF LOT D OF R2 BY HOLDING A LINE PARALLEL WITH, AND A RECORD DISTANCE OF 78.00 FEET PER R2 FROM ESTABLISHMENT NOTE [E](#) AND HOLDING A SE'LY RECORD COURSE PER R1 FROM ESTABLISHMENT NOTE [A](#)

ESTABLISHMENT NOTES

- AK

ESTABLISHED THE SW'LY LINE OF LOT D OF R2 BY HOLDING RECORD COURSES PER R2 SE'LY FROM ESTABLISHMENT NOTE [A](#)
- AL

ESTABLISHED THE SW'LY LINE OF LOT D OF R2 BY HOLDING A LINE PARALLEL WITH, AND A RECORD DISTANCE OF 68.00 FEET PER R2 FROM ESTABLISHMENT NOTE [D](#) AND HOLDING A SE'LY RECORD COURSE PER R2 FROM ESTABLISHMENT NOTE [A](#)
- AM

ESTABLISHED THE SE'LY LINE OF LOT D OF R2 BY HOLDING RECORD COURSES PER R2 NE'LY FROM ESTABLISHMENT NOTE [A](#)
- AN

ESTABLISHED THE NE'LY LINE OF LOT C OF R2 BY HOLDING RECORD CURVE DATA PER R2 NW'LY FROM ESTABLISHMENT NOTE [A](#)
- AO

ESTABLISHED THE NW'LY LINE OF LOT C OF R2 BY HOLDING RECORD COURSE DATA PER R2 SW'LY FROM ESTABLISHMENT NOTE [A](#)
- AP

ESTABLISHED THE SW'LY LINE OF LOT C OF R2 BY HOLDING RECORD CURVE DATA PER R2 SE'LY FROM ESTABLISHMENT NOTE [A](#)
- AQ

ESTABLISHED THE NW'LY LINE OF LOT D OF R2 BY HOLDING RECORD COURSE DATA PER R2 SW'LY FROM ESTABLISHMENT NOTE [A](#)
- AR

ESTABLISHED THE N'LY LINE OF LOT D OF R2 BY HOLDING RECORD COURSE DATA PER R2 S'LY AND W'LY FROM ESTABLISHMENT NOTE [A](#)
- AS

ESTABLISHED THE E'LY AND N'LY LINE OF LOT E OF R2 BY HOLDING RECORD COURSE DATA PER R2 NW'LY FROM ESTABLISHMENT NOTE [B](#)
- AT

ESTABLISHED POINT ON CENTERLINE OF ANTONIO PARKWAY BY HOLDING RECORD CURVE DATA AND DISTANCE PER R4 SW'LY ALONG LINE ESTABLISHMENT NOTE [F](#)
- AU

ESTABLISHED ANGLE POINT IN THE E'LY LINE OF LOT B BY HOLDING RECORD DISTANCE OF 81.00 FEET PER R4 NW'LY OF ESTABLISHMENT NOTE [A](#) ALONG RADIAL OF CURVE ESTABLISHMENT NOTE [C](#)
- AV

ESTABLISHED THE SE'LY LINE OF LOT B AND LOT C OF R4 BY HOLDING RECORD COURSE DATA PER R4 AND S'LY FROM ESTABLISHMENT NOTE [A](#)
- AW

ESTABLISHED THE S'LY LINE OF LOT B OF R4 BY HOLDING RECORD COURSE DATA PER R4 AND NW'LY FROM ESTABLISHMENT NOTE [C](#)
- AX

ESTABLISHED THE N'LY LINE OF LOT C OF R4 BY HOLDING RECORD COURSE DATA PER R4 AND NW'LY FROM ESTABLISHMENT NOTE [C](#)
- AY

ESTABLISHED THE S'LY LINE OF LOT C OF R15 BY HOLDING RECORD COURSE DATA PER R15 AND NW'LY FROM ESTABLISHMENT NOTE [E](#)
- AZ

ESTABLISHED THE W'LY LINE OF LOT C OF R4 BY HOLDING RECORD COURSE DATA PER R4 AND W'LY FROM ESTABLISHMENT NOTES [A](#) AND [A](#)
- BA

ESTABLISHED THE W'LY LINE OF LOT B OF R4 BY HOLDING RECORD COURSE DATA PER R4 AND W'LY FROM ESTABLISHMENT NOTES [A](#)
- BB

ESTABLISHED THE NE'LY LINE OF LOT A AND LOT B OF R4 BY HOLDING RECORD COURSE DATA PER R4 AND NW'LY FROM ESTABLISHMENT NOTE [A](#)
- BC

ESTABLISHED THE N'LY LINE OF LOT A PER R4 HOLDING A LINE PARALLEL WITH, AND A RECORD DISTANCE OF 78.00 FEET PER R4 SW'LY FROM ESTABLISHMENT NOTE [C](#) AND HOLDING RECORD COURSE FROM ESTABLISHMENT NOTE [B](#) PER R4
- BD

ESTABLISHED THE N'LY, W'LY AND S'LY LINE OF LOT A AND G OF R4 BY HOLDING RECORD COURSE DATA PER R4 AND NW'LY FROM ESTABLISHMENT NOTE [B](#)
- BE

ESTABLISHED THE SW'LY AND NW'LY LINE OF LOT H OF R4 BY HOLDING RECORD COURSE DATA PER R4 AND SW'LY FROM ESTABLISHMENT NOTE [E](#)
- BF

ESTABLISHED THE SE'LY LINE OF LOT H OF R4 BY HOLDING RECORD COURSE DATA PER R4 AND NE'LY FROM ESTABLISHMENT NOTE [E](#)
- BG

ESTABLISHED THE S'LY LINE OF LOT G PER R4 HOLDING A LINE PARALLEL WITH, AND A RECORD DISTANCE OF 21.00 FEET PER R4 S'LY FROM ESTABLISHMENT NOTE [A](#) AND HOLDING RECORD COURSE SE'LY FROM ESTABLISHMENT NOTE [E](#) PER R4
- BH

ESTABLISHED THE SW'LY LINE OF LOT B OF R4 BY HOLDING RECORD COURSE DATA PER R4 AND BETWEEN ESTABLISHMENT NOTES [A](#) AND [E](#)
- BI

ESTABLISHED POINT ON CENTERLINE OF CROWN VALLEY PARKWAY BY HOLDING RECORD CURVE DATA AND DISTANCE PER R3 SE'LY ALONG LINE ESTABLISHMENT NOTE [C](#)
- BJ

ESTABLISHED ANGLE POINT OF CROWN VALLEY PARKWAY BY HOLDING RECORD DISTANCE OF 72.00 FEET PER R3 SW'LY OF ESTABLISHMENT NOTE [B](#) ALONG RADIAL OF CURVE ESTABLISHMENT NOTE [C](#)
- BK

ESTABLISHED THE NW'LY LINE OF LOT U OF R3 BY HOLDING RECORD COURSE DATA PER R3 AND SW'LY FROM ESTABLISHMENT NOTE [B](#)
- BL

ESTABLISHED THE W'LY LINE OF LOT U PER R3 HOLDING A LINE PARALLEL WITH, AND A RECORD DISTANCE OF 70.00 FEET PER R3 SE'LY FROM ESTABLISHMENT NOTE [C](#) AND HOLDING RECORD COURSE SW'LY FROM ESTABLISHMENT NOTE [B](#) PER R4
- BM

ESTABLISHED THE NW'LY LINE OF LOT U OF R3 BY HOLDING RECORD COURSE DATA PER R3 AND SW'LY FROM ESTABLISHMENT NOTE [B](#)
- BN

ESTABLISHED THE W'LY LINE OF LOT T PER R3 HOLDING A LINE PARALLEL WITH, AND A RECORD DISTANCE OF 60.00 FEET PER R3 SE'LY FROM ESTABLISHMENT NOTE [C](#) AND HOLDING RECORD COURSE SW'LY FROM ESTABLISHMENT NOTE [B](#) PER R4
- BO

ESTABLISHED THE N'LY LINE OF LOT U OF R3 BY HOLDING RECORD COURSE DATA PER R3 AND SW'LY FROM ESTABLISHMENT NOTE [B](#)
- BP

ESTABLISHED THE N'LY, E'LY, AND S'LY LINE OF LOT U AND V OF R3 BY HOLDING RECORD COURSE DATA PER R3 AND SW'LY, SE'LY, NW'LY AND NE'LY FROM ESTABLISHMENT NOTE [B](#)
- BQ

ESTABLISHED THE W'LY LINE OF LOT T PER R3 HOLDING A LINE PARALLEL WITH, AND A RECORD DISTANCE OF 60.00 FEET PER R3 SE'LY FROM ESTABLISHMENT NOTE [C](#) AND HOLDING RECORD COURSE SW'LY FROM ESTABLISHMENT NOTE [B](#) PER R4
- BR

ESTABLISHED THE NW'LY RIGHT OF WAY OF ANTONIO PARKWAY PER R15 BY HOLDING RECORD COURSES FROM ESTABLISHMENT NOTE [A](#)
- BS

ESTABLISHED THE NW'LY RIGHT OF WAY OF ANTONIO PARKWAY PER R15 BY HOLDING RECORD COURSES BETWEEN ESTABLISHMENT NOTES [A](#) AND [A](#)

MONUMENT NOTES

- 1

FD BOAT SPIKE AND 1-1/2 INCH WASHER STAMPED 'LS 5557', PER R1, FLUSH WITH A.C., ACCEPTED AS INTERSECTION OF SIENNA PARKWAY AND CROWN VALLEY PARKWAY.
- 2

FD 2 INCH IRON PIPE--CONC PLUG AND 3/4 INCH TAG STAMPED 'PLS 5557', PER R1, FLUSH WITH DIRT, ACCEPTED AS A POINT ON CENTERLINE OF CROWN VALLEY PARKWAY, N65°19'59"W 0.29 FEET FROM CENTERLINE BC OF CROWN VALLEY PARKWAY
- 3

FD BOAT SPIKE AND 1-1/2 INCH WASHER STAMPED 'OCS', PER R1, FLUSH WITH A.C., N88°31'20"E 0.13 FEET FROM CENTERLINE INTERSECTION OF CROWN VALLEY PARKWAY AND ANTONIO PARKWAY
- 4

FD BOAT SPIKE AND 1-1/2 INCH WASHER STAMPED 'OCS', PER R10, FLUSH WITH A.C., ACCEPTED AS A POINT ON CENTERLINE OF CROWN VALLEY PARKWAY
- 5

FD GEAR SPIKE AND 1-1/2 INCH BRASS WASHER STAMPED 'RCE 28946', PER R11, FLUSH WITH A.C., ACCEPTED AS A POINT ON CENTERLINE OF CROWN VALLEY PARKWAY, N82°26'06"E 1.21 FEET FROM CENTERLINE EC FROM CROWN VALLEY PARKWAY
- 6

FD LEAD--TACK AND 3/4 INCH TAG STAMPED 'RCE 28946', PER R11, ON TOP OF CURB, ACCEPTED AS CENTERLINE BC OF CROWN VALLEY PARKWAY
- 7

FD GEAR SPIKE AND 1-1/2 INCH BRASS WASHER STAMPED 'RCE 28946', PER R2, FLUSH WITH A.C., ACCEPTED AS A POINT ON CENTERLINE OF CROWN VALLEY PARKWAY
- 8

FD 2 INCH BRASS DISK, PER R2, DN. 0.35' IN MONUMENT WELL MON, ACCEPTED AS A POINT ON CENTERLINE OF ANTONIO PARKWAY
- 9

FD 2 INCH BRASS DISK, PER R2, DN. 1.70' IN OCS MONUMENT WELL MON, ACCEPTED AS A POINT ON CENTERLINE OF ANTONIO PARKWAY, S43°27'15"E 1.33 FEET FROM CENTERLINE EC OF ANTONIO PARKWAY
- 10

FD 2 INCH ID IRON PIPE--CONC PLUG AND 3/4 INCH TAG STAMPED 'PLS 5557', PER R12, FLUSH WITH DIRT, N65°41'60"E 0.10 FEET FROM CENTERLINE OF ANTONIO PARKWAY.
- 11

FD GEAR SPIKE AND 1-1/2 INCH BRASS WASHER STAMPED 'RCE 28946', PER R2, FLUSH DN. 0.05' IN A.C., N74°41'16"E 0.06 FEET FROM CENTERLINE OF ANTONIO PARKWAY.
- 12

FD 2 INCH BRASS DISK, PER R3, DN. 2.00' IN OCS MONUMENT WELL MON, ACCEPTED AS A POINT ON CENTERLINE OF ANTONIO PARKWAY, S16°22'29"W 0.32 FEET FROM CENTERLINE EC OF ANTONIO PARKWAY
- 13

FD 2 INCH BRASS DISK, PER R3, DN. 2.0' IN MONUMENT WELL MON, ACCEPTED AS POINT ON CENTERLINE OF ANTONIO PARKWAY
- 14

FD 2 INCH IRON PIPE--CONC PLUG AND 3/4 INCH TAG STAMPED 'PLS 5557', PER R1, DN. 0.25' IN DIRT, N65°20'00"W 0.05 FEET FROM CENTERLINE OF SIENNA PARKWAY

REFERENCES

- (R1) = TRACT NO. 15615, M.M. 777/14--31
- (R2) = TRACT NO. 15619, M.M. 814/3--6
- (R3) = TRACT NO. 16063, M.M. 818/32--40
- (R4) = TRACT NO. 15884, M.M. 794/33--44
- (R10) = CORNER RECORD, C.R. 2020--1643
- (R11) = CORNER RECORD, C.R. 2004--1656
- (R12) = CORNER RECORD, C.R. 2000--0617
- (R15) = PARCEL MAP NO. 2003--105, P.M.B. 337/1--10

NOTES

- ALL BOUNDARY LINES NOT SHOWN IN BOLD ARE FOR GRAPHICAL REPRESENTATION ONLY.
- RECORD DISTANCES SHOWN HEREON ARE AS THEY APPEAR ON THE DOCUMENT OF RECORD. DISTANCES MAY BE EITHER GRID OR GROUND, AS PER SAID RECORD.
- REFERENCE DOCUMENTS IN THE REFERENCE LEGEND ARE LIVE HYPERLINKS TO SAID DOCUMENT.
- MONUMENT SYMBOLS CONTAIN LIVE HYPERLINKS TO IMAGES, IF THEY EXIST, OF RESPECTIVE MONUMENT.

BASIS OF BEARINGS

THE BASIS OF BEARINGS FOR THIS SURVEY IS BASED ON THE CALIFORNIA COORDINATE SYSTEM (CCS83), ZONE VI, NAD 83, OCS (2017.50) EPOCH ADJUSTMENT, AS DETERMINED LOCALLY BY A LINE BETWEEN CONTINUOUS GLOBAL POSITIONING STATIONS CGPS STATIONS (SBCC) AND (WHYT) BEING NORTH 07°50'54" EAST AS DERIVED FROM THE COORDINATES PUBLISHED BY THE CALIFORNIA SPATIAL REFERENCE CENTER (CSRC) ALONG WITH DATA SHEETS ON FILE IN THE OFFICE OF THE ORANGE COUNTY SURVEYOR.

HORIZONTAL DATUM

- COORDINATES SHOWN ARE BASED ON THE CALIFORNIA COORDINATE SYSTEM (CCS83), ZONE VI, NAD 83, OCS (2017.50) EPOCH ADJUSTMENT.
- ALL DISTANCES SHOWN ARE GRID, UNLESS OTHERWISE NOTED. TO OBTAIN GROUND DISTANCE MULTIPLY A GRID DISTANCE BY 1.00006223.
- THIS COMBINATION FACTOR WAS HELD AT: CP# 5700  
N:2152135.64 E:6141650.48 EL:620.3'
- RECORD DISTANCES SHOWN HEREON ARE AS THEY APPEAR ON THE DOCUMENT OF RECORD. DISTANCES MAY BE EITHER GRID OR GROUND, AS PER SAID RECORD.
- ALL DISTANCES ARE BASED ON THE U.S. SURVEY FOOT.

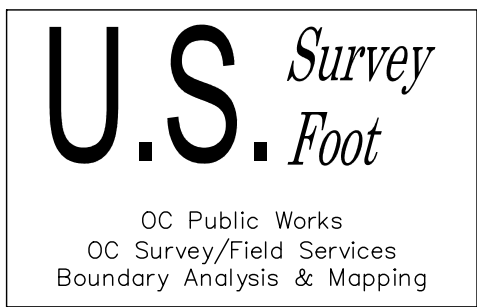
EASEMENT NOTES

- 1

EASEMENT FOR SCENIC PRESERVATION PURPOSES DEDICATED TO THE COUNTY OF ORANGE PER R1,R2, & R3
- 2

EASEMENT FOR SAN DIEGO GAS AND ELECTRIC COMPANY PER R2 AND R3
- 3

SIDEWALK EASEMENT DEDICATED TO THE COUNTY OF ORANGE PER R4



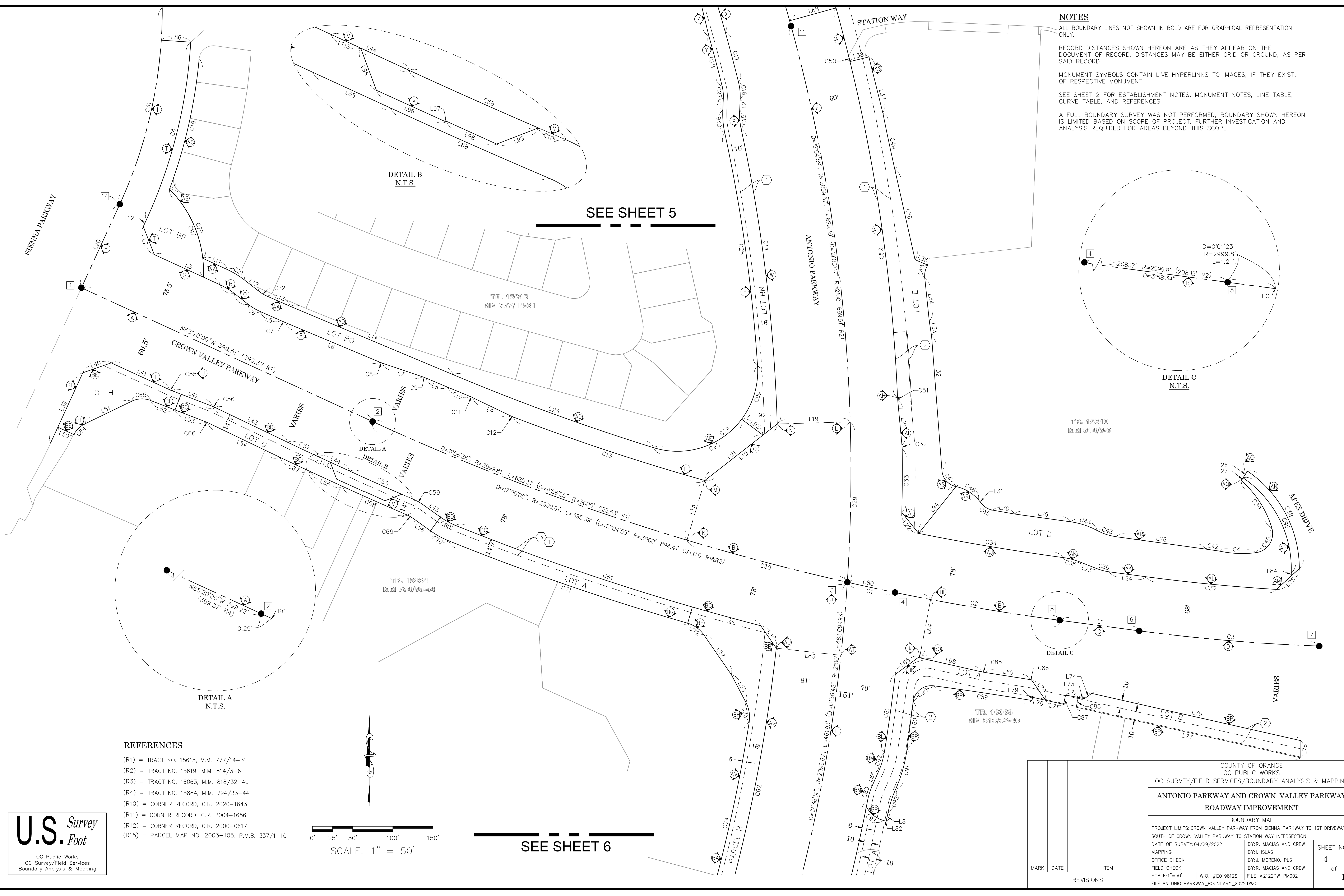
			COUNTY OF ORANGE OC PUBLIC WORKS OC SURVEY/FIELD SERVICES/BOUNDARY ANALYSIS & MAPPING			
			ANTONIO PARKWAY AND CROWN VALLEY PARKWAY ROADWAY IMPROVEMENT			
			BOUNDARY MAP			
			PROJECT LIMITS: CROWN VALLEY PARKWAY FROM SIENNA PARKWAY TO 1ST DRIVEWAY			
			SOUTH OF CROWN VALLEY PARKWAY TO STATION WAY INTERSECTION			
MARK	DATE	ITEM	DATE OF SURVEY:04/29/2022		BY:R. MACIAS AND CREW	SHEET NO.  2 of 11
			MAPPING		BY:I. ISLAS	
			OFFICE CHECK		BY:J. MORENO, PLS	
			FIELD CHECK		BY:R. MACIAS AND CREW	
			SCALE:N.T.S.		W.O. #E0198125	
REVISIONS						FILE:ANTONIO PARKWAY_BOUNDARY_2022.DWG

CURVE TABLE						
CURVE #	DELTA	RADIUS	LENGTH	RECORD DELTA	RECORD RADIUS	RECORD LENGTH
C1	1°09'39"	2999.81'	60.78'	1°09'29" (R2)	3000.00' (R2)	60.63' (R2)
C2	3°59'56"	2999.81'	209.37'	3°58'31" (R2)	3000.00' (R2)	208.15' (R2)
C3	5°29'20"	2349.85'	225.11'	5°29'20" (R2)	2350.00' (R2)	225.13' (R2)
C4	21°18'39"	616.96'	229.48'	21°18'39" (R1)	617.00' (R1)	229.49' (R1)
C5	13°25'46"	88.99'	20.86'	13°25'22" (R1)	89.00' (R1)	20.85' (R1)
C6	14°22'39"	71.00'	17.82'	14°22'39" (R1)	71.00' (R1)	17.82' (R1)
C7	0°57'18"	390.98'	6.52'	0°57'18" (R1)	391.00' (R1)	6.52' (R1)
C8	4°03'08"	41.00'	2.90'	4°03'08" (R1)	41.00' (R1)	2.90' (R1)
C9	4°03'08"	59.00'	4.17'	4°03'08" (R1)	59.00' (R1)	4.17' (R1)
C10	0°36'51"	2784.33'	29.85'	0°36'51" (R1)	2784.50' (R1)	29.85' (R1)
C11	3°26'48"	59.00'	3.55'	3°26'48" (R1)	59.00' (R1)	3.55' (R1)
C12	4°40'32"	41.00'	3.35'	4°40'32" (R1)	41.00' (R1)	3.35' (R1)
C13	5°09'44"	2788.33'	251.22'	5°09'44" (R1)	2788.50' (R1)	251.24' (R1)
C14	10°33'57"	2008.87'	370.45'	10°33'57" (R1)	2009.00' (R1)	370.48' (R1)
C15	14°46'27"	88.99'	22.95'	14°46'27" (R1)	89.00' (R1)	22.95' (R1)
C16	16°24'40"	71.00'	20.34'	16°24'40" (R1)	71.00' (R1)	20.34' (R1)
C17	1°51'27"	2018.87'	65.45'	1°51'27" (R1)	2019.00' (R1)	65.45' (R1)
C18	2°52'49"	1761.79'	88.57'	2°20'07" (R1)	2172.00' (R1)	88.53' (R1)
C19	15°17'23"	625.98'	167.05'	15°17'23" (R1)	626.00' (R1)	167.05' (R1)
C20	38°29'49"	144.99'	97.42'	38°29'49" (R1)	145.00' (R1)	97.43' (R1)
C21	13°25'46"	109.99'	25.78'	13°25'22" (R1)	110.00' (R1)	25.77' (R1)
C22	14°22'39"	50.00'	12.55'	14°22'39" (R1)	50.00' (R1)	12.55' (R1)
C23	5°30'11"	2768.83'	265.94'	5°30'15" (R1)	2769.00' (R1)	266.01' (R1)
C24	111°03'17"	99.99'	193.81'	111°03'01" (R1)	100.00' (R1)	193.82' (R1)
C25	8°27'15"	1987.87'	293.32'	8°27'25" (R1)	1988.00' (R1)	293.43' (R1)
C26	14°46'27"	109.99'	28.36'	14°46'27" (R1)	110.00' (R1)	28.36' (R1)
C27	16°24'40"	50.00'	14.32'	16°24'40" (R1)	50.00' (R1)	14.32' (R1)
C28	1°51'27"	1997.87'	64.77'	1°51'27" (R1)	1998.00' (R1)	64.77' (R1)
C29	5°27'15"	2099.84'	199.89'	5°27'15" (R1)	2100.00' (R1)	199.91' (R1)
C30	3°56'54"	2998.19'	206.61'	3°56'46" (R1)	3000.00' (R1)	206.62' (R1)
C31	24°56'02"	579.96'	252.39'	24°56'02" (R1)	580.00' (R1)	252.40' (R1)
C32	4°39'08"	59.00'	4.79'	4°39'08" (R2)	59.00' (R2)	4.79' (R2)
C33	2°05'30"	2163.87'	79.00'	2°05'30" (R2)	2164.00' (R2)	79.00' (R2)
C34	3°34'42"	2921.82'	182.48'	3°34'42" (R2)	2922.00' (R2)	182.49' (R2)
C35	13°45'45"	90.00'	21.62'	13°45'45" (R2)	90.01' (R2)	21.62' (R2)
C36	13°52'51"	66.00'	15.99'	13°52'51" (R2)	66.00' (R2)	15.99' (R2)
C37	4°05'22"	2281.86'	162.87'	4°05'22" (R2)	2282.00' (R2)	162.88' (R2)
C38	55°42'55"	146.99'	142.94'	55°42'55" (R2)	147.00' (R2)	142.94' (R2)
C39	32°11'18"	126.99'	71.34'	32°11'18" (R2)	127.00' (R2)	71.35' (R2)
C40	99°41'39"	24.00'	41.76'	99°41'39" (R2)	24.00' (R2)	41.76' (R2)
C41	19°20'04"	135.99'	45.89'	19°20'04" (R2)	136.00' (R2)	45.89' (R2)
C42	0°21'44"	2646.84'	16.73'	0°21'44" (R2)	2647.00' (R2)	16.73' (R2)
C43	20°40'06"	69.00'	24.89'	20°40'06" (R2)	69.00' (R2)	24.89' (R2)
C44	20°37'55"	95.99'	34.57'	20°37'55" (R2)	96.00' (R2)	34.57' (R2)
C45	39°45'42"	22.00'	15.27'	39°45'42" (R2)	22.00' (R2)	15.27' (R2)
C46	38°09'46"	50.00'	33.30'	38°09'46" (R2)	50.00' (R2)	33.30' (R2)
C47	73°58'31"	22.00'	28.40'	73°58'31" (R2)	22.00' (R2)	28.40' (R2)
C48	39°10'02"	24.00'	16.41'	39°10'02" (R2)	24.00' (R2)	16.41' (R2)
C49	1°21'28"	3068.81'	72.72'	1°21'28" (R2)	3069.00' (R2)	72.73' (R2)
C50	0°12'07"	2158.90'	7.61'	0°12'07" (R2)	2160.00' (R2)	7.61' (R2)
C51	2°57'34"	41.00'	2.12'	2°57'34" (R2)	41.00' (R2)	2.12' (R2)
C52	13°04'24"	2159.87'	492.82'	13°04'24" (R2)	2160.00' (R2)	492.85' (R2)
C55	3°33'03"	59.00'	3.66'	3°33'25" (R4)	59.00' (R4)	3.66' (R4)
C56	4°30'43"	41.00'	3.23'	4°30'43" (R4)	41.00' (R4)	3.23' (R4)
C57	0°57'18"	2552.84'	42.55'	0°57'18" (R4)	2553.00' (R4)	42.55' (R4)
C58	1°36'21"	3067.81'	85.98'	1°36'21" (R4)	3068.00' (R4)	85.99' (R4)
C59	12°33'19"	71.00'	15.56'	12°33'19" (R4)	71.00' (R4)	15.56' (R4)
C60	13°42'07"	88.99'	21.28'	13°42'07" (R4)	89.00' (R4)	21.28' (R4)
C61	7°27'34"	3077.81'	400.71'	7°27'34" (R4)	3078.00' (R4)	400.73' (R4)
C62	10°07'14"	2018.87'	356.61'	10°07'14" (R4)	2019.00' (R4)	356.63' (R4)
C63	1°13'39"	1852.88'	39.70'	1°13'39" (R4)	1853.00' (R4)	39.70' (R4)
C64	37°05'35"	30.00'	19.42'	37°05'35" (R4)	30.00' (R4)	19.42' (R4)
C65	46°58'51"	30.00'	24.60'	46°58'51" (R4)	30.00' (R4)	24.60' (R4)
C66	4°30'43"	23.00'	1.81'	4°30'43" (R4)	23.00' (R4)	1.81' (R4)
C67	0°57'18"	2573.84'	42.90'	0°57'18" (R4)	2574.00' (R4)	42.90' (R4)
C68	1°36'21"	3088.81'	86.57'	1°36'21" (R4)	3089.81' (R4)	86.58' (R4)
C69	12°33'19"	50.00'	10.96'	12°33'19" (R4)	50.00' (R4)	10.96' (R4)
C70	13°42'07"	109.99'	26.30'	13°42'07" (R4)	110.00' (R4)	26.31' (R4)
C71	5°49'08"	3098.81'	314.71'	5°49'08" (R4)	3099.00' (R4)	314.73' (R4)
C72	39°15'38"	37.00'	25.35'	39°15'38" (R4)	37.00' (R4)	25.35' (R4)
C73	36°39'23"	39.00'	24.95'	36°39'23" (R4)	39.00' (R4)	24.95' (R4)
C74	7°23'25"	1997.88'	257.70'	7°23'25" (R4)	1998.00' (R4)	257.71' (R4)
C75	0°25'55"	1873.88'	14.13'	0°25'55" (R4)	1874.00' (R4)	14.13' (R4)
C76	0°25'55"	1852.88'	13.97'	0°25'55" (R4)	1853.00' (R4)	13.97' (R4)
C77	0°47'44"	1852.88'	25.73'	0°47'44" (R4)	1853.00' (R4)	25.73' (R4)
C80	2°01'27"	2999.81'	105.98'	2°01'27" (R3)	3000.00' (R3)	105.99' (R3)
C81	2°36'31"	2169.86'	98.79'	2°36'31" (R3)	2170.00' (R3)	98.79' (R3)
C82	14°22'48"	88.99'	22.34'	14°22'48" (R3)	89.00' (R3)	22.34' (R3)
C83	12°44'35"	80.99'	18.01'	12°44'35" (R3)	81.00' (R3)	18.02' (R3)
C84	5°26'47"	2159.87'	205.31'	5°26'47" (R3)	2160.00' (R3)	205.33' (R3)
C85	3°45'58"	59.00'	3.88'	3°45'58" (R3)	59.00' (R3)	3.88' (R3)
C86	1°32'04"	41.00'	1.10'	1°32'04" (R3)	41.00' (R3)	1.10' (R3)
C87	2°15'16"	299.98'	11.80'	2°15'16" (R3)	300.00' (R3)	11.80' (R3)
C88	2°14'49"	315.98'	12.39'	2°14'49" (R3)	316.00' (R3)	12.39' (R3)
C89	1°43'55"	4084.73'	123.47'	1°43'55" (R3)	4084.98' (R3)	123.48' (R3)
C90	90°15'13"	23.00'	36.23'	90°15'13" (R3)	23.00' (R3)	36.23' (R3)
C91	16°53'33"	176.99'	52.18'	16°53'33" (R3)	177.00' (R3)	52.19' (R3)
C92	12°16'20"	140.99'	30.20'	12°16'20" (R3)	141.00' (R3)	30.20' (R3)
C93	47°49'42"	34.00'	28.38'	47°49'42" (R3)	34.00' (R3)	28.38' (R3)
C94	2°29'34"	2099.87'	91.36'	2°29'34" (R4)	2100.00' (R4)	91.37' (R4)
C95	57°59'03"	137.00'	138.64'	57°59'03" (R2)	137.00' (R2)	138.65' (R2)
C97	47°46'48"	144.99'	120.91'	47°46'48" (R1)	145.00' (R1)	120.92' (R1)
C98	70°24'44"	99.99'	122.88'	70°24'38" (R1)	100.00' (R1)	122.89' (R1)
C99	40°38'33"	99.99'	70.93'	40°38'23" (R1)	100.00' (R1)	70.93' (R1)
C100	0°16'55"	3067.81'	15.09'	0°16'55" (R15)	3068.00' (R15)	15.10' (R15)
C101	0°25'57"	1852.88'	13.99'	0°25'55" (R15)	1853.00' (R15)	13.97' (R15)

LINE TABLE			
LINE #	BEARING	MEASURED DISTANCE	RECORD DISTANCE
L1	N82°26'06"W	98.78'	100.00' (R2)
L2	N21°24'39"W	37.48'	37.48' (R1)
L3	N65°20'00"W	90.39'	90.40' (R1)
L4	N51°54'14"W	21.70'	22.13' (R1)
L5	N66°16'53"W	28.04'	28.04' (R1)
L6	N67°14'11"W	127.31'	127.32' (R1)
L7	N71°17'19"W	53.07'	53.07' (R1)
L8	N67°14'11"W	30.01'	30.01' (R1)
L9	N64°24'14"W	53.01'	53.01' (R1)
L10	N52°02'07"E	114.46'	114.47' (R1)
L11	N65°20'00"W	33.51'	33.51' (R1)
L12	N51°54'14"W	21.70'	22.13' (R1)
L13	N66°16'53"W	31.37'	31.37' (R1)
L14	N67°14'15"W	220.15'	220.15' (R1)
L15	N02°31'18"E	15.35'	15.35' (R1)
L17	N13°39'07"W	87.85'	15.35' (R1)
L18	N16°40'15"E	77.55'	77.55' (R1)
L19	N88°19'00"E	91.00'	91.00' (R1)
L20	N24°40'00"E	114.58'	114.59' (R1)
L21	N05°23'22"W	57.10'	57.10' (R2)
L22	N38°40'44"W	33.45'	33.45' (R2)
L23	N68°31'41"W	22.72'	22.72' (R2)
L24	N82°24'32"W	46.73'	46.73' (R2)
L25	N47°40'53"E	38.66'	38.66' (R2)
L26	N34°07'05"E	10.00'	10.00' (R2)
L27	N34°07'05"E	4.16'	4.16' (R2)
L28	N82°07'48"W	113.22'	113.23' (R2)
L29	N82°05'37"W	70.66'	70.66' (R2)
L30	N79°58'46"W	27.97'	27.97' (R2)
L31	N40°13'04"W	6.82'	6.82' (R2)
L32	N04°24'19"W	167.98'	167.99' (R2)
L33	N08°48'31"W	18.95'	18.95' (R2)
L34	N05°57'16"W	54.39'	54.39' (R2)
L35	N66°45'24"W	17.28'	17.28' (R2)
L36	N12°38'38"W	114.50'	114.50' (R2)
L37	N14°00'06"W	71.81'	71.81' (R2)
L38	N76°19'18"E	24.22'	24.16' (R2)
L39	N24°40'22"E	96.21'	96.22' (R4)
L40	N70°45'14"E	37.42'	37.48' (R4)
L41	N65°20'00"W	79.58'	80.00' (R4)
L42	N68°53'03"W	54.27'	53.81' (R4)
L43	N64°22'20"W	100.26'	100.27' (R4)
L44	N65°19'38"W	42.98'	42.98' (R4)
L45	N54°22'40"W	25.65'	25.65' (R4)
L46	N34°38'17"W	34.05'	34.05' (R4)
L47	N16°23'02"E	11.70'	11.70' (R4)
L48	N15°09'23"E	74.45'	74.45' (R4)
L49	N15°09'23"E	362.56'	362.24' (R4)
L50	N65°19'38"W	22.05'	22.27' (R4)
L51	N64°12'32"E	64.60'	64.60' (R4)
L52	N68°48'37"W	32.44'	32.44' (R4)
L53	N68°53'03"W	41.72'	41.72' (R4)
L54	N64°22'20"W	100.14'	100.15' (R4)
L55	N65°19'38"W	42.98'	42.98' (R4)
L56	N54°22'40"W	25.65'	25.65' (R4)

LINE TABLE			
LINE #	BEARING	MEASURED DISTANCE	RECORD DISTANCE
L57	N34°38'17"W	60.32'	60.32' (R4)
L58	N27°39'46"W	39.27'	39.27' (R4)
L59	N16°23'02"E	11.70'	11.70' (R4)
L60	N74°02'53"W	21.00'	21.00' (R4)
L61	N73°36'58"W	21.00'	21.00' (R4)
L62	N15°09'28"E	202.19'	202.19' (R15)
L64	N10°42'00"E	72.00'	72.00' (R3)
L65	N53°41'45"E	38.03'	38.03' (R3)
L66	N23°40'50"E	22.50'	22.50' (R3)
L67	N16°23'02"E	701.22'	701.26' (R3)
L68	N77°16'33"W	81.27'	81.28' (R3)
L69	N81°02'31"W	57.61'	57.61' (R3)
L70	N34°33'39"W	30.91'	30.91' (R3





**NOTES**

ALL BOUNDARY LINES NOT SHOWN IN BOLD ARE FOR GRAPHICAL REPRESENTATION ONLY.

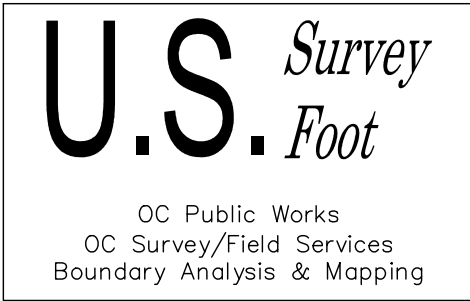
RECORD DISTANCES SHOWN HEREON ARE AS THEY APPEAR ON THE DOCUMENT OF RECORD. DISTANCES MAY BE EITHER GRID OR GROUND, AS PER SAID RECORD.

MONUMENT SYMBOLS CONTAIN LIVE HYPERLINKS TO IMAGES, IF THEY EXIST, OF RESPECTIVE MONUMENT.

SEE SHEET 2 FOR ESTABLISHMENT NOTES, MONUMENT NOTES, LINE TABLE, CURVE TABLE, AND REFERENCES.

A FULL BOUNDARY SURVEY WAS NOT PERFORMED. BOUNDARY SHOWN HEREON IS LIMITED BASED ON SCOPE OF PROJECT. FURTHER INVESTIGATION AND ANALYSIS REQUIRED FOR AREAS BEYOND THIS SCOPE.

- REFERENCES**
- (R1) = TRACT NO. 15615, M.M. 777/14-31
  - (R2) = TRACT NO. 15619, M.M. 814/3-6
  - (R3) = TRACT NO. 16063, M.M. 818/32-40
  - (R4) = TRACT NO. 15884, M.M. 794/33-44
  - (R10) = CORNER RECORD, C.R. 2020-1643
  - (R11) = CORNER RECORD, C.R. 2004-1656
  - (R12) = CORNER RECORD, C.R. 2000-0617
  - (R15) = PARCEL MAP NO. 2003-105, P.M.B. 337/1-10



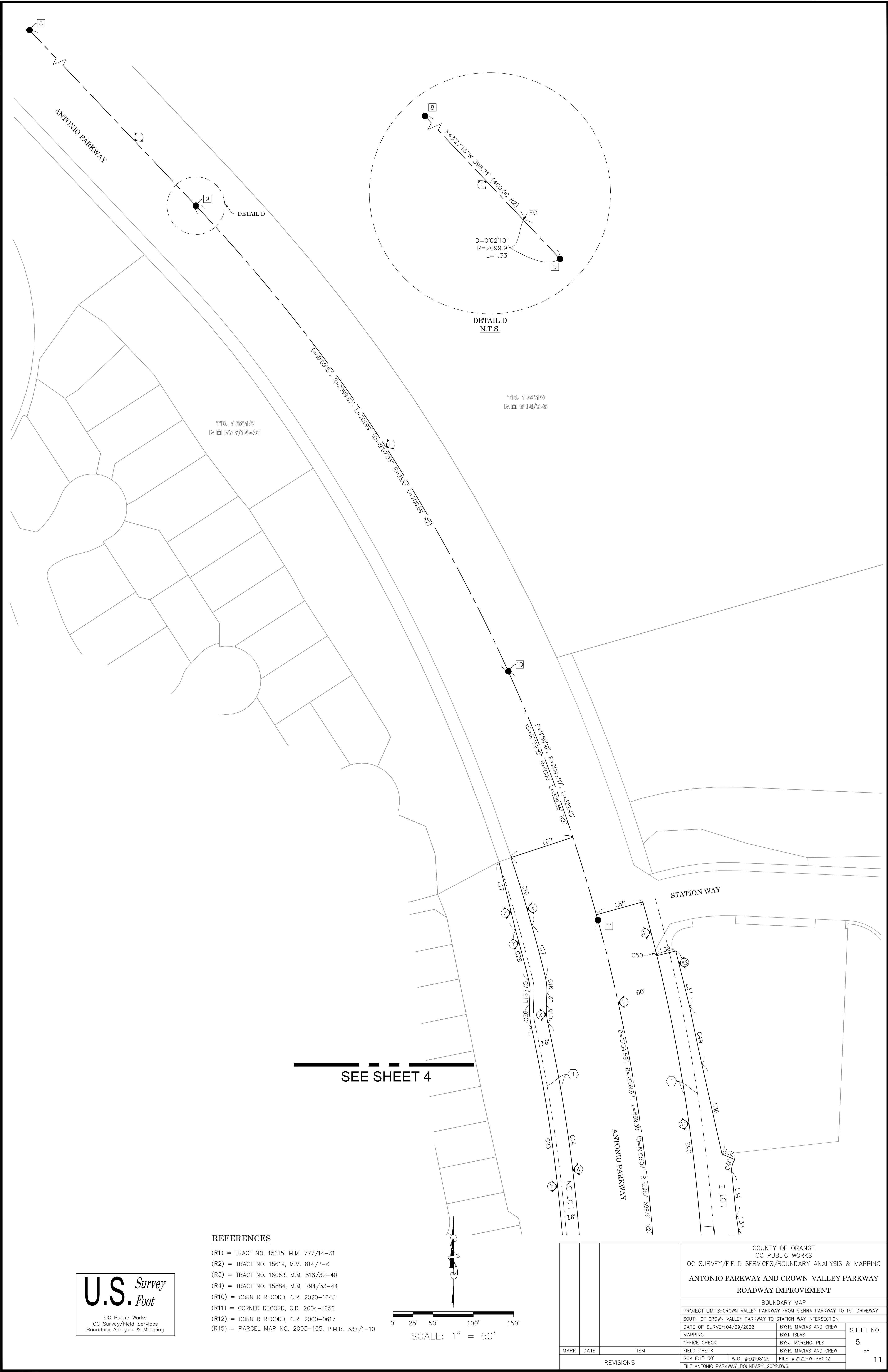
0' 25' 50' 100' 150'

SCALE: 1" = 50'

SEE SHEET 6

			COUNTY OF ORANGE OC PUBLIC WORKS OC SURVEY/FIELD SERVICES/BOUNDARY ANALYSIS & MAPPING				
			ANTONIO PARKWAY AND CROWN VALLEY PARKWAY ROADWAY IMPROVEMENT				
			BOUNDARY MAP				
			PROJECT LIMITS: CROWN VALLEY PARKWAY FROM SIENNA PARKWAY TO 1ST DRIVEWAY SOUTH OF CROWN VALLEY PARKWAY TO STATION WAY INTERSECTION				
			DATE OF SURVEY: 04/29/2022		BY: R. MACIAS AND CREW		SHEET NO.  4  of  11
			MAPPING		BY: I. ISLAS		
			OFFICE CHECK		BY: J. MORENO, PLS		
			FIELD CHECK		BY: R. MACIAS AND CREW		
			SCALE: 1"=50'		W.O. #EQ19812S		
			FILE: ANTONIO PARKWAY_BOUNDARY_2022.DWG		FILE # 2122PW-PM002		
MARK	DATE	ITEM	REVISIONS				

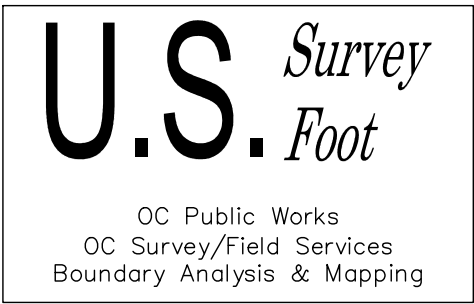




SEE SHEET 4

REFERENCES

- (R1) = TRACT NO. 15615, M.M. 777/14-31
- (R2) = TRACT NO. 15619, M.M. 814/3-6
- (R3) = TRACT NO. 16063, M.M. 818/32-40
- (R4) = TRACT NO. 15884, M.M. 794/33-44
- (R10) = CORNER RECORD, C.R. 2020-1643
- (R11) = CORNER RECORD, C.R. 2004-1656
- (R12) = CORNER RECORD, C.R. 2000-0617
- (R15) = PARCEL MAP NO. 2003-105, P.M.B. 337/1-10

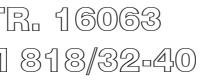


		COUNTY OF ORANGE OC PUBLIC WORKS OC SURVEY/FIELD SERVICES/BOUNDARY ANALYSIS & MAPPING			
		ANTONIO PARKWAY AND CROWN VALLEY PARKWAY ROADWAY IMPROVEMENT			
		BOUNDARY MAP			
		PROJECT LIMITS: CROWN VALLEY PARKWAY FROM SENNA PARKWAY TO 1ST DRIVEWAY			
		SOUTH OF CROWN VALLEY PARKWAY TO STATION WAY INTERSECTION			
		DATE OF SURVEY: 04/29/2022		BY: R. MACIAS AND CREW	
		MAPPING		BY: I. ISLAS	
		OFFICE CHECK		BY: J. MORENO, PLS	
		FIELD CHECK		BY: R. MACIAS AND CREW	
		SCALE: 1"=50'		W.O. #E019812S	
FILE #2122PW-PM002		FILE: ANTONIO PARKWAY_BOUNDARY_2022.DWG			
MARK	DATE	ITEM		SHEET NO.  5 of  11	
REVISIONS					

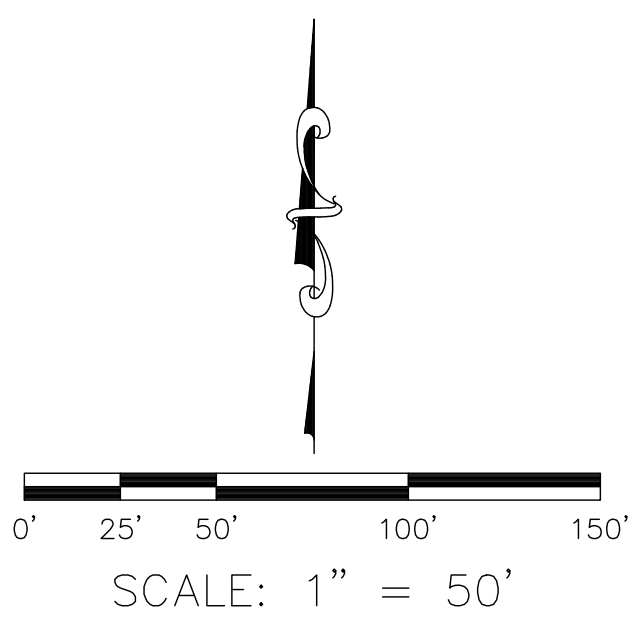




TR. 15884  
MM 794/33.44



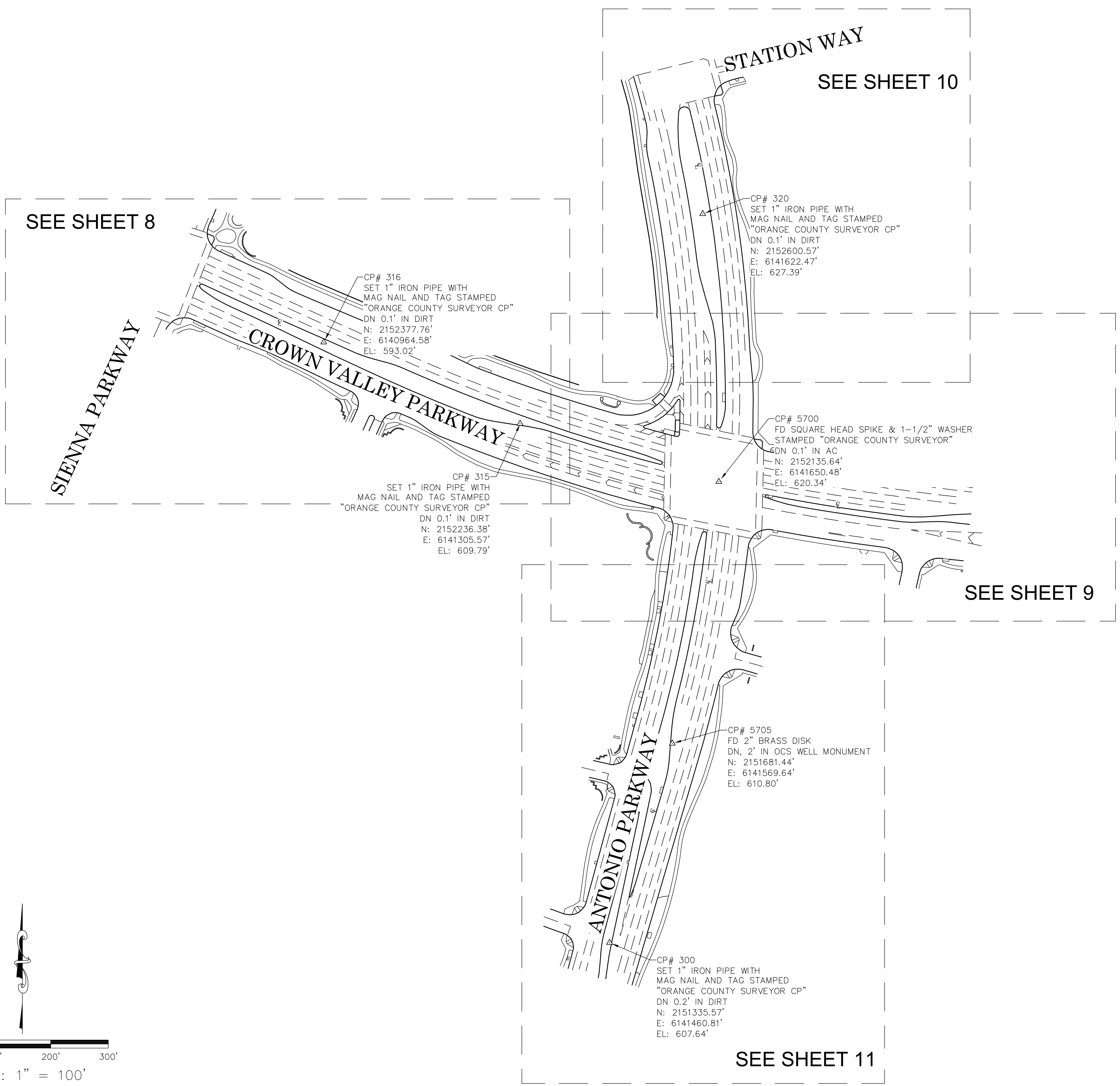
(R1) = TRACT NO. 15615, M.M. 777/14-31  
(R2) = TRACT NO. 15619, M.M. 814/3-6  
(R3) = TRACT NO. 16063, M.M. 818/32-40  
(R4) = TRACT NO. 15884, M.M. 794/33-44  
(R10) = CORNER RECORD, C.R. 2020-1643  
(R11) = CORNER RECORD, C.R. 2004-1656  
(R12) = CORNER RECORD, C.R. 2000-0617  
(R15) = PARCEL MAP NO. 2003-105, P.M.B. 337/1-10



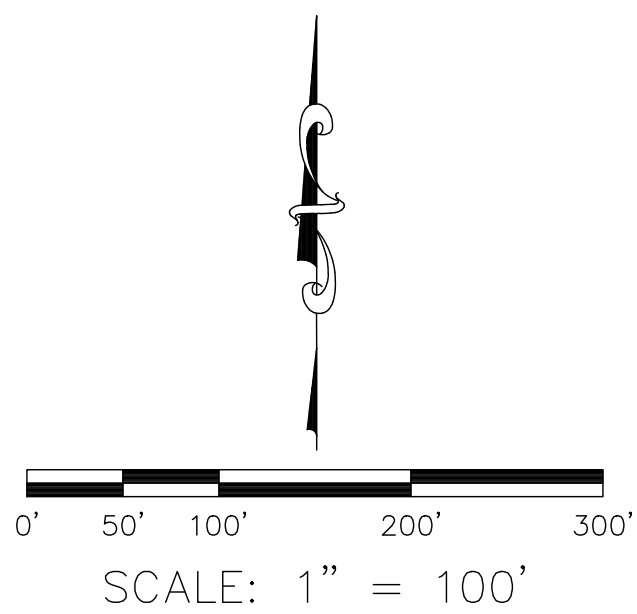
			COUNTY OF ORANGE OC PUBLIC WORKS OC SURVEY/FIELD SERVICES/BOUNDARY ANALYSIS & MAPPING		
			ANTONIO PARKWAY AND CROWN VALLEY PARKWAY ROADWAY IMPROVEMENT		
			BOUNDARY MAP		
			PROJECT LIMITS: CROWN VALLEY PARKWAY FROM SIENNA PARKWAY TO 1ST DRIVEWAY		
			SOUTH OF CROWN VALLEY PARKWAY TO STATION WAY INTERSECTION		
			DATE OF SURVEY: 04/29/2022	BY: R. MACIAS AND CREW	
			MAPPING	BY: J. ISLAS	
			OFFICE CHECK	BY: J. MORENO, PLS	
			FIELD CHECK	BY: R. MACIAS AND CREW	
MARK	DATE	ITEM			
REVISIONS			SCALE: 1"=50'	W.O. #E019812S	FILE #2122PW-PM002
			FILE: ANTONIO PARKWAY_BOUNDARY_2022.DWG		
			SHEET NO. 6 of 11		



# TOPOGRAPHIC MAP INDEX



**U.S. Survey Foot**  
OC Public Works  
OC Survey/Field Services  
Boundary Analysis & Mapping



			COUNTY OF ORANGE OC PUBLIC WORKS OC SURVEY/FIELD SERVICES/BOUNDARY ANALYSIS & MAPPING		
			ANTONIO PARKWAY AND CROWN VALLEY PARKWAY ROADWAY IMPROVEMENT		
			TOPOGRAPHIC MAP		
			PROJECT LIMITS: CROWN VALLEY PARKWAY FROM SIENNA PARKWAY TO 1ST DRIVEWAY EAST OF ANTONIO PARKWAY INTERSECTION; AND ANTONIO PARKWAY FROM 900' SOUTH OF CROWN VALLEY PARKWAY TO STATION WAY INTERSECTION		
			DATE OF SURVEY: 04/29/2022	BY: R. MACIAS AND CREW	SHEET NO.  7 of 11
			MAPPING	BY: A. VU	
			OFFICE CHECK	BY: J. MORENO, PLS	
			FIELD CHECK	BY: R. MACIAS AND CREW	
			SCALE: 1" = 100'	W.O. #E019812S FILE # 2122PW-PW002	
			FILE: ANTONIO PARKWAY_TOPO_2022.DWG		
MARK	DATE	ITEM	REVISIONS		



SYMBOL

Bush

Control Box Cable TV

Control Box Electrical

Control Box Telephone

Control Box Undefined

Control Point

Fire Hydrant

Flag Pole

Grate Inlet

Light Pole, Double

Light Pole, Single

Manhole Sewer

Manhole Storm Drain

Manhole Telephone

Manhole Undefined

Meter Electrical

Meter Undefined

Meter Water

Pedestrian Signal Pole

Pilaster

Post

Pull Box Cable TV

Pull Box Electrical

Pull Box Irrigation

Pull Box Telephone

Pull Box Traffic

Pull Box Undefined

Sign Board

Sign Post

Traffic Sensor

Traffic Signal

Traffic Signal w/ Light

Tree

Utility Warning Sign

Valve Gas

Valve Irrigation

Valve Water

Valve Undefined

Vault Cable TV

Vault Electrical

Vault Gas

Vault Undefined

Vent Pipe

Water Line Appurtenance-Air Release

Water Line Appurtenance-Cathodic Test

Water Line Appurtenance-Pressure Release

Water Line Appurtenance-Undefined

Yard Light

LINE PATTERN KEY

Block Wall

Bush Row Outline

Centerline

Concrete Wall

Edge of Concrete

Edge of Asphalt Pavement

Flowline

Hand Rail

Right of Way

Stone Wall

Striping

ABBREVIATION

AC

Asphalt Concrete

CB

Catch Basin

CP

Control Point

DN

Down

FD

Found

AREA PATTERN KEY

Concrete

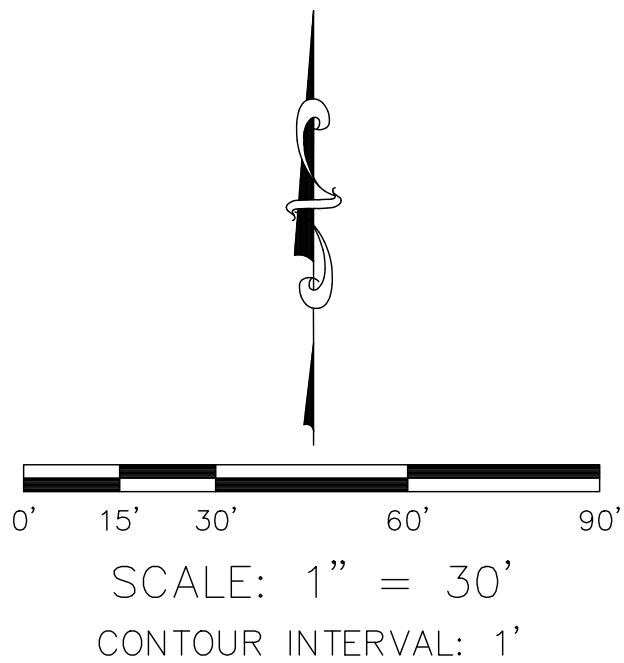
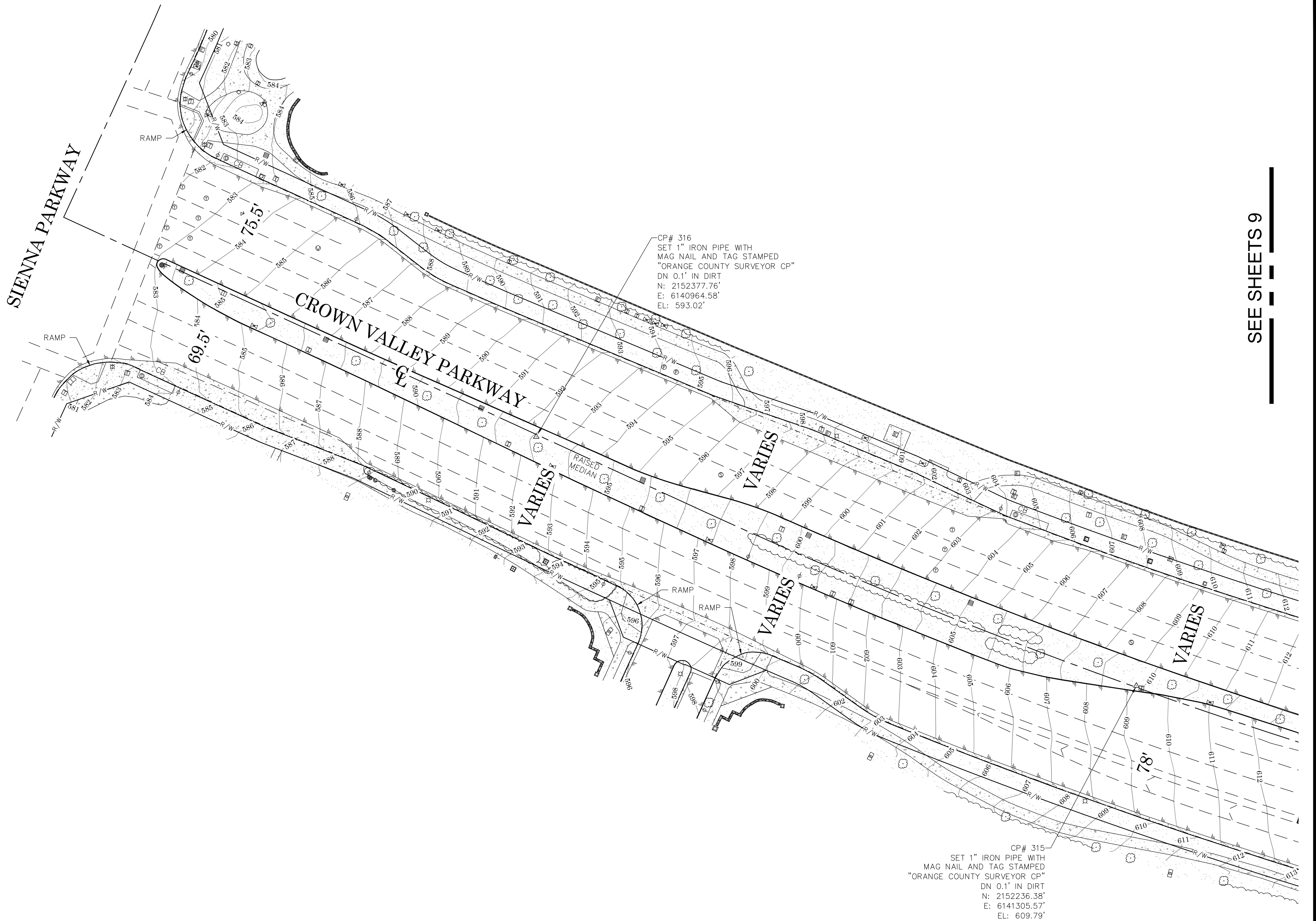
Detectable

Warning Surface

Dirt

Grass

Stone



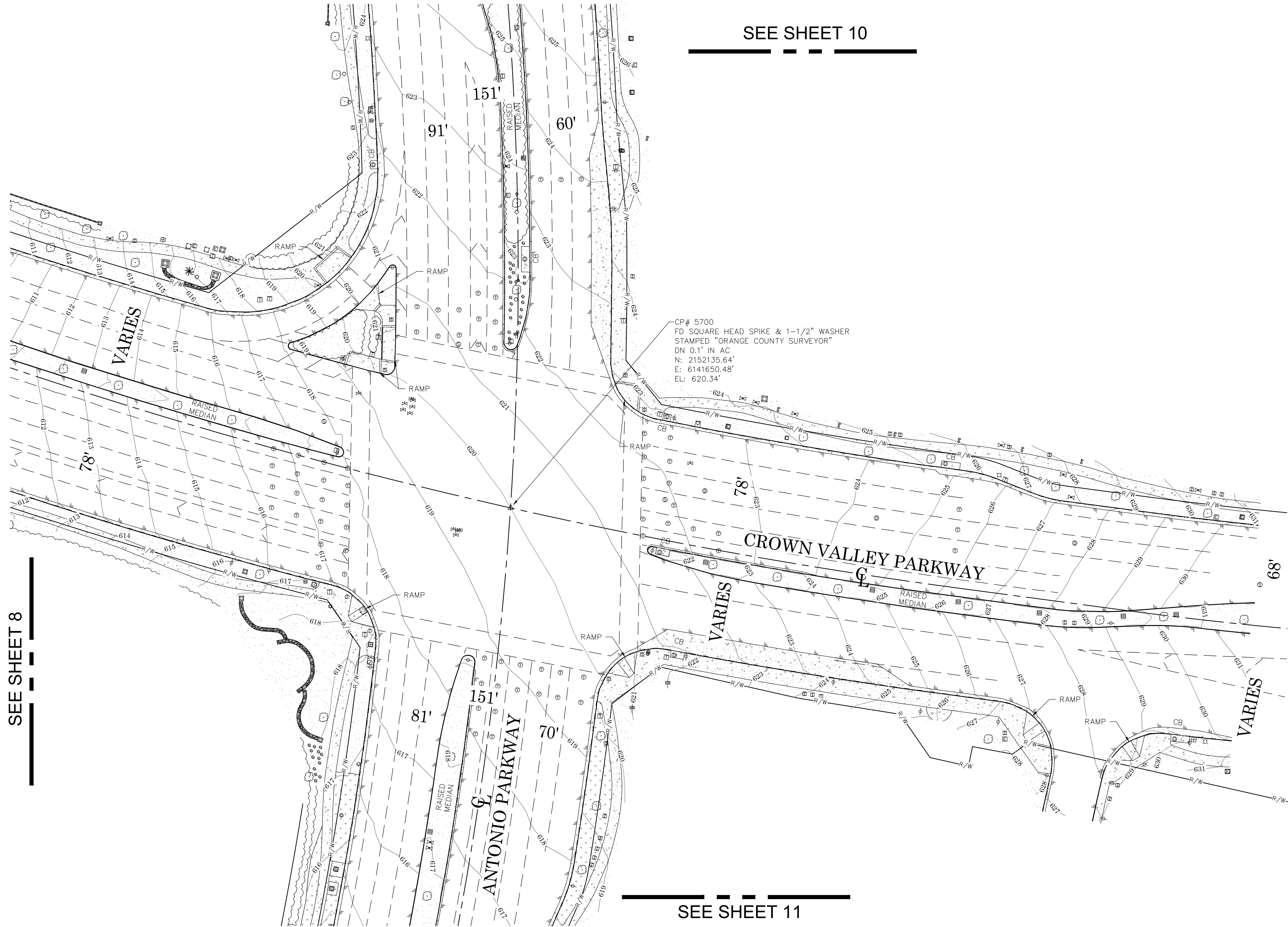
**U.S. Survey**  
*Foot*

OC Public Works  
OC Survey/Field Services  
Boundary Analysis & Mapping

			COUNTY OF ORANGE OC PUBLIC WORKS OC SURVEY/FIELD SERVICES/BOUNDARY ANALYSIS & MAPPING	
			ANTONIO PARKWAY AND CROWN VALLEY PARKWAY ROADWAY IMPROVEMENT	
			TOPOGRAPHIC MAP	
			PROJECT LIMITS: CROWN VALLEY PARKWAY FROM SIENNA PARKWAY TO 1ST DRIVEWAY EAST OF ANTONIO PARKWAY INTERSECTION; AND ANTONIO PARKWAY FROM 900' SOUTH OF CROWN VALLEY PARKWAY TO STATION WAY INTERSECTION	
DATE OF SURVEY: 04/29/2022		BY: R. MACIAS AND CREW	SHEET NO. <b>8</b> of <b>11</b>	
MAPPING		BY: A. VU		
OFFICE CHECK		BY: J. MORENO, PLS		
FIELD CHECK		BY: R. MACIAS AND CREW		
SCALE: 1" = 30'		W.O. #E0198125	FILE #2122PW-PW002	
REVISIONS			FILE: ANTONIO PARKWAY_TOPO_2022.DWG	

SEE SHEETS 9

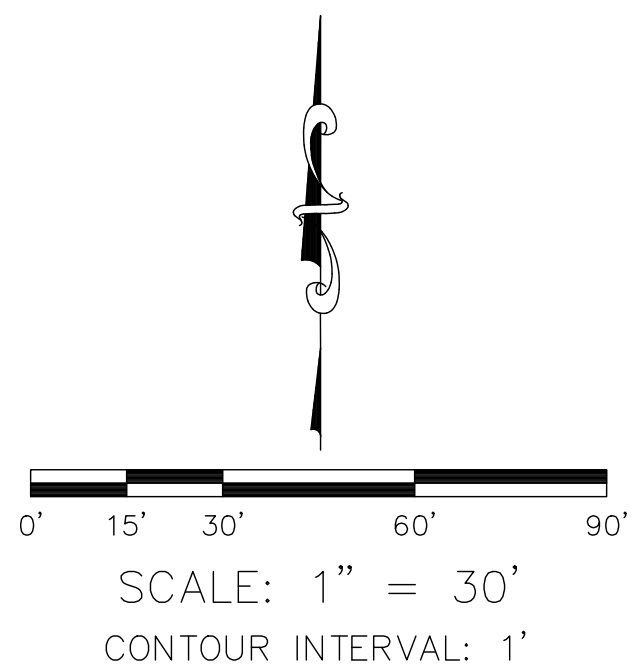




SEE SHEET 8

SEE SHEET 10

SEE SHEET 11



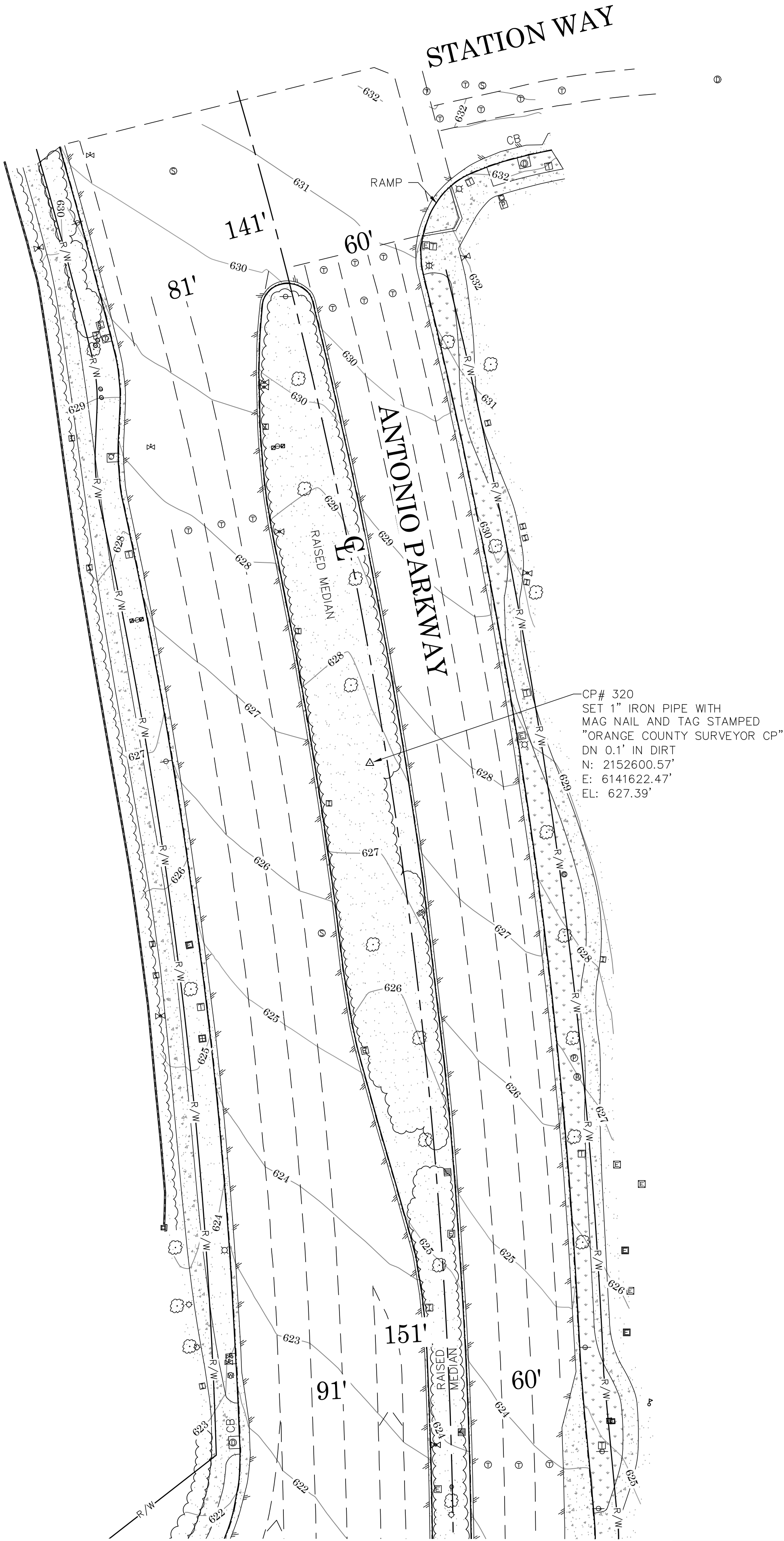
**U.S. Survey**  
*Foot*  
OC Public Works  
OC Survey/Field Services  
Boundary Analysis & Mapping

## LEGEND

SYMBOL		LINE PATTERN KEY	
	Bush		Block Wall
	Control Box Cable TV		Bush Row Outline
	Control Box Electrical		Centerline
	Control Box Telephone		Concrete Wall
	Control Box Undefined		Edge of Concrete
	Control Point		Edge of Asphalt Pavement
	Fire Hydrant		Flowline
	Flag Pole		Hand Rail
	Grate Inlet		Right of Way
	Light Pole, Double		Stone Wall
	Light Pole, Single		Striping
	Manhole Sewer		
	Manhole Storm Drain		
	Manhole Telephone		
	Manhole Undefined		
	Meter Electrical		
	Meter Undefined		
	Meter Water		
	Pedestrian Signal Pole		
	Pilaster		
	Post		
	Pull Box Cable TV		
	Pull Box Electrical		
	Pull Box Irrigation		
	Pull Box Telephone		
	Pull Box Traffic		
	Pull Box Undefined		
	Sign Board		
	Sign Post		
	Traffic Sensor		
	Traffic Signal		
	Traffic Signal w/ Light		
	Tree		
	Utility Warning Sign		
	Valve Gas		
	Valve Irrigation		
	Valve Water		
	Valve Undefined		
	Vault Cable TV		
	Vault Electrical		
	Vault Gas		
	Vault Undefined		
	Vent Pipe		
	Water Line Appurtenance-Air Release		
	Water Line Appurtenance-Cathodic Test		
	Water Line Appurtenance-Pressure Release		
	Water Line Appurtenance-Undefined		
	Yard Light		
ABBREVIATION		AREA PATTERN KEY	
AC	Asphalt Concrete		Concrete
CB	Catch Basin		Detectable
CP	Control Point		Warning Surface
DN	Down		Dirt
FD	Found		Grass
			Stone

			COUNTY OF ORANGE OC PUBLIC WORKS OC SURVEY/FIELD SERVICES/BOUNDARY ANALYSIS & MAPPING			
			ANTONIO PARKWAY AND CROWN VALLEY PARKWAY ROADWAY IMPROVEMENT			
			TOPOGRAPHIC MAP			
			PROJECT LIMITS: CROWN VALLEY PARKWAY FROM SIENNA PARKWAY TO 1ST DRIVEWAY EAST OF ANTONIO PARKWAY INTERSECTION; AND ANTONIO PARKWAY FROM 900' SOUTH OF CROWN VALLEY PARKWAY TO STATION WAY INTERSECTION			
			DATE OF SURVEY: 04/29/2022		BY: R. MACIAS AND CREW	SHEET NO.  9 of  11
			MAPPING		BY: A. VU	
			OFFICE CHECK		BY: J. MORENO, PLS	
			FIELD CHECK		BY: R. MACIAS AND CREW	
			SCALE: 1" = 30'		FILE #2122PW-PW002	
MARK	DATE	ITEM	FILE: ANTONIO PARKWAY_TOPO_2022.DWG			
REVISIONS						





SEE SHEET 9

### LEGEND

**SYMBOL**

- Bush
- Control Box Cable TV
- Control Box Electrical
- Control Box Telephone
- Control Box Undefined
- Control Point
- Fire Hydrant
- Flag Pole
- Grate Inlet
- Light Pole, Double
- Light Pole, Single
- Manhole Sewer
- Manhole Storm Drain
- Manhole Telephone
- Manhole Undefined
- Meter Electrical
- Meter Undefined
- Meter Water
- Pedestrian Signal Pole
- Pilaster
- Post
- Pull Box Cable TV
- Pull Box Electrical
- Pull Box Irrigation
- Pull Box Telephone
- Pull Box Traffic
- Pull Box Undefined
- Sign Board
- Sign Post
- Traffic Sensor
- Traffic Signal
- Traffic Signal w/ Light
- Tree
- Utility Warning Sign
- Valve Gas
- Valve Irrigation
- Valve Water
- Valve Undefined
- Vault Cable TV
- Vault Electrical
- Vault Gas
- Vault Undefined
- Vent Pipe
- Water Line Appurtenance-Air Release
- Water Line Appurtenance-Cathodic Test
- Water Line Appurtenance-Pressure Release
- Water Line Appurtenance-Undefined
- Yard Light

**LINE PATTERN KEY**

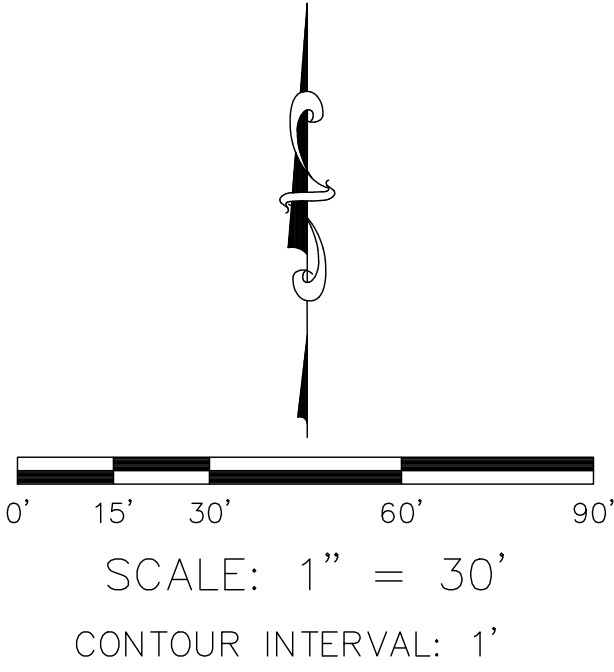
- Block Wall
- Bush Row Outline
- Centerline
- Concrete Wall
- Edge of Concrete
- Edge of Asphalt
- Pavement
- Flowline
- Hand Rail
- Right of Way
- Stone Wall
- Striping

**ABBREVIATION**

- AC Asphalt Concrete
- CB Catch Basin
- CP Control Point
- DN Down
- FD Found

**AREA PATTERN KEY**

- Concrete
- Detectable
- Warning Surface
- Dirt
- Grass
- Stone



**U.S. Survey**  
**Foot**

COUNTY OF ORANGE

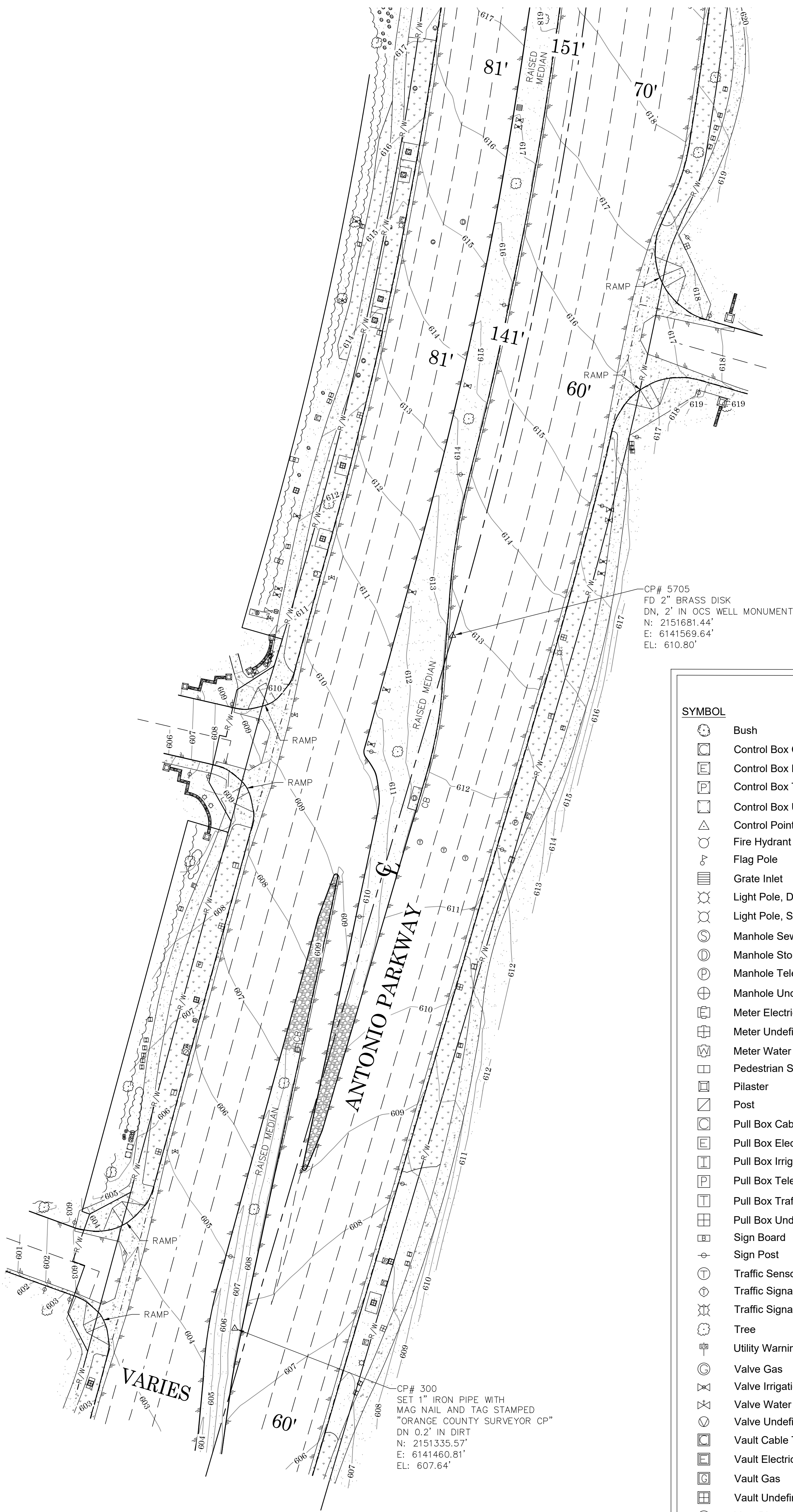
OC PUBLIC WORKS

OC Survey/Field Services

Boundary Analysis & Mapping

			COUNTY OF ORANGE OC PUBLIC WORKS OC SURVEY/FIELD SERVICES/BOUNDARY ANALYSIS & MAPPING				
			ANTONIO PARKWAY AND CROWN VALLEY PARKWAY ROADWAY IMPROVEMENT				
			TOPOGRAPHIC MAP				
			PROJECT LIMITS: CROWN VALLEY PARKWAY FROM SIENNA PARKWAY TO 1ST DRIVEWAY EAST OF ANTONIO PARKWAY INTERSECTION; AND ANTONIO PARKWAY FROM 900' SOUTH OF CROWN VALLEY PARKWAY TO STATION WAY INTERSECTION				
MARK	DATE	ITEM	DATE OF SURVEY: 04/29/2022		BY: R. MACIAS AND CREW		SHEET NO.  10 of 11
			MAPPING		BY: A. VU		
			OFFICE CHECK		BY: J. MORENO, PLS		
			FIELD CHECK		BY: R. MACIAS AND CREW		
			SCALE: 1" = 30'      W.O. #E0198125		FILE # 2122PW-PM002		
		REVISIONS		FILE: ANTONIO PARKWAY_TOPO_2022.DWG			





CP# 5705  
FD 2" BRASS DISK  
DN, 2" IN OCS WELL MONUMENT  
N: 2151681.44'  
E: 6141569.64'  
EL: 610.60'

ANTONIO PARKWAY

VARIES

CP# 300  
SET 1" IRON PIPE WITH  
MAG NAIL AND TAG STAMPED  
"ORANGE COUNTY SURVEYOR CP"  
DN 0.2' IN DIRT  
N: 2151335.57'  
E: 6141460.81'  
EL: 607.64'

## LEGEND

SYMBOL	
	Bush
	Control Box Cable TV
	Control Box Electrical
	Control Box Telephone
	Control Box Undefined
	Control Point
	Fire Hydrant
	Flag Pole
	Grate Inlet
	Light Pole, Double
	Light Pole, Single
	Manhole Sewer
	Manhole Storm Drain
	Manhole Telephone
	Manhole Undefined
	Meter Electrical
	Meter Undefined
	Meter Water
	Pedestrian Signal Pole
	Pilaster
	Post
	Pull Box Cable TV
	Pull Box Electrical
	Pull Box Irrigation
	Pull Box Telephone
	Pull Box Traffic
	Pull Box Undefined
	Sign Board
	Sign Post
	Traffic Sensor
	Traffic Signal
	Traffic Signal w/ Light
	Tree
	Utility Warning Sign
	Valve Gas
	Valve Irrigation
	Valve Water
	Valve Undefined
	Vault Cable TV
	Vault Electrical
	Vault Gas
	Vault Undefined
	Vent Pipe
	Water Line Appurtenance-Air Release
	Water Line Appurtenance-Cathodic Test
	Water Line Appurtenance-Pressure Release
	Water Line Appurtenance-Undefined
	Yard Light

### LINE PATTERN KEY

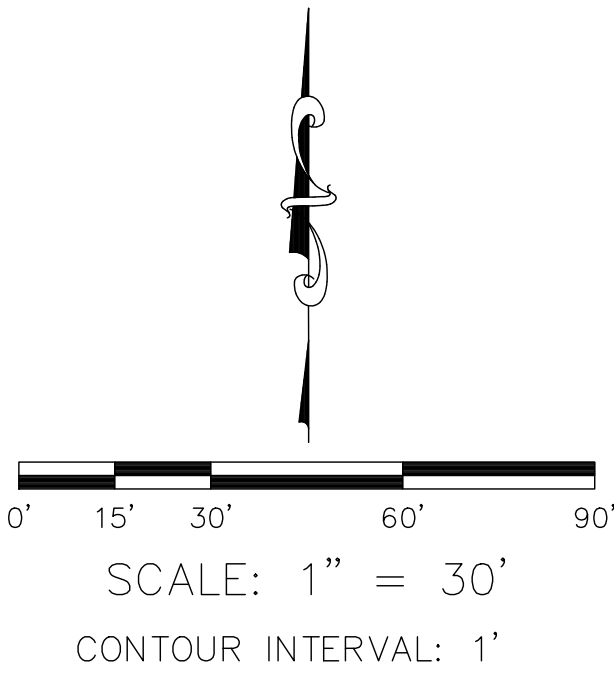
	Block Wall
	Bush Row Outline
	Centerline
	Concrete Wall
	Edge of Concrete
	Edge of Asphalt Pavement
	Flowline
	Hand Rail
	Right of Way
	Stone Wall
	Striping

### ABBREVIATION

AC	Asphalt Concrete
CB	Catch Basin
CP	Control Point
DN	Down
FD	Found

### AREA PATTERN KEY

	Concrete
	Detectable
	Warning Surface
	Dirt
	Grass
	Stone



**U.S. Survey**  
*Foot*

OC Public Works  
OC Survey/Field Services  
Boundary Analysis & Mapping

			COUNTY OF ORANGE OC PUBLIC WORKS OC SURVEY/FIELD SERVICES/BOUNDARY ANALYSIS & MAPPING	
			ANTONIO PARKWAY AND CROWN VALLEY PARKWAY ROADWAY IMPROVEMENT	
			TOPOGRAPHIC MAP	
			PROJECT LIMITS: CROWN VALLEY PARKWAY FROM SIENNA PARKWAY TO 1ST DRIVEWAY EAST OF ANTONIO PARKWAY INTERSECTION; AND ANTONIO PARKWAY FROM 900' SOUTH OF CROWN VALLEY PARKWAY TO STATION WAY INTERSECTION	
			DATE OF SURVEY: 04/29/2022	BY: R. MACIAS AND CREW
			MAPPING	BY: A. VU
			OFFICE CHECK	BY: J. MORENO, PLS
			FIELD CHECK	BY: R. MACIAS AND CREW
			SCALE: 1" = 30'	W.O. #EQ198125
			FILE #2122PW-PM002	
			FILE: ANTONIO PARKWAY_TOPO_2022.DWG	
MARK	DATE	ITEM		
REVISIONS				