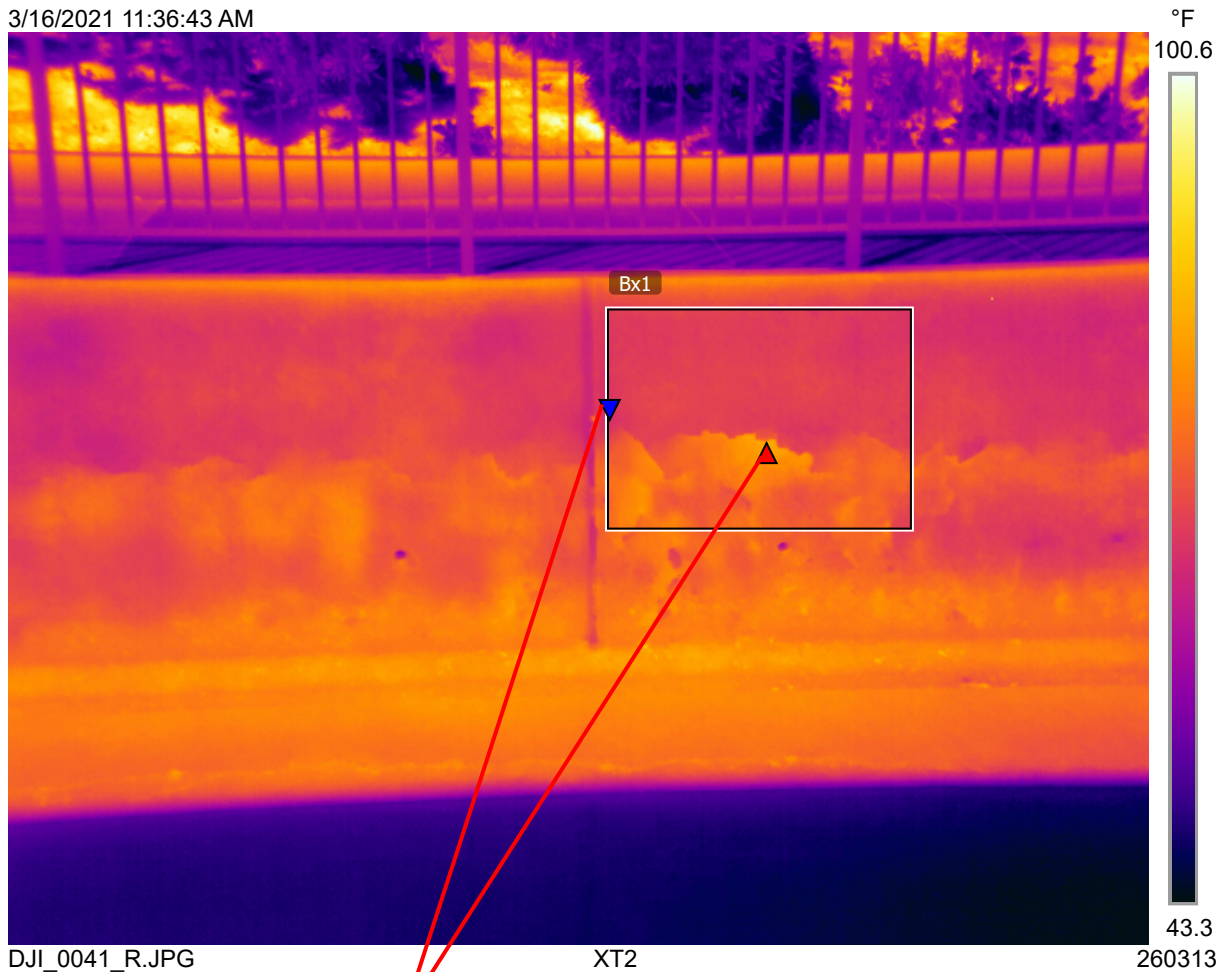


3/16/2021 11:36:43 AM



### Measurements

Bx1	Max	85.8 °F
	Min	68.8 °F
	Average	73.9 °F

### Parameters

Emissivity	0.95
Refl. temp.	68 °F

### Geolocation

Location	N 33° 27' 40.40", W 117° 41' 55.59"
<a href="http://maps.google.com?z=17&amp;t=k&amp;q=33.4612,-117.6988">http://maps.google.com?z=17&amp;t=k&amp;q=33.4612,-117.6988</a>	

### Note

DCIM/100MEDIA/DJI\_0041\_R.JPG

Thermal image of Island Way Bridge north east quay wall. The image was collected using a DJI Matrice 210 with a FLIR XT2 camera. The temperatures recorded are apparent temperatures only not precise temperatures.

The image illustrates the possible delamination hot spots of the face of the quay wall indicated by the difference in temperature. The warmer temperature indicates the heat flux within the concrete.