

Designation: TRABUCO

Date Destroyed:

Date Revised: 4/9/2014

GPS #:

OCS Index Map: Q12-08

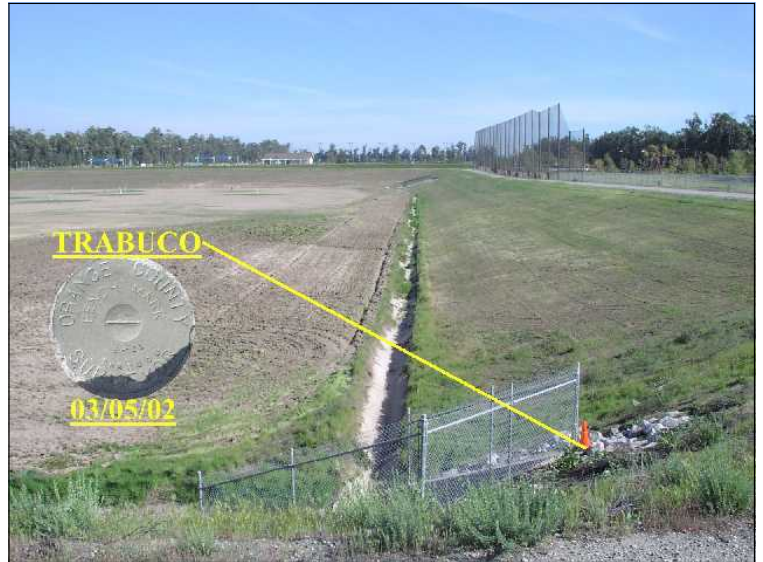
Page/Grid: 860/J-2

City / Location: Unin., Orange Co.

Line #/SSN: 303/0060

Established By: OCS 2001

Monument Type: Orange County Surveyor's 3 3/4"
Aluminum Disk



NAVD88 (ft)	NGVD29 (ft)	Year Leveled
191.936	189.542	2014
192.061	189.667	2002

For Reconnaissance Only!	
Latitude (30' +/-)	Longitude (30' +/-)
33 41 48.39	117 45 38.83

Description:

DESCRIBED BY OCS 2002 - FOUND 3 3/4" OCS ALUMINUM BENCHMARK DISK STAMPED "TRABUCO", SET IN THE SOUTH END OF A CONCRETE HEADWALL. MONUMENT IS LOCATED IN THE WESTERLY CORNER OF THE NORTHWOOD GOLF DRIVING RANGE, FROM TRABUCO ROAD AND JEFFREY ROAD PROCEED 0.35 MILES SOUTHEASTERLY ALONG TRABUCO TO THE GOLF COURSE ENTRANCE, THEN NORTHEASTERLY 250 FT. TO A GATE ON THE WEST SIDE OF THE DRIVEWAY, PROCEED ALONG LEVEE ROAD TO A CONCRETE SPILLWAY IN THE WESTERLY CORNER OF THE BASIN, 75 FT. EASTERLY OF THE LEVEE ROAD. MONUMENT IS SET DOWN 10 FT. FROM LEVEE ROAD.

