

GPS #: 3110

Date Destroyed:

Date Revised:

Benchmark Designation:

OCS Index Map: 2L

Page/Grid: 799/F-3

City / Location: Orange

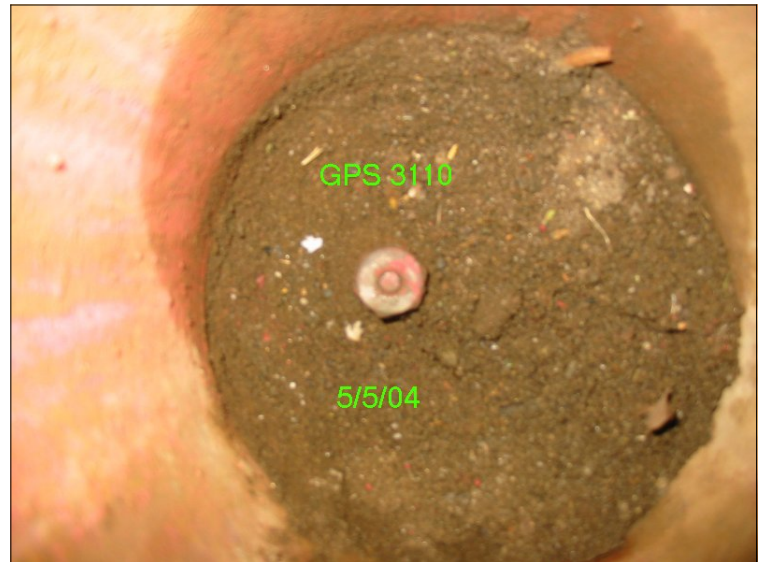
Scale Factor: 0.99998645

Ellipsoid Red. Factor: 0.99999751

Combination Factor: 0.99998396

Convergence Angle: -00 53 08.59620

Factors and Convergence Angle based on the 1991.35 Epoch Adjustment positions.



Epoch Adjustment	Latitude	Longitude	Northing (ft)	Easting (ft)	Ellipsoid Height (ft)
1991.35	33 47 42.52279	117 51 42.53723	2236740.458	6071983.266	52.149
2007.00	33 47 42.53901	117 51 42.55396	2236742.12	6071981.88	

References: MM 437/7-8, RSB 149/10-20

Description:

FD HEX BAR WITH NAIL AND TAG STAMPED "RCE 16556" DOWN 1.5' IN O.C.S. WELL MONUMENT. STATION IS LOCATED AT CENTERLINE INTER OF BATAVIA ST. AND WALNUT AVE.

