

GPS #: 0561

Date Destroyed:

Date Revised: 5/6/2003

Benchmark Designation:

OCS Index Map: 2L

Page/Grid: 768/J-5

City / Location: Anaheim

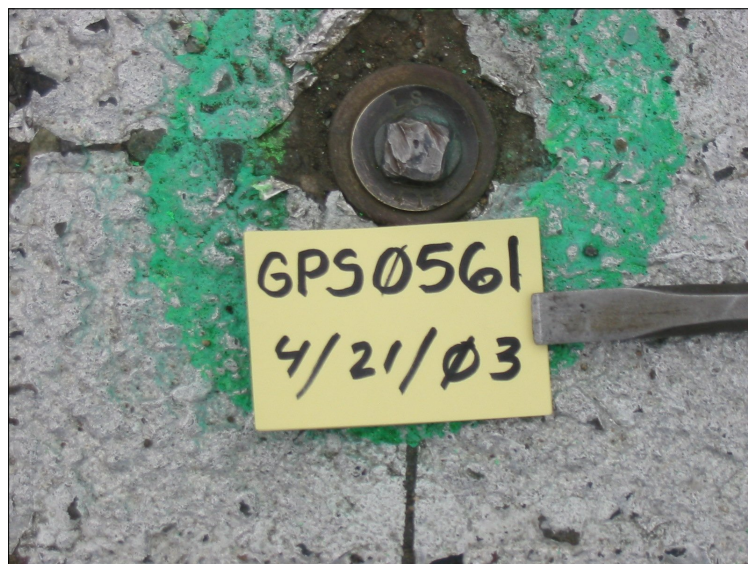
Scale Factor: 0.99999208

Ellipsoid Red. Factor: 0.99999817

Combination Factor: 0.99999025

Convergence Angle: -00 54 57.05696

Factors and Convergence Angle based on the 1991.35 Epoch Adjustment positions.



Epoch Adjustment	Latitude	Longitude	Northing (ft)	Easting (ft)	Ellipsoid Height (ft)
1991.35	33 50 01.17494	117 54 59.90082	2251016.059	6055552.923	38.218
2007.00	33 50 01.19124	117 54 59.91812	2251017.73	6055551.49	

References: CR 2003-1001

Description:

FOUND SPIKE AND WASHER STAMPED "LS 4189", FLUSH IN AC. MONUMENT IS LOCATED IN THE INTERSECTION OF CENTER ST. AND S. CLEMENTINE ST.

