

GPS #: 0393R1

Date Destroyed:

Date Revised: 12/6/2000

Benchmark Designation:

OCS Index Map: 1L

Page/Grid: 769/A-5

City / Location: Anaheim

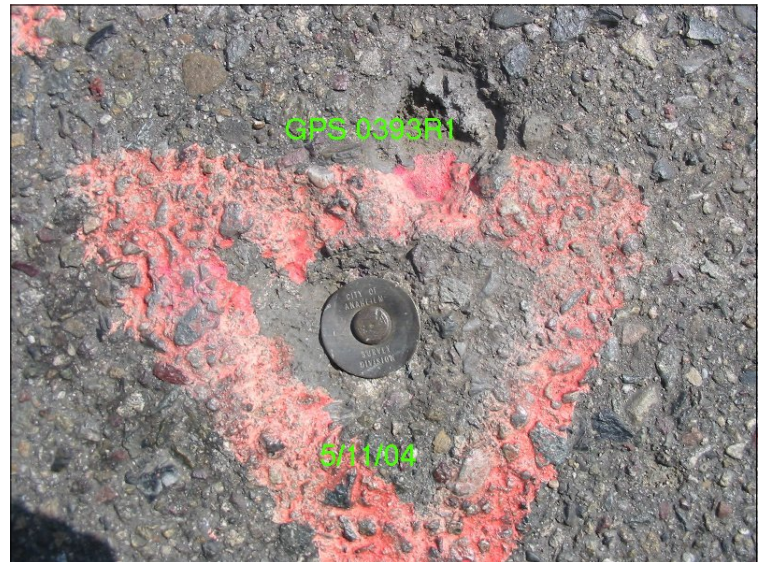
Scale Factor: 0.99999197

Ellipsoid Red. Factor: 0.99999751

Combination Factor: 0.99998949

Convergence Angle: -00 54 32.81662

Factors and Convergence Angle based on the 1991.35 Epoch Adjustment positions.



Epoch Adjustment	Latitude	Longitude	Northing (ft)	Easting (ft)	Ellipsoid Height (ft)
1991.35	33 49 58.72819	117 54 15.79971	2250709.514	6059268.777	
2007.00	33 49 58.74433	117 54 15.81705	2250711.17	6059267.34	

References: CETB 47, PAGE 30, RSB 149/1-9, CR 2000-0251

Description:

FD SPIKE WITH CITY OF ANAHEIM TAG IN LIEU OF ORIGINAL PUNCHED CUT SPIKE AND CITY OF ANAHEIM SURVEY DIVISION BRASS WASHER, FLUSH WITH A.C. MONUMENT WAS RESET PER CR # 2000-0251 AND IS LOCATED AT THE CENTERLINE INTER OF SANTA ANA ST. AND VINE ST.

