



# OC PUBLIC WORKS DEPARTMENT

## JAMES TREADAWAY, DIRECTOR OF PUBLIC WORKS

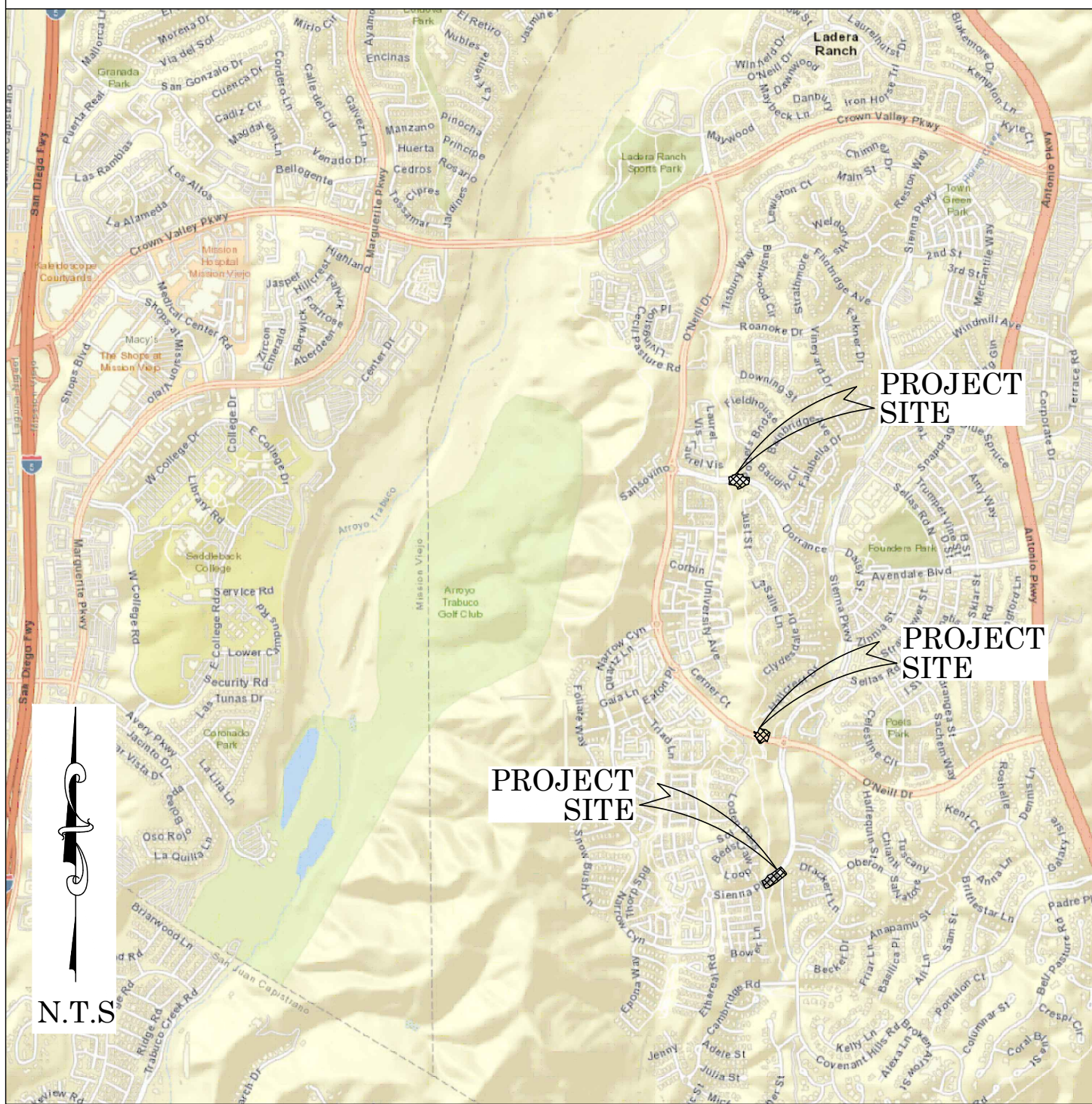
### KEVIN HILLS, COUNTY SURVEYOR

## YUKON BOTANICA TRAIL



### RAMP CROSSING UPGRADES

#### LOCATION MAP



FOUND CGPS "P471"  
N: 2150595.47  
E: 6168438.89  
THIS IS A CONTINUOUS GPS STATION (CGPS) AND IS PART OF THE CALIFORNIA SPATIAL REFERENCE NETWORK (CSRN). FROM WHICH DATA CAN BE DOWNLOADED HERE: [HTTP://SOPACC SRC.UCSD.EDU/](http://sopaccsrc.ucsd.edu/).

FOUND CGPS "SBCC"  
N: 2147751.75  
E: 6131651.74  
THIS IS A CONTINUOUS GPS STATION (CGPS) AND IS PART OF THE CALIFORNIA SPATIAL REFERENCE NETWORK (CSRN). FROM WHICH DATA CAN BE DOWNLOADED HERE: [HTTP://SOPACC SRC.UCSD.EDU/](http://sopaccsrc.ucsd.edu/).

#### BASIS OF BEARINGS

THE BASIS OF BEARINGS FOR THIS SURVEY IS BASED ON THE CALIFORNIA COORDINATE SYSTEM (CCS83), ZONE VI, NAD 83, OCS (2017.50) EPOCH ADJUSTMENT, AS DETERMINED LOCALLY BY A LINE BETWEEN CONTINUOUS GLOBAL POSITIONING STATIONS CGPS STATIONS (P471) AND (SBCC) BEING NORTH 85°34'47" EAST AS DERIVED FROM THE COORDINATES PUBLISHED BY THE CALIFORNIA SPATIAL REFERENCE CENTER (CSRC) ALONG WITH DATA SHEETS ON FILE IN THE OFFICE OF THE ORANGE COUNTY SURVEYOR.

#### HORIZONTAL DATUM

COORDINATES SHOWN ARE BASED ON THE CALIFORNIA COORDINATE SYSTEM (CCS83), ZONE VI, NAD 83, OCS (2017.50) EPOCH ADJUSTMENT.  
ALL DISTANCES SHOWN ARE GRID, UNLESS OTHERWISE NOTED. TO OBTAIN GROUND DISTANCES MULTIPLY GRID BY A COMBINED FACTOR OF 1.00005449.  
THIS COMBINATION FACTOR WAS HELD AT: CP# 3718  
N: 2144867.72' E: 6137545.40' EL: 430.25'  
ALL DISTANCES ARE BASED ON THE U.S. SURVEY FOOT.

#### VERTICAL DATUM

O.C.S. BM. AP-04-99 ELEV. = 576.001' YEAR LEVELED: 2004  
NAVD 1988 (O.C.S. 1995 ADJUSTMENT)  
DESCRIPTION: FOUND 3 3/4" OCS ALUMINUM BENCHMARK DISK STAMPED "AP-04-99" SET IN THE TOP OF A 6 IN. BY 6 IN. CONCRETE POST. MONUMENT IS LOCATED EAST OF THE INTERSECTION OF ANTONIO PARKWAY AND COVENANT HILLS, 15 FT. EAST OF THE EAST EDGE OF SIDEWALK, 26 FT. SOUTHEAST OF THE NORTHERLY TRAFFIC SIGNAL POLE, 2 FT. EAST OF A CONCRETE "V" DITCH, WITNESSED BY 2 ORANGE CARSONITE WITNESS POSTS. MONUMENT IS SET 0.5 POST. BELOW TOP OF THE V-DITCH.

#### NOTES

THE SURVEY INFORMATION SHOWN HEREON IS TO BE USED FOR TOPOGRAPHIC RELATIONSHIPS ONLY AND IS NOT INTENDED FOR LAND ACQUISITION OR BOUNDARY PURPOSES.

#### SHEET INDEX

| SHEET  | NO. | DESCRIPTION              |
|--------|-----|--------------------------|
| SHEET  | 1   | TITLE SHEET              |
| SHEET  | 2-5 | CENTERLINE ESTABLISHMENT |
| SHEETS | 6-8 | TOPOGRAPHIC MAP          |

#### PURPOSE OF SURVEY

THE PURPOSE OF THE SURVEY IS TO PROVIDE A TOPOGRAPHIC MAP AND RIGHT OF WAY ESTABLISHMENT FOR THE INTERSECTIONS ALONG THE YUKON BOTANICA TRAILS AT DORRANCE DR, O'NEILL DR, AND SIENNA PKWY.



#### SENIOR LAND SURVEYOR'S CERTIFICATE:

THIS MAP CORRECTLY REPRESENTS A SURVEY MADE BY ME OR UNDER MY DIRECTION IN CONFORMANCE WITH REQUIREMENTS OF THE PROFESSIONAL LAND SURVEYOR'S ACT; THIS 18 DAY OF FEBRUARY, 2022.

ELLIOTT MEDINA, PLS. SENIOR LAND SURVEYOR



#### DEPUTY COUNTY SURVEYOR'S STATEMENT:

THIS MAP HAS BEEN EXAMINED IN ACCORDANCE WITH THE PROFESSIONAL LAND SURVEYOR'S ACT; THIS 18 DAY OF FEBRUARY, 2022.

WADE WEAVER, PLS. DEPUTY COUNTY SURVEYOR



**U.S. Survey Foot**

OC Public Works  
OC Survey/Field Services  
Boundary Analysis & Mapping

## TOPOGRAPHIC MAPPING PROJECT

|      |      |      |  |  |                       |                      |
|------|------|------|--|--|-----------------------|----------------------|
|      |      |      | COUNTY OF ORANGE<br>OC PUBLIC WORKS<br>OC SURVEY/FIELD SERVICES/BOUNDARY ANALYSIS & MAPPING              |  |                       |                      |
|      |      |      | YUKON BOTANICA TRAIL<br>RAMP CROSSING UPGRADES   |  |                       |                      |
|      |      |      | TITLE SHEET  |  |                       |                      |
|      |      |      | PROJECT LIMITS: INTERSECTIONS ALONG YUKON BOTANICA TRAILS AT DORRANCE DR,<br>O'NEILL DR, AND SIENNA PKWY |  |                       |                      |
|      |      |      | DATE OF SURVEY: 01/24/2022   |  | BY: P. MAGUIRE & CREW |                      |
|      |      |      | MAPPING  |  | BY: I. ISLAS          |                      |
|      |      |      | OFFICE CHECK   |  | BY: E. MEDINA, PLS    |                      |
|      |      |      | FIELD CHECK  |  | BY: P. MAGUIRE & CREW |                      |
|      |      |      | SCALE: N.T.S.  |  | W.O. #E03088          | FILE #2122PW--1F0001 |
|      |      |      | FILE: YUKON_TRAIL_TOPO_2022.DWG  |  |                       |                      |
| MARK | DATE | ITEM | REVISIONS  |  |                       |                      |
|      |      |      |  |  |                       |                      |



NOTES

ALL BOUNDARY LINES NOT SHOWN IN BOLD ARE FOR GRAPHICAL REPRESENTATION ONLY.

RECORD DISTANCES SHOWN HEREON ARE AS THEY APPEAR ON THE DOCUMENT OF RECORD. DISTANCES MAY BE EITHER GRID OR GROUND, AS PER SAID RECORD.

REFERENCE DOCUMENTS IN THE REFERENCE LEGEND ARE LIVE HYPERLINKS TO SAID DOCUMENT.

MONUMENT SYMBOLS CONTAIN LIVE HYPERLINKS TO IMAGES, IF THEY EXIST, OF RESPECTIVE MONUMENT.

A FULL BOUNDARY SURVEY WAS NOT PERFORMED, BOUNDARY SHOWN HEREON IS LIMITED BASED ON SCOPE OF PROJECT. FURTHER INVESTIGATION AND ANALYSIS REQUIRED FOR AREAS BEYOND THIS SCOPE.

BASIS OF BEARINGS

THE BASIS OF BEARINGS FOR THIS SURVEY IS BASED ON THE CALIFORNIA COORDINATE SYSTEM (CCS83), ZONE VI, NAD 83, OCS (2017.50) EPOCH ADJUSTMENT, AS DETERMINED LOCALLY BY A LINE BETWEEN CONTINUOUS GLOBAL POSITIONING STATIONS CGPS STATIONS (P471) AND (SBCC) BEING NORTH 85°34'47" EAST AS DERIVED FROM THE COORDINATES PUBLISHED BY THE CALIFORNIA SPATIAL REFERENCE CENTER (CSRC) ALONG WITH DATA SHEETS ON FILE IN THE OFFICE OF THE ORANGE COUNTY SURVEYOR.

MONUMENT NOTES

- 1

FOUND 2 INCH IRON PIPE--CONCRETE PLUG & 3/4 INCH TAG STAMPED "PLS 5557", PER (R1), FLUSH WITH DIRT, ACCEPTED AS A POINT ON CENTERLINE OF DORRANCE DRIVE.
- 2

FOUND 2 INCH IRON PIPE--CONCRETE PLUG & 3/4 INCH TAG STAMPED "PLS 5557", PER (R1), FLUSH WITH DIRT, ACCEPTED AS CENTERLINE EC OF DORRANCE DRIVE.
- 3

FOUND 2 INCH IRON PIPE & 3/4 INCH TAG STAMPED "PLS 5557", PER (R1), FLUSH WITH DIRT, ACCEPTED AS A POINT ON CENTERLINE OF DORRANCE DRIVE.
- 4

FOUND LEAD--BRASS NAIL & 3/4 INCH TAG STAMPED 'TIE PT PLS 5557' ON TOP OF CURB, ACCEPTED AS A TIE PER (R5)
- 5

FOUND LEAD--BRASS NAIL & 3/4 INCH TAG STAMPED 'TIE PT PLS 5557' ON TOP OF CURB, ACCEPTED AS A TIE PER (R5)
- 6

FOUND LEAD--BRASS NAIL & 3/4 INCH TAG STAMPED 'TIE PT PLS 5557' ON TOP OF CURB, ACCEPTED AS A TIE PER (R5)
- 7

FOUND LEAD--BRASS NAIL & 3/4 INCH TAG STAMPED 'TIE PT PLS 5557' ON TOP OF CURB, ACCEPTED AS A TIE PER (R5)
- 8

FOUND 2 INCH IRON PIPE--CONCRETE PLUG & 3/4 INCH TAG STAMPED "PLS 5557", PER (R2), DOWN 0.30 FEET IN DIRT, N80°50'13"W 0.42 FEET OF BC
- 9

FOUND 1 INCH IRON PIPE--CONCRETE PLUG & 3/4 INCH TAG STAMPED "PLS 5557", PER (R2), DOWN 0.40 FEET IN DIRT, ACCEPTED AS CENTERLINE EC OF O'NEILL DRIVE.
- 10

FOUND LEAD--BRASS NAIL & 3/4 INCH TAG STAMPED 'TIE PLS 5557' ON TOP OF CURB, ACCEPTED AS A TIE PER (R6)
- 11

FOUND LEAD--BRASS NAIL & 3/4 INCH TAG STAMPED 'TIE PLS 5557' ON TOP OF CURB, ACCEPTED AS A TIE PER (R6)
- 12

FOUND LEAD--BRASS NAIL & 3/4 INCH TAG STAMPED 'TIE PLS 5557' ON TOP OF CURB, ACCEPTED AS A TIE PER (R6)
- 13

FOUND LEAD--BRASS NAIL & 3/4 INCH TAG STAMPED 'TIE PLS 5557' ON TOP OF CURB, ACCEPTED AS A TIE PER (R6)
- 14

FOUND 2 INCH IRON PIPE--CONCRETE PLUG & 3/4 INCH TAG STAMPED "PLS 5557", PER (R3), FLUSH WITH DIRT, ACCEPTED AS POINT ON CENTERLINE OF SIENNA PARKWAY, S82°11'27"W 0.11 FEET OF BC
- 15

FOUND 2 INCH IRON PIPE--CONCRETE PLUG & 3/4 INCH TAG STAMPED "PLS 5557", PER (R3), DOWN 0.25 FEET IN DIRT, ACCEPTED AS CENTERLINE EC OF SIENNA PARKWAY.
- 16

FOUND BOAT SPIKE & 1-1/2 INCH WASHER STAMPED 'OCS', PER (R8), FLUSH WITH AC, ACCEPTED AS POINT ON THE TANGENT OF THE CENTERLINE OF SIENNA PARKWAY, N54°45'59"E 0.05 FEET OF BC
- 17

FOUND 2 INCH IRON PIPE--CONCRETE PLUG & 3/4 INCH TAG STAMPED "PLS 5557", PER (R4), DOWN 0.40 FEET IN DIRT, ACCEPTED AS POINT ON THE TANGENT OF THE CENTERLINE OF SIENNA PARKWAY, N02°58'53"W 0.04 FEET OF EC
- 18

FOUND 2 INCH IRON PIPE--CONCRETE PLUG & 3/4 INCH TAG STAMPED "PLS 5557", PER (R4), DOWN 0.50 FEET IN DIRT, ACCEPTED AS A POINT ON CENTERLINE OF SIENNA PARKWAY.
- 19

FOUND BOAT SPIKE & 1-1/2 INCH WASHER STAMPED 'OCS', PER (R10), FLUSH WITH ASPHALT CONCRETE, ACCEPTED AS A POINT ON CENTERLINE OF DORRANCE DRIVE.
- 20

FOUND 2 INCH IRON PIPE--CONCRETE PLUG & 3/4 INCH TAG STAMPED 'PLS 5557', PER (R1), DN. 0.20' IN DIRT, ACCEPTED AS A POINT ON CENTERLINE OF O'NEILL DRIVE.

REFERENCES

(R1) = TRACT NO. 16203, MM 826/8-20  
(R2) = TRACT NO. 16235, MM 825/30-39  
(R3) = TRACT NO. 16341, MM 840/1-20  
(R4) = TRACT NO. 15987, MM 839/1-18  
(R5) = CORNER RECORD, C.R. 2004-1028  
(R6) = CORNER RECORD, C.R. 2004-1030  
(R7) = TRACT NO. 15986, MM 849/1-15  
(R8) = CORNER RECORD, C.R. 2020-3301  
(R9) = TRACT NO. 16243, MM 835/34-39  
(R10) = CORNER RECORD, C.R. 2020-3310

LEGEND

- FOUND MONUMENT AS NOTED
- S.F.N., ESTABLISHED BY TIES
- ⊗

S.F.N. - SEARCHED, FOUND NOTHING
- C

CALC FROM RECORD MAP
- R

RECORD MAP
- M

MEASURED
- Ⓢ

EASEMENT AS NOTED

HORIZONTAL DATUM

COORDINATES SHOWN ARE BASED ON THE CALIFORNIA COORDINATE SYSTEM (CCS83), ZONE VI, NAD 83, OCS (2017.50) EPOCH ADJUSTMENT.

ALL DISTANCES SHOWN ARE GRID, UNLESS OTHERWISE NOTED. TO OBTAIN GROUND DISTANCE MULTIPLY A GRID DISTANCE BY 1.00005449.

THIS COMBINATION FACTOR WAS HELD AT: CP# 3718  
N:2144867.72' E:6137545.40' EL:430.25'

RECORD DISTANCES SHOWN HEREON ARE AS THEY APPEAR ON THE DOCUMENT OF RECORD. DISTANCES MAY BE EITHER GRID OR GROUND, AS PER SAID RECORD.

ALL DISTANCES ARE BASED ON THE U.S. SURVEY FOOT.

ESTABLISHMENT NOTES

- Ⓢ

SEARCHED FOUND NOTHING, ESTABLISHED POINT ON CENTERLINE TANGENT TO DORRANCE DRIVE BY TIES PER (R5), S70°54'40"E 0.24 FEET FROM BC
- Ⓢ

ESTABLISHED THE CENTERLINE OF DORRANCE DRIVE BY HOLDING A LINE BETWEEN MONUMENT NOTE 1 AND ESTABLISHMENT NOTE Ⓢ
- Ⓢ

ESTABLISHED THE CENTERLINE OF DORRANCE DRIVE BY HOLDING A LINE BETWEEN MONUMENT NOTES 2 & 3
- Ⓢ

ESTABLISHED THE CENTERLINE OF DORRANCE DRIVE BY HOLDING A RECORD RADIUS OF 550.00 FEET PER (R1) AND TANGENT TO LINE ESTABLISHMENT NOTE Ⓢ AND Ⓢ
- Ⓢ

ESTABLISHED THE N'LY AND S'LY RIGHT OF WAY OF DORRANCE DRIVE BY HOLDING A COURSE PARALLEL WITH, AND A RECORD DISTANCE OF 44 FEET PER (R1) N'LY AND S'LY FROM LINE ESTABLISHMENT NOTES Ⓢ, Ⓢ, AND Ⓢ
- Ⓢ

SEARCHED FOUND NOTHING, ESTABLISHED POINT ON TANGENT TO O'NEILL DRIVE BY TIES PER (R6), S45°26'07"E 0.25 FEET OF EC
- Ⓢ

ESTABLISHED THE CENTERLINE OF DORRANCE DRIVE BY HOLDING A RECORD RADIUS OF 1400.00 FEET PER (R1) AND TANGENT TO LINE ESTABLISHMENT NOTE Ⓢ AND Ⓢ
- Ⓢ

ESTABLISHED THE CENTERLINE OF O'NEILL DRIVE BY HOLDING A LINE BETWEEN MONUMENT NOTES 8 AND 9
- Ⓢ

ESTABLISHED THE N'LY AND S'LY RIGHT OF WAY OF O'NEILL DRIVE BY HOLDING A COURSE PARALLEL WITH, AND A RECORD DISTANCE OF 36 FEET PER (R1) N'LY AND S'LY FROM LINE ESTABLISHMENT Ⓢ
- Ⓢ

ESTABLISHED THE CENTERLINE OF SIENNA PARKWAY BY HOLDING A LINE BETWEEN MONUMENT NOTES 15 AND 16
- Ⓢ

ESTABLISHED THE CENTERLINE OF SIENNA PARKWAY BY HOLDING A LINE BETWEEN MONUMENT NOTES 17 AND 18
- Ⓢ

ESTABLISHED THE CENTERLINE OF SIENNA PARKWAY BY HOLDING A RECORD RADIUS OF 550.00 FEET PER (R4) AND TANGENT TO LINE ESTABLISHMENT NOTES Ⓢ AND Ⓢ BETWEEN MONUMENT NOTES 16 AND 17
- Ⓢ

ESTABLISHED THE CENTERLINE OF SIENNA PARKWAY BY HOLDING A RECORD RADIUS OF 655.00 FEET PER (R3) AND TANGENT TO LINE ESTABLISHMENT NOTE Ⓢ SOUTHWESTERLY FROM MONUMENT NOTE 15
- Ⓢ

ESTABLISHED THE N'LY AND S'LY RIGHT OF WAY OF SIENNA PARKWAY BY HOLDING A COURSE PARALLEL WITH, AND A RECORD DISTANCE OF 38 FEET, PER (R3) AND (R4) N'LY AND S'LY FROM LINE ESTABLISHMENT NOTES Ⓢ, Ⓢ, AND, Ⓢ
- Ⓢ

ESTABLISHED THE CENTERLINE OF O'NEILL DRIVE BY HOLDING A LINE BETWEEN MONUMENT NOTE 20 AND ESTABLISHMENT NOTE Ⓢ

EASEMENT NOTES

- 1

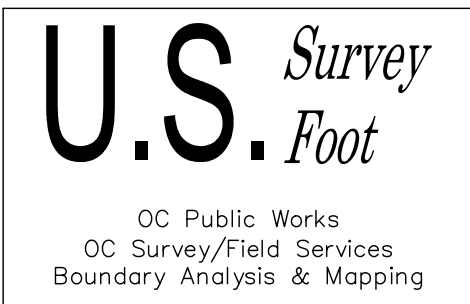
SIDE WALK EASEMENT GRANTED TO THE COUNTY OF ORANGE PER (R1)
- 2

SIDE WALK EASEMENT GRANTED TO THE COUNTY OF ORANGE PER (R3)
- 3

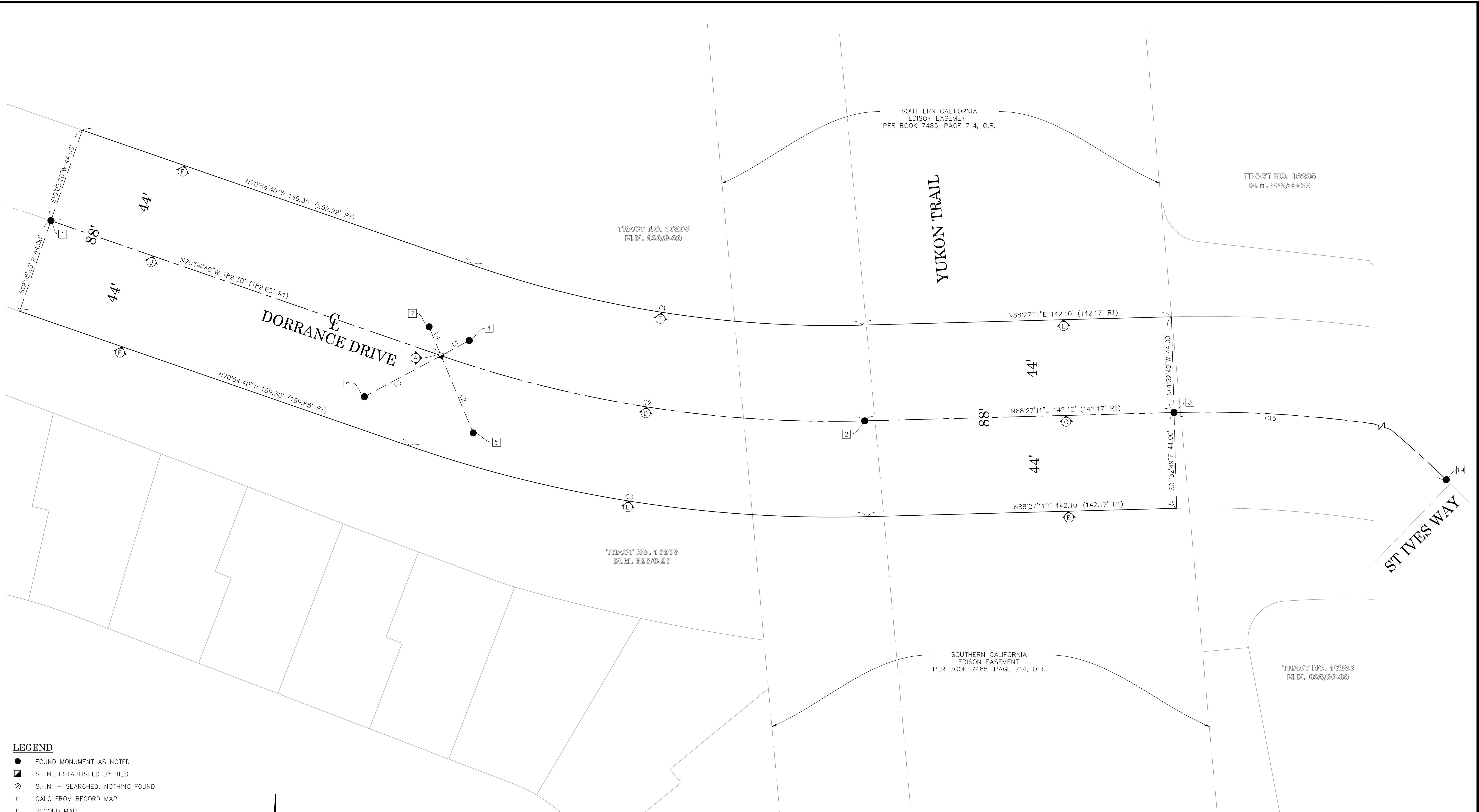
SIDE WALK EASEMENT GRANTED TO THE COUNTY OF ORANGE PER (R7)

| LINE TABLE |             |                   |                   |
|------------|-------------|-------------------|-------------------|
| LINE #     | BEARING     | MEASURED DISTANCE | RECORD DISTANCE   |
| L1         | N61°48'18"E | 14.68'            | (14.68' R5)       |
| L2         | N22°33'17"W | 38.44'            | (38.37' R5)       |
| L3         | N61°48'18"E | 39.92'            | (39.93' R5)       |
| L4         | N22°33'17"W | 14.31'            | (14.31' R5)       |
| L5         | N00°37'59"W | 9.61'             | (9.62' R6)        |
| L6         | N73°17'20"W | 14.69'            | (14.70' R6)       |
| L7         | N00°37'59"W | 9.58'             | (9.60' R6)        |
| L8         | N73°17'20"W | 14.52'            | (14.51' R6)       |
| L9         | N54°45'59"E | 233.56'           | (233.52' C R3&R4) |
| L10        | N54°45'59"E | 233.54'           | (233.53' C R3&R4) |
| L11        | N54°45'59"E | 233.54'           | (233.53' C R3&R4) |
| L12        | N02°58'53"W | 467.22'           | (467.30' R4)      |
| L13        | N02°58'53"W | 467.22'           | (467.30' R4)      |
| L14        | N44°34'29"E | 36.00'            | -                 |
| L15        | N44°34'29"E | 36.00'            | -                 |
| L16        | S05°14'29"E | 38.49'            | -                 |
| L17        | N05°14'29"W | 38.64'            | -                 |
| L18        | N80°50'13"W | 115.83'           | (115.89 R2)       |
| L19        | N80°50'13"W | 109.97'           | (109.89 R2)       |
| L20        | S45°26'07"E | 511.50'           | (511.24 R1)       |

| CURVE TABLE |           |          |         |                  |               |                |
|-------------|-----------|----------|---------|------------------|---------------|----------------|
| CURVE #     | DELTA     | RADIUS   | LENGTH  | RECORD DELTA     | RECORD RADIUS | RECORD LENGTH  |
| C1          | 20°38'09" | 505.97'  | 182.23' | (20°37'10" R1)   | (506.00' R1)  | (182.10' R1)   |
| C2          | 20°38'09" | 549.97'  | 198.08' | (20°37'10" R1)   | (550.00' R1)  | (197.93' R1)   |
| C3          | 20°38'09" | 593.97'  | 213.93' | (20°37'10" R1)   | (594.00' R1)  | (213.77' R1)   |
| C4          | 28°13'24" | 1363.93' | 671.86' | (28°13'30" R1)   | (1364.00' R1) | (671.93' R1)   |
| C5          | 35°24'06" | 1399.93' | 864.98' | (35°25'07" R1)   | (1400.00' R1) | (865.44' R1)   |
| C6          | 29°21'22" | 1435.93' | 735.71' | (29°21'27" R1)   | (1436.00' R1) | (735.78' R1)   |
| C7          | 34°15'00" | 654.96'  | 391.52' | (34°15'00" R3)   | (655.00' R3)  | (391.54' R3)   |
| C8          | 57°44'53" | 549.97'  | 554.31' | (57°45'00" R4)   | (550.00' R3)  | (554.36' R3)   |
| C9          | 28°48'19" | 1399.93' | 703.81' | (28°48'25" R1)   | (1400.00' R1) | (703.89' R1)   |
| C10         | 6°37'25"  | 1399.93' | 161.84' | (06°36'42" R2)   | (1400.00' R2) | (161.55' R2)   |
| C11         | 12°17'27" | 549.97'  | 117.98' | (28°48'25" R1)   | (1400.00' R1) | (703.89' R1)   |
| C12         | 45°27'25" | 549.97'  | 436.33' | (06°36'42" R2)   | (1400.00' R2) | (161.55' R2)   |
| C13         | 57°44'53" | 511.97'  | 516.01' | (57°45'00" R4)   | (512.00' R4)  | (516.06' R1)   |
| C14         | 57°44'53" | 587.97'  | 592.61' | (57°45'00" C R4) | (588.00' R4)  | (592.66' C R4) |
| C15         | 45°27'28" | 549.97'  | 436.34' | (45°27'28" R9)   | (550.00' R9)  | (436.36' R9)   |

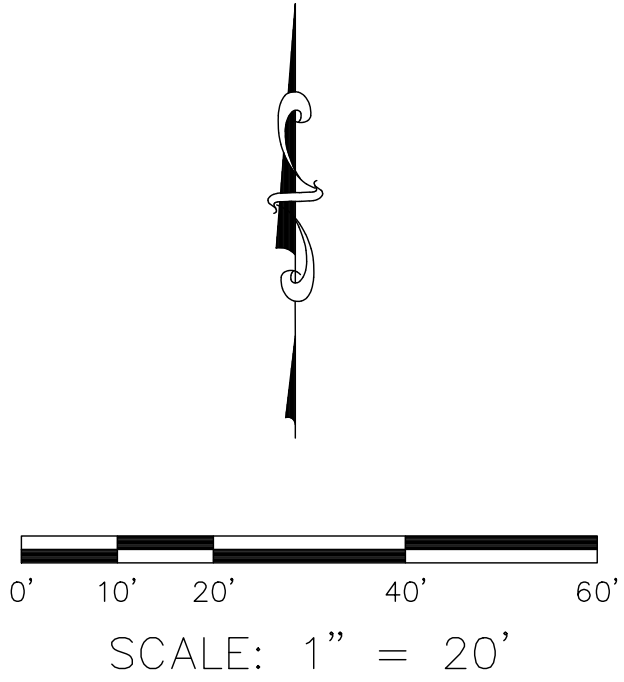
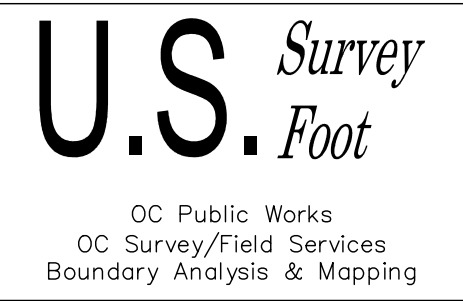


|           |      |      |  |  |                      |                                       |
|-----------|------|------|--|--|----------------------|---------------------------------------|
|           |      |      | COUNTY OF ORANGE<br>OC PUBLIC WORKS<br>OC SURVEY/FIELD SERVICES/BOUNDARY ANALYSIS & MAPPING              |  |                      |                                       |
|           |      |      | YUKON BOTANICA TRAIL<br>RAMP CROSSING UPGRADES   |  |                      |                                       |
|           |      |      | CENTERLINE ESTABLISHMENT   |  |                      |                                       |
|           |      |      | PROJECT LIMITS: INTERSECTIONS ALONG YOKON BOTANICA TRAILS AT DORRANCE DR,<br>O'NEILL DR. AND SIENNA PKWY |  |                      |                                       |
|           |      |      | DATE OF SURVEY:01/24/2022  |  | BY:P. MAGUIRE & CREW | SHEET NO.<br><br>2<br><br>of<br><br>8 |
|           |      |      | MAPPING  |  | BY:I. ISLAS          |                                       |
|           |      |      | OFFICE CHECK   |  | BY:E. MEDINA, PLS    |                                       |
|           |      |      | FIELD CHECK  |  | BY:P. MAGUIRE & CREW |                                       |
| MARK      | DATE | ITEM | SCALE: N.T.S.  |  | W.O. #E03088         | FILE # 2122PW-TF0001                  |
| REVISIONS |      |      | FILE: YUKON TRAIL_BOUNDARY_2022.DWG  |  |                      |                                       |



LEGEND

- FOUND MONUMENT AS NOTED
- S.F.N., ESTABLISHED BY TIES
- ⊗ S.F.N. — SEARCHED, NOTHING FOUND
- C CALC FROM RECORD MAP
- R RECORD MAP
- M MEASURED
- # EASEMENT AS NOTED



NOTES

ALL BOUNDARY LINES NOT SHOWN IN BOLD ARE FOR GRAPHICAL REPRESENTATION ONLY.

RECORD DISTANCES SHOWN HEREON ARE AS THEY APPEAR ON THE DOCUMENT OF RECORD. DISTANCES MAY BE EITHER GRID OR GROUND, AS PER SAID RECORD.

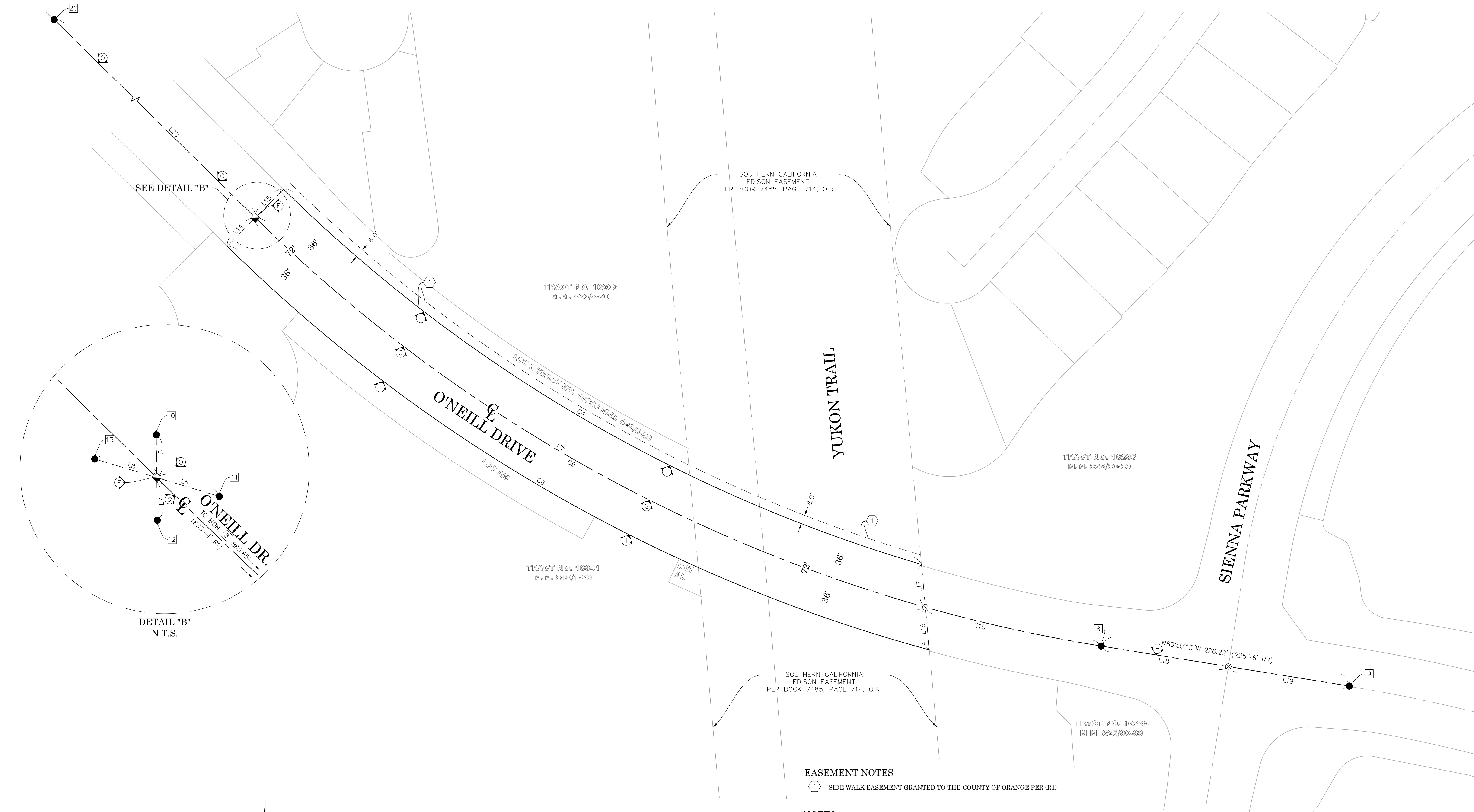
MONUMENT SYMBOLS CONTAIN LIVE HYPERLINKS TO IMAGES, IF THEY EXIST, OF RESPECTIVE MONUMENT.

SEE SHEET 2 FOR ESTABLISHMENT NOTES, MONUMENT NOTES, LINE TABLE, CURVE TABLE, AND REFERENCES.

A FULL BOUNDARY SURVEY WAS NOT PERFORMED, BOUNDARY SHOWN HEREON IS LIMITED BASED ON SCOPE OF PROJECT. FURTHER INVESTIGATION AND ANALYSIS REQUIRED FOR AREAS BEYOND THIS SCOPE.

|      |      |  |               |   |                       |
|------|------|--|---------------|---|-----------------------|
|      |      |  |               | COUNTY OF ORANGE<br>OC PUBLIC WORKS<br>OC SURVEY/FIELD SERVICES/BOUNDARY ANALYSIS & MAPPING |                       |
|      |      | YUKON BOTANICA TRAIL<br>RAMP CROSSING UPGRADES   |               |   |                       |
|      |      | CENTERLINE ESTABLISHMENT   |               |   |                       |
|      |      | PROJECT LIMITS: INTERSECTIONS ALONG YUKON BOTANICA TRAILS AT DORRANCE DR,<br>O'NEILL DR, AND SIENNA PKWY |               |   |                       |
|      |      | DATE OF SURVEY: 01/24/2022   |               | BY: P. MAGUIRE & CREW   |                       |
|      |      | MAPPING  |               | BY: I. ISLAS  |                       |
|      |      | OFFICE CHECK   |               | BY: E. MEDINA, PLS  |                       |
| MARK | DATE | ITEM   | FIELD CHECK   |   | BY: P. MAGUIRE & CREW |
|      |      |  | SCALE: 1"=20' | W.O. #ER03088   | FILE #2122PW-TF0001   |
|      |      |  | REVISIONS     |   |                       |
|      |      | FILE: YUKON_TRAIL_BOUNDARY_2022.DWG  |               |   |                       |

|           |  |
|-----------|--|
| SHEET NO. |  |
| 3         |  |
| of        |  |
| 8         |  |



EASEMENT NOTES

1 SIDE WALK EASEMENT GRANTED TO THE COUNTY OF ORANGE PER (R1)

NOTES

ALL BOUNDARY LINES NOT SHOWN IN BOLD ARE FOR GRAPHICAL REPRESENTATION ONLY.

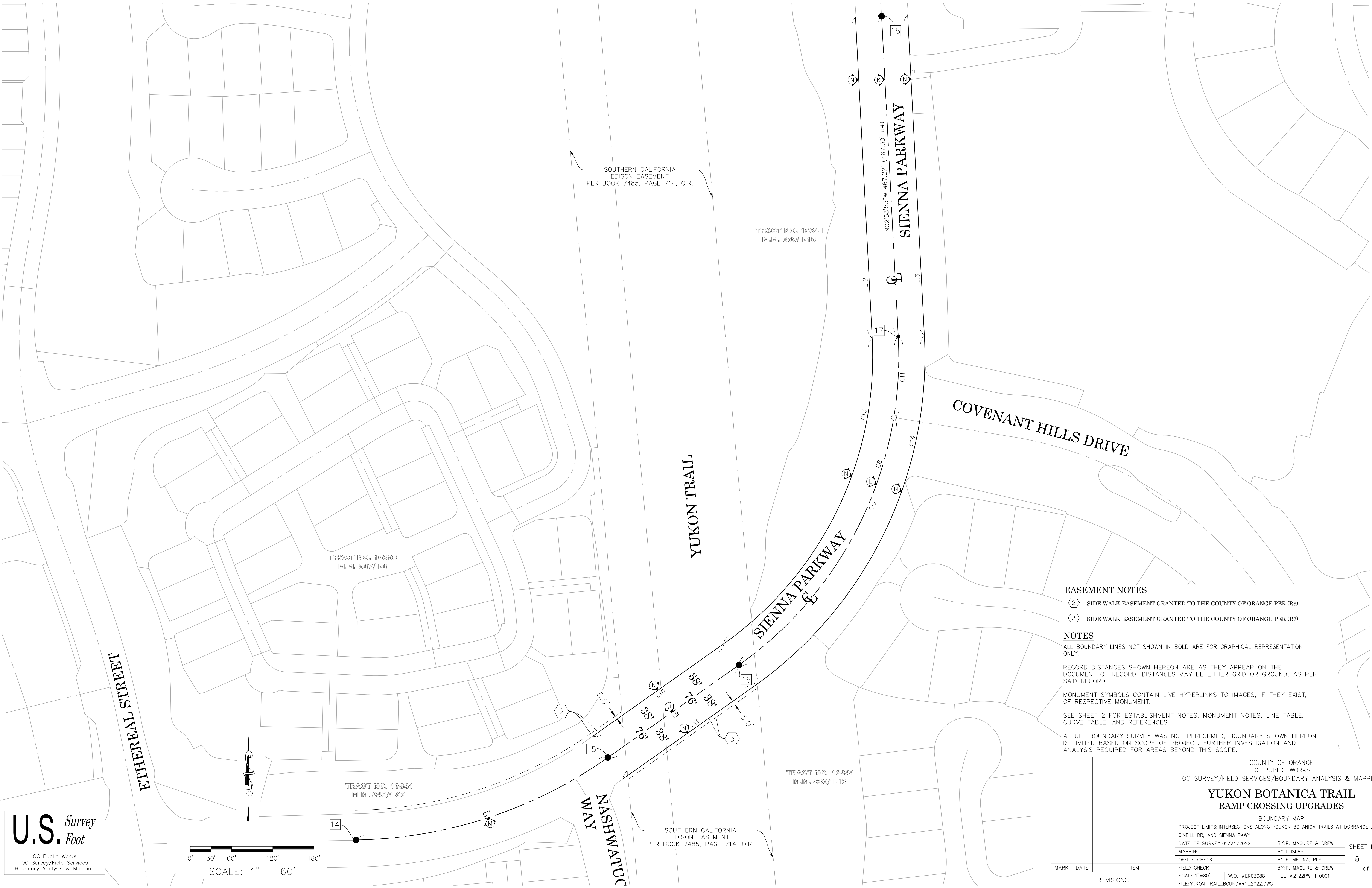
RECORD DISTANCES SHOWN HEREON ARE AS THEY APPEAR ON THE DOCUMENT OF RECORD. DISTANCES MAY BE EITHER GRID OR GROUND, AS PER SAID RECORD.

MONUMENT SYMBOLS CONTAIN LIVE HYPERLINKS TO IMAGES, IF THEY EXIST, OF RESPECTIVE MONUMENT.

SEE SHEET 2 FOR ESTABLISHMENT NOTES, MONUMENT NOTES, LINE TABLE, CURVE TABLE, AND REFERENCES.

A FULL BOUNDARY SURVEY WAS NOT PERFORMED, BOUNDARY SHOWN HEREON IS LIMITED BASED ON SCOPE OF PROJECT. FURTHER INVESTIGATION AND ANALYSIS REQUIRED FOR AREAS BEYOND THIS SCOPE.

|  |  |  |   |      |                                      |           |                                   |
|--|--|--|---|------|--------------------------------------|-----------|-----------------------------------|
|  |  |  | COUNTY OF ORANGE<br>OC PUBLIC WORKS<br>OC SURVEY/FIELD SERVICES/BOUNDARY ANALYSIS & MAPPING               |      |                                      |           |                                   |
|  |  |  | YUKON BOTANICA TRAIL<br>RAMP CROSSING UPGRADES  |      |                                      |           |                                   |
|  |  |  | BOUNDARY MAP  |      |                                      |           |                                   |
|  |  |  | PROJECT LIMITS: INTERSECTIONS ALONG YUKON BOTANICA TRAILS AT DORRANCE DR.,<br>O'NEILL DR, AND SIENNA PKWY |      |                                      |           |                                   |
|  |  |  | DATE OF SURVEY: 01/24/2022  |      | BY: P. MAGUIRE & CREW                |           | SHEET NO.<br><br>4<br>of<br><br>8 |
|  |  |  | MAPPING   |      | BY: I. ISLAS                         |           |                                   |
|  |  |  | OFFICE CHECK  |      | BY: E. MEDINA, PLS                   |           |                                   |
|  |  |  | FIELD CHECK   |      | BY: P. MAGUIRE & CREW                |           |                                   |
|  |  |  | SCALE: 1"=40'   |      | W.O. #E03088<br>FILE # 2122PW-TF0001 |           |                                   |
|  |  |  | MARK  | DATE | ITEM                                 | REVISIONS |                                   |



**EASEMENT NOTES**

- 2 SIDE WALK EASEMENT GRANTED TO THE COUNTY OF ORANGE PER (R3)
- 3 SIDE WALK EASEMENT GRANTED TO THE COUNTY OF ORANGE PER (R7)

**NOTES**

ALL BOUNDARY LINES NOT SHOWN IN BOLD ARE FOR GRAPHICAL REPRESENTATION ONLY.

RECORD DISTANCES SHOWN HEREON ARE AS THEY APPEAR ON THE DOCUMENT OF RECORD. DISTANCES MAY BE EITHER GRID OR GROUND, AS PER SAID RECORD.

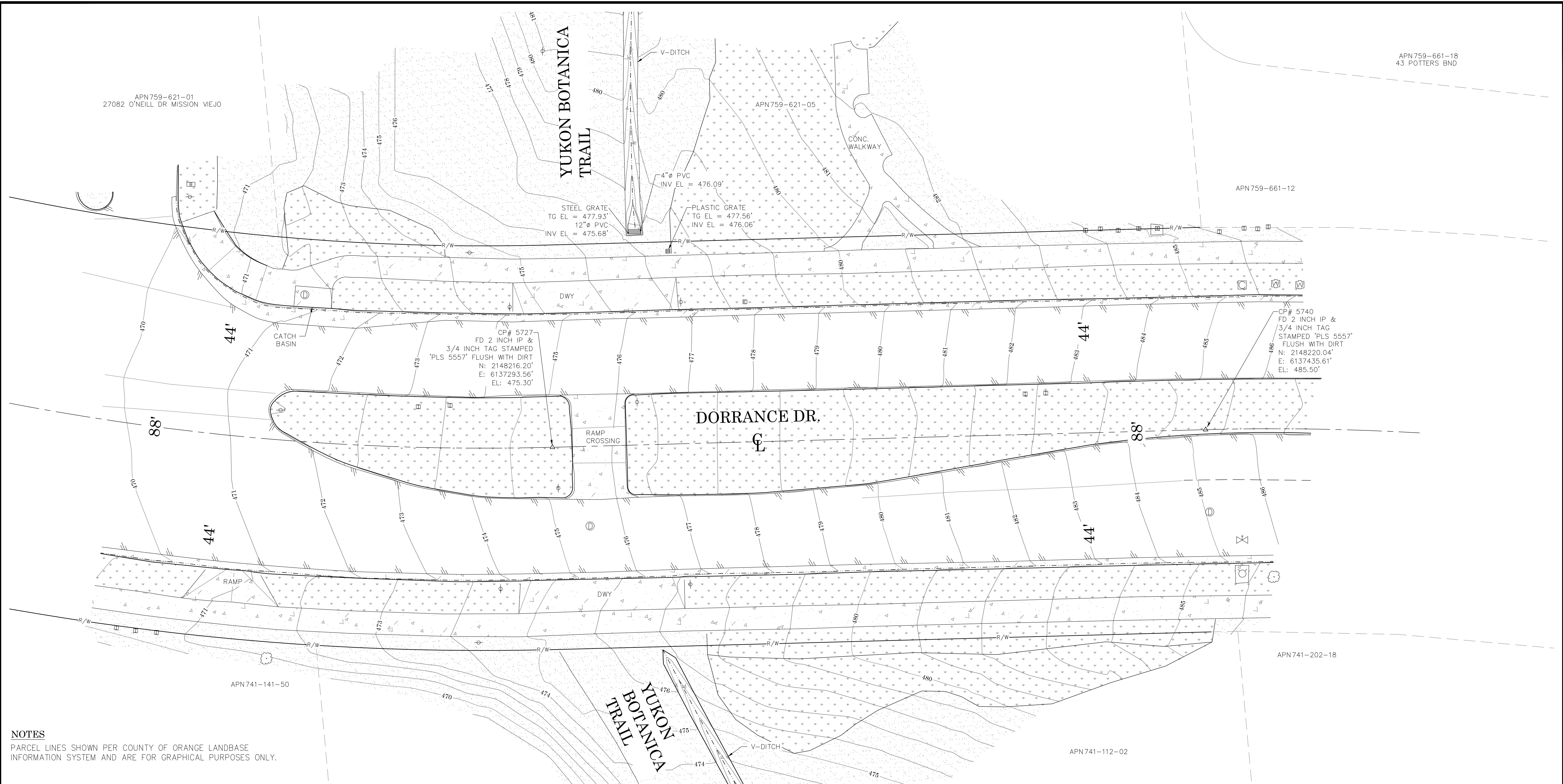
MONUMENT SYMBOLS CONTAIN LIVE HYPERLINKS TO IMAGES, IF THEY EXIST, OF RESPECTIVE MONUMENT.

SEE SHEET 2 FOR ESTABLISHMENT NOTES, MONUMENT NOTES, LINE TABLE, CURVE TABLE, AND REFERENCES.

A FULL BOUNDARY SURVEY WAS NOT PERFORMED, BOUNDARY SHOWN HEREON IS LIMITED BASED ON SCOPE OF PROJECT. FURTHER INVESTIGATION AND ANALYSIS REQUIRED FOR AREAS BEYOND THIS SCOPE.

|                  |      |  |           |                       |  |
|------------------|------|--|-----------|-----------------------|--|
|                  |      | COUNTY OF ORANGE<br>OC PUBLIC WORKS<br>OC SURVEY/FIELD SERVICES/BOUNDARY ANALYSIS & MAPPING              |           |                       |  |
|                  |      | YUKON BOTANICA TRAIL<br>RAMP CROSSING UPGRADES   |           |                       |  |
|                  |      | BOUNDARY MAP   |           |                       |  |
|                  |      | PROJECT LIMITS: INTERSECTIONS ALONG YUKON BOTANICA TRAILS AT DORRANCE DR.<br>O'NEILL DR. AND SIENNA PKWY |           |                       |  |
|                  |      | DATE OF SURVEY: 01/24/2022   |           | BY: P. MAGUIRE & CREW |  |
|                  |      | MAPPING  |           | BY: I. ISLAS          |  |
|                  |      | OFFICE CHECK   |           | BY: E. MEDINA, PLS    |  |
|                  |      | FIELD CHECK  |           | BY: P. MAGUIRE & CREW |  |
|                  |      | SCALE: 1"=80'  |           | W.O. #ER03088         |  |
|                  |      | FILE: YUKON_TRAIL_BOUNDARY_2022.DWG  |           | FILE # 2122PW-TF0001  |  |
| MARK             | DATE | ITEM   | REVISIONS |                       |  |
| SHEET NO. 5 of 8 |      |  |           |                       |  |





NOTES

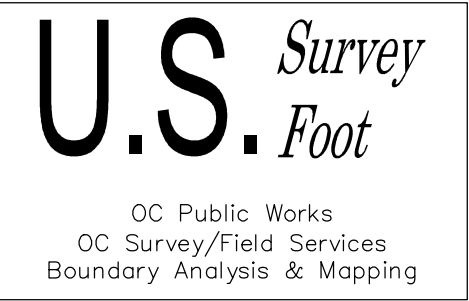
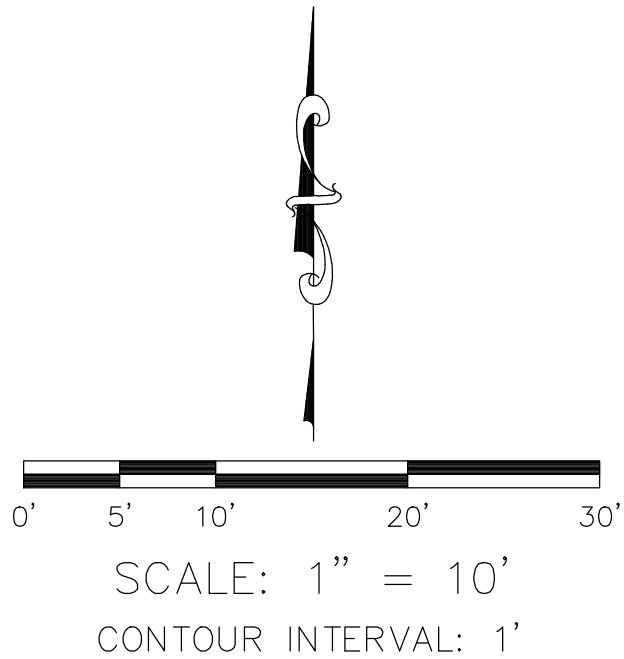
PARCEL LINES SHOWN PER COUNTY OF ORANGE LANDBASE INFORMATION SYSTEM AND ARE FOR GRAPHICAL PURPOSES ONLY.

LEGEND

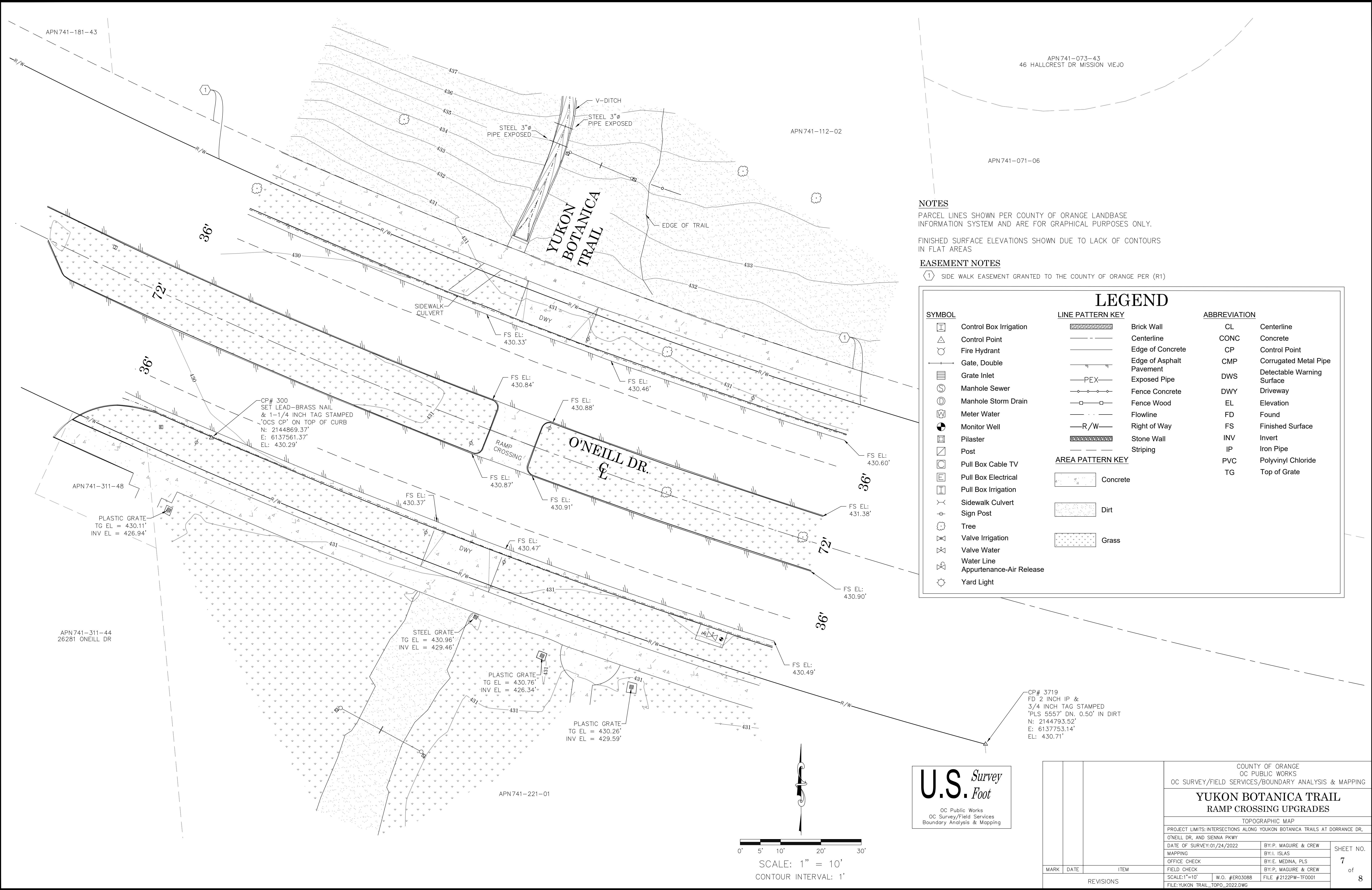
| SYMBOL | SYMBOL | LINE PATTERN KEY | ABBREVIATION | ABBREVIATION               |
|--------|--------|------------------|--------------|----------------------------|
|        |        |                  | CL           | Centerline                 |
|        |        |                  | CONC         | Concrete                   |
|        |        |                  | CP           | Control Point              |
|        |        |                  | CMP          | Corrugated Metal Pipe      |
|        |        |                  | DWS          | Detectable Warning Surface |
|        |        |                  | DWY          | Driveway                   |
|        |        |                  | EL           | Elevation                  |
|        |        |                  | FD           | Found                      |
|        |        |                  | INV          | Invert                     |
|        |        |                  | IP           | Iron Pipe                  |
|        |        |                  | PVC          | Polyvinyl Chloride         |
|        |        |                  | TG           | Top of Grate               |

AREA PATTERN KEY

|  |          |
|--|----------|
|  | Concrete |
|  | Dirt     |
|  | Grass    |



|      |      |      |   |  |                       |  |                               |
|------|------|------|---|--|-----------------------|--|-------------------------------|
|      |      |      | COUNTY OF ORANGE<br>OC PUBLIC WORKS<br>OC SURVEY/FIELD SERVICES/BOUNDARY ANALYSIS & MAPPING               |  |                       |  |                               |
|      |      |      | YUKON BOTANICA TRAIL<br>RAMP CROSSING UPGRADES  |  |                       |  |                               |
|      |      |      | TOPOGRAPHIC MAP   |  |                       |  |                               |
|      |      |      | PROJECT LIMITS: INTERSECTIONS ALONG YUKON BOTANICA TRAILS AT DORRANCE DR.,<br>O'NEILL DR, AND SIENNA PKWY |  |                       |  |                               |
|      |      |      | DATE OF SURVEY: 01/24/2022  |  | BY: P. MAGUIRE & CREW |  | SHEET NO.<br><br>6<br>of<br>8 |
|      |      |      | MAPPING   |  | BY: I. ISLAS          |  |                               |
|      |      |      | OFFICE CHECK  |  | BY: E. MEDINA, PLS    |  |                               |
|      |      |      | FIELD CHECK   |  | BY: P. MAGUIRE & CREW |  |                               |
|      |      |      | SCALE: 1"=10'   |  | W.O. #E030388         |  | FILE #2122PW-TF0001           |
|      |      |      | FILE: YUKON_TRAIL_TOPO_2022.DWG   |  |                       |  |                               |
| MARK | DATE | ITEM | REVISIONS   |  |                       |  |                               |



NOTES

PARCEL LINES SHOWN PER COUNTY OF ORANGE LANDBASE INFORMATION SYSTEM AND ARE FOR GRAPHICAL PURPOSES ONLY.

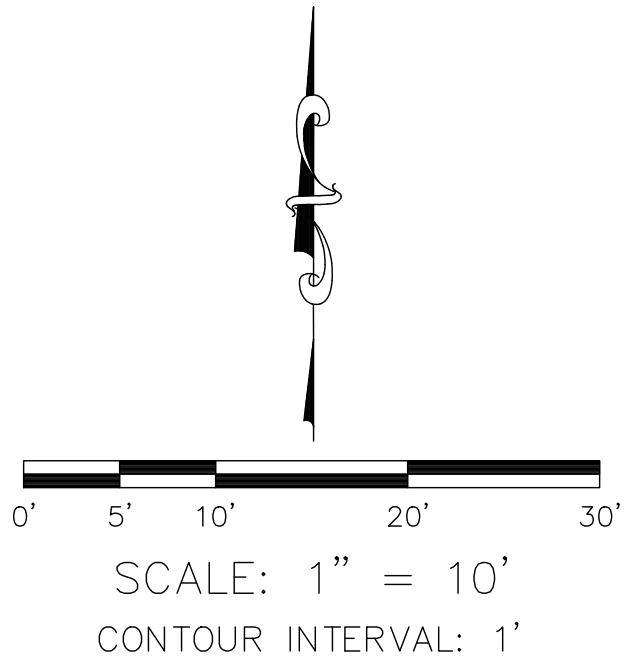
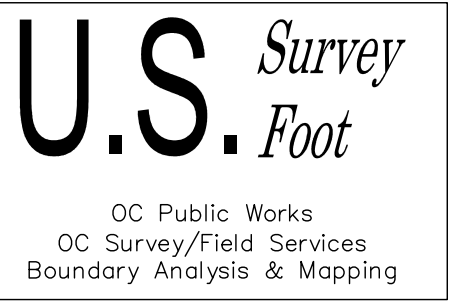
FINISHED SURFACE ELEVATIONS SHOWN DUE TO LACK OF CONTOURS IN FLAT AREAS

EASEMENT NOTES

① SIDE WALK EASEMENT GRANTED TO THE COUNTY OF ORANGE PER (R1)

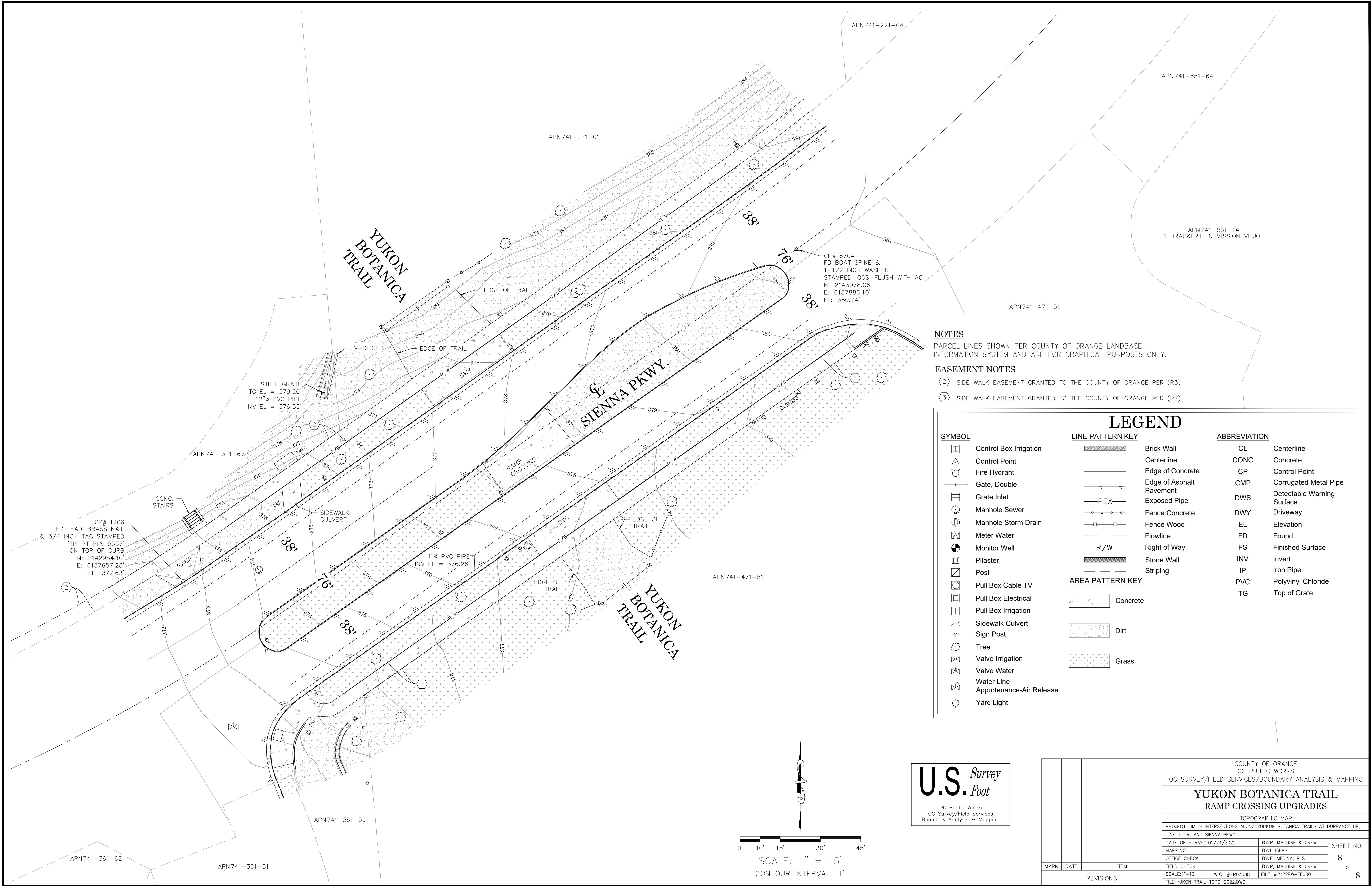
LEGEND

| SYMBOL |                          | LINE PATTERN KEY |                          | ABBREVIATION |                            |
|--------|--------------------------|------------------|--------------------------|--------------|----------------------------|
|        | Control Box Irrigation   |                  | Brick Wall               | CL           | Centerline                 |
|        | Control Point            |                  | Centerline               | CONC         | Concrete                   |
|        | Fire Hydrant             |                  | Edge of Concrete         | CP           | Control Point              |
|        | Gate, Double             |                  | Edge of Asphalt Pavement | CMP          | Corrugated Metal Pipe      |
|        | Grate Inlet              |                  | Exposed Pipe             | DWS          | Detectable Warning Surface |
|        | Manhole Sewer            |                  | Fence Concrete           | DWY          | Driveway                   |
|        | Manhole Storm Drain      |                  | Fence Wood               | EL           | Elevation                  |
|        | Meter Water              |                  | Flowline                 | FD           | Found                      |
|        | Monitor Well             |                  | Right of Way             | FS           | Finished Surface           |
|        | Pilaster                 |                  | Stone Wall               | INV          | Invert                     |
|        | Post                     |                  | Striping                 | IP           | Iron Pipe                  |
|        | Pull Box Cable TV        | AREA PATTERN KEY |                          | PVC          | Polyvinyl Chloride         |
|        | Pull Box Electrical      |                  |                          | TG           | Top of Grate               |
|        | Pull Box Irrigation      |                  |                          |              |                            |
|        | Sidewalk Culvert         |                  | Concrete                 |              |                            |
|        | Sign Post                |                  | Dirt                     |              |                            |
|        | Tree                     |                  | Grass                    |              |                            |
|        | Valve Irrigation         |                  |                          |              |                            |
|        | Valve Water              |                  |                          |              |                            |
|        | Water Line               |                  |                          |              |                            |
|        | Appurtenance-Air Release |                  |                          |              |                            |
|        | Yard Light               |                  |                          |              |                            |



|      |      |   |           |                       |                               |
|------|------|---|-----------|-----------------------|-------------------------------|
|      |      | COUNTY OF ORANGE<br>OC PUBLIC WORKS<br>OC SURVEY/FIELD SERVICES/BOUNDARY ANALYSIS & MAPPING               |           |                       |                               |
|      |      | YUKON BOTANICA TRAIL<br>RAMP CROSSING UPGRADES  |           |                       |                               |
|      |      | TOPOGRAPHIC MAP   |           |                       |                               |
|      |      | PROJECT LIMITS: INTERSECTIONS ALONG YUKON BOTANICA TRAILS AT DORRANCE DR.,<br>O'NEILL DR. AND SIENNA PKWY |           |                       |                               |
|      |      | DATE OF SURVEY: 01/24/2022  |           | BY: P. MAGUIRE & CREW |                               |
|      |      | MAPPING   |           | BY: L. ISLAS          |                               |
|      |      | OFFICE CHECK  |           | BY: E. MEDINA, PLS    |                               |
|      |      | FIELD CHECK   |           | BY: P. MAGUIRE & CREW |                               |
|      |      | SCALE: 1"=10'   |           | W.O. #ER03088         |                               |
|      |      | FILE: YUKON TRAIL_TOPO_2022.DWG   |           | FILE # 2122PW-1F0001  |                               |
| MARK | DATE | ITEM  | REVISIONS |                       | SHEET NO.<br><br>7<br>of<br>8 |





**NOTES**  
PARCEL LINES SHOWN PER COUNTY OF ORANGE LANDBASE INFORMATION SYSTEM AND ARE FOR GRAPHICAL PURPOSES ONLY.

**EASEMENT NOTES**

② SIDE WALK EASEMENT GRANTED TO THE COUNTY OF ORANGE PER (R3)

③ SIDE WALK EASEMENT GRANTED TO THE COUNTY OF ORANGE PER (R7)

**SYMBOL**

- Control Box Irrigation
- Control Point
- Fire Hydrant
- Gate, Double
- Grate Inlet
- Manhole Sewer
- Manhole Storm Drain
- Meter Water
- Monitor Well
- Pilaster
- Post
- Pull Box Cable TV
- Pull Box Electrical
- Pull Box Irrigation
- Sidewalk Culvert
- Sign Post
- Tree
- Valve Irrigation
- Valve Water
- Water Line
- Appurtenance-Air Release
- Yard Light

**LINE PATTERN KEY**

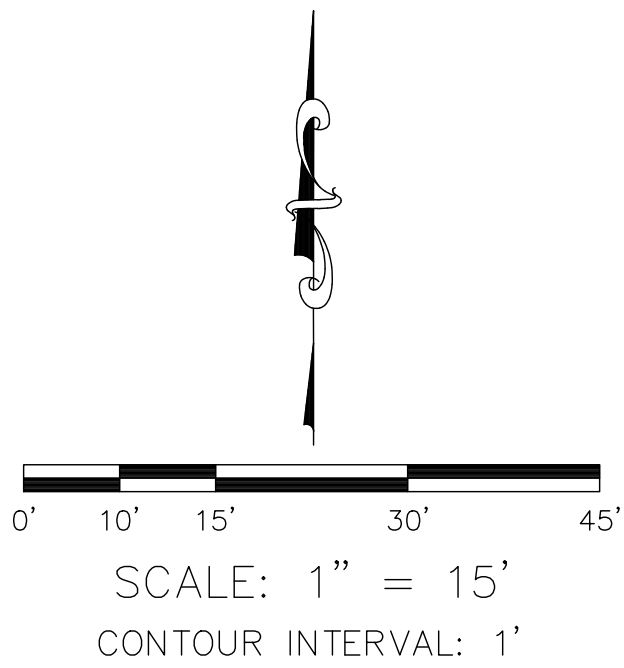
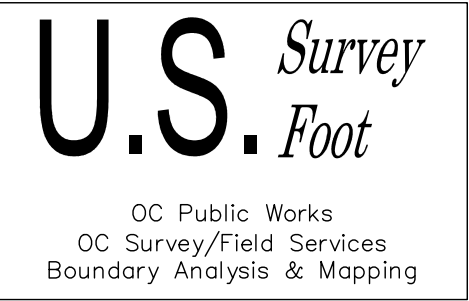
- Brick Wall
- Centerline
- Edge of Concrete
- Edge of Asphalt Pavement
- Exposed Pipe
- Fence Concrete
- Fence Wood
- Flowline
- Right of Way
- Stone Wall
- Striping

**AREA PATTERN KEY**

- Concrete
- Dirt
- Grass

**ABBREVIATION**

|      |                            |
|------|----------------------------|
| CL   | Centerline                 |
| CONC | Concrete                   |
| CP   | Control Point              |
| CMP  | Corrugated Metal Pipe      |
| DWS  | Detectable Warning Surface |
| DWY  | Driveway                   |
| EL   | Elevation                  |
| FD   | Found                      |
| FS   | Finished Surface           |
| INV  | Invert                     |
| IP   | Iron Pipe                  |
| PVC  | Polyvinyl Chloride         |
| TG   | Top of Grate               |



|      |      |      |  |  |  |  |                               |
|------|------|------|--|--|--|--|-------------------------------|
| MARK | DATE | ITEM | COUNTY OF ORANGE<br>OC PUBLIC WORKS<br>OC SURVEY/FIELD SERVICES/BOUNDARY ANALYSIS & MAPPING              |  |  |  |                               |
|      |      |      | YUKON BOTANICA TRAIL<br>RAMP CROSSING UPGRADES   |  |  |  |                               |
|      |      |      | TOPOGRAPHIC MAP  |  |  |  |                               |
|      |      |      | PROJECT LIMITS: INTERSECTIONS ALONG YUKON BOTANICA TRAILS AT DORRANCE DR,<br>O'NEILL DR, AND SIENNA PKWY |  |  |  |                               |
|      |      |      | DATE OF SURVEY: 01/24/2022   |  | BY: P. MAGUIRE & CREW                            |  | SHEET NO.<br><br>8<br>of<br>8 |
|      |      |      | MAPPING  |  | BY: I. ISLAS                                     |  |                               |
|      |      |      | OFFICE CHECK   |  | BY: E. MEDINA, PLS                               |  |                               |
|      |      |      | FIELD CHECK  |  | BY: P. MAGUIRE & CREW                            |  |                               |
|      |      |      | SCALE: 1"=10'  |  | W.O. #ER03088<br>FILE: YUKON_TRAIL_TOPO_2022.DWG |  |                               |
|      |      |      | REVISIONS  |  |  |  |                               |