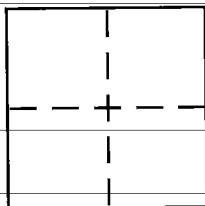


# CORNER RECORD

Document Number 2004-1312 BCity of OrangeCounty of Orange, CaliforniaBrief Legal Description Chapman Avenue & Eckhoff Street.

## CORNER TYPE

Government Corner ☐ Control ☒  
Meander ☐ Property ☐  
Rancho ☐ Other ☐  
Date of Survey 06/01/2004

## COORDINATES (Optional)

N. \_\_\_\_\_  
E. \_\_\_\_\_  
Zone \_\_\_\_\_ NAD27 ☐ NAD83 ☐  
NAD83 Epoch \_\_\_\_\_  
Elev. \_\_\_\_\_  
Vert. Datum: NGVD29 ☐ NAVD88 ☐  
Meas. Units: Metric ☐ Imperial ☐

Corner – Left as found ☐ Found and tagged ☐ Established ☐ Reestablished ☒ Rebuilt ☐

Identification and type of corner found: Evidence used to identify or procedure used to establish or reestablish the corner:

Found as described on the reverse of this sheet.

A description of the physical condition of the monument as found and as set or reset: \_\_\_\_\_

These ties are for the purpose of perpetuating the found monumentation pursuant to the PLS Act Section 8771. No claim is made as to the relationship of the points or lines shown hereon to true boundary location.

## SURVEYOR'S STATEMENT

This Corner Record was prepared by me or under my direction in conformance with the Land Surveyor's Act on 6/08/2004

Signed [Signature] P.L.S or R.C.E. No. L.S. 5411

## COUNTY SURVEYOR'S STATEMENT

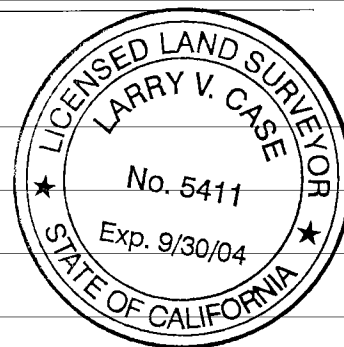
This Corner Record was received AUG 09 2004

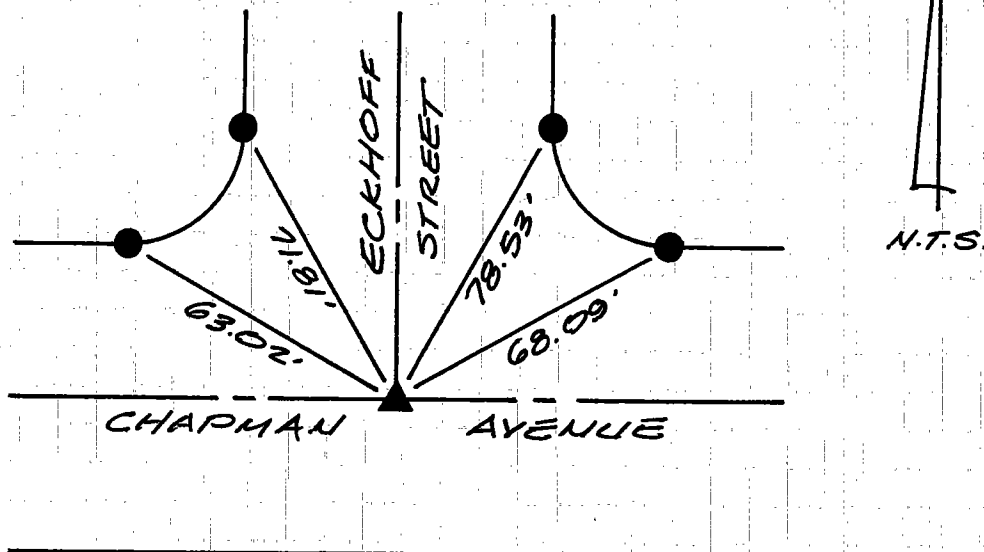
and examined and filed AUG 24 2004

Signed [Signature] P.L.S or R.C.E. No. L.S. 6254

Title DEPUTY COUNTY SURVEYOR

County Surveyor's Comment \_\_\_\_\_





R-1= COUNTY OF ORANGE CORNER RECORD No. 2004-0617A.

- ▲ NOTHING FD. SET PK/W L.S. 5411 PER TIES SHOWN ON R-1 AFTER CONST.
- FD. L/T WITH LS 5411 TAG PER R-1.

The purpose of this record is to document the perpetuation of found monument(s). Pursuant to the PLS Act Section 8771. No claim is made regarding the correctness of the position(s) of said monument(s), nor the dimensional relationship to street centerlines or property boundaries.

03.RJN.719C