

DATE OF SURVEY:
MAY 2003

IN THE CITY OF ORANGE, COUNTY OF ORANGE, STATE OF CALIFORNIA

BEING A SURVEY OF A PORTION OF LOT 1 OF THE DAWN TRACT AS RECORDED
IN BOOK 8, PAGE 21 OF MISCELLANEOUS MAPS, IN THE OFFICE OF THE COUNTY RECORDER OF SAID COUNTY,
TOGETHER WITH A PORTION OF THE SOUTHERN PACIFIC RAILROAD COMPANY'S 100-FOOT RIGHT OF WAY, SANTA ANA
BRANCH, IN RANCHO SAN JUAN CAJON DE SANTA ANA AND IN RANCHO SANTIAGO DE SANTA ANA.

MAY 2003

JOHN R. DUQUETTE, L.S. 7566

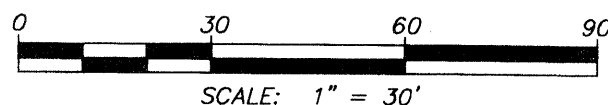
HUITT-ZOLLARS

ACCEPTED AND FILED AT THE
REQUEST
UNIVERSITY OF CALIFORNIA, IRVINE

DATE JULY 31, 2003
TIME 10:39 AM FEE \$ 9.00
INSTRUMENT NO. 2003000916540
BOOK 195 PAGE 39-40A
TOM DALY
COUNTY CLERK - RECORDER
BY [Signature]
DEPUTY



SCALE IN FEET



SURVEYOR'S STATEMENT.

THIS MAP CORRECTLY REPRESENTS A SURVEY MADE BY ME OR UNDER MY DIRECTION IN CONFORMANCE WITH THE REQUIREMENTS OF THE PROFESSIONAL LAND SURVEYOR'S ACT AT THE REQUEST OF THE UNIVERSITY OF CALIFORNIA IRVINE, DESIGN AND CONSTRUCTION SERVICES, IN MAY 2003.

JOHN R. DUQUETTE, LS 7566
REGISTRATION EXPIRES 12/31/03

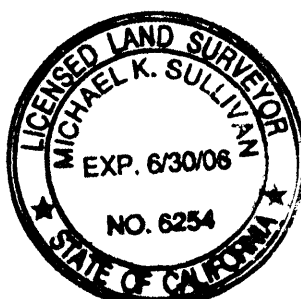


COUNTY SURVEYOR'S STATEMENT.

THIS MAP HAS BEEN EXAMINED IN ACCORDANCE WITH SECTION 8766 OF THE
PROFESSIONAL LAND SURVEYOR'S ACT THIS 30TH DAY OF JULY, 2003.

JOHN CANAS
COUNTY SURVEYOR

BY: Michael K. Sullivan
MICHAEL K. SULLIVAN, DEPUTY COUNTY SURVEYOR
LS 6254, EXPIRES 6/30/06



PURPOSE STATEMENT.

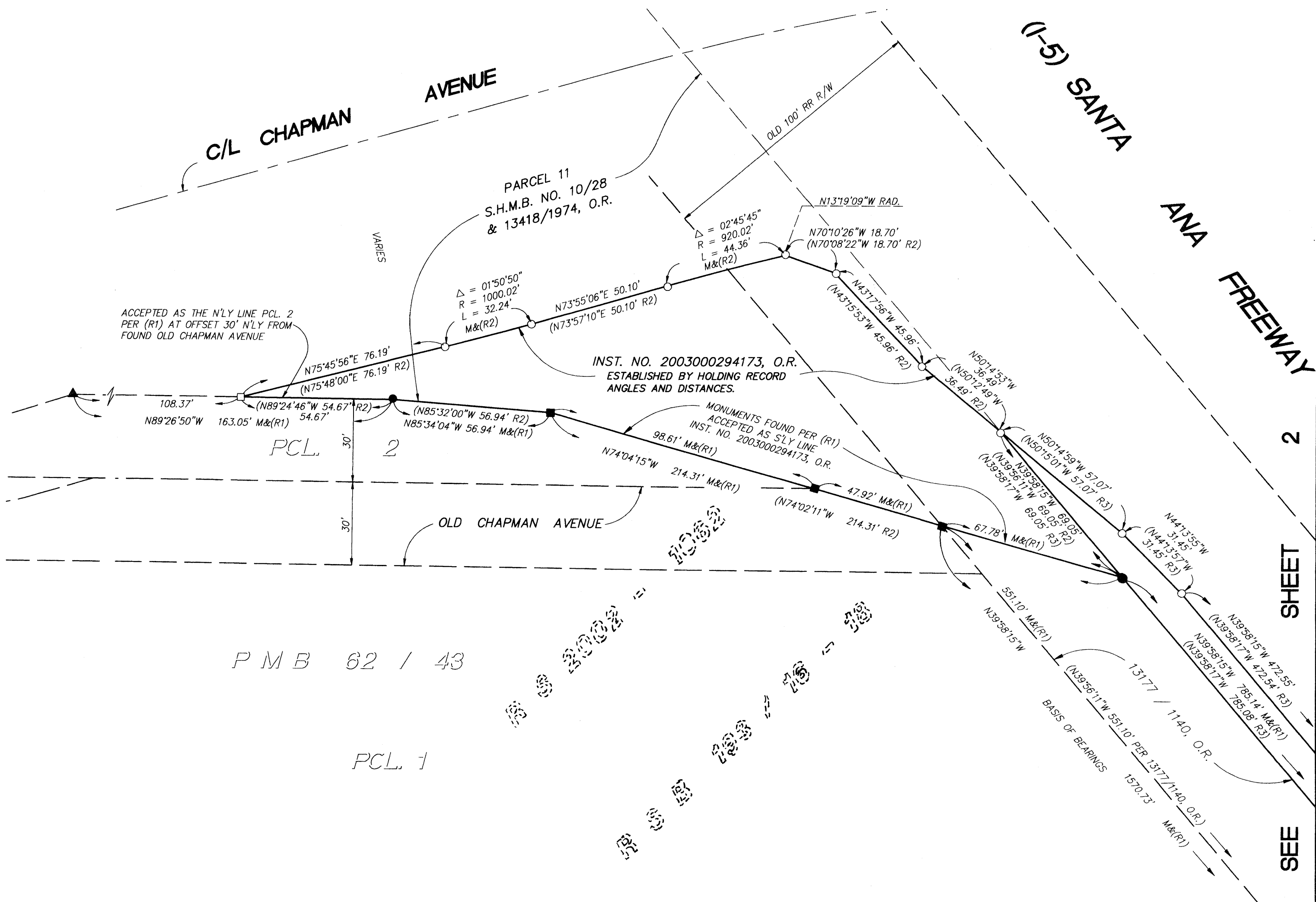
THE PURPOSE OF THIS SURVEY IS TO ESTABLISH AND MONUMENT THAT CERTAIN LAND CONVEYED TO THE REGENTS OF THE UNIVERSITY OF CALIFORNIA BY THE FOLLOWING DOCUMENTS: INSTRUMENT NO. 2003000294173, O.R. AND INSTRUMENT NO. 2003000425637, O.R.

BASIS OF BEARINGS.

THE BEARINGS SHOWN HEREON ARE BASED ON THE NE'LY LINE OF
PARCEL 1 OF PMB 62/43 BEING N39°56'11"W AS SHOWN ON RECORD OF SURVEY
2002-1062, RSB 193/16-18 RECORDS OF ORANGE COUNTY.

MONUMENT NOTES/REFERENCE.

- INDICATES FOUND 1" I.P W/NAIL AND TAG STAMPED "LS 7566"
PER RECORD OF SURVEY 2002-1062, RSB 193/16-18, UNLESS NOTED OTHERWISE.
 - INDICATES FOUND 2" I.P WITH NAIL AND TAG STAMPED "OCS RCE 6978"
PER RECORD OF SURVEY 2002-1062, RSB 193/16-18.
 - ▲ INDICATES FOUND LEAD AND TAG STAMPED "LS 7566"
PER RS 2002-1062, RSB 193/16-18.
 - INDICATES SET 1" I.P WITH NAIL AND TAG STAMPED "LS 7566".
 - INDICATES SET LEAD, TACK AND TAG STAMPED "LS 7566".
- (R1) INDICATES MEASURED AND RECORD DATA PER RS 2002-1062,
RSB 193/16-18.
- (R2) INDICATES RECORD DATA PER INSTRUMENT NO. 2003000294173, O.R.
- (R3) INDICATES RECORD DATA PER INSTRUMENT NO. 2003000425637, O.R.



DUPLICATE

195 40

SHEET 2 OF 2 SHEETS

DATE OF SURVEY:
MAY 2003

RECORD OF SURVEY 2003-1051

IN THE CITY OF ORANGE, COUNTY OF ORANGE, STATE OF CALIFORNIA

MAY 2003

JOHN R. DUQUETTE, L.S. 7566

HUITT-ZOLIARS

SEE SHEET 1

FD SPIKE & WASHER STAMPED
"LS 7566" PER RS 2002-1062

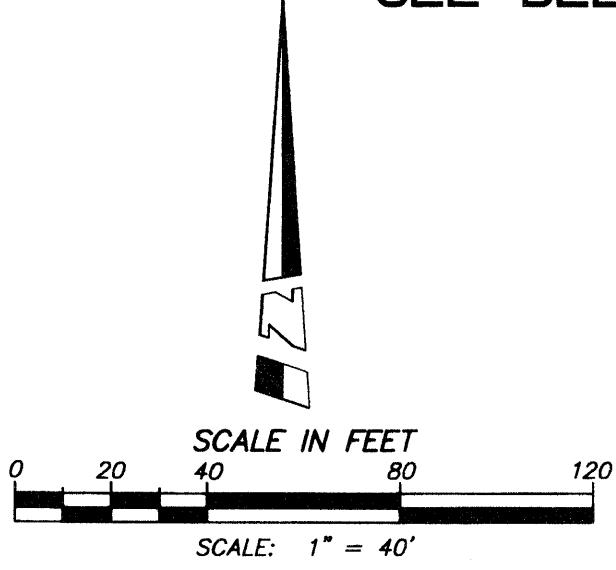
PMB 62 / 43

PCL 1

(I-5) SANTA ANA FREEWAY

SEE ABOVE RIGHT

SEE BELOW LEFT



PMB 62 / 43

PCL 1

(I-5) SANTA ANA FREEWAY

RS 2002-1062
RSB 193 / 16 - 18

FD 1" IP W/TAG STAMPED "LS 2988"
PER RS 2002-1062
HELD POINT AS SWLY LINE OF SPRR LINE

SEE SHEET 1 FOR BASIS OF BEARINGS, PURPOSE STATEMENT,
AND FOR MONUMENT NOTES/REFERENCES.

195 40