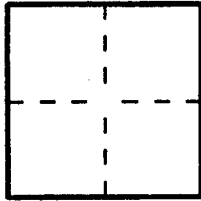


# CORNER RECORD

Document Number 2012-2202 BCity of Orange County of Orange, CaliforniaBrief Legal Description Chapman Avenue & 57 off-ramp/ 22 on-ramp/ Anita Drive

## CORNER TYPE

Government Corner ☐ Control ☒  
Meander ☐ Property ☐  
Rancho ☐ Other ☐  
Date of Survey 05/21/12

## COORDINATES (Optional)

N. \_\_\_\_\_  
E. \_\_\_\_\_  
Zone \_\_\_\_\_ NAD27 ☐ NAD83 ☐  
NAD83 Epoch \_\_\_\_\_  
Elevation \_\_\_\_\_  
Vertical Datum: NGVD29 ☐ NAVD88 ☐  
Units: Metric ☐ Imperial ☐ U.S. Survey ☒

Corner — Left as found ☐ Found and tagged ☐ Established ☐ Reestablished ☒ Rebuilt ☐

Identification and type of corner found; Evidence used to identify or procedure used to establish or reestablish the corner.  
Found as described on the reverse of this sheet.

A description of the physical condition of the monument as found and as set or reset: \_\_\_\_\_

See Sheet 2

## SURVEYOR'S STATEMENT

This Corner Record was prepared by me or under my direction in conformance with  
the Professional Land Surveyors' Act on June 21, 2012

Signed [Signature] P.L.S. or R.C.E. No. L.S. 5411



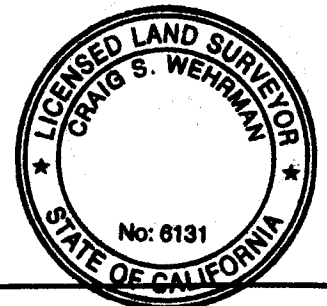
## COUNTY SURVEYOR'S STATEMENT

This Corner Record was received JUN 26 2012

examined and filed AUG 07 2012

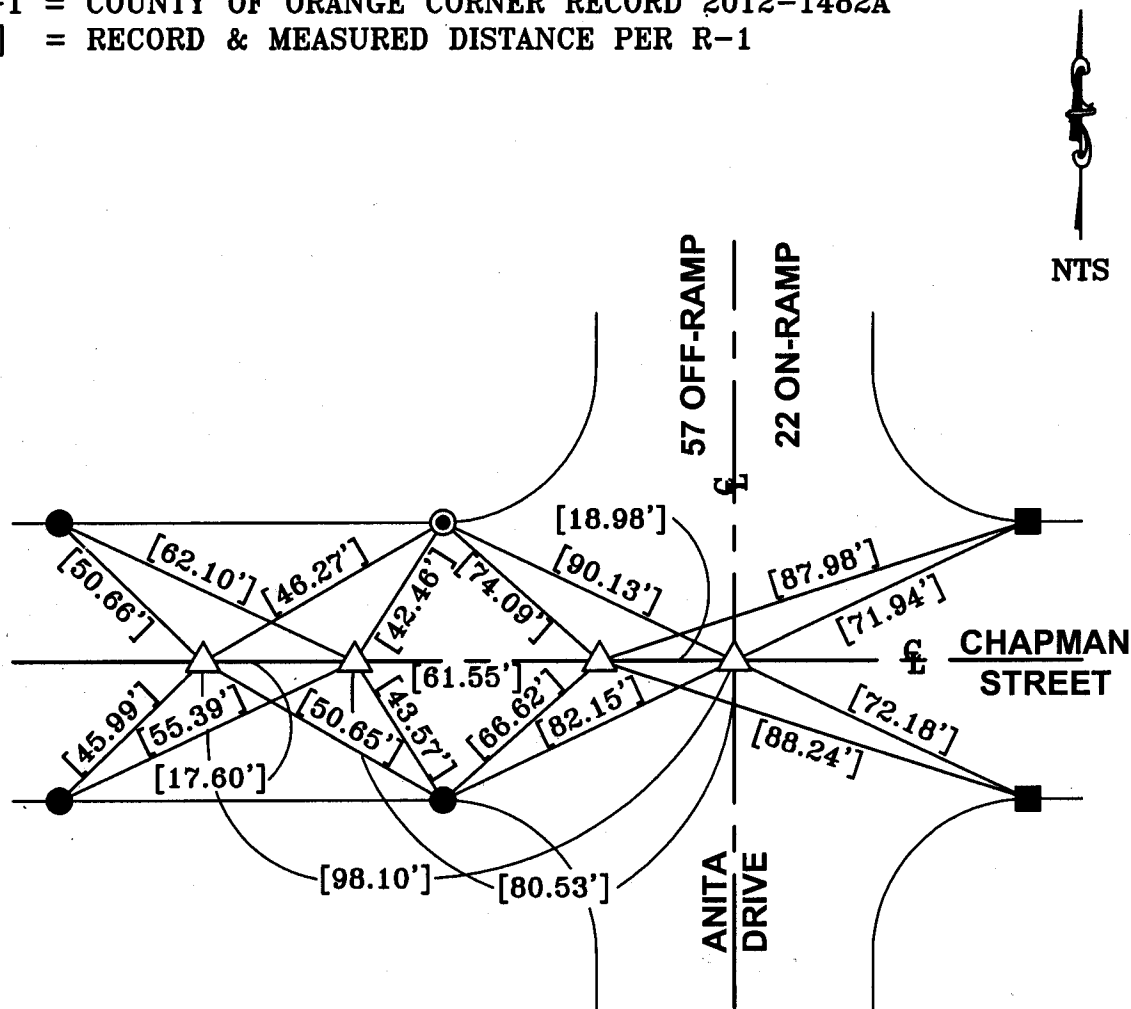
Signed [Signature] P.L.S. or R.C.E. No. 6131

Title Deputy Surveyor



County Surveyor's Comment \_\_\_\_\_

R-1 = COUNTY OF ORANGE CORNER RECORD 2012-1482A  
 [ ] = RECORD & MEASURED DISTANCE PER R-1



△ FD NOTHING, SET GEAR SPK/W "LS 5411" FLUSH PER TIES ON R-1 AFTER CONSTRUCTION.

● FD L/T "OCS" IN T.C. PER R-1.

◎ FD L/T "RCE 16356" IN T.C. PER R-1.

■ FD L/T "LS 5411" IN T.C. PER R-1.

ALL MEASURED DISTANCES SHOWN HEREON ARE SLOPE DISTANCES, UNLESS OTHERWISE NOTED.

THE PURPOSE OF THIS RECORD IS TO DOCUMENT THE PERPETUATION OF FOUND MONUMENT(S) PURSUANT TO THE PLS ACT SECTION 8771. NO CLAIM IS MADE REGARDING THE CORRECTNESS OF THE POSITION(S) OF SAID MONUMENT(S), NOR THE DIMENSIONAL RELATIONSHIP TO STREET CENTERLINES OR PROPERTY BOUNDARIES.

11-RJN-831