



OC PUBLIC WORKS DEPARTMENT

SHANE SILSBY, DIRECTOR

KEVIN HILLS, COUNTY SURVEYOR

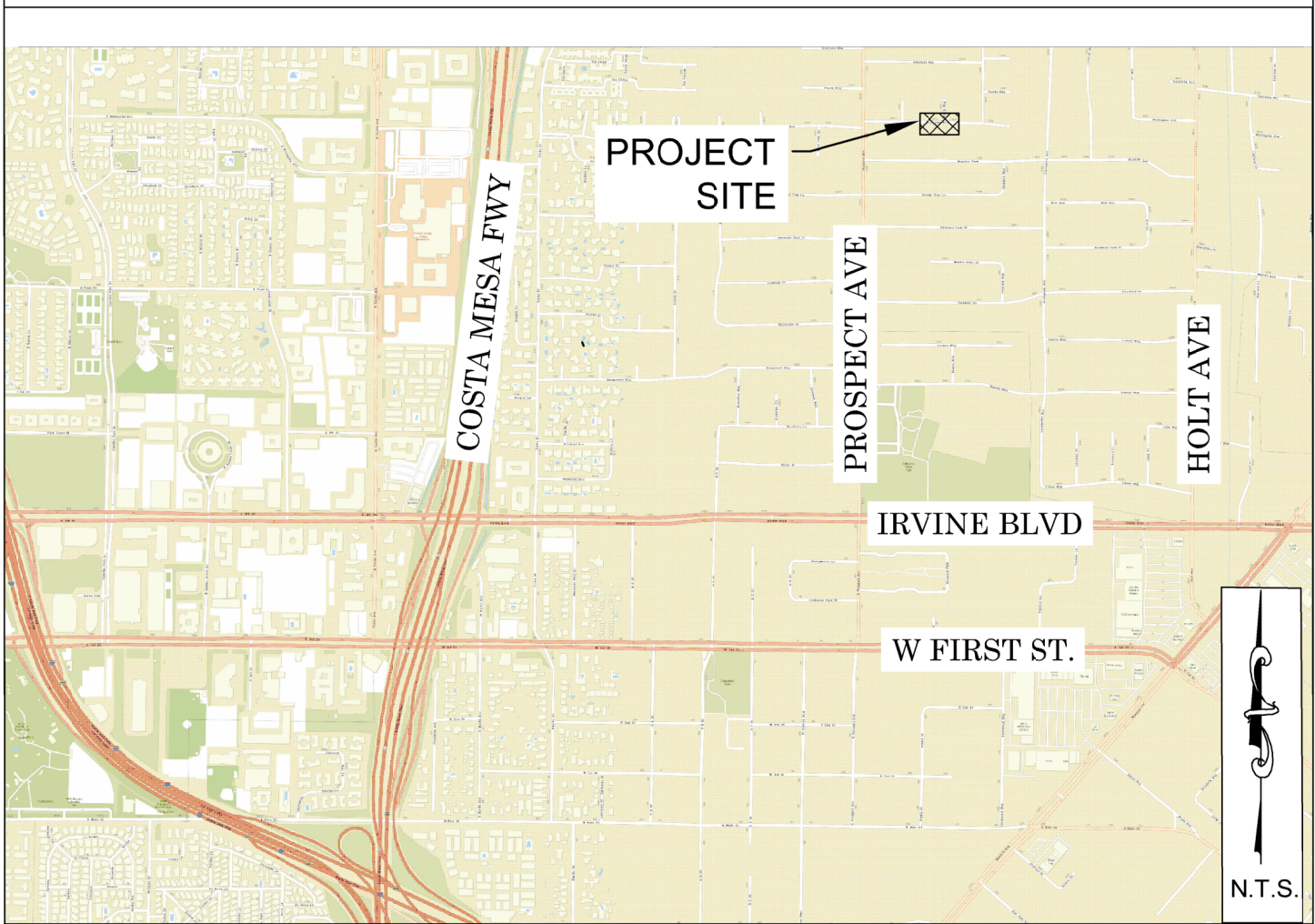
17882 WELLINGTON AVENUE

REPLACEMENT OF CORRUGATED METAL PIPE



FOUND CGPS "CCCS"
N: 2261349.77'
E: 6071418.65'
THIS IS A CONTINUOUS GPS STATION
(CGPS) AND IS PART OF THE
CALIFORNIA SPATIAL REFERENCE
NETWORK (CSRN), FROM WHICH DATA
CAN BE DOWNLOADED HERE:
[HTTP://SOPACCSRC.UCSD.EDU/](http://SOPACCSRC.UCSD.EDU/).

LOCATION MAP



FOUND SPIKE (NO TAG), DN. 0.38',
N: 2222311.89'
E: 6083728.28'

SENIOR LAND SURVEYOR'S CERTIFICATE:

THIS MAP CORRECTLY REPRESENTS A SURVEY MADE BY ME
OR UNDER MY DIRECTION IN CONFORMANCE WITH
REQUIREMENTS OF THE PROFESSIONAL LAND SURVEYOR'S
ACT; THIS 20 DAY OF SEPTEMBER, 2019.

JESOM MORENO, PLS SENIOR LAND SURVEYOR



DEPUTY COUNTY SURVEYOR'S STATEMENT:

THIS MAP HAS BEEN EXAMINED IN ACCORDANCE WITH THE
PROFESSIONAL LAND SURVEYOR'S ACT; THIS 20 DAY OF
SEPTEMBER, 2019.

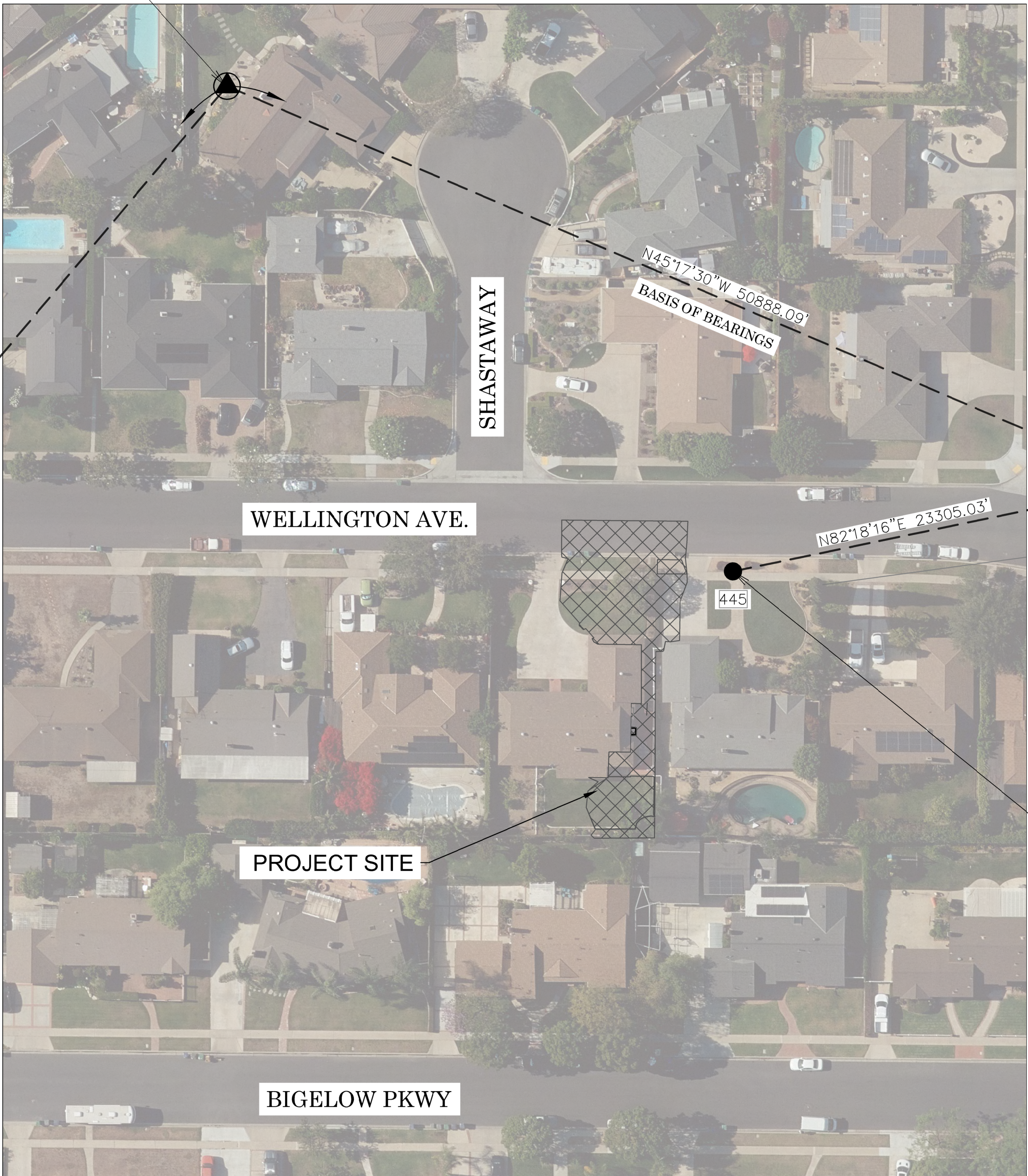
WADE D. WEAVER, PLS DEPUTY COUNTY SURVEYOR



U.S. Survey
Foot

OC Public Works
OC Survey/Field Services
Boundary Analysis & Mapping

N.T.S.



BASIS OF BEARINGS

THE BASIS OF BEARINGS FOR THIS SURVEY IS BASED ON THE CALIFORNIA
COORDINATE SYSTEM (CCS83), ZONE VI, NAD 83, O.C.S. 2007.00 EPOCH
ADJUSTMENT, AS DETERMINED LOCALLY BY A LINE BETWEEN CONTINUOUS GLOBAL
POSITIONING STATIONS (CGPS) "CCCS" AND "OEOC", BEING N45°17'30"W, AS
DERIVED FROM THE COORDINATES PUBLISHED BY THE CALIFORNIA SPATIAL
REFERENCE CENTER (CSRC) ALONG WITH DATA SHEETS ON FILE IN THE OFFICE OF
THE ORANGE COUNTY SURVEYOR.

HORIZONTAL DATUM

COORDINATES SHOWN HEREON ARE BASED ON THE CALIFORNIA COORDINATE
SYSTEM (CCS83), ZONE VI, 1983 NORTH AMERICAN DATUM 2007.00 EPOCH
O.C.S. G.P.S. ADJUSTMENT.

ALL MEASURED DISTANCES SHOWN ARE GRID, UNLESS OTHERWISE NOTED.
MULTIPLY THE GRID DISTANCE BY 1.00002076 TO OBTAIN GROUND DISTANCE.

THE COMBINATION FACTOR WAS DERIVED FROM POINT AT MONUMENT 445.

ALL DISTANCES ARE BASED ON THE U.S. SURVEY FOOT.

VERTICAL DATUM

O.C.S. BM. 3C-23-71 ELEV. = 167.072' YEAR LEVELED: 2010.
NAVD 1988 (O.C.S. 1995 ADJUSTMENT)

DESCRIPTION: DESCRIBED BY OCS 2002 - FOUND 3 3/4" OCS ALUMINUM
BENCHMARK DISK STAMPED "3C-23-71", SET IN THE SOUTHEASTERLY CORNER OF
A 4 FT. BY 15 FT. CONCRETE CATCH BASIN. MONUMENT IS LOCATED ALONG THE
NORTHERLY SIDE OF 17TH STREET, 0.2 MILES EASTERLY OF THE CENTERLINE OF
YORBA STREET (NORTH) AND 42.3 FT. NORTHERLY OF THE CENTERLINE OF 17TH
STREET. MONUMENT IS SET LEVEL WITH THE SIDEWALK.

NOTES

THE SURVEY INFORMATION SHOWN HEREON IS TO BE USED FOR TOPOGRAPHIC
RELATIONSHIPS ONLY AND IS NOT INTENDED FOR LAND ACQUISITION OR
BOUNDARY PURPOSES.

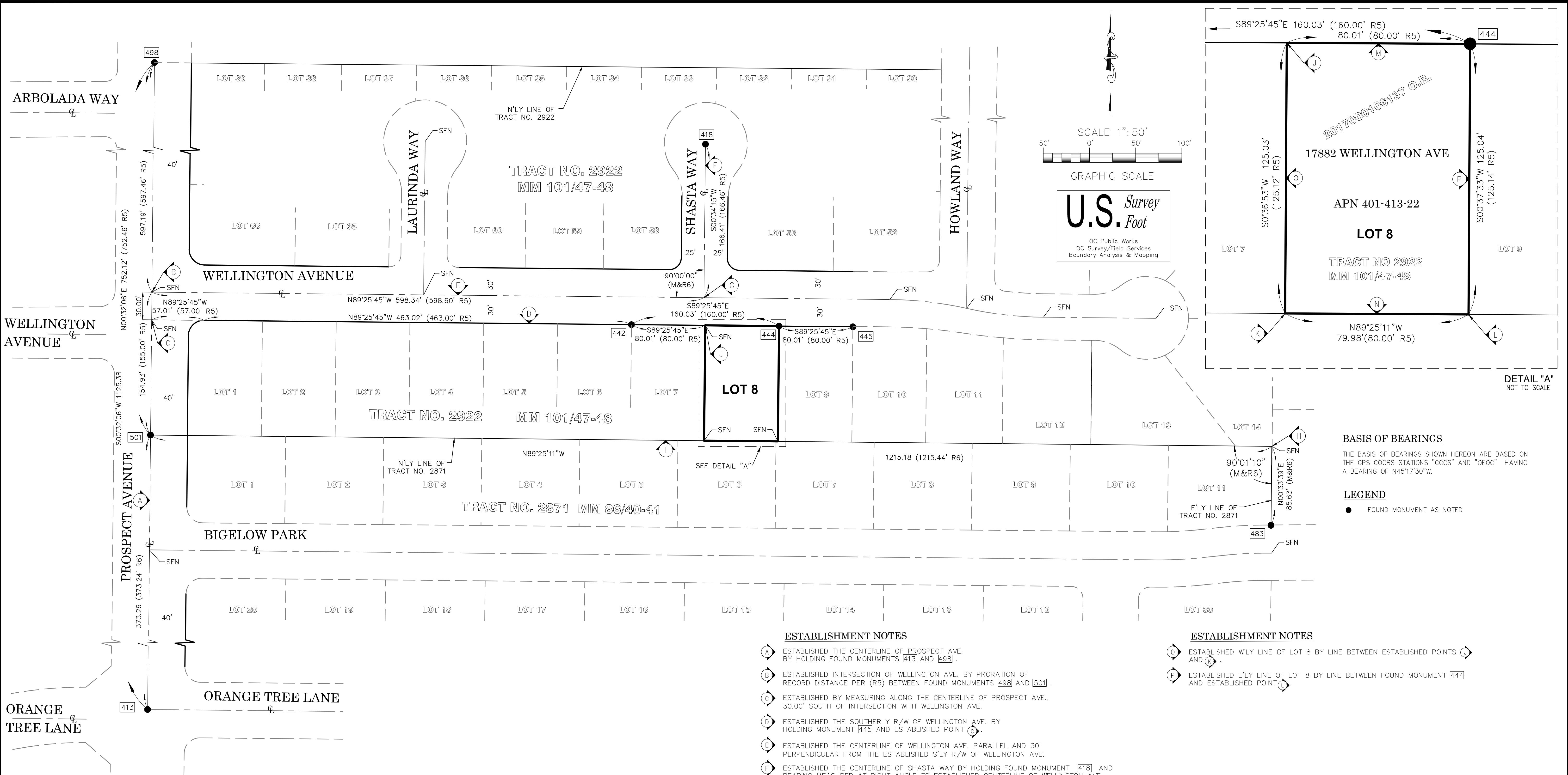
SHEET INDEX

SHEET NO.	DESCRIPTION
SHEET #1	TITLE SHEET
SHEET #2	BOUNDARY MAP
SHEET #3	TOPOGRAPHIC MAP

		COUNTY OF ORANGE OC PUBLIC WORKS OC SURVEY/FIELD SERVICES/BOUNDARY ANALYSIS & MAPPING			
		17882 WELLINGTON AVE. REPLACEMENT OF CORRUGATED METAL PIPE			
		TITLE SHEET			
		FROM: NORTH PL			
		TO: SOUTH PL			
		DATE OF SURVEY: JUNE-2019		BY: J. JOHNS AND PARTY	
		TOPOGRAPHIC MAPPING		BY: F. DADASHI	
		OFFICE CHECK		BY: J. MORENO PLS	
		FIELD CHECK		BY: J. JOHNS AND PARTY	
		SCALE: 1" = 10'		W.O. # ER19311	
FILE: WELLINGTON_AVE_TOPO_2019.DWG					
MARK	DATE	ITEM	REVISIONS		

SHEET NO. 1 of 3	

TOPOGRAPHIC MAPPING PROJECT



REFERENCES

- (R1) = CR 2015-2293B.
- (R2) = CR 2015-2270B.
- (R3) = ALIGNMENT NOTE A/5-9 PGS. 989-1000.
- (R4) = TRACT NO. 17342, MM 906/44-47.
- (R5) = TRACT NO. 2922, MM 101/47-48.
- (R6) = TRACT NO. 2871, MM 86/40-41.

HORIZONTAL DATUM

COORDINATES SHOWN HEREON ARE BASED ON THE CALIFORNIA COORDINATE SYSTEM (CCS83), ZONE VI, 1983 NORTH AMERICAN DATUM 2007.00 EPOCH D.C.S. G.P.S. ADJUSTMENT.

ALL MEASURED DISTANCES SHOWN ARE GRID, UNLESS OTHERWISE NOTED. **NOTE** THE GRID DISTANCE BY 1.00002076 TO OBTAIN GROUND DISTANCE.

THE TOBEMENTATIONS FARE OF WAS APPROVED PROSEPCATION TOMONUMENT 445.

ALL DISTANCES ARE BASED ON THE U.S. SURVEY FOOT

MONUMENT NOTES

- [413]** FOUND SPIKE (NO TAG), IN LIEU OF 1 1/2" O.C.S. BRASS TAG, DN. 0.45', ACCEPTED AS CENTERLINE INTERSECTION OF ORANGE TREE LANE AND PROSPECT PER (R3).
- [418]** FOUND GEAR SPIKE AND WASHER, STAMPED "LS 5411", FLUSH IN AC, ACCEPTED AS CENTERLINE OF SHASTA WAY PER (R1).
- [442]** FOUND 1" IP WITH TACK (NO TAG), DN. 0.2' IN DIRT PER (R5), N00°34'15"E 0.11' FROM R/W.
- [444]** FOUND 1" IP. WITH NO TACK OR TAG, DN. 0.1' IN DIRT, PER (R5), ACCEPTED AS POINT ON WELLINGTON AVE. R/W AND NE'LY CORNER OF LOT 8 PER (R5).
- [445]** FOUND 1" IP WITH TACK AND TAG (TAG ILLEGIBLE), FLUSH IN DIRT, PER (R6), ACCEPTED AS WELLINGTON AVE. R/W.
- [483]** FOUND 2" IP IN LIEU OF 3/4" IP, NO TAG, DN. 0.45' IN GRASS, ACCEPTED AS N'LY INTERSECTION OF BIGELOW PARK R/W AND E'LY LINE OF TRACT MAP PER (R6) .
- [498]** FOUND GEAR SPIKE AND WASHER, STAMPED "LS 7076", FLUSH IN AC, ACCEPTED AS WESTERLY PROLONGATION OF NORTHERLY LINE OF TRACT NO. 2922 ON CENTERLINE OF PROSPECT AVE. PER (R4).
- [501]** FOUND SPIKE (NO TAG), DN. 0.38', ACCEPTED AS WESTERLY PROLONGATION OF NORTHERLY LINE OF TRACT NO. 2871 ON CENTERLINE OF PROSPECT AVE. PER (R6).

ESTABLISHMENT NOTES

- (A)** ESTABLISHED THE CENTERLINE OF PROSPECT AVE. BY HOLDING FOUND MONUMENTS **[413]** AND **[498]** .
- (B)** ESTABLISHED INTERSECTION OF WELLINGTON AVE. BY PRORATION OF RECORD DISTANCE PER (R5) BETWEEN FOUND MONUMENTS **[498]** AND **[501]** .
- (C)** ESTABLISHED BY MEASURING ALONG THE CENTERLINE OF PROSPECT AVE., 30.00' SOUTH OF INTERSECTION WITH WELLINGTON AVE.
- (D)** ESTABLISHED THE SOUTHERLY R/W OF WELLINGTON AVE. BY HOLDING MONUMENT **[445]** AND ESTABLISHED POINT **(C)** .
- (E)** ESTABLISHED THE CENTERLINE OF WELLINGTON AVE. PARALLEL AND 30' PERPENDICULAR FROM THE ESTABLISHED S'LY R/W OF WELLINGTON AVE.
- (F)** ESTABLISHED THE CENTERLINE OF SHASTA WAY BY HOLDING FOUND MONUMENT **[418]** AND BEARING MEASURED AT RIGHT ANGLE TO ESTABLISHED CENTERLINE OF WELLINGTON AVE.
- (G)** ESTABLISHED BY INTERSECTION OF ESTABLISHED NOTES **(F)** AND **(E)** .
- (H)** ESTABLISHED:
1) THE E'LY LINE OF TRACT NO. 2871 BY PROJECTING A LINE FROM FOUND MONUMENT **[483]** ALONG THAT BEARING REFLECTS THE RECORD ANGLE OF 90°01'10" PER (R6) THROUGH MONUMENT **[501]** .
2) RECORD DISTANCE OF 85.63' HELD FROM FOUND MONUMENT **[483]** , MEASURED ALONG THE E'LY LINE OF TRACT NO. 2871 AS ESTABLISHED BY PREVIOUS NOTE.
- (I)** ESTABLISHED NORTHERLY LINE OF TRACT NO 2871 BY HOLDING MONUMENT **[501]** AND ESTABLISHED POINT **(H)** .
- (J)** ESTABLISHED NW CORNER OF LOT 8 BY PRORATION OF RECORD DISTANCE PER (R5) BETWEEN FOUND MONUMENTS **[442]** AND **[444]** .
- (K)** ESTABLISHED SW CORNER OF LOT 8 BY PRORATION OF RECORD DISTANCE PER (R5) BETWEEN FOUND MONUMENT **[501]** AND ESTABLISHED POINT **(H)** .
- (L)** ESTABLISHED SE CORNER OF LOT 8 BY PRORATION OF RECORD DISTANCE PER (R5) BETWEEN FOUND MONUMENT **[501]** AND ESTABLISHED POINT **(H)** .
- (M)** ESTABLISHED N'LY LINE OF LOT 8 ALONG ESTABLISHMENT **(D)** BETWEEN ESTABLISHED POINT **(J)** AND MONUMENT **[444]** .
- (N)** ESTABLISHED S'LY LINE OF LOT 8 ALONG ESTABLISHMENT **(I)** BETWEEN ESTABLISHED POINTS **(K)** AND **(L)** .

ESTABLISHMENT NOTES

- (O)** ESTABLISHED W'LY LINE OF LOT 8 BY LINE BETWEEN ESTABLISHED POINTS **(J)** AND **(K)** .
- (P)** ESTABLISHED E'LY LINE OF LOT 8 BY LINE BETWEEN FOUND MONUMENT **[444]** AND ESTABLISHED POINT **(I)** .

BASIS OF BEARINGS

THE BASIS OF BEARINGS SHOWN HEREON ARE BASED ON THE GPS COORS STATIONS "CCCS" AND "OEOC" HAVING A BEARING OF N45°17'30"W.











LEGEND

- FOUND MONUMENT AS NOTED

			COUNTY OF ORANGE OC PUBLIC WORKS OC SURVEY/FIELD SERVICES/BOUNDARY ANALYSIS & MAPPING		
			17882 WELLINGTON AVE REPLACEMENT OF CORRUGATED METAL PIPE		
			BOUNDARY ANALYSIS		
			FROM: NORTH PL		
			TO: SOUTH PL		
		DATE OF SURVEY: JUNE 2019	BY: JOHNS & PARTY	SHEET NO. 2 of 3	
		SEARCH MAPPING	BY: J. MORENO, DADASHI		
		OFFICE CHECK	BY: J. MORENO, PLS		
		FIELD CHECK	BY: JOHNS & PARTY		
MARK	DATE	ITEM		SCALE: 1" = 50'	W.O. #ER19311
			REVISIONS	FILE:WELLINGTON_AVE_BOUNDARY_2019	

[illegible]

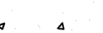

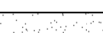


SYMBOL

-  Gate - Wood
-  Manhole Storm Drain
-  Meter Water
-  Yard Light
-  Post
-  Pilaster
-  Tree
-  SPRINKLER
-  IRRIGATION STAND PIPE
-  HOSE BIB

LINE PATTERN KEY

- | | |
|--|--------------------------|
| | Building Outline |
| | Edge of Conc |
| | Edge of Asphalt Pavement |
| | Flowline |
| | Plastic Fence |
| | Wood Fence |

AREA PATTERN KEY

- | | |
|---|------------------|
|  | Concrete |
|  | Dirt |
|  | Grass |
|  | BRICK WALKWAY |
|  | WALL BLOCK CONC. |



SCALE: 1" = 10'

U.S. *Survey*
Foot

OC Public Works
OC Survey/Field Services
Boundary Analysis & Mapping

<div style="display: flex; flex-direction: column; align-items: center;"> <div style="margin-bottom: 10px;"> <div style="border: 1px solid black; width: 40px; height: 40px; margin-bottom: 5px;"></div> <div style="border: 1px solid black; width: 40px; height: 40px; margin-bottom: 5px;"></div> <div style="border: 1px solid black; width: 40px; height: 40px;"></div> </div> <div style="margin-bottom: 10px;"> <div style="border: 1px solid black; width: 40px; height: 40px; margin-bottom: 5px;"></div> <div style="border: 1px solid black; width: 40px; height: 40px; margin-bottom: 5px;"></div> <div style="border: 1px solid black; width: 40px; height: 40px;"></div> </div> <div> <div style="border: 1px solid black; width: 40px; height: 40px; margin-bottom: 5px;"></div> <div style="border: 1px solid black; width: 40px; height: 40px; margin-bottom: 5px;"></div> <div style="border: 1px solid black; width: 40px; height: 40px;"></div> </div> </div>	COUNTY OF ORANGE OC PUBLIC WORKS OC SURVEY/FIELD SERVICES/BOUNDARY ANALYSIS & MAPPING		17882 WELLINGTON AVE REPLACEMENT OF CORRUGATED METAL PIPE		SHEET NO. 3 of 3
			TOPOGRAPHIC MAP		
			FROM: NORTH PL		
			TO: SOUTH PL		
			DATE OF SURVEY: JUNE - 2019	BY: J. JOHNS AND PARTY	
			TOPOGRAPHIC MAPPING	BY: F. DADASHI	
			OFFICE CHECK	BY: J. MORENO PLS	
			FIELD CHECK	BY: J. JOHNS AND PARTY	
			SCALE: 1" = 10'	W.O. # ER19311	
	REVISIONS		FILE: WELLINGTON_AVE_TOPO_2019.DWG		