

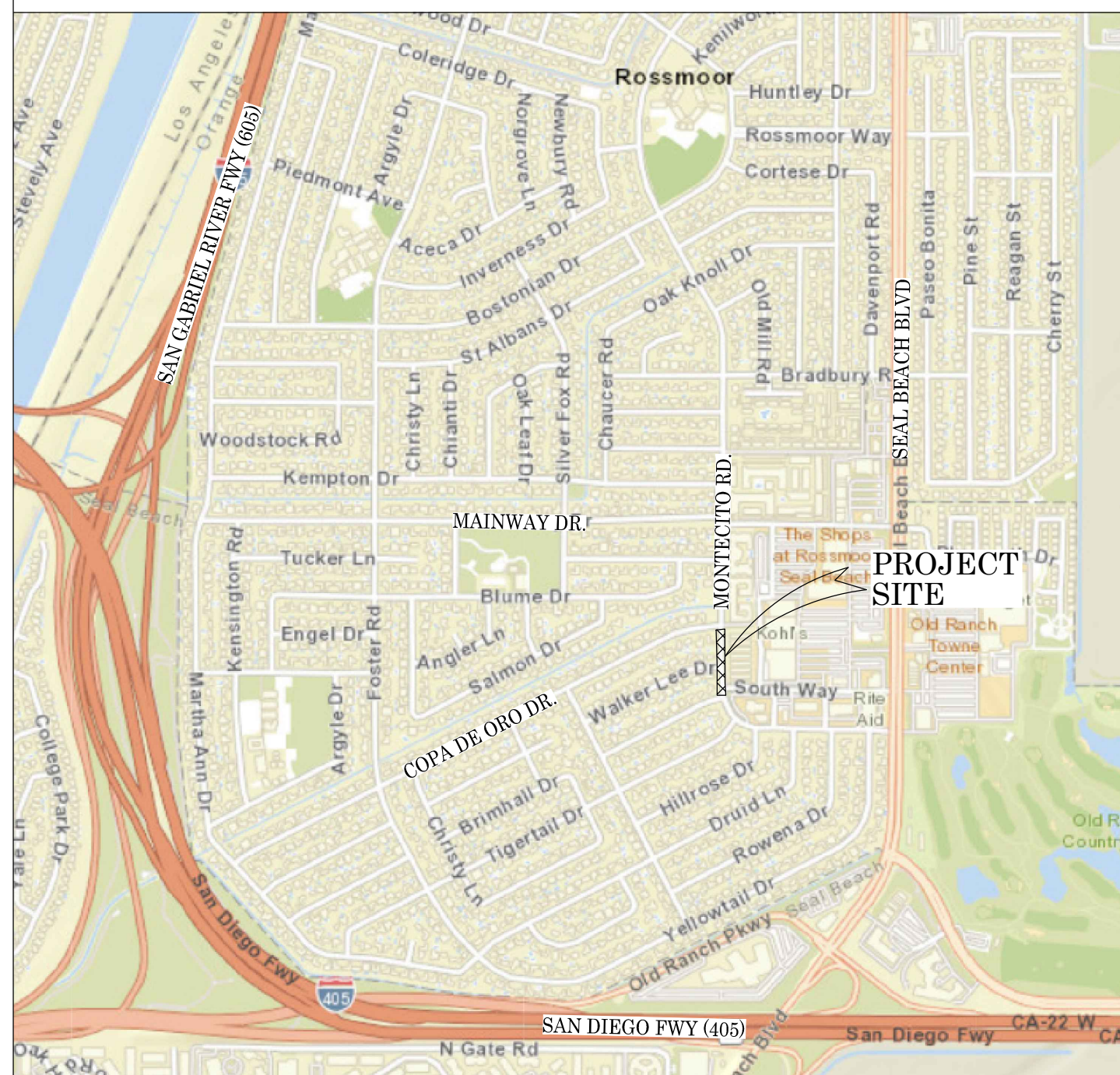


OC PUBLIC WORKS DEPARTMENT
JAMES TREADAWAY, DIRECTOR OF PUBLIC WORKS
KEVIN HILLS, COUNTY SURVEYOR
WALKER LEE



ROAD MAINTENANCE

LOCATION MAP



FOUND CGPS "LBC1"
N: 2251578.40'
E: 5988579.34'
THIS IS A CONTINUOUS GPS STATION (CGPS) AND IS PART OF THE CALIFORNIA SPATIAL REFERENCE NETWORK (CSRN), FROM WHICH DATA CAN BE DOWNLOADED HERE: [HTTP://SOPACCSRC.UCSD.EDU/](http://SOPACCSRC.UCSD.EDU/).



BASIS OF BEARINGS

THE BASIS OF BEARINGS FOR THIS SURVEY IS BASED ON THE CALIFORNIA COORDINATE SYSTEM (CCS83), ZONE VI, NAD 83, OCS (2017.50) EPOCH ADJUSTMENT, AS DETERMINED LOCALLY BY A LINE BETWEEN CONTINUOUS GLOBAL POSITIONING STATIONS CGPS STATIONS (BLSA) AND (LBC1) BEING NORTH 69°14'17" WEST AS DERIVED FROM THE COORDINATES PUBLISHED BY THE CALIFORNIA SPATIAL REFERENCE CENTER (CSRNC) ALONG WITH DATA SHEETS ON FILE IN THE OFFICE OF THE ORANGE COUNTY SURVEYOR.

HORIZONTAL DATUM

COORDINATES SHOWN ARE BASED ON THE CALIFORNIA COORDINATE SYSTEM (CCS83), ZONE VI, NAD 83, OCS (2017.50) EPOCH ADJUSTMENT.
ALL DISTANCES SHOWN ARE GRID, UNLESS OTHERWISE NOTED. TO OBTAIN GROUND DISTANCES MULTIPLY GRID BY A COMBINED FACTOR OF 1.00001089.
COMBINATION FACTOR WAS HELD AT: #252
N: 2232760.41' E: 6006776.86' ELEVATION= 12.61'

VERTICAL DATUM

O.C.S. BM. 1A-144-04 ELEV. = 15.370' YEAR LEVELED: 2005
NAVD 1988 (O.C.S. 1995 ADJUSTMENT)
FOUND 3 3/4" OCS ALUMINUM BENCHMARK DISK STAMPED "1A-144-04", SET IN THE SOUTHWESTERLY CORNER OF A 4.4 FT. BY 4.4 FT. CONCRETE CATCH BASIN. MONUMENT IS LOCATED IN THE NORTHEASTERLY CORNER OF THE INTERSECTION OF SEAL BEACH BOULEVARD AND ST. CLOUD DRIVE, 44 FT. EASTERLY OF THE CENTERLINE OF SEAL BEACH BOULEVARD AND 58 FT. NORTHERLY OF THE CENTERLINE OF ST. CLOUD DR. MONUMENT IS SET LEVEL WITH THE SIDEWALK

NOTES

THE SURVEY INFORMATION SHOWN HEREON IS TO BE USED FOR TOPOGRAPHIC RELATIONSHIPS ONLY AND IS NOT INTENDED FOR LAND ACQUISITION OR BOUNDARY PURPOSES.
PARCELS SHOWN WITHOUT BEARING AND DISTANCES ARE FOR GRAPHICAL PURPOSES.

SHEET INDEX

SHEET	NO.	DESCRIPTION
1	1	TITLE SHEET
2-3	2-3	BOUNDARY
4	4	TOPOGRAPHIC MAP
5	5	PROFILE

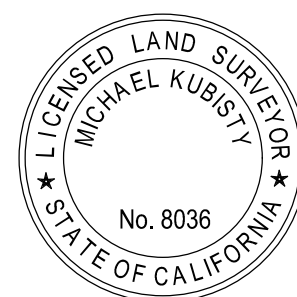
PURPOSE OF SURVEY

THE PURPOSE OF THE SURVEY IS TO PROVIDE A TOPOGRAPHIC SURVEY ALONG THIS PORTION OF ROAD TO IDENTIFY LOW AND HIGH GRADE POINTS WITHIN ROAD CURB AND GUTTER FLOW LINE.

SENIOR LAND SURVEYOR'S CERTIFICATE:

THIS MAP CORRECTLY REPRESENTS A SURVEY MADE BY ME OR UNDER MY DIRECTION IN CONFORMANCE WITH REQUIREMENTS OF THE PROFESSIONAL LAND SURVEYOR'S ACT; ON THIS 2 DAY OF JUNE, 2021.

MICHAEL KUBISTY, PLS. SENIOR LAND SURVEYOR



DEPUTY COUNTY SURVEYOR'S STATEMENT:

THIS MAP HAS BEEN EXAMINED IN ACCORDANCE WITH THE PROFESSIONAL LAND SURVEYOR'S ACT; ON THIS 10TH DAY 2 DAY OF JUNE, 2021.

WADE WEAVER, PLS. DEPUTY COUNTY SURVEYOR



TOPOGRAPHIC MAPPING PROJECT

COUNTY OF ORANGE OC PUBLIC WORKS OC SURVEY/FIELD SERVICES/BOUNDARY ANALYSIS & MAPPING			
WALKER LEE ROAD MAINTENANCE			
TITLE SHEET			
PROJECT LIMITS: FROM 3272 BRIMHALL DR. 3272 COPA DE ORO DR.			
DATE OF SURVEY: 02/10/2021		BY: J. RUSSO & CREW	
MAPPING		BY: L. ISLAS	
OFFICE CHECK		BY: M. KUBISTY, PLS.	
FIELD CHECK		BY: J. RUSSO	
SCALE: N.T.S.		W.O. #E19202	FILE #1920PW-OP0024
FILE: WALKER LEE_TOPO_2020.DWG			
MARK	DATE	ITEM	
REVISIONS			
			SHEET NO. 1 of 5

MONUMENT NOTES

(MONUMENTS ARE HYPERLINKED IN DRAWING SEE SHEET 3)

- 1

FOUND SPIKE AND WASHER STAMPED "O.C.S.", PER (R3), DOWN 0.1' IN AC. ACCEPTED AS CENTERLINE INTERSECTION OF COPA DE ORO DR. AND MONTECITO RD.
- 2

FOUND SPIKE AND WASHER STAMPED "O.C.S.", PER (R2), DOWN 0.1' IN AC. ACCEPTED AS CENTERLINE E.C. OF MONTECITO DR.
- 3

FOUND NAIL SHAFT IN LIEU OF LEAD, TACK AND TAG STAMPED "LS 2383" PER (R1), IN TOP OF CURB. ACCEPTED AS 11.75' OFFSET TO SE'LY RIGHT OF WAY AND A CALCULATED 18.25' OFFSET TO THE CENTERLINE OF WALKER LEE DR. PER (R1).
- 4

FOUND CHISELED "+" IN LIEU OF LEAD, TACK AND TAG STAMPED "LS 2383" PER (R1), IN TOP OF CURB. S88°46'56"E 0.05' FROM 9.75' OFFSET TO THE W'LY RIGHT OF WAY OF MONTECITO RD. PER (R1).
- 5

FOUND CHISELED "+" IN LIEU OF LEAD, TACK AND TAG STAMPED "LS 2383" PER (R1), IN TOP OF CURB. ACCEPTED AS 9.75' OFFSET TO W'LY RIGHT OF WAY AND A CALCULATED 30.25' OFFSET TO THE CENTERLINE OF MONTECITO RD. PER (R1).
- 6

FOUND SURVEY MARK SPIKE AND WASHER STAMPED "O.C.S." PER (R5), FLUSH IN AC. ACCEPTED AS CENTERLINE INTERSECTION OF SILVER FOX RD. AND BRIMHALL DR.
- 7

FOUND SPIKE AND WASHER STAMPED "O.C.S." PER (R6), FLUSH IN AC. ACCEPTED AS CENTERLINE B.C. OF WALKER LEE DR.
- 8

FOUND NAIL SHAFT IN LIEU OF LEAD, TACK AND TAG STAMPED "LS 2383" PER (R1), IN TOP OF CURB. N07°54'10"W 0.11' FROM 11.75' OFFSET TO S'LY RIGHT OF WAY OF COPA DE ORO DR. PER (R1).
- 9

FOUND NAIL SHAFT IN LIEU OF LEAD, TACK AND TAG STAMPED "LS 2383" PER (R1), IN TOP OF CURB. ACCEPTED AS 11.75' OFFSET TO S'LY RIGHT OF WAY AND A CALCULATED 18.25' OFFSET TO THE CENTERLINE OF COPA DE ORO DR. PER (R1).
- 10

FOUND NAIL SHAFT IN LIEU OF LEAD, TACK AND TAG STAMPED "LS 2383" PER (R1), IN TOP OF CURB. ACCEPTED AS 11.75' OFFSET TO N'LY RIGHT OF WAY AND A CALCULATED 18.25' OFFSET TO THE CENTERLINE OF COPA DE ORO DR. PER (R1).
- 11

FOUND NAIL SHAFT IN LIEU OF LEAD, TACK AND TAG STAMPED "LS 2383" PER (R1), IN TOP OF CURB. ACCEPTED AS 11.75' OFFSET TO THE NW'LY RIGHT OF WAY AND A CALCULATED 18.25' OFFSET TO THE CENTERLINE OF COPA DE ORO DR. PER (R1).
- 12

FOUND LEAD, TACK AND TAG STAMPED "LS 5203" (NO REF.) IN LIEU OF LEAD, TACK AND TAG STAMPED "LS 2383" PER (R1), IN TOP OF CURB. ACCEPTED AS 11.75' OFFSET TO N'LY RIGHT OF WAY AND A CALCULATED 18.25' OFFSET TO THE CENTERLINE OF COPA DE ORO DR. PER (R1).
- 13

FOUND LEAD AND TAG STAMPED "LS 2383" PER (R1), IN TOP OF CURB. ACCEPTED AS 11.75' OFFSET TO NW'LY RIGHT OF WAY AND A CALCULATED 18.25' OFFSET TO THE CENTERLINE OF COPA DE ORO DR. PER (R1).
- 14

FOUND NAIL SHAFT IN LIEU OF LEAD, TACK AND TAG STAMPED "LS 2383" PER (R1), IN TOP OF CURB. ACCEPTED AS 11.75' OFFSET TO THE NW'LY RIGHT OF WAY AND A CALCULATED 18.25' OFFSET TO THE CENTERLINE OF COPA DE ORO DR. PER (R1).
- 15

FOUND NAIL SHAFT IN LIEU OF LEAD, TACK AND TAG STAMPED "LS 2383" PER (R1), IN TOP OF CURB. ACCEPTED AS 11.75' OFFSET TO SE'LY RIGHT OF WAY AND A CALCULATED 18.25' OFFSET TO THE CENTERLINE OF WALKER LEE DR. PER (R1).
- 16

FOUND NAIL SHAFT IN LIEU OF LEAD, TACK AND TAG STAMPED "LS 2383" PER (R1), IN TOP OF CURB. ACCEPTED AS 11.75' OFFSET TO SE'LY RIGHT OF WAY AND A CALCULATED 18.25' OFFSET TO THE CENTERLINE OF WALKER LEE DR. PER (R1).
- 17

FOUND NAIL SHAFT IN LIEU OF LEAD, TACK AND TAG STAMPED "LS 2383" PER (R1), IN TOP OF CURB. S26°17'23"E 0.15' FROM 11.75' OFFSET TO THE NW'LY RIGHT OF WAY OF WALKER LEE DR. PER (R1).
- 18

FOUND NAIL SHAFT IN LIEU OF LEAD, TACK AND TAG STAMPED "LS 2383" PER (R1), IN TOP OF CURB. ACCEPTED AS 11.75' OFFSET TO NW'LY RIGHT OF WAY AND A CALCULATED 18.25' OFFSET TO THE CENTERLINE OF WALKER-LEE DR. PER (R1).
- 19

FOUND NAIL SHAFT IN LIEU OF LEAD, TACK AND TAG STAMPED "LS 2383" PER (R1), IN TOP OF CURB. ACCEPTED AS 11.75' OFFSET TO NW'LY RIGHT OF WAY AND A CALCULATED 18.25' OFFSET TO THE CENTERLINE OF WALKER-LEE DR. PER (R1).
- 20

FOUND MAG NAIL (NO TAG) PER (R4), FLUSH IN AC. ACCEPTED AS CENTERLINE INTERSECTION OF SILVER FOX RD. AND WALKER LEE DR.
- 21

FOUND NAIL SHAFT IN LIEU OF LEAD, TACK AND TAG STAMPED "LS 2383" PER (R1), IN TOP OF CURB. ACCEPTED AS 11.75' OFFSET TO NW'LY RIGHT OF WAY AND A CALCULATED 18.25' OFFSET TO THE CENTERLINE OF BRIMHALL DR. PER (R1).
- 22

FOUND NAIL SHAFT IN LIEU OF LEAD, TACK AND TAG STAMPED "LS 2383" PER (R1), IN TOP OF CURB. ACCEPTED AS 11.75' OFFSET TO SE'LY RIGHT OF WAY AND A CALCULATED 18.25' OFFSET TO THE CENTERLINE OF BRIMHALL DR. PER (R1).
- 23

FOUND NAIL SHAFT IN LIEU OF LEAD, TACK AND TAG STAMPED "LS 2383" PER (R1), IN TOP OF CURB. ACCEPTED AS 11.75' OFFSET TO N'LY RIGHT OF WAY AND A CALCULATED 18.25' OFFSET TO THE CENTERLINE OF BRIMHALL DR. PER (R1).
- 24

FOUND NAIL SHAFT IN LIEU OF LEAD, TACK AND TAG STAMPED "LS 2383" PER (R1), IN TOP OF CURB. S26°17'26"E 0.11' FROM 11.75' OFFSET TO SE'LY RIGHT OF WAY OF BRIMHALL DR. PER (R1).
- 25

FOUND CHISELED "+" IN LIEU OF LEAD, TACK AND TAG STAMPED "LS 2383" PER (R1), IN TOP OF CURB. ACCEPTED AS 11.75' OFFSET TO N'LY RIGHT OF WAY AND A CALCULATED 18.25' OFFSET TO THE CENTERLINE OF BRIMHALL DR. PER (R1).
- 26

FOUND CHISELED "+" IN LIEU OF LEAD, TACK AND TAG STAMPED "LS 2383" PER (R1), IN TOP OF CURB. ACCEPTED AS 11.75' OFFSET TO S'LY RIGHT OF WAY AND A CALCULATED 18.25' OFFSET TO THE CENTERLINE OF BRIMHALL DR. PER (R1).
- 28

FOUND NAIL SHAFT IN LIEU OF LEAD, TACK AND TAG STAMPED "LS 2383" PER (R1), IN TOP OF CURB. ACCEPTED AS 11.75' OFFSET TO SE'LY RIGHT OF WAY AND A CALCULATED 18.25' OFFSET TO THE CENTERLINE OF BRIMHALL DR. PER (R1).
- 29

FOUND NAIL SHAFT IN LIEU OF LEAD, TACK AND TAG STAMPED "LS 2383" PER (R1), IN TOP OF CURB. ACCEPTED AS 11.75' OFFSET TO NW'LY RIGHT OF WAY AND A CALCULATED 18.25' OFFSET TO THE CENTERLINE OF BRIMHALL DR. PER (R1).

ESTABLISHMENT NOTES

- Ⓐ

SEARCHED FOUND NOTHING, ESTABLISHED THE CENTERLINE INTERSECTION OF COPA DE ORO DR. AND SILVER FOX RD. BY THE INTERSECTION OF ESTABLISHMENT [1](#) AND THE SW'LY PROLONGATION OF LINE ESTABLISHMENT [6](#) PER (R1).
- Ⓑ

ESTABLISHED THE CENTERLINE OF MONTECITO RD. HOLDING A LINE BETWEEN MONUMENTS [1](#) AND [2](#) FITS MONUMENT [5](#) PER (R1).
- Ⓒ

ESTABLISHED THE CENTERLINE OF COPA DE ORO DR. BY HOLDING RECORD ANGLE PER (R1), AT MONUMENT [1](#) W'LY FROM LINE ESTABLISHMENT [6](#)
- Ⓓ

ESTABLISHED 11.75' OFFSET LINE TO THE NW'LY RIGHT OF WAY OF COPA DE ORO DR. PER (R1), HOLDING A LINE BETWEEN MONUMENTS [12](#) AND [14](#). FITS MONUMENTS [11](#) AND [13](#) PER (R1).
- Ⓔ

ESTABLISHED A POINT ON THE CENTERLINE OF COPA DE ORO RD. HOLDING A CALCULATED RECORD OFFSET DISTANCE OF 18.25' PER (R1), PERPENDICULAR TO LINE ESTABLISHMENT [10](#) AT MONUMENT [12](#)
- Ⓕ

ESTABLISHED A POINT ON THE CENTERLINE OF COPA DE ORO RD. HOLDING A CALCULATED RECORD OFFSET DISTANCE OF 18.25' PER (R1), PERPENDICULAR TO LINE ESTABLISHMENT [10](#) AT MONUMENT [14](#)
- Ⓖ

ESTABLISHED THE CENTERLINE OF COPA DE ORO DR. BY HOLDING A LINE BETWEEN ESTABLISHMENTS [Ⓔ](#) AND [Ⓕ](#) PER (R1).
- Ⓗ

ESTABLISHED THE CENTERLINE OF COPA DE ORO DR. HOLDING RECORD RADIUS PER (R1), AND TANGENT TO ESTABLISHMENT [Ⓒ](#) AND THE NE'LY PROLONGATION OF ESTABLISHMENT [Ⓒ](#), FITS MONUMENTS [9](#) AND [10](#) PER (R1).
- Ⓘ

ESTABLISHED THE CENTERLINE OF SILVER FOX DR. BY HOLDING A LINE BETWEEN MONUMENTS [20](#) AND [6](#)
- ⓫

ESTABLISHED THE CENTERLINE OF SILVER FOX RD. BY HOLDING THE NW'LY PROLONGATION OF ESTABLISHMENT [Ⓘ](#) FROM MONUMENT [20](#) TO THE INTERSECTION OF THE SW'LY PROLONGATION OF ESTABLISHMENT [Ⓒ](#)
- Ⓚ

ESTABLISHED 11.75' OFFSET LINE TO THE NW'LY RIGHT OF WAY OF WALKER-LEE DR. PER (R1), HOLDING MONUMENTS [15](#) AND [18](#) PER (R1).
- Ⓛ

ESTABLISHED A POINT ON THE CENTERLINE OF WALKER-LEE DR. HOLDING A CALCULATED RECORD OFFSET DISTANCE OF 18.25' PER (R1), PERPENDICULAR TO LINE ESTABLISHMENT [Ⓚ](#) AT MONUMENT [18](#)
- Ⓜ

ESTABLISHED THE CENTERLINE OF WALKER LEE DR. BY HOLDING A LINE BETWEEN MONUMENT [20](#) AND ESTABLISHMENT [Ⓘ](#) FITS MONUMENTS [16](#) PER (R1).
- Ⓝ

ESTABLISHED THE CENTERLINE OF WALKER-LEE DR. BY HOLDING A RECORD RADIUS PER (R1), AND TANGENT TO LINE ESTABLISHMENTS [Ⓜ](#) AND [Ⓒ](#) FITS OFFSET MONUMENTS [3](#) AND [19](#) PER (R1).
- Ⓞ

ESTABLISHED THE CENTERLINE OF WALKER-LEE DR. BY HOLDING A LINE BETWEEN ESTABLISHMENT [Ⓕ](#) AND MONUMENT [7](#)
- Ⓖ

ESTABLISHED THE CENTERLINE INTERSECTION OF WALKER-LEE DR. AND MONTECITO RD. HOLDING A LINE E'LY FROM MONUMENT [7](#) AND INTERSECTING PERPENDICULAR TO LINE ESTABLISHMENT [Ⓔ](#)
- Ⓞ

ESTABLISHED THE CENTERLINE OF MONTECITO RD. BY HOLDING RECORD RADIUS PER (R1), SE'LY FROM MONUMENT [2](#) AND TANGENT TO ESTABLISHMENT [Ⓔ](#)
- Ⓕ

ESTABLISHED 11.75' OFFSET LINE TO THE SE'LY RIGHT OF WAY OF BRIMHALL DR. PER (R1), HOLDING MONUMENTS [22](#) AND [28](#)
- Ⓢ

ESTABLISHED A POINT ON THE CENTERLINE OF BRIMHALL DR. HOLDING A CALCULATED RECORD OFFSET DISTANCE OF 18.25' PER (R1), PERPENDICULAR TO LINE ESTABLISHMENT [Ⓕ](#) AT MONUMENT [28](#)
- Ⓘ

ESTABLISHED THE CENTERLINE OF BRIMHALL RD. BY HOLDING A LINE BETWEEN MONUMENT [6](#) AND ESTABLISHMENT [Ⓢ](#), FITS MONUMENTS [21](#) PER (R1).
- Ⓘ

ESTABLISHED THE CENTERLINE OF BRIMHALL RD. BY HOLDING RECORD RADIUS PER (R1), AND TANGENT TO THE NE'LY PROLONGATION OF LINE ESTABLISHMENTS [Ⓘ](#) AND [Ⓖ](#)
- Ⓥ

ESTABLISHED THE CENTERLINE OF BRIMHALL RD. BY HOLDING A LINE BETWEEN ESTABLISHMENTS [Ⓥ](#) AND [Ⓐ](#)
- Ⓥ

ESTABLISHED THE CENTERLINE INTERSECTION OF MONTECITO DR. AND BRIMHALL DR. HOLDING RECORD CURVATURE INFORMATION SE'LY FROM MONUMENT [2](#) AND TANGENT TO LINE ESTABLISHMENT [Ⓔ](#)
- Ⓧ

ESTABLISHED THE W'LY RIGHT OF WAY OF MONTECITO RD. BY HOLDING A RECORD DISTANCE OF 40' PER (R1), W'LY OF AND PARALLEL WITH LINE ESTABLISHMENT [Ⓔ](#)
- Ⓥ

ESTABLISHED THE S'LY RIGHT OF WAY OF COPA DE ORO DR. BY HOLDING A RECORD DISTANCE OF 30' PER (R1), S'LY OF AND PARALLEL WITH LINE ESTABLISHMENT [Ⓖ](#)
- Ⓔ

ESTABLISHED THE SW'LY RIGHT OF WAY OF COPA DE ORO DR. AND MONTECITO RD. BY HOLDING RECORD A RADIUS PER (R1) AND TANGENT TO LINE ESTABLISHMENTS [Ⓧ](#) AND [Ⓥ](#)

- Ⓐ

ESTABLISHED THE N'LY RIGHT OF WAY OF WALKER-LEE DR. BY HOLDING A RECORD DISTANCE OF 30' PER (R1), N'LY OF AND PARALLEL WITH LINE ESTABLISHMENT [Ⓖ](#)
- Ⓐ

ESTABLISHED THE NW'LY RIGHT OF WAY OF WALKER-LEE DR. AND MONTECITO RD. BY HOLDING A RECORD RADIUS OF PER (R1), AND TANGENT WITH LINE ESTABLISHMENTS [Ⓧ](#) AND [Ⓐ](#)
- Ⓐ

ESTABLISHED THE S'LY RIGHT OF WAY OF WALKER-LEE DR. BY HOLDING A RECORD DISTANCE OF 30' PER (R1), S'LY OF AND PARALLEL WITH LINE ESTABLISHMENT [Ⓖ](#)
- Ⓐ

ESTABLISHED THE SW'LY RIGHT OF WAY OF WALKER-LEE DR. AND MONTECITO RD. BY HOLDING A RECORD RADIUS PER (R1), AND TANGENT TO LINE ESTABLISHMENTS [Ⓧ](#) AND [Ⓐ](#)
- Ⓐ

ESTABLISHED THE N'LY RIGHT OF WAY OF BRIMHALL DR. BY HOLDING A RECORD DISTANCE OF 30' PER (R1), N'LY OF AND RADIAL WITH LINE ESTABLISHMENT [Ⓘ](#)
- Ⓐ

ESTABLISHED THE NW'LY RIGHT OF WAY OF BRIMHALL DR. AND MONTECITO RD. BY HOLDING A RECORD RADIUS PER (R1), AND TANGENT TO LINE ESTABLISHMENTS [Ⓧ](#) AND [Ⓐ](#)
- Ⓐ

ESTABLISHED THE CENTERLINE BC OF COPA DE ORO DR. BY HOLDING A RECORD RADIUS PER (R1) AND TANGENT TO ESTABLISHMENT [Ⓕ](#) AND THE NE'LY PROLONGATION OF ESTABLISHMENTS [Ⓖ](#) AND [Ⓒ](#)
- Ⓐ

ESTABLISHED THE CENTERLINE EC OF COPA DE ORO DR. BY HOLDING A RECORD RADIUS PER (R1) AND TANGENT TO ESTABLISHMENT [Ⓖ](#) AND THE NE'LY PROLONGATION OF LINE ESTABLISHMENT [Ⓖ](#)
- Ⓐ

ESTABLISHED THE CENTERLINE BC OF WALKER LEE DR. BY HOLDING A RECORD RADIUS PER (R1) AND TANGENT TO ESTABLISHMENT [Ⓖ](#) AND THE NE'LY PROLONGATION OF ESTABLISHMENT [Ⓥ](#)
- Ⓐ

ESTABLISHED THE CENTERLINE EC OF BRIMHALL DR. HOLDING THE MIDPOINT OF A LINE BETWEEN MONUMENTS [25](#) AND [26](#)
- Ⓐ

ESTABLISHED THE CENTERLINE BC OF BRIMHALL DR. BY HOLDING A RECORD RADIUS PER (R1) AND TANGENT TO THE NE'LY PROLONGATION OF LINE ESTABLISHMENT [Ⓘ](#) AND LINE ESTABLISHMENT [Ⓥ](#)

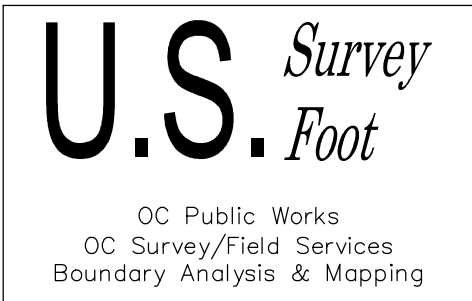
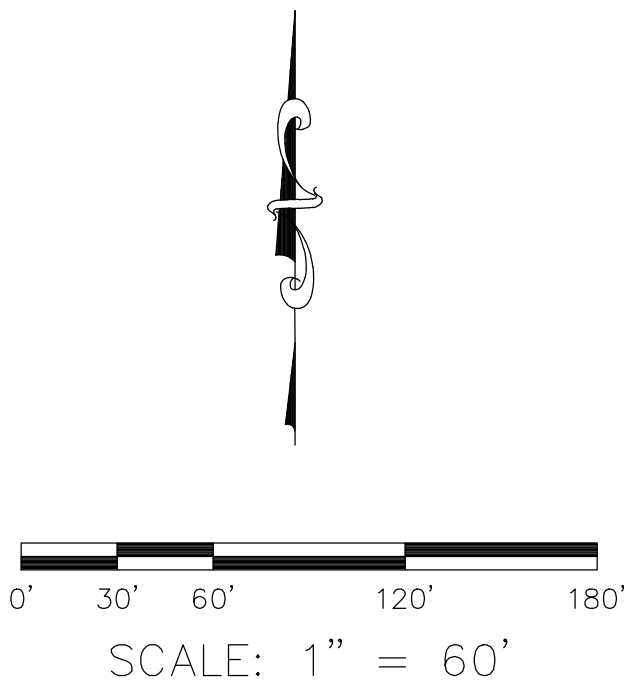
REFERENCES

(REFERENCED DOCUMENTS ARE HYPERLINKED)
(R1) = TRACT MAP 3224, M.M. 106/21-29
(R2) = CORNER RECORD, C.R. 2020-2835
(R3) = CORNER RECORD, C.R. 2020-2836
(R4) = CORNER RECORD, C.R. 2001-0524
(R5) = CORNER RECORD, C.R. 2001-0529
(R6) = O.C.S. ALIGNMENT NOTE A/4-11&12, PGS. 1116-1132

			COUNTY OF ORANGE OC PUBLIC WORKS OC SURVEY/FIELD SERVICES/BOUNDARY ANALYSIS & MAPPING		
			3272 WALKER LEE DR. STREET IMPROVEMENTS		
			BOUNDARY MAP		
			PROJECT LIMITS: FROM 3272 BRIMHALL DR 3272 COPA DE ORO DR		
MARK	DATE	ITEM	DATE OF SURVEY:02/10/2021	BY:J. RUSSO & CREW	SHEET NO. 2 of 5
			MAPPING	BY:S. STROM	
			OFFICE CHECK	BY:M. KUBISTY, PLS	
			FIELD CHECK	BY:J. RUSSO & CREW	
			SCALE: 1" = 60'	W.O. #ER19202	
REVISIONS			FILE: 3272 WALKER LEE_BOUNDARY_2020.DWG		

CURVE TABLE						
CURVE #	DELTA	RADIUS	LENGTH	RECORD DELTA	RECORD RADIUS	RECORD LENGTH
C1	27°30'54"	672.49'	322.95'	27°30'26" (R1)	672.50' (R1)	322.86' (R1)
C2	27°30'25"	393.00'	188.67'	27°30'25" (R1)	393.00' (R1)	188.68' (R1)
C3	16°02'32"	330.00'	92.40'	16°01'24" (R1)	330.00' (R1)	92.29' (R1)
C4	11°29'05"	300.00'	60.13'	11°29'02" (R1)	300.00' (R1)	60.13' (R1)
C5	90°00'00"	15.00'	23.56'	90°00'00" (R1)	15.00' (R1)	23.56' (R1)
C6	90°00'00"	15.00'	23.56'	90°00'00" (R1)	15.00' (R1)	23.56' (R1)
C7	90°00'00"	15.00'	23.56'	90°00'00" (R1)	15.00' (R1)	23.56' (R1)
C8	4°12'06"	339.99'	24.93'	4°12'05" (R1)	340.00' (R1)	24.93' (R1)
C9	82°30'13"	15.00'	21.60'	82°43'03" (R1)	15.00' (R1)	21.66' (R1)
C10	16°02'57"	360.00'	100.84'	16°01'24" (R1)	360.00' (R1)	100.68' (R1)
C11	7°16'59"	300.00'	38.13'			

LINE TABLE			
LINE #	BEARING	MEASURED DISTANCE	RECORD DISTANCE
L1	N88°46'58"W	115.21'	(115.00' R1)
L2	N88°46'58"W	115.53'	(115.46' R1)
L3	N79°45'20"E	52.09'	(52.14' R1)
L4	N26°17'52"W	18.25'	(18.25' R1)
L5	N63°42'08"E	34.94'	(35.00' R1)
L6	N26°17'52"W	18.25'	(18.25' R1)
L7	N26°17'12"W	18.25'	(18.25' R1)
L8	N26°52'49"W	18.25'	(18.25' R1)
L9	N26°17'12"W	18.25'	(18.25' R1)
L10	N26°17'23"W	18.25'	(18.25' R1)
L11	N88°46'58"W	60.21'	(60.00' R1)
L12	N01°13'02"E	190.02'	(190.00' R1)
L13	N88°46'58"W	60.53'	(60.46' R1)
L14	N88°46'58"W	60.53'	(60.46' R1)
L15	N01°13'02"E	127.71'	(127.69' R1)
L16	N10°15'14"W	30.00'	(30.00' R1)
L17	N10°15'14"W	30.00'	(30.00' R1)
L18	N87°00'57"E	40.00'	(40.00' R1)
L19	N88°46'58"W	40.00'	(40.00' R1)
L20	N01°13'17"E	30.04'	(30.00' R1)
L21	N01°13'17"E	30.04'	(30.00' R1)
L22	N88°46'58"W	40.00'	(40.00' R1)
L23	N88°46'29"W	40.00'	(40.00' R1)
L24	N01°13'02"E	30.00'	(30.00' R1)
L25	N01°13'02"E	45.00'	
L26	N01°13'02"E	45.00'	
L27	S01°13'02"W	45.00'	



LEGEND

- FOUND MONUMENT AS NOTED
- ⊗ SEARCHED NOT FOUND



REFERENCES

- (REFERENCED DOCUMENTS ARE HYPERLINKED)
- (R1) = TRACT MAP 3224, M.M. 106/21-29
(R2) = CORNER RECORD, C.R. 2020-2835
(R3) = CORNER RECORD, C.R. 2020-2836
(R4) = CORNER RECORD, C.R. 2001-0524
(R5) = CORNER RECORD, C.R. 2001-0529
(R6) = O.C.S. ALIGNMENT NOTE A/4-11&12, PGS. 1116-1132

NOTES

Lines shown hereon not in bold are for graphical representation only.

BASIS OF BEARINGS

THE BASIS OF BEARINGS SHOWN HEREON ARE BASED ON THE CGPS STATIONS (BLSA) AND (LBC1) HAVING A BEARING OF NORTH 69°14'17" WEST.

HORIZONTAL DATUM

COORDINATES SHOWN ARE BASED ON THE CALIFORNIA COORDINATE SYSTEM (CCS83), ZONE VI, NAD 83, OCS (2017.50) EPOCH ADJUSTMENT.

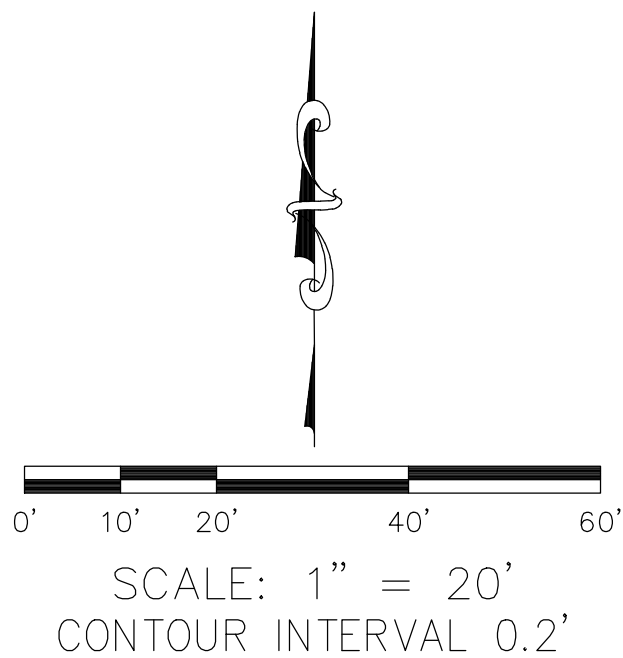
ALL DISTANCES SHOWN ARE GRID, UNLESS OTHERWISE NOTED. TO OBTAIN GROUND DISTANCE MULTIPLY A GRID DISTANCE BY 1.00001089.

COMBINATION FACTOR WAS HELD AT POINT NUMBER 252 N:2232760.41', E:6006776.86', ELEVATION= 12.61', AS SHOWN ON SHEET 1.

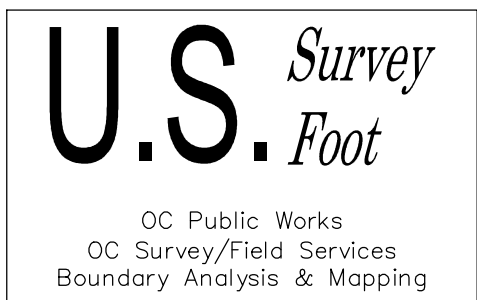
RECORD DISTANCES SHOWN HEREON ARE AS THEY APPEAR ON THE DOCUMENT OF RECORD. DISTANCES MAY BE EITHER GRID OR GROUND, AS PER SAID RECORD.

ALL DISTANCES ARE BASED ON THE U.S. SURVEY FOOT.

			COUNTY OF ORANGE OC PUBLIC WORKS OC SURVEY/FIELD SERVICES/BOUNDARY ANALYSIS & MAPPING		
			3272 WALKER LEE DR. STREET IMPROVEMENTS		
			BOUNDARY MAP PROJECT LIMITS: FROM 3272 BRIMHALL DR 3272 COPA DE ORO DR		
			DATE OF SURVEY: 02/10/2021 MAPPING OFFICE CHECK FIELD CHECK SCALE: 1" = 60' FILE: 3272 WALKER LEE_BOUNDARY_2020.DWG	BY: J. RUSSO & CREW BY: S. STROM BY: M. KUBISTY, PLS BY: J. RUSSO & CREW W.O. #ER19202 FILE #XXXX-XXXX	SHEET NO. 3 of 5
MARK	DATE	ITEM	REVISIONS		

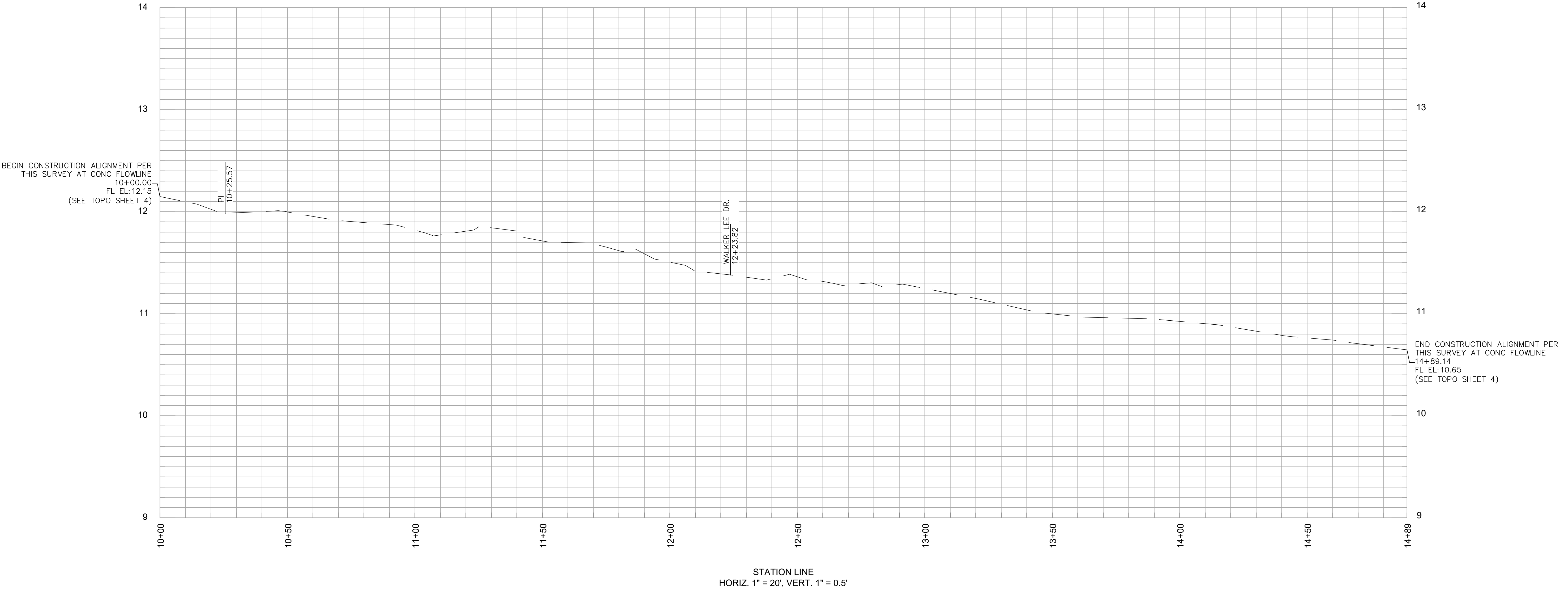


<u>SYMBOL</u>		<u>AREA PATTERN KEY</u>	
	Control Point		Concrete
	Fire Hydrant		Dirt
	Light Pole, Single		Grass
	Manhole Sewer		
	Sign Post		
	Tree		
	Valve Water		



			COUNTY OF ORANGE OC PUBLIC WORKS OC SURVEY/FIELD SERVICES/BOUNDARY ANALYSIS & MAPPING			
			WALKER LEE ROAD MAINTENANCE			
			TOPOGRAPHIC MAP			
			PROJECT LIMITS: FROM 3272 BRIMHALL DR 3272 COFA DE ORO DR			
			DATE OF SURVEY: 02/10/2021	BY: J. RUSSO & CREW		SHEET NO. 4 of 5
			MAPPING	BY: J. ISLAS		
			OFFICE CHECK	BY: M. KUBISTY, PLS		
			FIELD CHECK	BY: J. RUSSO		
MARK	DATE	ITEM	SCALE: 1"= 20'	W.O. #ER19202	FILE #1920PW-OP0024	
REVISIONS			FILE: WALKER LEE_TOPO_2020.DWG			

PROFILE OF THE EXISTING W'LY CONCRETE FLOWLINE OF MONTECITO RD



NOTE: THE ALIGNMENT FOR THIS PROFILE WAS DEVELOPED HOLDING A STATION OF 10+00 AT THE S'LY END OF THE EXISTING CONCRETE FLOWLINE ON THE W'LY SIDE OF MONTECITO RD AND INCREASING NE'LY AS SHOWN ON SHEET 4

U.S. Survey

Foot

OC Public Works
OC Survey/Field Services
Boundary Analysis & Mapping

COUNTY OF ORANGE OC PUBLIC WORKS OC SURVEY/FIELD SERVICES/BOUNDARY ANALYSIS & MAPPING			
WALKER LEE ROAD MAINTENANCE			
TOPOGRAPHIC MAP			
PROJECT LIMITS: FROM 3272 BRIMHALL DR 3272 COPA DE ORO DR			
DATE OF SURVEY: 02/10/2021		BY: J. RUSSO & CREW	
MAPPING		BY: L. ISLAS	
OFFICE CHECK		BY: M. KUBISTY, PLS	
FIELD CHECK		BY: J. RUSSO	
SCALE: 1"=20'		W.O. #ER19202	FILE #1920PW-OP0024
FILE: WALKER LEE_TOPO_2020.DWG			

MARK	DATE	ITEM
REVISIONS		

SHEET NO.	
5 of 5	