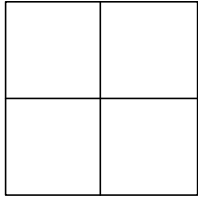


CORNER RECORD

Agency Index _____

Document Number 2020-2711City of UNINCORPORATED TERRITORYCounty of ORANGE, CaliforniaBrief Legal Description APPARENT INTERSECTION OF WRANGLER CT & CALICO CT

CORNER TYPE

- | | |
|--|---|
| <input type="checkbox"/> Government Corner | <input type="checkbox"/> Control |
| <input type="checkbox"/> Meander | <input type="checkbox"/> Property |
| <input type="checkbox"/> Rancho | <input checked="" type="checkbox"/> Other |

Date of Survey AUGUST 14, 2020

COORDINATES (Optional)

N. _____ E. _____

Elevation _____

Units Metric ☐ U.S. Survey Foot ☒

Horizontal Datum _____

Zone _____ Epoch Date _____

Vertical Datum _____

☐ Complies with Public Resources Code §§8801-8819☐ Complies with Public Resources Code §§8890-8902PLS Act Ref: ☐ 8765(d) ☒ 8771 ☐ 8773 ☐ Other: _____

Corner/ Monument:	<input type="checkbox"/> Left as found	<input type="checkbox"/> Established	<input type="checkbox"/> Rebuilt	<input type="checkbox"/> Pre-Construction
	<input type="checkbox"/> Found and tagged	<input checked="" type="checkbox"/> Reestablished	<input type="checkbox"/> Referenced	<input checked="" type="checkbox"/> Post-Construction

Narrative of corner identified and monument as found, set, reset, replaced, or removed:

☒ See sheet #2 for description (s):

THE PURPOSE OF THIS RECORD IS TO DOCUMENT THE PERPETUATION OF FOUND MONUMENT(S) PURSUANT TO THE PLS ACT SECTION 8771. NO CLAIM IS MADE AS TO THE RELATIONSHIP OF THE POINTS SHOWN HEREON TO TRUE BOUNDARY LOCATIONS. RIGHT OF WAY, PARCEL, OR LOT LINES, OR ANY OTHER DATA RELATED TO DELINEATION OF PROPERTY RIGHTS ARE DISPLAYED FOR GRAPHICAL REPRESENTATION ONLY.

BEARINGS SHOWN HEREON ARE ASSUMED AND ARE DISPLAYED FOR ANGULAR RELATIONSHIP ONLY.

MEASURED DISTANCES SHOWN HEREON ARE GRID DISTANCES. TO OBTAIN A GROUND DISTANCE, MULTIPLY A GRID DISTANCE BY 1.00006547.

RECORD DISTANCES SHOWN HEREON ARE AS THEY APPEAR ON THE DOCUMENT OF RECORD. DISTANCES MAY BE EITHER GRID OR GROUND, AS PER SAID RECORD.

SURVEYOR'S STATEMENT

This Corner Record was prepared by me or under my direction in conformance with

the Professional Land Surveyors' Act on FEBRUARY 23, 2021Signed Jesom Moreno (P.L.S.) or R.C.E. No. 8478

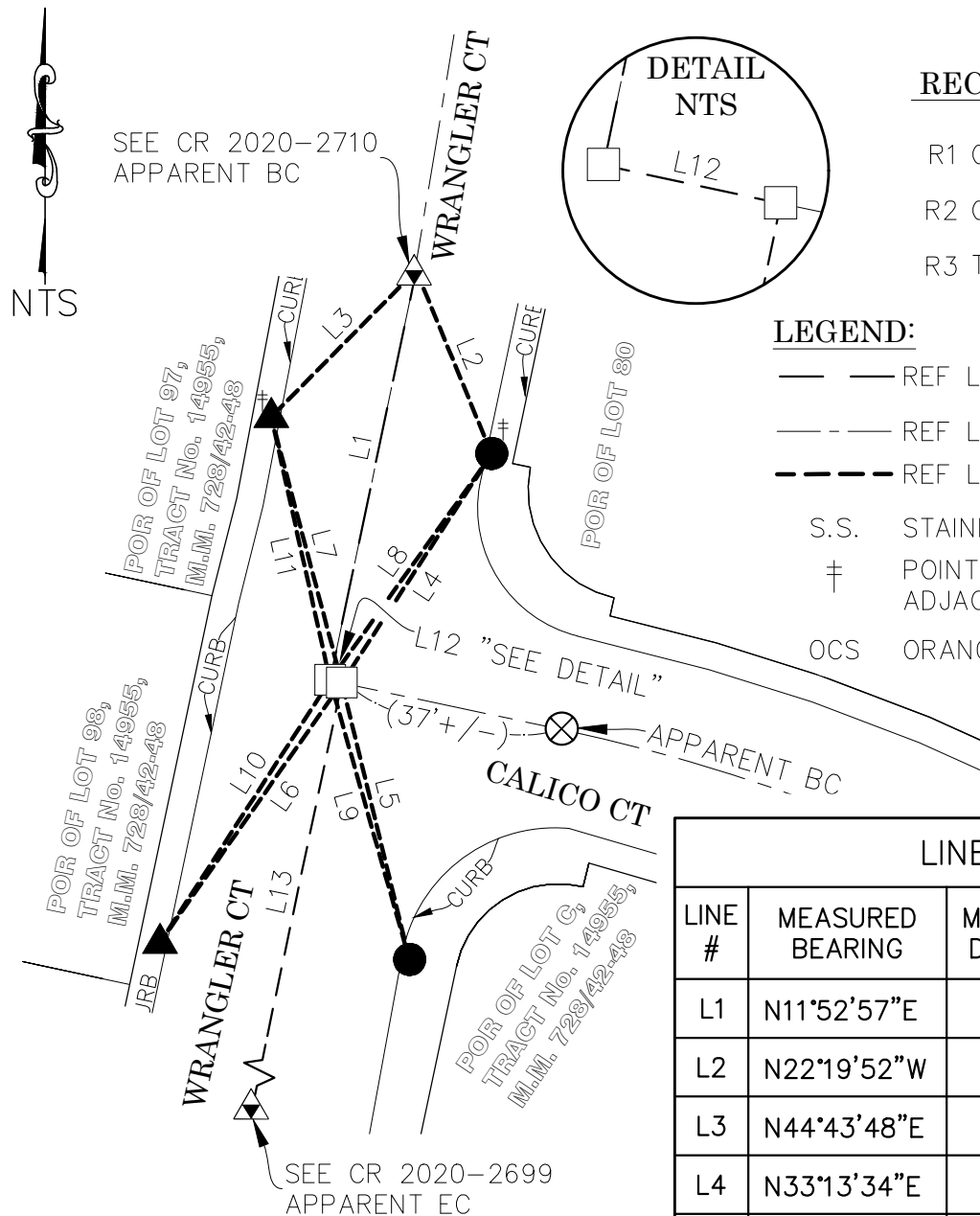
COUNTY SURVEYOR'S STATEMENT

This Corner Record was received FEBRUARY 23, 2021and examined and filed FEBRUARY 23, 2021Signed Kevin R. Hills (P.L.S.) or R.C.E. No. 6617Title COUNTY SURVEYOR

County Surveyor's Comment TIE DISTANCES SHOWN ON CR 2017-1408 WERE FOUND TO BE IN ERROR; THEREFORE THE MONUMENTS WERE RESET PER TIES SHOWN ON CR 2001-1579 AND THE MONUMENTS NE'LY AND SW'LY ALONG WRANGLER CT INSTEAD.

THE BASIS OF BEARINGS SHOWN HEREON DOES NOT CORRELATE WITH THAT OF THE ASSOCIATED PRE-CONSTRUCTION CORNER RECORD FILED IN 2017, THEREFORE "RECORD" BEARINGS FROM SAID ASSOCIATED CORNER RECORD ARE NOT SHOWN HEREON.

POST-CONSTRUCTION CORNER RECORD



RECORD REFERENCES:

R1 CR 2001-1579

R2 CR 2017-1408

R3 TR 14955 M.M.728/42-48

LEGEND:

— — REF LINE 1: MEAS BTWN MONS

— - — REF LINE 2: APPARENT CL

--- REF LINE 3: TIE LINES

S.S. STAINLESS STEEL

‡ POINT IS COMMON ON
ADJACENT CORNER RECORD

OCS ORANGE COUNTY SURVEYOR

LINE TABLE

LINE #	MEASURED BEARING	MEASURED DISTANCE	RECORD DISTANCE	REF
L1	N11°52'57"E	68.31'	68.32'	R1
L2	N22°19'52"W	32.38'	N/A	N/A
L3	N44°43'48"E	33.61'	33.63'	R1
L4	N33°13'34"E	44.60'	44.52'	R2
L5	N13°43'31"W	46.50'	46.41'	R2
L6	N35°01'59"E	51.69'	51.71'	R1
L7	N14°51'49"W	44.89'	44.89'	R1
L8	N35°33'03"E	45.35'	45.26'	R2
L9	N15°52'11"W	47.39'	47.31'	R2
L10	N32°59'26"E	50.96'	50.97'	R1
L11	N12°34'39"W	44.03'	44.01'	R1
L12	N77°50'47"W	1.97'	2.00'	R1
L13	N11°56'28"E	92.85'	92.85'	R1

MONUMENT NOTES:

- ☐ SET PUN SPK & 1-1/2" S.S. WSHR, STMPD "OCS", FLUSH IN AC, PER TIES SHOWN HEREON (SEE COUNTY SURVEYOR'S COMMENT ON PAGE 1)
- ☒ FD LEAD, & 3/4" BR TAG STMPD "TIE RCE 23956", ON TOP OF CONC CURB, PER R1
- ☒ FD LEAD, & 3/4" BR TAG, STMPD "OCS TIE", ON TOP OF CONC CURB, PER R2
- ☒ SEARCHED, FOUND NOTHING
- ☒ FD MONUMENT AS DESCRIBED ON ADJACENT CORNER RECORD