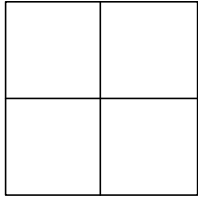


CORNER RECORD

Agency Index _____

Document Number 2020-2694City of UNINCORPORATED TERRITORYCounty of ORANGE, CaliforniaBrief Legal Description APPARENT INTERSECTION OF STAMPEDE ST & DROVER COURT

CORNER TYPE

- | | |
|--|---|
| <input type="checkbox"/> Government Corner | <input type="checkbox"/> Control |
| <input type="checkbox"/> Meander | <input type="checkbox"/> Property |
| <input type="checkbox"/> Rancho | <input checked="" type="checkbox"/> Other |

Date of Survey AUGUST 14, 2020

COORDINATES (Optional)

N. _____ E. _____
Elevation _____
Units Metric ☐ U.S. Survey Foot ☒
Horizontal Datum _____
Zone _____ Epoch Date _____
Vertical Datum _____

- ☐ Complies with Public Resources Code §§8801-8819
☐ Complies with Public Resources Code §§8890-8902

PLS Act Ref: ☐ 8765(d) ☒ 8771 ☐ 8773 ☐ Other: _____

Corner/ Monument:	<input type="checkbox"/> Left as found	<input type="checkbox"/> Established	<input type="checkbox"/> Rebuilt	<input type="checkbox"/> Pre-Construction
	<input type="checkbox"/> Found and tagged	<input checked="" type="checkbox"/> Reestablished	<input type="checkbox"/> Referenced	<input checked="" type="checkbox"/> Post-Construction

Narrative of corner identified and monument as found, set, reset, replaced, or removed:

☒ See sheet #2 for description (s):

THE PURPOSE OF THIS RECORD IS TO DOCUMENT THE PERPETUATION OF FOUND MONUMENT(S) PURSUANT TO THE PLS ACT SECTION 8771. NO CLAIM IS MADE AS TO THE RELATIONSHIP OF THE POINTS SHOWN HEREON TO TRUE BOUNDARY LOCATIONS. RIGHT OF WAY, PARCEL, OR LOT LINES, OR ANY OTHER DATA RELATED TO DELINEATION OF PROPERTY RIGHTS ARE DISPLAYED FOR GRAPHICAL REPRESENTATION ONLY.

BEARINGS SHOWN HEREON ARE ASSUMED AND ARE DISPLAYED FOR ANGULAR RELATIONSHIP ONLY.

MEASURED DISTANCES SHOWN HEREON ARE GRID DISTANCES. TO OBTAIN A GROUND DISTANCE, MULTIPLY A GRID DISTANCE BY 1.00007110.

RECORD DISTANCES SHOWN HEREON ARE AS THEY APPEAR ON THE DOCUMENT OF RECORD. DISTANCES MAY BE EITHER GRID OR GROUND, AS PER SAID RECORD.

SURVEYOR'S STATEMENT

This Corner Record was prepared by me or under my direction in conformance with the Professional Land Surveyors' Act on FEBRUARY 23, 2021

Signed Jesom Moreno (P.L.S.) or R.C.E. No. 8478



COUNTY SURVEYOR'S STATEMENT

This Corner Record was received FEBRUARY 23, 2021

and examined and filed FEBRUARY 23, 2021

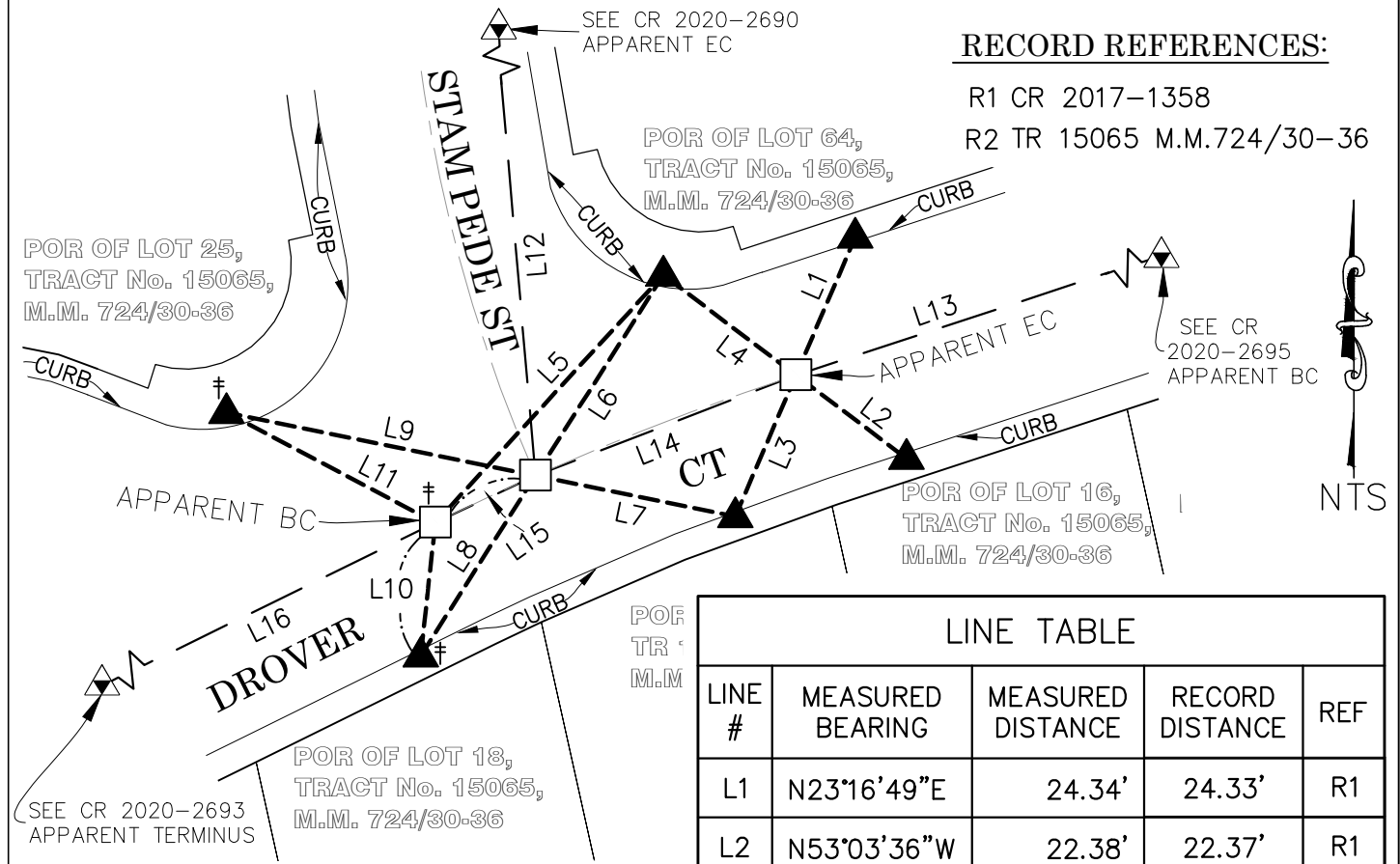
Signed Kevin R. Hills (P.L.S.) or R.C.E. No. 6617

Title COUNTY SURVEYOR



County Surveyor's Comment THE BASIS OF BEARINGS SHOWN HEREON DOES NOT CORRELATE WITH THAT OF THE ASSOCIATED PRE-CONSTRUCTION CORNER RECORD FILED IN 2017, THEREFORE "RECORD" BEARINGS FROM SAID ASSOCIATED CORNER RECORD ARE NOT SHOWN HEREON.

POST-CONSTRUCTION CORNER RECORD



RECORD REFERENCES:

R1 CR 2017-1358

R2 TR 15065 M.M.724/30-36

LINE TABLE

LINE #	MEASURED BEARING	MEASURED DISTANCE	RECORD DISTANCE	REF
L1	N23°16'49"E	24.34'	24.33'	R1
L2	N53°03'36"W	22.38'	22.37'	R1
L3	N23°14'26"E	24.89'	24.89'	R1
L4	N52°56'18"W	26.89'	26.88'	R1
L5	N42°38'56"E	54.48'	54.45'	R1
L6	N32°31'55"E	38.49'	38.47'	R1
L7	N78°25'11"W	33.01'	32.99'	R1
L8	N32°29'54"E	34.59'	34.57'	R1
L9	N78°27'32"W	51.04'	51.02'	R1
L10	N06°17'14"E	21.69'	21.67'	R1
L11	N62°11'01"W	38.21'	38.20'	R1
L12 (CHORD)	N04°57'15"W	160.80'	160.73'	R2
L13	N71°50'03"E	140.06'	140.03'	R1
L14 (CHORD)	N68°55'24"E	45.18'	45.17'	R1
L15 (CHORD)	N64°49'37"E	17.91'	17.89'	R1
L16	N63°53'14"E	70.71'	70.71'	R1

LEGEND:

— — REF LINE 1: MEAS BTWN MONS

- - - REF LINE 2: APPARENT CL

- - - REF LINE 3: TIE LINES

S.S. STAINLESS STEEL

OCS ORANGE COUNTY SURVEYOR

† POINT IS COMMON ON ADJACENT
CORNER RECORD

MONUMENT NOTES:

□ SET PUN SPK & 1-1/2" S.S. WSHR,
STMPD "OCS", FLUSH IN AC, PER TIES
SHOWN HEREON (SEE COUNTY
SURVEYOR'S COMMENT ON PAGE 1)

▲ FD LEAD, & 3/4" BR TAG STMPD "TIE
RCE 23956", ON TOP OF CONC CURB,
PER R1

▲ FD MONUMENT AS DESCRIBED ON
ADJACENT CORNER RECORD