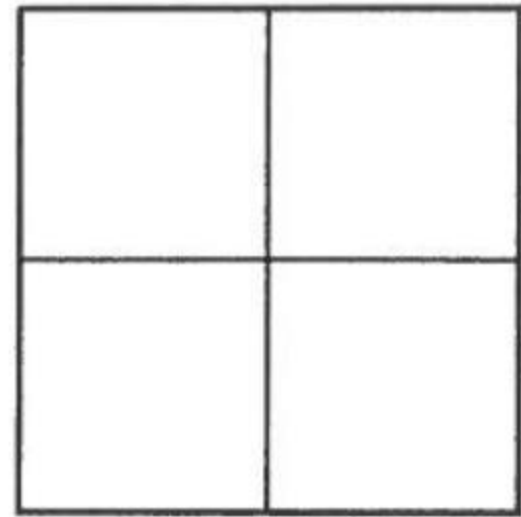


# CORNER RECORD

Agency Index \_\_\_\_\_

Document Number \_\_\_\_\_

**2017-1408A**City of UNINCORPORATED TERRITORYCounty of **ORANGE**, CaliforniaBrief Legal Description INTERSECTION OF WRANGLER COURT & CALICO COURT**CORNER TYPE**

Government Corner ☐ Control ☐  
Meander ☐ Property ☐  
Rancho ☐ Other ☒

Date of Survey MAY, 2017**COORDINATES (Optional)**

N. \_\_\_\_\_ E. \_\_\_\_\_  
Elevation \_\_\_\_\_  
Units Metric ☐ U.S. Survey Foot ☒  
Horizontal Datum \_\_\_\_\_  
Zone \_\_\_\_\_ Epoch Date \_\_\_\_\_  
Vertical Datum \_\_\_\_\_

☐ Complies with Public Resources Code §§8801-8819  
☐ Complies with Public Resources Code §§8890-8902

PLS Act Ref: ☐ 8765(d) ☒ 8771 ☐ 8773 ☐ Other: \_\_\_\_\_

Corner/Monument: ☒ Left as found ☐ Established ☐ Rebuilt ☒ Pre-Construction  
☐ Found and tagged ☐ Reestablished ☐ Referenced ☐ Post-Construction

Narrative of corner identified and monument as found, set, reset, replaced, or removed:

☒ See sheet #2 for description (s):**SURVEYOR'S STATEMENT**

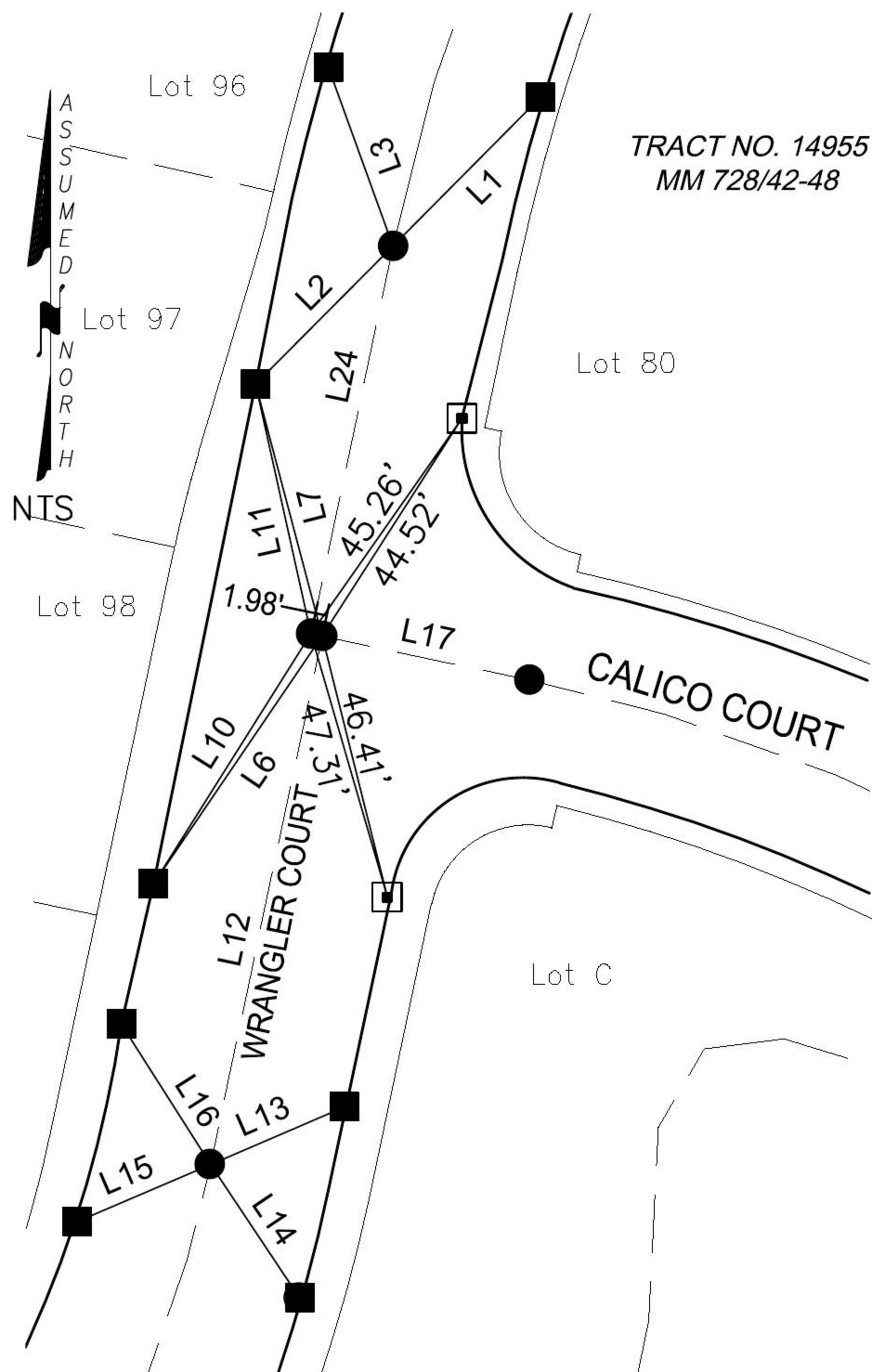
This Corner Record was prepared by me or under my direction in conformance with  
the Professional Land Surveyors' Act on 1-8-18

Signed Jesom Moreno P.L.S. or R.C.E. No. 8478**COUNTY SURVEYOR'S STATEMENT**This Corner Record was received JUL 20 2017and examined and filed OCT 21 2019Signed Kevin R. Hills P.L.S. or R.C.E. No. 6617Title **COUNTY SURVEYOR**

County Surveyor's Comment \_\_\_\_\_



## PRE-CONSTRUCTION C.R.



LINE TABLE			
LINE #	BEARING	MEASURED DISTANCE	RECORD DISTANCE
L1	N44°50'39"E	36.02'	(36.02')
L2	N44°47'07"E	33.61'	(33.63')
L3	S19°53'51"E	32.71'	(32.72')
L6	N34°17'19"E	51.67' *	(51.71')
L7	N14°49'48"W	44.89'	(44.89')
L10	N32°13'44"E	50.95'	(50.97')
L11	N12°31'41"W	44.02'	(44.01')
L12	N11°56'19"E	93.03' *	(92.85')
L13	N66°44'46"E	25.01' *	(24.74')
L14	N33°42'50"W	27.64'	(27.64')
L15	N66°47'20"E	25.05' *	(25.38')
L16	N32°26'34"W	28.66'	(28.68')
L17	N78°03'41"W	36.61'	(36.61')
L24	N11°56'19"E	68.30'	(68.32')

**LEGEND:**

- \* DISTANCE MEASURED  
VERIFIED IN FIELD

**RECORD REFERENCES:**

(R1) ORANGE COUNTY CORNER RECORD 2001-1579

**MONUMENT NOTES:**

- FOUND LEAD & TACK, TAGGED "RCE 23956" ON TC.
- FOUND GEAR SPIKE & WASHER, STAMPED "RCE 23956", FLUSH PER R1.
- SET OCS TIE TAG

**NOTES:**

- BEARINGS SHOWN HEREON ARE ASSUMED AND ARE DISPLAYED FOR ANGULAR RELATIONSHIP ONLY.
- PARCEL LINES SHOWN HEREON ARE FOR GRAPHICAL REPRESENTATION ONLY.