

CORNER RECORD

Agency Index

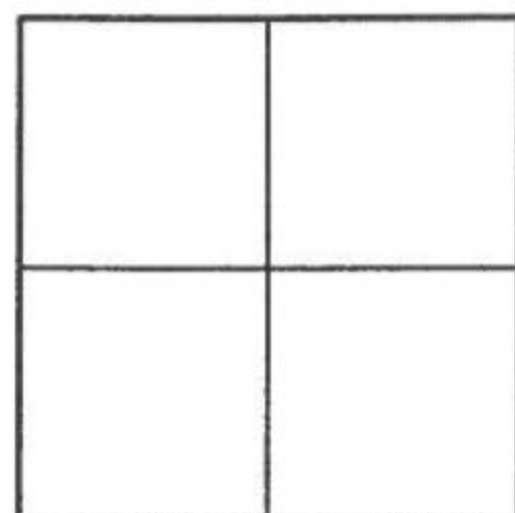
Document Number

2017-1407A

City of UNINCORPORATED TERRITORY

County of ORANGE, California

Brief Legal Description INTERSECTION OF OSO PARKWAY & WRANGLER CT, WRANGLER CT & GINGHAM ST



CORNER TYPE

Government Corner ☐ Control ☐
Meander ☐ Property ☐
Rancho ☐ Other ☒

Date of Survey MAY, 2017

COORDINATES (Optional)

N. _____ E. _____
Elevation _____
Units Metric ☐ U.S. Survey Foot ☒
Horizontal Datum _____
Zone _____ Epoch Date _____
Vertical Datum _____

☐ Complies with Public Resources Code §§8801-8819
☐ Complies with Public Resources Code §§8890-8902

PLS Act Ref: ☐ 8765(d) ☒ 8771 ☐ 8773 ☐ Other:
Corner/Monument: ☒ Left as found ☐ Established ☐ Rebuilt ☒ Pre-Construction
☐ Found and tagged ☐ Reestablished ☐ Referenced ☐ Post-Construction

Narrative of corner identified and monument as found, set, reset, replaced, or removed:
☒ See sheet #2 for description (s):

SURVEYOR'S STATEMENT

This Corner Record was prepared by me or under my direction in conformance with
the Professional Land Surveyors' Act on 1-8-18

Signed [Signature] P.L.S. or R.C.E. No. 8478



COUNTY SURVEYOR'S STATEMENT

This Corner Record was received JUL 20 2017

and examined and filed OCT 21 2019

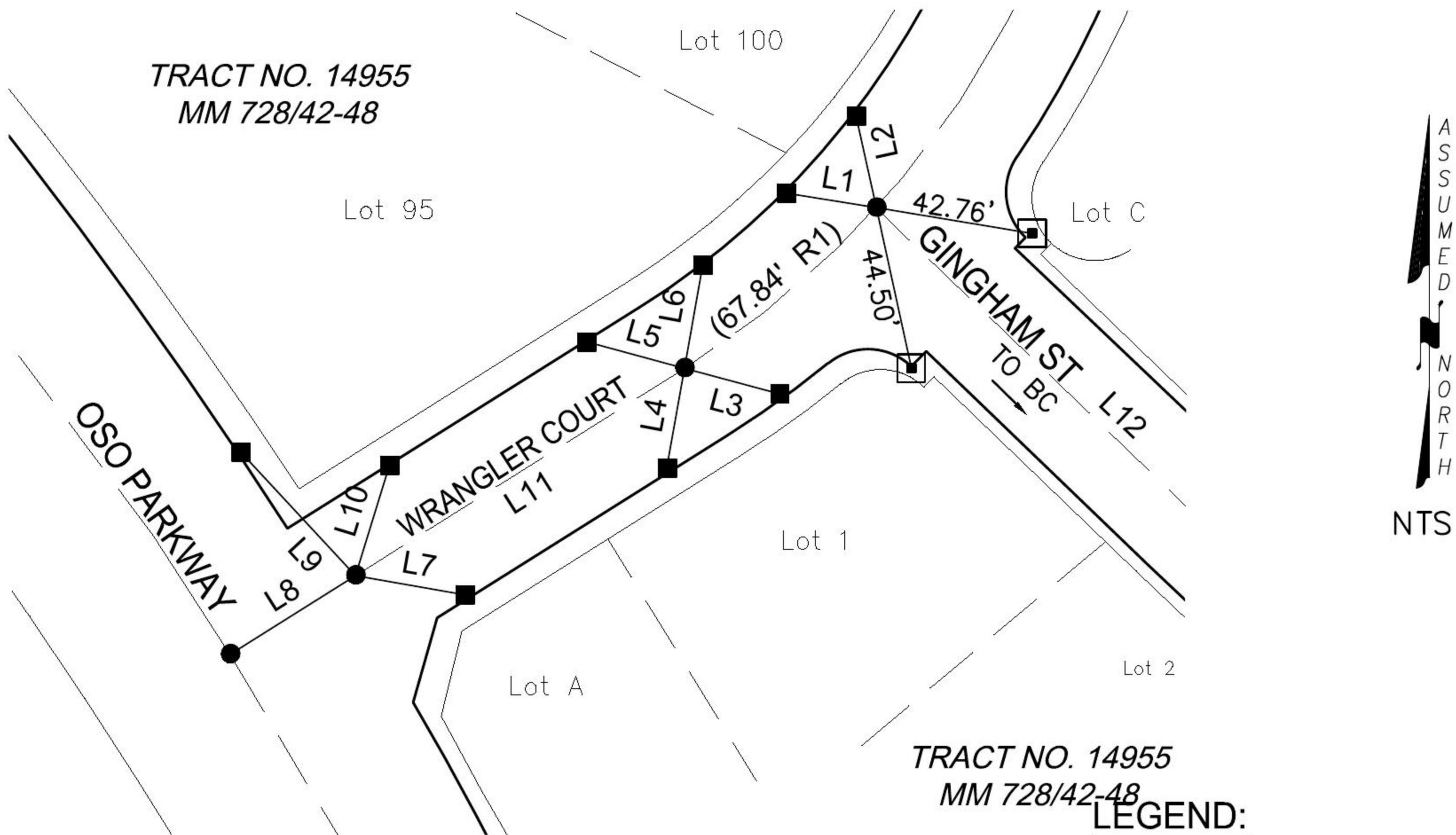
Signed [Signature] P.L.S. or R.C.E. No. 6617

Title COUNTY SURVEYOR



County Surveyor's Comment

PRE-CONSTRUCTION C.R.



LEGEND:

* DISTANCE MEASURED
VERIFIED IN FIELD

LINE TABLE			
LINE #	BEARING	MEASURED DISTANCE	RECORD DISTANCE
L7	N80°05'11"W	30.18'	(30.18')
L8	N57°47'37"E	40.02'	(40.00')
L9	N42°54'40"W	45.54'	(45.57')
L10	N17°06'19"E	31.21'	(31.22')
L11	N57°47'40"E	105.16*	(105.05')
L12	N46°05'46"W	167.36*	(167.40')

LINE TABLE			
LINE #	BEARING	MEASURED DISTANCE	RECORD DISTANCE
L1	N80°43'22"W	24.63'	(24.63')
L2	N12°23'23"W	25.38'	(25.40')
L3	N74°53'50"W	26.63'	(26.64')
L4	N10°00'26"E	27.33'	(27.35')
L5	N74°52'27"W	27.44'	(27.41')
L6	N09°59'15"E	28.24'	(28.25')

RECORD REFERENCES:

(R1) ORANGE COUNTY CORNER RECORD 2001-1578

MONUMENT NOTES:

- FOUND LEAD & TACK, TAGGED "RCE 23956" ON TC.
- FOUND GEAR SPIKE & WASHER, STAMPED "RCE 23956", FLUSH PER R1.
- SET OCS TIE TAG

NOTES:

- BEARINGS SHOWN HEREON ARE ASSUMED AND ARE DISPLAYED FOR ANGULAR RELATIONSHIP ONLY.
- PARCEL LINES SHOWN HEREON ARE FOR GRAPHICAL REPRESENTATION ONLY.