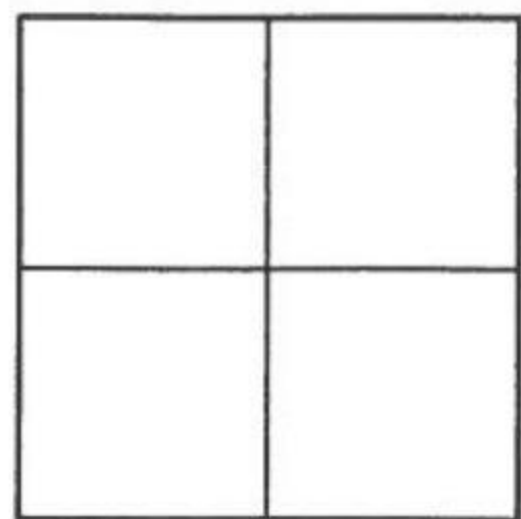


CORNER RECORD

Agency Index

Document Number

2017-1405ACity of UNINCORPORATED TERRITORYCounty of ORANGE, CaliforniaBrief Legal Description EC ON GINGHAM STREET, +/- 204' NORTH OF PROSPECTOR COURT**CORNER TYPE**

Government Corner ☐ Control ☐
Meander ☐ Property ☐
Rancho ☐ Other ☒

Date of Survey MAY, 2017**COORDINATES (Optional)**

N. _____ E. _____
Elevation _____
Units Metric ☐ U.S. Survey Foot ☒
Horizontal Datum _____
Zone _____ Epoch Date _____
Vertical Datum _____

☐ Complies with Public Resources Code §§8801-8819
☐ Complies with Public Resources Code §§8890-8902

PLS Act Ref: ☐ 8765(d) ☒ 8771 ☐ 8773 ☐ Other:
Corner/Monument: ☒ Left as found ☐ Established ☐ Rebuilt ☒ Pre-Construction
☐ Found and tagged ☐ Reestablished ☐ Referenced ☐ Post-Construction

Narrative of corner identified and monument as found, set, reset, replaced, or removed:

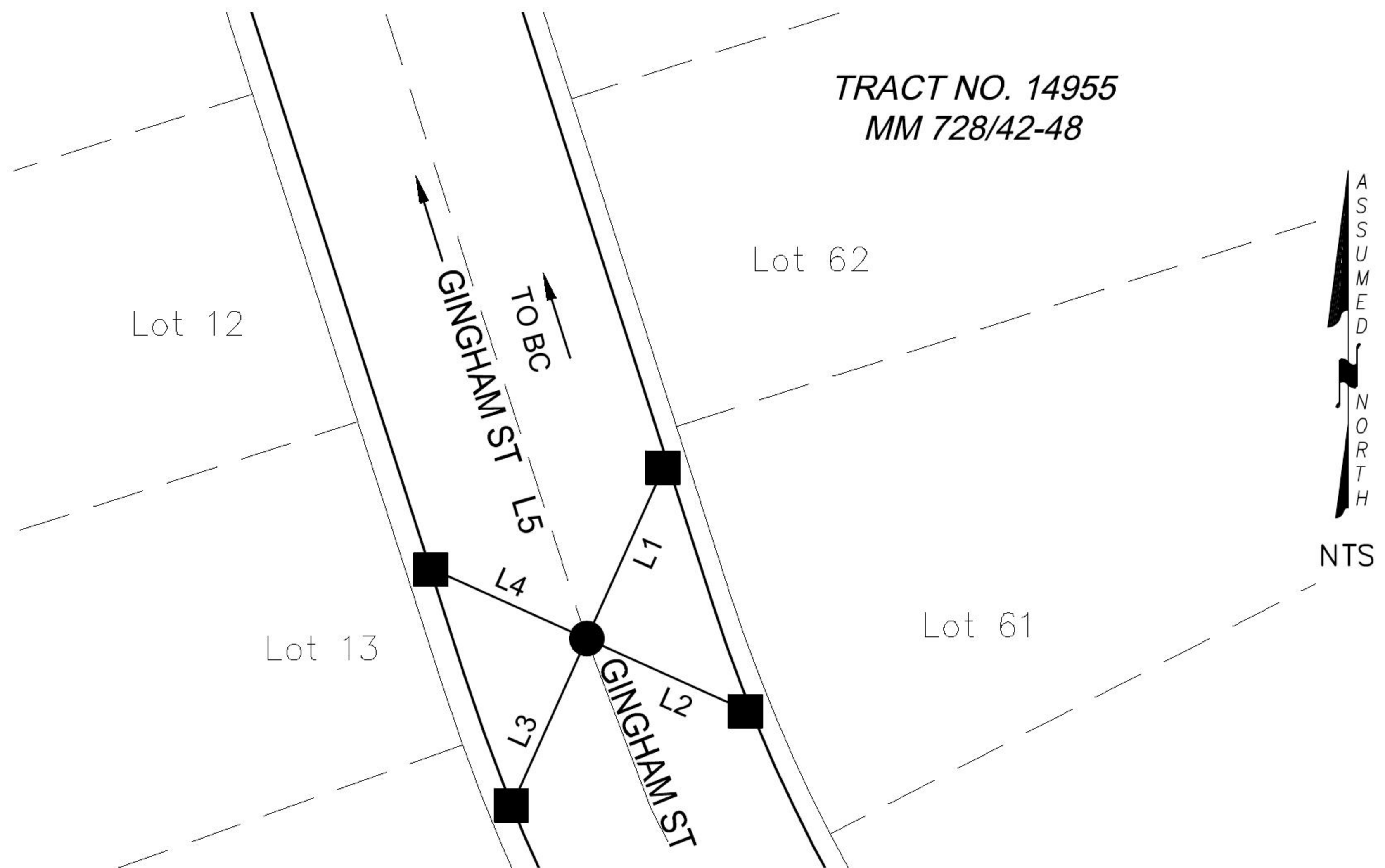
☒ See sheet #2 for description (s):**SURVEYOR'S STATEMENT**

This Corner Record was prepared by me or under my direction in conformance with
the Professional Land Surveyors' Act on 1-8-18

Signed Jesom Moreno P.L.S. or R.C.E. No. 8478**COUNTY SURVEYOR'S STATEMENT**This Corner Record was received JUL 20 2017and examined and filed OCT 21 2019Signed Kevin R. Hills P.L.S. or ~~R.C.E.~~ No. 6617Title COUNTY SURVEYOR

County Surveyor's Comment _____

PRE-CONSTRUCTION C.R.



LINE TABLE			
LINE #	BEARING	MEASURED DISTANCE	RECORD DISTANCE
L1	N24°08'22"E	27.35'	(27.36')
L2	N65°47'00"W	25.42'	(25.41')
L3	N24°04'40"E	26.40'	(26.41')
L4	N65°43'10"W	24.68'	(24.71')
L5	N17°47'29"W	441.50'*	(441.46')

LEGEND:

* DISTANCE MEASURED
VERIFIED IN FIELD

RECORD REFERENCES:

(R1) ORANGE COUNTY CORNER RECORD 2001-1576

MONUMENT NOTES:

- FOUND LEAD & TACK, TAGGED "RCE 23956" ON TC.
- FOUND GEAR SPIKE & WASHER, STAMPED "RCE 23956", FLUSH PER R1.

NOTES:

- BEARINGS SHOWN HEREON ARE ASSUMED AND ARE DISPLAYED FOR ANGULAR RELATIONSHIP ONLY.
- PARCEL LINES SHOWN HEREON ARE FOR GRAPHICAL REPRESENTATION ONLY.