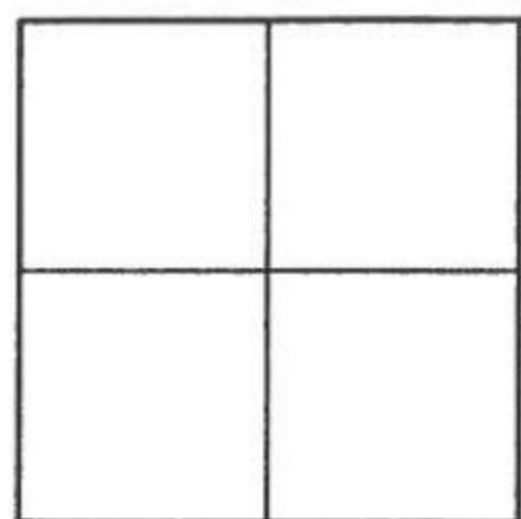


CORNER RECORD

Agency Index _____

Document Number _____

2017-1404ACity of UNINCORPORATED TERRITORYCounty of ORANGE, CaliforniaBrief Legal Description INTERSECTION OF GINGHAM ST & PROSPECTOR COURT**CORNER TYPE**

Government Corner ☐ Control ☐
Meander ☐ Property ☐
Rancho ☐ Other ☒

Date of Survey MAY, 2017**COORDINATES (Optional)**

N. _____ E. _____
Elevation _____
Units Metric ☐ U.S. Survey Foot ☒
Horizontal Datum _____
Zone _____ Epoch Date _____
Vertical Datum _____

☐ Complies with Public Resources Code §§8801-8819
☐ Complies with Public Resources Code §§8890-8902

PLS Act Ref: ☐ 8765(d) ☒ 8771 ☐ 8773 ☐ Other: _____

Corner/Monument: ☒ Left as found ☐ Established ☐ Rebuilt ☒ Pre-Construction
☐ Found and tagged ☐ Reestablished ☐ Referenced ☐ Post-Construction

Narrative of corner identified and monument as found, set, reset, replaced, or removed:

☒ See sheet #2 for description (s):**SURVEYOR'S STATEMENT**

This Corner Record was prepared by me or under my direction in conformance with
the Professional Land Surveyors' Act on 1-8-18

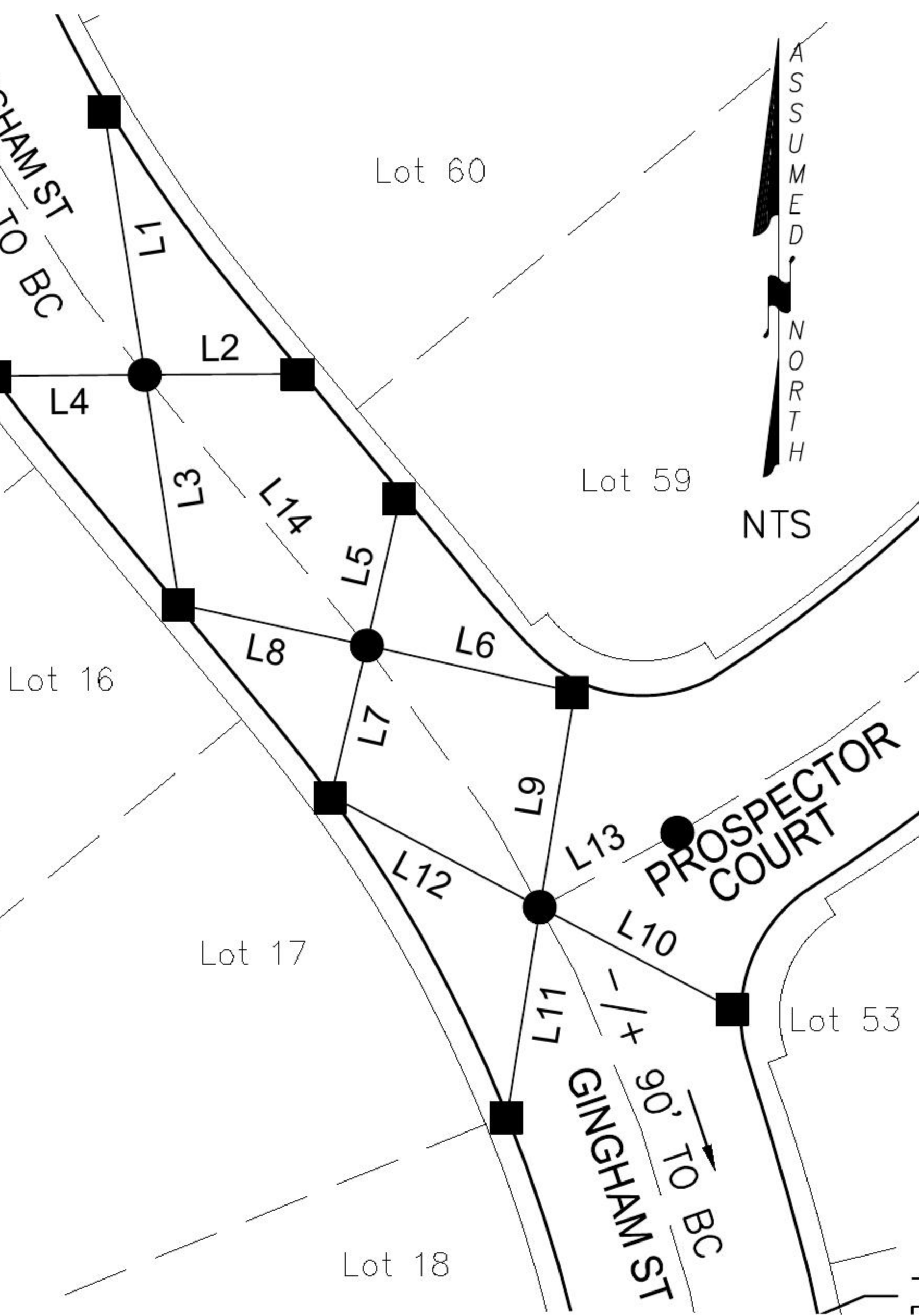
Signed Jesom Moreno P.L.S. or R.C.E. No. 8478**COUNTY SURVEYOR'S STATEMENT**This Corner Record was received JUL 20 2017and examined and filed OCT 21 2019Signed Kevin R. Hills P.L.S. or ~~R.C.E.~~ No. 6617Title COUNTY SURVEYOR

County Surveyor's Comment _____

PRE-CONSTRUCTION C.R.

TRACT NO. 14955
MM 728/42-48

LINE TABLE			
LINE #	BEARING	MEASURED DISTANCE	RECORD DISTANCE
L1	N08°39'10"W	40.92'	(40.94')
L2	N89°35'50"E	23.53*	(23.59')
L3	N08°33'41"W	35.64'	(35.65')
L4	N89°33'40"E	22.90'	(22.87')
L5	N12°42'25"E	23.15'	(23.13')
L6	N77°17'05"W	32.70*	(32.74')
L7	N12°48'12"E	23.72'	(23.72')
L8	N77°41'55"W	29.47'	(29.44')
L9	N08°47'22"E	33.39'	(33.41')
L10	N62°15'51"W	33.52'	(33.54')
L11	N08°51'01"E	32.60'	(32.61')
L12	N62°17'52"W	36.28'	(36.28')
L13	N61°39'51"E	23.95'	(23.93')
L14	N39°23'36"W	53.73'	(53.72')



LEGEND:
* DISTANCE MEASURED
VERIFIED IN FIELD

RECORD REFERENCES:
(R1) ORANGE COUNTY CORNER RECORD 2001-1574

- MONUMENT NOTES:
- FOUND LEAD & TACK, TAGGED "RCE 23956" ON TC.
 - FOUND GEAR SPIKE & WASHER, STAMPED "RCE 23956", FLUSH PER R1.

NOTES:

- BEARINGS SHOWN HEREON ARE ASSUMED AND ARE DISPLAYED FOR ANGULAR RELATIONSHIP ONLY.
- PARCEL LINES SHOWN HEREON ARE FOR GRAPHICAL REPRESENTATION ONLY.