

CORNER RECORD

Agency Index

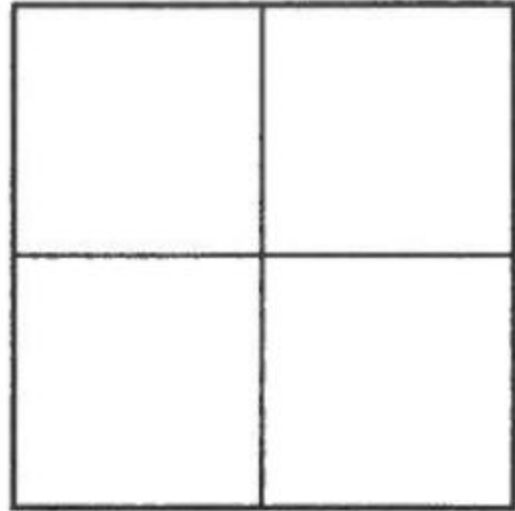
Document Number

2017-1403A

City of UNINCORPORATED TERRITORY

County of ORANGE, California

Brief Legal Description BC ON GINGHAM STREET, +/- 90' SOUTH OF PROSPECTOR COURT



CORNER TYPE

Government Corner ☐ Control ☐
Meander ☐ Property ☐
Rancho ☐ Other ☒

Date of Survey MAY, 2017

COORDINATES (Optional)

N. _____ E. _____
Elevation _____
Units Metric ☐ U.S. Survey Foot ☒
Horizontal Datum _____
Zone _____ Epoch Date _____
Vertical Datum _____

☐ Complies with Public Resources Code §§8801-8819
☐ Complies with Public Resources Code §§8890-8902

PLS Act Ref: ☐ 8765(d) ☒ 8771 ☐ 8773 ☐ Other:
Corner/Monument: ☒ Left as found ☐ Established ☐ Rebuilt ☒ Pre-Construction
☐ Found and tagged ☐ Reestablished ☐ Referenced ☐ Post-Construction

Narrative of corner identified and monument as found, set, reset, replaced, or removed:
☒ See sheet #2 for description (s):

SURVEYOR'S STATEMENT

This Corner Record was prepared by me or under my direction in conformance with
the Professional Land Surveyors' Act on 1-8-18

Signed Jesom Moreno P.L.S. or R.C.E. No. 8478



COUNTY SURVEYOR'S STATEMENT

This Corner Record was received JUL 20 2017

and examined and filed OCT 21 2019

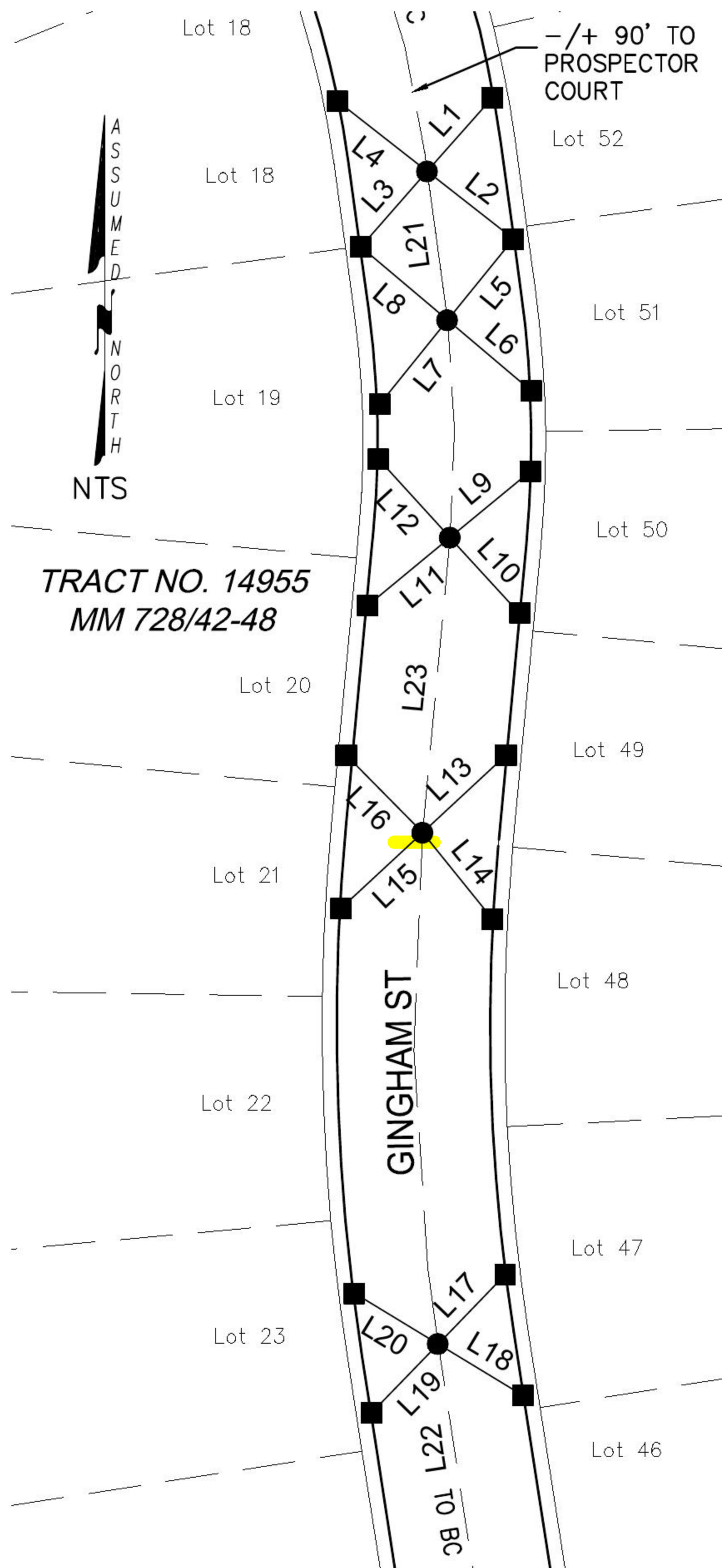
Signed Kevin R. Hills P.L.S. or R.C.E. No. 6617

Title COUNTY SURVEYOR



County Surveyor's Comment

PRE-CONSTRUCTION C.R.

RECORD REFERENCES:

(R1) ORANGE COUNTY CORNER RECORD 2001-1573

MONUMENT NOTES:

- FOUND LEAD & TACK, TAGGED "RCE 23956" ON TC.
- FOUND GEAR SPIKE & WASHER, STAMPED "RCE 23956", FLUSH PER R1.

NOTES:

- BEARINGS SHOWN HEREON ARE ASSUMED AND ARE DISPLAYED FOR ANGULAR RELATIONSHIP ONLY.
- PARCEL LINES SHOWN HEREON ARE FOR GRAPHICAL REPRESENTATION ONLY.

LINE TABLE

LINE #	BEARING	MEASURED DISTANCE	RECORD DISTANCE
L1	N41°25'03"E	23.61'	(23.62')
L2	N51°59'08"W	26.28'	(26.28')
L3	N41°21'00"E	24.18'	(24.17')
L4	N51°55'35"W	27.34'	(27.36')
L5	N38°59'05"E	25.17'	(25.18')
L6	N49°48'37"W	26.31'	(26.29')
L7	N38°55'33"E	25.94'	(25.94')
L8	N49°49'38"W	27.28'	(27.29')
L9	N50°22'03"E	25.04'	(25.02')
L10	N42°28'47"W	24.74'	(24.77')
L11	N50°29'01"E	25.63'	(25.65')
L12	N42°23'55"W	25.57'	(25.59')
L13	N46°59'47"E	27.41'	(27.39')
L14	N38°56'35"W	26.65' *	(26.70')
L15	N47°05'06"E	26.80'	(26.83')
L16	N44°39'30"W	26.12'	(26.11')
L17	N43°58'21"E	23.20'	(23.18')
L18	N58°46'04"W	23.81' *	(23.86')
L19	N44°03'25"E	22.94'	(22.95')
L20	N58°43'25"W	23.54'	(23.51')
L21	N07°45'27"W	36.08'	(36.05')
L22	N08°48'02"W	232.91'	(232.92')
L23	N05°19'24"E	71.24'	(71.19')

LEGEND:

- * DISTANCE MEASURED
VERIFIED IN FIELD