

CORNER RECORD

Agency Index _____

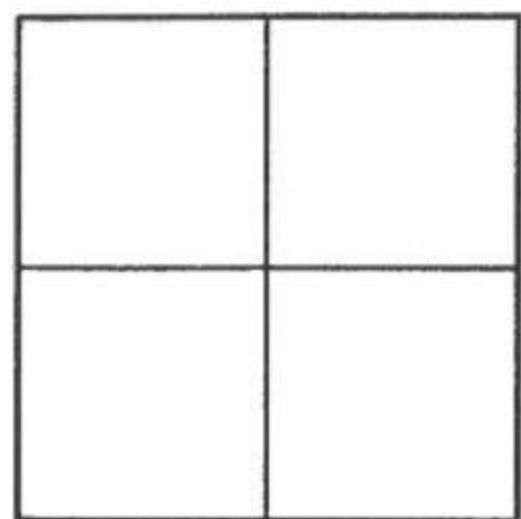
Document Number _____

2017-1401A

City of UNINCORPORATED TERRITORY

County of ORANGE, California

Brief Legal Description BC ON GINGHAM STREET, +/- 268' NORTH OF BRIDLE PATH



CORNER TYPE

Government Corner ☐ Control ☐
Meander ☐ Property ☐
Rancho ☐ Other ☒

Date of Survey MAY, 2017

COORDINATES (Optional)

N. _____ E. _____
Elevation _____
Units Metric ☐ U.S. Survey Foot ☒
Horizontal Datum _____
Zone _____ Epoch Date _____
Vertical Datum _____

☐ Complies with Public Resources Code §§8801-8819
☐ Complies with Public Resources Code §§8890-8902

PLS Act Ref: ☐ 8765(d) ☐ 8771 ☐ 8773 ☐ Other: _____

Corner/
Monument: ☒ Left as found ☐ Established ☐ Rebuilt ☒ Pre-Construction
☐ Found and tagged ☐ Reestablished ☐ Referenced ☐ Post-Construction

Narrative of corner identified and monument as found, set, reset, replaced, or removed:

☒ See sheet #2 for description (s):

SURVEYOR'S STATEMENT

This Corner Record was prepared by me or under my direction in conformance with
the Professional Land Surveyors' Act on 1-8-18

Signed *Jesom Moreno* P.L.S. or R.C.E. No. 8478



COUNTY SURVEYOR'S STATEMENT

This Corner Record was received JUL 20 2017

and examined and filed OCT 21 2019

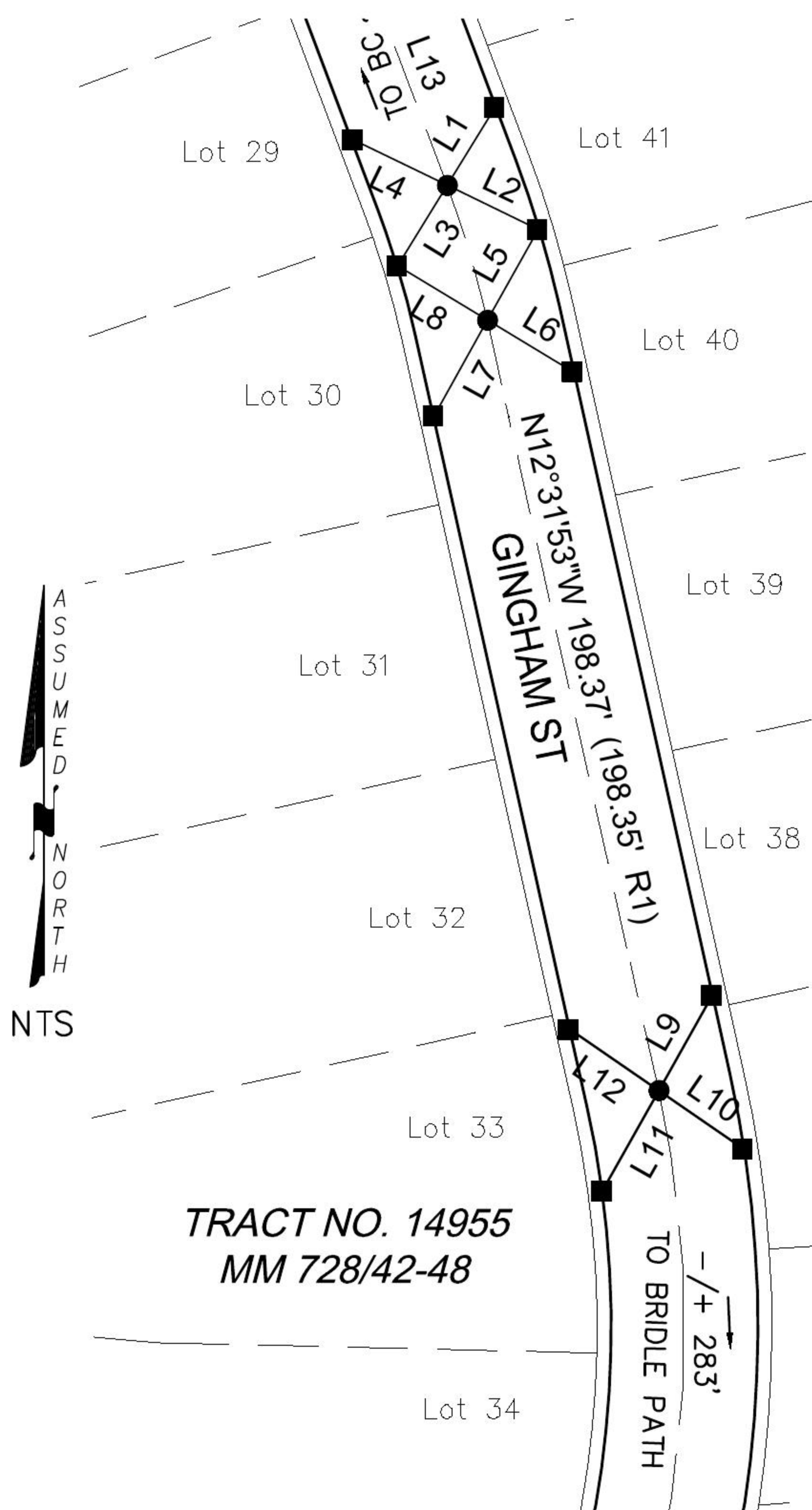
Signed *Kevin R. Hills* P.L.S. or R.C.E. No. 6617

Title COUNTY SURVEYOR



County Surveyor's Comment _____

PRE-CONSTRUCTION C.R.



LINE TABLE			
LINE #	BEARING	MEASURED DISTANCE	RECORD DISTANCE
L1	N31°31'07"E	22.94'	(22.96')
L2	N64°09'52"W	25.33'	(25.38')
L3	N31°39'50"E	23.77'	(23.81')
L4	N64°08'48"W	26.65'	(26.64')
L5	N29°08'32"E	26.15'	(26.15')
L6	N58°49'26"W	25.14'	(25.15')
L7	N29°08'46"E	27.57'	(27.59')
L8	N58°48'39"W	26.35'	(26.37')
L9	N29°20'48"E	27.42'	(27.45')
L10	N55°28'47"W	25.82'	(25.85')
L11	N29°19'17"E	28.90'*	(28.96')
L12	N55°29'12"W	27.22'	(27.25')
L13	N20°38'18"W	82.16'	(82.11')

LEGEND:
* DISTANCE MEASURED
VERIFIED IN FIELD

- RECORD REFERENCES:
- (R1) ORANGE COUNTY CORNER RECORD 2001-1571
- MONUMENT NOTES:
- FOUND GEAR SPIKE & WASHER, STAMPED "RCE 23956", FLUSH PER R1.
 - FOUND LEAD & TACK, TAGGED "RCE 23956" ON TC.

NOTES:

- BEARINGS SHOWN HEREON ARE ASSUMED AND ARE DISPLAYED FOR ANGULAR RELATIONSHIP ONLY.
- PARCEL LINES SHOWN HEREON ARE FOR GRAPHICAL REPRESENTATION ONLY.