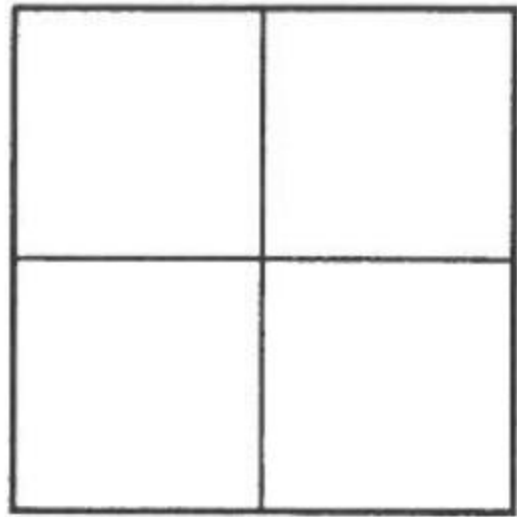


# CORNER RECORD

Agency Index \_\_\_\_\_

Document Number \_\_\_\_\_

**2017-1400A**City of UNINCORPORATED TERRITORYCounty of ORANGE, CaliforniaBrief Legal Description BC ON GINGHAM ST 65' NW OF BRIDLE PATH**CORNER TYPE**

Government Corner ☐ Control ☐  
Meander ☐ Property ☐  
Rancho ☐ Other ☒

Date of Survey MAY, 2017**COORDINATES (Optional)**

N. \_\_\_\_\_ E. \_\_\_\_\_  
Elevation \_\_\_\_\_  
Units Metric ☐ U.S. Survey Foot ☒  
Horizontal Datum \_\_\_\_\_  
Zone \_\_\_\_\_ Epoch Date \_\_\_\_\_  
Vertical Datum \_\_\_\_\_

☐ Complies with Public Resources Code §§8801-8819  
☐ Complies with Public Resources Code §§8890-8902

PLS Act Ref: ☐ 8765(d) ☒ 8771 ☐ 8773 ☐ Other: \_\_\_\_\_

Corner/  
Monument: ☒ Left as found ☐ Established ☐ Rebuilt ☒ Pre-Construction  
☐ Found and tagged ☐ Reestablished ☐ Referenced ☐ Post-Construction

Narrative of corner identified and monument as found, set, reset, replaced, or removed:

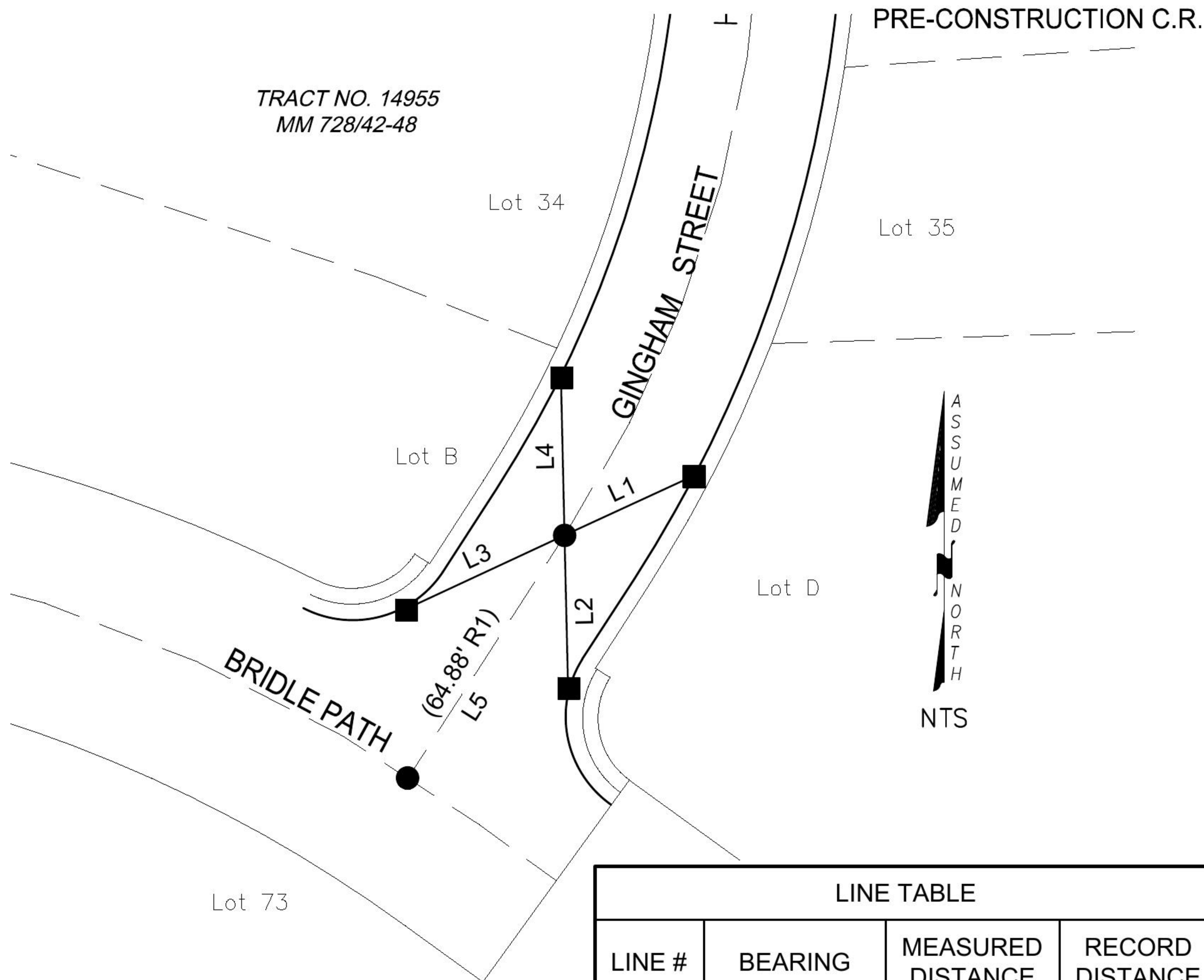
☒ See sheet #2 for description (s):**SURVEYOR'S STATEMENT**

This Corner Record was prepared by me or under my direction in conformance with  
the Professional Land Surveyors' Act on 1-8-18

Signed Jesom Moreno (P.L.S.) or R.C.E. No. 8478**COUNTY SURVEYOR'S STATEMENT**This Corner Record was received JUL 20 2017and examined and filed OCT 21 2019Signed Kevin R. Hills (P.L.S.) or R.C.E. No. 6617Title COUNTY SURVEYOR

County Surveyor's Comment \_\_\_\_\_





**LEGEND:**  
\* DISTANCE MEASURED  
VERIFIED IN FIELD

| LINE TABLE |             |                   |                 |
|------------|-------------|-------------------|-----------------|
| LINE #     | BEARING     | MEASURED DISTANCE | RECORD DISTANCE |
| L1         | N65°11'38"E | 31.81'            | (31.83')        |
| L2         | N01°15'45"W | 34.25'            | (34.25')        |
| L3         | N65°02'36"E | 39.36'            | (39.36')        |
| L4         | N01°17'40"W | 35.52' *          | (35.59')        |
| L5         | N32°51'46"E | 64.88'            | (64.88')        |

**RECORD REFERENCES:**  
(R1) ORANGE COUNTY CORNER RECORD 2001-1570

- MONUMENT NOTES:**
- FOUND LEAD & TACK, TAGGED "RCE 23956" ON TC.
  - FOUND GEAR SPIKE & WASHER, STAMPED "RCE 23956", FLUSH PER R1.

**NOTES:**

- BEARINGS SHOWN HEREON ARE ASSUMED AND ARE DISPLAYED FOR ANGULAR RELATIONSHIP ONLY.
- PARCEL LINES SHOWN HEREON ARE FOR GRAPHICAL REPRESENTATION ONLY.