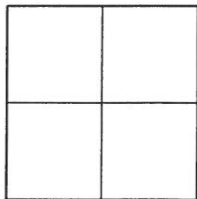


CORNER RECORD

Agency Index _____

Document Number _____

2017-1362ACity of UNINCORPORATED TERRITORYCounty of ORANGE, CaliforniaBrief Legal Description BEGINNING OF A CURVE ON BRONCO STREET, ± 164' SOUTH OF APACHE COURT**CORNER TYPE**

Government Corner ☐ Control ☐
Meander ☐ Property ☐
Rancho ☐ Other ☒

Date of Survey MAY 23, 2017**COORDINATES (Optional)**

N. _____ E. _____

Elevation _____

Units Metric ☐ U.S. Survey Foot ☒

Horizontal Datum _____

Zone _____ Epoch Date _____

Vertical Datum _____

☐ Complies with Public Resources Code §§8801-8819☐ Complies with Public Resources Code §§8890-8902PLS Act Ref: ☐ 8765(d) ☒ 8771 ☐ 8773 ☐ Other: _____

Corner/
Monument: ☒ Left as found ☐ Established ☐ Rebuilt ☒ Pre-Construction
☐ Found and tagged ☐ Reestablished ☐ Referenced ☐ Post-Construction

Narrative of corner identified and monument as found, set, reset, replaced, or removed:

☒ See sheet #2 for description (s):**SURVEYOR'S STATEMENT**

This Corner Record was prepared by me or under my direction in conformance with
the Professional Land Surveyors' Act on 10-26-17

Signed [Signature] (P.L.S.) or R.C.E. No. 8478**COUNTY SURVEYOR'S STATEMENT**This Corner Record was received JUL 10 2017and examined and filed JAN 19 2018Signed [Signature] (P.L.S.) or R.C.E. No. 6617Title COUNTY SURVEYOR

County Surveyor's Comment _____

PRE-CONSTRUCTION C.R.

RECORD REFERENCES:

(R1) ORANGE COUNTY CORNER RECORD 1998-0463

MONUMENT NOTES:

● FOUND GEAR SPIKE & WASHER, STAMPED "RCE 23956", ACCEPTED AS 8" SPIKE & WASHER STAMPED "RCE 23956" PER R1, FLUSH IN AC.

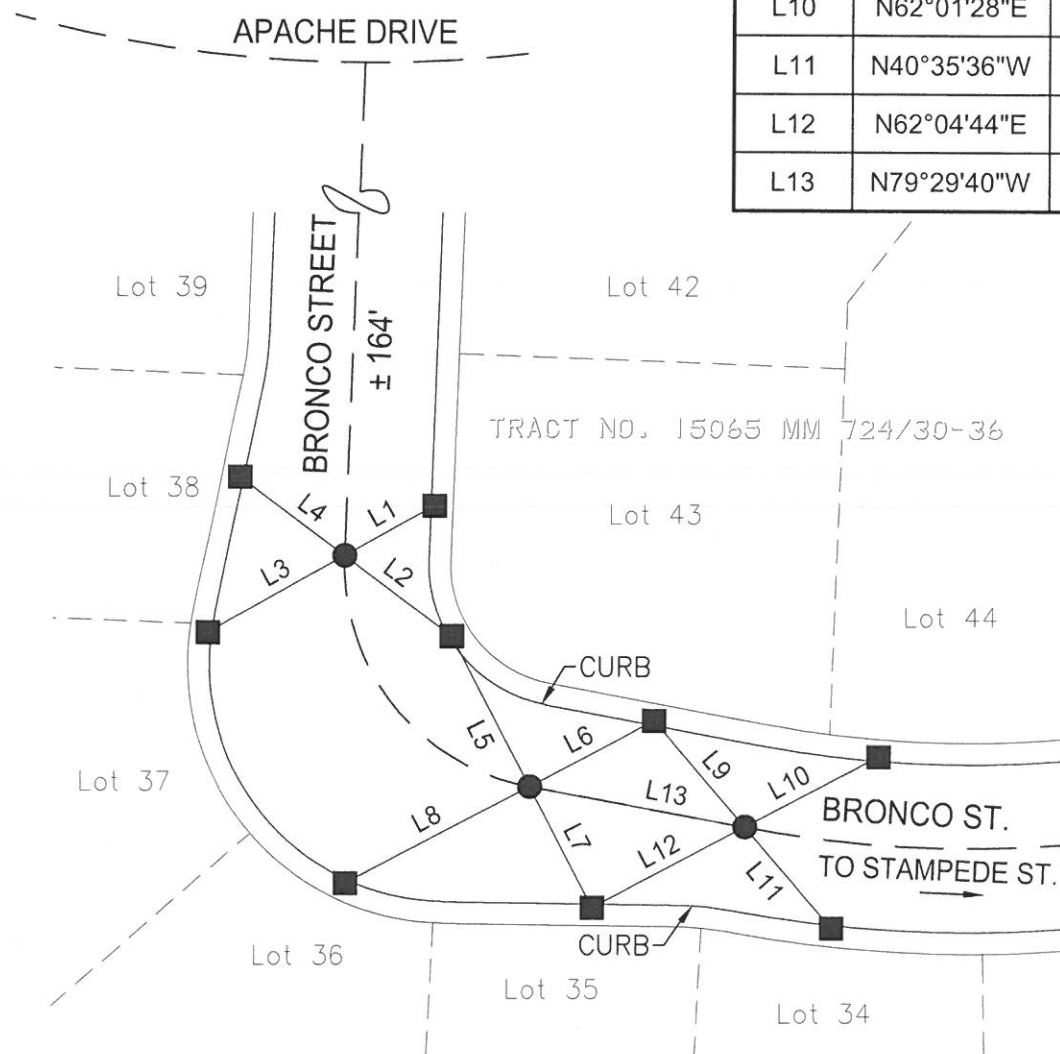
■ FOUND LEAD & TACK, TAGGED "RCE 23956" PER R1, ON TC.

LEGEND:

— REFERENCE LINE

* DISTANCE MEASURED VERIFIED IN FIELD

LINE TABLE			
LINE #	BEARING	MEASURED DISTANCE	RECORD DISTANCE
L1	N60°40'06"E	21.37'	(21.39)
L2	N53°14'20"W	27.80'*	(27.85')
L3	N60°43'28"E	32.69'*	(32.73')
L4	N53°15'29"W	27.35'	(27.37')
L5	N27°19'26"W	35.14'	(35.17')
L6	N61°56'19"E	29.33'*	(29.37')
L7	N27°17'44"W	28.38'	(28.40')
L8	N61°57'48"E	43.11'*	(43.17')
L9	N40°40'34"W	29.17'	(29.17')
L10	N62°01'28"E	31.43'*	(31.48')
L11	N40°35'36"W	27.76'*	(27.81')
L12	N62°04'44"E	36.08'	(36.10')
L13	N79°29'40"W	45.66'*	(45.71')



NOTES:

- BEARINGS SHOWN HEREON ARE ASSUMED AND ARE DISPLAYED FOR ANGULAR RELATIONSHIP ONLY.
- PARCEL LINES SHOWN HEREON ARE FOR GRAPHICAL REPRESENTATION ONLY.