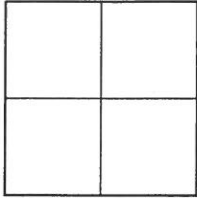


CORNER RECORD

Agency Index _____

Document Number _____

2017-1360ACity of UNINCORPORATED TERRITORYCounty of ORANGE, CaliforniaBrief Legal Description APPARENT RADIUS POINT OF CUL-DE-SAC ON STAMPEDE STREET**CORNER TYPE****COORDINATES (Optional)**

Government Corner ☐ Control ☐
Meander ☐ Property ☐
Rancho ☐ Other ☒

Date of Survey MAY 23, 2017

N. _____ E. _____

Elevation _____

Units Metric ☐ U.S. Survey Foot ☒

Horizontal Datum _____

Zone _____ Epoch Date _____

Vertical Datum _____

☐ Complies with Public Resources Code §§8801-8819☐ Complies with Public Resources Code §§8890-8902PLS Act Ref: ☐ 8765(d) ☒ 8771 ☐ 8773 ☐ Other: _____

Corner/
Monument: ☒ Left as found ☐ Established ☐ Rebuilt ☒ Pre-Construction
☐ Found and tagged ☐ Reestablished ☐ Referenced ☐ Post-Construction

Narrative of corner identified and monument as found, set, reset, replaced, or removed:

☒ See sheet #2 for description (s):**SURVEYOR'S STATEMENT**

This Corner Record was prepared by me or under my direction in conformance with
the Professional Land Surveyors' Act on 10-26-17

Signed  (P.L.S.) or R.C.E. No. 8478**COUNTY SURVEYOR'S STATEMENT**This Corner Record was received JUL 10 2017and examined and filed JAN 19 2018Signed  (P.L.S.) or ~~R.C.E.~~ No. 6617Title COUNTY SURVEYOR

County Surveyor's Comment _____

PRE-CONSTRUCTION C.R.

TRACT NO. 15065; MM 724/30-36

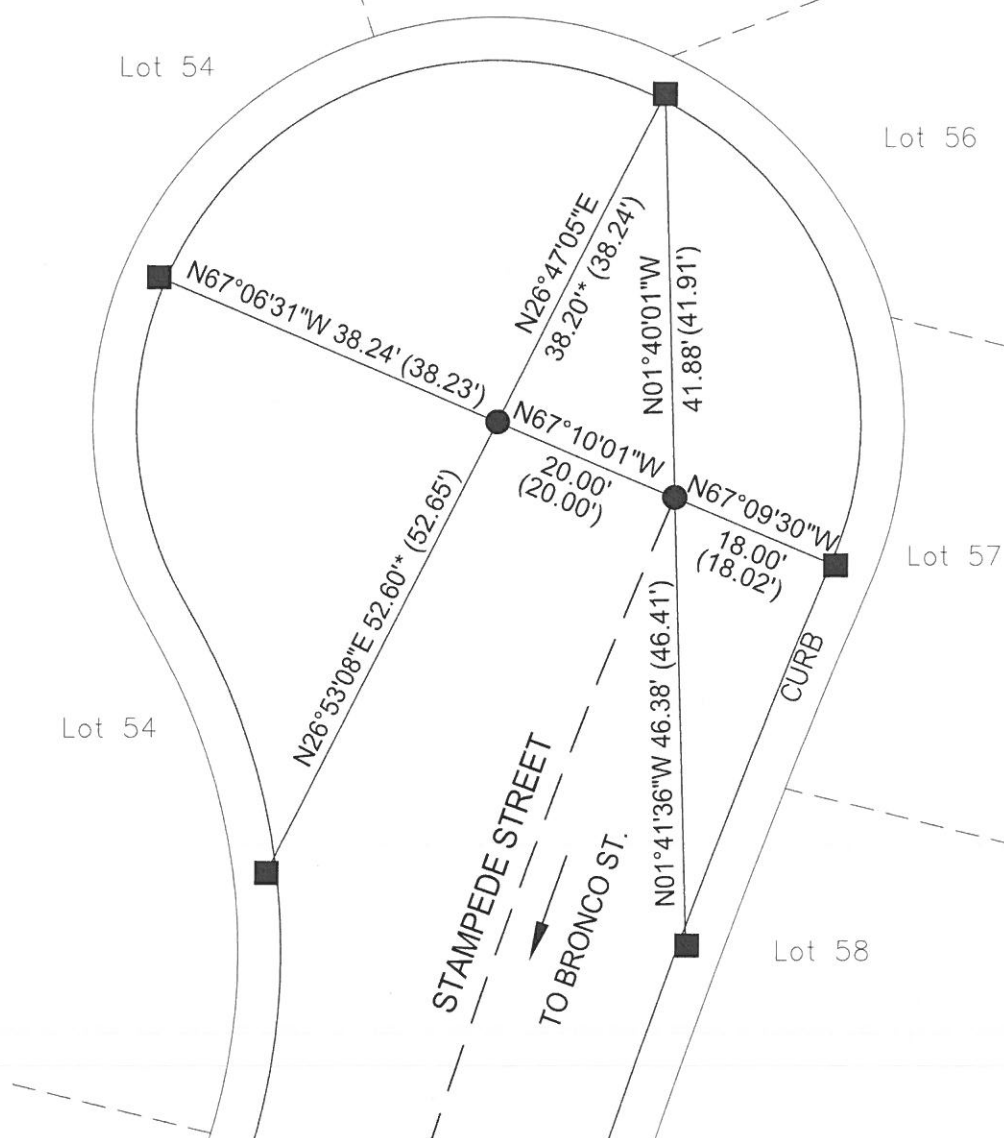
Lot 55

Lot 54

Lot 56

Lot 57

Lot 58

RECORD REFERENCES:

(R1) ORANGE COUNTY CORNER RECORD 1998-0463

MONUMENT NOTES:

- FOUND GEAR SPIKE & WASHER, STAMPED "RCE 23956", ACCEPTED AS 8" SPIKE & WASHER STAMPED "RCE 23956" PER R1, FLUSH IN AC.
- FOUND LEAD & TACK, TAGGED "RCE 23956" PER R1, ON TC.

LEGEND:

- REFERENCE LINE
- * DISTANCE MEASURED VERIFIED IN FIELD

NOTES:

- BEARINGS SHOWN HEREON ARE ASSUMED AND ARE DISPLAYED FOR ANGULAR RELATIONSHIP ONLY.
- PARCEL LINES SHOWN HEREON ARE FOR GRAPHICAL REPRESENTATION ONLY.