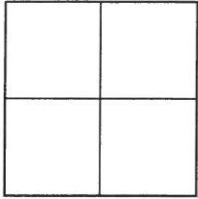


CORNER RECORD

Agency Index _____

Document Number _____

2017-1358ACity of UNINCORPORATED TERRITORYCounty of ORANGE, CaliforniaBrief Legal Description INTERSECTION OF STAMPEDE STREET AND DROVER COURT**CORNER TYPE**

Government Corner ☐ Control ☐
Meander ☐ Property ☐
Rancho ☐ Other ☒

Date of Survey MAY 23, 2017**COORDINATES (Optional)**

N. _____ E. _____

Elevation _____

Units Metric ☐ U.S. Survey Foot ☒

Horizontal Datum _____

Zone _____ Epoch Date _____

Vertical Datum _____

☐ Complies with Public Resources Code §§8801-8819☐ Complies with Public Resources Code §§8890-8902PLS Act Ref: ☐ 8765(d) ☒ 8771 ☐ 8773 ☐ Other: _____

Corner/
Monument: ☒ Left as found ☐ Established ☐ Rebuilt ☒ Pre-Construction
☐ Found and tagged ☐ Reestablished ☐ Referenced ☐ Post-Construction

Narrative of corner identified and monument as found, set, reset, replaced, or removed:

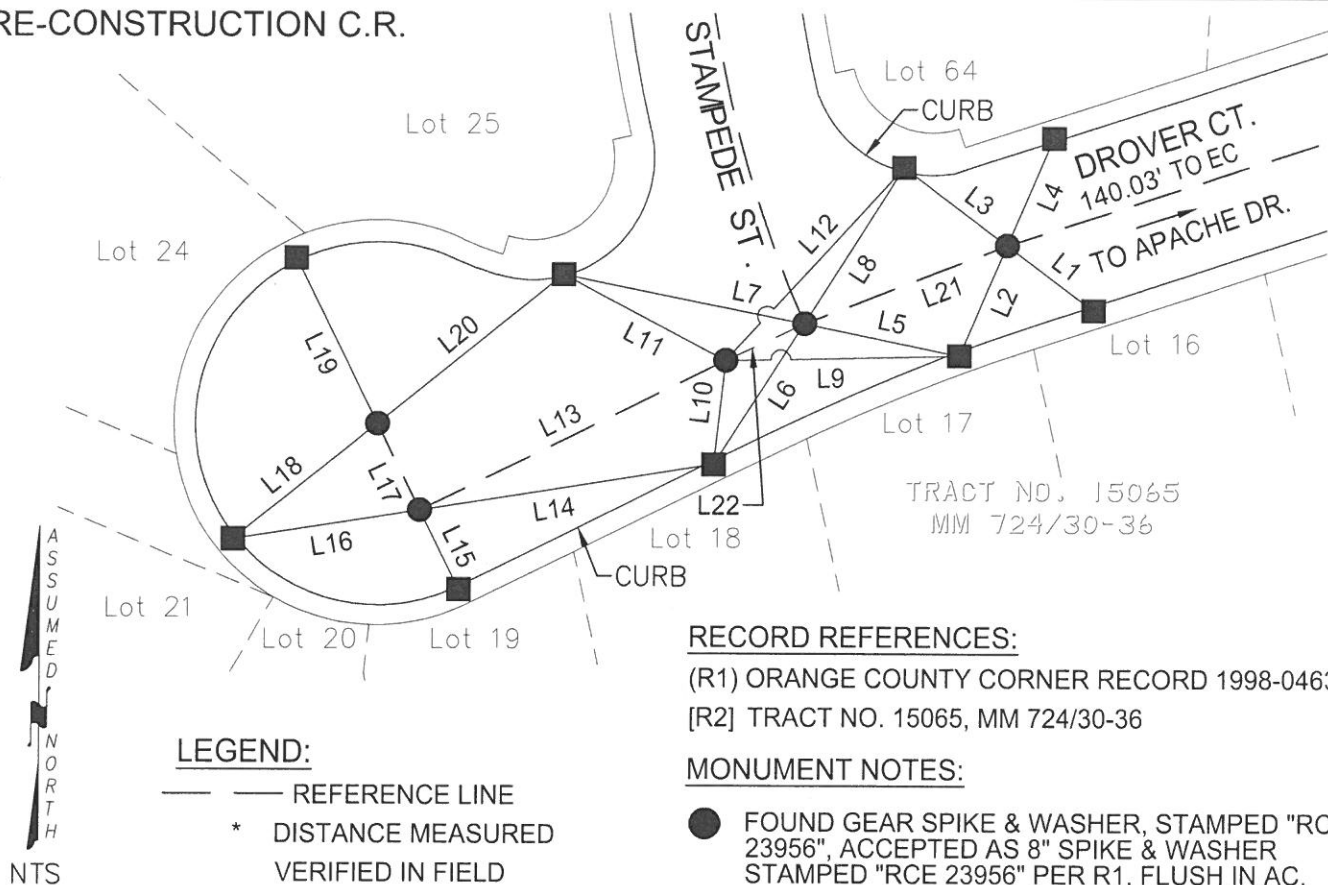
☒ See sheet #2 for description (s):**SURVEYOR'S STATEMENT**

This Corner Record was prepared by me or under my direction in conformance with
the Professional Land Surveyors' Act on 10-26-17

Signed  (P.L.S.) or R.C.E. No. 8478**COUNTY SURVEYOR'S STATEMENT**This Corner Record was received JUL 10 2017and examined and filed JAN 19 2018Signed  (P.L.S.) or R.C.E. No. 6617Title COUNTY SURVEYOR

County Surveyor's Comment _____

PRE-CONSTRUCTION C.R.



RECORD REFERENCES:

(R1) ORANGE COUNTY CORNER RECORD 1998-0463

[R2] TRACT NO. 15065, MM 724/30-36

MONUMENT NOTES:

- FOUND GEAR SPIKE & WASHER, STAMPED "RCE 23956", ACCEPTED AS 8" SPIKE & WASHER STAMPED "RCE 23956" PER R1, FLUSH IN AC.
- FOUND LEAD & TACK, TAGGED "RCE 23956" PER R1, ON TC.

LINE TABLE			
LINE #	BEARING	MEASURED DISTANCE	RECORD DISTANCE
L1	N53°02'47"W	22.37'	(22.39')
L2	N23°06'18"E	24.89'*	(24.82')
L3	N53°05'45"W	26.88'	(26.91')
L4	N23°04'38"E	24.33'	(24.31')
L5	N78°33'15"W	32.99'	(33.01')
L6	N32°22'51"E	34.57'*	(34.61')
L7	N78°34'49"W	51.02'	(51.02')
L8	N32°23'27"E	38.47'	(38.47')
L9	N88°41'44"E	48.53'	(48.56')
L10	N06°11'35"E	21.67'*	(21.72')
L11	N62°18'38"W	38.20'	(38.19')

LINE TABLE			
LINE #	BEARING	MEASURED DISTANCE	RECORD DISTANCE
L12	N42°30'16"E	54.45'*	(54.39')
L13	N63°45'26"E	70.71'	(70.74')
L14	N80°57'17"E	61.86'	(61.88')
L15	N26°18'34"W	18.32'*	(18.36')
L16	N81°05'41"E	39.07'	(39.08')
L17	N26°16'22"W	20.00'	(20')
L18	N51°07'49"E	38.21'*	(38.25')
L19	N26°13'06"W	38.31'	(38.34')
L20	N51°02'24"E	49.45'*	(49.55')
L21	N68°46'55"E	45.17'	[45.16']calc.
L22	N64°41'05"E	17.89'	(17.92')

NOTES:

- BEARINGS SHOWN HEREON ARE ASSUMED AND ARE DISPLAYED FOR ANGULAR RELATIONSHIP ONLY.
- PARCEL LINES SHOWN HEREON ARE FOR GRAPHICAL REPRESENTATION ONLY.