

CORNER RECORD

Agency Index

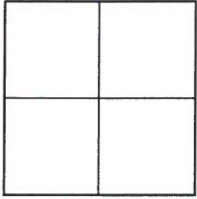
Document Number

2017-1357A

City of UNINCORPORATED TERRITORY

County of ORANGE, California

Brief Legal Description BEGINNING OF A CURVE ON DROVER COURT, ± 185' EAST OF STAMPEDE STREET



CORNER TYPE

Government Corner ☐ Control ☐
Meander ☐ Property ☐
Rancho ☐ Other ☒

Date of Survey MAY 23, 2017

COORDINATES (Optional)

N. _____ E. _____

Elevation _____

Units Metric ☐ U.S. Survey Foot ☒

Horizontal Datum _____

Zone _____ Epoch Date _____

Vertical Datum _____

☐ Complies with Public Resources Code §§8801-8819

☐ Complies with Public Resources Code §§8890-8902

PLS Act Ref: ☐ 8765(d) ☒ 8771 ☐ 8773 ☐ Other:

Corner/
Monument: ☒ Left as found ☐ Established ☐ Rebuilt ☒ Pre-Construction
☐ Found and tagged ☐ Reestablished ☐ Referenced ☐ Post-Construction

Narrative of corner identified and monument as found, set, reset, replaced, or removed:

☒ See sheet #2 for description (s):

SURVEYOR'S STATEMENT

This Corner Record was prepared by me or under my direction in conformance with
the Professional Land Surveyors' Act on 10-26-17

Signed *Jesom Moreno* (P.L.S.) or R.C.E. No. 8478



COUNTY SURVEYOR'S STATEMENT

This Corner Record was received JUL 10 2017

and examined and filed JAN 19 2018

Signed *Kevin R. Hills* (P.L.S.) or ~~R.C.E.~~ No. 6617

Title COUNTY SURVEYOR

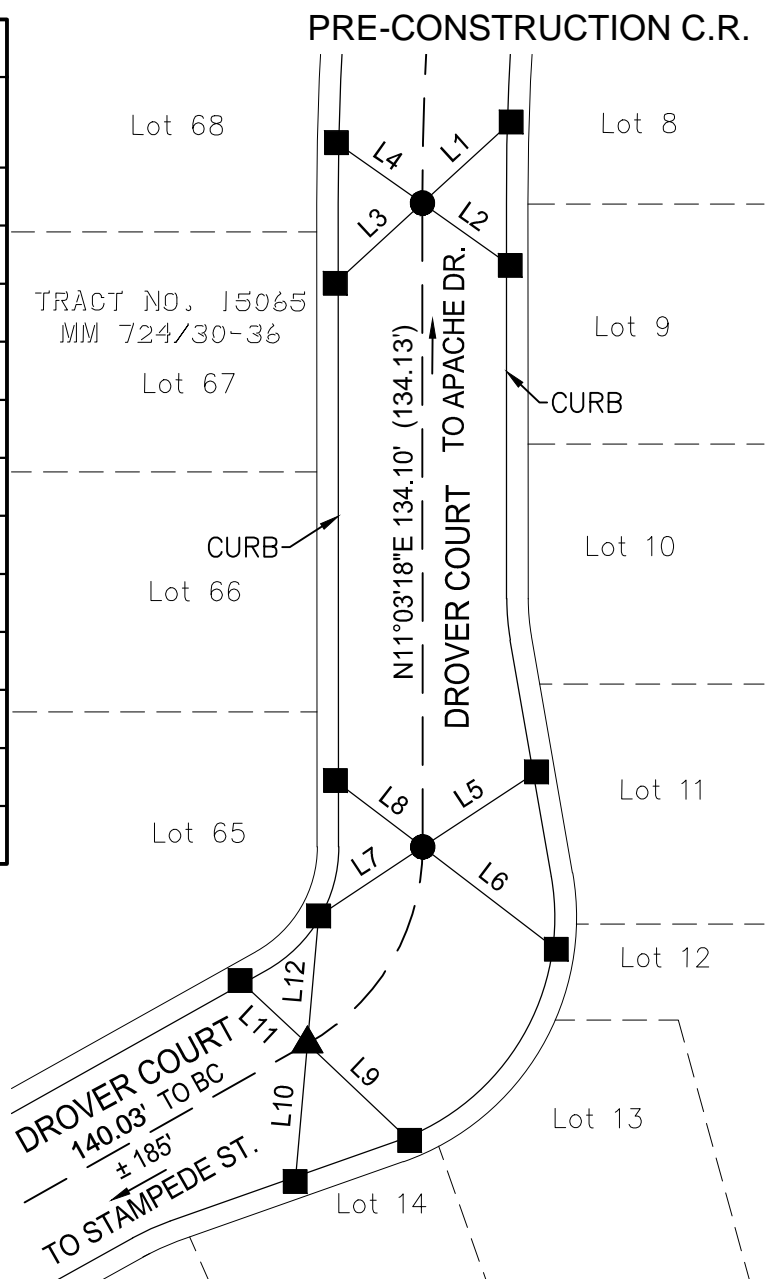


County Surveyor's Comment _____

LINE TABLE			
LINE #	BEARING	MEASURED DISTANCE	RECORD DISTANCE
L1	N58°38'52"E	25.10'	(25.15')
L2	N43°39'01"W	22.42'	(22.44')
L3	N58°30'36"E	24.62'	(24.67')
L4	N43°43'23"W	21.91'	(21.98')
L5	N67°43'10"E	28.41'	(28.46')
L6	N41°30'45"W	35.05'	(35.09')
L7	N67°32'08"E	25.99'	(25.99')
L8	N41°37'17"W	22.84'	(22.91')
L9	N35°35'49"W	29.30'	(29.32')
L10	N16°07'28"E	28.75'	(28.77')
L11	N35°40'19"W	19.24'	(19.22')
L12	N16°07'46"E	26.76'	(26.82')

LEGEND:

- REFERENCE LINE
 * DISTANCE MEASURED
 VERIFIED IN FIELD

**RECORD REFERENCES:**

(R1) ORANGE COUNTY CORNER RECORD 1998-0463

MONUMENT NOTES:

- FOUND GEAR SPIKE & WASHER, STAMPED "RCE 23956", ACCEPTED AS 8" SPIKE & WASHER STAMPED "RCE 23956" PER R1, FLUSH IN AC.
- FOUND LEAD & TACK, TAGGED "RCE 23956" PER R1, ON TC.
- ▲ FOUND SPIKE SHAFT, ACCEPTED AS 8" SPIKE & WASHER STAMPED "RCE 23956" PER R1, DOWN 0.1' IN AC.

NOTES:

- BEARINGS SHOWN HEREON ARE ASSUMED AND ARE DISPLAYED FOR ANGULAR RELATIONSHIP ONLY.
- PARCEL LINES SHOWN HEREON ARE FOR GRAPHICAL REPRESENTATION ONLY.