

# CORNER RECORD

Block: 5259, Module: 10

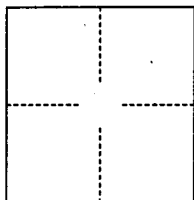
WM 40E

Document Number 98-465

City of UNINCORPORATED

County of ORANGE, California

Brief Legal Description TIES FOR 15068



## CORNER TYPE

Government Corner ☐ Control ☐  
 Meander ☐ Property ☒  
 Rancho ☐ Other ☐  
 Date of Survey SEPTEMBER 23, 1998

## COORDINATES (Optional)

N. \_\_\_\_\_  
 E. \_\_\_\_\_  
 Zone \_\_\_\_\_ Datum \_\_\_\_\_  
 Elev. \_\_\_\_\_

Corner — Left as found ☐ Found and tagged ☐ Established ☒ Reestablished ☐ Rebuilt ☐

Identification and type of corner found: Evidence used to identify or procedure used to establish or reestablish the corner:

SET SPIKE AND WASHER, R.C.E. 23956 AT THE CENTERLINE OF THE STREETS IN THIS TRACT ON  
ALTURA, LONGHORN STREET AND CHEROKEE STREET.

A description of the physical condition of the monument as found and as set or reset: \_\_\_\_\_

## SURVEYOR'S STATEMENT

This Corner Record was prepared by me or under my direction in conformance with the

Land Surveyors' Act on NOVEMBER 3RD, 19 98.

Signed Tom R. McGannon L.S. or R.C.E. Number 23956

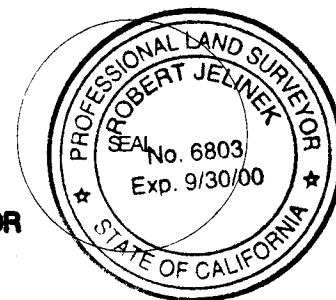


## COUNTY SURVEYOR'S STATEMENT

This Corner Record was received Dec. 23 19 98 and examined

and filed January 5th 19 99.

Signed Robert Jelinek Title DEPUTY COUNTY SURVEYOR



County Surveyor's Comment \_\_\_\_\_

HUNSAKER & ASSOCIATES, INC.

SEPTEMBER 23, 1998

LAND SURVEYOR: TOM R. McGANNON, R.C.E. 23956

**NOTE**

ALL TIE POINTS ARE  
L & T TAGGED R.C.E. 23956  
SET IN TOP OF CURB  
UNLESS OTHERWISE NOTED.

**LEGEND**

● INDICATES SET 8" SPIKE &  
WASHER STAMPED R.C.E. 23956  
UNLESS OTHERWISE NOTED.



HUNSAKER & ASSOCIATES, INC.

SEPTEMBER 23, 1998

**NOTE**

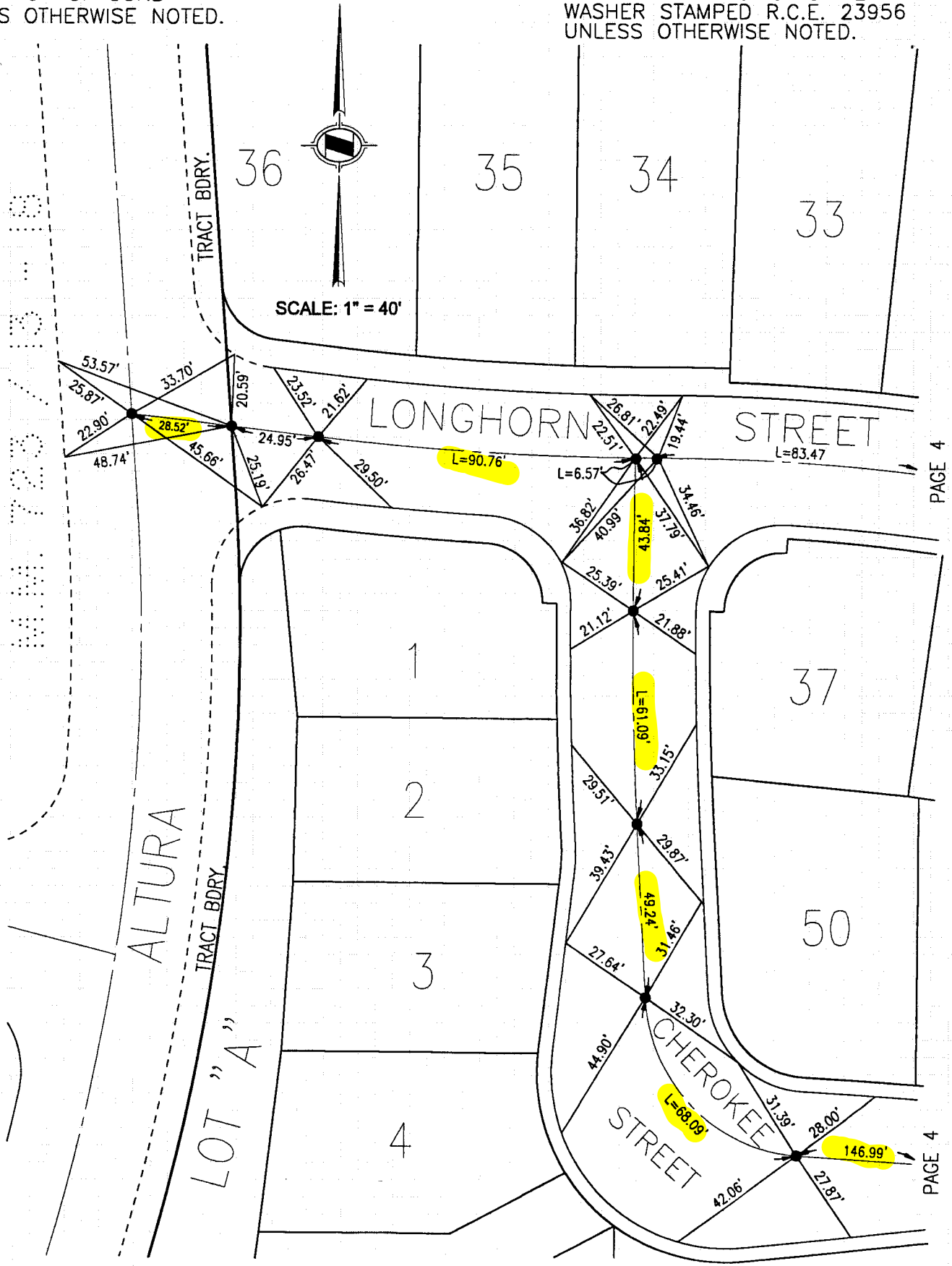
LAND SURVEYOR: TOM R. MCGANNON, R.C.E. 23956

ALL TIE POINTS ARE  
L & T TAGGED R.C.E. 23956  
SET IN TOP OF CURB  
UNLESS OTHERWISE NOTED.

**LEGEND**

● INDICATES SET 8" SPIKE &  
WASHER STAMPED R.C.E. 23956  
UNLESS OTHERWISE NOTED.

TRACT NO. 15068  
W.M. 723 / 12



HUNSAKER & ASSOCIATES, INC.

SEPTEMBER 23, 1998

ORANGE COUNTY SURVEYOR

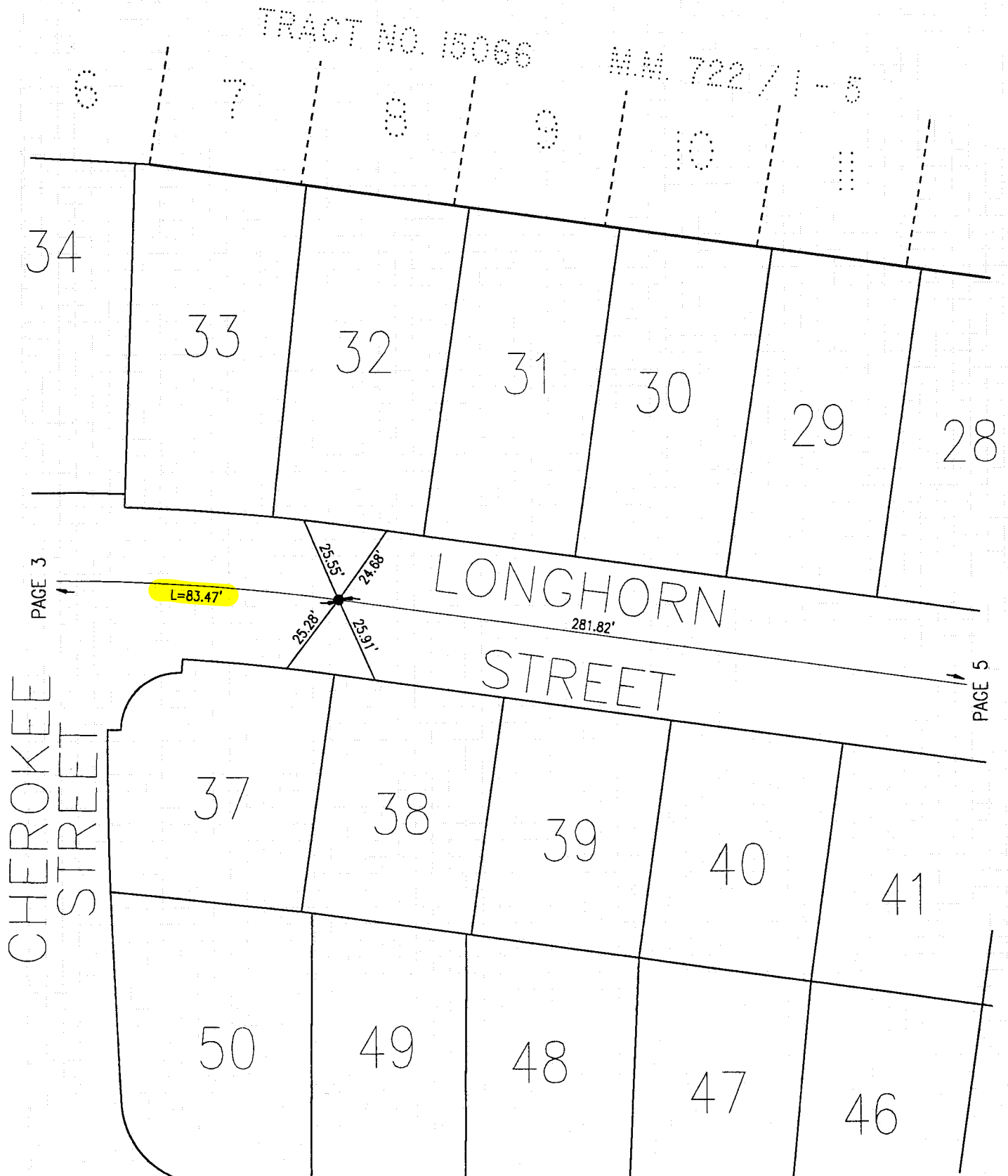
NOTE

LAND SURVEYOR: TOM R. McGANNON, R.C.E. 23956

ALL TIE POINTS ARE  
L & T TAGGED R.C.E. 23956  
SET IN TOP OF CURB  
UNLESS OTHERWISE NOTED.

LEGEND

● INDICATES SET 8" SPIKE &  
WASHER STAMPED R.C.E. 23956  
UNLESS OTHERWISE NOTED.



**NOTE**

LAND SURVEYOR: TOM R. McGANNON, R.C.E. 23956

ALL TIE POINTS ARE  
L & T TAGGED R.C.E. 23956  
SET IN TOP OF CURB  
UNLESS OTHERWISE NOTED.

**LEGEND**

● INDICATES SET 8" SPIKE &  
WASHER STAMPED R.C.E. 23956  
UNLESS OTHERWISE NOTED.

