

# CORNER RECORD

Block: 5258, Module: 10 09, 13, & 19

WM 40 E

Document Number

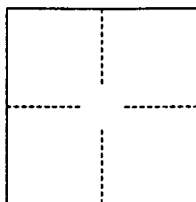
98-461

City of UNINCORPORATED

County of ORANGE

, California

Brief Legal Description TIES FOR TRACT 15063



## CORNER TYPE

Government Corner ☐

Meander ☐

Rancho ☐

Date of Survey SEPTEMBER 16, 1998

Control ☐

Property ☒

Other ☐

## COORDINATES

(Optional)

N. \_\_\_\_\_

E. \_\_\_\_\_

Zone \_\_\_\_\_ Datum \_\_\_\_\_

Elev. \_\_\_\_\_

Corner —

Left as found ☐

Found and tagged ☐

Established ☒

Reestablished ☐

Rebuilt ☐

Identification and type of corner found: Evidence used to identify or procedure used to establish or reestablish the corner:

SET SPIKE & WAHSE, R.C.E. 23956 AT THE CENTERLINE OF THE STREETS IN THIS TRACT ON

TUMBLEWEED STREET, BOOTSTRAP COURT, SUNDOWN DRIVE AND APACHE DRIVE.

A description of the physical condition of the monument as found and as set or reset: \_\_\_\_\_

## SURVEYOR'S STATEMENT

This Corner Record was prepared by me or under my direction in conformance with the

Land Surveyors' Act on NOVEMBER 3RD, 1998.

Signed Tom R. McGannon L.S. or R.C.E. Number 23956

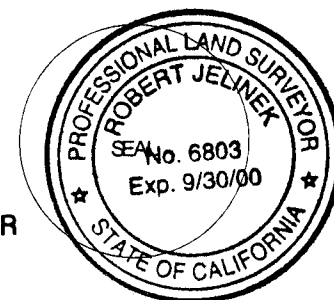


## COUNTY SURVEYOR'S STATEMENT

This Corner Record was received Dec. 23, 1998 and examined

and filed January 4th, 1999

Signed Robert Jelinek Title DEPUTY COUNTY SURVEYOR



County Surveyor's Comment \_\_\_\_\_

SURVEY OF

HUNSAKER & ASSOCIATES, INC.

SEPTEMBER 16, 1998

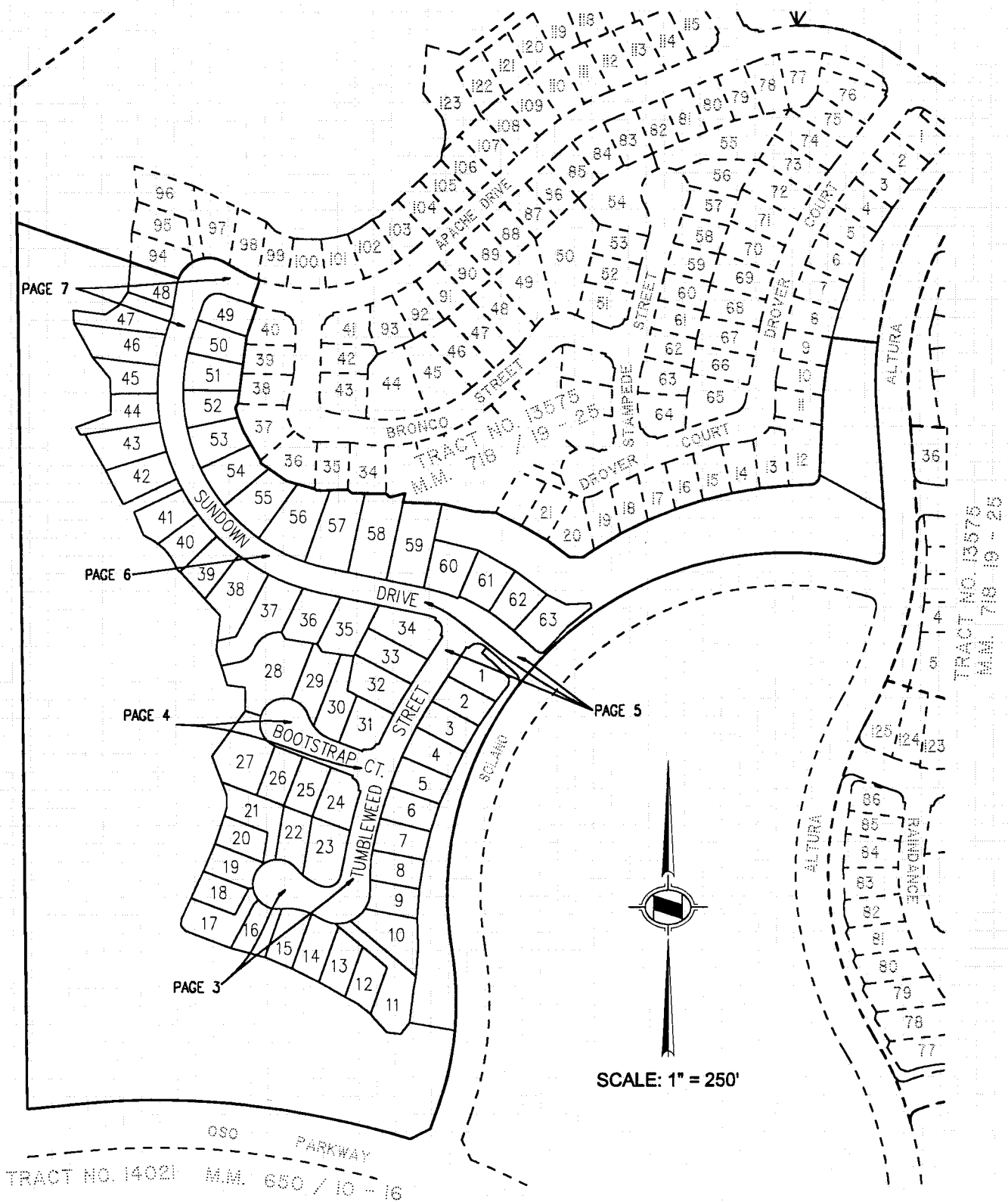
NOTE

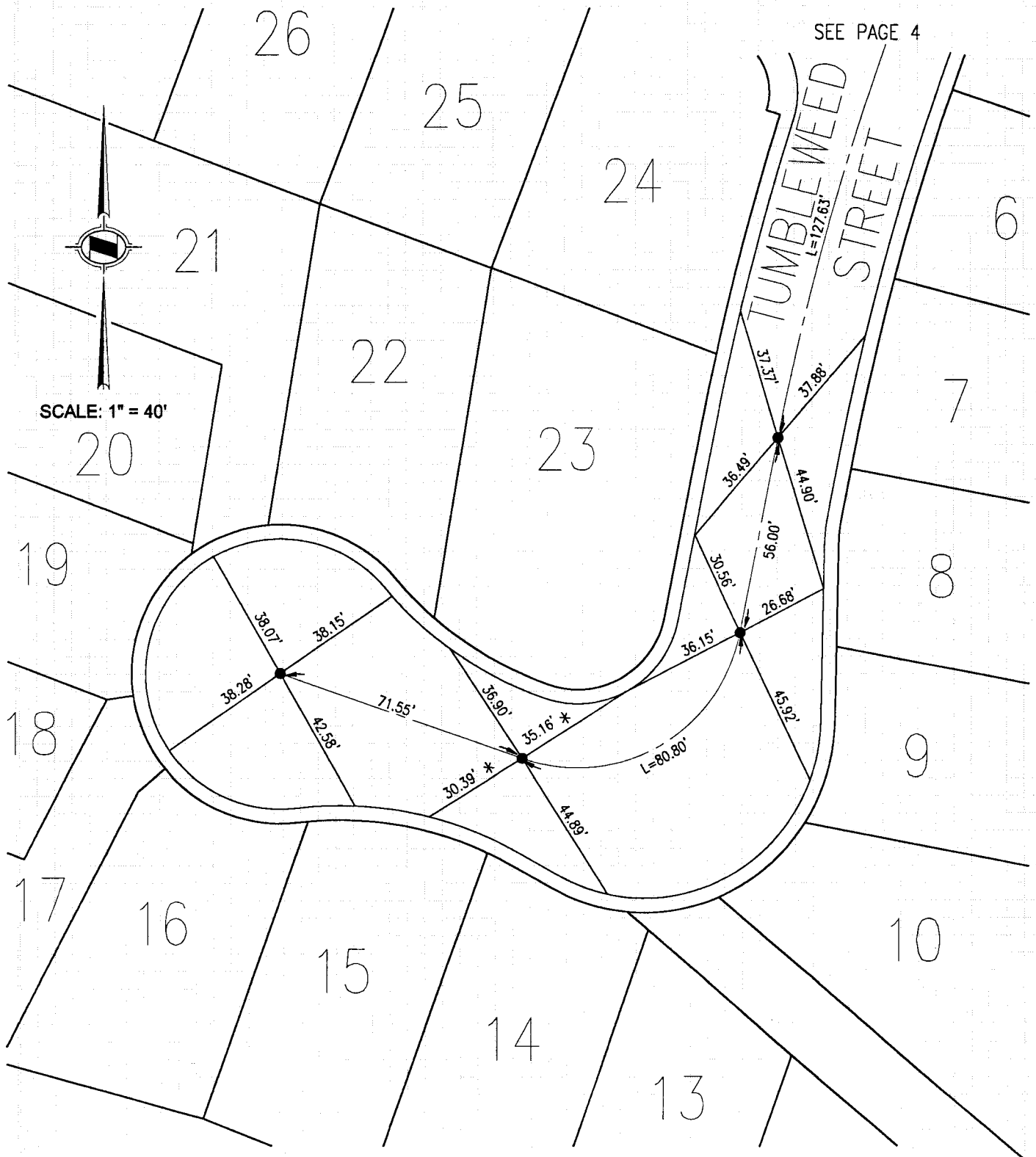
LAND SURVEYOR: TOM MCGANNON, R.C.E. 23956

ALL TIE POINTS ARE  
TANGENT OVER, L & T  
SET IN TOP OF CURB  
UNLESS OTHERWISE NOTED.

LEGEND

● INDICATES SET 8" SPIKE &  
WASHER STAMPED R.C.E. 23956  
UNLESS OTHERWISE NOTED.





HUNSAKER & ASSOCIATES, INC.

SEPTEMBER 16, 1998

ORANGE COUNTY SURVEYOR

SURVEYED BY

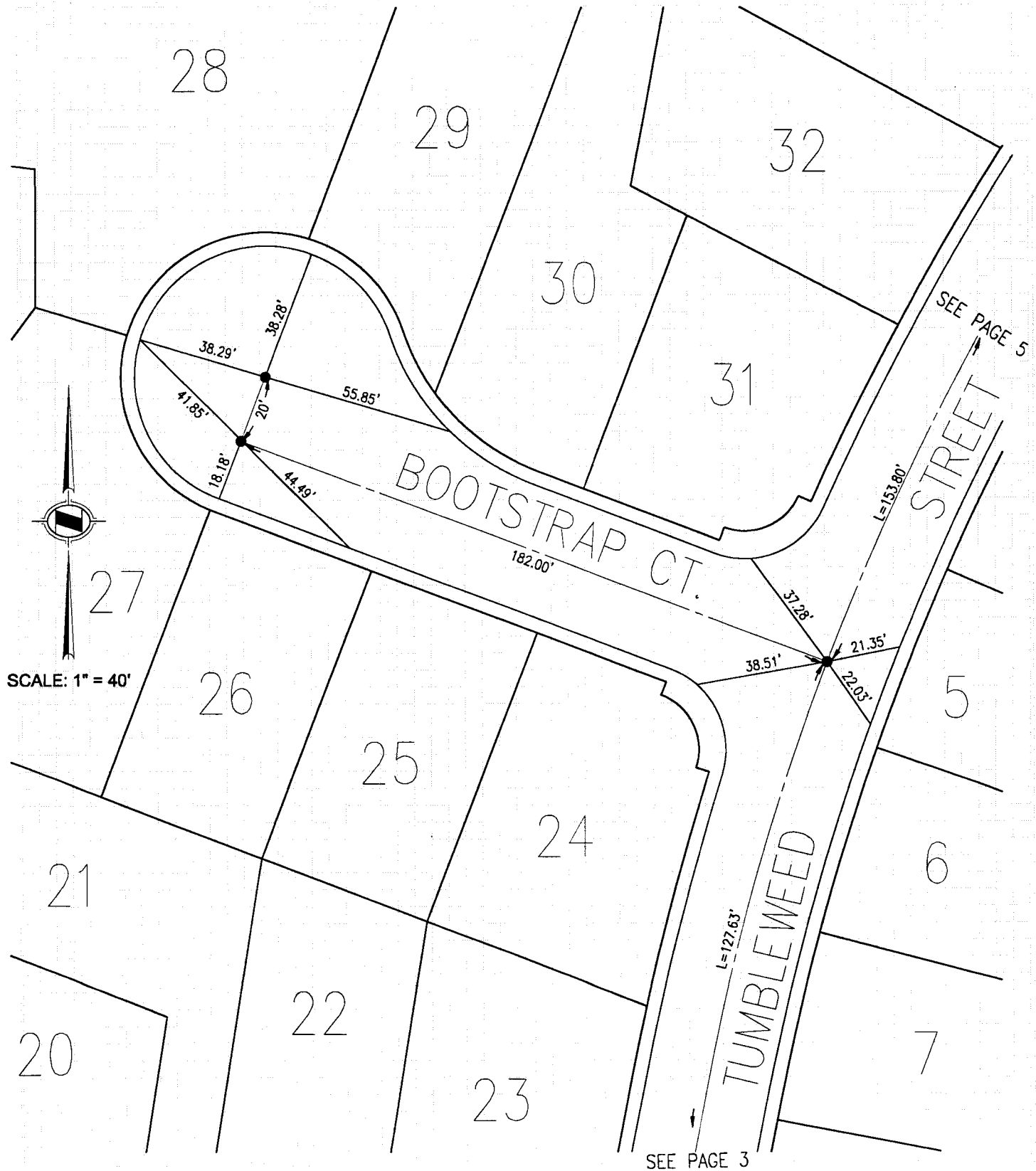
LAND SURVEYOR: TOM MCGANNON, R.C.E. 23956

**NOTE**

ALL TIE POINTS ARE  
TANGENT OVER, L & T  
SET IN TOP OF CURB  
UNLESS OTHERWISE NOTED.

**LEGEND**

● INDICATES SET 8" SPIKE &  
WASHER STAMPED R.C.E. 23956  
UNLESS OTHERWISE NOTED.



SURVEY OF

HUNSAKER & ASSOCIATES, INC.

SEPTEMBER 16, 1998

LAND SURVEYOR: TOM MCGANNON, R.C.E. 23956

PAGE

CHARGE COUNTY SURVEYOR

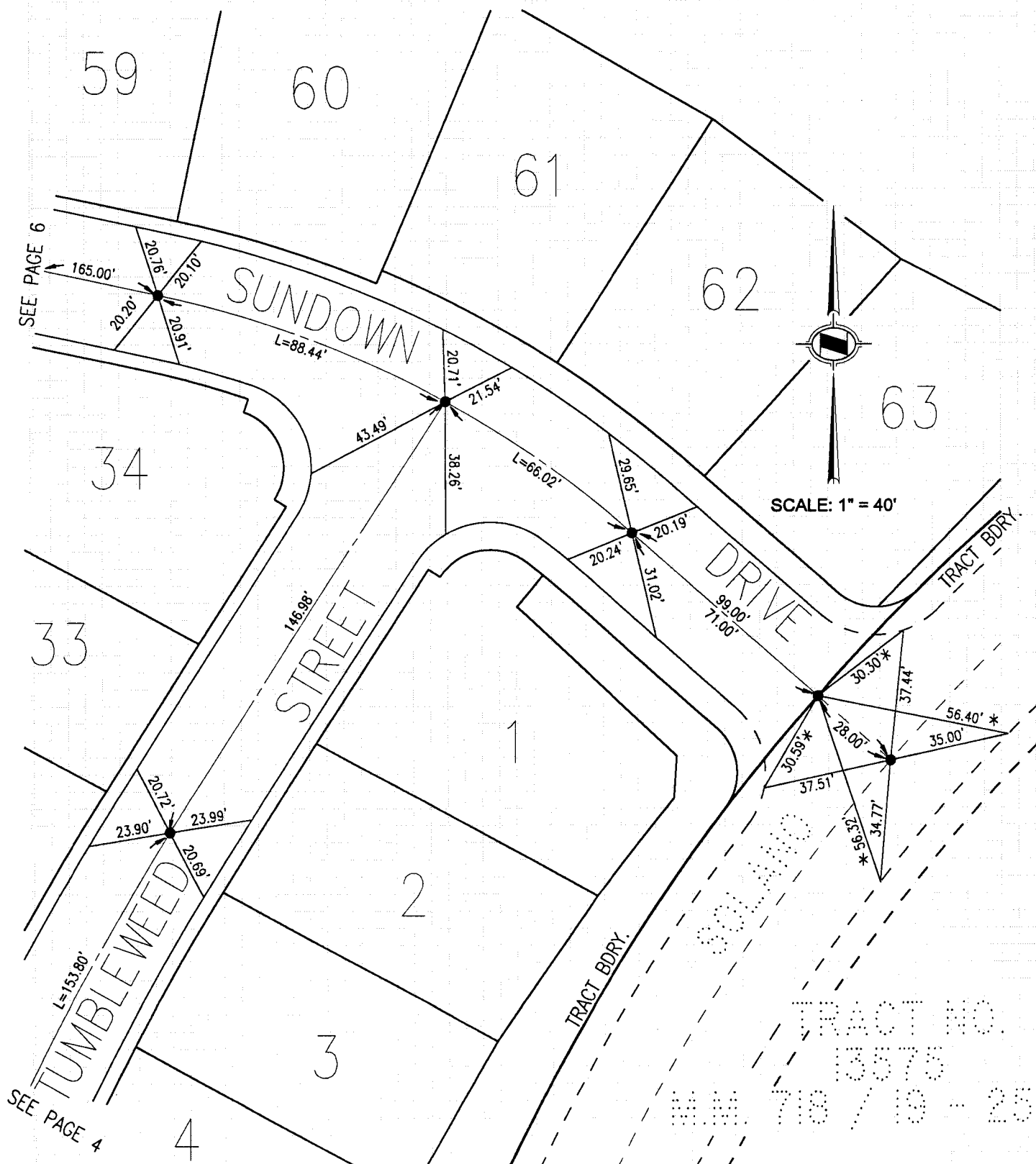
**NOTE**

ALL TIE POINTS ARE  
TANGENT OVER, L & T  
SET IN TOP OF CURB  
UNLESS OTHERWISE NOTED.

**LEGEND**

● INDICATES SET 8" SPIKE &  
WASHER STAMPED R.C.E. 23956  
UNLESS OTHERWISE NOTED.

\* INDICATES SET SWING TIE



HUNSAKER & ASSOCIATES, INC.

SEPTEMBER 16, 1998

ORANGE COUNTY SURVEYOR

SURVEYED BY

DATE

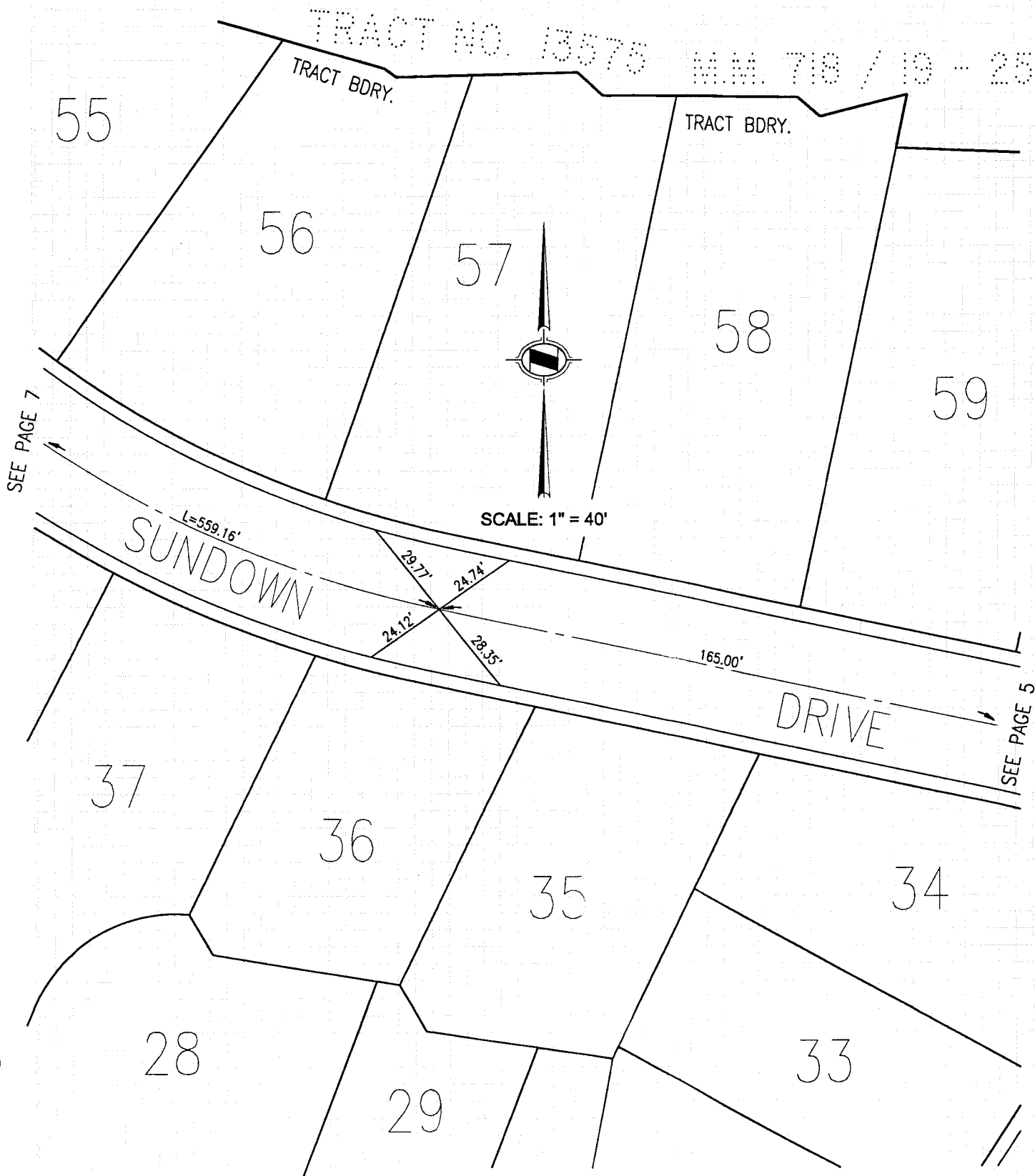
LAND SURVEYOR: TOM MCGANNON, R.C.E. 23956

NOTE

ALL TIE POINTS ARE  
TANGENT OVER, L & T  
SET IN TOP OF CURB  
UNLESS OTHERWISE NOTED.

LEGEND

● INDICATES SET 8" SPIKE &  
WASHER STAMPED R.C.E. 23956  
UNLESS OTHERWISE NOTED.



HUNSAKER & ASSOCIATES, INC.

SEPTEMBER 16, 1998

ORANGE COUNTY SURVEYOR

SURVEYED BY

DATE

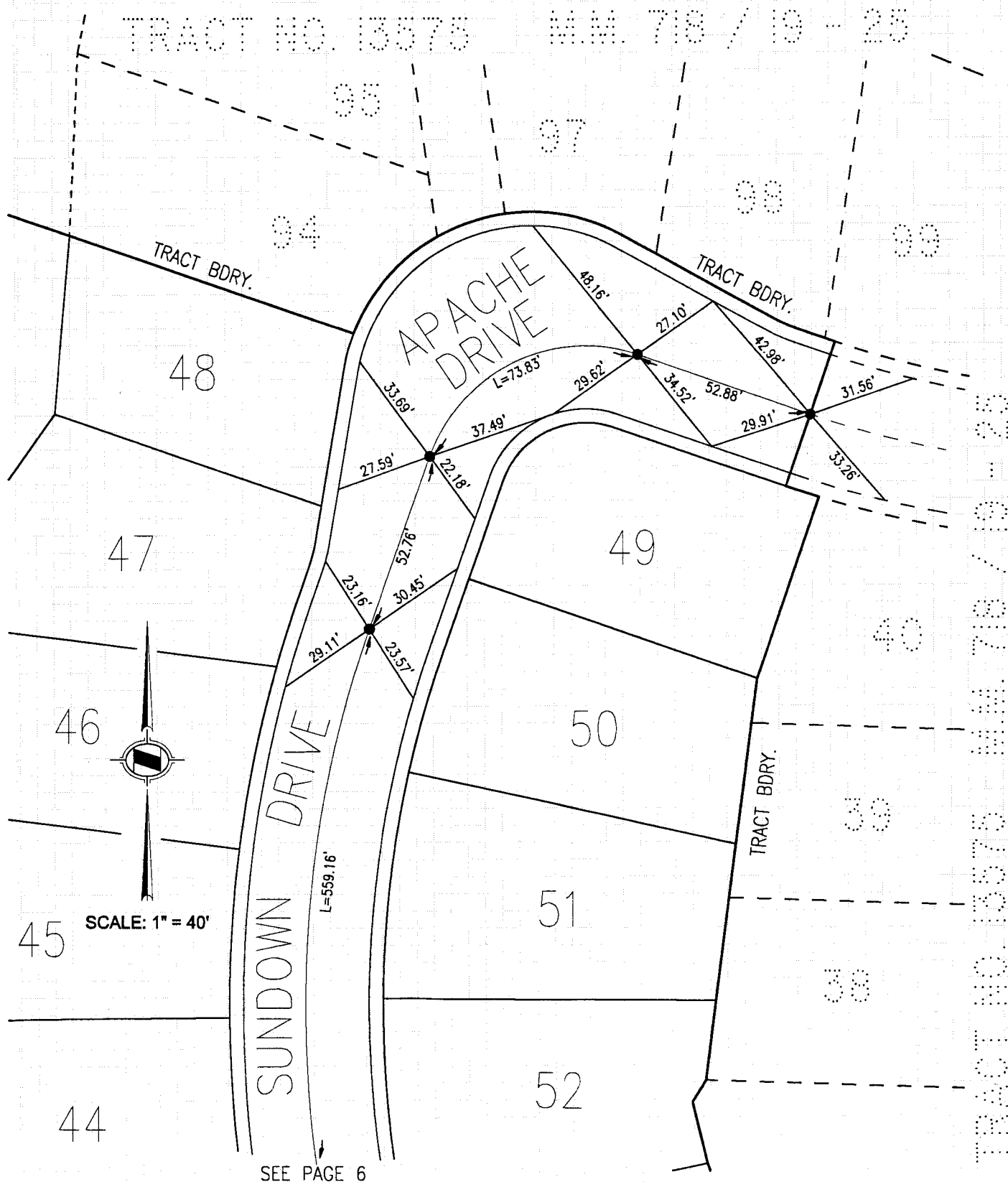
LAND SURVEYOR: TOM MCGANNON, R.C.E. 23956

NOTE

ALL TIE POINTS ARE  
TANGENT OVER, L & T  
SET IN TOP OF CURB  
UNLESS OTHERWISE NOTED.

LEGEND

● INDICATES SET 8" SPIKE &  
WASHER STAMPED R.C.E. 23956  
UNLESS OTHERWISE NOTED.



SEE PAGE 6