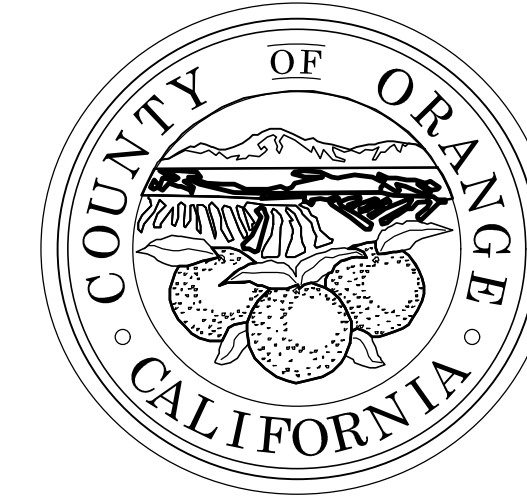
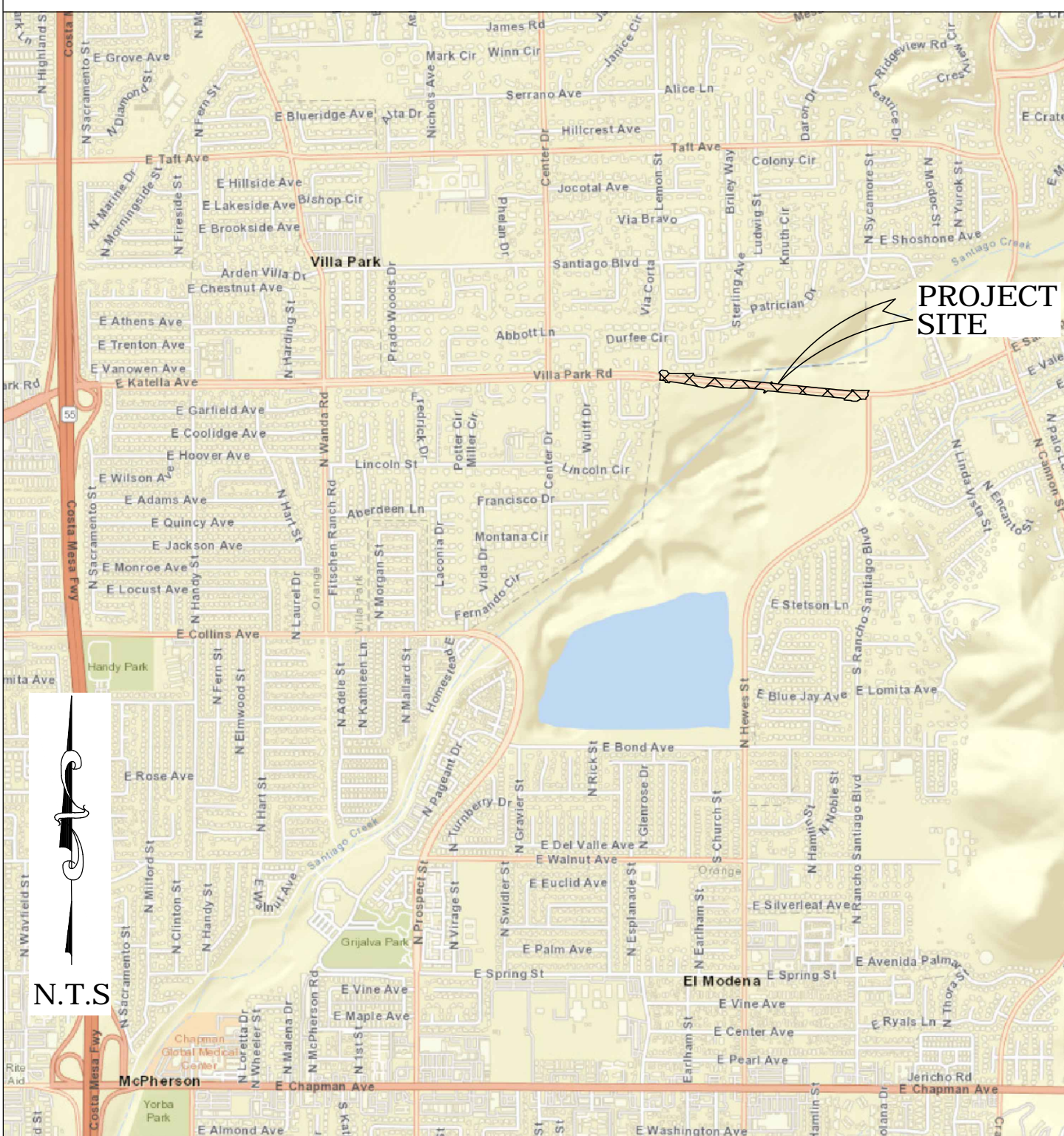




OC PUBLIC WORKS DEPARTMENT
JAMES TREADAWAY, DIRECTOR OF PUBLIC WORKS
KEVIN HILLS, COUNTY SURVEYOR
VILLA PARK RD.



LOCATION MAP



FOUND CGPS "CCCS"
N: 2261350.67
E: 6071417.81
THIS IS A CONTINUOUS GPS STATION
(CGPS) AND IS PART OF THE CALIFORNIA
SPATIAL REFERENCE NETWORK (CSRN),
FROM WHICH DATA CAN BE DOWNLOADED
HERE: [HTTP://SOPACCSRC.UCSD.EDU/](http://SOPACCSRC.UCSD.EDU/).

ROAD & STORM DRAIN REPAIR PROJECT



BASIS OF BEARINGS

THE BASIS OF BEARINGS FOR THIS SURVEY IS BASED ON THE CALIFORNIA COORDINATE SYSTEM (CCS83), ZONE VI, NAD 83, OCS (2017.50) EPOCH ADJUSTMENT, AS DETERMINED LOCALLY BY A LINE BETWEEN CONTINUOUS GLOBAL POSITIONING STATIONS CGPS STATIONS (OEOC) AND (CCCS) BEING NORTH 45°17'30" WEST AS DERIVED FROM THE COORDINATES PUBLISHED BY THE CALIFORNIA SPATIAL REFERENCE CENTER (CSRC) ALONG WITH DATA SHEETS ON FILE IN THE OFFICE OF THE ORANGE COUNTY SURVEYOR.

HORIZONTAL DATUM

COORDINATES SHOWN ARE BASED ON THE CALIFORNIA COORDINATE SYSTEM (CCS83), ZONE VI, NAD 83, OCS (2017.50) EPOCH ADJUSTMENT.
ALL DISTANCES SHOWN ARE GRID, UNLESS OTHERWISE NOTED. TO OBTAIN GROUND DISTANCES MULTIPLY GRID BY A COMBINED FACTOR OF 1.00002295.
THIS COMBINATION FACTOR WAS HELD AT: CP# 2700
N: 2242111.45' E: 6088135.70' EL: 350.72'
ALL DISTANCES ARE BASED ON THE U.S. SURVEY FOOT.

VERTICAL DATUM

O.C.S. BM. 3A-113-79 ELEV. = 351.211' YEAR LEVELED: 2010
NAVD 1988 (O.C.S. 1995 ADJUSTMENT)
DESCRIPTION: FOUND 3 3/4" OCS ALUMINUM BENCHMARK DISK STAMPED "3A-113-79", SET IN THE TOP OF A 6 IN. BY 6 IN. CONCRETE POST. MONUMENT IS LOCATED IN THE SOUTHEASTERLY PORTION OF THE INTERSECTION OF VILLA PARK ROAD AND LEMON STREET, 49.6 FT. SOUTHERLY OF THE CENTERLINE OF VILLA PARK ROAD AND 4.9 FT. EASTERLY OF THE PROLONGATION OF THE CENTERLINE OF LEMON POST MONUMENT IS SET UP 0.4 FT. ABOVE THE SIDEWALK

PURPOSE OF SURVEY

THE PURPOSE OF THIS SURVEY IS TO PROVIDE TOPOGRAPHY, RIGHT OF WAY, EASEMENT, AND BOUNDARY ESTABLISHMENT IN CONJUNCTION WITH PROPOSED IMPROVEMENTS FOR THIS PROJECT.

SHEET INDEX

SHEET	NO.	DESCRIPTION
1	1	TITLE SHEET
2-3	2-3	BOUNDARY MAP
4-7	4-7	TOPOGRAPHIC MAP

BASIS OF STATIONING

THE BASIS OF STATIONING IS 13+28.27 HELD AT THE CENTERLINE INTERSECTION OF VILLA PARK ROAD & LEMON STREET PER "PLANS FOR THE DRAINAGE MODIFICATIONS ON VILLA PARK ROAD & SANTIAGO CREEK "W.O. #R08625" DATED APRIL 1985.

SENIOR LAND SURVEYOR'S CERTIFICATE:

THIS MAP CORRECTLY REPRESENTS A SURVEY MADE BY ME OR UNDER MY DIRECTION IN CONFORMANCE WITH REQUIREMENTS OF THE PROFESSIONAL LAND SURVEYOR'S ACT; THIS 16 DAY OF SEPTEMBER, 2021.



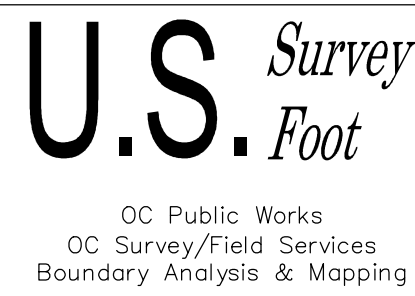
MICHAEL KUBISTY, PLS. SENIOR LAND SURVEYOR

DEPUTY COUNTY SURVEYOR'S STATEMENT:

THIS MAP HAS BEEN EXAMINED IN ACCORDANCE WITH THE PROFESSIONAL LAND SURVEYOR'S ACT; THIS 16 DAY OF SEPTEMBER, 2021.



WADE WEAVER, PLS. DEPUTY COUNTY SURVEYOR



TOPOGRAPHIC MAPPING PROJECT

COUNTY OF ORANGE OC PUBLIC WORKS OC SURVEY/FIELD SERVICES/BOUNDARY ANALYSIS & MAPPING			
VILLA PARK RD. ROAD & STORM DRAIN REPAIR PROJECT			
TITLE SHEET			
PROJECT LIMITS: FROM HEWES ST TO LEMON ST		SHEET NO.	
DATE OF SURVEY: 08/03/2021		BY: J. RUSSO & PARTY	
MAPPING		BY: I. ISLAS	
OFFICE CHECK		BY: J. MORENO, PLS	
FIELD CHECK		BY: J. RUSSO	
SCALE: N.T.S.		W.O. #ER19312	
FILE: VILLA PARK ROAD_TOPO_2021.DWG		FILE #2021PW-ENG0004	
MARK	DATE	ITEM	
REVISIONS			

MONUMENT NOTES

- 1

FOUND GEAR SPIKE & WASHER STAMPED "LS 5411", NO REFERENCE, IN LIEU OF LEAD TACK & TAG STAMPED "LS 5563" PER (R15), FLUSH IN AC, ACCEPTED AS THE INTERSECTION OF CENTER DR. AND SANTIAGO BLVD.
- 2

FOUND GEAR SPIKE & WASHER STAMPED "LS 5411", NO REFERENCE, IN LIEU OF GEAR SPIKE & WASHER STAMPED "LS 5563" PER (R16), FLUSH IN AC, ACCEPTED AS THE NE CORNER OF LOT 5 OF (R1) PER (R2). HELD FOR POINT IN THE CENTERLINE OF SANTIAGO BLVD.
- 3

FOUND SPIKE W/ NO WASHER PER (R3), DN 0.2' IN AC, ACCEPTED AS POINT IN THE CENTERLINE OF SANTIAGO AVE. AND S16°21'03"E 0.04' FROM THE CENTERLINE E.C. OF SANTIAGO AVE.
- 4

FOUND 1" IP & TAG STAMPED "LS 4279" PER (R4), DN 1.0', ACCEPTED AS AN ANGLE POINT IN THE CENTERLINE OF SANTIAGO BLVD.
- 5

FOUND GEAR SPIKE & WASHER STAMPED "RCE 19442" PER (R7), FLUSH IN AC, ACCEPTED AS THE CENTERLINE INTERSECTION CENTER DR. AND VILLA PARK RD.
- 6

FOUND GEAR SPIKE & WASHER STAMPED "RCE 19442" PER (R8), FLUSH IN AC, N34°18'54"E 0.08' FROM THE CENTERLINE INTERSECTION OF PARK VILLA RD. AND VILLA PARK RD.
- 7

FOUND BOAT SPIKE & OCS WASHER PER (R9), DN 0.2' IN AC, ACCEPTED AS THE INTERSECTION OF LEMON ST. AND VILLA PARK RD.
- 8

FOUND 2" IP & OCS WASHER PER (R10), DN 2' IN OCS WELL MONUMENT, ACCEPTED AS POINT IN THE CENTERLINE OF VILLA PARK RD. AND N84°22'03" 0.26' FROM THE CENTERLINE E.C. OF VILLA PARK RD.
- 9

FOUND HEX BAR PER (R10), DN 1.6' IN OCS WELL MONUMENT, ACCEPTED AS THE CENTERLINE INTERSECTION OF HEWES ST. AND VILLA PARK RD.
- 10

FOUND 2-1/4" BRASS CAP STAMPED "CITY OF ORANGE ENGINEERING" PER (R2), DN 1.8' IN OCS WELL MONUMENT, ACCEPTED AS POINT IN THE CENTERLINE OF SANTIAGO CANYON RD.
- 11

FOUND LEAD TACK & TAG STAMPED "LS 4224" PER (R11), FLUSH ON TOP OF CONCRETE WALL, ACCEPTED AS THE INTERSECTION OF THE S'LY RIGHT OF WAY OF VILLA PARK RD. AND W'LY LINE OF LOT 7 OF (R1).
- 12

FOUND 2-1/2" BRASS CAP STAMPED "ORANGE COUNTY SURVEYOR" PER (R2), DN 0.5' IN DIRT, ACCEPTED AS POINT IN N'LY RIGHT OF WAY OF VILLA PARK RD.
- 13

FOUND 2-1/2" BRASS CAP STAMPED "ORANGE COUNTY SURVEYOR" PER (R2), DN 0.4' IN DIRT, ACCEPTED AS POINT IN N'LY RIGHT OF WAY B.C. OF VILLA PARK RD.
- 14

FOUND LEAD TACK & WASHER STAMPED "ORANGE COUNTY SURVEYOR" PER (R2), FLUSH IN CONCRETE, ACCEPTED AS POINT IN THE S'LY RIGHT OF WAY OF E.C. VILLA PARK RD.
- 15

FOUND RAIL ROAD SPIKE PER (R10), DN 0.2' IN AC, ACCEPTED AS POINT IN THE CENTERLINE OF OLD SANTIAGO CYN RD.
- 16

FOUND LEAD TACK & TAG STAMPED "OCS TIE" PER (R6), FLUSH IN CONCRETE, ACCEPTED AS CENTERLINE TIES FOR THE INTERSECTION OF SANTIAGO BLVD. AND OLD SANTIAGO CYN. RD.
- 17

FOUND 2" IP W/ TAG STAMPED "LS 4224" PER (R11), DN 0.15' IN DIRT, ACCEPTED AS THE A POINT IN THE W'LY LINE OF LOT 7 OF (R1).
- 18

FOUND SPIKE AND WASHER STAMPED "ORANGE COUNTY SURVEYOR RCE 6978" PER (R10), DN 0.4' IN AC, ACCEPTED AS THE INTERSECTION OF OLD SANTIAGO CANYON RD. AND ANGLE POINT IN THE E'LY LINE OF LOT 6 OF (R1).
- 19

FOUND 2" IP & TAG STAMPED "RCE 13557" PER (R3), FLUSH IN DIRT, S61°04'39"E 0.08' FROM THE ESTABLISHED NW CORNER OF LOT 6 OF BLOCK A OF (R25).
- 20

FOUND LEAD TACK & TAG STAMPED "RCE 13557" PER (R3), FLUSH IN CONCRETE CURB, ACCEPTED AS POINT IN E'LY LINE OF LOT 5 OF (R1).
- 21

FOUND GEAR SPIKE & WASHER STAMPED "LS 5411", NO REFERENCE, FLUSH IN AC, N88°45'47"E 0.11' FROM THE CENTERLINE B.C. OF SANTIAGO BLVD.
- 22

FOUND HEX BAR W/ ILLEGIBLE TAG PER (R10), DN 1.7' IN WELL MONUMENT, ACCEPTED AS POINT IN THE E'LY LINE OF LOT 6 OF (R1).
- 23

FOUND 3/4" IP & 1" COPPER TAG STAMPED "LS 485" PER (R18), ACCEPTED AS POINT IN THE E'LY LINE OF LOT 14 OF (R1)
- 24

FOUND MAG SPIKE & WASHER STAMPED "LS 8862", NO REFERENCE, FLUSH IN AC, ACCEPTED AS THE INTERSECTION OF THE CENTERLINE OF PATRICIAN DR. AND THE E'LY LINE OF LOT 4 OF (R1).
- 25

FOUND LEAD TACK & TAG STAMPED "LS 4224" PER (R21), ON TOP OF WALL, N00°44'48"W 0.04' FROM THE N'LY LINE OF LOT 7 OF (R1).
- 26

FOUND 2" IP & TAG STAMPED "RCE 11188" PER (R20), DN 0.3' IN DIRT, ACCEPTED AS POINT IN THE N'LY LINE OF LOT 7 OF (R1).
- 27

FOUND 2" IP & TAG STAMPED "LS 3246" PER (R21), DN 0.3' IN DIRT, ACCEPTED AS POINT IN THE N'LY LINE OF LOT 7 OF (R1).
- 28

FOUND SQUARE HEAD SPIKE & WASHER STAMPED "RCE 13420" LIEU OF 2" IP PER (R22), FLUSH IN AC, ACCEPTED AS POINT ON THE S'LY LINE OF LOT 8 OF (R1).
- 29

FOUND 2" IP & TAG STAMPED "RCE 14107" PER (R23), DN 0.3' IN DIRT, ACCEPTED AS POINT ON THE S'LY LINE OF LOT 8 OF (R1).

ESTABLISHMENT NOTES

- 1

ESTABLISHED THE CENTERLINE OF SANTIAGO BLVD. BY HOLDING A LINE BETWEEN MONUMENT NOTES 1 AND 2.
- 5

ESTABLISHED THE CENTERLINE OF CENTER DR. BY HOLDING A LINE BETWEEN MONUMENT NOTES 1 AND 5.
- 7

ESTABLISHED THE CENTERLINE OF VILLA PARK RD. BY LEAST SQUARE ADJUSTMENT BETWEEN MONUMENT NOTES 5 AND 7 PER (R14)
- 8

ESTABLISHED THE CENTERLINE OF VILLA PARK RD. BY HOLDING A LINE BETWEEN MONUMENT NOTES 7 AND 8.
- 13

ESTABLISHED THE CENTERLINE E.C. OF VILLA PARK RD. BY INTERSECTION BETWEEN LINE ESTABLISHMENT 6 AND A LINE BETWEEN MONUMENT NOTES 13 AND 14.
- 14

ESTABLISHED THE CENTERLINE OF VILLA PARK RD. BY HOLDING RECORD RADIUS PER (R2) AND TANGENT TO ESTABLISHMENT NOTE 14.
- 18

S.F.N. ESTABLISHED THE INTERSECTION OF SANTIAGO BLVD. AND OLD SANTIAGO CYN. RD. BY TIES PER (R6). SEE DETAIL A.
- 21

ESTABLISHED THE CENTERLINE OF SANTIAGO BLVD. BY HOLDING A LINE BETWEEN MONUMENT NOTE 4 AND ESTABLISHMENT NOTE 21.
- 24

ESTABLISHED THE CENTERLINE OF SANTIAGO BLVD. BY HOLDING A LINE BETWEEN MONUMENT NOTES 3 AND 4.
- 29

ESTABLISHED THE E'LY LINE OF LOT 5 OF (R1) AND A PORTION OF THE E'LY LINE OF LOT 6 OF (R1) BY HOLDING A LINE BETWEEN MONUMENT NOTES 18 AND 29.
- 30

ESTABLISHED ANGLE POINT IN THE CENTERLINE OF SANTIAGO BLVD. BY BEARING-BEARING-INTERSECTION BETWEEN LINE ESTABLISHMENTS 14 AND 30.
- 31

ESTABLISHED THE CENTERLINE OF SANTIAGO BLVD. BY HOLDING A LINE BETWEEN ESTABLISHMENT NOTES 14 AND MONUMENT NOTE 21.
- 32

ESTABLISHED THE CENTERLINE OF SANTIAGO BLVD. BY HOLDING RECORD RADIUS PER (R3) AND TANGENT TO LINE ESTABLISHMENTS 14 AND 31.
- 33

ESTABLISHED THE RIGHT OF WAY OF VILLA PARK RD. BY HOLDING A LINE PARALLEL WITH, AND A RECORD DISTANCE OF 50' PER (R2) FROM LINE ESTABLISHMENT 31.
- 34

ESTABLISHED THE RIGHT OF WAY OF VILLA PARK RD. BY HOLDING A LINE PARALLEL WITH, AND A RECORD DISTANCE OF 50' PER (R2) FROM LINE ESTABLISHMENT 31.
- 39

ESTABLISHED THE SE CORNER OF LOT 5 OF (R1) BY PROPORTION PER (R17) BETWEEN MONUMENT NOTE 9 AND ESTABLISHMENT NOTE 39.
- 40

ESTABLISHED A PORTION OF THE E'LY LINE OF LOT 6 OF (R1) AND A PORTION OF THE E'LY LINE OF LOT 14 OF (R1) BY HOLDING A LINE BETWEEN MONUMENT NOTES 18 AND 23.
- 41

S.F.N. ESTABLISHED THE SE CORNER OF LOT 6 OF (R1) BY HOLDING A RECORD DISTANCE OF 692.11' PER (R18) S'LY FROM MONUMENT NOTE 18 ALONG ESTABLISHMENT NOTE 41.
- 47

ESTABLISHED THE W'LY LINE OF LOT 7 OF (R1) BY HOLDING A LINE BETWEEN MONUMENT NOTES 7 AND 17.
- 48

ESTABLISHED THE E'LY LINE OF LOT 4 OF (R1) BY HOLDING A LINE BETWEEN MONUMENT NOTES 2 AND 24.
- 49

ESTABLISHED THE NW CORNER OF LOT 7 OF (R1) BY HOLDING THE A RECORD DISTANCE 39.42' PER (R20) N'LY FROM MONUMENT NOTE 7 ALONG THE N'LY PROLONGATION OF LINE ESTABLISHMENT 39.
- 50

ESTABLISHED THE N'LY LINE OF LOT 7 OF (R1) BY HOLDING A LINE BETWEEN ESTABLISHMENT NOTE 14 AND MONUMENT NOTE 27.
- 51

ESTABLISHED THE COMMON CORNERS OF LOTS 4, 5, 6 AND 7 OF (R1) BY INTERSECTION OF LINE ESTABLISHMENTS 14 AND 51.
- 52

ESTABLISHED THE N'LY LINE OF LOT 6 OF (R1) BY HOLDING A LINE BETWEEN ESTABLISHMENT NOTES 6 AND 52.
- 53

ESTABLISHED THE S'LY LINE OF LOT 8 OF (R1) BY HOLDING A LINE BETWEEN MONUMENT NOTES 28 AND 29.
- 54

ESTABLISHED THE SE CORNER OF LOT 8 OF (R1) BY INTERSECTION OF ESTABLISHMENT NOTES 53 AND 54.
- 56

ESTABLISHED THE COMMON CORNERS OF LOTS 6, 7, 13 AND 14 OF (R1) BY PROPORTION PER (R2) BETWEEN ESTABLISHMENT NOTES 6 AND 2.
- 57

ESTABLISHED THE S'LY LINE OF LOT 7 OF (R1) BY HOLDING A LINE BETWEEN ESTABLISHMENT NOTES 2 AND 57.
- 58

ESTABLISHED THE S'LY LINE OF LOT 6 OF (R1) BY HOLDING A LINE BETWEEN ESTABLISHMENT NOTES 6 AND 58.
- 59

ESTABLISHED THE E'LY LINE OF LOT 7 OF (R1) BY HOLDING A LINE BETWEEN ESTABLISHMENT NOTES 14 AND 59.
- 60

S.F.N. ESTABLISHED THE SE CORNER LOT 7 OF (R26) HOLDING A RECORD DISTANCE OF 470' PER (R17) S'LY FROM ESTABLISHMENT NOTE 60 ALONG LINE ESTABLISHMENT 60.
- 61

ESTABLISHED THE NW CORNER OF LOT 6 OF BLOCK A OF (R25) BY HOLDING A RECORD DISTANCE OF 495' PER (R21) S'LY FROM ESTABLISHMENT NOTE 60 ALONG LINE ESTABLISHMENT 61.

EASEMENT NOTES

- 1

EASEMENT GRANTED TO THE COUNTY OF ORANGE FOR SLOPE AND DRAINAGE PURPOSES WITHIN PARCEL 178, BOOK 130005, PAGE 1012, O.R.
- 2

EASEMENT GRANTED TO THE COUNTY OF ORANGE FOR SLOPE AND DRAINAGE PURPOSES WITHIN PARCEL 177, BOOK 130005, PAGE 1016, O.R.
- 3

EASEMENT GRANTED TO ORANGE COUNTY WATER DISTRICT SLOPE PURPOSES WITHIN PARCEL 189, 94-0031283, O.R.
- 4

EASEMENT GRANTED TO ORANGE COUNTY WATER DISTRICT SLOPE PURPOSES WITHIN PARCEL 190, 94-0031283, O.R.
- 5

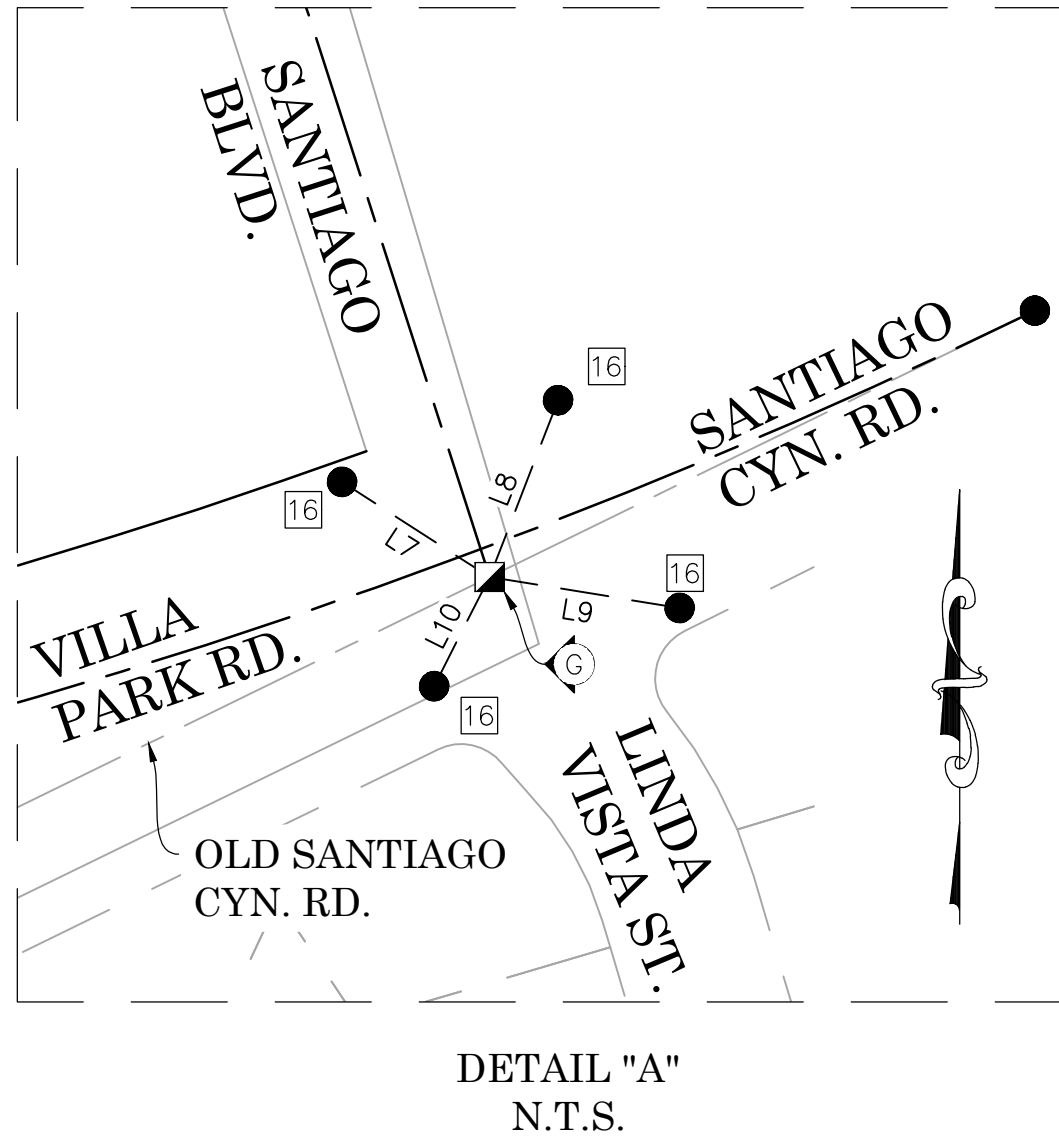
EASEMENT GRANTED TO ORANGE COUNTY WATER DISTRICT FOR SLOPE AND DRAINAGE PURPOSES WITHIN PARCEL 178, 85-299089, O.R.
- 6

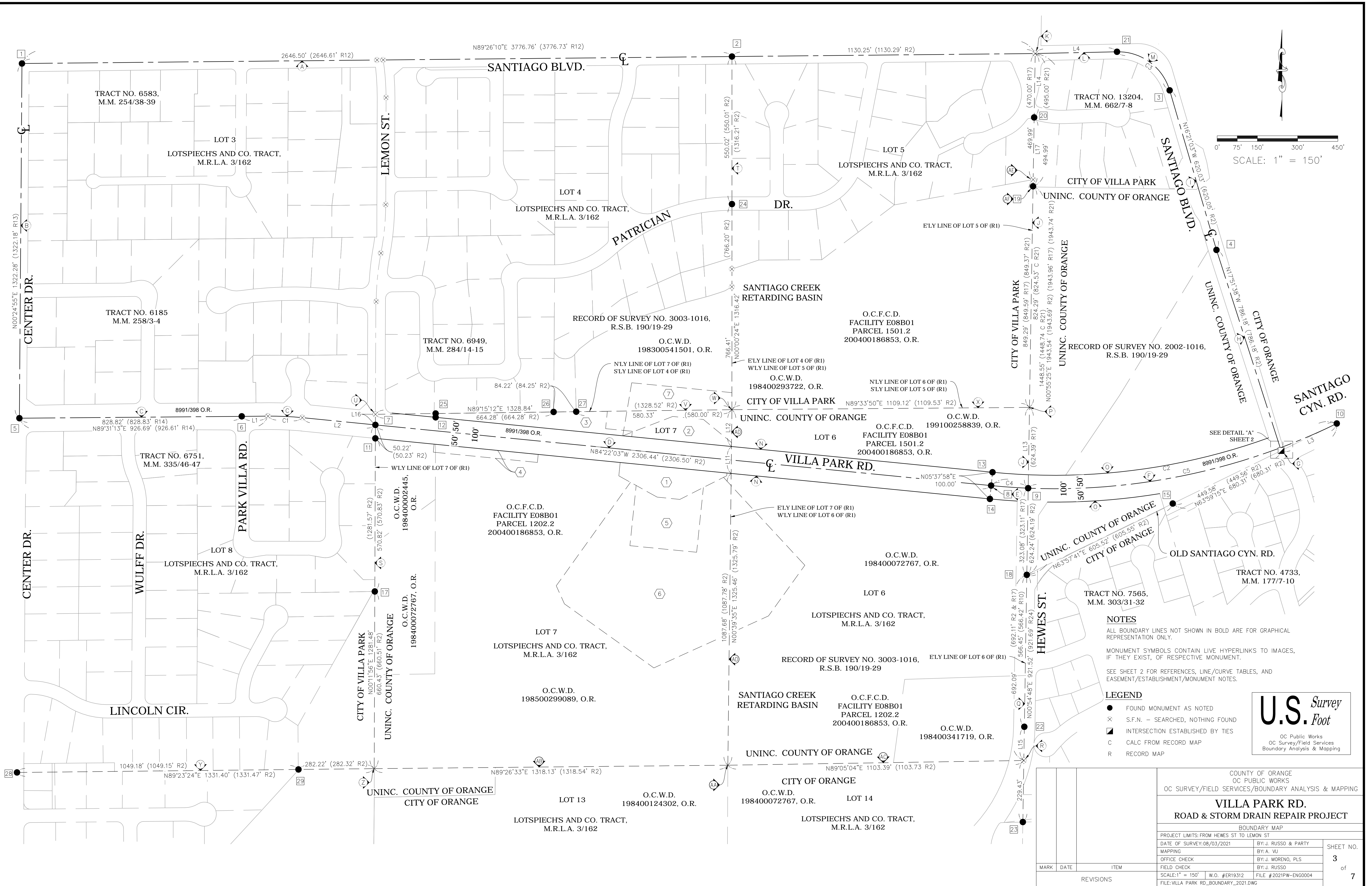
EASEMENT GRANTED TO ORANGE COUNTY FLOOD CONTROL DISTRICT FOR BUTTRESS, DRAINAGE, AND ACCESS PURPOSES WITHIN PARCEL 1302, 96-0232583, O.R.
- 7

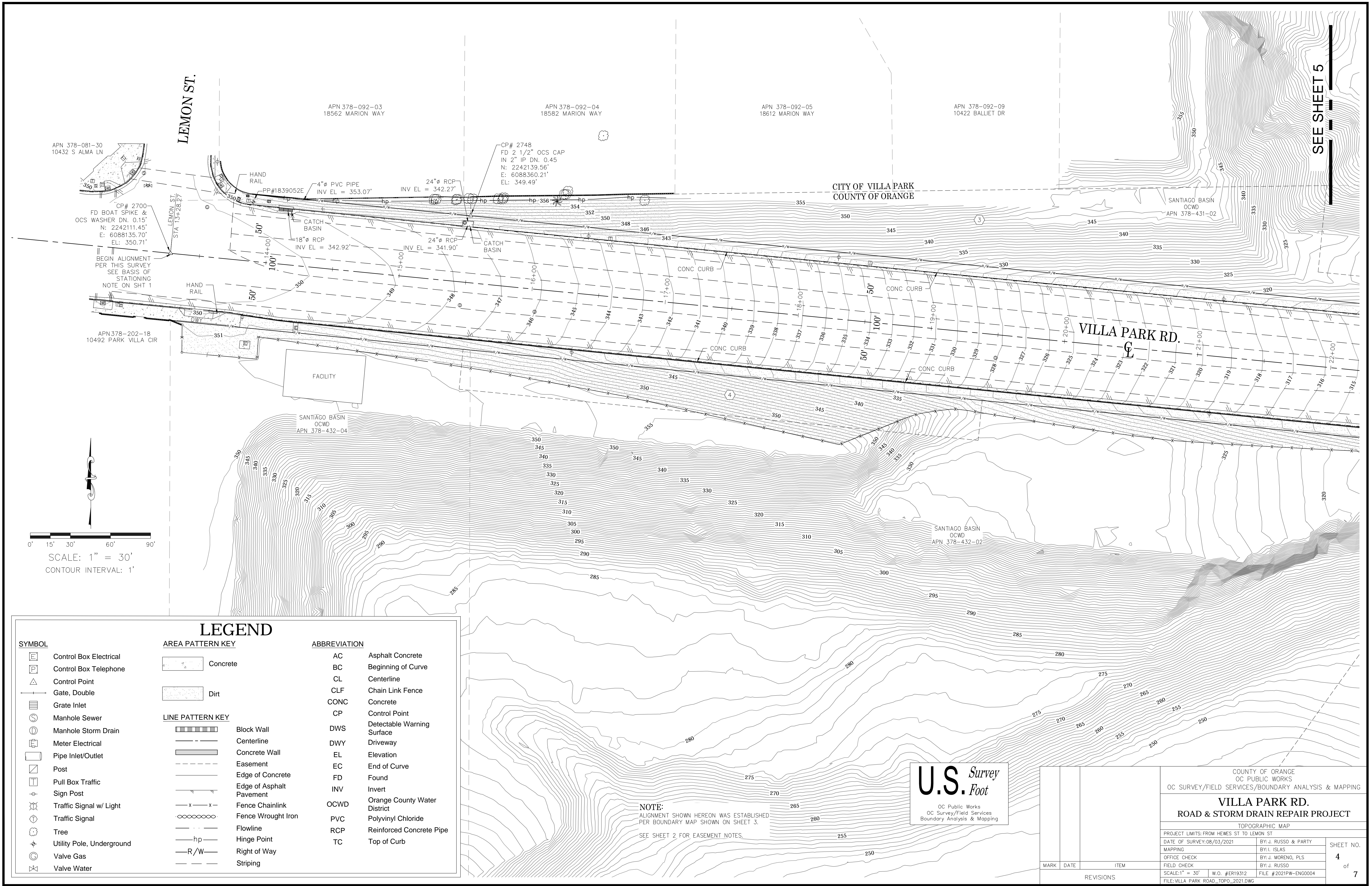
EASEMENT GRANTED TO ORANGE COUNTY FLOOD CONTROL DISTRICT FOR BUTTRESS, DRAINAGE, AND ACCESS PURPOSES WITHIN PARCEL 1302.1, 96-0232583, O.R.

CURVE TABLE						
CURVE #	DELTA	RADIUS	LENGTH	RECORD DELTA	RECORD RADIUS	RECORD LENGTH
C1	6°06'44"	1199.97'	128.01'	(6°07'00" R14)	(1200.00' R14)	(128.11' R14)
C2	31°38'37"	2399.95'	1325.46'	(31°38'36" R2)	(2400.00' R2)	(1325.47' R2)
C3	74°53'10"	200.00'	261.40'	(74°53'00" R3)	(200.00' R3)	(261.39' R3)
C4	31°7'50"	2399.95'	138.11'	(31°7'48" R2)	(2400.00' R2)	(137.10' R2)
C5	28°20'47"	2399.95'	1187.35'	(28°20'47" R2)	(2400.00' R2)	(1187.37' R2)

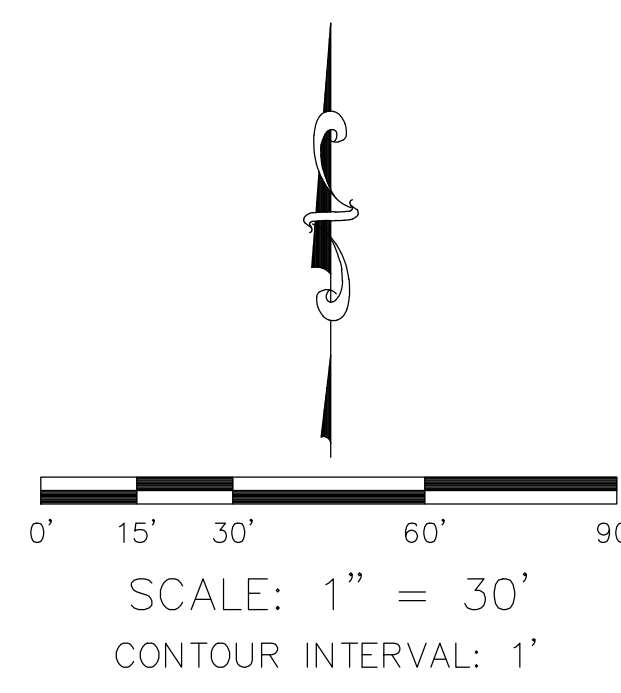
LINE TABLE			
LINE #	BEARING	MEASURED DISTANCE	RECORD DISTANCE
L1	N89°31'13"E	97.86'	(97.78' R14)
L2	N84°22'03"W	273.79'	(273.80' R14)
L3	N63°59'15"E	230.72'	(230.75' R2)
L4	N88°45'47"E	304.94'	(304.96' R2)
L7	N57°12'46"W	66.77'	(66.78' R6)
L8	N21°10'01"E	72.04'	(72.04' R6)
L9	N80°44'06"W	73.20'	(73.21' R6)
L10	N26°56'58"E	46.58'	(46.58' R6)
L11	N00°39'35"E	100.38'	(100.38' R2)
L12	N00°39'35"E	137.40'	(137.63' R2)
L13	N00°55'25"E	301.18'	(301.26' C R17)
L14	N00°55'25"E	238.21'	(238.37' R3)
L15	N00°54'48"E	125.64'	-
L16	N00°11'59"E	39.42'	(39.42' R20)
L17	N00°55'25"E	256.78'	(256.63' R3)







SEE SHEET 5



LEGEND

SYMBOL		AREA PATTERN KEY		ABBREVIATION	
	Control Box Electrical		Concrete	AC	Asphalt Concrete
	Control Box Telephone		Dirt	BC	Beginning of Curve
	Control Point			CL	Centerline
	Gate, Double			CLF	Chain Link Fence
	Grate Inlet			CONC	Concrete
	Manhole Sewer			CP	Control Point
	Manhole Storm Drain			DWS	Detectable Warning Surface
	Meter Electrical			DWY	Driveway
	Pipe Inlet/Outlet			EL	Elevation
	Post			EC	End of Curve
	Pull Box Traffic			FD	Found
	Sign Post			INV	Invert
	Traffic Signal w/ Light			OCWD	Orange County Water District
	Traffic Signal			PVC	Polyvinyl Chloride
	Tree			RCP	Reinforced Concrete Pipe
	Utility Pole, Underground			TC	Top of Curb
	Valve Gas				
	Valve Water				

LINE PATTERN KEY	
	Block Wall
	Centerline
	Concrete Wall
	Easement
	Edge of Concrete
	Edge of Asphalt Pavement
	Fence Chainlink
	Fence Wrought Iron
	Flowline
	Hinge Point
	Right of Way
	Striping

NOTE:
ALIGNMENT SHOWN HEREON WAS ESTABLISHED
PER BOUNDARY MAP SHOWN ON SHEET 3.
SEE SHEET 2 FOR EASEMENT NOTES.

U.S. Survey
Foot
OC Public Works
OC Survey/Field Services
Boundary Analysis & Mapping

			COUNTY OF ORANGE OC PUBLIC WORKS OC SURVEY/FIELD SERVICES/BOUNDARY ANALYSIS & MAPPING					
			VILLA PARK RD. ROAD & STORM DRAIN REPAIR PROJECT					
			TOPOGRAPHIC MAP					
			PROJECT LIMITS: FROM HEWES ST TO LEMON ST					
			DATE OF SURVEY: 08/03/2021		BY: J. RUSSO & PARTY		SHEET NO. 4 of 7	
			MAPPING		BY: I. ISLAS			
			OFFICE CHECK		BY: J. MORENO, PLS			
			FIELD CHECK		BY: J. RUSSO			
			MARK	DATE	ITEM		SCALE: 1" = 30' W.O. #ER19312 FILE # 2021PW-ENG0004	
			REVISIONS				FILE: VILLA PARK ROAD_TOPO_2021.DWG	

SYMBOL

Control Box Electrical

Control Box Telephone

Control Point

Gate, Double

Grate Inlet

Manhole Sewer

Manhole Storm Drain

Meter Electrical

Pipe Inlet/Outlet

Post

Pull Box Traffic

Sign Post

Traffic Signal w/ Light

Traffic Signal

Tree

Utility Pole, Underground

Valve Gas

Valve Water

AREA PATTERN KEY

Concrete

Dirt

LINE PATTERN KEY

Block Wall

Centerline

Concrete Wall

Easement

Edge of Concrete

Edge of Asphalt Pavement

Fence Chainlink

Fence Wrought Iron

Flowline

Hinge Point

Right of Way

Striping

ABBREVIATION

AC

Asphalt Concrete

BC

Beginning of Curve

CL

Centerline

CLF

Chain Link Fence

CONC

Concrete

CP

Control Point

DWS

Detectable Warning Surface

DWY

Driveway

EL

Elevation

EC

End of Curve

FD

Found

INV

Invert

OCWD

Orange County Water District

PVC

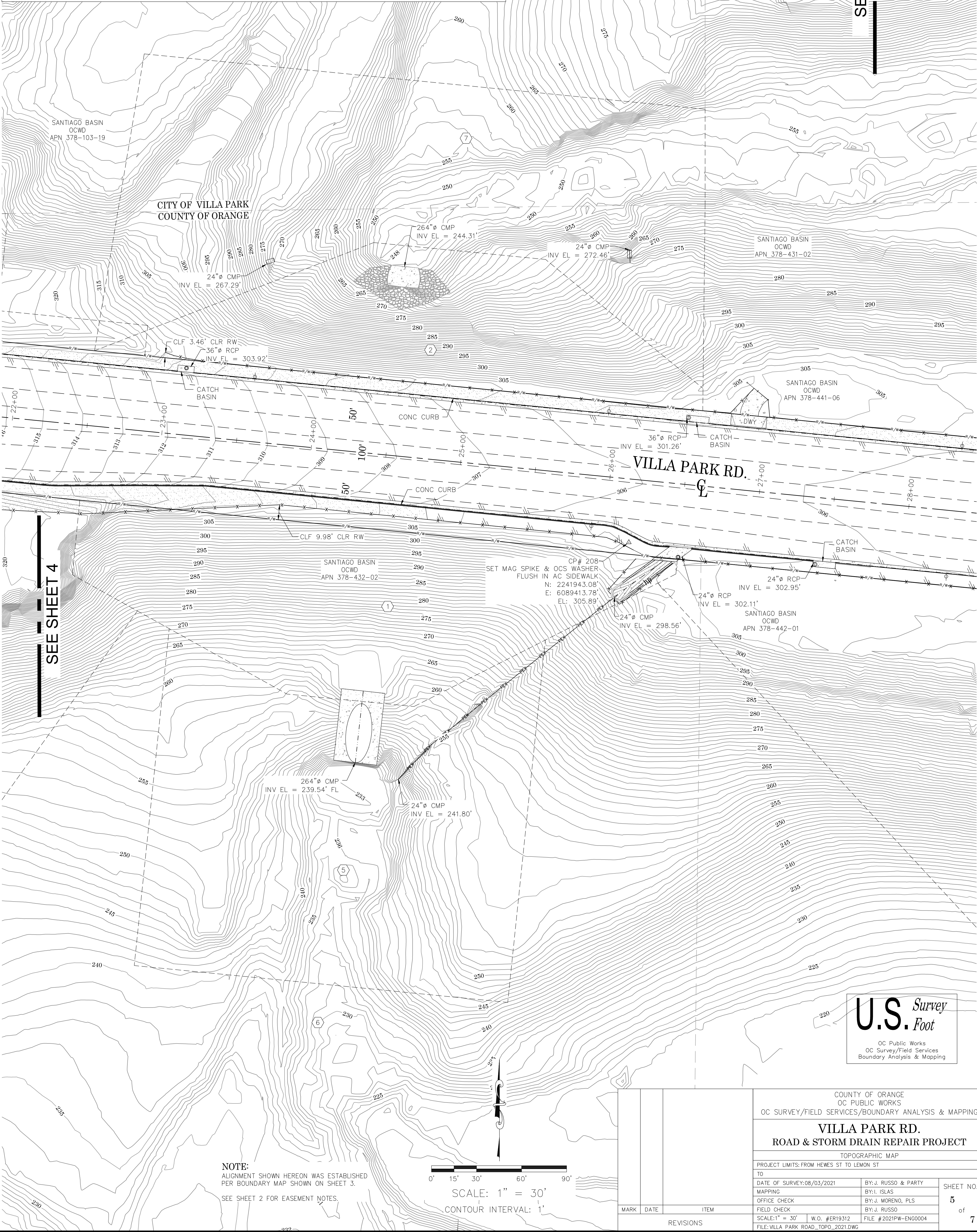
Polyvinyl Chloride

RCP

Reinforced Concrete Pipe

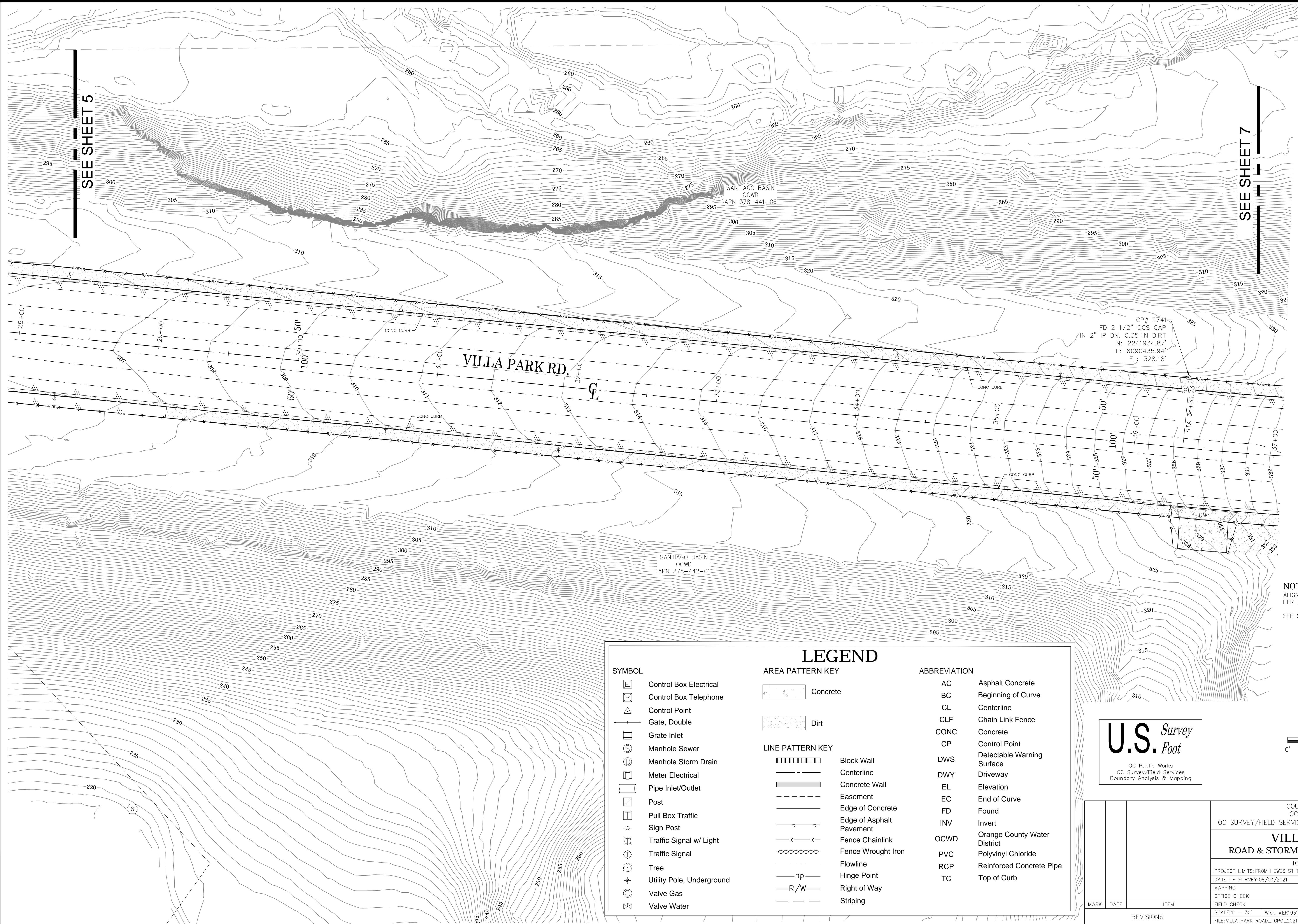
TC

Top of Curb



U.S. Survey Foot
OC Public Works
OC Survey/Field Services
Boundary Analysis & Mapping

			COUNTY OF ORANGE OC PUBLIC WORKS OC SURVEY/FIELD SERVICES/BOUNDARY ANALYSIS & MAPPING				
			VILLA PARK RD. ROAD & STORM DRAIN REPAIR PROJECT				
			TOPOGRAPHIC MAP				
			PROJECT LIMITS: FROM HEWES ST TO LEMON ST				
			TO				
			DATE OF SURVEY: 08/03/2021		BY: J. RUSSO & PARTY		SHEET NO. 5 of 7
			MAPPING		BY: I. ISLAS		
			OFFICE CHECK		BY: J. MORENO, PLS		
			FIELD CHECK		BY: J. RUSSO		
			MARK	DATE	ITEM	SCALE: 1" = 30' W.O. #ER19312 FILE # 2021PW-ENG0004	
REVISIONS			FILE: VILLA PARK ROAD_TOPO_2021.DWG				



SEE SHEET 5

SEE SHEET 7

VILLA PARK RD.

SANTIAGO BASIN
OCWD
APN 378-442-01

SANTIAGO BASIN
OCWD
APN 378-441-06

CP# 2741
FD 2 1/2" OCS CAP
IN 2" IP DN. 0.35 IN DIRT
N: 2241934.87'
E: 6090435.94'
EL: 328.18'

NOTE:
ALIGNMENT SHOWN HEREON WAS ESTABLISHED
PER BOUNDARY MAP SHOWN ON SHEET 3.
SEE SHEET 2 FOR EASEMENT NOTES.

SYMBOL

[Symbol]	Control Box Electrical
[Symbol]	Control Box Telephone
[Symbol]	Control Point
[Symbol]	Gate, Double
[Symbol]	Grate Inlet
[Symbol]	Manhole Sewer
[Symbol]	Manhole Storm Drain
[Symbol]	Meter Electrical
[Symbol]	Pipe Inlet/Outlet
[Symbol]	Post
[Symbol]	Pull Box Traffic
[Symbol]	Sign Post
[Symbol]	Traffic Signal w/ Light
[Symbol]	Traffic Signal
[Symbol]	Tree
[Symbol]	Utility Pole, Underground
[Symbol]	Valve Gas
[Symbol]	Valve Water

AREA PATTERN KEY

[Pattern]	Concrete
[Pattern]	Dirt

LINE PATTERN KEY

[Pattern]	Block Wall
[Pattern]	Centerline
[Pattern]	Concrete Wall
[Pattern]	Easement
[Pattern]	Edge of Concrete
[Pattern]	Edge of Asphalt Pavement
[Pattern]	Fence Chainlink
[Pattern]	Fence Wrought Iron
[Pattern]	Flowline
[Pattern]	Hinge Point
[Pattern]	Right of Way
[Pattern]	Striping

LEGEND

ABBREVIATION

AC	Asphalt Concrete
BC	Beginning of Curve
CL	Centerline
CLF	Chain Link Fence
CONC	Concrete
CP	Control Point
DWS	Detectable Warning Surface
DWY	Driveway
EL	Elevation
EC	End of Curve
FD	Found
INV	Invert
OCWD	Orange County Water District
PVC	Polyvinyl Chloride
RCP	Reinforced Concrete Pipe
TC	Top of Curb

U.S. Survey

OC Public Works
OC Survey/Field Services
Boundary Analysis & Mapping

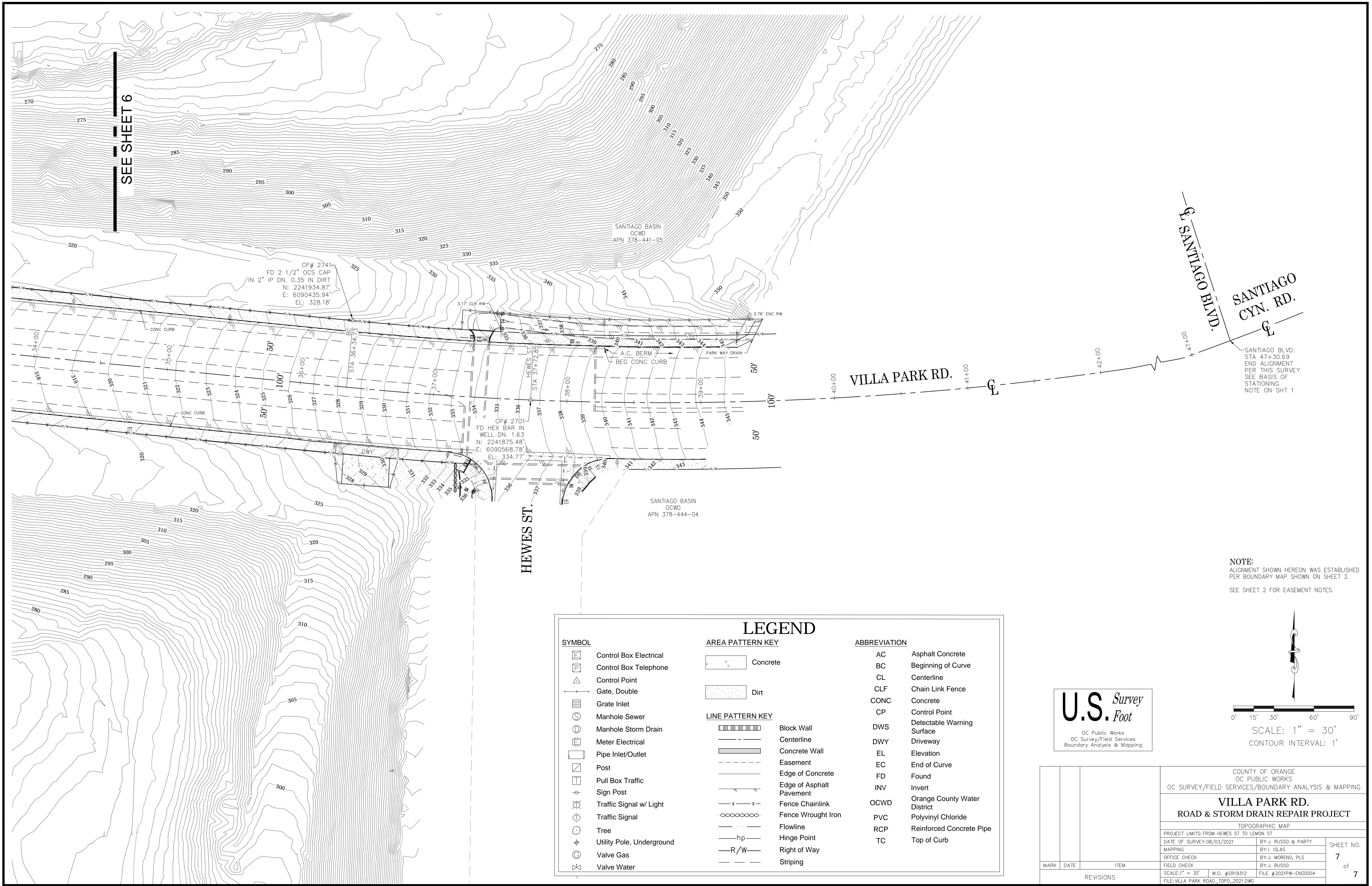
0' 15' 30' 60' 90'

SCALE: 1" = 30'

CONTOUR INTERVAL: 1'

COUNTY OF ORANGE OC PUBLIC WORKS OC SURVEY/FIELD SERVICES/BOUNDARY ANALYSIS & MAPPING			SHEET NO.	
VILLA PARK RD. ROAD & STORM DRAIN REPAIR PROJECT			6	
TOPOGRAPHIC MAP			of	
PROJECT LIMITS: FROM HEWES ST TO LEMON ST			7	
DATE OF SURVEY: 08/03/2021		BY: J. RUSSO & PARTY		
MAPPING		BY: I. ISLAS		
OFFICE CHECK		BY: J. MORENO, PLS		
FIELD CHECK		BY: J. RUSSO		
SCALE: 1" = 30'		W.O. #ER19312		
FILE: VILLA PARK ROAD_TOPO_2021.DWG		FILE #2021PW-ENG0004		

MARK	DATE	ITEM
REVISIONS		



SEE SHEET 6

SANTIAGO CYN. RD.

SANTIAGO BLVD.
STA 47+30.69
END ALIGNMENT
PER THIS SURVEY
SEE BASIS OF
STATIONING
NOTE ON SHT 1

VILLA PARK RD.

HEWES ST.

LEGEND

SYMBOL

- Control Box Electrical
- Control Box Telephone
- Control Point
- Gate, Double
- Grate Inlet
- Manhole Sewer
- Manhole Storm Drain
- Meter Electrical
- Pipe Inlet/Outlet
- Post
- Pull Box Traffic
- Sign Post
- Traffic Signal w/ Light
- Traffic Signal
- Tree
- Utility Pole, Underground
- Valve Gas
- Valve Water

AREA PATTERN KEY

- Concrete
- Dirt

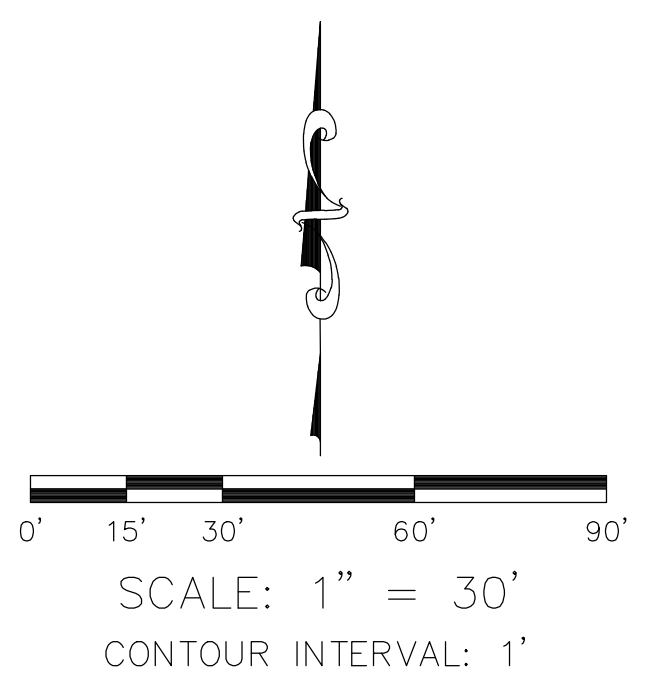
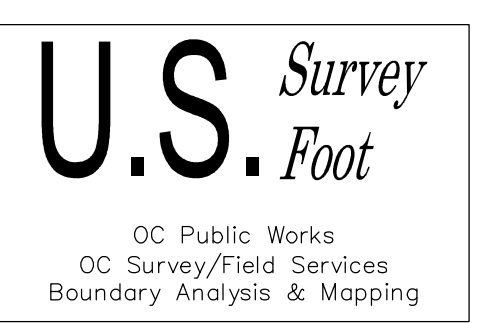
LINE PATTERN KEY

- Block Wall
- Centerline
- Concrete Wall
- Easement
- Edge of Concrete
- Edge of Asphalt Pavement
- Fence Chainlink
- Fence Wrought Iron
- Flowline
- Hinge Point
- Right of Way
- Striping

ABBREVIATION

- AC Asphalt Concrete
- BC Beginning of Curve
- CL Centerline
- CLF Chain Link Fence
- CONC Concrete
- CP Control Point
- DWS Detectable Warning Surface
- DWY Driveway
- EL Elevation
- EC End of Curve
- FD Found
- INV Invert
- OCWD Orange County Water District
- PVC Polyvinyl Chloride
- RCP Reinforced Concrete Pipe
- TC Top of Curb

NOTE:
ALIGNMENT SHOWN HEREON WAS ESTABLISHED
PER BOUNDARY MAP SHOWN ON SHEET 3.
SEE SHEET 2 FOR EASEMENT NOTES.



COUNTY OF ORANGE OC PUBLIC WORKS OC SURVEY/FIELD SERVICES/BOUNDARY ANALYSIS & MAPPING			
VILLA PARK RD. ROAD & STORM DRAIN REPAIR PROJECT			
TOPOGRAPHIC MAP			
PROJECT LIMITS: FROM HEWES ST TO LEMON ST			
DATE OF SURVEY: 08/03/2021		BY: J. RUSSO & PARTY	
MAPPING		BY: J. ISLAS	
OFFICE CHECK		BY: J. MORENO, PLS	
FIELD CHECK		BY: J. RUSSO	
SCALE: 1" = 30'		W.O. #ER19312	FILE #2021PW-ENG0004
FILE: VILLA PARK ROAD_TOPD_2021.DWG			
MARK	DATE	ITEM	SHEET NO.
REVISIONS			7 of 7