



OC PUBLIC WORKS DEPARTMENT
JAMES TREADAWAY, DIRECTOR OF PUBLIC WORKS
KEVIN HILLS, COUNTY SURVEYOR
VALIDO TRAIL



TRAIL REPAIR PROJECT

LOCATION MAP



SENIOR LAND SURVEYOR'S CERTIFICATE:

THIS MAP CORRECTLY REPRESENTS A SURVEY MADE BY ME OR UNDER MY DIRECTION IN CONFORMANCE WITH REQUIREMENTS OF THE PROFESSIONAL LAND SURVEYORS' ACT; THIS 23 DAY OF MARCH, 2023.

MICHAEL KUBISTY, PLS. SENIOR LAND SURVEYOR



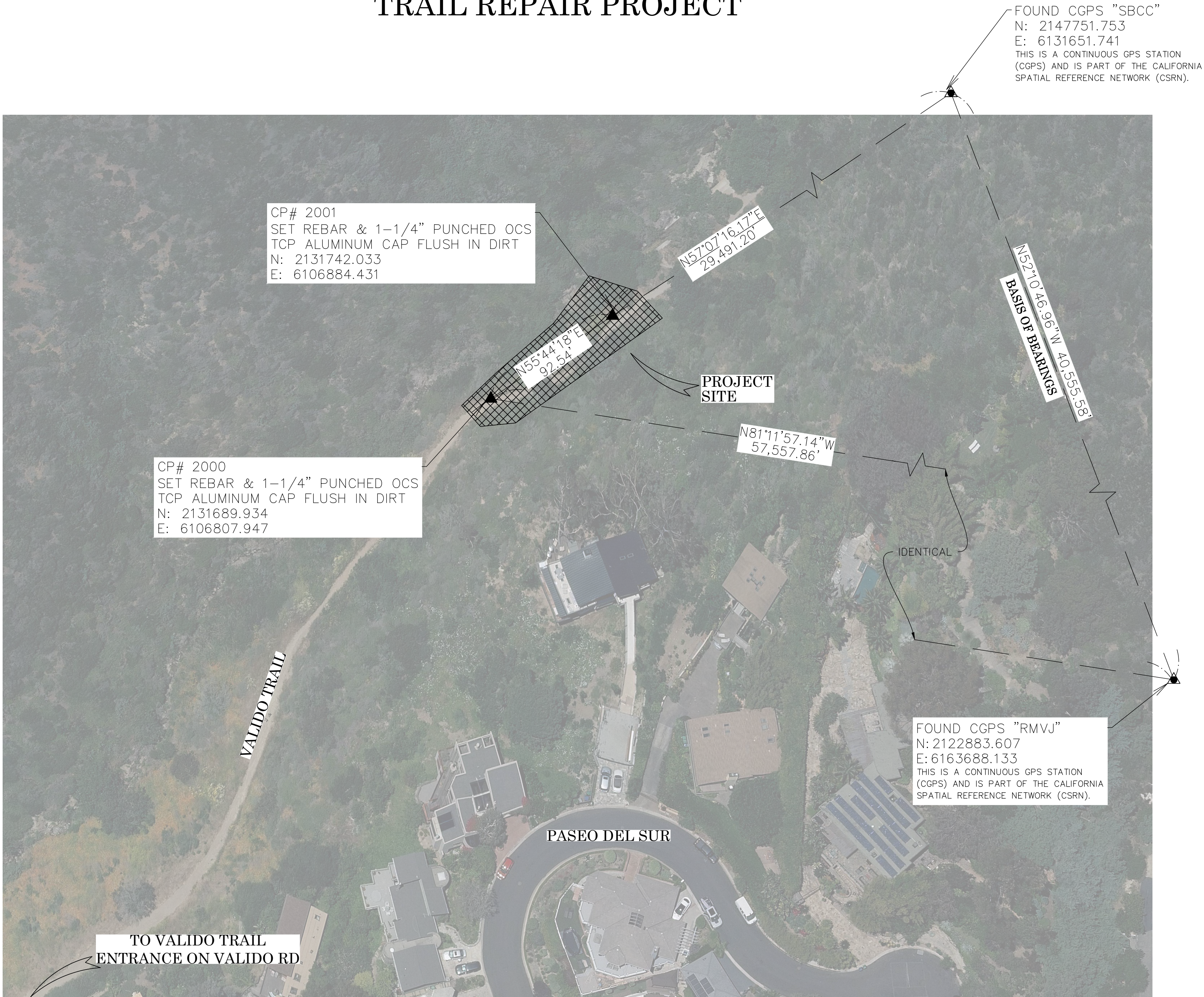
DEPUTY COUNTY SURVEYOR'S STATEMENT:

THIS MAP HAS BEEN EXAMINED IN ACCORDANCE WITH THE PROFESSIONAL LAND SURVEYORS' ACT; THIS 23 DAY OF MARCH, 2023.

MICHAEL LAFONTAINE, PLS. DEPUTY COUNTY SURVEYOR



TOPOGRAPHIC MAPPING PROJECT



BASIS OF BEARINGS

THE BASIS OF BEARINGS FOR THIS SURVEY IS BASED ON THE CALIFORNIA COORDINATE SYSTEM (CCS83), ZONE VI, NAD 83, OCS (2017.50) EPOCH ADJUSTMENT, AS DETERMINED LOCALLY BY A LINE BETWEEN CONTINUOUS GLOBAL POSITIONING STATIONS CGPS STATIONS (SBCC) AND (RMVJ) BEING NORTH 52°10'46.96\"/>

HORIZONTAL DATUM

COORDINATES SHOWN ARE BASED ON THE CALIFORNIA COORDINATE SYSTEM (CCS83), ZONE VI, NAD 83, OCS (2017.50) EPOCH ADJUSTMENT.
ALL DISTANCES SHOWN ARE GRID, UNLESS OTHERWISE NOTED. TO OBTAIN GROUND DISTANCES MULTIPLY GRID BY A COMBINED FACTOR OF 1.00004795.
THIS COMBINATION FACTOR WAS HELD AT: CP# 2000
N: 2131689.934 E: 6163688.133 EL: 254.349
ALL DISTANCES ARE BASED ON THE U.S. SURVEY FOOT.

VERTICAL DATUM

NAVD 88 BENCHMARK: AN ORTHOMETRIC HEIGHT OF 254.34' WAS COMPUTED AT CONTROL POINT #2000 SHOWN HEREIN. ELEVATIONS WERE DERIVED FROM STATIC GNSS MEASUREMENTS BY COMBINING GEOD18 WITH CCS83, ZONE VI, 2017.50 EPOCH ELLIPSOID HEIGHTS, HOLDING THE ELLIPSOID HEIGHT ON CGPS STATION RMVJ OF 449.819 AS SHOWN ON THE HORIZONTAL CONTROL DATA SHEET NAMED "RMVJ", ON FILE IN THE OFFICE OF THE ORANGE COUNTY SURVEYOR.

NOTES

THE SURVEY INFORMATION SHOWN HEREON IS TO BE USED FOR TOPOGRAPHIC RELATIONSHIPS ONLY AND IS NOT INTENDED FOR LAND ACQUISITION OR BOUNDARY PURPOSES.

SHEET INDEX

SHEET	NO.	DESCRIPTION
SHEET 1	1	TITLE SHEET
SHEET 2	2	TOPOGRAPHIC MAP

PURPOSE OF SURVEY

THE PURPOSE OF THE SURVEY IS TO PROVIDE A TOPOGRAPHIC MAP FOR THIS PORTION OF THE VALIDO TRAIL.

				COUNTY OF ORANGE OC PUBLIC WORKS OC SURVEY/FIELD SERVICES/BOUNDARY ANALYSIS & MAPPING	
		VALIDO TRAIL TRAIL REPAIR PROJECT			
		TITLE SHEET			
		PROJECT LIMITS: THIS PORTION OF THE VALIDO TRAIL			
		DATE OF SURVEY: MARCH 2023		BY: J. RUSSO & PARTY	
		MAPPING		BY: J. PEDRETTI	
		OFFICE CHECK		BY: M. KUBISTY, PLS	
		FIELD CHECK		BY: J. RUSSO & PARTY	
		SCALE: N.T.S.		W.O. #EC29949	
		FILE: VALIDO_TRAIL_TOPO_2023.DWG		FILE # 2223PW-OC003	
MARK		DATE		ITEM	
				REVISIONS	
				SHEET NO. 1 of 2	



LEGEND

AREA PATTERN KEY

Dirt

SYMBOL

Rock/Boulder

Sign Post

LINE PATTERN KEY

Pipe and Cable Fence

Gradeline

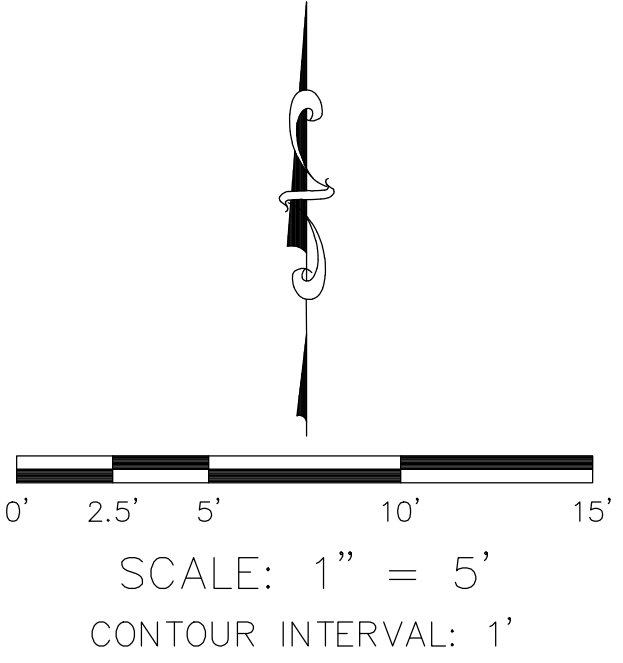
Hinge Point

Toe Line

ABBREVIATION

CP Control Point

EL Elevation



U.S. Survey
Foot

OC Public Works
OC Survey/Field Services
Boundary Analysis & Mapping

			COUNTY OF ORANGE OC PUBLIC WORKS OC SURVEY/FIELD SERVICES/BOUNDARY ANALYSIS & MAPPING						
			VALIDO TRAIL TRAIL REPAIR PROJECT						
			TITLE SHEET						
			PROJECT LIMITS: THIS PORTION OF THE VALIDO TRAIL						
			DATE OF SURVEY:MARCH 2023		BY:J. RUSSO & PARTY		SHEET NO. 2 of 2		
			MAPPING		BY:J. PEDRETTI				
			OFFICE CHECK		BY:M. KUBISTY, PLS				
			FIELD CHECK		BY:J. RUSSO & PARTY				
			MARK	DATE	ITEM	SCALE: N.T.S.		W.O. #EC29949	FILE # 2223PW-OCPO03
			REVISIONS			FILE: VALIDO TRAIL_TOPO_2023.DWG			