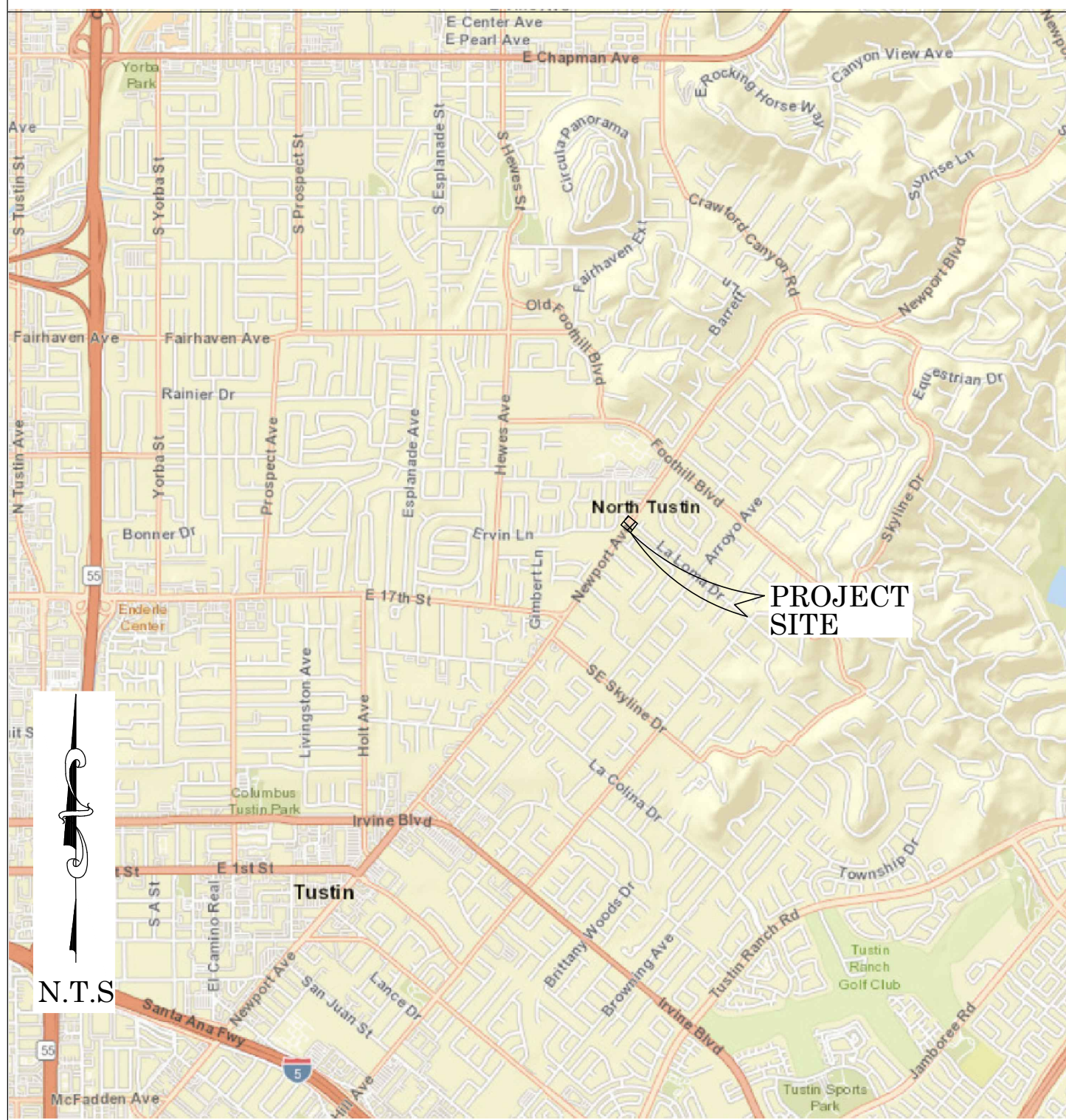




OC PUBLIC WORKS DEPARTMENT  
JAMES TREADAWAY, DIRECTOR OF PUBLIC WORKS  
KEVIN HILLS, COUNTY SURVEYOR  
NEWPORT AVE & LA LOMA DR



LOCATION MAP



TRAFFIC SIGNAL



BASIS OF BEARINGS

THE BASIS OF BEARINGS FOR THIS SURVEY IS BASED ON THE CALIFORNIA COORDINATE SYSTEM (CCS83), ZONE VI, NAD 83, OCS (2007.00) EPOCH ADJUSTMENT, AS DETERMINED LOCALLY BY A LINE BETWEEN CONTINUOUS GLOBAL POSITIONING STATIONS CGPS STATIONS (OEOC) AND (CCCS) BEING NORTH 45°17'30" WEST AS DERIVED FROM THE COORDINATES PUBLISHED BY THE CALIFORNIA SPATIAL REFERENCE CENTER (CSRC) ALONG WITH DATA SHEETS ON FILE IN THE OFFICE OF THE ORANGE COUNTY SURVEYOR.

HORIZONTAL DATUM

COORDINATES SHOWN ARE BASED ON THE CALIFORNIA COORDINATE SYSTEM (CCS83), ZONE VI, NAD 83, OCS (2007.00) EPOCH ADJUSTMENT.  
ALL DISTANCES SHOWN ARE GRID, UNLESS OTHERWISE NOTED. TO OBTAIN GROUND DISTANCES MULTIPLY GRID BY A COMBINED FACTOR OF 1.00002398.  
COMBINATION FACTOR WAS HELD AT: #1400  
N: 2225028.47" E: 6091280.58" ELEVATION= 237.34'

VERTICAL DATUM

O.C.S. BM. 3A-86-71 ELEV. = 241.352' YEAR LEVELED: 2010  
NAVD 1988 (O.C.S. 1995 ADJUSTMENT)  
FOUND 3 3/4" O.C.S. ALUMINUM BENCHMARK DISK STAMPED "3A-86-71", SET IN THE SOUTHWESTERLY CORNER OF A 4 FT. BY 11 FT. CONCRETE CATCH BASIN. MONUMENT IS LOCATED IN THE NORTHEASTERLY CORNER OF THE INTERSECTION OF LA LOMA DRIVE AND NEWPORT AVENUE, 42.5 FT. SOUTHEASTERLY OF THE CENTERLINE OF NEWPORT AVENUE AND 125.5 FT. NORTHEASTERLY OF THE CENTERLINE OF LA LOMA DRIVE. MONUMENT IS SET LEVEL WITH THE SIDEWALK.

NOTES

THE SURVEY INFORMATION SHOWN HEREON IS TO BE USED FOR TOPOGRAPHIC RELATIONSHIPS ONLY AND IS NOT INTENDED FOR LAND ACQUISITION OR BOUNDARY PURPOSES.

SHEET INDEX

SHEET	NO.	DESCRIPTION
1	1	TITLE SHEET
2	2	BOUNDARY MAP
3	3	AS-BUILT

PURPOSE OF SURVEY

THE PURPOSE OF THE SURVEY IS TO PROVIDE AN AS-BUILT MAP AND RIGHT OF WAY ESTABLISHMENT FOR THE INTERSECTION OF NEWPORT AVE AND LA LOMA DR.

SENIOR LAND SURVEYOR'S CERTIFICATE:

THIS MAP CORRECTLY REPRESENTS A SURVEY MADE BY ME OR UNDER MY DIRECTION IN CONFORMANCE WITH REQUIREMENTS OF THE PROFESSIONAL LAND SURVEYOR'S ACT; THIS 12 DAY OF AUGUST, 2021.

JESOM MORENO, PLS. SENIOR LAND SURVEYOR



DEPUTY COUNTY SURVEYOR'S STATEMENT:

THIS MAP HAS BEEN EXAMINED IN ACCORDANCE WITH THE PROFESSIONAL LAND SURVEYOR'S ACT; THIS 12 DAY OF AUGUST, 2021.

WADE WEAVER, PLS. DEPUTY COUNTY SURVEYOR



TOPOGRAPHIC MAPPING PROJECT

COUNTY OF ORANGE OC PUBLIC WORKS OC SURVEY/FIELD SERVICES/BOUNDARY ANALYSIS & MAPPING			
NEWPORT AVE & LA LOMA DR TRAFFIC SIGNAL			
TITLE SHEET			
PROJECT LIMITS: INTERSECTION OF NEWPORT AVE & LA LOMA DR			
DATE OF SURVEY: 6/3/2021		BY: E. HERTZ & CREW	
MAPPING		BY: I. ISLAS	
OFFICE CHECK		BY: J. MORENO, PLS.	
FIELD CHECK		BY: E. HERTZ	
SCALE: N.T.S.		W.O. #ER198145	FILE #1819PW-IN0016
FILE: LA LOMA_AS-BUILT_2021.DWG			
MARK	DATE	ITEM	SHEET NO.
REVISIONS			1 of 3

MONUMENT NOTES

- 1

FOUND HEX BAR, DOWN 1.6' IN O.C.S. WELL MONUMENT, ACCEPTED AS INTERSECTION OF 17TH AND NEWPORT AVENUE PER (R12).
- 2

FOUND 2 1/2" PUNCHED BRASS DISK, STAMPED "LS 3246", DOWN 1.5' IN O.C.S. WELL MONUMENT, GPS POINT "6010", PER (R3) ACCEPTED AS THE CENTERLINE INTERSECTION OF NEW PORT AVENUE AND LA LOMA DRIVE PER (R7).
- 3

FOUND 2" PUNCHED BRASS DISK, DOWN 2'.0 IN O.C.S. WELL MONUMENT, GPS POINT "6009", ACCEPTED AS THE CENTERLINE INTERSECTION OF NEWPORT AVENUE AND FOOTHILL BLVD PER (R11).
- 4

FOUND GEAR SPIKE W/TAG, STAMPED "LS 5411", FLUSH IN A/C PER (R4), ACCEPTED AS THE CENTERLINE INTERSECTION OF NEW PORT AVENUE AND DOE RUN PER (R16)
- 5

FOUND O.C.S. BRASS DISK, DOWN 1.8' IN WELL MONUMENT PER (R5), ACCEPTED AS THE CENTERLINE INTERSECTION OF NEW PORT AVENUE AND DODGE AVENUE PER (R14).
- 6

FOUND 1" IRON PIPE, STAMPED "RCE 21005", DOWN 0.5' IN GRASS, AT N'LY CORNER OF PARCEL 2 PER (R6) ACCEPTED AS A POINT ON ESTABLISHED R/W OF LA LOMA DRIVE PER (R6).
- 7

FOUND LEAD, BRASS NAIL W/TAG, STAMPED "O.C.S. TIE", FLUSH IN CONCRETE CURB, ACCEPTED FOR TIES PER (R1).
- 8

FOUND LEAD, BRASS NAIL W/TAG, STAMPED "LS 5411", FLUSH IN CONCRETE CURB ACCEPTED FOR TIES PER (R2).
- 9

FOUND SPIKE AND TIN, DOWN 0.2' IN A/C, ACCEPTED AS A POINT ON THE CENTERLINE OF LA LOMA DRIVE PER (R7).
- 10

FOUND LEAD, BRASS NAIL W/TAG IN CONCRETE CURB, ACCEPTED FOR TIES PER (R8).
- 11

FOUND SPIKE W/TAG, STAMPED "LS 5411", FLUSH IN A/C PER (R13), FITS TIES PER (R13), S54°10'35"E 0.14' FROM ESTABLISHED CENTERLINE OF NEW PORT AVENUE.
- 12

FOUND SPIKE W/O.C.S. TAG, STAMPED "SURVEY MARK", FLUSH IN A/C PER (R1), ACCEPTED AS A POINT ON THE CENTERLINE OF NEW PORT AVENUE.
- 13

FOUND GEAR SPIKE W/WASHER, STAMPED "LS 5411", FLUSH IN A/C PER (R2), ACCEPTED AS THE CENTERLINE INTERSECTION OF NEW PORT AVENUE AND RAVENCREST ROAD.
- 14

FOUND LEAD, BRASS NAIL W/TAG, STAMPED "LS 5411", FLUSH IN A/C PER, TIES FIT FOR MONUMENT **11** PER (R13).
- 15

FOUND 2" BRASS DISK IN WELL MONUMENT, ACCEPTED AS THE CENTERLINE INTERSECTION OF LA LOMA DRIVE AND ARROYO AVENUE PER (R6).
- 16

FOUND 1" IRON PIPE STAMPED "RCE 21005", DOWN 0.5' IN GRASS, AT E'LY CORNER OF PARCEL 2 PER (R6) N40°44'25"E 0.10' FROM ESTABLISHED LA LOMA DRIVE R/W.

REFERENCES

- (R1) = CORNER RECORD, C.R. 2011-1959B  
(R2) = CORNER RECORD, C.R. 2011-4049B  
(R3) = CORNER RECORD, C.R. 2011-4059B  
(R4) = CORNER RECORD, C.R. 2011-4043B  
(R5) = CORNER RECORD, C.R. 2011-4061B  
(R6) = PARCEL MAP NO. 90-162, P.M.B. 261/32-34  
(R7) = TRACT NO. 5576, MM 224/4-6  
(R8) = O.C.S. ALIGNMENT NOTE A/5-9, PGS. 593-617  
(R9) = PARCEL MAP, P.M.B. 93/5-6  
(R10) = O.C.S. ALIGNMENT NOTE A/5-9, PGS. 649-654  
(R11) = O.C.S. ALIGNMENT NOTE A/NE-IRV/2414-2421  
(R12) = TRACT NO. 8721, M.M. 393/35-40  
(R13) = CORNER RECORD, C.R. 2011-4052B  
(R14) = TRACT NO. 10398, M.M. 455/22-23  
(R15) = TRACT NO. 1841, M.M. 52/30  
(R16) = O.C.S. ALIGNMENT NOTE A/5-9, PGS. 1058-1073

ESTABLISHMENT NOTES

- A

ESTABLISHED THE CENTERLINE OF NEWPORT AVENUE BY HOLDING MONUMENTS **1** AND **2**.
- B

ESTABLISHED THE CENTERLINE OF NEWPORT AVENUE BY HOLDING MONUMENTS **2** AND **3** PER (R14).
- C

ESTABLISHED THE R/W OF NEW PORT AVENUE PARALLEL AND 50' PERPENDICULAR FROM THE ESTABLISHED SAID CENTERLINE PER (R7).
- D

ESTABLISHED THE CENTERLINE OF LA LOMA DRIVE BY HOLDING MONUMENTS **2** AND **15** PER (R9).
- E

ESTABLISHED THE SW'LY R/W OF LA LOMA DRIVE PARALLEL AND 30' PERPENDICULAR FROM THE ESTABLISHMENT NOTE **D** PER (R6).
- F

SEARCHED FOUND NOTHING ESTABLISHED BY TIES PER (R8).
- G

ESTABLISHED THE CENTERLINE OF LA LOMA DRIVE BY HOLDING MONUMENT **9** AND ESTABLISHMENT NOTE **F** PER (R7).
- H

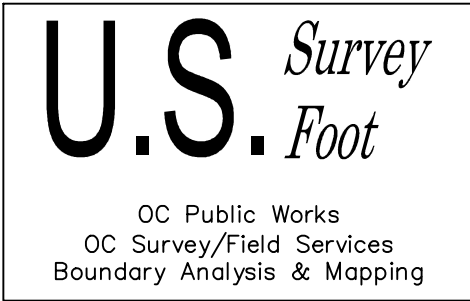
ESTABLISHED THE CENTERLINE OF LA LOMA DRIVE BY HOLDING TANGENCY FROM LINE ESTABLISHED BY ESTABLISHMENT NOTE **G** AT RECORD RADIUS PER (R7) TO MONUMENT **9**.
- I

ESTABLISHED THE R/W OF LA LOMA DRIVE PARALLEL AND 30' PERPENDICULAR FROM SAID ESTABLISHED CENTERLINE PER (R7).
- J

ESTABLISHED THE CURVE R/W OF NEWPORT AVENUE AND LA LOMA BY HOLDING RADIUS AND TANGENCY PER (R7).
- K

ESTABLISHED REVERSE CURVE FROM TERMINUS OF ESTABLISHMENT NOTE **J** AT RECORD RADIUS PER (R7) TO A POINT TANGENT WITH A LINE ESTABLISHED FROM MONUMENT **2**.
- L

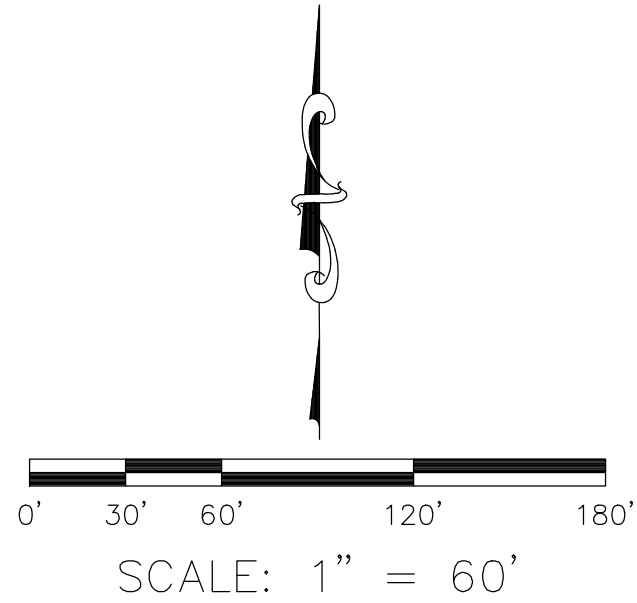
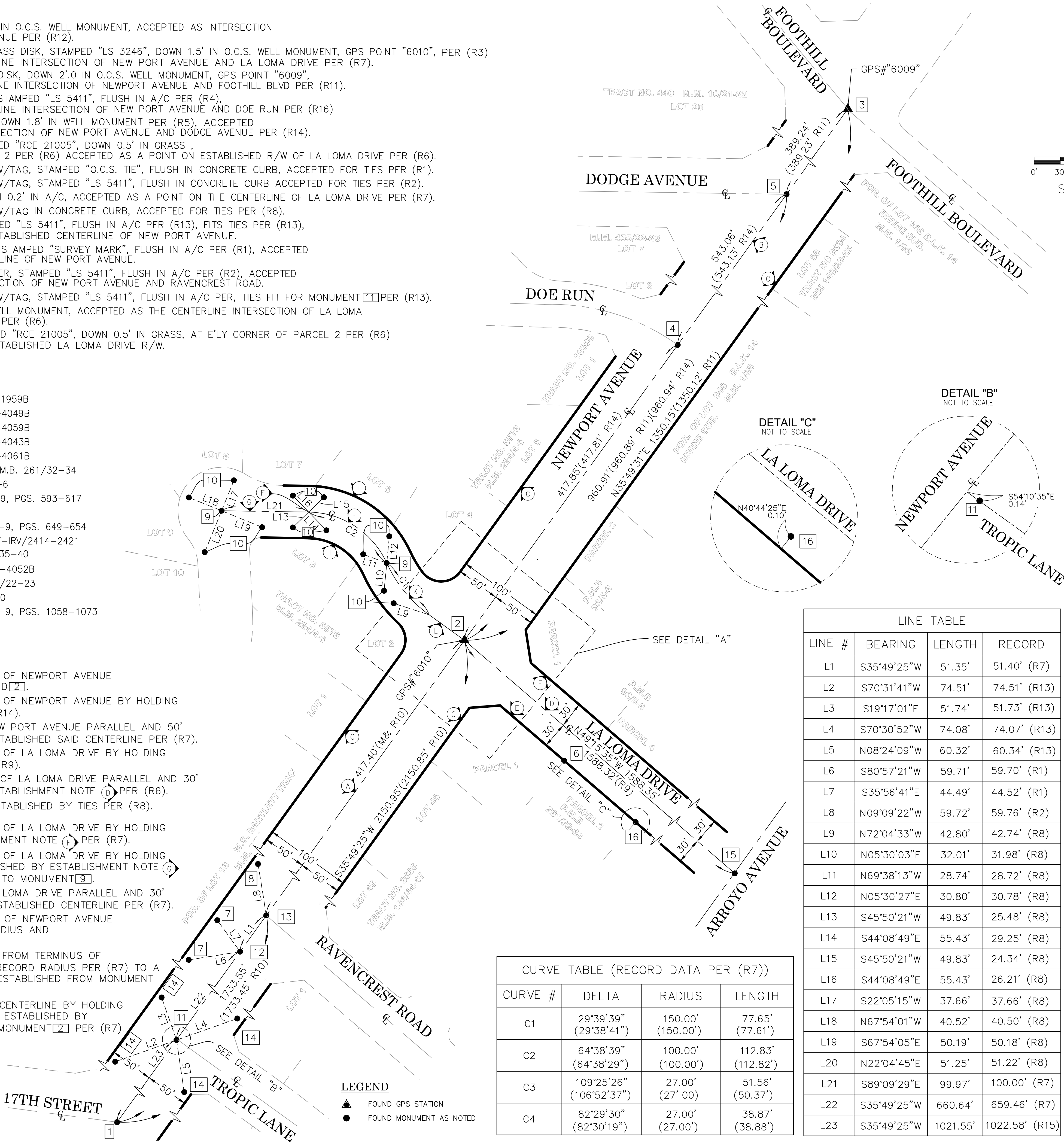
ESTABLISHED LA LOMA DRIVE CENTERLINE BY HOLDING TERMINUS OF REVERSE CURVE ESTABLISHED BY ESTABLISHMENT NOTE **K** AND MONUMENT **2** PER (R7).



- LEGEND
- FOUND GPS STATION
  - FOUND MONUMENT AS NOTED

CURVE TABLE (RECORD DATA PER (R7))			
CURVE #	DELTA	RADIUS	LENGTH
C1	29°39'39" (29°38'41")	150.00' (150.00')	77.65' (77.61')
C2	64°38'39" (64°38'29")	100.00' (100.00')	112.83' (112.82')
C3	109°25'26" (106°52'37")	27.00' (27'.00)	51.56' (50.37')
C4	82°29'30" (82°30'19")	27.00' (27.00')	38.87' (38.88')

LINE TABLE			
LINE #	BEARING	LENGTH	RECORD
L1	S35°49'25"W	51.35'	51.40' (R7)
L2	S70°31'41"W	74.51'	74.51' (R13)
L3	S19°17'01"E	51.74'	51.73' (R13)
L4	S70°30'52"W	74.08'	74.07' (R13)
L5	N08°24'09"W	60.32'	60.34' (R13)
L6	S80°57'21"W	59.71'	59.70' (R1)
L7	S35°56'41"E	44.49'	44.52' (R1)
L8	N09°09'22"W	59.72'	59.76' (R2)
L9	N72°04'33"W	42.80'	42.74' (R8)
L10	N05°30'03"E	32.01'	31.98' (R8)
L11	N69°38'13"W	28.74'	28.72' (R8)
L12	N05°30'27"E	30.80'	30.78' (R8)
L13	S45°50'21"W	49.83'	25.48' (R8)
L14	S44°08'49"E	55.43'	29.25' (R8)
L15	S45°50'21"W	49.83'	24.34' (R8)
L16	S44°08'49"E	55.43'	26.21' (R8)
L17	S22°05'15"W	37.66'	37.66' (R8)
L18	N67°54'01"W	40.52'	40.50' (R8)
L19	S67°54'05"E	50.19'	50.18' (R8)
L20	N22°04'45"E	51.25'	51.22' (R8)
L21	S89°09'29"E	99.97'	100.00' (R7)
L22	S35°49'25"W	660.64'	659.46' (R7)
L23	S35°49'25"W	1021.55'	1022.58' (R15)



NOTES

STREET R/W SHOWN IN BOLD ESTABLISHED BY SURVEY.  
THE LOT LINES ARE FOR GRAPHICAL PRESENTATION ONLY.

PILASTER AND BLOCK WALL ENCROACHED ALONG THE NW'LY R/W OF NEWPORT AVENUE.

ADDITIONAL BOUNDARY WORK WAS NOT PERFORMED AS A PART OF THIS AS-BUILT SURVEY. THE BOUNDARY SHOWN WAS PROVIDED FROM A PREVIOUS SURVEY SIGNED ON OCTOBER 22, 2019 AS A PART OF A TOPOGRAPHIC BOUNDARY SURVEY.

BASIS OF BEARINGS

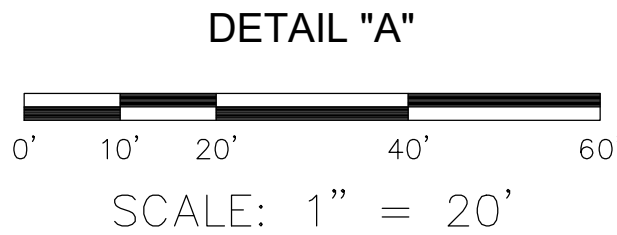
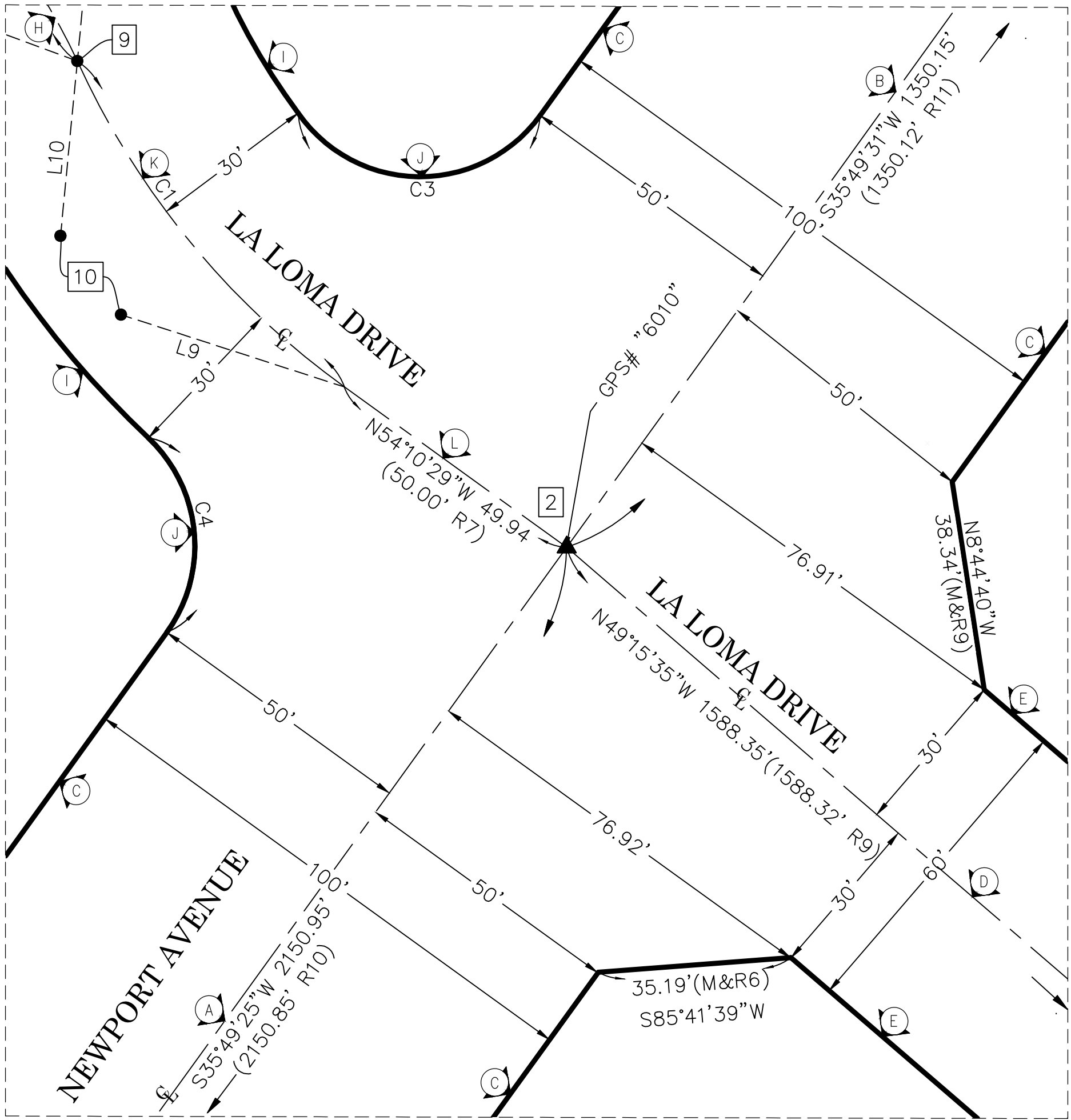
THE BASIS OF BEARINGS SHOWN HEREON ARE BASED ON THE CGPS STATIONS "OEOC" AND "SACY" HAVING A BEARING OF NORTH 80°43'39" EAST.

HORIZONTAL DATUM

THE COORDINATES SHOWN ARE BASED ON THE CALIFORNIA COORDINATE SYSTEM OF 1983 (CCS83), ZONE VI, 1983 NORTH AMERICAN DATUM (2007.00 EPOCH, O.C.S. GPS ADJUSTMENT).

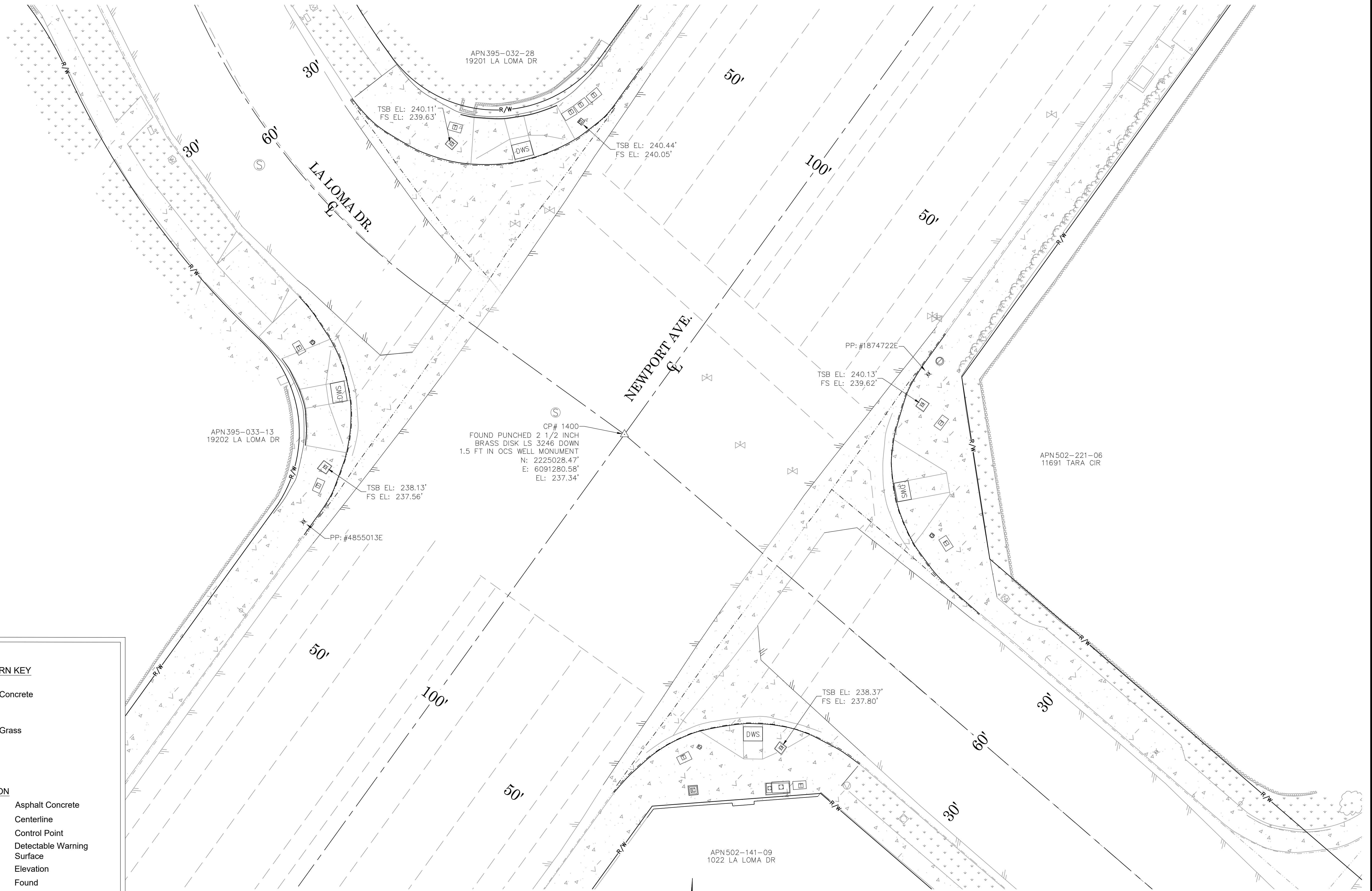
ALL DISTANCES SHOWN ARE GRID, UNLESS OTHERWISE NOTED. MULTIPLY THE GRID DISTANCE BY 1.00002398 TO OBTAIN GROUND DISTANCE.

ALL DISTANCES ARE BASED ON THE U.S. SURVEY FOOT.



			COUNTY OF ORANGE OC PUBLIC WORKS OC SURVEY/FIELD SERVICES/BOUNDARY ANALYSIS & MAPPING					
			NEWPORT AVE. AND LA LOMA DR. TRAFFIC SIGNAL UPGRADES					
			BOUNDARY ANALYSIS					
			PROJECT LIMITS: 500' NORTH AND SOUTH ALONG NEWPORT AVE FROM LA LOMA DRIVE, AND 300' EAST ALONG LA LOMA FROM NEWPORT AVE.					
			DATE OF SURVEY: AUGUST 2019		BY: R. MACIAS & PARTY		SHEET NO.  2 of 3	
			BOUNDARY MAPPING		BY: F. DADASHI			
			OFFICE CHECK		BY: E. MEDINA, PLS			
			FIELD CHECK		BY: R. MACIAS, PLS			
			MARK	DATE	ITEM	FIELD CHECK		
			REVISIONS			SCALE: 1" = 60'	W.O. # EQ19815	FILE NO.
			FILE: NEWPORT_AVE_BOUNDARY_2019.DWG					

NOTE:  
AS-BUILT TOPOGRAPHIC SURVEY PERFORMED AT CURB  
RETURNS ONLY. ALL TOPOGRAPHIC FEATURES SHOWN  
OUTSIDE OF CURB RETURN AREAS ARE FROM  
PREVIOUS TOPOGRAPHIC SURVEY DATED SEPTEMBER  
2019.



## LEGEND

### SYMBOL

- Pull Box Cable TV
- Control Box Electrical
- Control Box Undefined
- Control Point
- Mailbox
- Manhole Sewer
- Meter Water
- Pull Box Traffic
- Sign Post
- Traffic Signal
- Traffic Signal w/ Light
- Utility Pole, Underground
- Valve Gas
- Valve Water
- Vent Pipe

### AREA PATTERN KEY

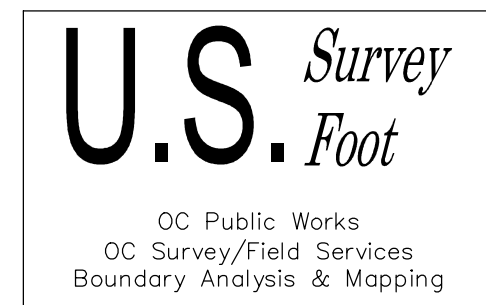
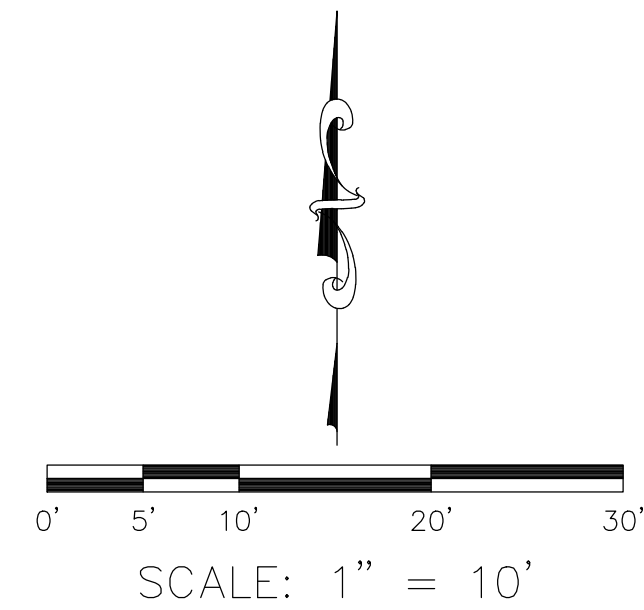
- Concrete
- Grass

### ABBREVIATION

- AC Asphalt Concrete
- CL Centerline
- CP Control Point
- DWS Detectable Warning Surface
- EL Elevation
- FD Found
- FS Finished Surface
- TSB Traffic Signal Base

### LINE PATTERN KEY

- Edge of Concrete
- Edge of Asphalt Pavement
- Flowline
- Right of Way



COUNTY OF ORANGE OC PUBLIC WORKS OC SURVEY/FIELD SERVICES/BOUNDARY ANALYSIS & MAPPING			
NEWPORT AVE & LA LOMA DR TRAFFIC SIGNAL			
AS-BUILT			
PROJECT LIMITS: INTERSECTION OF NEWPORT AVE & LA LOMA DR			
DATE OF SURVEY: 6/3/2021		BY: E. HERTZ & CREW	
MAPPING		BY: I. ISLAS	
OFFICE CHECK		BY: J. MORENO, PLS	
FIELD CHECK		BY: E. HERTZ	
SCALE: 1"=10'		W.O. #ER198145	FILE #1819PW-IN0016
FILE: LA LOMA_AS-BUILT_2021.DWG			
MARK	DATE	ITEM	SHEET NO.
REVISIONS			3 of 3