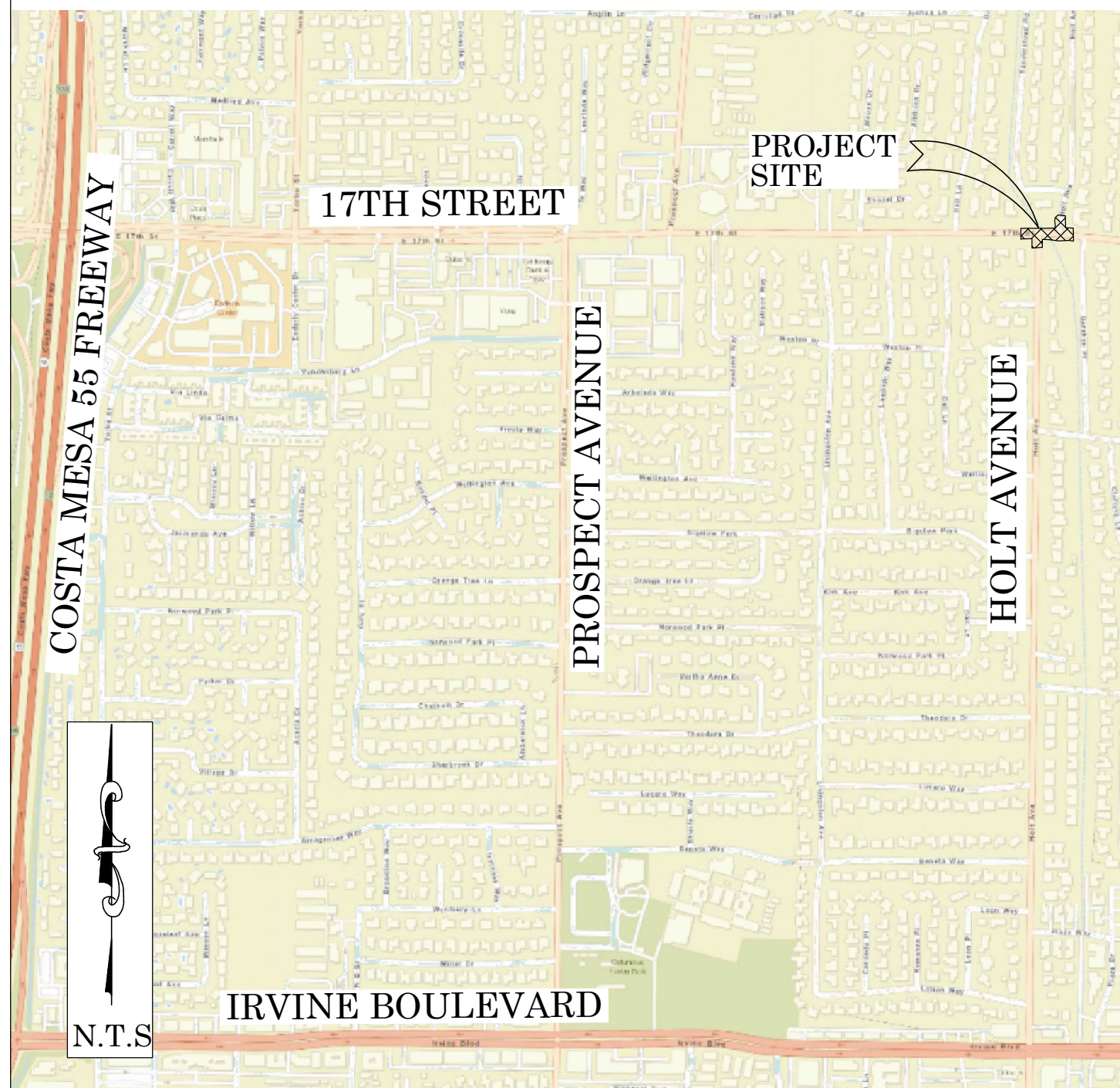




OC PUBLIC WORKS DEPARTMENT
JAMES TREADAWAY, P.E., S.E., DIRECTOR
KEVIN HILLS, P.L.S., COUNTY SURVEYOR
17TH ST AND HOLT AVE
TRAFFIC SIGNALS UPGRADE



LOCATION MAP



SENIOR LAND SURVEYOR'S CERTIFICATE:

THIS MAP CORRECTLY REPRESENTS A SURVEY MADE BY ME OR UNDER MY DIRECTION IN CONFORMANCE WITH REQUIREMENTS OF THE PROFESSIONAL LAND SURVEYOR'S ACT; THIS 01 DAY OF JULY, 2020.

MICHAEL KUBISTY, PLS. SENIOR LAND SURVEYOR



DEPUTY COUNTY SURVEYOR'S STATEMENT:

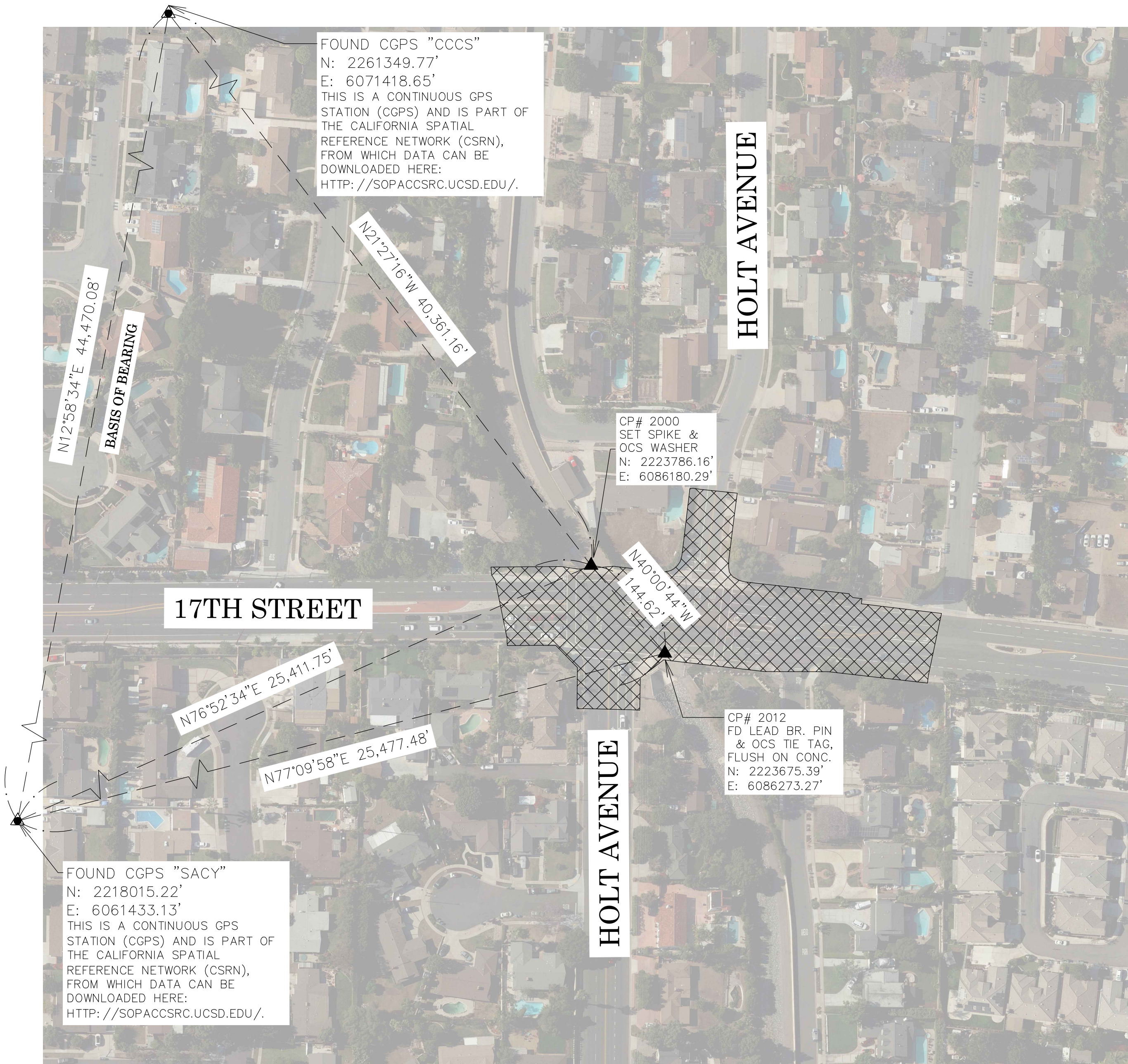
THIS MAP HAS BEEN EXAMINED IN ACCORDANCE WITH THE PROFESSIONAL LAND SURVEYOR'S ACT; THIS 01 DAY OF JULY, 2020.

WADE WEAVER, PLS. DEPUTY COUNTY SURVEYOR



U.S. Survey
Foot

OC Public Works
OC Survey/Field Services
Boundary Analysis & Mapping



BASIS OF BEARINGS

THE BASIS OF BEARINGS FOR THIS SURVEY IS BASED ON THE CALIFORNIA COORDINATE SYSTEM (CCS83), ZONE VI, NAD 83, OCS (2017.50) EPOCH ADJUSTMENT, AS DETERMINED LOCALLY BY A LINE BETWEEN CONTINUOUS GLOBAL POSITIONING STATIONS CGPS STATIONS CCCS AND SACY BEING NORTH 12°58'34" EAST AS DERIVED FROM THE COORDINATES PUBLISHED BY THE CALIFORNIA SPATIAL REFERENCE CENTER (CSRC) ALONG WITH DATA SHEETS ON FILE IN THE OFFICE OF THE ORANGE COUNTY SURVEYOR.

HORIZONTAL DATUM

COORDINATES SHOWN ARE BASED ON THE CALIFORNIA COORDINATE SYSTEM (CCS83), ZONE VI, NAD 83, OCS (2017.50) EPOCH ADJUSTMENT.

ALL DISTANCES SHOWN ARE GRID, UNLESS OTHERWISE NOTED. TO OBTAIN GROUND DISTANCES MULTIPLY GRID BY A COMBINED FACTOR OF 1.00002126.

COMBINATION FACTOR WAS HELD AT: #2000
N: 2223786.16' E: 6086180.29' ELEVATION= 176.31'

NOTES

THE SURVEY INFORMATION SHOWN HEREON IS TO BE USED FOR TOPOGRAPHIC RELATIONSHIPS ONLY AND IS NOT INTENDED FOR THIS LAND ACQUISITION OR BOUNDARY PURPOSES.

SHEET INDEX

SHEET	NO.	DESCRIPTION
SHEET	1	TITLE SHEET
SHEET	2	TOPOGRAPHIC MAP

PURPOSE OF SURVEY

THE PURPOSE OF THE SURVEY IS TO PROVIDE A POST-CONSTRUCTION AS-BUILT FOR THIS TRAFFIC SIGNAL UPGRADE PROJECT.

AS-BUILT MAPPING PROJECT

COUNTY OF ORANGE OC PUBLIC WORKS/ENGINEERING SERVICES OC SURVEY/FIELD SERVICES/BOUNDARY ANALYSIS & MAPPING			
17TH ST AND HOLT AVE TRAFFIC SIGNALS UPGRADE			
TITLE SHEET			
PROJECT LIMITS: INTERSECTION OF 17TH STREET AND HOLT AVENUE			
DATE OF SURVEY: 05/26/2020	BY: J. RUSSO & PARTY	SHEET NO. 1 of 2	
MAPPING	BY: L. ISLAS		
OFFICE CHECK	BY: M. KUBISTY, PLS.		
FIELD CHECK	BY: J. RUSSO		
SCALE: N.T.S.	W.O. #ER18022		
REVISIONS		FILE: 17TH ST AND HOLT AVE_TOPO_2020.DWG	

PROSPECT AVENUE

17TH STREET

HOLT AVENUE

HOLT AVENUE

GERSHON PLACE

LEGEND

SYMBOL

- Backflow Preventer Device
- Benchmark
- Bus Stop Enclosure
- Control Point
- Fire Hydrant
- Guy Wire Anchor
- Mailbox
- Manhole Electrical
- Manhole Sewer
- Manhole Storm Drain
- Meter Electrical
- Meter Water
- Pedestrian Activator
- Pull Box Electrical
- Pull Box Traffic
- Sign Post
- Street Light
- Traffic Signal
- Tree
- Utility Pole
- Valve Gas
- Valve Water
- Vent Pipe

LINE PATTERN KEY

- Centerline
- Edge of Concrete
- Edge of Asphalt Pavement
- Flowline
- Right of Way
- Striping

AREA PATTERN KEY

- Brick
- Concrete
- Dirt
- Grass

ABBREVIATION

- CP Control Point
- EL Elevation
- FD Found
- OCS Orange County Surveyor
- U.P. Utility Pole

LEGEND

- FOUND MONUMENT AS NOTED
- SEARCHED FOUND NOTHING

REFERENCES

- (R1) = TRACT NO. 5391 MM 209/40-41
- (R2) = RECORD OF SURVEY NO. 2005-1028 R.S.B. 228/43-44
- (R3) = TRACT NO. 15168 MM 746/1-4
- (R4) = TRACT NO. 3687 MM 170/30-32
- (R5) = CORNER RECORD, C.R. 2012-4404
- (R6) = TRACT NO. 1966 MM 122/31-32

ESTABLISHMENT NOTES

- ESTABLISHED C/L OF SEVENTEENTH ST. HOLDING A LINE BETWEEN MONUMENTS [2] AND [4].
- ESTABLISHED C/L OF SEVENTEENTH ST. HOLDING A LINE BETWEEN MONUMENTS [1] AND [2].
- ESTABLISHED C/L OF S. HOLT AVE BY HOLDING A MEAN RECORD ANGLE PER (R6) AND (R4) AT MONUMENT [2] FROM LINE ESTABLISHMENT [B].
- ESTABLISHED C/L OF GERSHON PL BY HOLDING A RECORD ANGLE PER (R2) AT MONUMENT [3] FROM LINE ESTABLISHMENT [A].
- ESTABLISHED C/L INTERSECTION OF N. HOLT AVE AND 17TH ST. BY HOLDING A RECORD ANGLE PER (R4) AT MONUMENT [2] FROM LINE ESTABLISHMENT [A].
- ESTABLISHED C/L INTERSECTION OF N. HOLT AVE AND 17TH ST. BY PROPORTION PER (R4) BETWEEN MONUMENT [2] AND ESTABLISHMENT NOTE [D].
- ESTABLISHED INTERSECTION OF THE C/L OF 17TH ST. AND THE S'LY PROLONGATION OF THE W'LY LINE OF (R4)

ALIGNMENT NOTES

THE ALIGNMENT SHOWN HEREON WAS DEVELOPED BY HOLDING AN ASSUMED STATION OF 10+00 AT FOUND MONUMENT [1] AND INCREASING E'LY ALONG THE ESTABLISHED CENTERLINE OF 17TH ST.

MONUMENT NOTES

- FD NAIL & TAG STAMPED OC SURVEY IN WELL MONUMENT PER (R2), DN 1.6' IN A.C., ACCEPTED AS C/L INTERSECTION OF HOLT AVE & SEVENTEENTH STREET.
- FD NAIL & TAG STAMPED OC SURVEY IN WELL MONUMENT PER (R2), DN 1.6' IN A.C., ACCEPTED AS C/L INTERSECTION OF HOLT AVE & SEVENTEENTH STREET.
- FD SPIKE & TAG STAMPED O.C.S. PER (R2), FLUSH IN A.C., ACCEPTED AS INTERSECTION C/L INTERSECTION OF GERSHON PLACE AND SEVENTEENTH STREET
- FD PUNCHED HEX BAR IN WELL MONUMENT PER (R5), DN 1.3' IN A.C. ACCEPTED AS INTERSECTION C/L INTERSECTION OF NORTH PROSPECT AVENUE AND SEVENTEENTH STREET

0' 10' 20' 40' 60'

SCALE: 1" = 20'



COUNTY OF ORANGE OC PUBLIC WORKS/ENGINEERING SERVICES OC SURVEY/FIELD SERVICES/BOUNDARY ANALYSIS & MAPPING			
17TH ST AND HOLT AVE TRAFFIC SIGNALS UPGRADE			
TOPOGRAPHIC MAP			
PROJECT LIMITS: INTERSECTION OF 17TH STREET AND HOLT AVENUE		SHEET NO.	
DATE OF SURVEY: 05/26/2020		BY: J. RUSSO & PARTY	
MAPPING		BY: L. ISLAS	
OFFICE CHECK		BY: M. KUBISTY, PLS	
FIELD CHECK		BY: J. RUSSO	
SCALE: 1" = 20'		W.O. #ER18022 FILE #1920PW-CM0015	
REVISIONS		FILE: 17TH ST AND HOLT AVE_TOPO_2020.DWG	