

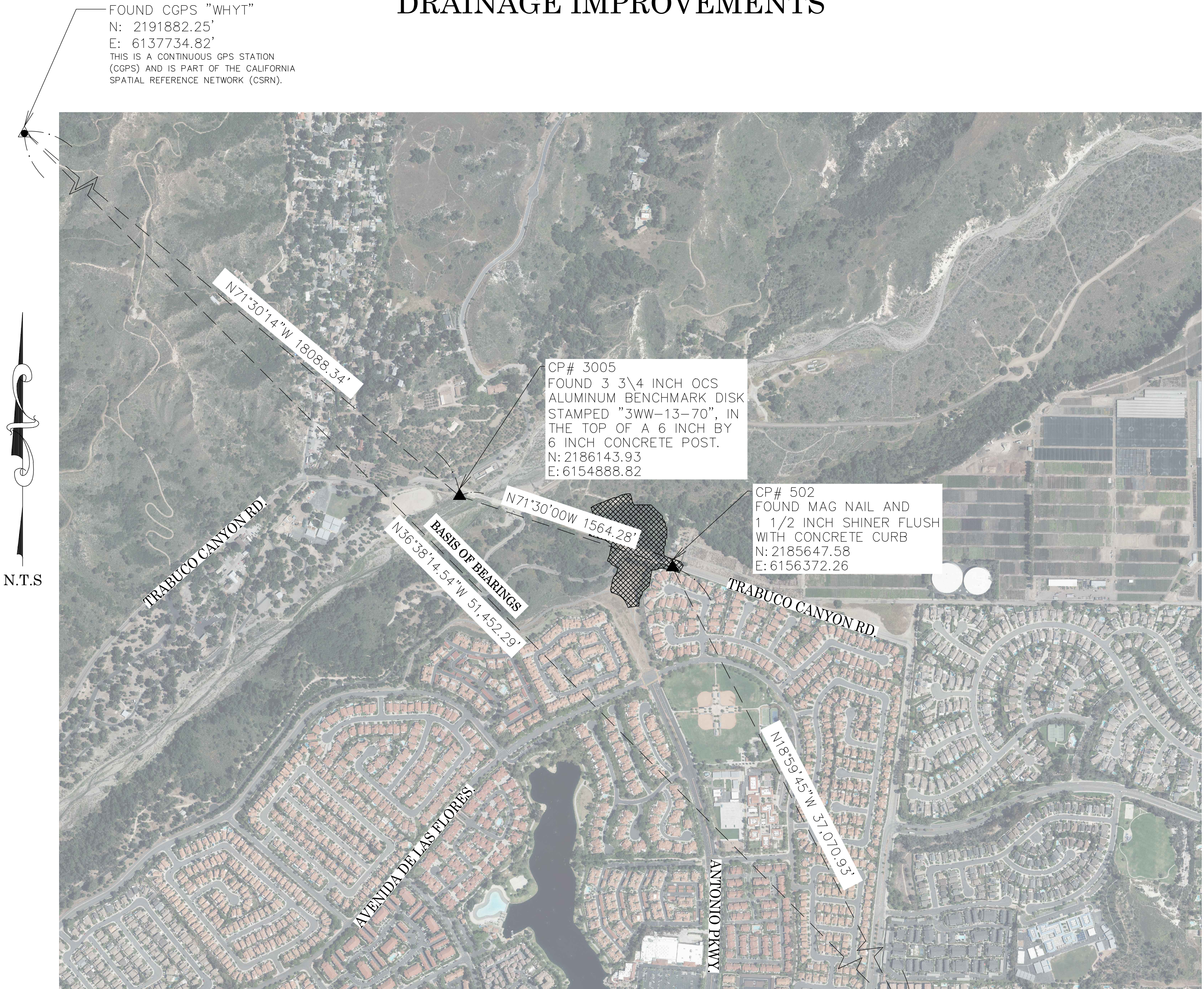
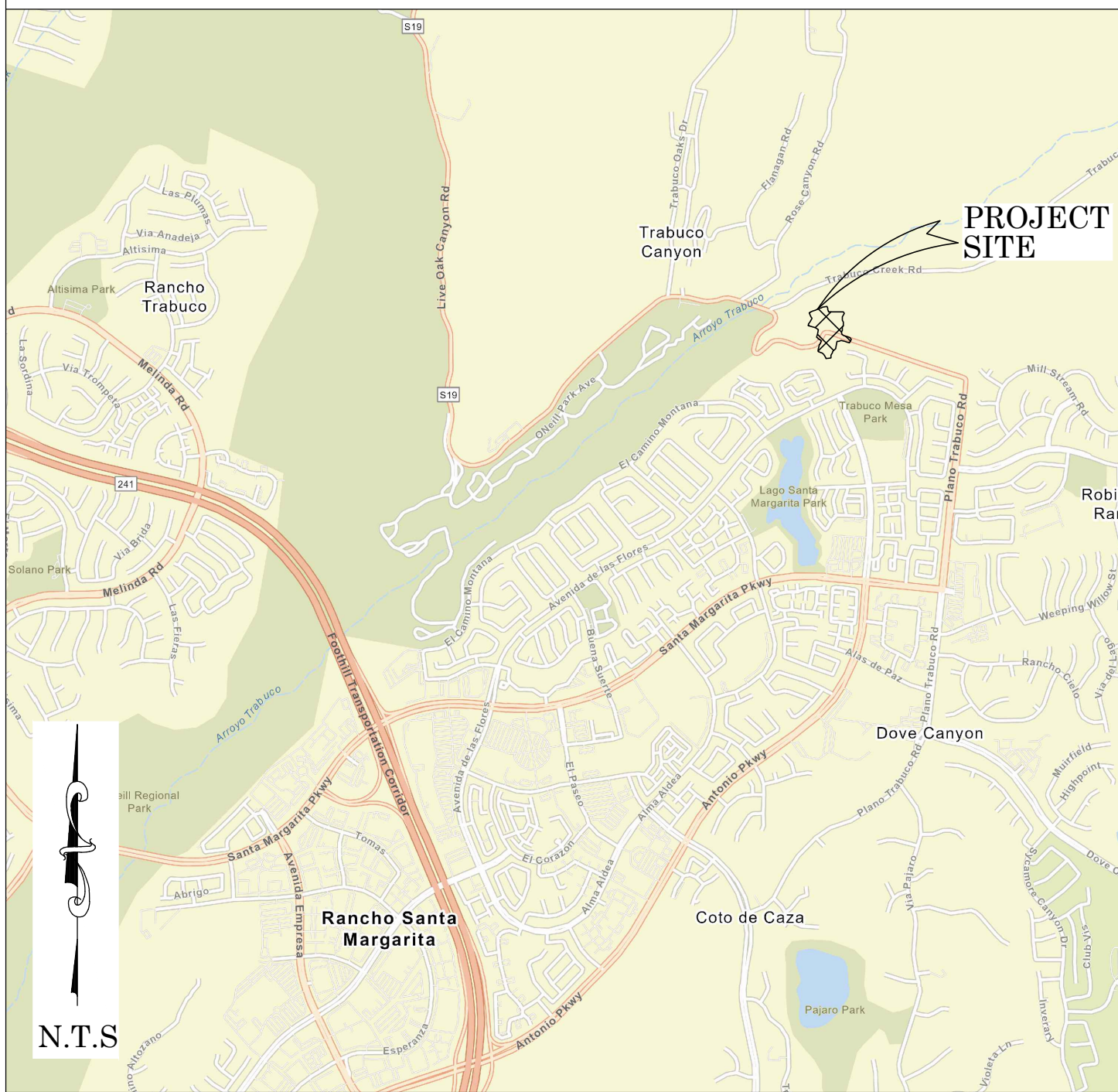


OC PUBLIC WORKS DEPARTMENT  
JAMES TREADAWAY, DIRECTOR OF PUBLIC WORKS  
KEVIN HILLS, COUNTY SURVEYOR  
TRABUCO CANYON ROAD



DRAINAGE IMPROVEMENTS

LOCATION MAP



BASIS OF BEARINGS

THE BASIS OF BEARINGS FOR THIS SURVEY IS BASED ON THE CALIFORNIA COORDINATE SYSTEM (CCS83), ZONE VI, NAD 83, OCS (2017.50) EPOCH ADJUSTMENT, AS DETERMINED LOCALLY BY A LINE BETWEEN CONTINUOUS GLOBAL POSITIONING STATIONS CGPS STATIONS (P471) AND (WHYT) BEING NORTH 36°38'14.54\"/>

HORIZONTAL DATUM

COORDINATES SHOWN ARE BASED ON THE CALIFORNIA COORDINATE SYSTEM (CCS83), ZONE VI, NAD 83, OCS (2017.50) EPOCH ADJUSTMENT.  
ALL DISTANCES SHOWN ARE GRID, UNLESS OTHERWISE NOTED. TO OBTAIN GROUND DISTANCES MULTIPLY GRID BY A COMBINED FACTOR OF 1.00007254.  
THIS COMBINATION FACTOR WAS DERIVED BY HOLDING POINT #3005  
N: 2186143.93' E: 6154888.82' ELEV.=1003.88'  
ALL DISTANCES ARE BASED ON THE U.S. SURVEY FOOT.

VERTICAL DATUM

O.C.S. BM. 3WW-13-70 ELEV. = 1024.565' YEAR LEVELED: 1990  
NAVD 1988 (O.C.S. 1995 ADJUSTMENT)  
DESCRIPTION: FOUND 3 3/4\"/>

NOTES

THE SURVEY INFORMATION SHOWN HEREON IS TO BE USED FOR TOPOGRAPHIC RELATIONSHIPS ONLY AND IS NOT INTENDED FOR LAND ACQUISITION OR BOUNDARY PURPOSES.

SHEET INDEX

SHEET NO.	DESCRIPTION
SHEET 1	TITLE SHEET
SHEET 2-3	TOPOGRAPHIC MAP

PURPOSE OF SURVEY

THE PURPOSE OF THE SURVEY IS TO PROVIDE A TOPOGRAPHIC MAP AND ROW ESTABLISHMENT FOR THIS PORTION OF TRABUCO CANYON ROAD.

SENIOR LAND SURVEYOR'S CERTIFICATE:

THIS MAP CORRECTLY REPRESENTS A SURVEY MADE BY ME OR UNDER MY DIRECTION IN CONFORMANCE WITH REQUIREMENTS OF THE PROFESSIONAL LAND SURVEYORS' ACT; THIS 17 DAY OF FEBRUARY, 2023.

JESOM MORENO, PLS.

SENIOR LAND SURVEYOR



SENIOR LAND SURVEYOR'S STATEMENT:

THIS MAP HAS BEEN EXAMINED IN ACCORDANCE WITH THE PROFESSIONAL LAND SURVEYORS' ACT; THIS 17 DAY OF FEBRUARY, 2023.

ELLIOTT MEDINA

ELLIOTT MEDINA, PLS.

SENIOR LAND SURVEYOR



U.S. Survey Foot

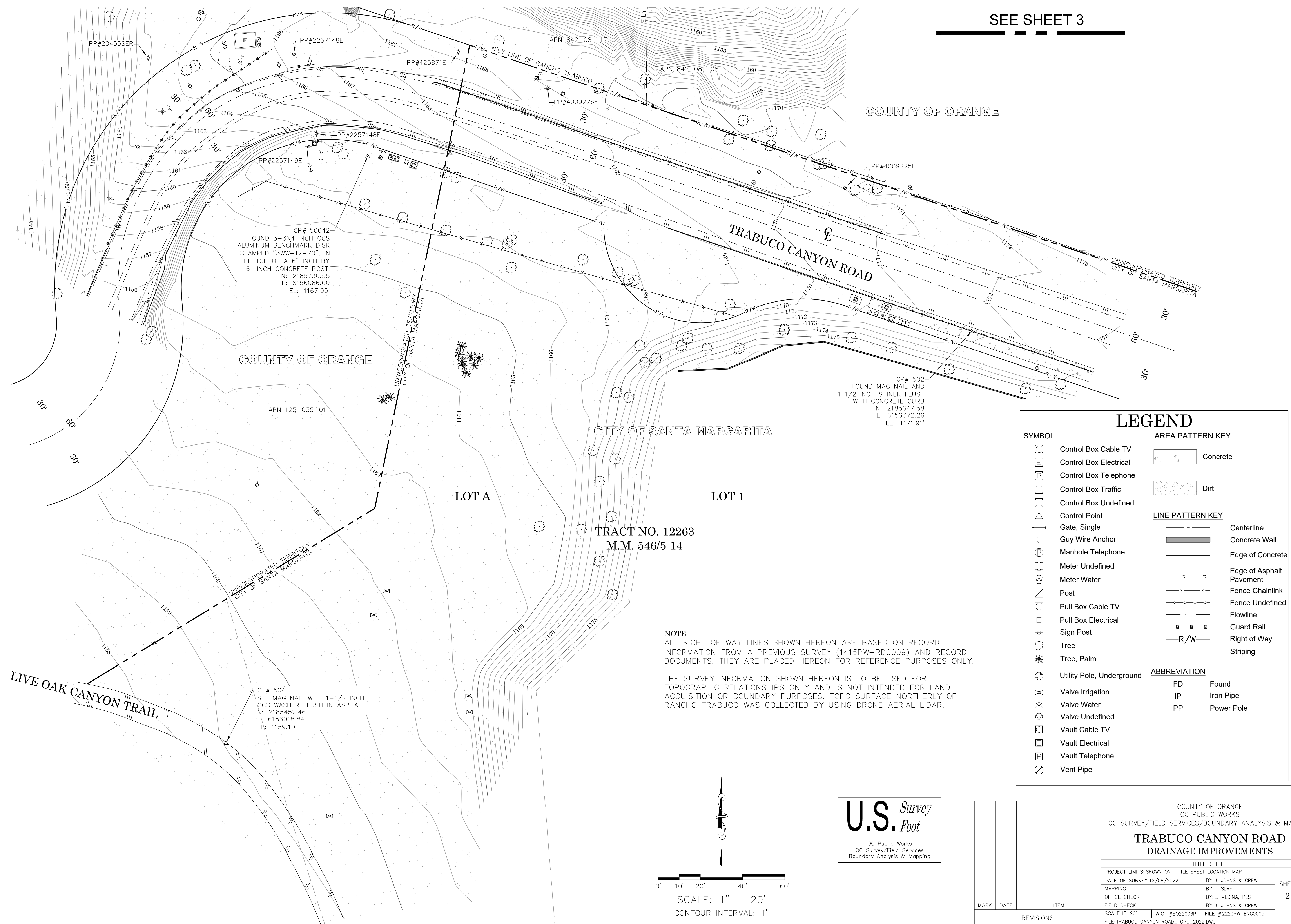
OC Public Works  
OC Survey/Field Services  
Boundary Analysis & Mapping

TOPOGRAPHIC MAPPING PROJECT

			COUNTY OF ORANGE OC PUBLIC WORKS OC SURVEY/FIELD SERVICES/BOUNDARY ANALYSIS & MAPPING			
			TRABUCO CANYON ROAD DRAINAGE IMPROVEMENTS			
			TITLE SHEET			
			PROJECT LIMITS: SHOWN ON TITLE SHEET LOCATION MAP			
			DATE OF SURVEY:12/08/2022	BY: J. JOHNS & CREW	SHEET NO.  1 of  3	
			MAPPING	BY: I. ISLAS		
			OFFICE CHECK	BY: E. MEDINA, PLS		
			FIELD CHECK	BY: J. JOHNS & CREW		
			SCALE: N.T.S.	W.O. #E022006P	FILE # 2223PW-ENG0005	
			FILE: TRABUCO CANYON ROAD_TOPO_2022.DWG			
MARK	DATE	ITEM	REVISIONS			



SEE SHEET 3



CP# 50642  
FOUND 3-3/4 INCH OCS  
ALUMINUM BENCHMARK DISK  
STAMPED "3WW-12-70", IN  
THE TOP OF A 6" INCH BY  
6" INCH CONCRETE POST.  
N: 2185730.55  
E: 6156086.00  
EL: 1167.95'

CP# 502  
FOUND MAG NAIL AND  
1 1/2 INCH SHINER FLUSH  
WITH CONCRETE CURB  
N: 2185647.58  
E: 6156372.26  
EL: 1171.91'

CP# 504  
SET MAG NAIL WITH 1-1/2 INCH  
OCS WASHER FLUSH IN ASPHALT  
N: 2185452.46  
E: 6156018.84  
EL: 1159.10'

**NOTE**  
ALL RIGHT OF WAY LINES SHOWN HEREON ARE BASED ON RECORD  
INFORMATION FROM A PREVIOUS SURVEY (1415PW-RD0009) AND RECORD  
DOCUMENTS. THEY ARE PLACED HEREON FOR REFERENCE PURPOSES ONLY.

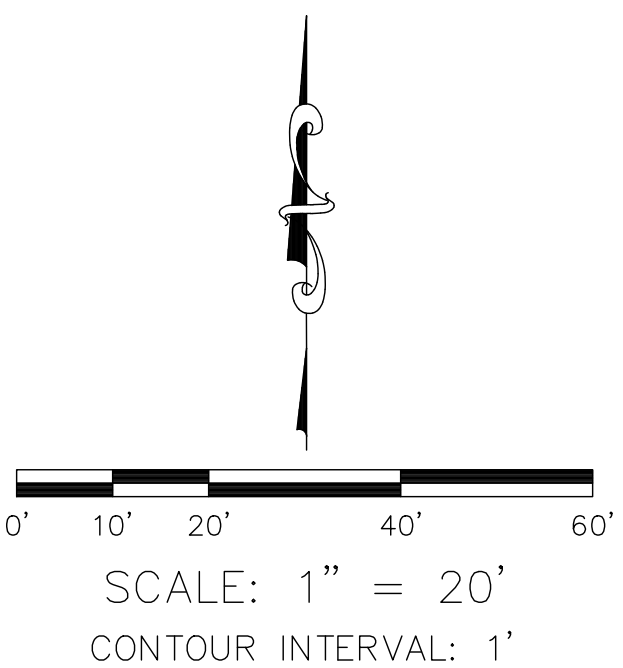
THE SURVEY INFORMATION SHOWN HEREON IS TO BE USED FOR  
TOPOGRAPHIC RELATIONSHIPS ONLY AND IS NOT INTENDED FOR LAND  
ACQUISITION OR BOUNDARY PURPOSES. TOPO SURFACE NORTHERLY OF  
RANCHO TRABUCO WAS COLLECTED BY USING DRONE AERIAL LIDAR.

**LEGEND**

**SYMBOL**

**AREA PATTERN KEY**  
  
**LINE PATTERN KEY**

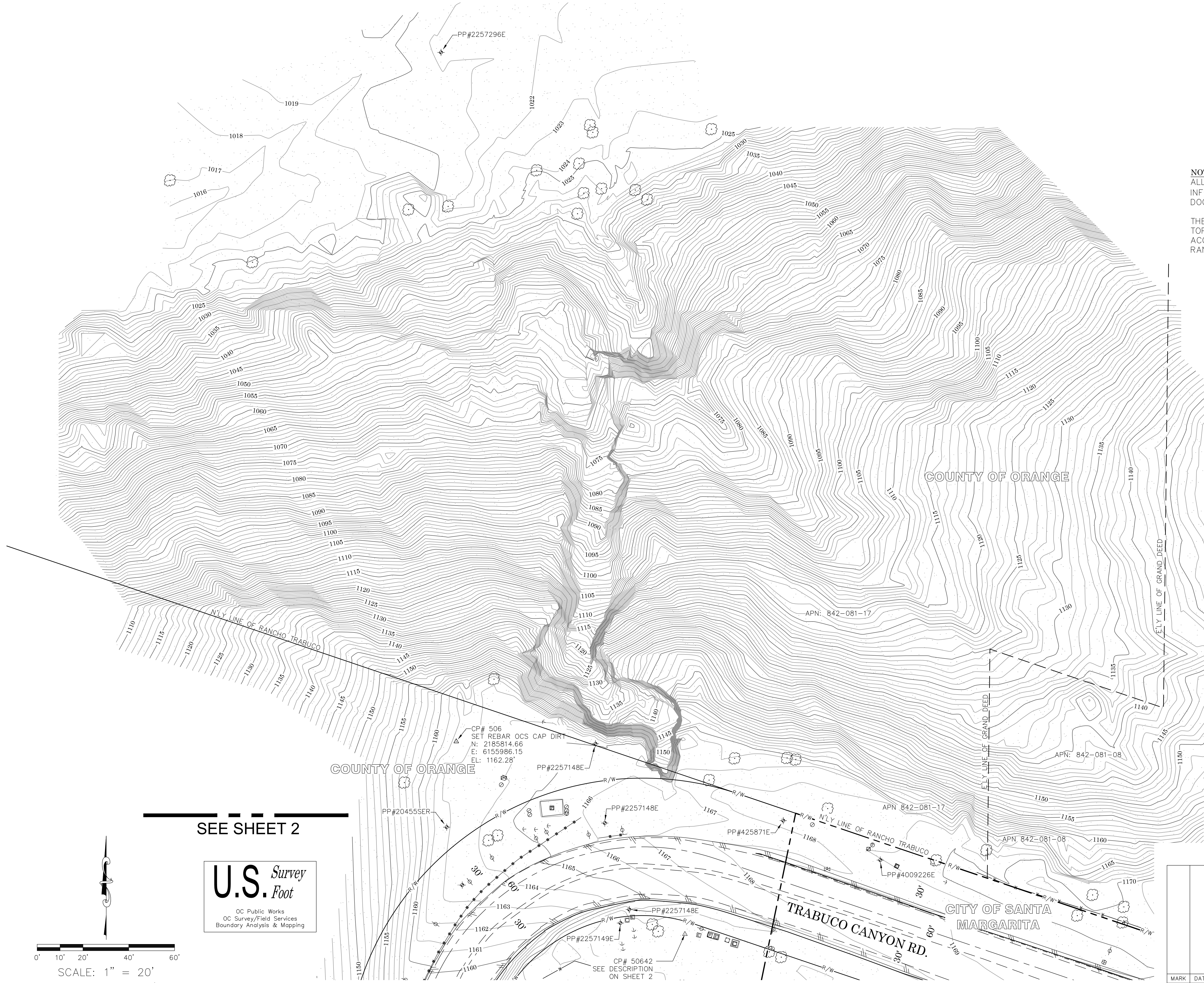
**ABBREVIATION**  
FD Found  
IP Iron Pipe  
PP Power Pole



**U.S. Survey**  
*Foot*  
OC Public Works  
OC Survey/Field Services  
Boundary Analysis & Mapping

		COUNTY OF ORANGE OC PUBLIC WORKS OC SURVEY/FIELD SERVICES/BOUNDARY ANALYSIS & MAPPING	
TRABUCO CANYON ROAD DRAINAGE IMPROVEMENTS			
TITLE SHEET			
PROJECT LIMITS: SHOWN ON TITLE SHEET LOCATION MAP			
DATE OF SURVEY:12/08/2022		BY: J. JOHNS & CREW	SHEET NO.  2 of 3
MAPPING		BY: I. ISLAS	
OFFICE CHECK		BY: E. MEDINA, PLS	
FIELD CHECK		BY: J. JOHNS & CREW	
MARK	DATE	ITEM	REVISIONS
		SCALE: 1"=20'	W.O. #EQ22006P
		FILE # 2223PW-ENG0005	
		FILE: TRABUCO CANYON ROAD_TOPO_2022.DWG	





**NOTE**  
ALL RIGHT OF WAY LINES SHOWN HEREON ARE BASED ON RECORD INFORMATION FROM A PREVIOUS SURVEY (1415PW-RD0009) AND RECORD DOCUMENTS. THEY ARE PLACED HEREON FOR REFERENCE PURPOSES ONLY.

THE SURVEY INFORMATION SHOWN HEREON IS TO BE USED FOR TOPOGRAPHIC RELATIONSHIPS ONLY AND IS NOT INTENDED FOR LAND ACQUISITION OR BOUNDARY PURPOSES. TOPO SURFACE NORTHERLY OF RANCHO TRABUCO WAS COLLECTED BY USING DRONE AERIAL LIDAR.

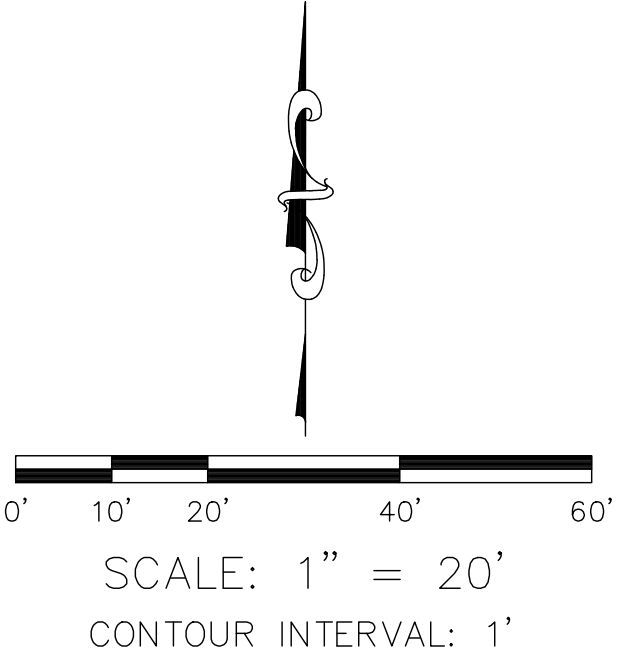
## LEGEND

SYMBOL	AREA PATTERN KEY

LINE PATTERN KEY	ABBREVIATION
	FD Found
	IP Iron Pipe
	PP Power Pole

SEE SHEET 2

**U.S. Foot**  
OC Public Works  
OC Survey/Field Services  
Boundary Analysis & Mapping



			COUNTY OF ORANGE OC PUBLIC WORKS OC SURVEY/FIELD SERVICES/BOUNDARY ANALYSIS & MAPPING			
			TRABUCO CANYON ROAD DRAINAGE IMPROVEMENTS			
			TITLE SHEET			
			PROJECT LIMITS: SHOWN ON TITLE SHEET LOCATION MAP			
			DATE OF SURVEY:12/08/2022	BY: J. JOHNS & CREW		SHEET NO.
			MAPPING	BY: I. ISLAS		
			OFFICE CHECK	BY: E. MEDINA, PLS		3 of
			FIELD CHECK	BY: J. JOHNS & CREW		
			SCALE:1"=20'	W.O. #E022006P	FILE # 2223PW-ENG0005	3
			FILE: TRABUCO CANYON ROAD_TOPO_2022.DWG			
MARK	DATE	ITEM	REVISIONS			