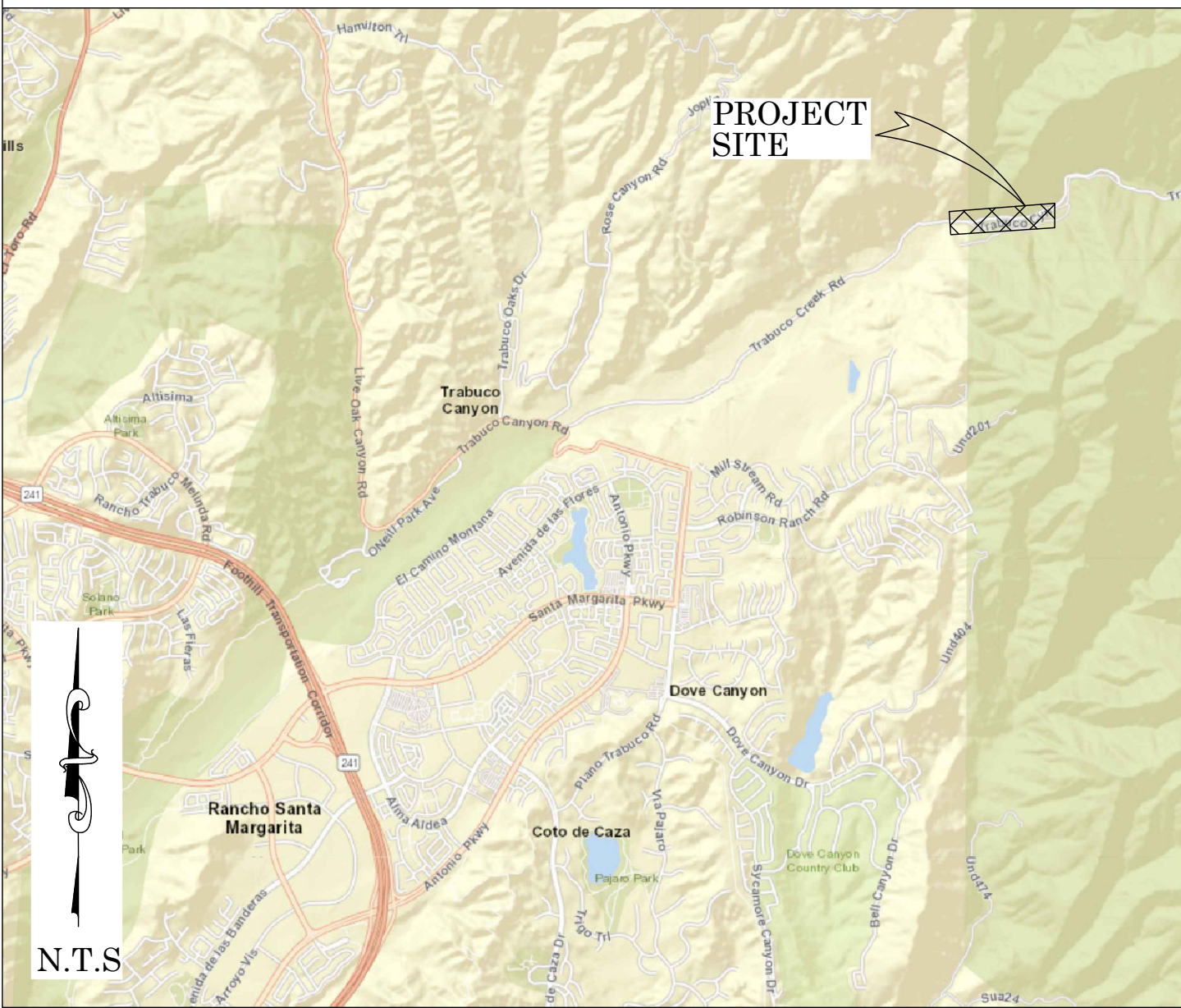




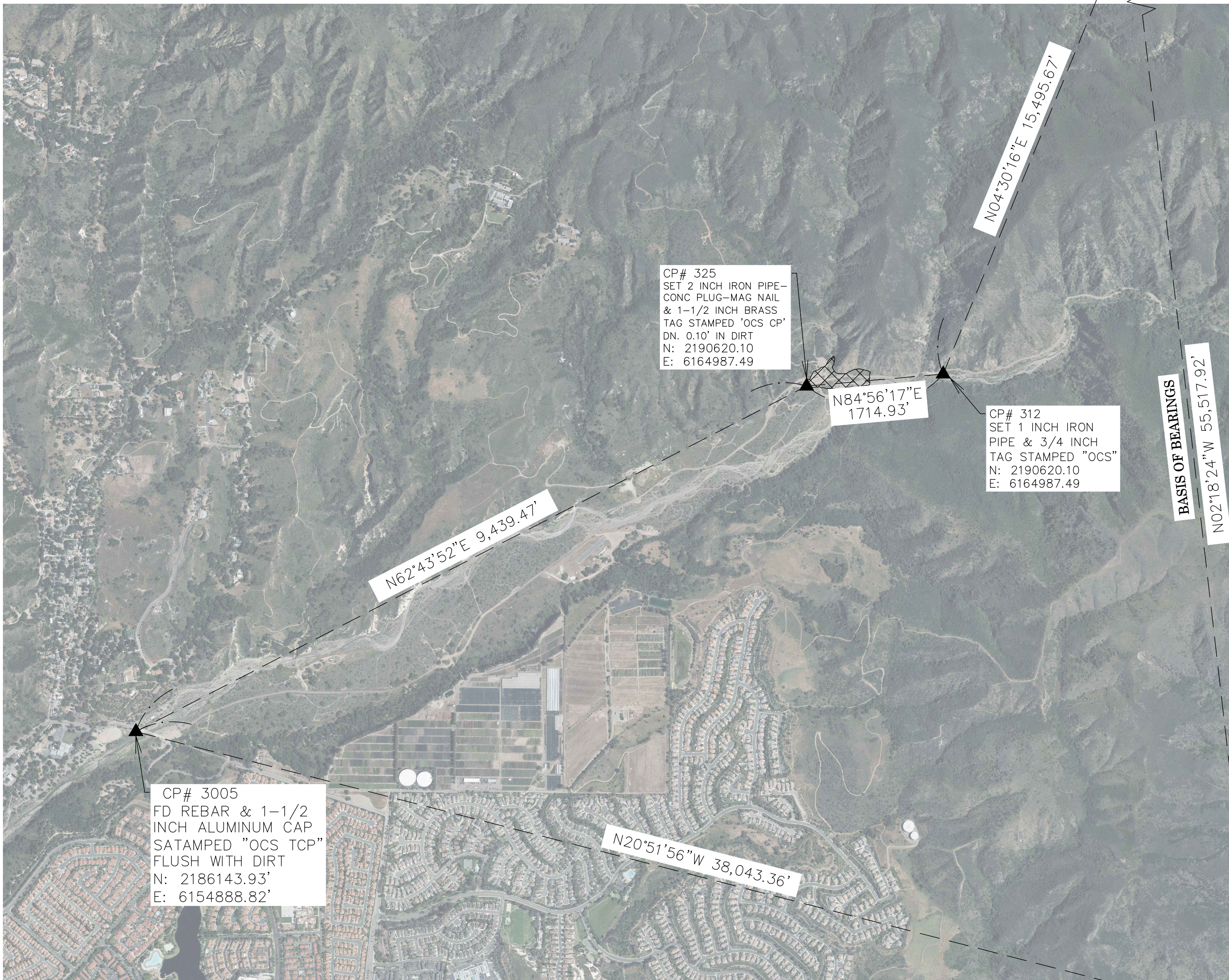
OC PUBLIC WORKS DEPARTMENT
JAMES TREADAWAY, DIRECTOR OF PUBLIC WORKS
KEVIN HILLS, COUNTY SURVEYOR
TRABUCO CREEK ROAD



LOCATION MAP



CONCRETE CROSSING



FOUND CGPS "MJPK"
N: 2206067.91
E: 6166204.47
THIS IS A CONTINUOUS GPS STATION
(CGPS) AND IS PART OF THE CALIFORNIA
SPATIAL REFERENCE NETWORK (CSRN),
FROM WHICH DATA CAN BE DOWNLOADED
HERE: [HTTP://SOPACC SRC.UCSD.EDU/](http://sopaccsrc.ucsd.edu/).

BASIS OF BEARINGS

THE BASIS OF BEARINGS FOR THIS SURVEY IS BASED ON THE CALIFORNIA COORDINATE SYSTEM (CCS83), ZONE VI, NAD 83, OCS (2017.50) EPOCH ADJUSTMENT, AS DETERMINED LOCALLY BY A LINE BETWEEN CONTINUOUS GLOBAL POSITIONING STATIONS CGPS STATIONS (P471) AND (MJPK) BEING NORTH 02°18'24" WEST AS DERIVED FROM THE COORDINATES PUBLISHED BY THE CALIFORNIA SPATIAL REFERENCE CENTER (CSRC) ALONG WITH DATA SHEETS ON FILE IN THE OFFICE OF THE ORANGE COUNTY SURVEYOR.

HORIZONTAL DATUM

COORDINATES SHOWN ARE BASED ON THE CALIFORNIA COORDINATE SYSTEM (CCS83), ZONE VI, NAD 83, OCS (2017.50) EPOCH ADJUSTMENT.

ALL DISTANCES SHOWN ARE GRID, UNLESS OTHERWISE NOTED. TO OBTAIN GROUND DISTANCES MULTIPLY GRID BY A COMBINED FACTOR OF 1.00007820.

THIS COMBINATION FACTOR WAS DERIVED BY HOLDING THE AVERAGE BETWEEN POINT #3005 N:2186143.93 E:6154888.82' EL: 1014.28', AND POINT #312 N:2190620.10' E:6164987.49' ELEVATION= 1003.88'

VERTICAL DATUM

O.C.S. BM. 3WW-13-70 ELEV. = 1024.565' YEAR LEVELED: 1990

NAVD 1988 (O.C.S. 1995 ADJUSTMENT)

DESCRIPTION: FOUND 3 3/4" OCS ALUMINUM BENCHMARK DISK STAMPED "3WW-13-70", SET IN THE TOP OF A 6 IN. BY 6 IN. CONCRETE POST. MONUMENT IS LOCATED ALONG THE SOUTHERLY SIDE OF TRABUCO CREEK, 0.5 MILES SOUTHEASTERLY ALONG TRABUCO CANYON ROAD FROM THE TRABUCO FIRE STATION TO THE INTERSECTION OF TRABUCO CANYON ROAD AND ITS CROSSING OF TRABUCO CREEK, PROCEED 0.15 MILES NORTHEASTERLY ALONG DIRT ROAD ON SOUTHERLY SIDE OF CREEK TO WHERE A SET OF POWER LINES CROSSES SAID DIRT ROAD, 85 FT. SOUTHERLY OF THE CENTERLINE OF THE SAID DIRT ROAD AND 4 FT. SOUTHWESTERLY OF A POWER POST. MONUMENT IS SET LEVEL WITH THE GROUND.

NOTES

THE SURVEY INFORMATION SHOWN HEREON IS TO BE USED FOR TOPOGRAPHIC RELATIONSHIPS ONLY AND IS NOT INTENDED FOR LAND ACQUISITION OR BOUNDARY PURPOSES. PARCELS SHOWN WITHOUT BEARING AND DISTANCES ARE FOR GRAPHICAL PURPOSES. THE CONVENTIONAL SURVEY WAS ESTABLISHED FROM THE CONTROL NETWORK. HOWEVER, THE ALIGNMENT SHOWN HEREON IS COMPILED FROM RECORD DATA AND IS PENDING RESOLUTION OF A FINAL BOUNDARY SHEET.

SHEET INDEX

SHEET	NO.	DESCRIPTION
SHEET 1	TITLE SHEET	
SHEET 2	TOPOGRAPHIC MAP	

PURPOSE OF SURVEY

THE PURPOSE OF THE SURVEY IS TO PROVIDE A TOPOGRAPHIC SURVEY FOR THIS PORTION OF TRABUCO CREEK ROAD.

BASIS OF STATIONING

THE BASIS FOR STATIONING IS STA 10+00 STARTING AT CENTERLINE INTERSECTION OF TRABUCO CANYON ROAD AND TRABUCO CREEK ROAD USING A RECORD ALIGNMENT PER COUNTY OF ORANGE RIGHT OF WAY MAP "TRABUCO CREEK ROAD Z99683 DATED JAN, 2011".

SENIOR LAND SURVEYOR'S CERTIFICATE:

THIS MAP CORRECTLY REPRESENTS A SURVEY MADE BY ME OR UNDER MY DIRECTION IN CONFORMANCE WITH REQUIREMENTS OF THE PROFESSIONAL LAND SURVEYOR'S ACT; THIS 29TH DAY OF JUNE, 2021.

ELLIOTT MEDINA, PLS. SENIOR LAND SURVEYOR



DEPUTY COUNTY SURVEYOR'S STATEMENT:

THIS MAP HAS BEEN EXAMINED IN ACCORDANCE WITH THE PROFESSIONAL LAND SURVEYOR'S ACT; THIS 29TH DAY OF JUNE, 2021.

WADE WEAVER, PLS. DEPUTY COUNTY SURVEYOR



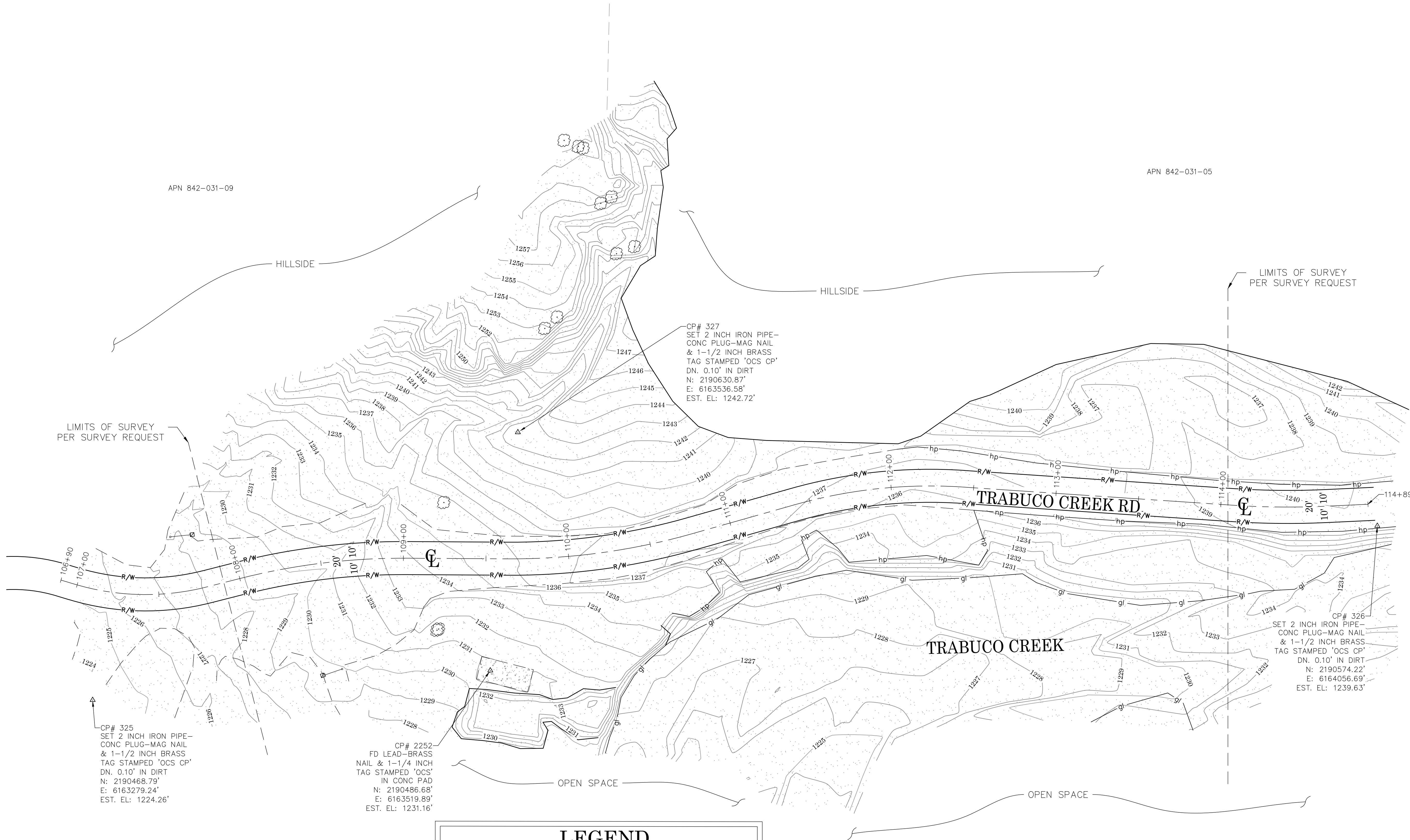
U.S. Survey
Foot

OC Public Works
OC Survey/Field Services
Boundary Analysis & Mapping

TOPOGRAPHIC MAPPING PROJECT

FOUND CGPS "P471"
N: 2150595.47
E: 6168438.89
THIS IS A CONTINUOUS GPS STATION
(CGPS) AND IS PART OF THE CALIFORNIA
SPATIAL REFERENCE NETWORK (CSRN),
FROM WHICH DATA CAN BE DOWNLOADED
HERE: [HTTP://SOPACC SRC.UCSD.EDU/](http://sopaccsrc.ucsd.edu/).

COUNTY OF ORANGE OC PUBLIC WORKS OC SURVEY/FIELD SERVICES/BOUNDARY ANALYSIS & MAPPING			
TRABUCO CREEK ROAD CONCRETE CROSSING			
TITLE SHEET			
PROJECT LIMITS: APPROXIMATE 600 FEET ALONG TRABUCO CREEK ROAD, FROM STATION 108+00 TO STA 114+00.			
DATE OF SURVEY: 03/15/2021	BY: R. MACIAS, PLS & CREW	SHEET NO. 1 of 4	
MAPPING	BY: L. ISLAS		
OFFICE CHECK	BY: E. MEDINA, PLS	FILE # 2021PW-ENG0002	
FIELD CHECK	BY: R. MACIAS, PLS		
SCALE: N.T.S.	W.O. # ER19300	FILE: TRABUCO CREEK ROAD_TOPO_2021.DWG	
MARK	DATE	ITEM	REVISIONS



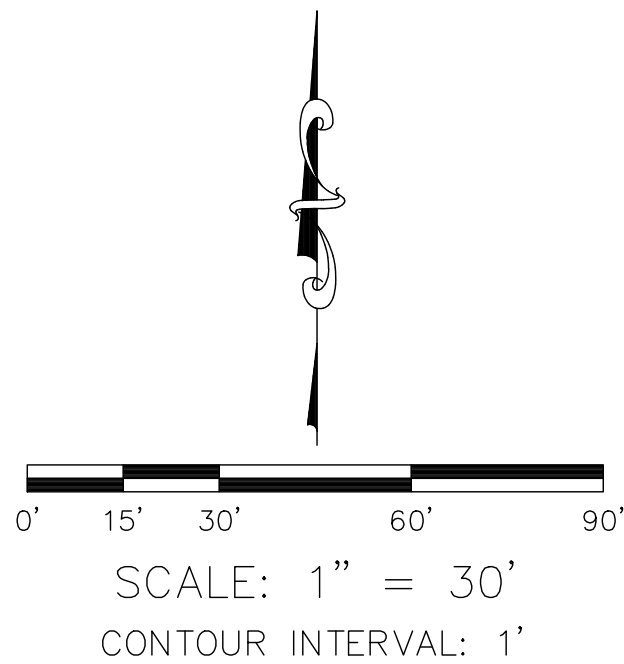
LIMITS OF SURVEY
PER SURVEY REQUEST

LIMITS OF SURVEY
PER SURVEY REQUEST

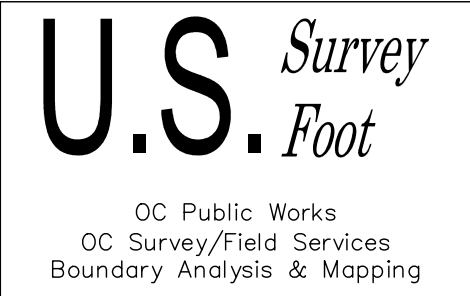
LEGEND

SYMBOL		AREA PATTERN KEY	
	Control Point		Concrete
	Gate, Single		Dirt
	Post		
	Tree		
LINE PATTERN KEY		ABBREVIATION	
	Edge of Road Dirt	CL	Centerline
	Grade Line	CONC	Concrete
	Hinge Point	CP	Control Point
	Right of Way	DN	Down
	Toe of Dirt	EL	Elevation
		EST	Established
		FD	Found

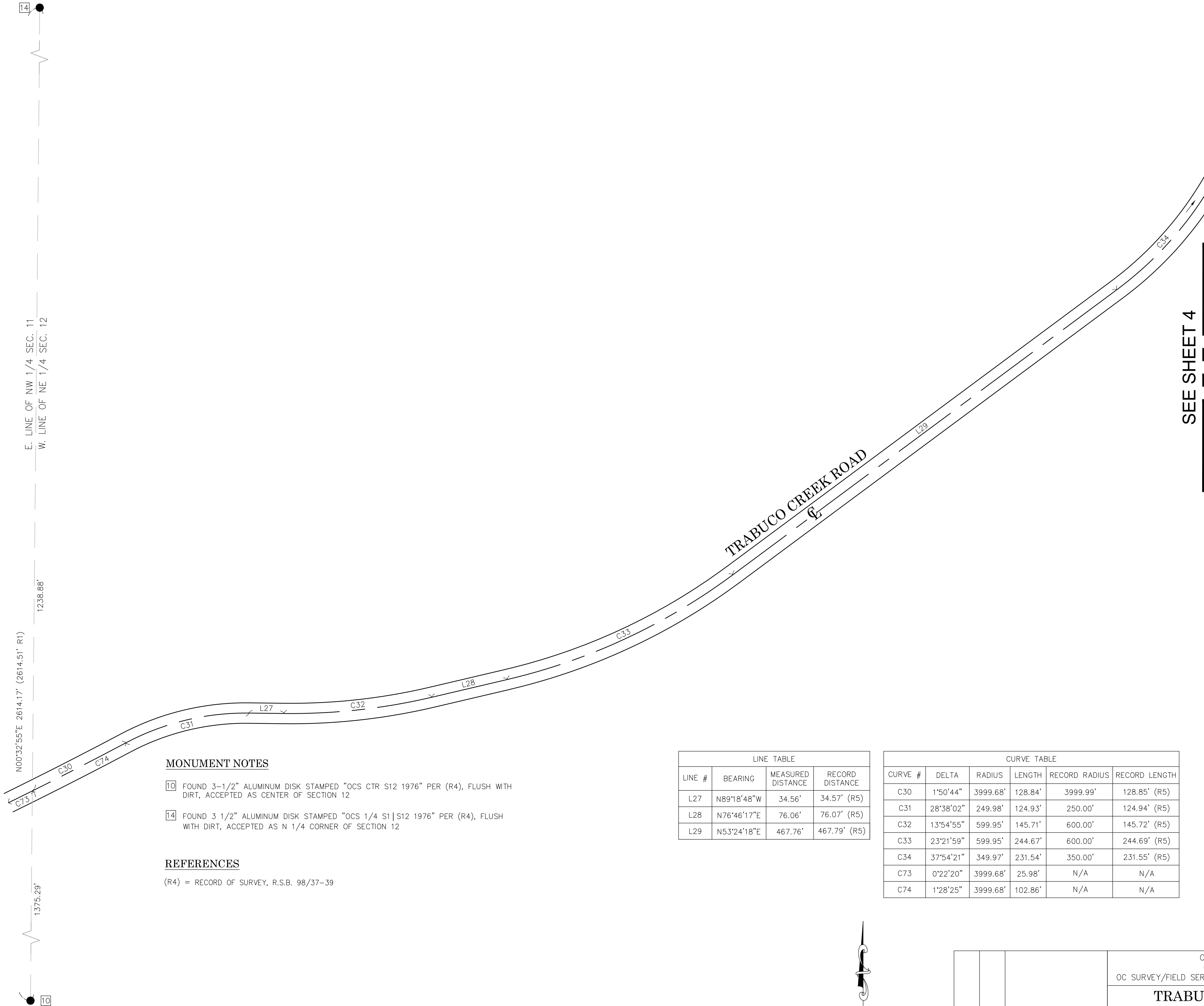
NOTE:
THE ALIGNMENT SHOWN HEREON IS COMPILED FROM RECORD DATA AND IS
PENDING RESOLUTION OF A FINAL BOUNDARY SHEET.



SCALE: 1" = 30'
CONTOUR INTERVAL: 1'



			COUNTY OF ORANGE OC PUBLIC WORKS OC SURVEY/FIELD SERVICES/BOUNDARY ANALYSIS & MAPPING			
			TRABUCO CREEK ROAD CONCRETE CROSSING			
			TOPOGRAPHIC MAP			
			PROJECT LIMITS: APPROXIMATE 600 FEET ALONG TRABUCO CREEK ROAD, FROM STATION 108+00 TO STA 114+00.			
			DATE OF SURVEY:03/15/2021		BY:R. MACIAS, PLS & CREW	SHEET NO. 2 of 4
			MAPPING			
			OFFICE CHECK			
			FIELD CHECK			
			SCALE:1"=30'		W.O. #ER19300	
			MARK	DATE	ITEM	FILE: TRABUCO CREEK ROAD_TOPO_2021.DWG
REVISIONS						



MONUMENT NOTES

- 10

FOUND 3-1/2" ALUMINUM DISK STAMPED "OCS CTR S12 1976" PER (R4), FLUSH WITH DIRT, ACCEPTED AS CENTER OF SECTION 12
- 14

FOUND 3 1/2" ALUMINUM DISK STAMPED "OCS 1/4 S1|S12 1976" PER (R4), FLUSH WITH DIRT, ACCEPTED AS N 1/4 CORNER OF SECTION 12

REFERENCES

(R4) = RECORD OF SURVEY, R.S.B. 98/37-39

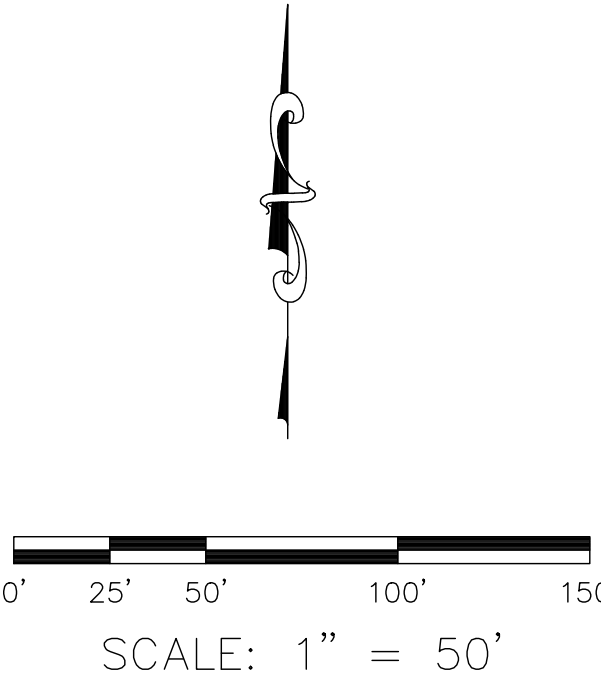
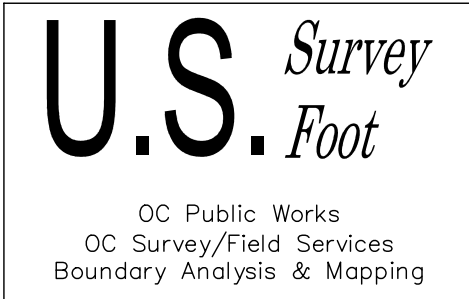
LINE TABLE			
LINE #	BEARING	MEASURED DISTANCE	RECORD DISTANCE
L27	N89°18'48"W	34.56'	34.57' (R5)
L28	N76°46'17"E	76.06'	76.07' (R5)
L29	N53°24'18"E	467.76'	467.79' (R5)

CURVE TABLE				
CURVE #	DELTA	RADIUS	LENGTH	RECORD RADIUS
C30	1°50'44"	3999.68'	128.84'	3999.99'
C31	28°38'02"	249.98'	124.93'	250.00'
C32	13°54'55"	599.95'	145.71'	600.00'
C33	23°21'59"	599.95'	244.67'	600.00'
C34	37°54'21"	349.97'	231.54'	350.00'
C73	0°22'20"	3999.68'	25.98'	N/A
C74	1°28'25"	3999.68'	102.86'	N/A

NOTE:
THE ALIGNMENT SHOWN HEREON IS COMPILED FROM RECORD DATA
AND IS PENDING RESOLUTION OF A FINAL BOUNDARY SHEET.

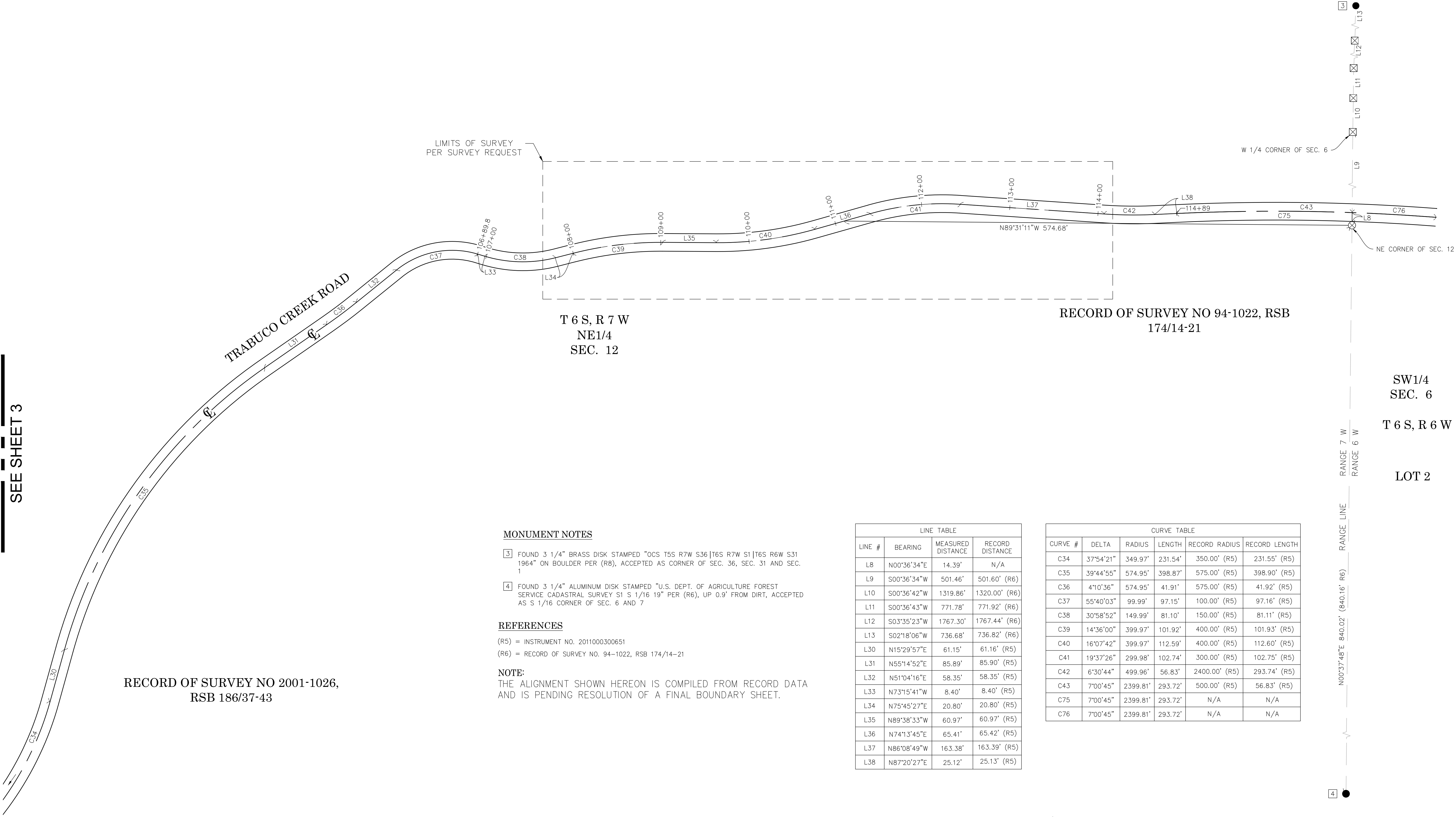
LEGEND

- SEARCHED NOT FOUND
- FOUND MONUMENT AS NOTED



			COUNTY OF ORANGE OC PUBLIC WORKS OC SURVEY/FIELD SERVICES/BOUNDARY ANALYSIS & MAPPING						
			TRABUCO CREEK ROAD CONCRETE CROSSING						
			ALIGNMENT						
			PROJECT LIMITS: APPROXIMATE 600 FEET ALONG TRABUCO CREEK ROAD, FROM STATION						
			DATE OF SURVEY: 03/15/2021		BY: R. MACIAS, PLS & CREW	SHEET NO. 3 of 4			
			MAPPING		BY: I. ISLAS				
			OFFICE CHECK		BY: E. MEDINA, PLS				
			FIELD CHECK		BY: R. MACIAS, PLS				
			MARK	DATE	ITEM	SCALE: 1"=50'		W.O. #ER19300	FILE # 2021PW-ENG0002
			REVISIONS			FILE: TRABUCO CREEK ROAD TOPO ALIGNMENT_TOPO_2021.DWG			

SEE SHEET 3



RECORD OF SURVEY NO 2001-1026,
RSB 186/37-43

MONUMENT NOTES

- [3] FOUND 3 1/4" BRASS DISK STAMPED "OCS T5S R7W S36|T6S R7W S1|T6S R6W S31 1964" ON BOULDER PER (R8), ACCEPTED AS CORNER OF SEC. 36, SEC. 31 AND SEC. 1
- [4] FOUND 3 1/4" ALUMINUM DISK STAMPED "U.S. DEPT. OF AGRICULTURE FOREST SERVICE CADASTRAL SURVEY S1 S 1/16 19" PER (R6), UP 0.9' FROM DIRT, ACCEPTED AS S 1/16 CORNER OF SEC. 6 AND 7

REFERENCES

(R5) = INSTRUMENT NO. 2011000300651
(R6) = RECORD OF SURVEY NO. 94-1022, RSB 174/14-21

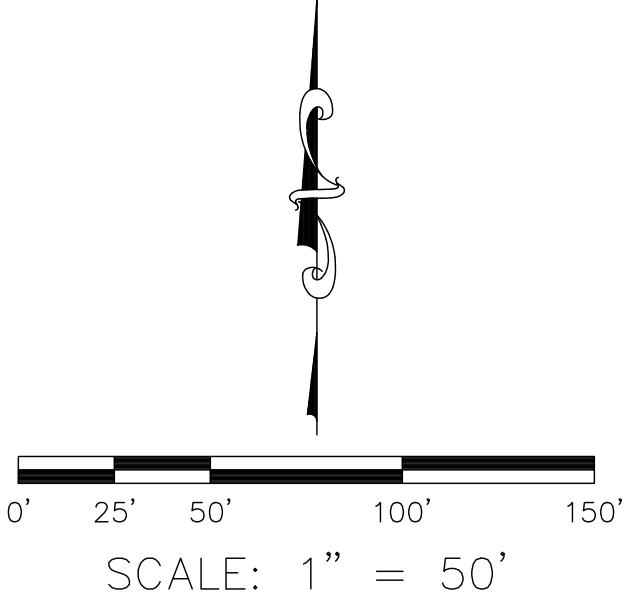
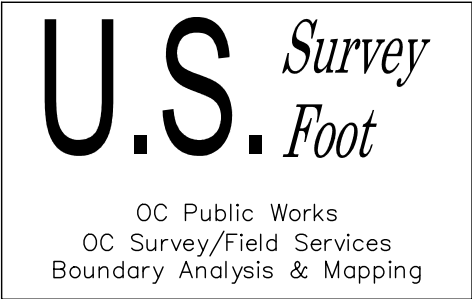
NOTE:
THE ALIGNMENT SHOWN HEREON IS COMPILED FROM RECORD DATA AND IS PENDING RESOLUTION OF A FINAL BOUNDARY SHEET.

LEGEND

- ⊗ SEARCHED NOT FOUND
⊠ NOT SEARCHED DUE TO RUGGED TERRAIN OR AS NOTED
● FOUND MONUMENT AS NOTED

LINE TABLE			
LINE #	BEARING	MEASURED DISTANCE	RECORD DISTANCE
L8	N00°36'34"E	14.39'	N/A
L9	S00°36'34"W	501.46'	501.60' (R6)
L10	S00°36'42"W	1319.86'	1320.00' (R6)
L11	S00°36'43"W	771.78'	771.92' (R6)
L12	S03°35'23"W	1767.30'	1767.44' (R6)
L13	S02°18'06"W	736.68'	736.82' (R6)
L30	N15°29'57"E	61.15'	61.16' (R5)
L31	N55°14'52"E	85.89'	85.90' (R5)
L32	N51°04'16"E	58.35'	58.35' (R5)
L33	N73°15'41"W	8.40'	8.40' (R5)
L34	N75°45'27"E	20.80'	20.80' (R5)
L35	N89°38'33"W	60.97'	60.97' (R5)
L36	N74°13'45"E	65.41'	65.42' (R5)
L37	N86°08'49"W	163.38'	163.39' (R5)
L38	N87°20'27"E	25.12'	25.13' (R5)

CURVE TABLE					
CURVE #	DELTA	RADIUS	LENGTH	RECORD RADIUS	RECORD LENGTH
C34	37°54'21"	349.97'	231.54'	350.00' (R5)	231.55' (R5)
C35	39°44'55"	574.95'	398.87'	575.00' (R5)	398.90' (R5)
C36	41°0'36"	574.95'	41.91'	575.00' (R5)	41.92' (R5)
C37	55°40'03"	99.99'	97.15'	100.00' (R5)	97.16' (R5)
C38	30°58'52"	149.99'	81.10'	150.00' (R5)	81.11' (R5)
C39	14°36'00"	399.97'	101.92'	400.00' (R5)	101.93' (R5)
C40	16°07'42"	399.97'	112.59'	400.00' (R5)	112.60' (R5)
C41	19°37'26"	299.98'	102.74'	300.00' (R5)	102.75' (R5)
C42	6°30'44"	499.96'	56.83'	2400.00' (R5)	293.74' (R5)
C43	7°00'45"	2399.81'	293.72'	500.00' (R5)	56.83' (R5)
C75	7°00'45"	2399.81'	293.72'	N/A	N/A
C76	7°00'45"	2399.81'	293.72'	N/A	N/A



			COUNTY OF ORANGE OC PUBLIC WORKS OC SURVEY/FIELD SERVICES/BOUNDARY ANALYSIS & MAPPING				
			TRABUCO CREEK ROAD CONCRETE CROSSING				
			BOUNDARY MAP				
			PROJECT LIMITS: APPROXIMATE 600 FEET ALONG TRABUCO CREEK ROAD, FROM STATION				
			DATE OF SURVEY:03/15/2021		BY:R. MACIAS, PLS & CREW		SHEET NO. 4 of 4
			MAPPING		BY:I. ISLAS		
			OFFICE CHECK		BY:E. MEDINA, PLS		
			FIELD CHECK		BY:R. MACIAS, PLS		
			SCALE:1" = XX'		W.O. #ER19300		
			REVISIONS		FILE #2021PW-ENG0002		
		FILE: TRABUCO CREEK ROAD TOPO ALIGNMENT_TOPO_2021.DWG					