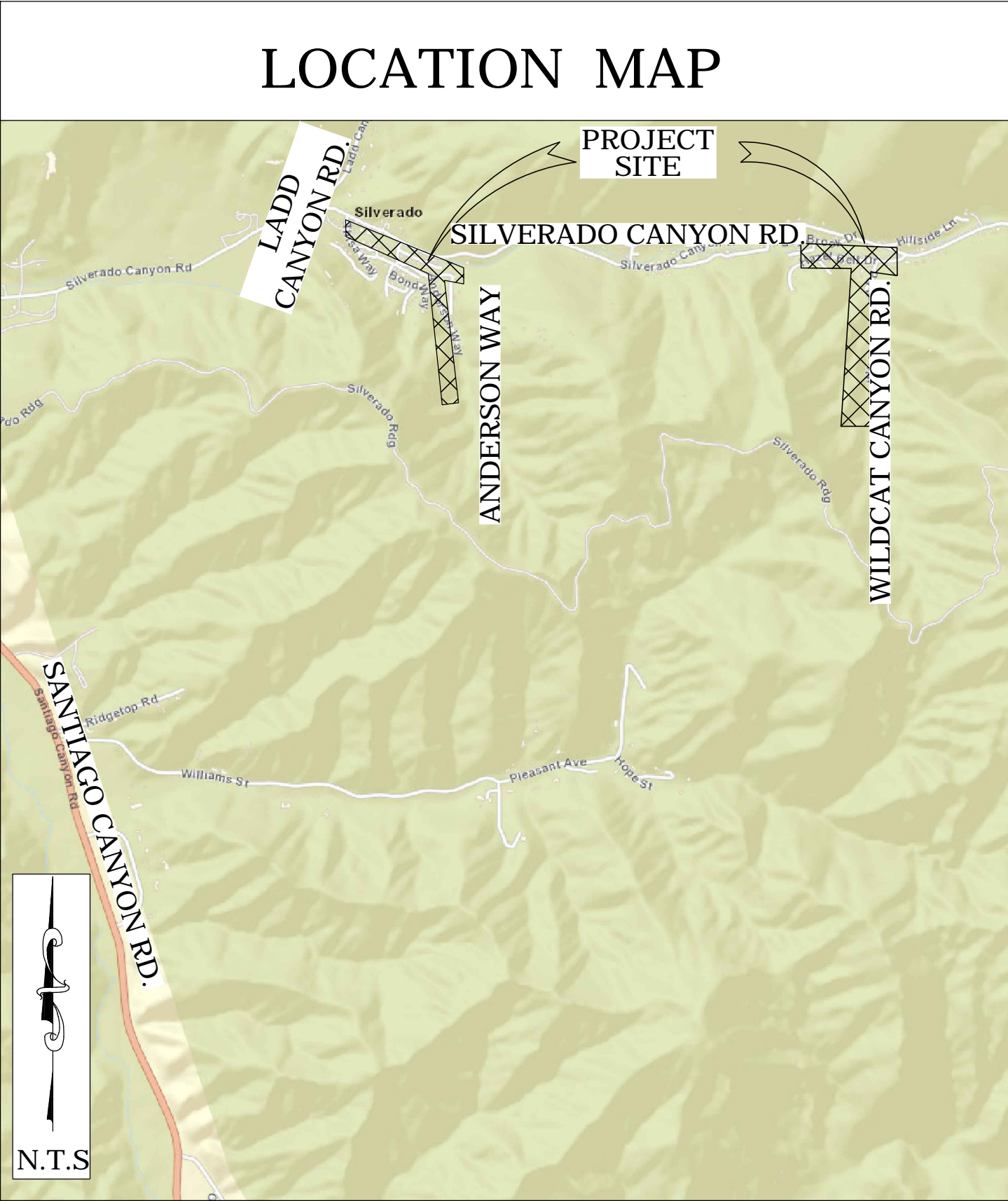




OC PUBLIC WORKS DEPARTMENT
JAMES TREADAWAY, DIRECTOR OF PUBLIC WORKS
KEVIN HILLS, COUNTY SURVEYOR
SILVERADO CANYON DEBRIS REMOVAL

N.R.C.S.



BASIS OF BEARINGS

THE BASIS OF BEARINGS FOR THIS SURVEY IS BASED ON THE CALIFORNIA COORDINATE SYSTEM (CCS83), ZONE VI, NAD 83, OCS (2017.50) EPOCH ADJUSTMENT, AS DETERMINED LOCALLY BY A LINE BETWEEN CONTINUOUS GLOBAL POSITIONING STATIONS CGPS STATIONS (MJP) AND (OEOC) BEING NORTH 71°36'55" WEST AS DERIVED FROM THE COORDINATES PUBLISHED BY THE CALIFORNIA SPATIAL REFERENCE CENTER (CSRC) ALONG WITH DATA SHEETS ON FILE IN THE OFFICE OF THE ORANGE COUNTY SURVEYOR.

HORIZONTAL DATUM

COORDINATES SHOWN ARE BASED ON THE CALIFORNIA COORDINATE SYSTEM (CCS83), ZONE VI, NAD 83, OCS (2017.50) EPOCH ADJUSTMENT.

ALL DISTANCES SHOWN ARE GRID, UNLESS OTHERWISE NOTED. TO OBTAIN GROUND DISTANCES MULTIPLY GRID BY A COMBINED FACTOR OF 1.00007642. THIS COMBINATION FACTOR WAS AVERAGED BETWEEN:

CP# 603
N: 2217933.23' E: 6140341.81' EL: 1207.43'
CP# 620
N: 2217955.04' E: 6145245.79' EL: 1365.45'

ALL DISTANCES ARE BASED ON THE U.S. SURVEY FOOT.

VERTICAL DATUM

O.C.S. BM. 3V-4-80 ELEV. = 1181.444' YEAR LEVELED: 1992

NAVD 1988 (O.C.S. 1995 ADJUSTMENT)

DESCRIPTION: FOUND 3 3/4" OCS ALUMINUM BENCHMARK DISK STAMPED "3V-4-80", SET IN THE EASTERLY END OF THE NORTHERLY WHEEL RAIL FOR BRIDGE #SV-8. MONUMENT IS LOCATED ALONG THE NORTHERLY SIDE OF SILVERADO CANYON ROAD, 2.0 MILES EASTERLY OF THE CENTERLINE OF BLACK STAR CANYON ROAD AND 16.5 FT. NORTHERLY OF THE CENTERLINE OF SILVERADO CANYON ROAD. MONUMENT IS SET LEVEL WITH THE BRIDGE DECK.

NOTES

THE EXISTING SURFACE 2022 WAS DERIVED BY USING TERRESTRIAL AND AERIAL LIDAR SCANNING. A 2 FOOT CONTOUR SURFACE WAS DERIVED FROM A 2018 USGS LIDAR DATASET (BASE SURFACE). THE FOOT PRINT OF THE HOUSES WHICH ARE SURROUNDING THE CREEK BEDS ARE EXCLUDED FROM THE EXISTING SURFACE AND VOLUME REPORT.

THE CONSTRUCTION ALIGNMENTS SHOWN HEREON ARE DERIVED BY HOLDING THE APPROXIMATED FLOWLINE FROM THE BASELINE SURFACE AND ARE TO BE USED FOR THIS PROJECT ONLY.

SHEET INDEX		
SHEET	NO.	DESCRIPTION
SHEET 1		TITLE SHEET
SHEET 2-3		ALIGNMENT SHEET

BASIS OF STATIONING

THE BASIS FOR STATIONING ARE ASSUMED, ANDERSON CREEK = 10+00, SILVERADO CREEK AREA #1 = 40+00, WILDCAT CREEK = 60+00, AND SILVERADO CREEK AREA #2 = 80+00, AND TO BE USED FOR CONSTRUCTION PURPOSES ONLY.

PURPOSE OF SURVEY

THE PURPOSE OF THE SURVEY IS TO PROVIDE A VOLUMES REPORT THAT ESTIMATES THE AMOUNT OF DEBRIS FOR REMOVAL PURPOSES.

SENIOR LAND SURVEYOR'S CERTIFICATE:

THIS MAP CORRECTLY REPRESENTS A SURVEY MADE BY ME OR UNDER MY DIRECTION IN CONFORMANCE WITH REQUIREMENTS OF THE PROFESSIONAL LAND SURVEYOR'S ACT; THIS 29 DAY OF MARCH, 2022.

ELLIOTT MEDINA, PLS. SENIOR LAND SURVEYOR

DEPUTY COUNTY SURVEYOR'S STATEMENT:

THIS MAP HAS BEEN EXAMINED IN ACCORDANCE WITH THE PROFESSIONAL LAND SURVEYOR'S ACT; THIS 29 DAY OF MARCH, 2022.

WADE WEAVER, PLS. DEPUTY COUNTY SURVEYOR



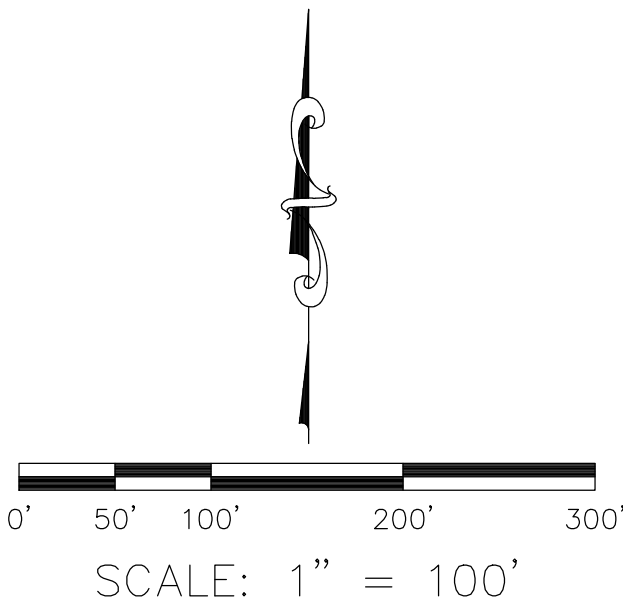
VOLUMES QUANTITIES PROJECT

FOUND CGPS "MJP"
N: 2206067.91
E: 6166204.47
THIS IS A CONTINUOUS GPS STATION (CGPS) AND IS PART OF THE CALIFORNIA SPATIAL REFERENCE NETWORK (CSRN), FROM WHICH DATA CAN BE DOWNLOADED HERE: [HTTP://SOPACC SRC.UCSD.EDU/](http://sopaccsrc.ucsd.edu/).

MARK		DATE	ITEM	COUNTY OF ORANGE OC PUBLIC WORKS OC SURVEY/FIELD SERVICES/BOUNDARY ANALYSIS & MAPPING				
				SILVERADO CANYON DEBRIS REMOVAL N.R.C.S.				
				TITLE SHEET				
				DATE OF SURVEY: 03/8/2022		BY: P. MAGUIRE & CREW		SHEET NO. 1 of 3
				MAPPING		BY: R. BELTRAN		
				OFFICE CHECK		BY: M. LAFONTAINE, PLS		
FIELD CHECK		BY: E. MEDINA, PLS						
SCALE: N.T.S.		W.O. #ER19300		FILE #2122PW-OP0003				
FILE: SILVERADO DEBRIS REMOVAL-ALIGNMENT_2022.DWG								
REVISIONS								



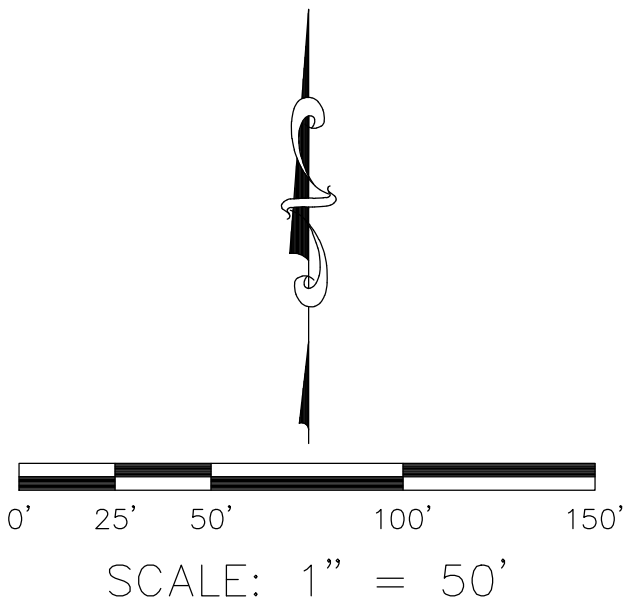
ALIGNMENT NOTE
THE CONSTRUCTION ALIGNMENTS SHOWN HEREON ARE DERIVED BY HOLDING THE APPROXIMATED FLOWLINE FROM THE BASELINE SURFACE AND ARE TO BE USED FOR THIS PROJECT ONLY.



				COUNTY OF ORANGE OC PUBLIC WORKS OC SURVEY/FIELD SERVICES/BOUNDARY ANALYSIS & MAPPING		
				SILVERADO CANYON DEBRIS REMOVAL N.R.C.S.		
				CONSTRUCTION ALIGNMENT		
MARK	DATE			DATE OF SURVEY:03/8/2022	BY:P. MAGUIRE & CREW	SHEET NO. 2 of 3
				MAPPING	BY:R. BELTRAN	
				OFFICE CHECK	BY:M. LAFONTAINE, PLS	
				FIELD CHECK	BY:E. MEDINA, PLS	
				SCALE:1"=100'	W.O. #ER19300	
		REVISIONS		FILE:SILVERADO DEBRIS REMOVAL_ALIGN_2022.DWG		



ALIGNMENT NOTE
THE CONSTRUCTION ALIGNMENTS SHOWN HEREON ARE DERIVED BY HOLDING THE APPROXIMATED FLOWLINE FROM THE BASELINE SURFACE AND ARE TO BE USED FOR THIS PROJECT ONLY.



			COUNTY OF ORANGE OC PUBLIC WORKS OC SURVEY/FIELD SERVICES/BOUNDARY ANALYSIS & MAPPING			
			SILVERADO CANYON DEBRIS REMOVAL N.R.C.S.			
			CONSTRUCTION ALIGNMENT			
			DATE OF SURVEY:03/8/2022		BY:P. MAGUIRE & CREW	
MAPPING		BY:R. BELTRAN				
OFFICE CHECK		BY:M. LAFONTAINE, PLS				
FIELD CHECK		BY:E. MEDINA, PLS				
SCALE:1"=50'		W.O. #ER19300		FILE #2122PW-OP0003		
MARK		DATE	ITEM		FILE:SILVERADO DEBRIS REMOVAL_ALIGNMENT_2022.DWG	
		REVISIONS				