



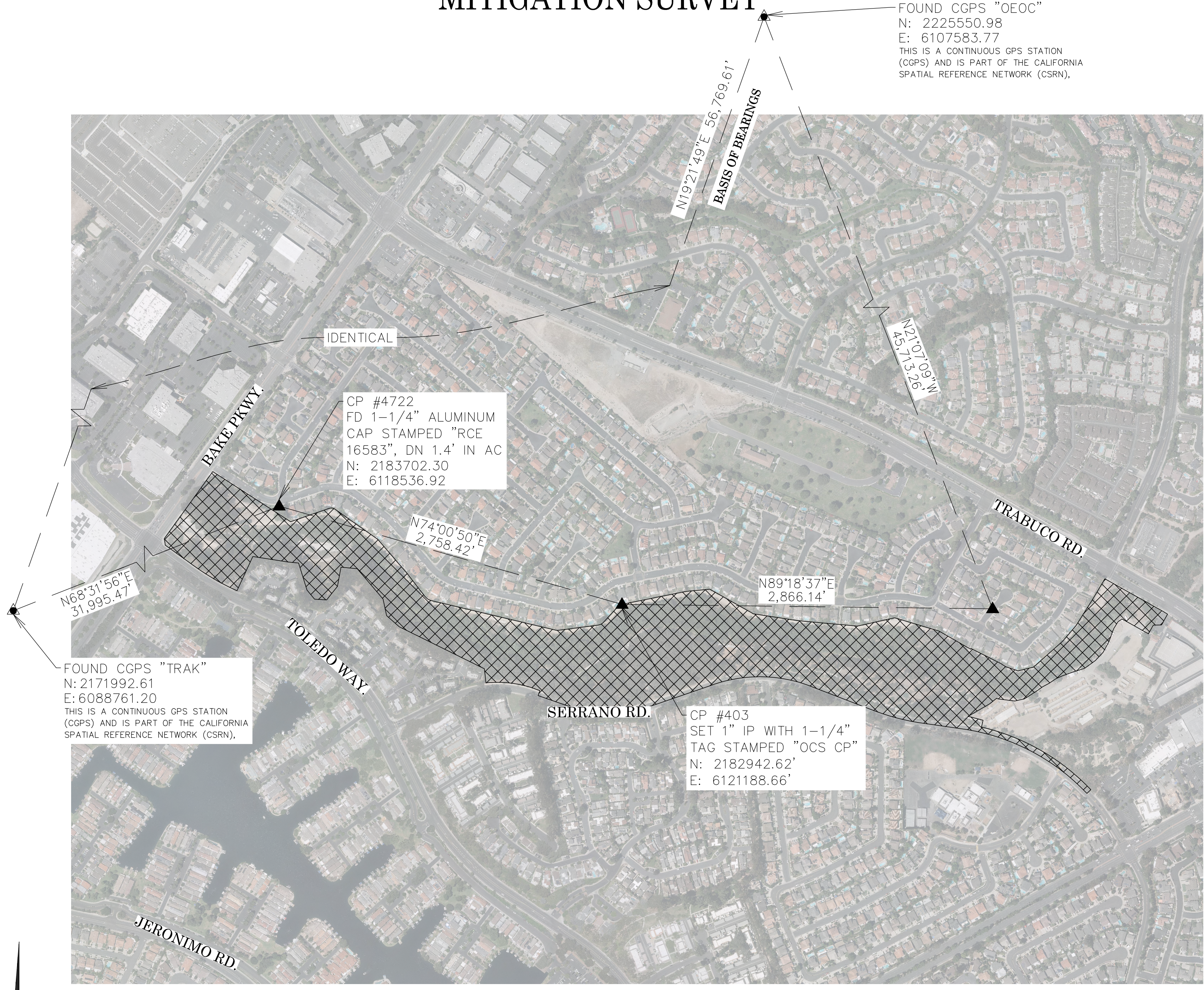
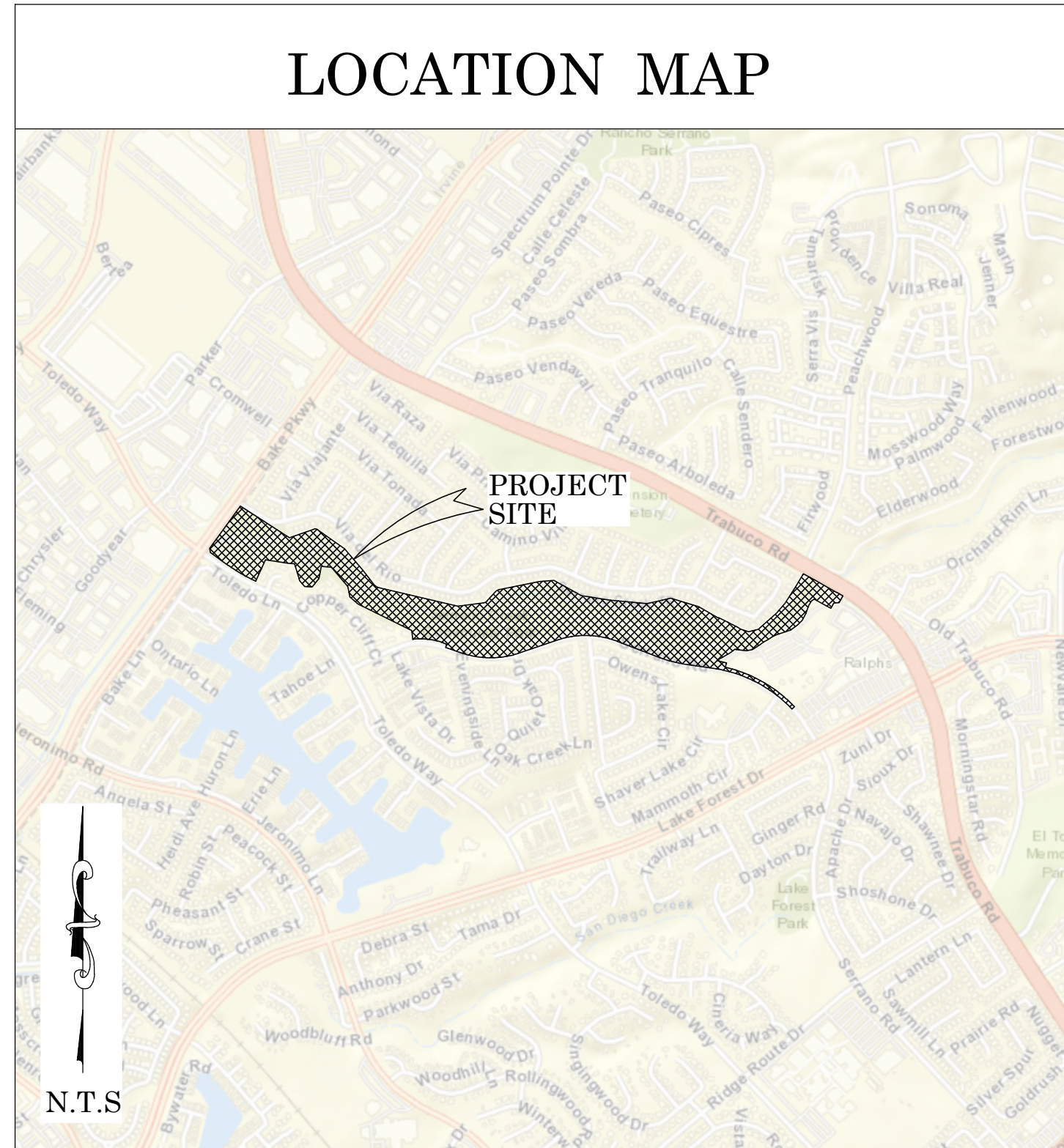
# OC PUBLIC WORKS DEPARTMENT

## KEVIN ONUMA, DIRECTOR OF PUBLIC WORKS

### LILY SANBERG, COUNTY SURVEYOR

# SERRANO CREEK (F19)

## MITIGATION SURVEY



#### BASIS OF BEARINGS

THE BASIS OF BEARINGS FOR THIS SURVEY IS BASED ON THE CALIFORNIA COORDINATE SYSTEM (CCS83), ZONE VI, NAD 83, OCS (2017.50) EPOCH ADJUSTMENT, AS DETERMINED LOCALLY BY A LINE BETWEEN CONTINUOUS GLOBAL POSITIONING STATIONS CGPS STATIONS (TRAK) AND (OEOC) BEING NORTH 19°21'49" EAST AS DERIVED FROM THE COORDINATES PUBLISHED BY THE CALIFORNIA SPATIAL REFERENCE CENTER (CSRC) ALONG WITH DATA SHEETS ON FILE IN THE OFFICE OF THE ORANGE COUNTY SURVEYOR.

#### HORIZONTAL DATUM

COORDINATES SHOWN ARE BASED ON THE CALIFORNIA COORDINATE SYSTEM (CCS83), ZONE VI, NAD 83, OCS (2017.50) EPOCH ADJUSTMENT.

ALL DISTANCES SHOWN ARE GRID, UNLESS OTHERWISE NOTED. TO OBTAIN GROUND DISTANCES MULTIPLY GRID BY A COMBINED FACTOR OF 1.00004467.

THIS COMBINATION FACTOR WAS HELD AT: CP# 403  
N: 2182942.62' E: 6121188.66' EL: 403.07'

#### VERTICAL DATUM

NAVD 88

BENCHMARK: CALIFORNIA SPATIAL REFERENCE SYSTEM (CSRS) CONTINUOUSLY OPERATING GLOBAL POSITIONING STATION (CGPS) "OEOC"

ELEVATION (ORTHOMETRIC HEIGHT) 1291.27' 393.581(m)  
USING GEIOD 12B

PER DATA SHEET ON FILE WITH THE CALIFORNIA SPATIAL REFERENCE CENTER (CSRC)

#### BASIS OF STATIONING

THE STATIONING SHOWN WITHIN THE ACCOMPANYING ELECTRONIC FILE IS PER RESTORATION PLAN No. F19-701-6 DATED OCTOBER 2001.

#### PURPOSE OF SURVEY

THE PURPOSE OF THIS SURVEY IS TO PROVIDE A TOPOGRAPHIC MAP, RIGHT OF WAY AND BOUNDARY ESTABLISHMENT AND A CONSTRUCTION ALIGNMENT TO AID IN A STUDY FOR NATIVE VEGETATION COMMUNITY MITIGATION AND ASSOCIATED STORM WATER CONVEYANCE CAPACITY.

#### NOTES

THE TITLE SHEET AND BOUNDARY WAS COMPILED WITH A DIGITAL CIVIL3D AUTOCAD DWG. TOPOGRAPHIC SURVEY. THIS DIGITAL DELIVERABLE CONTAINS A DIGITAL SURFACE MODEL, HISTORIC CONSTRUCTION ALIGNMENT, AND A HIGH RESOLUTION GEO TIFF AERIAL IMAGE.

#### SHEET INDEX

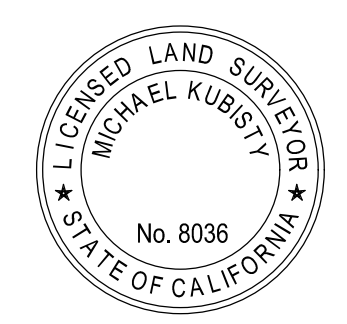
SHEET NO.	DESCRIPTION
1	TITLE SHEET
2-3	BOUNDARY NOTES
4-6	BOUNDARY MAP

#### SENIOR LAND SURVEYOR'S CERTIFICATE:

THIS MAP CORRECTLY REPRESENTS A SURVEY MADE BY ME OR UNDER MY DIRECTION IN CONFORMANCE WITH REQUIREMENTS OF THE PROFESSIONAL LAND SURVEYORS' ACT; THIS 20 DAY OF APRIL, 2026.

*Michael Kubisty*

MICHAEL KUBISTY, PLS. SENIOR LAND SURVEYOR



#### SENIOR LAND SURVEYOR'S CERTIFICATE:

THIS MAP CORRECTLY REPRESENTS A SURVEY MADE BY ME OR UNDER MY DIRECTION IN CONFORMANCE WITH REQUIREMENTS OF THE PROFESSIONAL LAND SURVEYORS' ACT; THIS 20 DAY OF APRIL, 2026.

*Tate Lofgreen*

TATE LOFGREEN, PLS. SENIOR LAND SURVEYOR



COUNTY OF ORANGE OC PUBLIC WORKS OC SURVEY/FIELD SERVICES/BOUNDARY ANALYSIS & MAPPING	
<b>SERRANO CREEK (F19)</b> <b>MITIGATION SURVEY</b>	
BOUNDARY MAP	
PROJECT LIMITS: SERRANO CREEK (F19) UPSTREAM TRABUCO ROAD DOWNSTREAM TO BAKE PKWY.	
DATE OF SURVEY: 01/2022 TO 12/2023	BY: T. LOFGREEN, PLS.
MAPPING	BY: T. LOFGREEN, PLS.
OFFICE CHECK	BY: M. KUBISTY, PLS.
FIELD CHECK	BY: T. LOFGREEN, PLS.
SCALE: N.T.S.	W.O. #
FILE: #2526PW-ER0006	
MARK	DATE
ITEM	REVISIONS
SHEET NO. <b>1</b> of <b>6</b>	

**ESTABLISHMENT NOTES**

- A S.F.N. ESTABLISHED THE CENTERLINE INTERSECTION OF TOLEDO WAY AND BAKE PARKWAY AND ALSO O.C.S. G.P.S. POINT 6729 BY TIES PER R32. SEE DETAIL A, SHEET 3.
- B ESTABLISHED THE CENTERLINE INTERSECTION OF VIA DEL RIO AND BAKE PARKWAY BY TIES PER R21. SEE DETAIL B, SHEET 3. SAID ESTABLISHED POSITION FIT SURROUNDING MONUMENTS WITH A HIGHER ACCURACY THAN THE FOUND CENTERLINE MONUMENT. SEE MON [4].
- C ESTABLISHED THE CENTERLINE OF BAKE PARKWAY BY HOLDING A LINE BETWEEN MONUMENT [1] AND ESTABLISHMENT A.
- D ESTABLISHED O.C.S. G.P.S. POINT 6671 BY HOLDING RECORD CCS83, ZONE VI 2017.50 EPOCH COORDINATES PER R50, USED AS A TIE LINE.
- E S.F.N. ESTABLISHED THE CENTERLINE E.C. OF VIA DEL RIO BY HOLDING RECORD G.P.S. VECTOR TIES PER R22 SEE SHEET 3.
- F ESTABLISHED THE CENTERLINE OF VIA DEL RIO BY HOLDING A LINE BETWEEN ESTABLISHMENTS B AND E.
- G ESTABLISHED THE CENTERLINE OF VIA DEL RIO BY HOLDING A LINE BETWEEN MONUMENTS [5] AND [6].
- H ESTABLISHED THE CENTERLINE OF TRABUCO ROAD BY HOLDING A LINE BETWEEN MONUMENTS [5] AND [8].
- I ESTABLISHED THE CENTERLINE OF OLD TRABUCO ROAD AND ITS NWLY PROLONGATION BY HOLDING A LINE BETWEEN MONUMENTS [9] AND [11].
- J ESTABLISHED THE CENTERLINE INTERSECTION OF OLD TRABUCO ROAD AND VIA DEL RIO BY INTERSECTION OF LINE ESTABLISHMENTS G AND I.
- K ESTABLISHED POINT ON THE CENTERLINE OF OLD TRABUCO ROAD BY HOLDING A RECORD DISTANCE OF 1148.77 FEET PER R11 NWLY FROM MONUMENT [11] ALONG LINE ESTABLISHMENT I.
- L ESTABLISHED THE SE'LY RIGHT OF WAY OF BAKE PARKWAY BY HOLDING A LINE PARALLEL WITH, AND A RECORD DISTANCE OF 60 FEET PER R10 SE'LY FROM LINE ESTABLISHMENT C.
- M ESTABLISHED THE SW'LY RIGHT OF WAY OF TRABUCO ROAD BY HOLDING A LINE PARALLEL WITH, AND A RECORD DISTANCE OF 60 FEET PER R11 SW'LY FROM LINE ESTABLISHMENT C.
- N ESTABLISHED THE SW'LY RIGHT OF WAY OF VIA DEL RIO AND THE N'LY LINE OF PARCEL GA 302-40.01 OF R40 BY HOLDING A LINE PARALLEL WITH, AND A RECORD OF DISTANCE OF 25 FEET PER R10 SW'LY FROM LINE ESTABLISHMENT C.
- O ESTABLISHED THE NE'LY LINE OF LOT "L" OF R10 BY HOLDING A LINE PARALLEL WITH, AND A CALCULATED RECORD DISTANCE OF 15 FEET PER R10 NE'LY FROM LINE ESTABLISHMENT C.
- P ESTABLISHED THE N'LY LINE OF PARCEL GA 302-40.01 OF R40 AND ITS SW'LY PROLONGATION BY HOLDING A LINE BETWEEN MONUMENTS [12] AND [13].
- Q S.F.N. ESTABLISHED ANGLE POINT IN THE N'LY LINE OF PARCEL GA 302-40.01 OF R40 BY INTERSECTION OF LINE ESTABLISHMENTS N AND P.
- R S.F.N. ALONG THE N'LY LINE OF PARCEL GA 302-40.01. ESTABLISHED BY LEAST SQUARE ADJUSTMENT BETWEEN MONUMENTS [13] AND [14] PER R10.
- S ESTABLISHED THE NE'LY LINE OF LOT "M" OF R10 BY HOLDING A LINE PARALLEL WITH, AND A CALCULATED RECORD DISTANCE OF 15 FEET PER R10 NE'LY FROM COURSE ESTABLISHMENT R.
- T ESTABLISHED THE NE'LY LINE OF LOT "M" OF R10 BY HOLDING A RECORD RADIUS OF 36.26 FEET PER R10 AND TANGENT TO LINE ESTABLISHMENT P AND COURSE ESTABLISHMENT S.
- U ESTABLISHED THE N'LY LINE OF LOT "M" OF R10 BY HOLDING A RECORD RADIUS OF 52.50 FEET PER R10 AND TANGENT TO COURSE ESTABLISHMENTS R AND S.
- V ESTABLISHED ANGLE POINT IN THE N'LY LINE OF PARCEL GA 302-40.01 OF R40 BY HOLDING DISTANCE-DISTANCE-INTERSECTION PER R10 E'LY FROM MONUMENT [14] AND SW'LY FROM MONUMENT [15].
- W ESTABLISHED THE N'LY LINE OF PARCEL GA 302-40.01 OF R40 BY HOLDING A LINE BETWEEN MONUMENT [14] AND ESTABLISHMENT U.
- X ESTABLISHED THE N'LY LINE OF PARCEL GA 302-40.01 OF R40 BY HOLDING A LINE BETWEEN MONUMENT [15] AND ESTABLISHMENT U.
- Y S.F.N. ALONG THE N'LY LINE OF PARCEL GA 302-40.01. ESTABLISHED BY LEAST SQUARE ADJUSTMENT BETWEEN MONUMENTS [15] AND [16] PER R10.
- Z ESTABLISHED THE N'LY LINE OF LOT "N" OF R10 BY HOLDING RECORD COURSES PER R10 NE'LY FROM MONUMENT [14].
- AA ESTABLISHED THE N'LY LINE OF LOT "N" OF R10 BY HOLDING A LINE PARALLEL WITH, AND A CALCULATED RECORD DISTANCE OF 15 FEET PER R10 N'LY FROM COURSE ESTABLISHMENT Y.
- AB S.F.N. ESTABLISHED ANGLE POINT IN THE N'LY LINE OF PARCEL GA 302-40.01 OF R40 BY LEAST SQUARE ADJUSTMENT BETWEEN MONUMENTS [15] AND [16] PER R10.
- AC S.F.N. ESTABLISHED ANGLE POINT IN THE N'LY LINE OF LOT "N" OF R10 BY HOLDING A RECORD DISTANCE OF 133.51 FEET PER R10 NW'LY FROM ESTABLISHMENT A ALONG LINE ESTABLISHMENT U.
- AD ESTABLISHED THE N'LY LINE OF LOT "N" OF R10 BY HOLDING A RECORD RADIUS OF 67.50 FEET PER R10 AND TANGENT TO COURSE ESTABLISHMENT Z AND LINE ESTABLISHMENT U.
- AE S.F.N. ESTABLISHED ANGLE POINT IN THE N'LY LINE OF PARCEL GA 302-40.01 OF R40 BY HOLDING RECORD COURSES PER R10 S'LY FROM ESTABLISHMENT C.
- AF S.F.N. ALONG THE N'LY AND NE'LY LINE OF PARCEL GA 302-40.01 OF R40. ESTABLISHED BY LEAST SQUARE ADJUSTMENT BETWEEN ESTABLISHMENT A AND MONUMENT [16] PER R10 AND R11.
- AG S.F.N. ESTABLISHED THE N'LY CORNER OF LOT 72 OF R11 BY PROPORTION CALCULATED PER R11 BETWEEN ESTABLISHMENTS A AND M.

**ESTABLISHMENT NOTES CONT.**

- AP S.F.N. ESTABLISHED THE W'LY CORNER OF LOT 72 OF R11 BY LEAST SQUARE ADJUSTMENT BETWEEN ESTABLISHMENT A AND MONUMENT [16] PER R10 AND R11.
- AQ S.F.N. ALONG THE N'LY LINE OF LOT 72 OF R11. ESTABLISHED BY LEAST SQUARE ADJUSTMENT BETWEEN ESTABLISHMENTS A AND M PER R11.
- AA ESTABLISHED THE INTERSECTION OF THE CENTERLINE OF VIA DEL RIO AND THE SW'LY RIGHT OF WAY OF TRABUCO ROAD BY INTERSECTION OF LINE ESTABLISHMENTS C AND M.
- AB ESTABLISHED THE CENTERLINE OF TOLEDO WAY BY GRANT BOUNDARY ADJUSTMENT PER R16, CONCAVE SW'LY FROM MONUMENT [19] & [21], AND PASSING THROUGH MONUMENT [2].
- AC ESTABLISHED THE CENTERLINE OF TOLEDO WAY BY HOLDING A RADIUS OF 1400.00" PER R16, CONCAVE SW'LY FROM MONUMENT [21] NW'LY PASSING THROUGH MONUMENT [2].
- AD ESTABLISHED THE CENTERLINE OF TOLEDO WAY SW'LY FROM ESTABLISHMENT A AND TANGENT TO CENTERLINE ESTABLISHMENT A.
- AE ESTABLISHED THE CENTERLINE OF SERRANO ROAD BY GRANT BOUNDARY ADJUSTMENT BETWEEN MONUMENTS [19] & [23] PER R16
- AF ESTABLISHED BY HOLDING A RECORD DISTANCE OF 40 FEET PER R16 PERPENDICULAR TO LINE ESTABLISHMENT A FROM MONUMENT [21]
- AG ESTABLISHED BY GRANT BOUNDARY ADJUSTMENT BETWEEN ESTABLISHMENT A AND MONUMENT [36] PER R16
- AH ESTABLISHED BY GRANT BOUNDARY ADJUSTMENT BETWEEN MONUMENTS [27] AND [28]
- AI ESTABLISHED BY HOLDING RECORD ANGLE OF 122°06'50" PER R11 TO THE INTERSECTION OF SERRANO ROAD CENTERLINE FROM MONUMENT [26]
- AJ ESTABLISHED BY HOLDING RECORD DISTANCE OF 143.33" PER R41 TO THE TPOB PER R41, R46, SE'LY ALONG THE SW'LY RIGHT OF WAY OF TRABUCO ROAD FROM ESTABLISHMENT A.
- AK ESTABLISHED THE NE'LY CORNER OF PARCEL B OF R48 BY HOLDING RECORD DISTANCE OF 202.81" SE'LY PER R40 ALONG THE SW'LY RIGHT OF WAY OF TRABUCO ROAD FROM ESTABLISHMENT C.
- AL ESTABLISHED THE DESCRIBED LINE PER R41, BETWEEN ESTABLISHMENT A AND MONUMENT [28]

**MONUMENT NOTES**

- [1] FOUND SPIKE AND 1-1/4 INCH BRASS TAG STAMPED "LS 5301" PER R30, FLUSH IN A.C., ACCEPTED AS THE CENTERLINE INTERSECTION OF CALLE ENTRADA AND BAKE PARKWAY.
- [2] FOUND LEAD, TACK AND 3/4 INCH TAG STAMPED "CITY OF IRVINE" PER R32, FLUSH IN CONCRETE, ACCEPTED AS A TIE FOR THE CENTERLINE INTERSECTION OF TOLEDO WAY AND BAKE PARKWAY.
- [3] FOUND LEAD, TACK AND 3/4 INCH TAG STAMPED "LS 3246" PER R2, FLUSH IN CONCRETE, ACCEPTED AS A TIE FOR THE CENTERLINE INTERSECTION OF TOLEDO WAY AND BAKE PARKWAY PER R32.
- [4] FOUND 1-1/4 INCH ALUMINUM CAP STAMPED "RCE 16583" IN MONUMENT WELL PER R10, DOWN 1.4 FEET IN A.C., S21°12'51"W 0.07' FROM THE CENTERLINE INTERSECTION OF VIA DEL RIO AND BAKE PARKWAY. SEE ESTABLISHMENT C.
- [5] FOUND GEAR SPIKE AND WASHER STAMPED "RCE 29595" PER R31, FLUSH IN A.C., ACCEPTED AS THE CENTERLINE INTERSECTION OF TRABUCO ROAD AND VIA DEL RIO.
- [6] FOUND SQUARE HEAD SPIKE, ACCEPTED AS SPIKE AND WASHER STAMPED "RCE 16583" PER R20, DOWN 0.3 FEET IN A.C., ACCEPTED AS A POINT ON THE CENTERLINE OF VIA DEL RIO.
- [7] FOUND 2 INCH BRASS CAP STAMPED "RCE 23956" IN MONUMENT WELL PER R15, DOWN 1.7 FEET IN A.C., S29°18'47"W 0.1 FEET FROM THE CENTERLINE OF TRABUCO ROAD.
- [8] FOUND BOAT SPIKE AND ILLEGIBLE TAG PER R22, DOWN 0.3 FEET IN A.C., ACCEPTED AS A POINT ON THE CENTERLINE OF TRABUCO ROAD.
- [9] FOUND LEAD, TACK AND TAG STAMPED "RCE 23956" PER R12, FLUSH IN CONCRETE, ACCEPTED AS A POINT ON THE CENTERLINE OF OLD TRABUCO ROAD.
- [10] FOUND SQUARE HEAD SPIKE AND WASHER STAMPED "RCE 26821" PER R1, FLUSH IN A.C., ACCEPTED AS A POINT ON THE CENTERLINE OF OLD TRABUCO ROAD.
- [11] FOUND SQUARE HEAD SPIKE AND WASHER STAMPED "RCE 26821" PER R14, FLUSH IN A.C., ACCEPTED AS A POINT ON THE CENTERLINE OF OLD TRABUCO ROAD.
- [12] FOUND 1-1/2 INCH IRON PIPE WITH BRASS TAG STAMPED "RCE 16583" PER R10 UP 0.1 FEET IN DIRT, ACCEPTED AS A POINT ON THE N'LY LINE OF PARCEL GA 302-40.01 OF R40, N70°53'36"E 0.06 FEET FROM THE MOST E'LY CORNER OF LOT "L" OF R10.
- [13] FOUND 2 INCH IRON PIPE WITH 3/4 INCH TAG STAMPED "RCE 16583" PER R10, DOWN 0.5 FEET IN DIRT, ACCEPTED AS AN ANGLE POINT IN THE N'LY LINE OF PARCEL GA 302-40.01 OF R40 AND POINT ON TANGENT LINE OF LOT "M" OF R10, N70°53'36"E 0.08 FEET FROM THE B.C. OF THE N'LY LINE OF LOT "M" OF R10.
- [14] FOUND 2 INCH IRON PIPE WITH 3/4 INCH TAG STAMPED "RCE 16583" PER R10, DOWN 0.15 FEET IN DIRT, ACCEPTED AS AN ANGLE POINT IN THE N'LY LINE OF PARCEL GA 302-40.01 OF R40.
- [15] FOUND 2 INCH IRON PIPE WITH 3/4 INCH TAG STAMPED "RCE 16583" PER R10, DOWN 0.8 FEET IN DIRT, ACCEPTED AS AN ANGLE POINT IN THE N'LY LINE OF PARCEL GA 302-40.01 OF R40.
- [16] FOUND 2 INCH IRON PIPE WITH 3/4 INCH TAG STAMPED "RCE 16583" PER R10, UP 0.2 FEET IN DIRT, ACCEPTED AS AN ANGLE POINT IN THE N'LY LINE OF PARCEL GA 302-40.01 OF R40.
- [17] FOUND LEAD, TACK AND 3/4 INCH TAG STAMPED "OCS TIE" PER R21, ON TOP OF CURB, ACCEPTED AS A TIE FOR THE CENTERLINE INTERSECTION OF VIA DEL RIO AND BAKE PARKWAY.
- [18] FOUND LEAD PLUG IN LIEU OF LEAD, TACK, AND TAG STAMPED "OCS TIE" PER R21, NOT ACCEPTED AS A TIE FOR THE CENTERLINE INTERSECTION OF VIA DEL RIO AND BAKE PARKWAY.

**MONUMENT NOTES CONT.**

- [19] FOUND 1 3/4" PUNCHED BRASS DISC STAMPED "LS 2921 IN WELL MONUMENT PER R23, DOWN 1.32' ACCEPTED AS CENTERLINE INTERSECTION OF SERRANO ROAD & TOLEDO WAY
- [20] FOUND PK NAIL & WASHER STAMPED "O.C.S." PER R24, FLUSH IN A.C., ACCEPTED AS A POINT ON CENTERLINE OF TOLEDO WAY, S65°52'42"E 0.11' FROM THE E.C. OF TOLEDO WAY.
- [21] FOUND PK NAIL NO WASHER FLUSH IN A.C., ACCEPTED AS PK NAIL AND WASHER STAMPED "O.C.S." PER R6, ACCEPTED AS CENTERLINE E.C. OF TOLEDO WAY.
- [22] FOUND PK NAIL & WASHER STAMPED "O.C.S." NO REF, FLUSH IN A.C., ACCEPTED AS A POINT ON CENTERLINE OF TOLEDO WAY S54°01'32"E 1.13' FROM THE B.C. OF TOLEDO WAY.
- [23] FOUND SPIKE & WASHER, ILLEGIBLE, FLUSH IN A.C. NO REFERENCE, SHOWN BY R16, & R25, ACCEPTED AS CENTERLINE E.C. OF SERRANO ROAD
- [24] FOUND 2" IRON PIPE WITH TAG STAMPED LS 2921 PER R17, FLUSH IN DIRT, N07°41'34"W 0.15' FROM B.C. RIGHT OF WAY SERRANO ROAD
- [25] FOUND LEAD & TAG STAMPED RCE 21687 PER R16, FLUSH IN SIDEWALK, N44°08'15"E 0.22' FROM RIGHT OF WAY TOLEDO WAY
- [26] FOUND 1" IRON PIPE, PER R16, WITH NAIL NO TAG, FLUSH IN DIRT, ACCEPTED AS ANGLE POINT IN NW'LY LINE OF R16
- [27] FOUND 1" IRON PIPE W/NAIL & TAG "LS 4101", NO REF AS SHOWN BY R16, FLUSH IN DIRT, ACCEPTED AS ANGLE POINT
- [29] FOUND 1" IRON PIPE W/NAIL & TAG "LS 4101", PER R16, FLUSH IN DIRT, ACCEPTED AS ANGLE POINT
- [30] FOUND 1" IRON PIPE W/NAIL & TAG "LS 4101", PER R16, FLUSH IN DIRT, ACCEPTED AS ANGLE POINT
- [31] FOUND 1" IRON PIPE & YELLOW PLASTIC PLUG STAMPED "RCE 21687", PER R16, DN 0.2', ACCEPTED AS ANGLE POINT
- [32] FOUND 1" IRON PIPE & YELLOW PLASTIC PLUG STAMPED "RCE 21687", PER R16, DN 0.2', ACCEPTED AS ANGLE POINT
- [33] FOUND 1" IRON PIPE & YELLOW PLASTIC PLUG STAMPED "RCE 21687", PER R16, DN 0.2', ACCEPTED AS ANGLE POINT
- [34] FOUND 1" IRON PIPE & YELLOW PLASTIC PLUG STAMPED "RCE 21687", PER R16, DN 0.2', ACCEPTED AS ANGLE POINT
- [36] FOUND 1" IRON PIPE & YELLOW PLASTIC PLUG STAMPED "RCE 21687", PER R16, DN 0.2', ACCEPTED AS ANGLE POINT
- [37] FOUND 1" IRON PIPE & YELLOW PLASTIC PLUG STAMPED "RCE 21687", PER R16, DN 0.2', ACCEPTED AS ANGLE POINT
- [38] FOUND 1" IRON PIPE, PER R16, NAIL NO TAG, FLUSH IN DIRT, ACCEPTED AS A ANGLE POINT ON BOUNDARY LINE OF TR. 8742 M.M. 366/10-11 LOT 1

**BASIS OF BEARINGS**

THE BASIS OF BEARINGS FOR THIS SURVEY IS BASED ON THE CALIFORNIA COORDINATE SYSTEM (CCS83), ZONE VI, NAD 83, OCS (2017.50) EPOCH ADJUSTMENT, AS DETERMINED LOCALLY BY A LINE BETWEEN CONTINUOUS GLOBAL POSITIONING STATIONS (TRAK) AND (OEOC) BEING NORTH 19°21'49" EAST AS DERIVED FROM THE COORDINATES PUBLISHED BY THE CALIFORNIA SPATIAL REFERENCE CENTER (CSRC) ALONG WITH DATA SHEETS ON FILE IN THE OFFICE OF THE ORANGE COUNTY SURVEYOR.

**HORIZONTAL DATUM**

COORDINATES SHOWN ARE BASED ON THE CALIFORNIA COORDINATE SYSTEM (CCS83), ZONE VI, NAD 83, OCS (2017.50) EPOCH ADJUSTMENT.

ALL DISTANCES SHOWN ARE GRID, UNLESS OTHERWISE NOTED. TO OBTAIN GROUND DISTANCE MULTIPLY A GRID DISTANCE BY 1.00004467.

COMBINATION FACTOR WAS HELD AT POINT NUMBER 403 N:2182942.62', E:6121188.66', ELEVATION= 403.07'

RECORD DISTANCES SHOWN HEREON ARE AS THEY APPEAR ON THE DOCUMENT OF RECORD. DISTANCES MAY BE EITHER GRID OR GROUND, AS PER SAID RECORD.

ALL DISTANCES ARE BASED ON THE U.S. SURVEY FOOT.

**NOTES**

ALL BOUNDARY LINES NOT SHOWN IN BOLD ARE FOR GRAPHICAL REPRESENTATION ONLY.

RECORD DISTANCES SHOWN HEREON ARE AS THEY APPEAR ON THE DOCUMENT OF RECORD. DISTANCES MAY BE EITHER GRID OR GROUND, AS PER SAID RECORD.

REFERENCE DOCUMENTS IN THE REFERENCE LEGEND ARE LIVE HYPERLINKS TO SAID DOCUMENT.

**REFERENCES**

- (R1) = PARCEL MAP NO. 84-120, P.M.B. 191/26-28
- (R2) = PARCEL MAP NO. 87-391, P.M.B. 235/41-43
- (R10) = TRACT NO. 8892, M.M. 354/17-34
- (R11) = TRACT NO. 8829, M.M. 400/43-45
- (R12) = TRACT NO. 9619, M.M. 415/8-10
- (R13) = TRACT NO. 11388, M.M. 508/44-45
- (R14) = TRACT NO. 12224, M.M. 555/16-21
- (R15) = TRACT NO. 11279, M.M. 493/14-21
- (R16) = TRACT NO. 8742 MM 366/10-11
- (R17) = TRACT NO. 7395 MM 281/13-16
- (R20) = O.C.S. ALIGNMENT NOTE A/6-8/3015-3040
- (R21) = O.C.S. ALIGNMENT NOTE A/6-8/5797-5803
- (R22) = O.C.S. ALIGNMENT NOTE A/6-8/6422-6429
- (R23) = O.C.S. ALIGNMENT NOTES A/6-8, PGS. 2608-2642
- (R24) = O.C.S. ALIGNMENT NOTES A/6-8, PGS. 5797-5803
- (R25) = O.C.S. ALIGNMENT NOTES A/6-8, PGS. 6461-6164
- (R30) = CORNER RECORD, C.R. 1997-0202
- (R31) = CORNER RECORD, C.R. 2012-3477
- (R32) = CORNER RECORD, C.R. 2008-0302
- (R40) = GRANT DEED, O.R. 11226-520
- (R41) = QUITCLAIM DEED, INSTRUMENT NO. 200500903385, O.R.
- (R42) = EASEMENT DEED, INSTRUMENT NO. 200500903391, O.R.
- (R43) = EASEMENT DEED, INSTRUMENT NO. 200500903393, O.R.
- (R45) = EASEMENT DEED, INSTRUMENT NO. 200500903387 O.R.
- (R46) = QUITCLAIM DEED, INSTRUMENT NO. 200500903394 O.R.
- (R47) = EASEMENT DEED, INSTRUMENT NO. 200500903388 O.R.
- (R48) = GRANT DEED, INSTRUMENT O.R. 11915-116
- (R50) = HORIZONTAL CONTROL DATA SHEET, G.P.S. 6671
- (R60) = SURVEY CONTROL SCHEMATIC, SURVEY NO. 023PW-FL550006



		COUNTY OF ORANGE OC PUBLIC WORKS OC SURVEY/FIELD SERVICES/BOUNDARY ANALYSIS & MAPPING	
		<b>SERRANO CREEK (F19) MITIGATION SURVEY</b>	
		BOUNDARY MAP	
		PROJECT LIMITS: SERRANO CREEK (F19) UPSTREAM TRABUCO ROAD DOWNSTREAM TO BAKE PKWY.	
		DATE OF SURVEY: 01/2022 TO 12/2023	BY: T. LOFGREEN, PLS
		MAPPING	BY: T. LOFGREEN, PLS
		OFFICE CHECK	BY: M. KUBISTY, PLS
		FIELD CHECK	BY: T. LOFGREEN, PLS
		SCALE: N.T.S.	W.O. # FILE # 2526PW-ER0006
		FILE: SERRANO CREEK MITIGATION BNDRY.DWG	
MARK	DATE	ITEM	
REVISIONS			
			SHEET NO. <b>2</b> of <b>6</b>

LINE TABLE			
LINE #	BEARING	MEASURED DISTANCE	RECORD DISTANCE
L1	N70°53'36"E	210.25'	(210.21' C R10)
L2	N00°07'01"W	87.15'	(87.16' R32)
L3	N74°59'58"W	90.74'	(90.75' R32)
L4	N01°07'50"W	85.29'	(85.30' R32)
L5	N40°32'25"E	84.80'	(84.81' R32)
L6	N78°22'22"W	56.16'	(56.17' R21)
L7	N11°19'34"W	69.69'	(69.77' R21)
L8	N76°11'01"E	79.58'	(79.60' R21)
L9	N43°39'33"W	85.69'	(85.68' R21)
L10	N57°13'52"W	342.98'	(342.98' R22)
L11	N57°13'52"W	167.51'	(167.52' R10)
L12	N70°53'36"E	229.31'	(229.31' R10)
L13	N54°52'47"W	321.54'	(321.48' R10)
L14	N40°44'36"W	246.61'	(246.56' R10)
L15	N37°45'39"W	172.29'	(172.26' R10)
L16	N54°52'47"W	294.03'	(293.97' R10)
L17	N40°44'36"W	248.86'	(248.81' R10)
L18	N37°45'39"W	172.72'	(172.69' R10)
L19	N86°07'36"E	255.77'	(255.78' R10)
L20	N37°17'25"E	137.19'	(137.20' R10)
L21	N78°33'31"E	530.69'	(530.74' R10)
L22	N82°33'32"E	231.07'	(231.08' R10)
L23	N42°31'24"E	110.64'	(110.60' R10)
L24	N78°33'31"E	360.46'	(360.58' R10)
L25	N85°00'36"E	133.50'	(133.51' R10)
L26	N60°36'43"W	280.58'	(280.61' R10)
L27	N81°10'30"W	252.56'	(252.58' R10)
L28	N84°47'27"W	337.09'	(337.08' R10)
L29	N77°28'52"E	215.65'	(215.64' C R10&R11)
L30	N73°19'07"W	260.17'	(260.16' R11)
L31	N60°06'39"W	204.92'	(204.90' C R11)
L32	N59°49'18"E	226.97'	(226.96' R11)
L33	N54°05'37"E	230.21'	(230.20' R11)
L34	N24°14'40"E	174.64'	(174.64' R11)
L35	N44°20'13"E	145.12'	(145.12' R11)
L36	N29°18'47"E	60.00'	(60.00' R11)
L37	N63°17'16"W	189.50'	(189.48' R11)
L38	N55°54'32"W	30.00'	(30.00' R11)
L39	N71°18'58"W	74.49'	(74.48' R11)
L40	N76°21'42"E	89.36'	(89.35' R11)
L41	N48°22'56"E	219.32'	(219.30' R11)
L42	N40°23'35"E	117.48'	(117.47' R11)
L43	N32°20'41"E	166.03'	(166.02' R11)
L44	N31°02'34"E	141.46'	(141.45' R11)
L45	N60°41'13"W	131.69'	(131.70' R11)
L46	N26°04'44"E	26.76'	(26.89' R11)
L47	N60°41'13"W	211.62'	(211.58' R60)
L48	N63°55'16"W	180.95'	(180.96' R14)
L49	N29°23'10"E	5.83'	-----
L50	N29°23'10"E	34.51'	-----
L51	N29°23'10"E	25.49'	(25.53' R11)
L52	N29°23'10"E	65.83'	-----
L53	N35°56'01"E	25.04'	-----
L54	N57°13'52"W	60.09'	-----

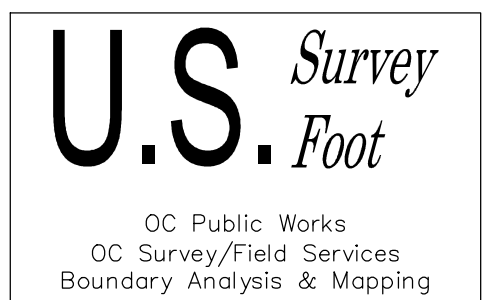
LINE TABLE			
LINE #	BEARING	MEASURED DISTANCE	RECORD DISTANCE
L55	N05°51'39"W	109.86'	110.15' (R16)
L56	N48°37'15"W	95.00'	95.02' (R16)
L57	N12°08'26"W	95.34'	95.34' (R16)
L58	N84°30'48"W	91.64'	91.50' (R16)
L59	N10°36'19"E	109.70'	109.91' (R16)
L60	N38°34'56"E	97.23'	97.52' (R16)
L61	S87°00'13"E	67.74'	68.08' (R16)
L62	S39°43'02"E	66.93'	67.00' (R16)
L63	S17°19'15"E	158.93'	159.63' (R16)
L64	N84°30'48"W	57.27'	56.90' (R16)
L65	N18°08'26"E	89.93'	89.98' (R41)
L66	N75°32'33"W	79.99'	79.99' (R41)
L67	N71°42'34"W	64.73'	64.73' (R41)
L68	N62°58'48"W	44.37'	44.37' (R41)
L69	N68°59'10"W	55.51'	55.51' (R41)
L70	N70°54'55"E	135.93'	135.94' (R41)
L72	N84°08'43"W	49.35'	49.35' (R41)
L73	N89°07'45"E	56.40'	56.40' (R41)
L74	N84°50'04"E	60.51'	60.51' (R41)
L75	N63°39'52"E	56.28'	56.28' (R41)
L76	N66°14'56"E	77.42'	77.42' (R41)
L77	N54°50'19"E	46.36'	46.36' (R41)
L78	N43°11'10"E	40.15'	40.15' (R41)
L79	N36°35'37"E	57.95'	57.95' (R41)
L80	N51°43'10"E	82.65'	82.65' (R41)
L81	N87°33'31"W	90.82'	90.82' (R41)
L82	N78°44'44"W	95.55'	95.55' (R41)
L83	N79°18'57"W	93.36'	93.36' (R41)
L84	N76°54'13"W	92.99'	92.99' (R41)
L85	N71°55'10"W	97.57'	97.57' (R41)
L86	N73°45'44"W	48.08'	48.08' (R41)
L87	N86°26'00"W	72.67'	72.67' (R41)
L88	N80°06'15"E	108.25'	108.25' (R41)
L89	N83°14'10"W	84.14'	84.14' (R41)
L90	N78°15'08"W	96.46'	96.46' (R41)
L91	N75°58'51"W	99.11'	99.11' (R41)
L92	N79°40'20"W	107.19'	107.19' (R41)
L93	N79°55'28"W	100.82'	100.82' (R41)
L94	N82°41'42"W	98.37'	98.37' (R41)
L95	N80°30'30"W	41.27'	41.27' (R41)
L96	N73°52'40"W	53.46'	53.46' (R41)
L97	N71°37'20"W	97.69'	97.69' (R41)
L98	N89°56'27"E	44.11'	44.11' (R41)
L99	N88°31'15"W	110.24'	110.25' (R41)
L100	N73°19'01"W	84.55'	84.55' (R41)
L101	N67°46'37"W	47.87'	47.87' (R41)
L102	N78°55'31"W	39.44'	39.44' (R41)
L103	N87°27'02"W	89.45'	89.45' (R41)
L104	N57°57'18"W	196.23'	196.24' (R41)
L105	N82°48'07"W	89.10'	89.10' (R41)

LINE TABLE			
LINE #	BEARING	MEASURED DISTANCE	RECORD DISTANCE
L106	N77°50'26"E	50.18'	50.18' (R41)
L107	N57°34'33"E	77.08'	77.08' (R41)
L108	N54°18'25"E	43.65'	43.65' (R41)
L109	N61°44'51"E	42.71'	42.71' (R41)
L110	N55°42'05"E	47.04'	47.04' (R41)
L111	N66°08'30"E	41.28'	41.28' (R41)
L112	N70°54'05"E	66.81'	66.81' (R41)
L113	N72°05'07"E	63.55'	63.55' (R41)
L114	N53°52'37"E	71.43'	71.43' (R41)
L115	N43°22'51"E	58.57'	58.57' (R41)
L116	N29°10'29"E	62.00'	62.00' (R41)
L117	N20°31'16"E	81.90'	81.90' (R41)
L118	N31°21'12"E	50.77'	50.77' (R41)
L119	N56°05'28"E	94.60'	94.60' (R41)
L120	N66°11'21"E	92.27'	92.27' (R41)
L121	N67°06'33"E	16.19'	16.19' (R41)
L122	N60°41'13"W	143.33'	143.33' (R41)
L123	N60°41'13"W	59.48'	59.48' (R41)
L124	N07°56'56"W	37.54'	37.49' (R10)
L125	N74°44'37"W	36.06'	36.10' (R16)
L126	N35°56'01"E	67.00'	67.00' (R10)
L127	N54°01'32"E	86.00'	86.00' (R10)
L128	N63°41'26"E	65.97'	65.97' (R16)
L134	N54°01'32"W	284.11'	284.36' (C R16)
L135	N54°01'32"W	198.12'	198.96' (R40)
L136	N65°52'42"W	205.14'	205.22' (R16)
L137	N65°52'42"W	205.14'	205.22' (R16)

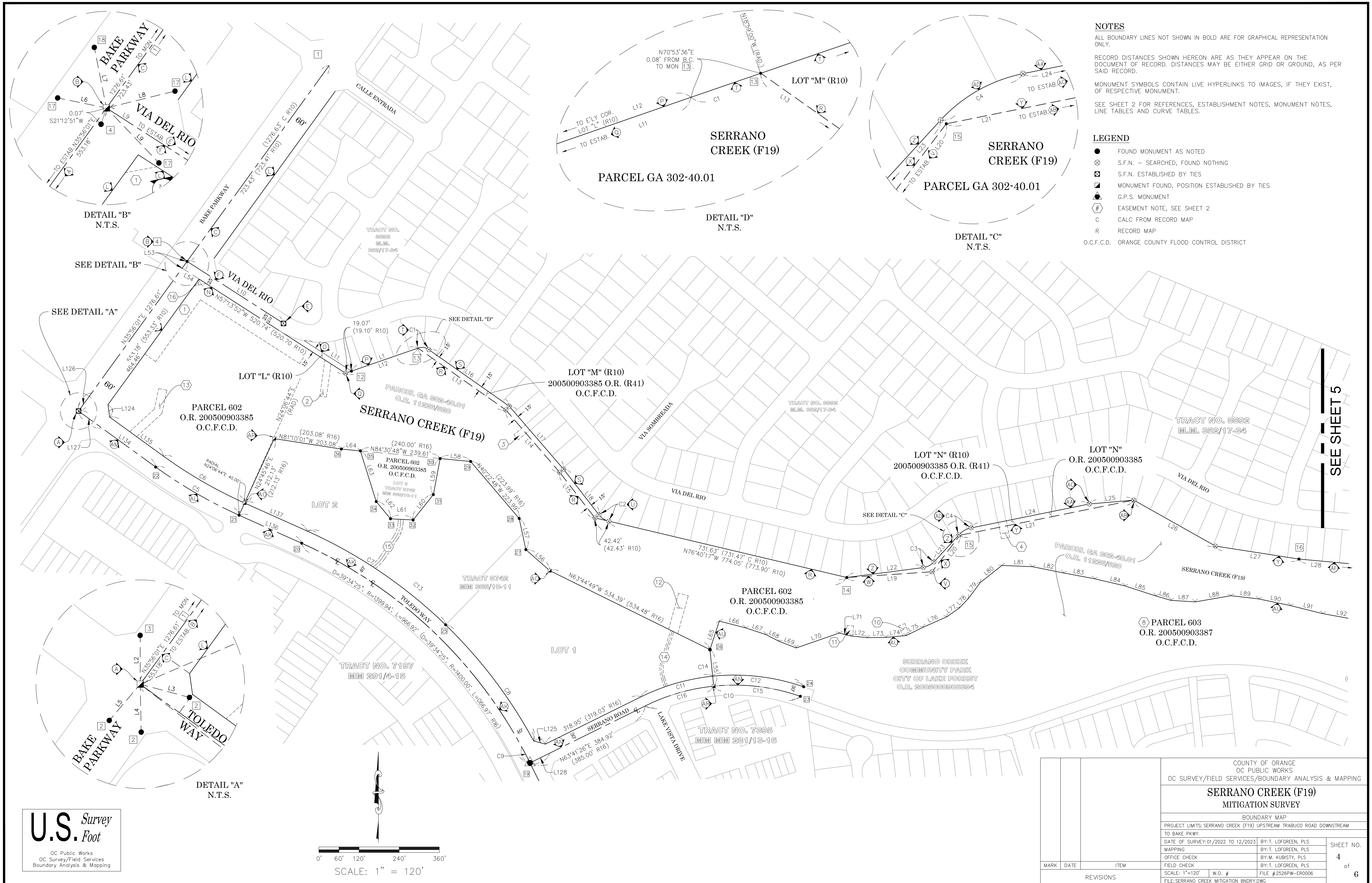
CURVE TABLE						
CURVE #	DELTA	RADIUS	LENGTH	RECORD DELTA	RECORD RADIUS	RECORD LENGTH
C1	54°13'37"	36.26'	34.32'	(54°06'05" R10)	(36.26' R10)	(34.24' R10)
C2	38°54'38"	52.50'	35.65'	(38°54'38" R10)	(52.50' R10)	(35.65' R10)
C3	40°02'08"	52.50'	36.68'	(40°02'08" R10)	(52.50' R10)	(35.65' R10)
C4	36°02'06"	67.50'	42.45'	(36°00'57" R10)	(67.50' R10)	(42.43' R10)
C5	11°51'10"	1399.94'	289.61'	(11°48'23" R10)	(1400.00' R10)	(288.48' R10)
C6	11°51'10"	1359.94'	281.33'	-----	-----	-----
C7	20°00'56"	1439.94'	503.03'	(20°00'40" R10)	(1440.00' R10)	(502.93' R10)
C8	17°24'34"	1439.94'	437.53'	(17°24'50" R10)	(1440.00' R10)	(437.66' R10)
C9	2°08'55"	1399.94'	52.50'	(02°08'55" R10)	(1400.00' R10)	(52.50' R10)
C10	45°33'36"	599.97'	477.08'	(45°33'36" R10)	(600.00' R10)	(477.10' R10)
C11	20°25'50"	629.97'	224.63'	(20°25'12" R10)	(630.00' R10)	(224.53' R10)
C12	25°07'46"	629.97'	276.30'	(25°08'24" R10)	(630.00' R10)	(276.43' R10)
C13	37°25'30"	1439.94'	940.55'	(37°25'30" R10)	(1440.00' R10)	(940.59' R10)
C14	45°33'36"	629.97'	500.93'	(45°33'36" R10)	(630.00' R10)	(C 500.96' R10)
C15	25°07'50"	599.97'	263.15'	(25°08'24" R10)	(600.00' R10)	(263.26' R10)
C16	20°25'46"	599.97'	213.93'	(20°25'12" R10)	(600.00' R10)	(213.84' R10)

**EASEMENT NOTES**

- ① EASEMENT GRANTED TO THE COUNTY OF ORANGE FOR LANDSCAPE PURPOSES WITHIN PARCEL 652 OF R42
- ② EASEMENT GRANTED TO THE CITY OF LAKE FOREST FOR STORM DRAIN AND APPURTENANT PURPOSES WITHIN PARCEL 655 PER R43.
- ③ EASEMENT GRANTED TO THE CITY OF LAKE FOREST FOR STORM DRAIN AND APPURTENANT PURPOSES WITHIN PARCEL 656 PER R43.
- ④ EASEMENT GRANTED TO THE CITY OF LAKE FOREST FOR STORM DRAIN AND APPURTENANT PURPOSES WITHIN PARCEL 657 PER R43.
- ⑤ EASEMENT GRANTED TO THE CITY OF LAKE FOREST FOR STORM DRAIN AND APPURTENANT PURPOSES WITHIN PARCEL 658 PER R43.
- ⑥ EASEMENT GRANTED TO THE CITY OF LAKE FOREST FOR STORM DRAIN AND APPURTENANT PURPOSES WITHIN PARCEL 659 PER R43.
- ⑦ EASEMENT GRANTED TO THE ORANGE COUNTY FLODD CONTROL DISTRICT (O.C.F.C.D.) FOR INGRESS AND EGRESS PURPOSES TO AND FROM SERRANO CREEK FACILITY NO. 19 PER R47.
- ⑧ EASEMENT GRANTED TO THE ORANGE COUNTY FLODD CONTROL DISTRICT (O.C.F.C.D.) FOR INGRESS AND EGRESS PURPOSES TO AND FROM SERRANO CREEK FACILITY NO. 19 WITHIN PARCEL 603 PER R45.
- ⑨ EASEMENT GRANTED TO THE CITY OF LAKE FOREST FOR STORM DRAIN AND APPURTENANT PURPOSES WITHIN PARCEL 660 PER R43.
- ⑩ EASEMENT GRANTED TO THE CITY OF LAKE FOREST FOR STORM DRAIN AND APPURTENANT PURPOSES WITHIN PARCEL 661 PER R43.
- ⑪ EASEMENT GRANTED TO THE CITY OF LAKE FOREST FOR STORM DRAIN AND APPURTENANT PURPOSES WITHIN PARCEL 662 PER R43.
- ⑫ EASEMENT GRANTED TO THE CITY OF LAKE FOREST FOR STORM DRAIN AND APPURTENANT PURPOSES WITHIN PARCEL 663 PER R43.
- ⑬ EASEMENT GRANTED TO THE CITY OF LAKE FOREST FOR STORM DRAIN AND APPURTENANT PURPOSES WITHIN PARCEL 664 PER R43.
- ⑭ 10' EASEMENT GRANTED TO THE COUNTY OF ORANGE FOR THE PURPOSE OF DRAINAGE, PER R16.
- ⑮ 15' EASEMENT GRANTED TO THE COUNTY OF ORANGE FOR THE PURPOSE OF DRAINAGE, PER R16.
- ⑯ EASEMENT GRANTED TO THE CITY OF LAKE FOREST FOR THE PURPOSE OF PUBLIC STREET AND HIGHWAY PURPOSES, PER INSTRUMENT NO. 200500903390 O.R.



		COUNTY OF ORANGE OC PUBLIC WORKS OC SURVEY/FIELD SERVICES/BOUNDARY ANALYSIS & MAPPING	
		<b>SERRANO CREEK (F19) MITIGATION SURVEY</b>	
		BOUNDARY MAP	
		PROJECT LIMITS: SERRANO CREEK (F19) UPSTREAM TRABUCO ROAD DOWNSTREAM TO BAKE PKWY.	
		DATE OF SURVEY: 01/2022 TO 12/2023	BY: T. LOFGREEN, PLS
		MAPPING	BY: T. LOFGREEN, PLS
		OFFICE CHECK	BY: M. KUBISTY, PLS
		FIELD CHECK	BY: T. LOFGREEN, PLS
		SCALE: N.T.S.	W.O. #
		FILE: #2526PW-ER0006	
		FILE: SERRANO CREEK MITIGATION BNDRY.DWG	
MARK	DATE	ITEM	
REVISIONS			
		SHEET NO. <b>3</b> of <b>6</b>	



**NOTES**  
 ALL BOUNDARY LINES NOT SHOWN IN BOLD ARE FOR GRAPHICAL REPRESENTATION ONLY.  
 RECORD DISTANCES SHOWN HEREON ARE AS THEY APPEAR ON THE DOCUMENT OF RECORD. DISTANCES MAY BE EITHER GRID OR GROUND, AS PER SAID RECORD.  
 MONUMENT SYMBOLS CONTAIN LIVE HYPERLINKS TO IMAGES, IF THEY EXIST, OF RESPECTIVE MONUMENT.  
 SEE SHEET 2 FOR REFERENCES, ESTABLISHMENT NOTES, MONUMENT NOTES, LINE TABLES AND CURVE TABLES.

- LEGEND**
- FOUND MONUMENT AS NOTED
  - ⊗ S.F.N. - SEARCHED, FOUND NOTHING
  - ⊠ S.F.N. ESTABLISHED BY TIES
  - ⊡ MONUMENT FOUND, POSITION ESTABLISHED BY TIES
  - ▲ G.P.S. MONUMENT
  - ⊕ EASEMENT NOTE, SEE SHEET 2
  - C CALC FROM RECORD MAP
  - R RECORD MAP
  - O.C.F.C.D. ORANGE COUNTY FLOOD CONTROL DISTRICT

DETAIL "B"  
N.T.S.

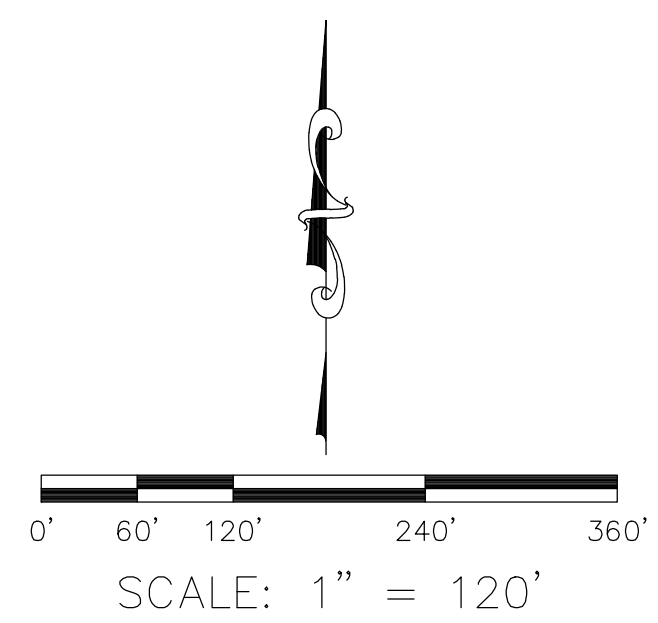
DETAIL "D"  
N.T.S.

DETAIL "C"  
N.T.S.

DETAIL "A"  
N.T.S.

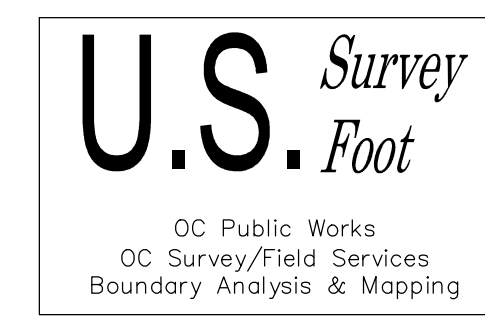
SEE SHEET 5

**U.S. Survey Foot**  
 OC Public Works  
 OC Survey/Field Services  
 Boundary Analysis & Mapping



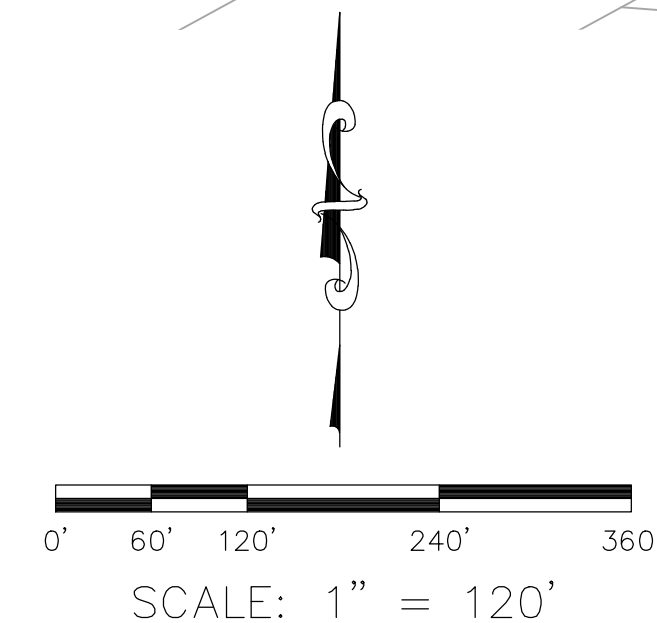
COUNTY OF ORANGE OC PUBLIC WORKS OC SURVEY/FIELD SERVICES/BOUNDARY ANALYSIS & MAPPING		SERRANO CREEK (F19) MITIGATION SURVEY	
BOUNDARY MAP			
PROJECT LIMITS: SERRANO CREEK (F19) UPSTREAM TRABUCO ROAD DOWNSTREAM TO BAKE PKWY.			
DATE OF SURVEY: 01/2022 TO 12/2023	BY: T. LOFGREEN, PLS	SHEET NO. 4 of 6	
MAPPING	BY: T. LOFGREEN, PLS		
OFFICE CHECK	BY: M. KUBISTY, PLS		
FIELD CHECK	BY: T. LOFGREEN, PLS		
SCALE: 1"=120'	W.O. #	FILE # 2526PW-ER0006	
FILE: SERRANO CREEK MITIGATION BNDRY.DWG			

SEE SHEET 4



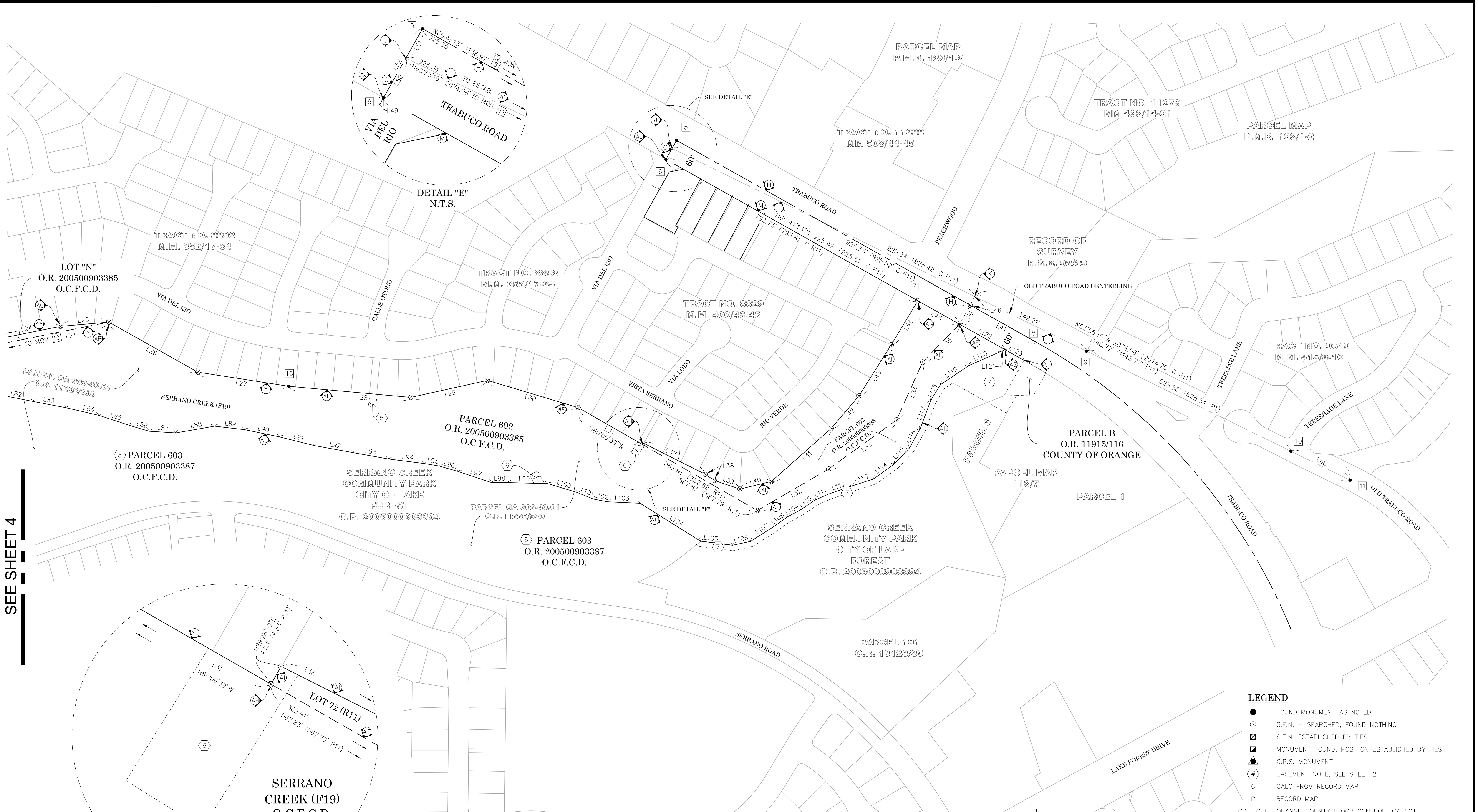
DETAIL "F"  
N.T.S.

**NOTES**  
 ALL BOUNDARY LINES NOT SHOWN IN BOLD ARE FOR GRAPHICAL REPRESENTATION ONLY.  
 RECORD DISTANCES SHOWN HEREON ARE AS THEY APPEAR ON THE DOCUMENT OF RECORD. DISTANCES MAY BE EITHER GRID OR GROUND, AS PER SAID RECORD.  
 MONUMENT SYMBOLS CONTAIN LIVE HYPERLINKS TO IMAGES, IF THEY EXIST, OF RESPECTIVE MONUMENT.  
 SEE SHEET 2 FOR REFERENCES, ESTABLISHMENT NOTES, MONUMENT NOTES, LINE TABLES AND CURVE TABLES.



- LEGEND**
- FOUND MONUMENT AS NOTED
  - ⊗ S.F.N. - SEARCHED, FOUND NOTHING
  - ⊠ S.F.N. ESTABLISHED BY TIES
  - ⊡ MONUMENT FOUND, POSITION ESTABLISHED BY TIES
  - ▲ G.P.S. MONUMENT
  - ⊕ EASEMENT NOTE, SEE SHEET 2
  - C CALC FROM RECORD MAP
  - R RECORD MAP
  - O.C.F.C.D. ORANGE COUNTY FLOOD CONTROL DISTRICT

COUNTY OF ORANGE OC PUBLIC WORKS OC SURVEY/FIELD SERVICES/BOUNDARY ANALYSIS & MAPPING		SHEET NO. <b>5</b> of <b>6</b>
<b>SERRANO CREEK (F19) MITIGATION SURVEY</b>		
BOUNDARY MAP		
PROJECT LIMITS: SERRANO CREEK (F19) UPSTREAM TRABUCO ROAD DOWNSTREAM TO BAKE PKWY.		
DATE OF SURVEY: 01/2022 TO 12/2023	BY: T. LOFGREEN, PLS	FILE: #2526PW-ER0006
MAPPING	BY: T. LOFGREEN, PLS	
OFFICE CHECK	BY: M. KUBISTY, PLS	
FIELD CHECK	BY: T. LOFGREEN, PLS	
SCALE: 1"=120'	W.O. #	
FILE: SERRANO CREEK MITIGATION BNDRY.DWG		



SEE SHEET 4

SEE SHEET 5

PARCEL 602  
O.R. 200500903385  
O.C.F.C.D.

LOT "M" (R10)  
200500903385 O.R. (R41)  
O.C.F.C.D.

PARCEL GA 302-40.01  
O.R. 11226/520

TRACT NO. 8692  
M.M. 352/17-34

PARCEL 602  
O.R. 200500903385  
O.C.F.C.D.

LOT 3  
TRACT 8742  
M.M. 366/10-11

PARCEL 602  
O.R. 200500903385  
O.C.F.C.D.

ⓑ EASEMENT  
O.R. 200500903387  
O.C.F.C.D.

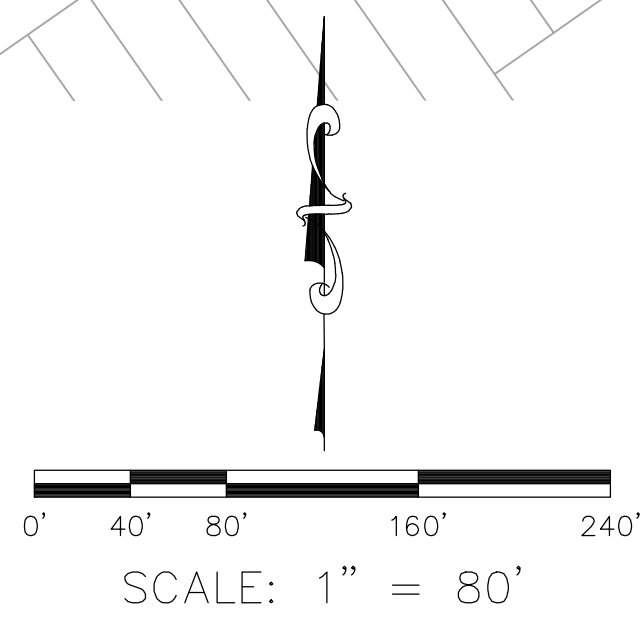
TRACT NO. 7197  
M.M. 291/4-15

TRACT 8742  
M.M. 366/10-11



REFERENCES

- (R1) = TRACT NO. 8742 MM 366/10-11
- (R2) = TRACT NO. 7395 MM 281/13-16
- (R5) = O.C.S. ALIGNMENT NOTES A/6-8, PGS. 2608-2642
- (R6) = O.C.S. ALIGNMENT NOTES A/6-8, PGS. 5797-5803
- (R7) = O.C.S. ALIGNMENT NOTES A/6-8, PGS. 6461-4164
- (R10) = BOOK 11226 PAGES 520-524 OFFICIAL RECORDS ORANGE COUNTY
- (R11) = INSTRUMENT # 200500903385 OFFICIAL RECORDS ORANGE COUNTY



LEGEND

- FOUND MONUMENT AS NOTED
- ▣ S.F.N., ESTABLISHED BY GRANT BOUNDARY
- R RECORD MAP

COUNTY OF ORANGE OC PUBLIC WORKS OC SURVEY/FIELD SERVICES/BOUNDARY ANALYSIS & MAPPING		BOUNDARY MAP	
PROJECT LIMITS: SERRANO CREEK (F19) UPSTREAM TRABUCO ROAD DOWNSTREAM TO BAKE PKWY.		DATE OF SURVEY: 01/2022 TO 12/2023	
DATE OF SURVEY: 01/2022 TO 12/2023		BY: T. LOFGREEN, PLS	
MAPPING		BY: T. LOFGREEN, PLS	
OFFICE CHECK		BY: M. KUBISTY, PLS	
FIELD CHECK		BY: T. LOFGREEN, PLS	
SCALE: 1"=80'		W.O. #	
FILE: #2526PW-ER0006		FILE: SERRANO CREEK MITIGATION BNDRY.DWG	
MARK	DATE	ITEM	REVISIONS
SHEET NO. 6 of 6			