



OC PUBLIC WORKS DEPARTMENT  
JAMES TREADAWAY, DIRECTOR OF PUBLIC WORKS  
KEVIN HILLS, COUNTY SURVEYOR



DANA POINT

SELVA STORM DRAIN

FOUND CGPS "TRAK"  
N: 2171992.61  
E: 6088761.20  
THIS IS A CONTINUOUS GPS STATION  
(CGPS) AND IS PART OF THE CALIFORNIA  
SPATIAL REFERENCE NETWORK (CSRN)

BASIS OF BEARINGS  
N60°31'32.71"W 49,266.81'

FOUND CGPS "SBCC"  
N: 2147751.75 E: 6131651.74  
THIS IS A CONTINUOUS GPS STATION (CGPS)  
AND IS PART OF THE CALIFORNIA SPATIAL  
REFERENCE NETWORK (CSRN)

BASIS OF BEARINGS

THE BASIS OF BEARINGS FOR THIS SURVEY IS BASED ON THE CALIFORNIA COORDINATE SYSTEM (CCS83), ZONE VI, NAD 83, OCS (2017.50) EPOCH ADJUSTMENT, AS DETERMINED LOCALLY BY A LINE BETWEEN CONTINUOUS GLOBAL POSITIONING STATIONS CGPS STATIONS (SBCC) AND (TRAK) BEING NORTH 60°31'32.71" WEST AS DERIVED FROM THE COORDINATES PUBLISHED BY THE CALIFORNIA SPATIAL REFERENCE CENTER (CSRN) ALONG WITH DATA SHEETS ON FILE IN THE OFFICE OF ORANGE COUNTY SURVEYOR.

HORIZONTAL DATUM

COORDINATES SHOWN ARE BASED ON THE CALIFORNIA COORDINATE SYSTEM (CCS83), ZONE VI, NAD 83, OCS (2017.50) EPOCH ADJUSTMENT.

ALL DISTANCES SHOWN ARE GRID, UNLESS OTHERWISE NOTED. TO OBTAIN GROUND DISTANCES MULTIPLY GRID BY A COMBINED FACTOR OF 1.00004027.

THIS COMBINATION FACTOR WAS HELD AT: CP # 2003  
N: 2117493.93 E: 6114161.74 EL: 58.09

ALL DISTANCES ARE BASED ON THE U.S. SURVEY FOOT.

VERTICAL DATUM

NAVD 1988

BENCHMARK: CALIFORNIA SPATIAL REFERENCE SYSTEM (CSRS) CONTINUOUSLY OPERATING GLOBAL POSITIONING STATION (CGPS) "TRAK"

ELEVATION (ORTHOMETRIC HEIGHT) 495.179 FT 150.931 M

NOTES

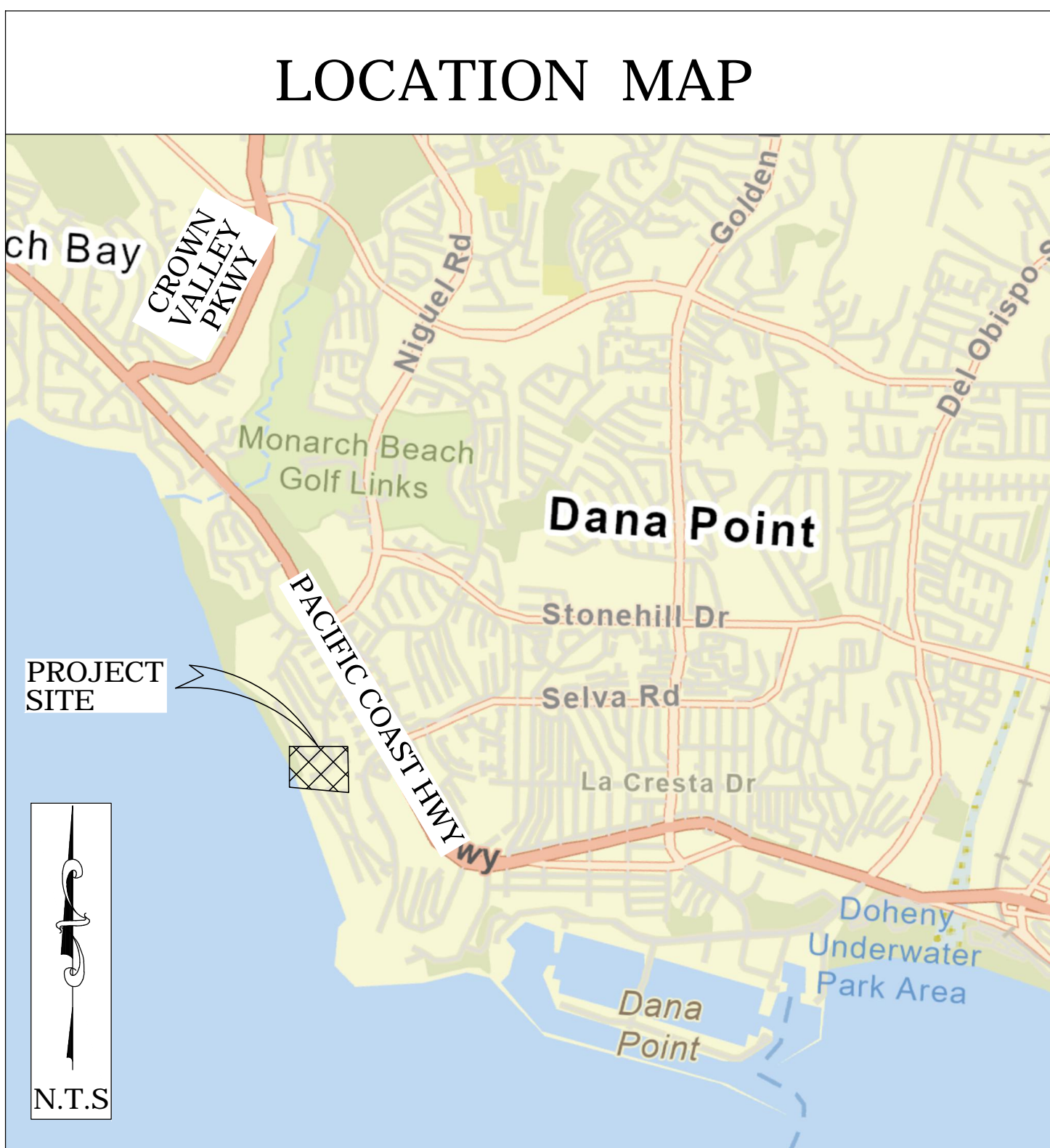
THE SURVEY INFORMATION SHOWN HEREON IS TO BE USED FOR TOPOGRAPHIC RELATIONSHIPS ONLY AND IS NOT INTENDED FOR LAND ACQUISITION OR BOUNDARY PURPOSES.

SHEET INDEX

SHEET NO.	DESCRIPTION
SHEET 1	TITLE SHEET
SHEETS 2	BOUNDARY MAP
SHEETS 3	TOPOGRAPHIC MAP

PURPOSE OF SURVEY

THE PURPOSE OF THE SURVEY IS TO PROVIDE A TOPOGRAPHIC MAP TO GEOTECHNICAL ENGINEERS FOR STABILIZATION OF COMPROMISED HILLSIDE.



SENIOR LAND SURVEYOR'S CERTIFICATE:

THIS MAP CORRECTLY REPRESENTS A SURVEY MADE BY ME OR UNDER MY DIRECTION IN CONFORMANCE WITH REQUIREMENTS OF THE PROFESSIONAL LAND SURVEYORS' ACT; THIS 4 DAY OF MAY, 2023.

Docusigned by:

MICHAEL KUBISTY, PLS. SENIOR LAND SURVEYOR



SENIOR LAND SURVEYOR'S CERTIFICATE:

THIS MAP CORRECTLY REPRESENTS A SURVEY MADE BY ME OR UNDER MY DIRECTION IN CONFORMANCE WITH REQUIREMENTS OF THE PROFESSIONAL LAND SURVEYORS' ACT; THIS 4 DAY OF MAY, 2023.

Docusigned by:

JESOM MORENO, PLS. SENIOR LAND SURVEYOR



TOPOGRAPHIC MAPPING PROJECT



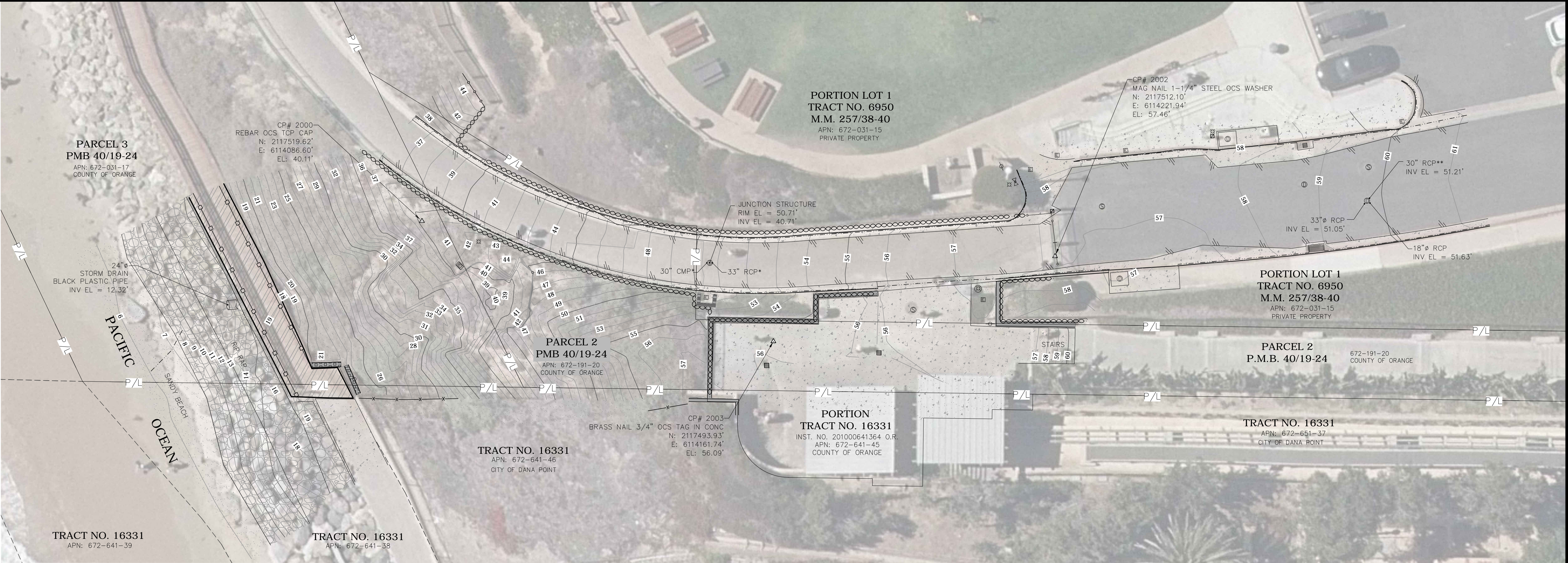
CP #2003  
SET 3/4" BRASS TAG STAMPED  
"OCS" FLUSH IN CONCRETE  
N: 2117493.93  
E: 6114161.74  
EL = 56.09'

N88°50'20.18"E  
248.32'

CP #2001  
SET 1 1/4" STAINLESS STEEL TAG  
STAMPED "ORANGE COUNTY SURVEYOR CP"  
FLUSH IN CONCRETE  
N: 2117498.96  
E: 6114410.01  
EL = 84.06'

				COUNTY OF ORANGE OC PUBLIC WORKS OC SURVEY/FIELD SERVICES/BOUNDARY ANALYSIS & MAPPING	
				DANA POINT SELVA STORM DRAIN	
				TITLE SHEET	
				PROJECT LIMITS: PORTIONS OF PARCELS 2, & 3 OF PARCEL MAP BOOK 40/19-24 W/ly THE PACIFIC OCEAN.	
1	08-29-24	ADDED BOUNDARY TO EXISTING TOPO	DATE OF SURVEY: 04/11/2023		SHEET NO.  1 of 3
			MAPPING		
			OFFICE CHECK		
			FIELD CHECK		
MARK	DATE	ITEM	SCALE: N.T.S.	W.O. #EXW0005C	FILE # 2223PW-PM005
REVISIONS			FILE: SELVA STORM DRAIN_TOPO_2023.DWG		





LEGEND

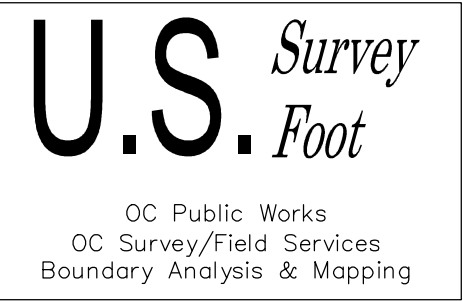
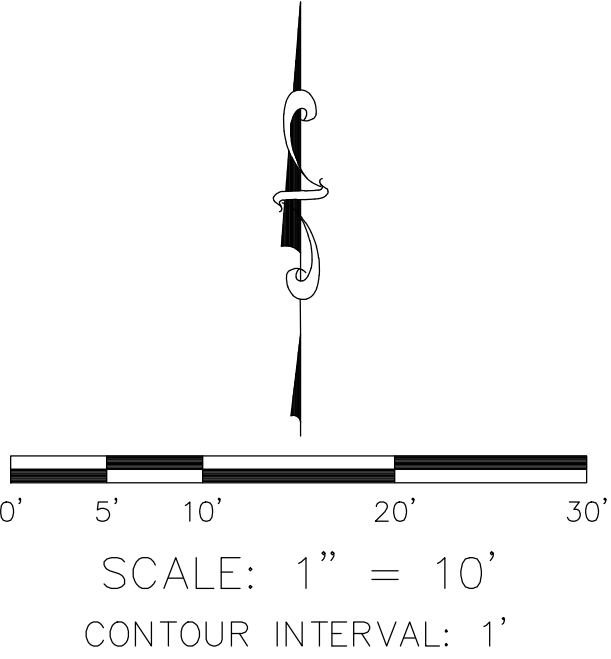
SYMBOL		LINE PATTERN KEY		AREA PATTERN KEY	
	Control Point		Concrete Wall		Concrete
	Drop Inlet		Block Wall		Dirt
	Electrical Tower		Edge of Concrete		Rip Rap
	Gate, Double		Edge of Asphalt Pavement		Wood
	Gate, Single		Fence Chainlink		
	Grate Inlet		Fence Wood		
	Light Pole, Single		Fence Wrought Iron		
	Manhole Electrical		Flowline		
	Manhole Sewer		Property Line		
	Manhole Storm Drain		Retaining Wall		
	Post				
	Pull Box Electrical				
	Sidewalk Culvert				
	Sign Post				
	Valve Irrigation				
		ABBREVIATION			
		CP	Control Point		
		CMP	Corrugated Metal Pipe		
		EL	Elevation		
		FD	Found		
		INV	Invert		
		INTS.	INSTRUMENT		
		PVC	Polyvinyl Chloride		
		RCP	Reinforced Concrete Pipe		

NOTES

THE SURVEY INFORMATION SHOWN HEREON IS TO BE USED FOR TOPOGRAPHIC RELATIONSHIPS ONLY AND IS NOT INTENDED FOR LAND ACQUISITION OR BOUNDARY PURPOSES.

ALL PARCEL LINES SHOWN AS DASHED LINEWORK HEREON ARE FOR GRAPHICAL REPRESENTATION ONLY. NO BOUNDARY SURVEY WAS PERFORMED AT THIS TIME.

\* DIAMETERS PER NIGUEL SHORES IMPROVEMENT PLAN FOR TRACT NO. 6950 PREPARED BY VTN, 2301 CAMPUS DRIVE, IRVINE, CALIFORNIA, APPROVED ON 07-09-1969



			COUNTY OF ORANGE OC PUBLIC WORKS OC SURVEY/FIELD SERVICES/BOUNDARY ANALYSIS & MAPPING			
			DANA POINT SELVA STORM DRAIN			
			TOPOGRAPHIC MAP			
			PROJECT LIMITS: PORTIONS OF PARCELS 2, & 3 OF PARCEL MAP BOOK 40/19-24 W/LY THE PACIFIC OCEAN			
			DATE OF SURVEY: 04/11/2023		BY: J. RUSSO & CREW	
MAPPING		BY: M. KUBISTY, PLS				
OFFICE CHECK		BY: J. MORENO, PLS				
FIELD CHECK		BY: J. RUSSO & CREW				
SCALE: 1"=10'		W.O. #EXW0005C FILE #2223PW-PM005 FILE: SELVA STORM_DRAIN_TOPO_2023.DWG				
1	08-29-24	ADDED BOUNDARY TO EXISTING TOPO				
MARK	DATE	ITEM	REVISIONS			