



OC PUBLIC WORKS DEPARTMENT
JAMES TREADAWAY, DIRECTOR OF PUBLIC WORKS
KEVIN HILLS, COUNTY SURVEYOR



DANA POINT
SELVA STORM DRAIN

FOUND CGPS "TRAK"
N: 2171992.61
E: 6088761.20
THIS IS A CONTINUOUS GPS STATION
(CGPS) AND IS PART OF THE CALIFORNIA
SPATIAL REFERENCE NETWORK (CSRN)

BASIS OF BEARINGS
N60°31'32.71"W 49,266.81'

FOUND CGPS "SBCC"
N: 2147751.75 E: 6131651.74
THIS IS A CONTINUOUS GPS STATION (CGPS)
AND IS PART OF THE CALIFORNIA SPATIAL
REFERENCE NETWORK (CSRN)

BASIS OF BEARINGS

THE BASIS OF BEARINGS FOR THIS SURVEY IS BASED ON THE CALIFORNIA COORDINATE SYSTEM (CCS83), ZONE VI, NAD 83, OCS (2017.50) EPOCH ADJUSTMENT, AS DETERMINED LOCALLY BY A LINE BETWEEN CONTINUOUS GLOBAL POSITIONING STATIONS CGPS STATIONS (SBCC) AND (TRAK) BEING NORTH 60°31'32.71" WEST AS DERIVED FROM THE COORDINATES PUBLISHED BY THE CALIFORNIA SPATIAL REFERENCE CENTER (CSRNC) ALONG WITH DATA SHEETS ON FILE IN THE OFFICE OF ORANGE COUNTY SURVEYOR.

HORIZONTAL DATUM

COORDINATES SHOWN ARE BASED ON THE CALIFORNIA COORDINATE SYSTEM (CCS83), ZONE VI, NAD 83, OCS (2017.50) EPOCH ADJUSTMENT.

ALL DISTANCES SHOWN ARE GRID, UNLESS OTHERWISE NOTED. TO OBTAIN GROUND DISTANCES MULTIPLY GRID BY A COMBINED FACTOR OF 1.00004027.

THIS COMBINATION FACTOR WAS HELD AT: CP# 2003
N: 2117493.93 E: 6114161.74 EL: 58.09

ALL DISTANCES ARE BASED ON THE U.S. SURVEY FOOT.

VERTICAL DATUM

NADV88

ELEVATIONS ON PROJECT CONTROL POINTS 2001 & 2003 SHOWN HEREON WERE DERIVED FROM STATIC GNSS MEASUREMENTS USING CGPS STATION "TRAK" AND HOLDING A GEOD 18 HEIGHT OF -113.798 WITH A CCS83, NAD 83, ZONE VI, 2017.50 EPOCH ELLIPSOID HEIGHT OF 381.382', AS SHOWN ON HORIZONTAL CONTROL DATA SHEET NAMED "TRAK", ON FILE IN THE OFFICE OF THE ORANGE COUNTY SURVEYOR.

NOTES

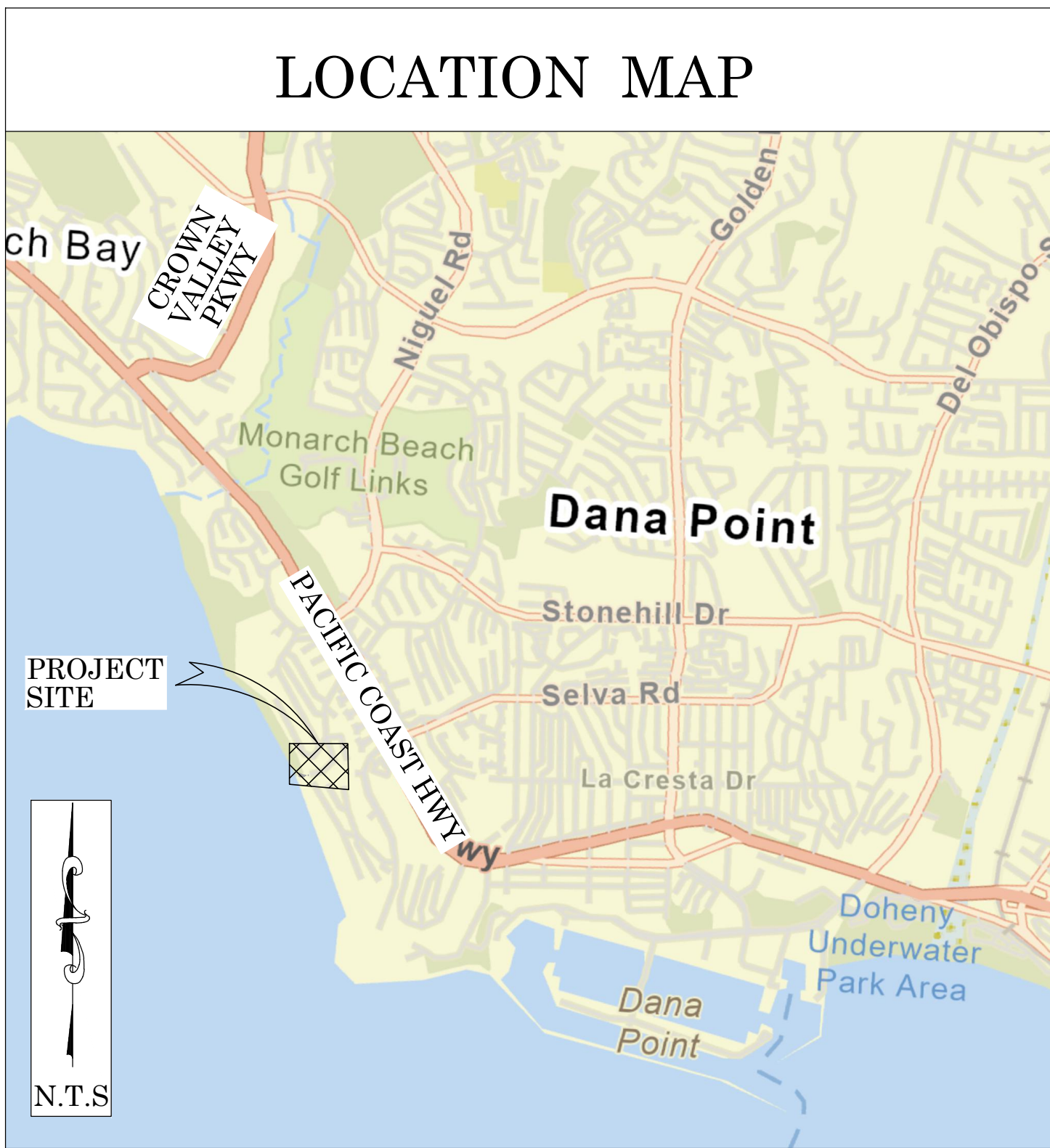
THE SURVEY INFORMATION SHOWN HEREON IS TO BE USED FOR TOPOGRAPHIC RELATIONSHIPS ONLY AND IS NOT INTENDED FOR LAND ACQUISITION OR BOUNDARY PURPOSES.

SHEET INDEX

SHEET	NO.	DESCRIPTION
1	TITLE SHEET	
2	TOPOGRAPHIC MAP	

PURPOSE OF SURVEY

THE PURPOSE OF THE SURVEY IS TO PROVIDE A TOPOGRAPHIC MAP TO GEOTECHNICAL ENGINEERS FOR STABILIZATION OF COMPROMISED HILLSIDE.



SENIOR LAND SURVEYOR'S CERTIFICATE:

THIS MAP CORRECTLY REPRESENTS A SURVEY MADE BY ME OR UNDER MY DIRECTION IN CONFORMANCE WITH REQUIREMENTS OF THE PROFESSIONAL LAND SURVEYORS' ACT; THIS 4 DAY OF MAY, 2023.

MICHAEL KUBISTY, PLS. SENIOR LAND SURVEYOR



SENIOR LAND SURVEYOR'S CERTIFICATE:

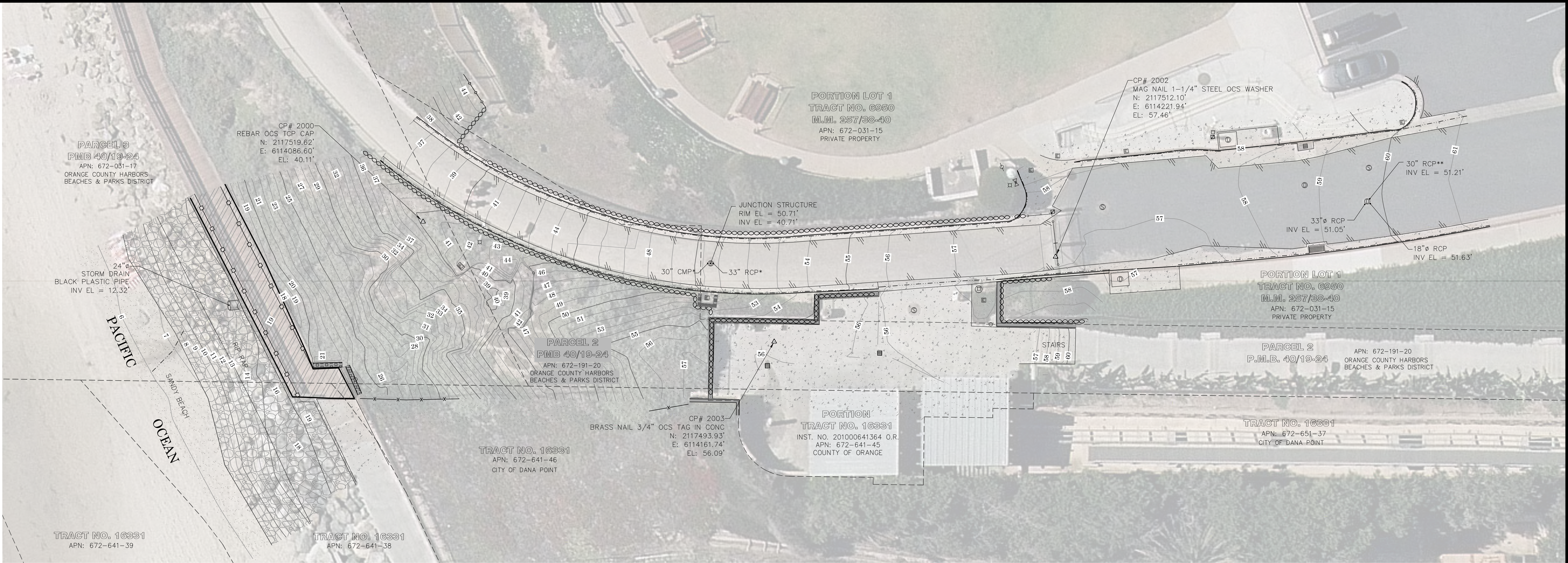
THIS MAP HAS BEEN EXAMINED IN ACCORDANCE WITH PROFESSIONAL LAND SURVEYORS' ACT; THIS 4 DAY OF MAY, 2023.

HANNA AFTIM, PLS. SENIOR LAND SURVEYOR



TOPOGRAPHIC MAPPING PROJECT

			COUNTY OF ORANGE OC PUBLIC WORKS OC SURVEY/FIELD SERVICES/BOUNDARY ANALYSIS & MAPPING		
			DANA POINT SELVA STORM DRAIN		
			TITLE SHEET		
			PROJECT LIMITS: SOUTHWESTERLY PROLONGATION OF NIGUEL SHORES DRIVE AND THE PACIFIC OCEAN.		
			DATE OF SURVEY: 04/11/2023	BY: J. RUSSO & CREW	SHEET NO. 1 of 2
			MAPPING	BY: S. ROBATI	
			OFFICE CHECK	BY: M. KUBISTY, PLS	
			FIELD CHECK	BY: J. RUSSO & CREW	
MARK	DATE	ITEM	SCALE: N.T.S.	W.O. #EXW0005C	FILE #2223PW-PM005
		REVISIONS	FILE: SELVA_STORM_DRAIN_TOPG_2023.DWG		



LEGEND

SYMBOL	LINE PATTERN KEY	AREA PATTERN KEY

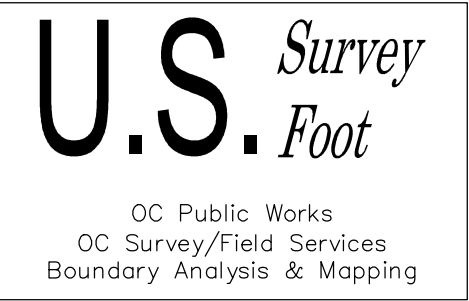
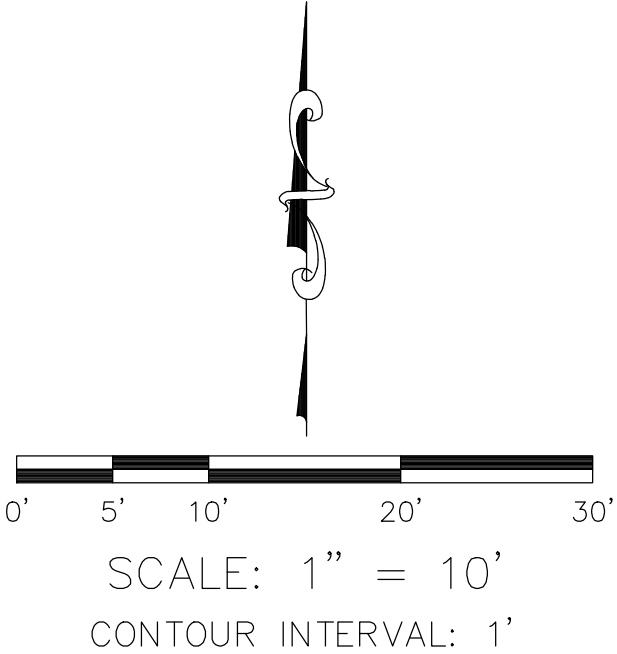
ABBREVIATION	
CP	Control Point
CMP	Corrugated Metal Pipe
EL	Elevation
FD	Found
INV	Invert
INTS.	INSTRUMENT
PVC	Polyvinyl Chloride
RCP	Reinforced Concrete Pipe

NOTES

THE SURVEY INFORMATION SHOWN HEREON IS TO BE USED FOR TOPOGRAPHIC RELATIONSHIPS ONLY AND IS NOT INTENDED FOR LAND ACQUISITION OR BOUNDARY PURPOSES.

ALL PARCEL LINES SHOWN AS DASHED LINEWORK HEREON ARE FOR GRAPHICAL REPRESENTATION ONLY. NO BOUNDARY SURVEY WAS PERFORMED AT THIS TIME.

* DIAMETERS PER NIGUEL SHORES IMPROVEMENT PLAN FOR TRACT NO. 6950 PREPARED BY VTN, 2301 CAMPUS DRIVE, IRVINE, CALIFORNIA, APPROVED ON 07-09-1969



			COUNTY OF ORANGE OC PUBLIC WORKS OC SURVEY/FIELD SERVICES/BOUNDARY ANALYSIS & MAPPING		
			DANA POINT SELVA STORM DRAIN		
			TOPOGRAPHIC MAP		
			PROJECT LIMITS: SOUTHWESTERLY PROLONGATION OF NIGUEL SHORES DRIVE AND THE PACIFIC OCEAN		
			DATE OF SURVEY: 04/11/2023	BY: J. RUSSO & CREW	SHEET NO. 2 of 2
			MAPPING	BY: S. ROBATI	
			OFFICE CHECK	BY: M. KUBISTY, PLS	
			FIELD CHECK	BY: J. RUSSO & CREW	
MARK	DATE	ITEM	SCALE: 1"=10'	W.O. #EXW0005C	FILE #2223PW-PM005
REVISIONS			FILE: SELVA_STORM_DRAIN_TOPO_2023.DWG		