



OC PUBLIC WORKS DEPARTMENT

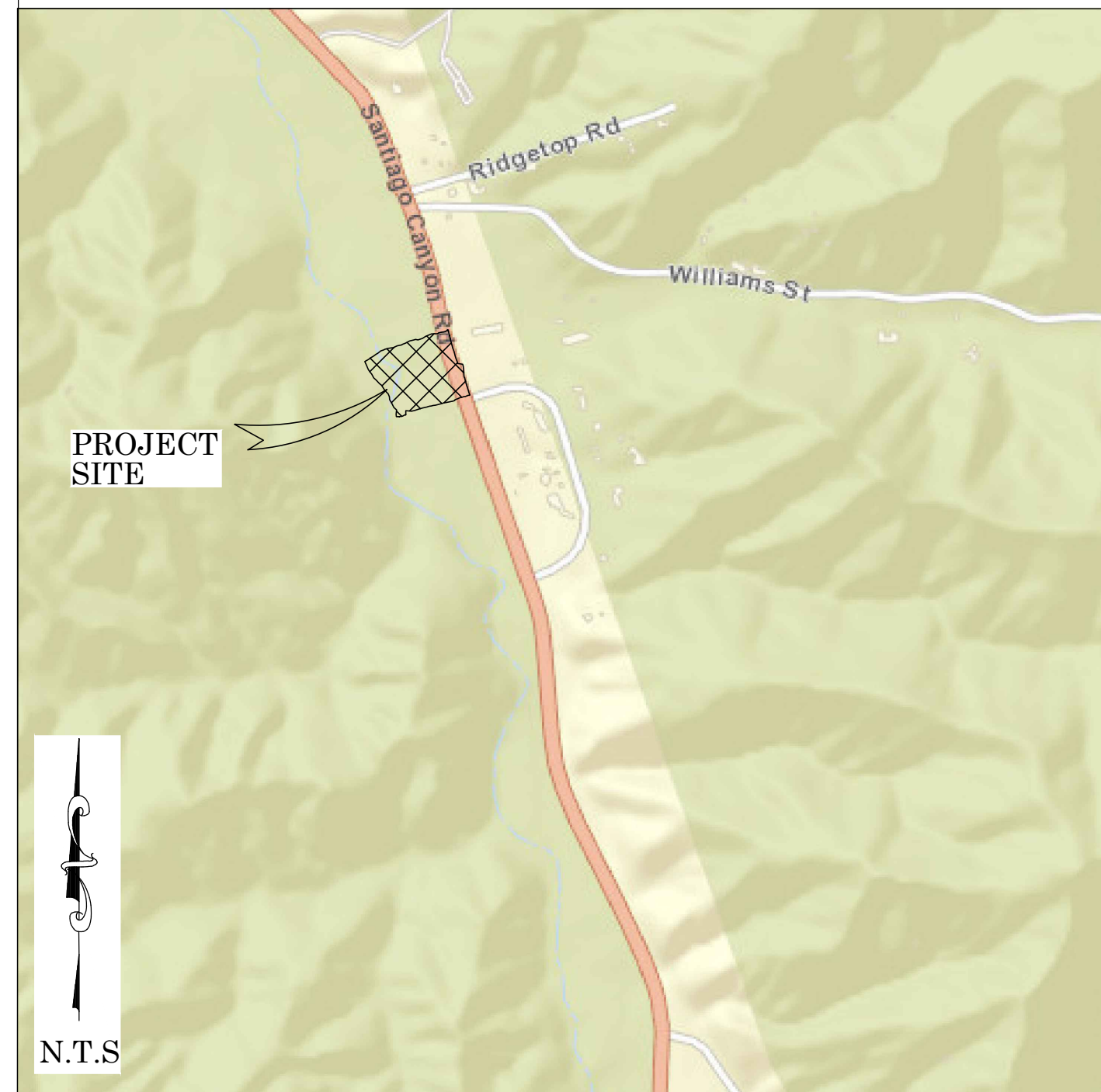
JAMES TREADAWAY, DIRECTOR OF PUBLIC WORKS

KEVIN HILLS, COUNTY SURVEYOR

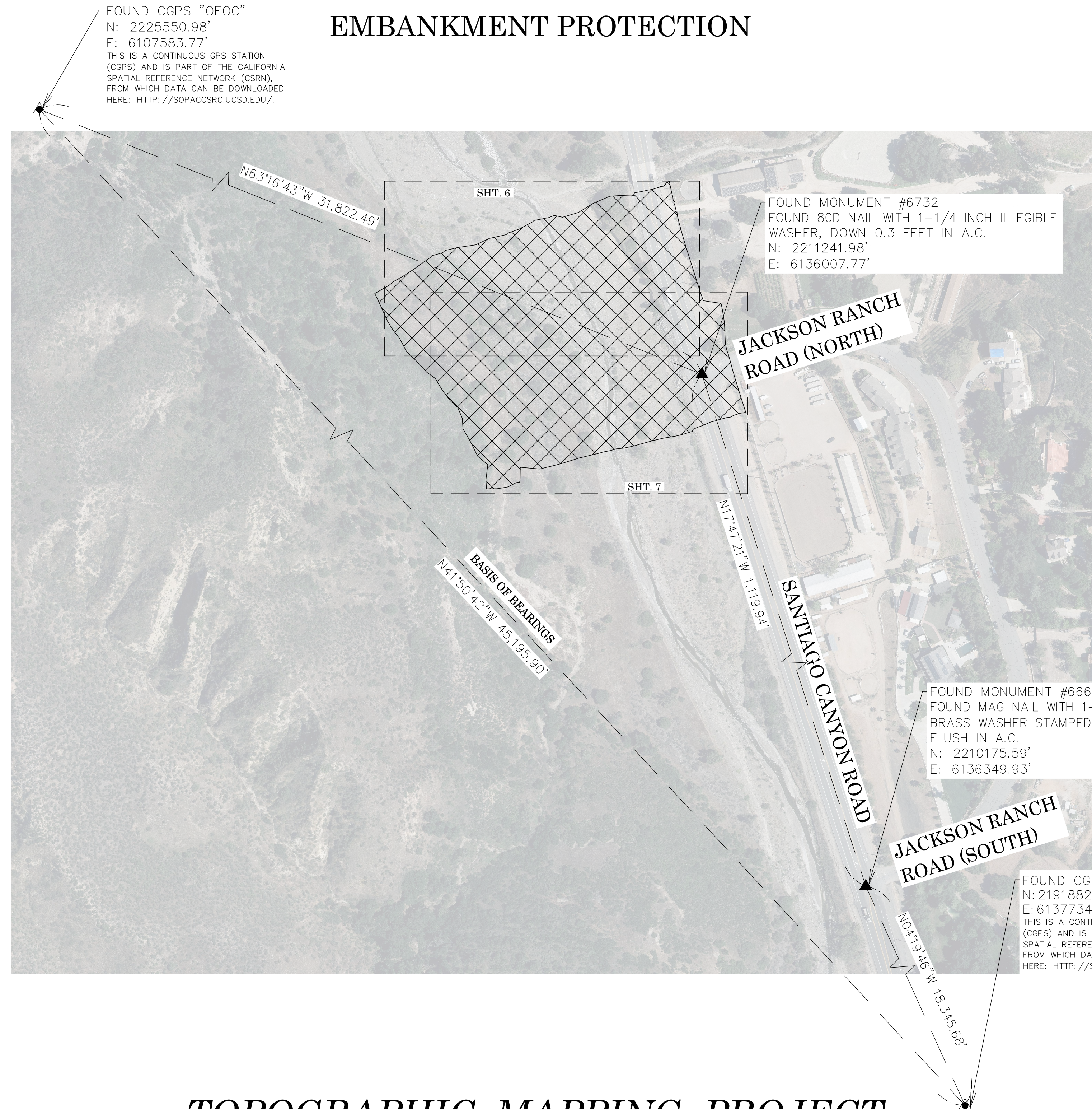
SANTIAGO CANYON ROAD



LOCATION MAP



EMBANKMENT PROTECTION



BASIS OF BEARINGS

THE BASIS OF BEARINGS FOR THIS SURVEY IS BASED ON THE CALIFORNIA COORDINATE SYSTEM (CCS83), ZONE VI, NAD 83, OCS (2017.50) EPOCH ADJUSTMENT, AS DETERMINED LOCALLY BY A LINE BETWEEN CONTINUOUS GLOBAL POSITIONING STATIONS CGPS STATIONS (WHYT) AND (OEOC) BEING NORTH 41°50'42" WEST AS DERIVED FROM THE COORDINATES PUBLISHED BY THE CALIFORNIA SPATIAL REFERENCE CENTER (CSRC) ALONG WITH DATA SHEETS ON FILE IN THE OFFICE OF THE ORANGE COUNTY SURVEYOR.

HORIZONTAL DATUM

COORDINATES SHOWN ARE BASED ON THE CALIFORNIA COORDINATE SYSTEM (CCS83), ZONE VI, NAD 83, OCS (2017.50) EPOCH ADJUSTMENT.

ALL DISTANCES SHOWN ARE GRID, UNLESS OTHERWISE NOTED. TO OBTAIN GROUND DISTANCES MULTIPLY GRID BY A COMBINED FACTOR OF 1.00007140.

THIS COMBINATION FACTOR WAS HELD AT FOUND MONUMENT #6732
N: 2211241.98' E: 6136007.77' EL: 1133.96'

ALL DISTANCES ARE BASED ON THE U.S. SURVEY FOOT.

VERTICAL DATUM

O.C.S. BM. 3D-105-71 ELEV. = 1126.663' YEAR LEVELED: 2017
NAVD 1988 (O.C.S. 1995 ADJUSTMENT)

DESCRIPTION: FOUND 3 3/4" OCS ALUMINUM BENCHMARK DISK STAMPED "3D-105-71", SET IN THE SOUTHWESTERLY CORNER OF A CONCRETE BOX CULVERT. MONUMENT IS LOCATED ALONG THE SOUTHWESTERLY SIDE OF SANTIAGO CANYON ROAD, 0.75 MILES NORTHEASTERLY OF THE CENTERLINE OF MODJESKA CANYON ROAD, 24 FT. SOUTHEASTERLY OF GUY POLE (1837288E) AND 38.3 FT. SOUTHWESTERLY OF THE CENTERLINE OF SANTIAGO CANYON ROAD. MONUMENT IS SET 10 BELOW THE SURFACE OF THE ROAD.

NOTES

THE SURVEY INFORMATION SHOWN HEREON IS TO BE USED FOR TOPOGRAPHIC RELATIONSHIPS ONLY AND IS NOT INTENDED FOR LAND ACQUISITION OR BOUNDARY PURPOSES.

SHEET INDEX

SHEET	NO.	DESCRIPTION
1		TITLE SHEET
2-5		CENTERLINE ESTABLISHMENT
6-7		TOPOGRAPHIC MAP

PURPOSE OF SURVEY

THE PURPOSE OF THE SURVEY IS TO PROVIDE A TOPOGRAPHIC MAP AND RIGHT OF WAY ESTABLISHMENT FOR THIS PORTION OF THE SANTIAGO CANYON ROAD

SENIOR LAND SURVEYOR'S CERTIFICATE:

THIS MAP CORRECTLY REPRESENTS A SURVEY MADE BY ME OR UNDER MY DIRECTION IN CONFORMANCE WITH REQUIREMENTS OF THE PROFESSIONAL LAND SURVEYOR'S ACT; THIS 17 DAY OF MARCH, 2022.

ELLIOTT MEDINA, PLS. SENIOR LAND SURVEYOR



DEPUTY COUNTY SURVEYOR'S STATEMENT:

THIS MAP HAS BEEN EXAMINED IN ACCORDANCE WITH THE PROFESSIONAL LAND SURVEYOR'S ACT; THIS 17 DAY OF MARCH, 2022.

WADE WEAVER, PLS. DEPUTY COUNTY SURVEYOR



TOPOGRAPHIC MAPPING PROJECT

COUNTY OF ORANGE OC PUBLIC WORKS OC SURVEY/FIELD SERVICES/BOUNDARY ANALYSIS & MAPPING			
SANTIAGO CANYON ROAD EMBANKMENT PROTECTION			
TITLE SHEET			
PROJECT LIMITS: FROM : JACKSON RANCH ROAD SOUTH			
TO: 300' NORTH			
DATE OF SURVEY: 11/23/2021	BY: P. MAQUIRE	SHEET NO. 1 of 7	
MAPPING	BY: F. DADASHI, PLS		
OFFICE CHECK	BY: E. MEDINA, PLS	1 of 7	
FIELD CHECK	BY: P. MAQUIRE		
SCALE: N.T.S.	W.O. #ER19300	FILE #2021PW-ENG0006	FILE: SANTIAGO CANYON ROAD EMBANKMENT_TOPO_2021.DWG
REVISIONS			

ESTABLISHMENT NOTES

- [A](#) ESTABLISHED THE CENTERLINE OF SANTIAGO CANYON ROAD BY HOLDING A LINE BETWEEN MONUMENTS [1](#) AND [2](#)
- [B](#) ESTABLISHED THE CENTERLINE OF SANTIAGO CANYON ROAD BY HOLDING A LINE BETWEEN MONUMENTS [2](#) AND [8](#)
- [C](#) ESTABLISHED THE CENTERLINE OF SANTIAGO CANYON ROAD BY HOLDING A LINE BETWEEN MONUMENTS [8](#) AND [9](#)
- [D](#) ESTABLISHED THE CENTERLINE OF JACKSON RANCH ROAD (SOUTH) BY HOLDING A LINE BETWEEN MONUMENTS [3](#) AND [6](#)
- [E](#) ESTABLISHED THE CENTERLINE OF JACKSON RANCH ROAD (NORTH) BY HOLDING A LINE BETWEEN MONUMENTS [4](#) AND [5](#)
- [F](#) ESTABLISHED THE CENTERLINE OF SANTIAGO CANYON ROAD BY HOLDING RECORD RADIUS OF 1200.00 FEET PER R1 AND TANGENT TO LINE ESTABLISHMENTS [A](#) AND [B](#)
- [G](#) ESTABLISHED THE CENTERLINE OF SANTIAGO CANYON ROAD BY HOLDING RECORD RADIUS OF 1200.00 FEET PER R1 AND TANGENT TO LINE ESTABLISHMENTS [B](#) AND [C](#)
- [H](#) ESTABLISHED THE CENTERLINE INTERSECTION OF SANTIAGO CANYON ROAD AND JACKSON RANCH ROAD (NORTH) BY INTERSECTION OF LINE ESTABLISHMENTS [A](#) AND [E](#)
- [I](#) ESTABLISHED THE CENTERLINE P.I. 17 PER R8 BY HOLDING A RECORD DISTANCE OF 149.87 FEET PER R8 FROM MONUMENT [1](#) ALONG SE'LY PROLONGATION OF LINE ESTABLISHMENT [A](#)
- [J](#) ESTABLISHED THE POINT OF BEGINNING OF PARCEL 239 PER R7 BY A HOLDING RECORD DISTANCE OF 388.44 FEET PER R7 FROM ESTABLISHMENT [I](#) NW'LY ALONG LINE ESTABLISHMENT [A](#)
- [K](#) ESTABLISHED POINT "A" OF R7 BY HOLDING A RECORD DISTANCE OF 900.00 FEET PER R7 FROM ESTABLISHMENT [I](#) NW'LY ALONG LINE ESTABLISHMENT [A](#)
- [L](#) ESTABLISHED THE TRUE POINT OF BEGINNING OF PARCEL 239.1 PER R7 BY HOLDING RECORD DISTANCE AND ANGLE PER R7 SW'LY FROM ESTABLISHMENT [G](#)
- [M](#) ESTABLISHED PARCEL 239.1 PER R7 BY HOLDING RECORD COURSE INFORMATION PER R7 NW'LY FROM ESTABLISHMENT [G](#)
- [N](#) ESTABLISHED THE TRUE POINT OF BEGINNING OF PARCEL 239.2 PER R7 BY HOLDING RECORD DISTANCE AND ANGLE PER R7 FROM E.C. OF CURVE ESTABLISHMENT [F](#)
- [O](#) ESTABLISHED PARCEL 239.2 BY HOLDING RECORD COURSE INFORMATION PER R7 FROM ESTABLISHMENT [I](#)
- [P](#) ESTABLISHED THE NE'LY RIGHT OF WAY LINE OF SANTIAGO CANYON BY HOLDING LINE AND CURVE PARALLEL AND CONCENTRIC WITH AND RECORD DISTANCE OF 72.00 FEET PER R1 NE'LY OF LINE AND CURVE ESTABLISHMENTS [A](#), [B](#), [C](#), [I](#), [G](#) AND [Q](#)
- [Q](#) ESTABLISHED THE SW'LY RIGHT OF WAY LINE OF SANTIAGO CANYON BY HOLDING LINE PARALLEL WITH AND RECORD DISTANCE OF 30.00 FEET PER R7 SW'LY OF LINE ESTABLISHMENT [A](#)
- [R](#) ESTABLISHED THE SW'LY RIGHT OF WAY LINE OF SANTIAGO CANYON BY HOLDING LINE AND CURVE PARALLEL AND CONCENTRIC WITH AND RECORD DISTANCE OF 40.00 FEET PER R7 SW'LY OF LINE AND CURVE ESTABLISHMENTS [A](#), [B](#), [C](#), [I](#) AND [Q](#)
- [S](#) ESTABLISHED THE NW'LY RIGHT OF WAY LINE OF JACKSON RANCH ROAD (NORTH) BY HOLDING A LINE PARALLEL WITH AND RECORD DISTANCE OF 25.00 FEET PER R1 NW'LY OF LINE ESTABLISHMENT [B](#)
- [T](#) ESTABLISHED THE INTERSECTION OF NE'LY RIGHT OF WAY LINE OF SANTIAGO CANYON ROAD WITH NE'LY RIGHT OF WAY LINE OF JACKSON RANCH ROAD (NORTH) BY INTERSECTION OF LINE ESTABLISHMENTS [S](#) AND [P](#)
- [U](#) ESTABLISHED EASEMENT [1](#) BY HOLDING RECORD COURSE INFORMATION PER R1 FROM ESTABLISHMENT [G](#)
- [V](#) ESTABLISHED THE SE'LY RIGHT OF WAY LINE OF JACKSON RANCH ROAD (NORTH) BY HOLDING A LINE PARALLEL WITH AND RECORD DISTANCE OF 25.00 FEET PER R1 SE'LY OF LINE ESTABLISHMENT [G](#)
- [W](#) ESTABLISHED THE INTERSECTION OF NE'LY RIGHT OF WAY LINE OF SANTIAGO CANYON ROAD WITH SE'LY RIGHT OF WAY LINE OF JACKSON RANCH ROAD (NORTH) BY INTERSECTION OF LINE ESTABLISHMENTS [P](#) AND [V](#)
- [X](#) ESTABLISHED EASEMENT [1](#) BY HOLDING RECORD COURSE INFORMATION PER R1 FROM ESTABLISHMENT [G](#)
- [Y](#) ESTABLISHED THE NW'LY RIGHT OF WAY LINE OF JACKSON RANCH ROAD (SOUTH) BY HOLDING LINE PARALLEL WITH AND RECORD DISTANCE OF 25.00 FEET PER R1 NW'LY OF LINE ESTABLISHMENT [G](#)
- [Z](#) ESTABLISHED THE INTERSECTION OF NE'LY RIGHT OF WAY LINE OF SANTIAGO CANYON ROAD AND NE'LY RIGHT OF WAY LINE OF JACKSON RANCH ROAD (SOUTH) BY INTERSECTION OF LINE ESTABLISHMENTS [P](#) AND [Y](#)
- [4A](#) ESTABLISHED THE NW'LY RIGHT OF WAY LINE OF JACKSON RANCH ROAD (SOUTH) BY HOLDING A RECORD CURVE RADIUS OF 1200.00 PER R1 FROM THE NE'LY TERMINUS OF LINE ESTABLISHMENT [Y](#) AND TANGENT TO SAID LINE
- [4B](#) ESTABLISHED THE MOST S'LY CORNER OF EASEMENT [1](#) PER R1 BY INTERSECTION OF LINE ESTABLISHMENT [Y](#) AND CURVE ESTABLISHMENT [4A](#)

REFERENCE

- R1 = TRACT NO. 11233, M.M. 507/34–37
- R2 = RECORD OF SURVEY 97–1079, R.S.B. 173/1–10
- R3 = SURVEYOR MAP, S.M. 68–6
- R4 = EASEMENT DEED, BK. 11569 PG. 620 O.R.
- R5 = INSTRUMENT NO 91–315459 O.R.
- R6 = RESOLUTION OF THE BOARD OF SUPERVISORS OF ORANGE COUNTY, BK. 11189 PG.1454
- R7 = EASEMENT DEED, BK. 9063 PG. 900 O.R.
- R8 = O.C.S. ALIGNMENT NOTE A/5–7,6&8/37–67
- R9 = CORNER RECORD, C.R. 2008–1109
- R10 = GRANT DEED, 1990757741 O.R.

MONUMENT NOTES

- [1](#) FOUND PUNCHED ROUND HEAD SPIKE WITH 1– 1/4 INCH BRASS WASHER STAMPED "ORANGE COUNTY SURVEYOR RCE 6978" PER R8, DOWN 0.50 FEET BELOW IN A.C. ACCEPTED AS THE CENTERLINE E.C. OF SANTIAGO CANYON ROAD. SEE SHEET 55 OF R8
- [2](#) FOUND PUNCHED ALUMINUM DISK IN WELL MONUMENT STAMPED "ORANGE COUNTY SURVEYOR P.I. 18 6–1974" PER R8, DOWN 1.70 FEET IN A.C. ACCEPTED AS THE CENTERLINE P.I. OF SANTIAGO CANYON ROAD. SEE SHEET 56 OF R8
- [3](#) FOUND MAG NAIL WITH 1–1/2 INCH BRASS WASHER STAMPED "PLS 5137" IN LIEU OF SPIKE AND WASHER STAMPED "PLS 5137" PER R9, FLUSH IN A.C. ACCEPTED AS THE CENTERLINE INTERSECTION OF JACKSON RANCH (SOUTH) AND SANTIAGO CANYON ROAD
- [4](#) FOUND 80D NAIL WITH 1–1/4 INCH WITH ILLEGIBLE WASHER NO REFERENCE, DOWN 0.30 FEET IN A.C. ACCEPTED AS A POINT ON THE CENTERLINE OF JACKSON RANCH ROAD (NORTH), N72°12'30"E 0.04' FROM THE CENTERLINE INTERSECTION OF JACKSON RANCH ROAD (NORTH) AND SANTIAGO CANYON ROAD
- [5](#) FOUND 2–1/4 INCH DIAMETER IRON PIPE WITH 80D NAIL AND 1–1/4 INCH ILLEGIBLE WASHER, DOWN 0.25 FEET IN A.C. NO REFERENCE, ACCEPTED AS SPIKE AND WASHER STAMPED "R.C.E. 13703" PER R1, ACCEPTED AS THE CENTERLINE B.C. OF JACKSON RANCH ROAD (NORTH)
- [6](#) FOUND 80D NAIL WITH 1–1/4 INCH WITH ILLEGIBLE WASHER, DOWN 0.25 FEET IN A.C. NO REFERENCE, IN LIEU OF SPIKE AND WASHER STAMPED "R.C.E. 13703" PER R1, ACCEPTED AS THE CENTERLINE B.C. OF JACKSON RANCH ROAD (SOUTH)
- [7](#) FOUND ROUND HEAD SPIKE WITH 1–1/4 INCH BRASS WASHER STAMPED "ORANGE COUNTY SURVEYOR RCE 6978" PER R8, 0.45 FEET IN A.C. ACCEPTED AS THE CENTERLINE B.C. OF SANTIAGO CANYON ROAD. SEE SHEET 21 OF R8
- [8](#) FOUND 2–1/4 INCH ALUMINUM DISK IN WELL MONUMENT, STAMPED "ORANGE–COUNTY–SURVEYOR PI–19 6–1974" PER R8, DOWN 2.10 FEET IN A.C. ACCEPTED AS THE CENTERLINE P.I. OF SANTIAGO CANYON ROAD. SEE SHEET 21 OF R8
- [9](#) FOUND 2–1/4 INCH ALUMINUM DISK STAMPED "ORANGE–COUNTY–SURVEYOR PI–20 1974" PER R8, DOWN 0.35 FEET IN DIRT. ACCEPTED AS THE CENTERLINE P.I. OF SANTIAGO CANYON ROAD. SEE SHEET 22 OF R8

EASEMENT NOTES

- [1](#) NON EXCLUSIVE FLOOD PLAIN EASEMENT DEDICATED TO O.C.F.C.D. PER R1 FOR THE PURPOSE OF IMPOSING CERTAIN RESTRICTIONS SUBJECT TO THE CONDITIONS AND LIMITATIONS AS SHOWN ON R4
- [2](#) SLOPE AND DRAINAGE EASEMENT GRANTED TO COUNTY OF ORANGE PER R7

NOTES

ALL BOUNDARY LINES NOT SHOWN IN BOLD ARE FOR GRAPHICAL REPRESENTATION ONLY.

RECORD DISTANCES SHOWN HEREON ARE AS THEY APPEAR ON THE DOCUMENT OF RECORD. DISTANCES MAY BE EITHER GRID OR GROUND, AS PER SAID RECORD.

REFERENCE DOCUMENTS IN THE REFERENCE LEGEND ARE LIVE HYPERLINKS TO SAID DOCUMENT.

MONUMENT SYMBOLS CONTAIN LIVE HYPERLINKS TO IMAGES, IF THEY EXIST, OF RESPECTIVE MONUMENT.

BOUNDARY SHOWN HEREON IS LIMITED BASED ON SCOPE OF PROJECT. FURTHER INVESTIGATION AND ANALYSIS REQUIRED FOR AREAS BEYOND THIS SCOPE.

A FULL BOUNDARY SURVEY WAS NOT PERFORMED, THE CENTERLINE WAS ESTABLISHED AND THE R/W WAS OFFSET USING THE DIMENSION ACCORDING TO SAID RECORDS.

BASIS OF BEARINGS

THE BASIS OF BEARINGS FOR THIS SURVEY IS BASED ON THE CALIFORNIA COORDINATE SYSTEM (CCS83), ZONE VI, NAD 83, OCS (2017.50) EPOCH ADJUSTMENT, AS DETERMINED LOCALLY BY A LINE BETWEEN CONTINUOUS GLOBAL POSITIONING STATIONS CGPS STATIONS (WHYT) AND (OECC) BEING NORTH 41°50'42" WEST AS DERIVED FROM THE COORDINATES PUBLISHED BY THE CALIFORNIA SPATIAL REFERENCE CENTER (CSRC) ALONG WITH DATA SHEETS ON FILE IN THE OFFICE OF THE ORANGE COUNTY SURVEYOR.

HORIZONTAL DATUM

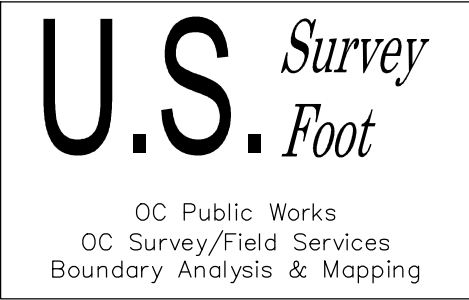
COORDINATES SHOWN ARE BASED ON THE CALIFORNIA COORDINATE SYSTEM (CCS83), ZONE VI, NAD 83, OCS (2017.50) EPOCH ADJUSTMENT.

ALL DISTANCES SHOWN ARE GRID, UNLESS OTHERWISE NOTED, TO OBTAIN GROUND DISTANCE MULTIPLY A GRID DISTANCE BY 1.00007140.

COMBINATION FACTOR WAS HELD AT FOUND MONUMENT #6732
N:2211241.98', E:6136007.77', ELEVATION= 1133.96'.

RECORD DISTANCES SHOWN HEREON ARE AS THEY APPEAR ON THE DOCUMENT OF RECORD. DISTANCES MAY BE EITHER GRID OR GROUND, AS PER SAID RECORD.

ALL DISTANCES ARE BASED ON THE U.S. SURVEY FOOT.



			COUNTY OF ORANGE OC PUBLIC WORKS OC SURVEY/FIELD SERVICES/BOUNDARY ANALYSIS & MAPPING			
			SANTIAGO CANYON ROAD EMBANKMENT PROTECTION			
			BOUNDARY MAP			
			PROJECT LIMITS: FROM : JACKSON RANCH ROAD SOUTH TO: 300' NORTH			
			DATE OF SURVEY:11/23/2021		BY:P. MAGUIRE	
			MAPPING		BY:F. DADASH, PLS	
			OFFICE CHECK		BY:E. MEDINA, PLS	
			FIELD CHECK		BY:P. MAGUIRE	
			SCALE:N/A		W.O. #ER19300	FILE # 2021PW-ENG0006
			FILE:SANTIAGO CANYON ROAD EMBANKMENT_BOUNDARY_2021.DWG			
MARK	DATE	ITEM	REVISIONS			

CENTERLINE ESTABLISHMENT MAP INDEX

SHEET 5

RIDGE TOP ROAD

WILLIAMS CANYON ROAD

SANTIAGO CANYON ROAD

PARCEL 239 (R7)

SHEET 4

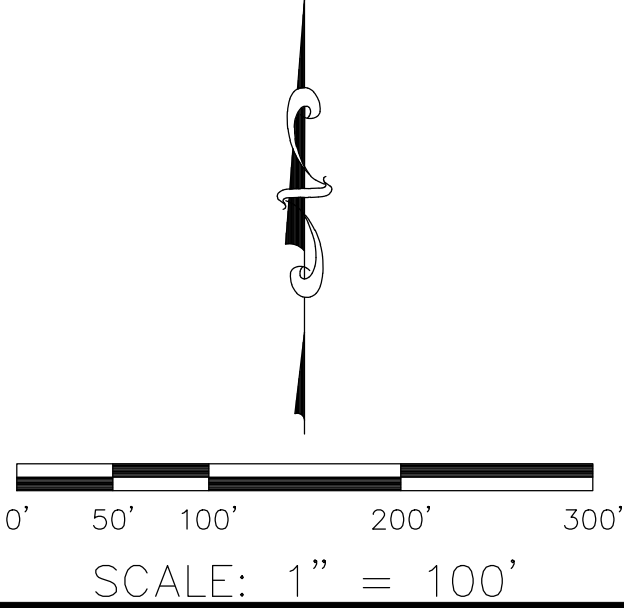
JACKSON RANCH ROAD (NORTH)

SANTIAGO CANYON ROAD
PARCEL 239 (R7)

LIMESTONE CANYON
REGIONAL PARK DEDICATED
TO COUNTY (R5)

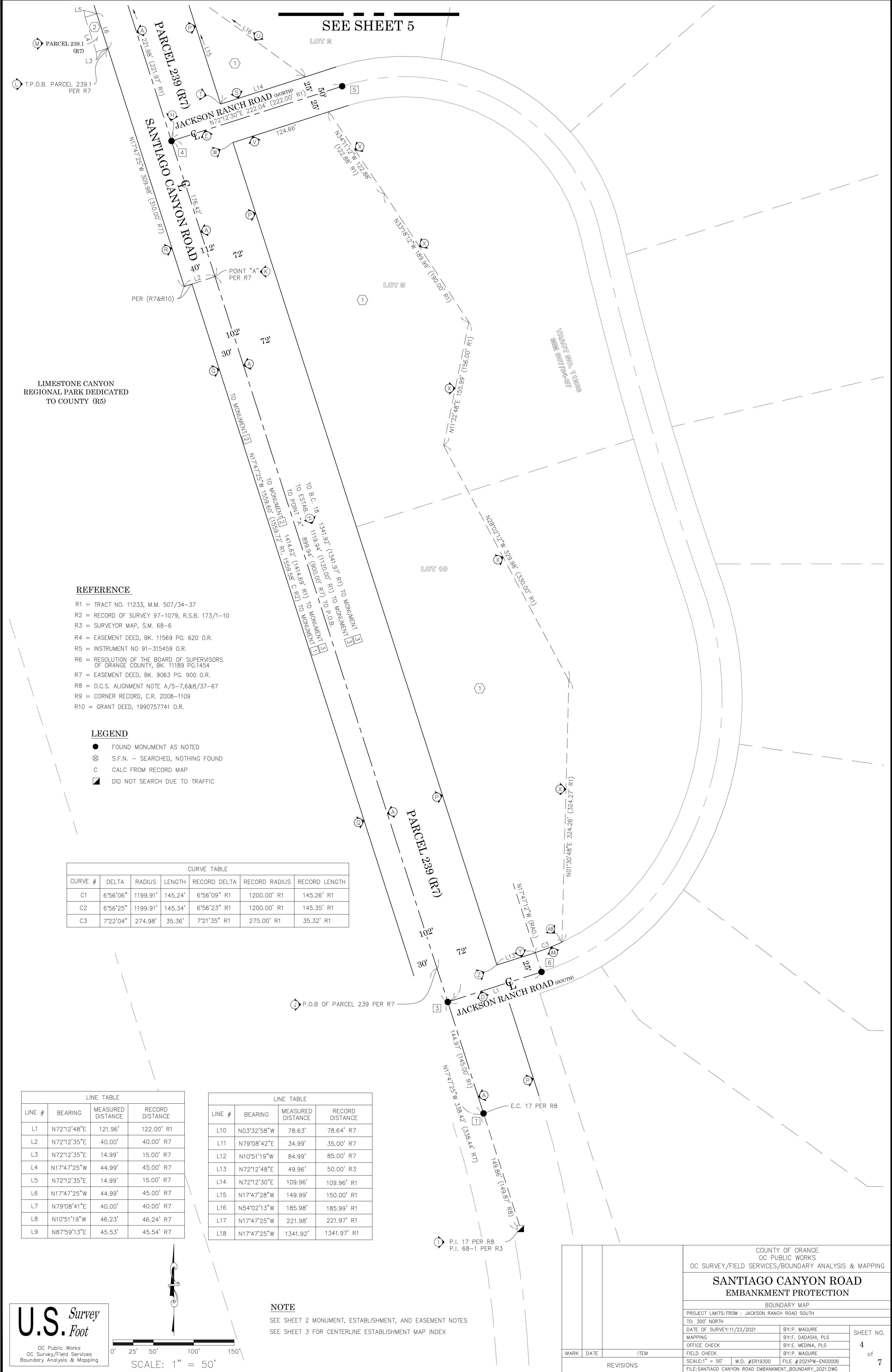
JACKSON RANCH ROAD (SOUTH)

U.S. *Survey*
Foot
OC Public Works
OC Survey/Field Services
Boundary Analysis & Mapping



			COUNTY OF ORANGE OC PUBLIC WORKS OC SURVEY/FIELD SERVICES/BOUNDARY ANALYSIS & MAPPING		
			SANTIAGO CANYON ROAD EMBANKMENT PROTECTION		
			CENTERLINE ESTABLISHMENT		
			PROJECT LIMITS: FROM : JACKSON RANCH ROAD SOUTH TO: 300' NORTH		
			DATE OF SURVEY:11/23/2021	BY:P. MAGUIRE	SHEET NO. 3 of 7
			MAPPING	BY:F. DADASH, PLS	
			OFFICE CHECK	BY:E. MEDINA, PLS	
			FIELD CHECK	BY:P. MAGUIRE	
MARK	DATE	ITEM	SCALE:1"=100'	W.O. #ER19300	FILE # 2021PW-ENG0006
		REVISIONS	FILE:SANTIAGO CANYON ROAD EMBANKMENT_BOUNDARY_2021.DWG		

SEE SHEET 5



REFERENCE

- R1 = TRACT NO. 11233, M.M. 507/34-37
R2 = RECORD OF SURVEY 97-1079, R.S.B. 173/1-10
R3 = SURVEYOR MAP, S.M. 68-6
R4 = EASEMENT DEED, BK. 11569 PG. 620 O.R.
R5 = INSTRUMENT NO 91-315459 O.R.
R6 = RESOLUTION OF THE BOARD OF SUPERVISORS OF ORANGE COUNTY, BK. 11189 PG.1454
R7 = EASEMENT DEED, BK. 9063 PG. 900 O.R.
R8 = O.C.S. ALIGNMENT NOTE A/5-7,6&8/37-67
R9 = CORNER RECORD, C.R. 2008-1109
R10 = GRANT DEED, 1990757741 O.R.

LEGEND

- FOUND MONUMENT AS NOTED
⊗ S.F.N. - SEARCHED, NOTHING FOUND
C CALC FROM RECORD MAP
■ DID NOT SEARCH DUE TO TRAFFIC

CURVE TABLE						
CURVE #	DELTA	RADIUS	LENGTH	RECORD DELTA	RECORD RADIUS	RECORD LENGTH
C1	6°56'06"	1199.91'	145.24'	6°56'09" R1	1200.00' R1	145.26' R1
C2	6°56'25"	1199.91'	145.34'	6°56'23" R1	1200.00' R1	145.35' R1
C3	7°22'04"	274.98'	35.36'	7°21'35" R1	275.00' R1	35.32' R1

LINE TABLE			
LINE #	BEARING	MEASURED DISTANCE	RECORD DISTANCE
L1	N72°12'48"E	121.96'	122.00' R1
L2	N72°12'35"E	40.00'	40.00' R7
L3	N72°12'35"E	14.99'	15.00' R7
L4	N17°47'25"W	44.99'	45.00' R7
L5	N72°12'35"E	14.99'	15.00' R7
L6	N17°47'25"W	44.99'	45.00' R7
L7	N79°08'41"E	40.00'	40.00' R7
L8	N10°51'19"W	46.23'	46.24' R7
L9	N87°59'13"E	45.53'	45.54' R7

LINE TABLE			
LINE #	BEARING	MEASURED DISTANCE	RECORD DISTANCE
L10	N03°32'58"W	78.63'	78.64' R7
L11	N79°08'42"E	34.99'	35.00' R7
L12	N10°51'19"W	84.99'	85.00' R7
L13	N72°12'48"E	49.96'	50.00' R3
L14	N72°12'30"E	109.96'	109.96' R1
L15	N17°47'28"W	149.99'	150.00' R1
L16	N54°02'13"W	185.98'	185.99' R1
L17	N17°47'25"W	221.98'	221.97' R1
L18	N17°47'25"W	1341.92'	1341.97' R1

NOTE

- SEE SHEET 2 MONUMENT, ESTABLISHMENT, AND EASEMENT NOTES
SEE SHEET 3 FOR CENTERLINE ESTABLISHMENT MAP INDEX

COUNTY OF ORANGE OC PUBLIC WORKS OC SURVEY/FIELD SERVICES/BOUNDARY ANALYSIS & MAPPING		
SANTIAGO CANYON ROAD EMBANKMENT PROTECTION		
BOUNDARY MAP PROJECT LIMITS: FROM : JACKSON RANCH ROAD SOUTH TO: 300' NORTH		
DATE OF SURVEY: 11/23/2021	BY: P. MAGUIRE	SHEET NO. 4 of 7
MAPPING	BY: F. DADASH, PLS	
OFFICE CHECK	BY: E. MEDINA, PLS	
FIELD CHECK	BY: P. MAGUIRE	
SCALE: 1" = 50'	W.O. #ER19300 FILE #2021PW-ENG0006 FILE: SANTIAGO CANYON ROAD EMBANKMENT_BOUNDARY_2021.DWG	

CURVE TABLE						
CURVE #	DELTA	RADIUS	LENGTH	RECORD DELTA	RECORD RADIUS	RECORD LENGTH
C1	6°56'06"	1199.91'	145.24'	6°56'09" R1	1200.00' R1	145.26' R1
C2	6°56'25"	1199.91'	145.34'	6°56'23" R1	1200.00' R1	145.35' R1
C3	7°22'04"	274.98'	35.36'	7°21'35" R1	275.00' R1	35.32' R1

LINE TABLE			
LINE #	BEARING	MEASURED DISTANCE	RECORD DISTANCE
L1	N72°12'48"E	121.96'	122.00' R1
L2	N72°12'35"E	40.00'	40.00' R7
L3	N72°12'35"E	14.99'	15.00' R7
L4	N17°47'25"W	44.99'	45.00' R7
L5	N72°12'35"E	14.99'	15.00' R7
L6	N17°47'25"W	44.99'	45.00' R7
L7	N79°08'41"E	40.00'	40.00' R7
L8	N10°51'19"W	46.23'	46.24' R7
L9	N87°59'13"E	45.53'	45.54' R7

LINE TABLE			
LINE #	BEARING	MEASURED DISTANCE	RECORD DISTANCE
L10	N03°32'58"W	78.63'	78.64' R7
L11	N79°08'42"E	34.99'	35.00' R7
L12	N10°51'19"W	84.99'	85.00' R7
L13	N72°12'48"E	49.96'	50.00' R3
L14	N72°12'30"E	109.96'	109.96' R1
L15	N17°47'28"W	149.99'	150.00' R1
L16	N54°02'13"W	185.98'	185.99' R1
L17	N17°47'25"W	221.98'	221.97' R1
L18	N17°47'25"W	1341.92'	1341.97' R1

REFERENCE

R1 = TRACT NO. 11233, M.M. 507/34-37
R2 = RECORD OF SURVEY 97-1079, R.S.B. 173/1-10
R3 = SURVEYOR MAP, S.M. 68-6
R4 = EASEMENT DEED, BK. 11569 PG. 620 O.R.
R5 = INSTRUMENT NO 91-315459 O.R.
R6 = RESOLUTION OF THE BOARD OF SUPERVISORS OF ORANGE COUNTY, BK. 11189 PG.1454
R7 = EASEMENT DEED, BK. 9063 PG. 900 O.R.
R8 = O.C.S. ALIGNMENT NOTE A/5-7,6&8/37-67
R9 = CORNER RECORD, C.R. 2008-1109
R10 = GRANT DEED, 1990757741 O.R.

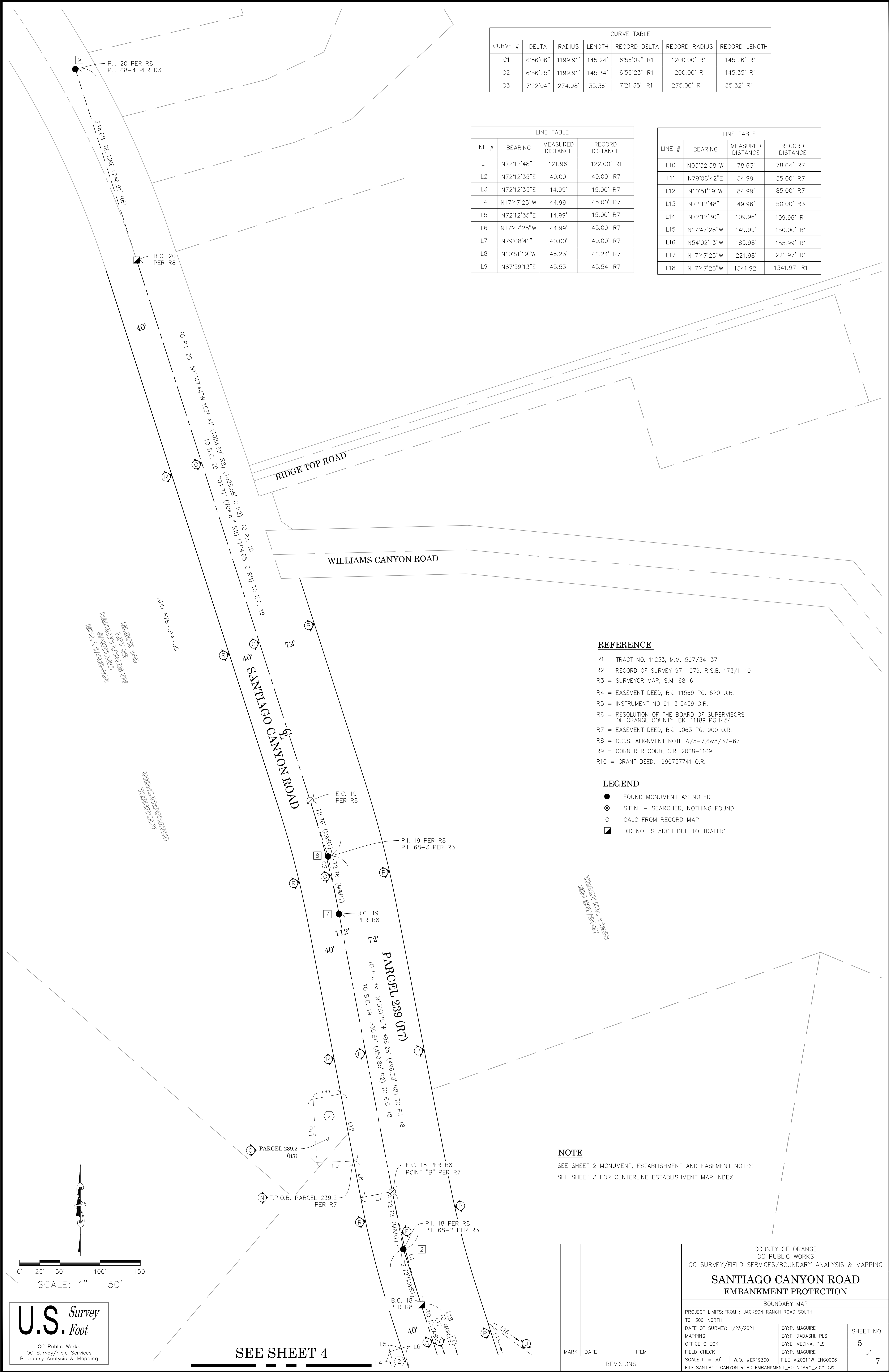
LEGEND

- FOUND MONUMENT AS NOTED
- ⊗ S.F.N. - SEARCHED, NOTHING FOUND
- C CALC FROM RECORD MAP
- ▣ DID NOT SEARCH DUE TO TRAFFIC

NOTE

SEE SHEET 2 MONUMENT, ESTABLISHMENT AND EASEMENT NOTES
SEE SHEET 3 FOR CENTERLINE ESTABLISHMENT MAP INDEX

			COUNTY OF ORANGE OC PUBLIC WORKS OC SURVEY/FIELD SERVICES/BOUNDARY ANALYSIS & MAPPING		
			SANTIAGO CANYON ROAD EMBANKMENT PROTECTION		
			BOUNDARY MAP		
			PROJECT LIMITS: FROM : JACKSON RANCH ROAD SOUTH		
			TO: 300' NORTH		
		DATE OF SURVEY: 11/23/2021	BY: P. MAGUIRE	SHEET NO. 5 of 7	
		MAPPING	BY: F. DADASH, PLS		
		OFFICE CHECK	BY: E. MEDINA, PLS		
		FIELD CHECK	BY: P. MAGUIRE		
MARK	DATE	ITEM	SCALE: 1" = 50'	W.O. #ER19300	FILE #2021PW-ENG0006
REVISIONS			FILE: SANTIAGO CANYON ROAD EMBANKMENT_BOUNDARY_2021.DWG		





SYMBOL

Gate, Double

Guy Wire Anchor

Pilaster

Post

Rock/Boulder

Sign Post

Tree

Tree, Palm

Utility Pole w/ 2 Lights

Valve Undefined

Vault Undefined

ABBREVIATION

AC

CL

CP

DWY

FD

Asphalt Concrete

Centerline

Control Point

Driveway

Found

LINE PATTERN KEY

Bush Row Outline

Centerline

Concrete Wall

Edge of Concrete

Edge of Asphalt Pavement

Fence Barbed-Wire

Fence Chainlink

Fence Pipe and Cable

Fence Plastic

Fence Post and Wire

Fence Wood

Fence Wrought Iron

Flowline

gl

Grade Line

hp

Guard Rail

hp

Hinge Point

R/W

Right of Way

Striping

AREA PATTERN KEY

Concrete

Gravel

Rip Rap

NOTES

DIMENSIONS ON FEATURES ALONG R/W REPRESENT POSSIBLE ENCROACHMENTS OR CLEARANCES

U.S. Survey Foot

OC Public Works
OC Survey/Field Services
Boundary Analysis & Mapping

0' 10' 20' 40' 60'

SCALE: 1" = 20'

CONTOUR INTERVAL: 1'

MARK

DATE

ITEM

REVISIONS

PROJECT LIMITS: FROM : JACKSON RANCH ROAD SOUTH

TO: 300' NORTH

DATE OF SURVEY: 11/23/2021

MAPPING

OFFICE CHECK

FIELD CHECK

SCALE: 1"=20'

W.O. #ER19300

BY: P. MAGUIRE

BY: F. DADASHI, PLS

BY: E. MEDINA, PLS

BY: P. MAGUIRE

FILE #2021PW-ENG0006

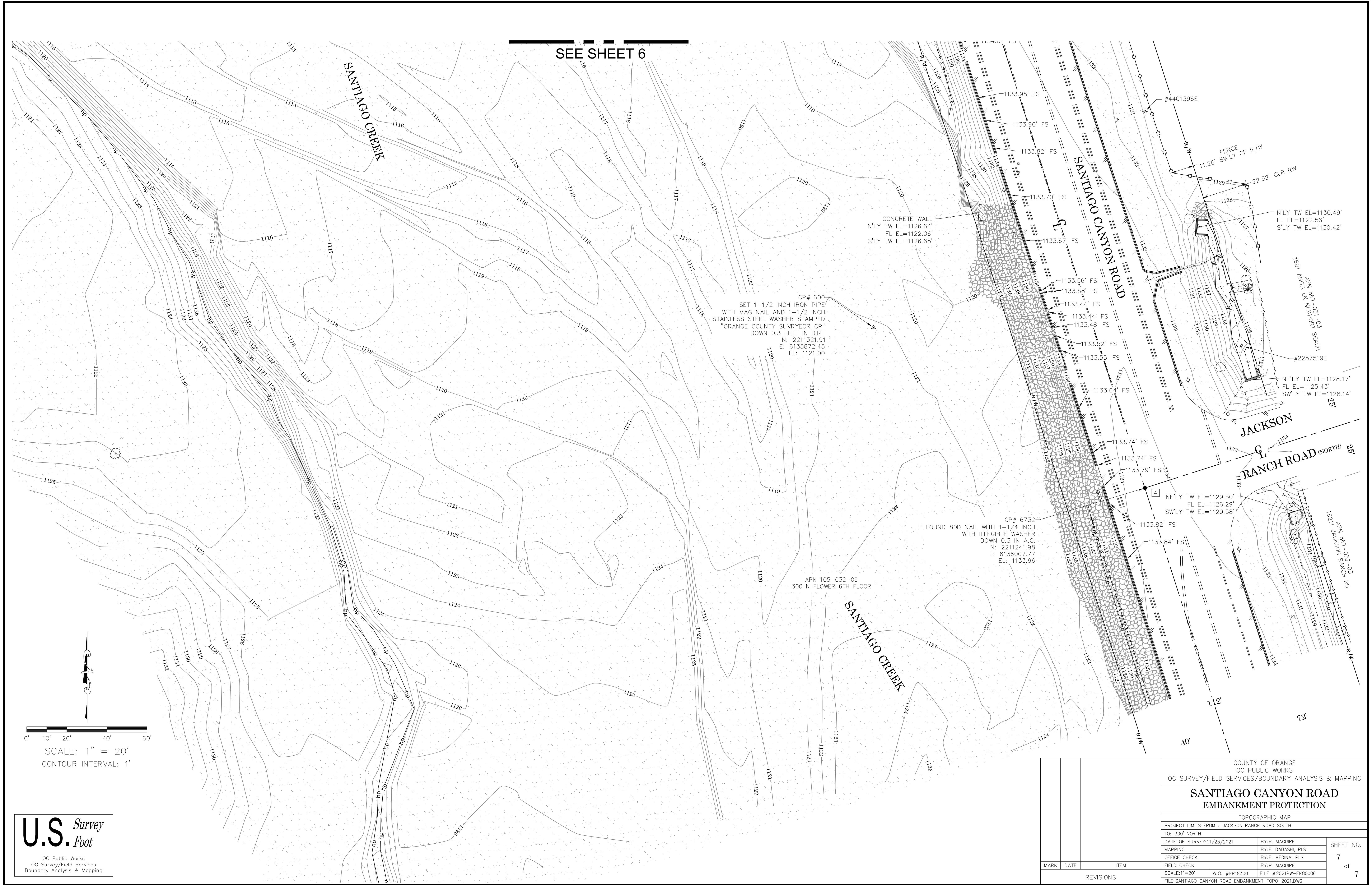
FILE: SANTIAGO CANYON ROAD EMBANKMENT_TOPO_2021.DWG

SHEET NO.

6

of

7



U.S. Survey
Foot

OC Public Works
OC Survey/Field Services
Boundary Analysis & Mapping

COUNTY OF ORANGE OC PUBLIC WORKS OC SURVEY/FIELD SERVICES/BOUNDARY ANALYSIS & MAPPING			
SANTIAGO CANYON ROAD EMBANKMENT PROTECTION			
TOPOGRAPHIC MAP			
PROJECT LIMITS: FROM : JACKSON RANCH ROAD SOUTH			
TO: 300' NORTH			
DATE OF SURVEY: 11/23/2021		BY: P. MAGUIRE	
MAPPING		BY: F. DADASHI, PLS	
OFFICE CHECK		BY: E. MEDINA, PLS	
FIELD CHECK		BY: P. MAGUIRE	
SCALE: 1"=20'		W.O. #ER19300	
FILE: SANTIAGO CANYON ROAD EMBANKMENT_TOPO_2021.DWG		FILE: #2021PW-ENG0006	
MARK	DATE	ITEM	SHEET NO.
REVISIONS			7 of 7