



OC PUBLIC WORKS DEPARTMENT  
SHANE SILSBY, DIRECTOR  
KEVIN HILLS, COUNTY SURVEYOR  
SANTA ANA RIVER  
PARKWAY EXTENSION



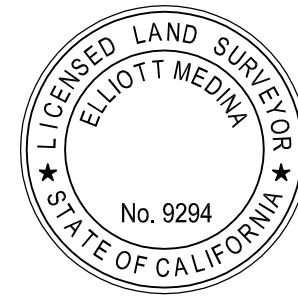
LOCATION MAP



SENIOR LAND SURVEYOR'S CERTIFICATE:

THIS MAP CORRECTLY REPRESENTS A SURVEY MADE BY ME OR UNDER MY DIRECTION IN CONFORMANCE WITH REQUIREMENTS OF THE PROFESSIONAL LAND SURVEYOR'S ACT; THIS 21 DAY OF JANUARY, 2020.

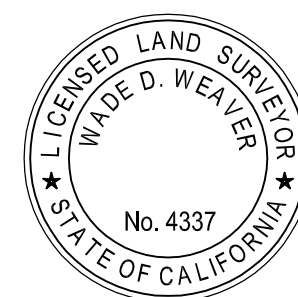
ELLIOTT MEDINA, PLS. SENIOR LAND SURVEYOR



DEPUTY COUNTY SURVEYOR'S STATEMENT:

THIS MAP HAS BEEN EXAMINED IN ACCORDANCE WITH THE PROFESSIONAL LAND SURVEYOR'S ACT; THIS 21 DAY OF JANUARY, 2020.

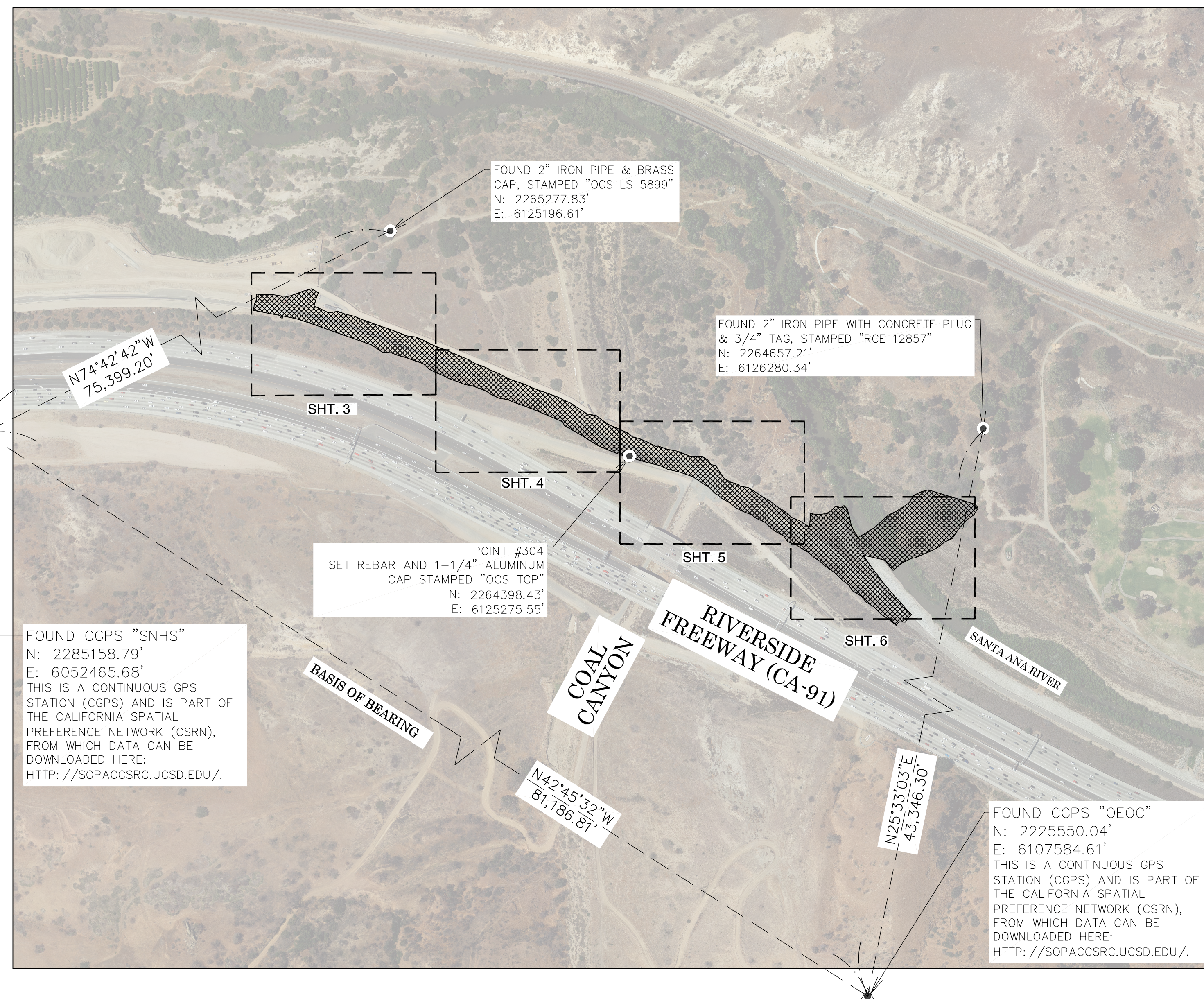
WADE WEAVER, PLS. DEPUTY COUNTY SURVEYOR



U.S. Survey  
Foot

OC Public Works  
OC Survey/Field Services  
Boundary Analysis & Mapping

N.T.S.



BASIS OF BEARINGS

THE BASIS OF BEARINGS FOR THIS SURVEY IS BASED ON THE CALIFORNIA COORDINATE SYSTEM (CCS83), ZONE VI, NAD 83, OCS (2007.00) EPOCH ADJUSTMENT, AS DETERMINED LOCALLY BY A LINE BETWEEN CONTINUOUS GLOBAL POSITIONING STATIONS CGPS (OECC) AND (SNHS) BEING NORTH 42°45'32" WEST AS DERIVED FROM THE COORDINATES PUBLISHED BY THE CALIFORNIA SPATIAL REFERENCE CENTER (CSRC) ALONG WITH DATA SHEETS ON FILE IN THE OFFICE OF THE ORANGE COUNTY SURVEYOR.

HORIZONTAL DATUM

COORDINATES SHOWN ARE BASED ON THE CALIFORNIA COORDINATE SYSTEM (CCS83), ZONE VI, NAD 83, OCS 2007.0 EPOCH ADJUSTMENT.

ALL DISTANCES SHOWN ARE GRID, UNLESS OTHERWISE NOTED. TO OBTAIN GROUND DISTANCES MULTIPLY GRID BY 1.0000185.

THE COMBINATION FACTOR WAS DERIVED FROM POINT NUMBER 304.

ALL DISTANCES ARE BASED ON THE U.S. SURVEY FOOT.

VERTICAL DATUM

O.C.S. BM. TRI-CO ELEV. = 420.431' YEAR LEVELED: 1988  
NAVD 1988 (O.C.S. 1995 ADJUSTMENT)

DESCRIBED BY OCS 2003 - FOUND 3 3/4" OCS ALUMINUM BENCHMARK DISK STAMPED "TRI-CO", SET IN THE TOP OF A 1 FT. DIAMETER CONCRETE POST. MONUMENT IS LOCATED ALONG THE NORTHERLY SIDE OF THE FAIRWAY FOR THE SANTA ANA GOLF COURSE HOLE #1, FROM THE INTERSECTION OF GREEN RIVER AND CREST RIDGE DRIVE PROCEED WESTERLY ALONG GREEN RIVER 1MILE TO THE BRIDGE CROSSING THE SANTA ANA RIVER PROCEED ACROSS SAID BRIDGE AND ENTER GATE FOR GOLF COURSE, PROCEED NORTHWESTERLY ACROSS HOLE #1 290+/- FT. TO THREE WHITE MARKER PIPES FORMING A TRIANGLE SHAPE AROUND BENCHMARK. MONUMENT IS DOWN 0.6 FT. BELOW THE SURFACE OF THE GROUND.

NOTES

THE SURVEY INFORMATION SHOWN HEREON IS TO BE USED FOR TOPOGRAPHIC RELATIONSHIPS ONLY AND IS NOT INTENDED FOR LAND ACQUISITION OR BOUNDARY PURPOSES. PARCELS SHOWN WITHOUT BEARING AND DISTANCES ARE FOR GRAPHICAL PURPOSES AND ARE PENDING RECEIPT OF TITLE REPORT.

SHEET INDEX

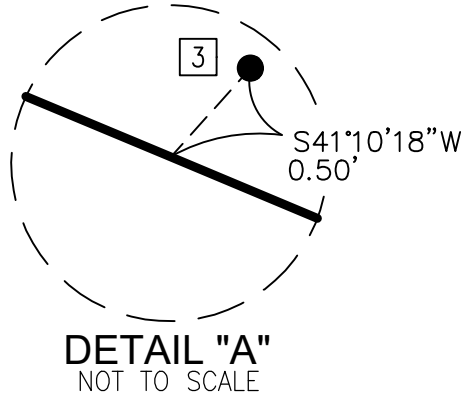
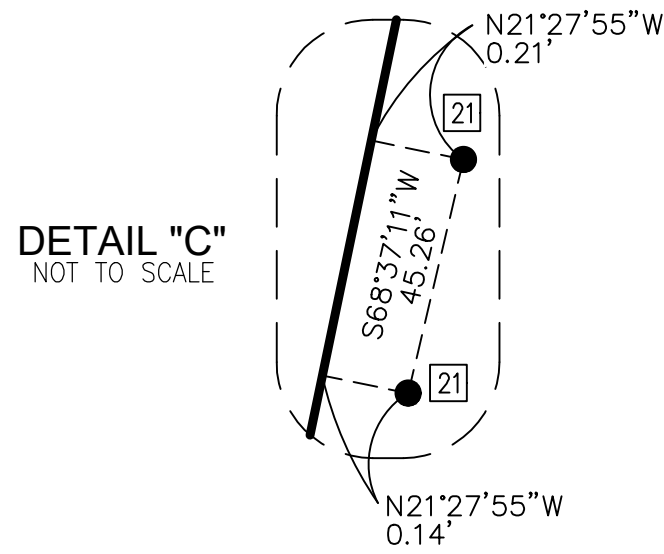
SHEET	NO.	DESCRIPTION
SHEET	1	TITLE SHEET
SHEET	2	BOUNDARY ANALYSIS
SHEETS	3-6	TOPOGRAPHIC MAP

PURPOSE OF SURVEY

THE PURPOSE OF THIS SURVEY IS TO PROVIDE A TOPOGRAPHIC MAP AND RIGHT OF WAY ESTABLISHMENT FOR BIKE TRAIL SYSTEM.

			COUNTY OF ORANGE OC PUBLIC WORKS OC SURVEY/FIELD SERVICES/BOUNDARY ANALYSIS & MAPPING	
			SANTA ANA RIVER PARKWAY EXTENSION	
			TITLE SHEET	
			FROM: 4800 FEET WEST OF THE GREEN RIVER ROAD CUL-DE-SAC. APPROXIMATELY 900 FEET EAST OF THE COAL CANYON CROSSING.	
			DATE OF SURVEY: OCTOBER, 2019	BY: R. MACIAS & PARTY
			TOPOGRAPHIC MAPPING	BY: F. DADASHI
			OFFICE CHECK	BY: E. MEDINA, PLS.
			FIELD CHECK	BY: R. MACIAS, PLS.
			SCALE: N.T.S.	W.O. # EC41753
			FILE: SANTA_ANA_TOPO_2019.DWG	FILE NO.: 1920PW-IN0005
MARK	DATE	ITEM		
REVISIONS				
			SHEET NO. 1 of 6	





NOTES

BOUNDARY SHOWN IN BOLD ESTABLISHED BY SURVEY.  
THE LOT LINES ARE FOR GRAPHICAL PRESENTATION ONLY.

BASIS OF BEARINGS

THE BASIS OF BEARINGS SHOWN HEREON ARE BASED  
ON THE CGPS STATIONS "OEOC" AND "SNHS" HAVING  
A BEARING OF NORTH 42°45'32" WEST.

HORIZONTAL DATUM

COORDINATES SHOWN ARE BASED ON THE CALIFORNIA COORDINATE  
SYSTEM (CCS83), ZONE VI, NAD 83, OCS 2007.0 EPOCH ADJUSTMENT.

ALL DISTANCES SHOWN ARE GRID, UNLESS OTHERWISE NOTED.  
TO OBTAIN GROUND DISTANCES MULTIPLY GRID BY 1.0000185.

THE COMBINATION FACTOR WAS DERIVED FROM POINT NUMBER 304.

ALL DISTANCES ARE BASED ON THE U.S. SURVEY FOOT.

REFERENCES

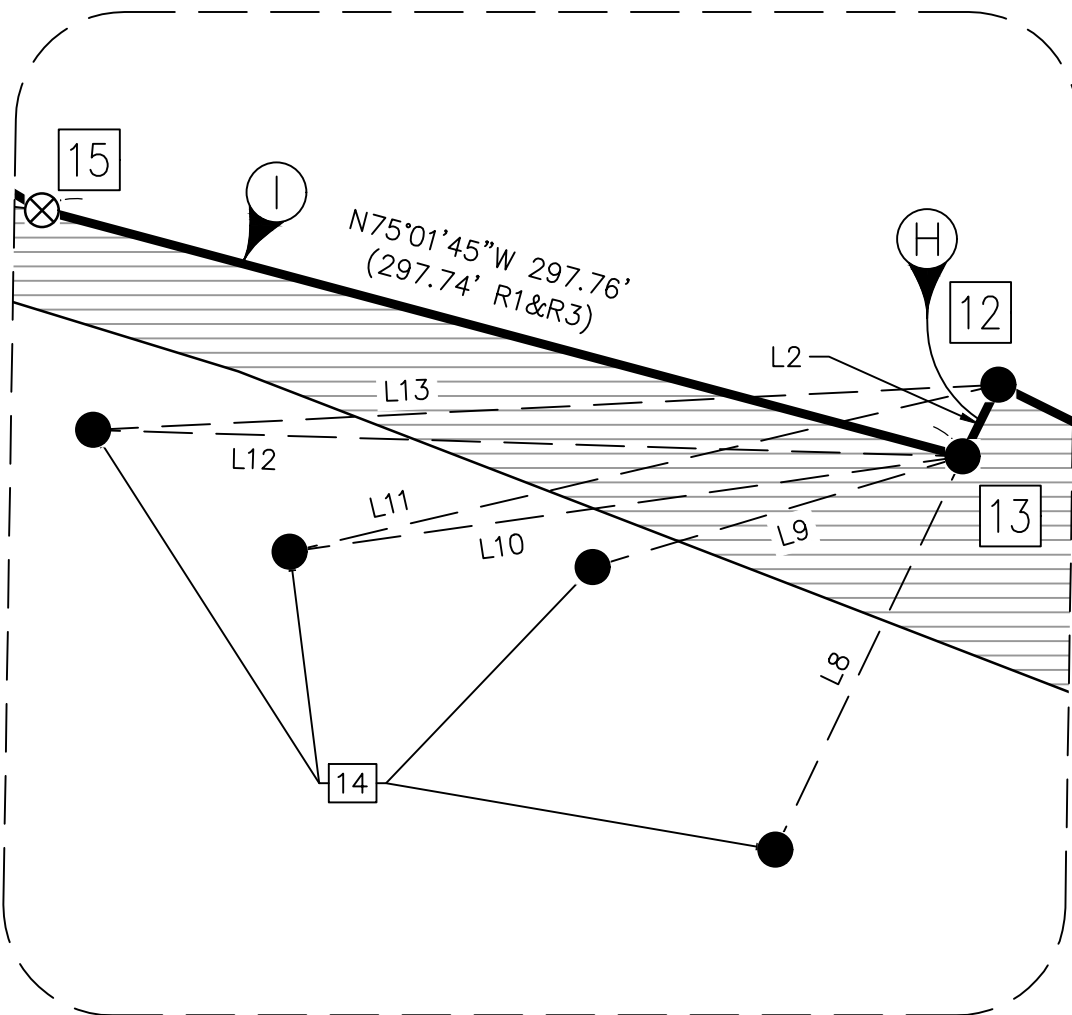
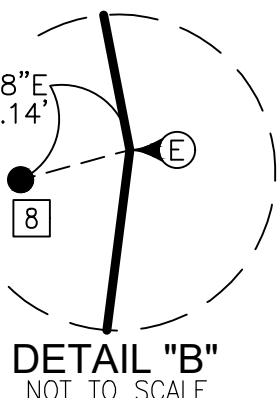
- (R1) = RECORD OF SURVEY 94-1067 RSB 158/1-18  
(R2) = RECORD OF SURVEY 80-1101 RSB 101/41-42  
(R3) = RELINQUISHMENT MAP NO. R120032 INST. NO. 2010000268884 O.R.  
(R4) = CORNER RECORD C.R., 2012-1330  
(R5) = CORNER RECORD C.R., 2012-1329  
(R6) = CORNER RECORD C.R., 2012-1328  
(R7) = CORNER RECORD C.R., 2012-1327  
(R8) = CORNER RECORD C.R., 2012-1326

DETAIL "C"  
NOT TO SCALE

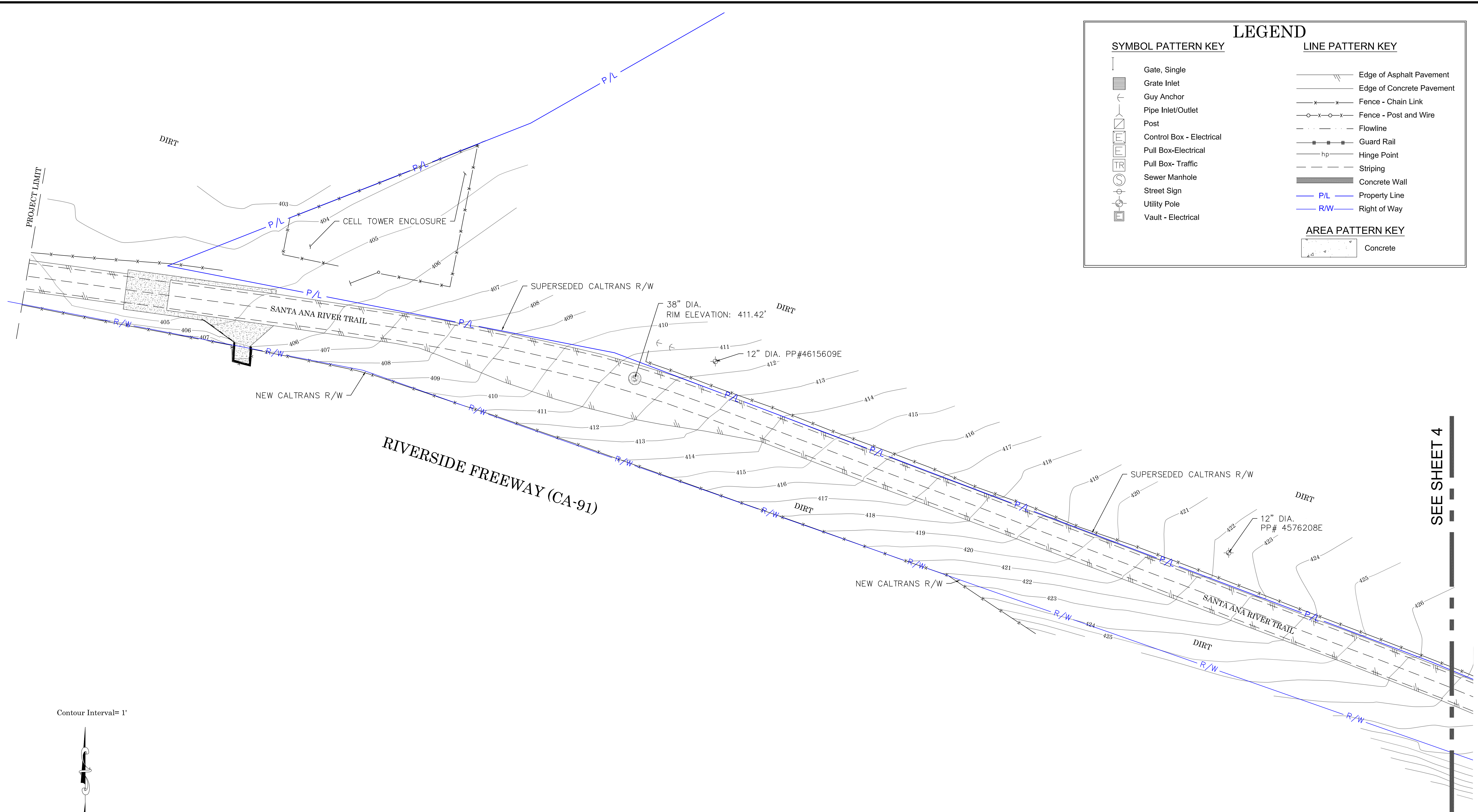
DETAIL "A"  
NOT TO SCALE

RECORD OF SURVEY 80-1101  
R.S.B. 101/41-42

RECORD OF SURVEY 94-1067  
R.S.B. 158/1-18







**SYMBOL PATTERN KEY**

- Gate, Single
- Grate Inlet
- Guy Anchor
- Pipe Inlet/Outlet
- Post
- Control Box - Electrical
- Pull Box-Electrical
- Pull Box- Traffic
- Sewer Manhole
- Street Sign
- Utility Pole
- Vault - Electrical

**LEGEND**

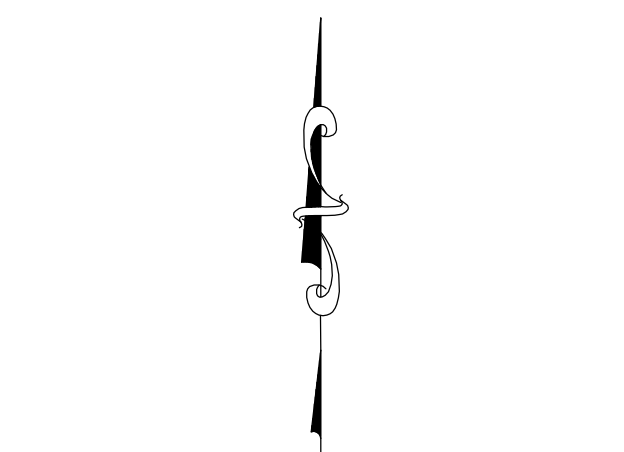
**LINE PATTERN KEY**

- Edge of Asphalt Pavement
- Edge of Concrete Pavement
- Fence - Chain Link
- Fence - Post and Wire
- Flowline
- Guard Rail
- Hinge Point
- Striping
- Concrete Wall
- Property Line
- Right of Way

**AREA PATTERN KEY**

- Concrete

Contour Interval= 1'



SCALE: 1" = 20'

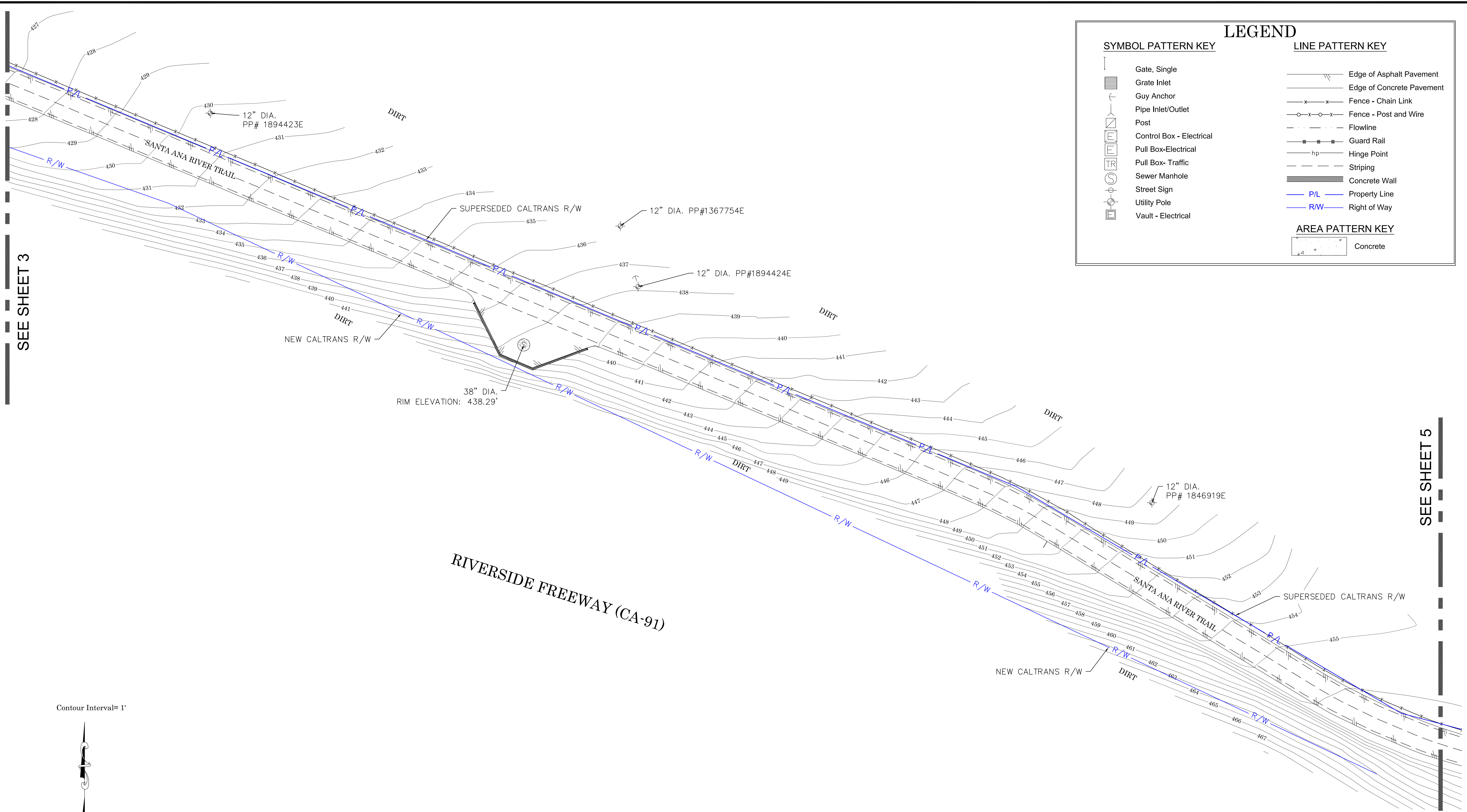
**U.S. Survey Foot**

OC Public Works  
OC Survey/Field Services  
Boundary Analysis & Mapping

SEE SHEET 4

			COUNTY OF ORANGE OC PUBLIC WORKS OC SURVEY/FIELD SERVICES/BOUNDARY ANALYSIS & MAPPING			
			SANTA ANA RIVER PARKWAY EXTENSION			
			TOPOGRAPHIC MAP			
			FROM: 4800 FEET WEST OF THE GREEN RIVER ROAD CUL-DE-SAC. APPROXIMATELY 900 FEET EAST OF THE COAL CANYON CROSSING.			
			DATE OF SURVEY: OCTOBER, 2019		BY: R. MACIAS & PARTY	
			TOPOGRAPHIC MAPPING		BY: F. DADASHI	
MARK	DATE	ITEM	OFFICE CHECK		BY: E. MEDINA, PLS.	
			FIELD CHECK		BY: R. MACIAS, PLS.	
			REVISIONS		SCALE: 1" = 20'      W.O. # EC41753	
				FILE: SANTA_ANA_TOPO_2019.DWG		
						SHEET NO.  3 of  6





**SYMBOL PATTERN KEY**

- Gate, Single
- Grate Inlet
- Guy Anchor
- Pipe Inlet/Outlet
- Post
- Control Box - Electrical
- Pull Box-Electrical
- Pull Box- Traffic
- Sewer Manhole
- Street Sign
- Utility Pole
- Vault - Electrical

**LEGEND**

**LINE PATTERN KEY**

- Edge of Asphalt Pavement
- Edge of Concrete Pavement
- Fence - Chain Link
- Fence - Post and Wire
- Flowline
- Guard Rail
- Hinge Point
- Striping
- Concrete Wall
- Property Line
- Right of Way

**AREA PATTERN KEY**

- Concrete

SEE SHEET 3

SEE SHEET 5

Contour Interval= 1'

SCALE: 1" = 20'

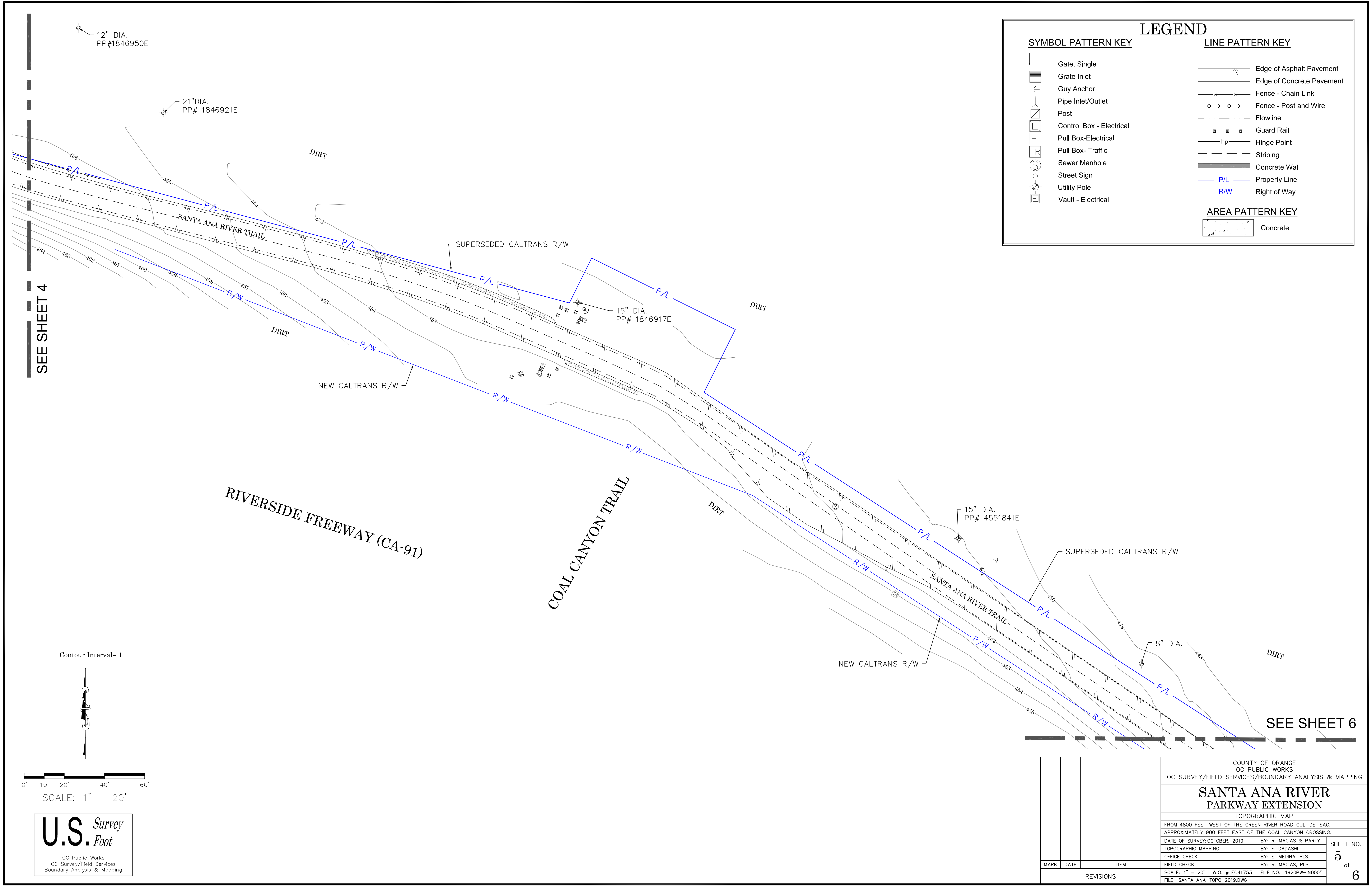
U.S. Survey

Foot

OC Public Works  
OC Survey/Field Services  
Boundary Analysis & Mapping

			COUNTY OF ORANGE OC PUBLIC WORKS OC SURVEY/FIELD SERVICES/BOUNDARY ANALYSIS & MAPPING			
			SANTA ANA RIVER PARKWAY EXTENSION			
			TOPOGRAPHIC MAP			
			FROM: 4800 FEET WEST OF THE GREEN RIVER ROAD CUL-DE-SAC. APPROXIMATELY 900 FEET EAST OF THE COAL CANYON CROSSING.			
			DATE OF SURVEY: OCTOBER, 2019		BY: R. MACIAS & PARTY	
			TOPOGRAPHIC MAPPING		BY: F. DADASHI	
			OFFICE CHECK		BY: E. MEDINA, PLS.	
			FIELD CHECK		BY: R. MACIAS, PLS.	
			SCALE: 1" = 20'		W.O. # EC41753	
			FILE: SANTA_ANA_TOPO_2019.DWG		FILE NO.: 1920PW-IN0005	
MARK	DATE	ITEM			SHEET NO.  4 of  6	
REVISIONS						





**SYMBOL PATTERN KEY**

- Gate, Single
- Grate Inlet
- Guy Anchor
- Pipe Inlet/Outlet
- Post
- Control Box - Electrical
- Pull Box-Electrical
- Pull Box- Traffic
- Sewer Manhole
- Street Sign
- Utility Pole
- Vault - Electrical

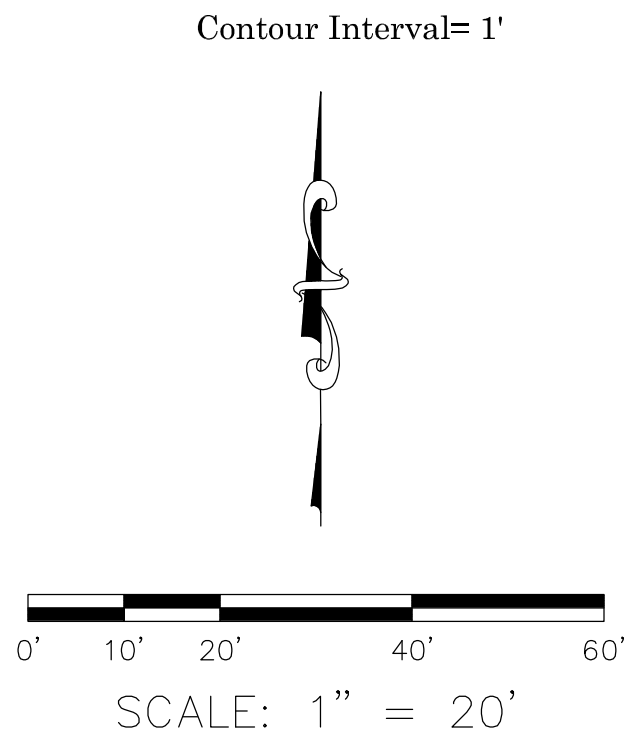
**LEGEND**

**LINE PATTERN KEY**

- Edge of Asphalt Pavement
- Edge of Concrete Pavement
- Fence - Chain Link
- Fence - Post and Wire
- Flowline
- Guard Rail
- Hinge Point
- Striping
- Concrete Wall
- Property Line
- Right of Way

**AREA PATTERN KEY**

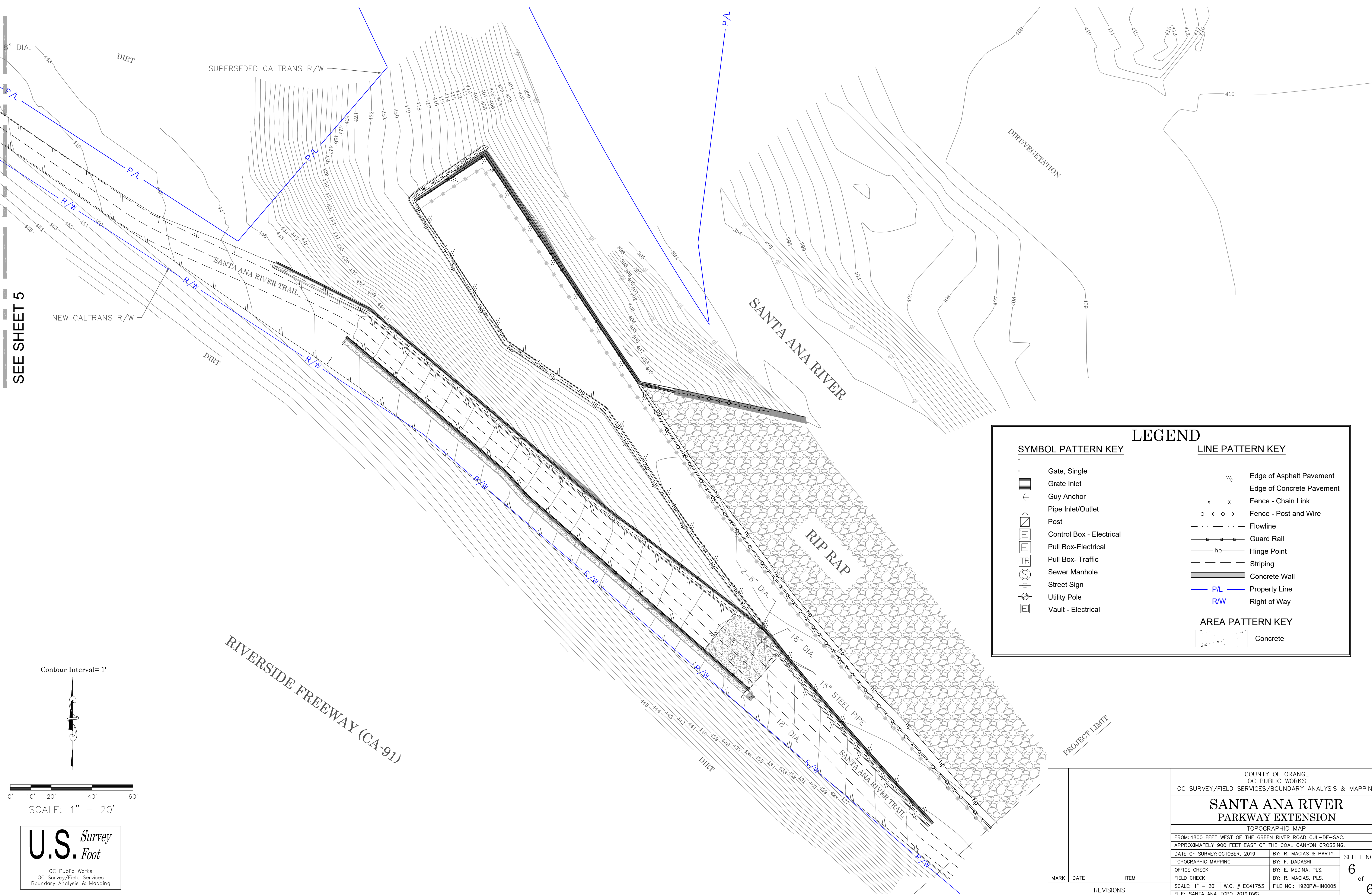
- Concrete



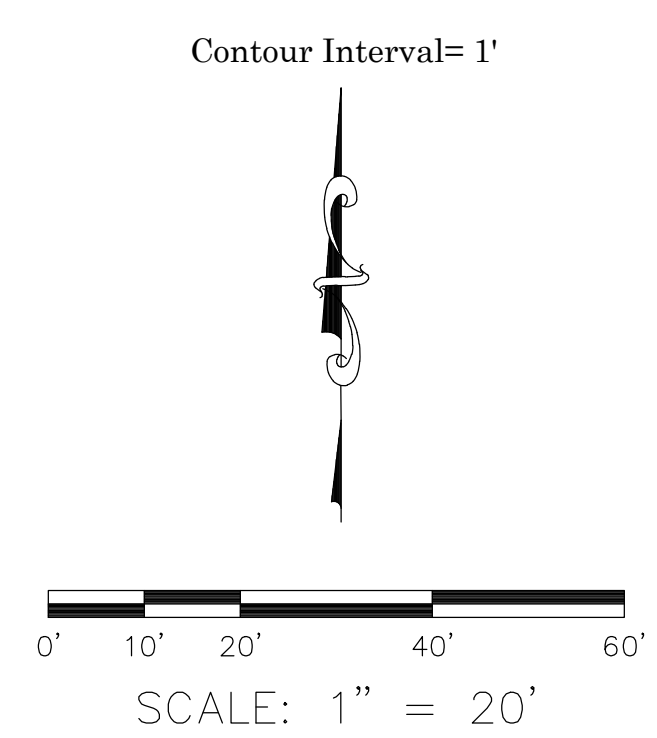
**U.S. Survey**  
*Foot*  
OC Public Works  
OC Survey/Field Services  
Boundary Analysis & Mapping

				COUNTY OF ORANGE OC PUBLIC WORKS OC SURVEY/FIELD SERVICES/BOUNDARY ANALYSIS & MAPPING	
				SANTA ANA RIVER PARKWAY EXTENSION	
				FROM: 4800 FEET WEST OF THE GREEN RIVER ROAD CUL-DE-SAC. APPROXIMATELY 900 FEET EAST OF THE COAL CANYON CROSSING.	
				DATE OF SURVEY: OCTOBER, 2019	
TOPOGRAPHIC MAPPING		BY: F. DADASHI			
OFFICE CHECK		BY: E. MEDINA, PLS.			
FIELD CHECK		BY: R. MACIAS, PLS.			
MARK	DATE	ITEM	SCALE: 1" = 20'      W.O. # EC41753		FILE NO.: 1920PW-IN0005
			FILE: SANTA_ANA_TOPO_2019.DWG		
REVISIONS					





SEE SHEET 5



**U.S. Survey Foot**

OC Public Works

OC Survey/Field Services

Boundary Analysis & Mapping

**SYMBOL PATTERN KEY**

**LINE PATTERN KEY**

**AREA PATTERN KEY**

			COUNTY OF ORANGE OC PUBLIC WORKS OC SURVEY/FIELD SERVICES/BOUNDARY ANALYSIS & MAPPING		
			<b>SANTA ANA RIVER PARKWAY EXTENSION</b>		
			TOPOGRAPHIC MAP		
			FROM: 4800 FEET WEST OF THE GREEN RIVER ROAD CUL-DE-SAC. APPROXIMATELY 900 FEET EAST OF THE COAL CANYON CROSSING.		
			DATE OF SURVEY: OCTOBER, 2019	BY: R. MACIAS & PARTY	SHEET NO. <b>6</b> of <b>6</b>
			TOPOGRAPHIC MAPPING	BY: F. DADASHI	
			OFFICE CHECK	BY: E. MEDINA, PLS.	
			FIELD CHECK	BY: R. MACIAS, PLS.	
			SCALE: 1" = 20'	W.O. # EC41753	
			FILE: SANTA_ANA_TOPO_2019.DWG		FILE NO.: 1920PW-IN0005
MARK	DATE	ITEM	REVISIONS		