

SHEET 1 OF 4 SHEETS
SEE SHEET 2 FOR MONUMENT
NOTES, ESTABLISHMENT NOTES,
REFERENCES AND LEGEND.

RECORD OF SURVEY NO. 2020-1040

IN THE CITY OF YORBA LINDA, COUNTY OF ORANGE, STATE OF CALIFORNIA.
BEING A SURVEY OF A PORTION OF BLOCK 32 OF IRVINE'S SUBDIVISION AS SHOWN ON A MAP FIELD IN
BOOK 1, PAGE 88 OF MISCELLANEOUS MAPS. ALSO DESCRIBED IN GRANT DEED RECORDED JUNE 29, 2001
AS INSTRUMENT NO. 20010437659 OF OFFICIAL RECORDS OF SAID COUNTY.

COUNTY OF ORANGE-OC SURVEY ELLIOTT MEDINA, P.L.S. 9294
DATE OF SURVEY: OCTOBER 2019

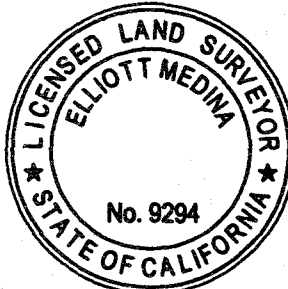
ACCEPTED AND FILED AT
THE REQUEST OF
THE ORANGE COUNTY SURVEYOR'S OFFICE
DATE 8-6-2020
TIME 9:25 AM FEE \$ NO FEE
INSTRUMENT NO. 2020-385288
BOOK 313 PAGES 37-40 M/L
HUGH NGUYEN
COUNTY CLERK-RECORDER
BY Ram
DEPUTY

SURVEYOR'S STATEMENT

THIS MAP CORRECTLY REPRESENTS A SURVEY MADE BY ME OR UNDER MY DIRECTION IN
CONFORMANCE WITH THE REQUIREMENTS OF THE PROFESSIONAL LAND SURVEYORS' ACT AT THE
REQUEST OF COUNTY OF ORANGE CEO REAL ESTATE, IN OCTOBER 2019.

Elliott Medina
ELLIOTT MEDINA, P.L.S. 9294

07/27/2020
DATE



EXEMPT RECORDING REQUESTED
PER GOVERNMENT CODE 27383

COUNTY SURVEYOR'S STATEMENT

THIS MAP HAS BEEN EXAMINED IN ACCORDANCE WITH SECTION 8766 OF THE CALIFORNIA
PROFESSIONAL LAND SURVEYORS' ACT, THIS 30TH DAY OF JULY 2020.

KEVIN R. HILLS, COUNTY SURVEYOR
P.L.S. 6617

Lily M. N. Sandberg
BY: LILY M. N. SANDBERG, DEPUTY COUNTY SURVEYOR
P.L.S. 8402



BASIS OF BEARINGS

THE BASIS OF BEARINGS FOR THIS SURVEY IS BASED ON THE CALIFORNIA COORDINATE
SYSTEM (CCS83), ZONE VI, NAD 83, OCS GPS (2007.00) EPOCH ADJUSTMENT, AS
DETERMINED LOCALLY BY A LINE BETWEEN CONTINUOUS GLOBAL POSITIONING STATIONS
(CGPS) "OEOC" AND "SNHS" BEING NORTH 42°45'32" WEST AS DERIVED FROM THE
COORDINATES PUBLISHED AND ON FILE IN THE OFFICE OF THE ORANGE COUNTY
SURVEYOR.

DATUM STATEMENT

COORDINATES SHOWN ARE BASED ON THE CALIFORNIA COORDINATE SYSTEM OF 1983
(CCS83), ZONE VI, NAD83 2007.00 EPOCH ADJUSTMENT.

ALL MEASURED DISTANCES SHOWN ARE GRID, UNLESS OTHERWISE NOTED. MULTIPLY GRID
DISTANCES BY 1.00008150. TO OBTAIN A GROUND DISTANCE. THE COMBINATION FACTOR
WAS HELD AT MONUMENT 31.

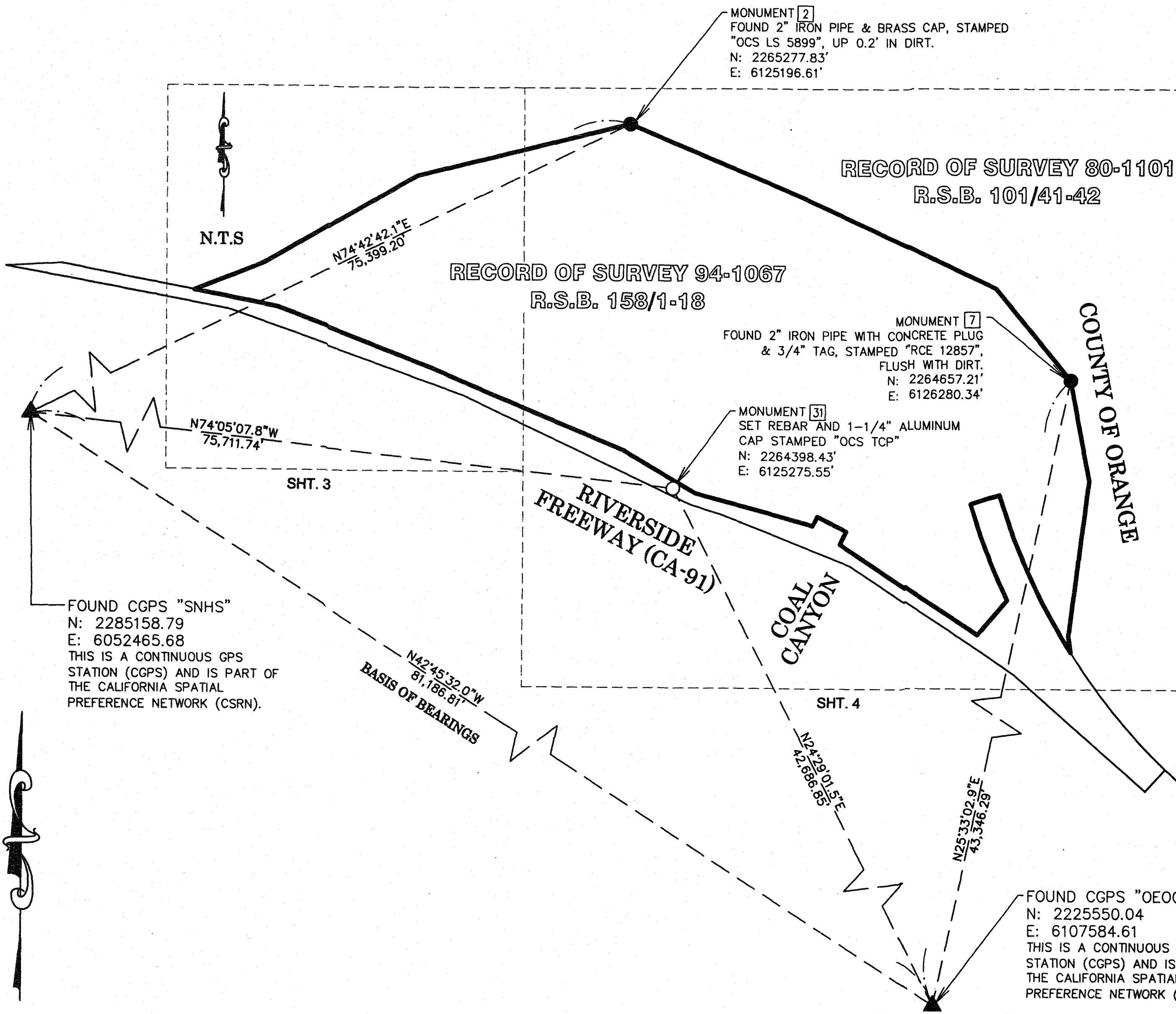
ALL DISTANCES ARE BASED ON THE U.S. SURVEY FOOT.

NOTE:

SEE SHEET 2 FOR MONUMENT NOTES, ESTABLISHMENT
NOTES, REFERENCES AND LEGEND.

RECORD DATA NOTE

ALL RECORD DISTANCES SHOWN HEREON ARE GROUND OR LEFT AS SHOWN ON
DOCUMENTS OF RECORD.



N.T.S

SHEET 2 OF 4 SHEETS
SEE SHEET 1 FOR BASIS OF BEARING
AND DATUM STATEMENTS AND
RECORD DATA NOTE.

RECORD OF SURVEY NO. 2020-1040
IN THE CITY OF YORBA LINDA, COUNTY OF ORANGE, STATE OF CALIFORNIA
COUNTY OF ORANGE--OC SURVEY ELLIOTT MEDINA, P.L.S. 9294
DATE OF SURVEY: OCTOBER 2019

MONUMENT NOTES

- 1

FOUND 2" IRON PIPE WITH CONCRETE PLUG & 3/4" TAG, STAMPING ILLEGIBLE, FLUSH WITH DIRT, ACCEPTED PER (R1).
- 2

FOUND 2" IRON PIPE & BRASS CAP, STAMPED "OCS LS 5899", UP 0.2' IN DIRT, ACCEPTED PER (R1).
- 3

FOUND 2" IRON PIPE & BRASS CAP, STAMPED "OCS INUNDATION LINE JANUARY 1995", DOWN 2.1' IN DIRT PER (R1), APPEARS DISTURBED, DID NOT ACCEPT AS A POINT ON THE BOUNDARY LINE, ESTABLISHED BY PRORATION PER (R1).
- 4

FOUND 2" IRON PIPE & NAIL WITH NO TAG, DOWN 3.9' IN DIRT, ACCEPTED AS 2" BRASS O.C.S. DISK PER (R1).
- 5

SEARCHED NOT FOUND, ESTABLISHED BY PRORATION PER (R1).
- 6

FOUND 2" IRON PIPE WITH CONCRETE PLUG & 3/4" TAG, STAMPED "RCE 12857", DOWN 4.2' IN DIRT, ACCEPTED PER (R1).
- 7

FOUND 2" IRON PIPE WITH CONCRETE PLUG & 3/4" TAG, STAMPED "RCE 12857", FLUSH WITH DIRT, ACCEPTED PER (R1).
- 8

FOUND 2" IRON PIPE & BRASS CAP, STAMPED "OCS LS 5899", DOWN 0.4' IN DIRT PER (R1), APPEARS DISTURBED, DID NOT ACCEPT AS A POINT ON THE BOUNDARY LINE, ESTABLISHED BY LEAST SQUARE ADJUSTMENT.
- 9

FOUND 1-1/2" IRON PIPE WITH CONCRETE PLUG & 3/4" TAG, STAMPED "LS 5411", FLUSH WITH DIRT, ACCEPTED PER (R10).
- 10

FOUND 1-1/2" IRON PIPE WITH CONCRETE PLUG & 3/4" TAG, STAMPED "LS 5411", FLUSH WITH DIRT PER (R10).
- 11

FOUND 2X2 WOOD HUB WITH NAIL & 1-1/4" TAG, STAMPED "OCS", FLUSH WITH DIRT PER (R4).
- 12

FOUND 2" IRON PIPE & BRASS CAP, STAMPED "OCS LS 5899", DOWN 0.4' IN DIRT, ACCEPTED PER (R1), FIT TIES PER (R5).
- 13

FOUND 2" IRON PIPE & BRASS CAP, STAMPED "OCS LS 5899", DOWN 0.3' IN DIRT, PER (R1), ACCEPTED PER (R1), ONLY L8 FITS TIES PER (R5).
- 14

FOUND MAG NAIL WITH 1-3/4" TAG, STAMPED "LS 5411", FLUSH WITH A.C. ACCEPTED FOR TIES PER (R5).
- 15

SEARCHED NOT FOUND, ESTABLISHED BY TIES PER (R6).
- 16

FOUND LEAD--BRASS NAIL WITH 3/4" TAG, STAMPED "LS 5411", ON CONCRETE HEADWALL PER (R6).
- 17

FOUND 1-1/2" IRON PIPE WITH CONCRETE PLUG WITH 3/4" TAG, STAMPED "LS 5411", FLUSH WITH DIRT PER (R6).
- 18

SEARCHED NOT FOUND, ESTABLISHED BY TIES PER (R7).
- 19

FOUND 1-1/2" IRON PIPE WITH CONCRETE PLUG WITH 3/4" TAG, STAMPED "LS 5411", FLUSH WITH DIRT PER (R7).
- 20

SEARCHED NOT FOUND, ESTABLISHED BY 2 FOUND TIES, L25 AND L26, PER (R8).
- 21

FOUND LEAD AND HOLE IN CONCRETE FOOTING OF A FENCE POST, ACCEPTED AS THE LEAD AND 3/4" TAG, STAMPED "LS 5411" IN CONCRETE FENCE POST PER (R8).
- 22

SEARCHED NOT FOUND, ESTABLISHED BY HOLDING RECORD DISTANCE 80.00' FROM MONUMENT12AND RECORD ANGLE 89°54'07" FROM ESTABLISHMENT NOTE H PER (R1).
- 23

SEARCHED NOT FOUND, ESTABLISHED BY HOLDING RECORD DISTANCE 34.99' FROM ESTABLISHED POSITION22AND RECORD ANGLE 89°59'14" FROM ESTABLISHMENT NOTE S PER (R1).
- 24

SEARCHED NOT FOUND, ESTABLISHED BY HOLDING RECORD DISTANCE 111.96' FROM MONUMENT9AND RECORD ANGLE 97°44'28" FROM ESTABLISHMENT NOTE G PER (R1).
- 25

SEARCHED NOT FOUND, ESTABLISHED BY HOLDING RECORD CHORD DISTANCE 226.28' AND RECORD ANGLE 117°25'05" FROM ESTABLISHMENT NOTE F PER (R1).
- 26

SEARCHED NOT FOUND, ESTABLISHED BY HOLDING TANGENCY TO PREVIOUS CURVE AND RECORD DISTANCE 25.00', PER (R1).
- 27

SEARCHED NOT FOUND, ESTABLISHED BY HOLDING RECORD ANGLE 90°00'00" AND RECORD DISTANCE OF 75.00' FROM ESTABLISHMENT NOTE O PER (R1).
- 28

SEARCHED NOT FOUND, ESTABLISHED BY RECORD ANGLE 90°00'00" AND RECORD DISTANCE OF 25.00' FROM POSITION27PER (R1).
- 29

SEARCHED NOT FOUND, ESTABLISHED BY HOLDING RECORD CURVE DATA PER (R1), COMMENCING FROM ESTABLISHED POINT28, RADIAL TO AND 75' PARALLEL WITH ESTABLISHMENT NOTE M.
- 30

SEARCHED NOT FOUND, ESTABLISHED BY TIES PER (R6).
- 31

SET REBAR AND 1-1/4" ALUMINUM CAP STAMPED "OCS TCP" FLUSH

ESTABLISHMENT NOTES

- A

ESTABLISHED THE BOUNDARY BY HOLDING FOUND MONUMENTS1AND 2.
- B

ESTABLISHED THE BOUNDARY BY HOLDING FOUND MONUMENTS2AND 4.
- C

ESTABLISHED THE BOUNDARY BY HOLDING FOUND MONUMENTS4AND 6.
- D

ESTABLISHED THE BOUNDARY BY HOLDING FOUND MONUMENTS6AND 7.
- E

ESTABLISHED THE BOUNDARY BY LEAST SQUARE ADJUSTMENT BETWEEN FOUND MONUMENT7AND ESTABLISHED POINT29.
- F

ESTABLISHED BY HOLDING FOUND MONUMENT9AND ESTABLISHED POINT24.
- G

ESTABLISHED THE BOUNDARY BY HOLDING FOUND MONUMENT 9 AND ESTABLISHED POINT23.
- H

ESTABLISHED THE BOUNDARY BY HOLDING FOUND MONUMENTS12AND13.
- I

ESTABLISHED THE BOUNDARY BY HOLDING FOUND MONUMENT13AND ESTABLISHED POINT15.
- J

ESTABLISHED THE BOUNDARY BY HOLDING ESTABLISHED POINTS15AND 30.
- K

ESTABLISHED THE BOUNDARY BY HOLDING ESTABLISHED POINTS30AND18.
- L

ESTABLISHED THE BOUNDARY BY HOLDING ESTABLISHED POINTS18AND20.
- M

ESTABLISHED THE CURVE BY HOLDING ESTABLISHED POINT24AT RECORD RADIUS AND DELTA PER (R1).
- N

ESTABLISHED THE BOUNDARY BY HOLDING ESTABLISHED POINTS25AND26.
- O

ESTABLISHED THE BOUNDARY BY HOLDING ESTABLISHED POINTS26AND27.
- P

ESTABLISHED THE CURVE BY HOLDING ESTABLISHED POINT29AT RECORD CURVE DATA PER (R1), BEING RADIAL TO AND 75.00' PARALLEL WITH ESTABLISHMENT A PER (R1).
- Q

ESTABLISHED PARALLEL TO AND 75.00' FROM ESTABLISHMENTN.
- R

ESTABLISHED THE BOUNDARY BY HOLDING ESTABLISHED POINTS22AND23.
- S

ESTABLISHED THE BOUNDARY BY HOLDING FOUND MONUMENT 12 AND ESTABLISHED POINT22.
- T

ESTABLISHED THE BOUNDARY BY LEAST SQUARES ADJUSTMENT METHOD BY HOLDING FOUND MONUMENT 11 AND ESTABLISHED POINT20.

NOTES

BOUNDARY SHOWN IN BOLD ESTABLISHED BY SURVEY.
THE LOT LINES ARE FOR GRAPHICAL PRESENTATION ONLY.

REFERENCES

- (R1) = RECORD OF SURVEY 94--1067 RSB 158/1--18
- (R2) = RECORD OF SURVEY 80--1101 RSB 101/41--42
- (R3) = RELINQUISHMENT MAP NO. R120032 FILED IN STATE HIGHWAY MAP BOOK 16, PAGES 43--49, APRIL 14, 2010, INDEX NO. 20100000175495 O.R.
- (R4) = CORNER RECORD CORNER RECORD, 2012--1330
- (R5) = CORNER RECORD CORNER RECORD, 2012--1329
- (R6) = CORNER RECORD CORNER RECORD, 2012--1328
- (R7) = CORNER RECORD CORNER RECORD, 2012--1327
- (R8) = CORNER RECORD CORNER RECORD, 2012--1326
- (R9) = DEED RECORDED ON JUNE 29, 2001, AS INSTRUMENT NO. 20010437659 O.R.
- (R10) = CORNER RECORD CORNER RECORD, 2014--2541

LEGEND

- FOUND MONUMENT AS NOTED
- ⊗

SEARCHED NOT FOUND, UNLESS NOTED OTHERWISE
- ▲

INDICATES FOUND OCS GPS HORIZONTAL CONTROL STATION MONUMENT PER RECORDS ON FILE IN THE OFFICE OF THE ORANGE COUNTY SURVEYOR
- RIGHT OF WAY RELINQUISHED TO THE O.C.F.C.D. BY THE STATE OF CALIFORNIA IN REQUEST NO. R120032 INST. NO. 2010000268884 RECORDED 06/08/2010 O.R.
- CFR

CALCULATED FROM RECORD
- F.D.

FOUND
- O.R.

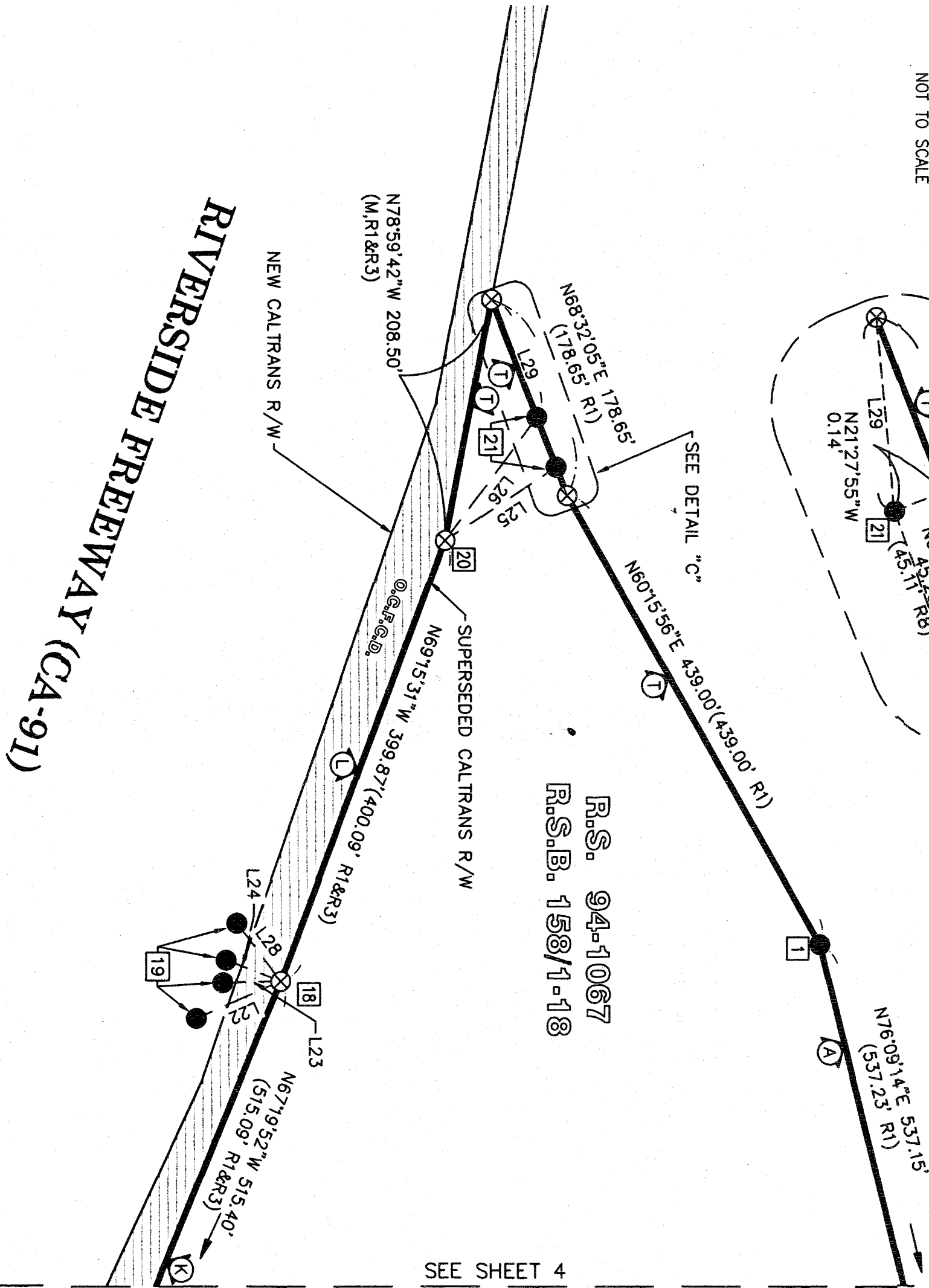
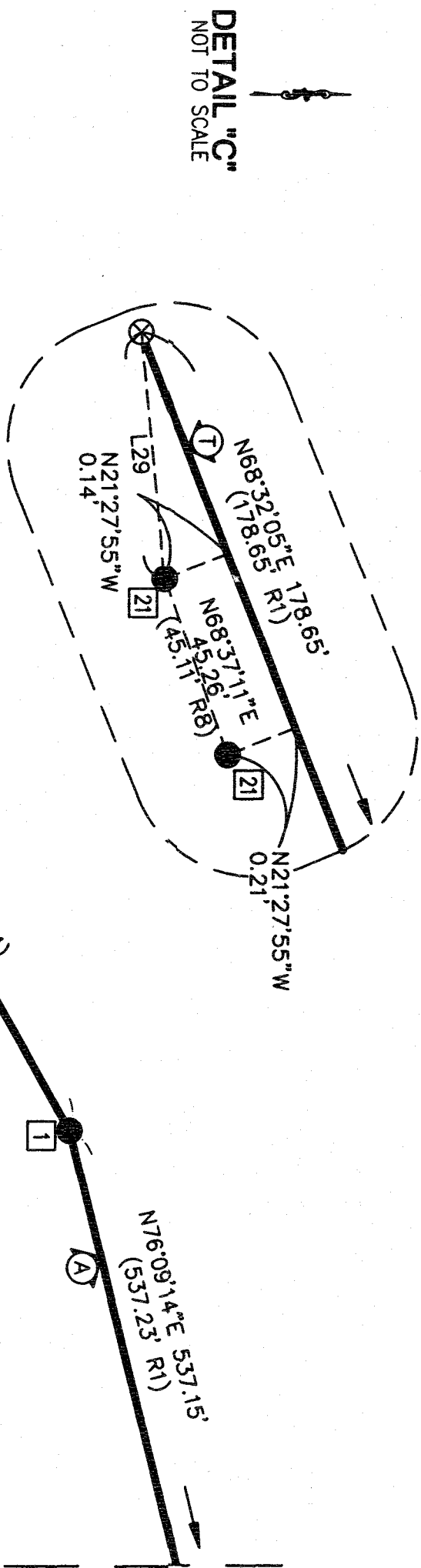
OFFICIAL RECORDS
- O.C.F.C.D.

ORANGE COUNTY FLOOD CONTROL DISTRICT
- TOP

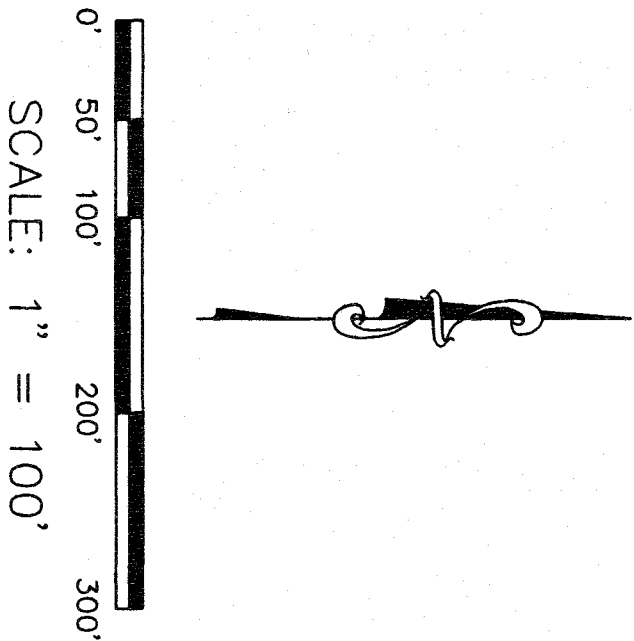
TEMPORARY CONTROL POINT

SHEET 3 OF 4 SHEETS
SEE SHEET 1 FOR BASIS OF BEARING
AND DATUM STATEMENTS AND RECORD DATA NOTE.
SEE SHEET 2 FOR MONUMENT NOTES,
ESTABLISHMENT NOTES, REFERENCES AND LEGEND.

RECORD OF SURVEY NO. 2020-1040
IN THE CITY OF YORBA LINDA, COUNTY OF ORANGE, STATE OF CALIFORNIA
COUNTY OF ORANGE-OC SURVEY ELLIOTT MEDINA, P.L.S. 9294
DATE OF SURVEY: OCTOBER 2019



LINE TABLE			
LINE #	BEARING	LENGTH	RECORD
L1	N26°30'06"E	34.99'	34.99' (R1&R3)
L2	N26°23'27"E	25.03'	25.01' (R1&R3)
L3	N04°43'21"W	185.94'	185.95' (R4)
L4	N16°09'10"E	139.18'	139.18' (R4)
L5	N34°02'11"E	124.57'	124.57' (R4)
L6	N55°34'37"E	121.59'	121.58' (R4)
L7	N59°13'01"E	123.36'	123.38' (R4)
L8	N25°30'13"E	136.15'	136.14' (R5)
L9	N73°21'43"E	120.70'	120.66' (R5)
L10	N81°56'19"E	212.39'	212.35' (R5)
L11	N76°43'57"E	227.49'	227.47' (R5)
L12	N88°15'25"W	271.89'	271.85' (R5)
L13	N87°08'09"E	283.25'	283.23' (R5)
L14	N13°58'46"E	60.63'	60.63' (R6)
L15	N28°10'35"W	86.55'	86.55' (R6)
L16	N76°36'59"W	197.55'	197.56' (R6)
L17	N78°19'00"W	139.56'	139.56' (R6)
L18	N88°58'05"E	108.87'	108.87' (R6)
L19	N83°22'04"W	243.01'	243.06' (R6)
L20	N32°48'55"W	126.74'	126.73' (R6)
L21	N39°51'17"E	99.64'	99.65' (R6)
L22	N23°40'04"W	79.09'	79.10' (R7)
L23	N01°25'36"W	49.78'	49.76' (R7)
L24	N20°41'05"E	50.42'	50.38' (R7)
L25	N33°10'41"W	114.10'	114.10' (M&R8)
L26	N52°56'07"W	131.07'	131.07' (M&R8)
L27	N59°30'17"W	206.04'	206.10' (R1)
L28	N52°21'44"E	61.95'	61.96' (R7)
L29	N68°36'42"E	107.48'	107.48' (R8)
L30	N25°23'36"W	396.76'	M& CFR (R1)



DUPLICATE

313 40

SHEET 4 OF 4 SHEETS

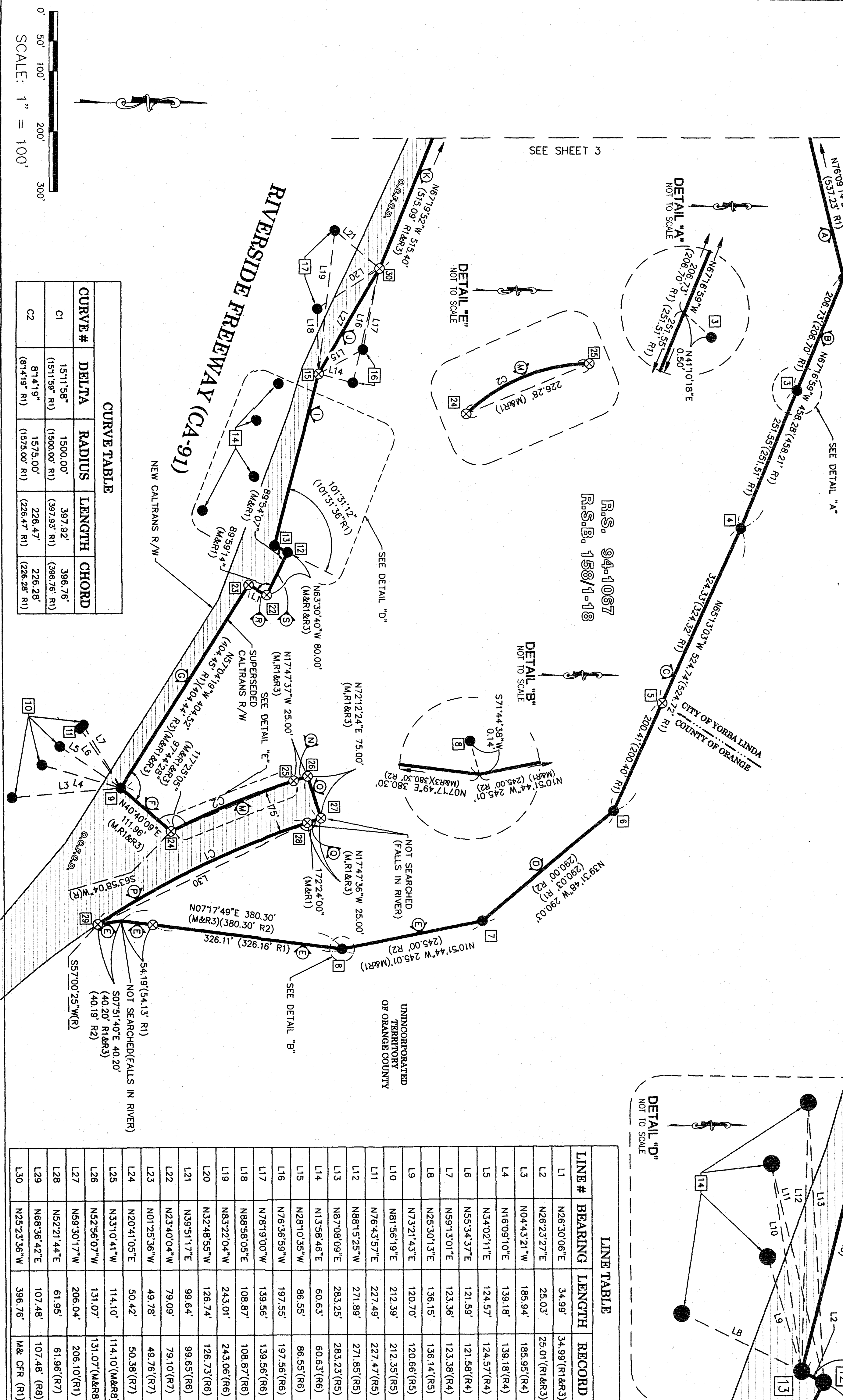
SEE SHEET 1 FOR BASIS OF BEARING
AND DATUM STATEMENTS AND RECORD DATA NOTE.

SEE SHEET 2 FOR MONUMENT NOTES,
ESTABLISHMENT NOTES, REFERENCES AND LEGEND.

RECORD OF SURVEY NO. 2020-1040

IN THE CITY OF YORBA LINDA, COUNTY OF ORANGE, STATE OF CALIFORNIA
COUNTY OF ORANGE-OC SURVEY
ELLIOTT MEDINA, P.L.S. 9294

DATE OF SURVEY: OCTOBER 2019



CURVE TABLE

CURVE #	DELTA	RADIUS	LENGTH	CHORD
C1	1511.58°	1500.00'	397.92'	396.76'
C2	814.19°	1575.00'	226.47'	226.28'

LINE TABLE

LINE #	BEARING	LENGTH	RECORD
L1	N26°30'06"E	34.99'	34.99'(R1&R3)
L2	N26°23'27"E	25.03'	25.01'(R1&R3)
L3	N04°43'21"W	185.94'	185.95'(R4)
L4	N16°09'10"E	139.18'	139.18'(R4)
L5	N34°02'11"E	124.57'	124.57'(R4)
L6	N55°34'37"E	121.59'	121.58'(R4)
L7	N59°13'01"E	123.36'	123.38'(R4)
L8	N25°30'13"E	136.15'	136.14'(R5)
L9	N73°21'43"E	120.70'	120.66'(R5)
L10	N81°56'19"E	212.39'	212.35'(R5)
L11	N76°43'57"E	227.49'	227.47'(R5)
L12	N88°15'25"W	271.89'	271.85'(R5)
L13	N87°08'09"E	283.25'	283.23'(R5)
L14	N13°58'46"E	60.63'	60.63'(R6)
L15	N28°10'35"W	86.55'	86.55'(R6)
L16	N76°36'59"W	197.55'	197.56'(R6)
L17	N78°19'00"W	139.56'	139.56'(R6)
L18	N88°58'05"E	108.87'	108.87'(R6)
L19	N83°22'04"W	243.01'	243.06'(R6)
L20	N32°48'55"W	126.74'	126.73'(R6)
L21	N39°51'17"E	99.64'	99.65'(R6)
L22	N23°40'04"W	79.09'	79.10'(R7)
L23	N01°25'36"W	49.78'	49.76'(R7)
L24	N20°41'05"E	50.42'	50.38'(R7)
L25	N33°10'41"W	114.10'	114.10'(M&R8)
L26	N52°56'07"W	131.07'	131.07'(M&R8)
L27	N59°30'17"W	206.04'	206.10'(R1)
L28	N52°21'44"E	61.95'	61.96'(R7)
L29	N68°36'42"E	107.48'	107.48'(R8)
L30	N25°23'36"W	396.76'	M& CFR (R1)

DUPLICATE