



# OC PUBLIC WORKS DEPARTMENT

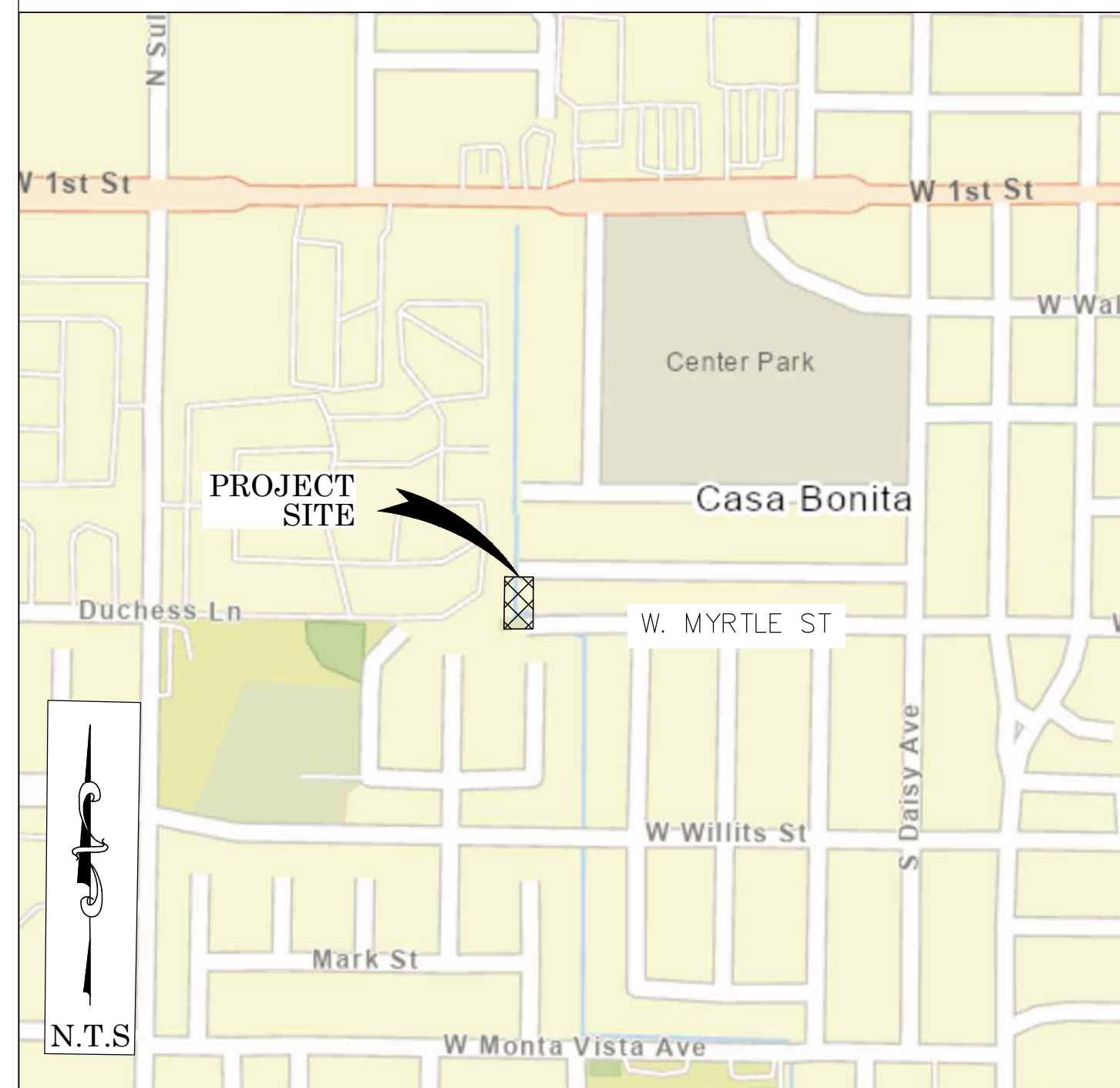
KEVIN ONUMA, DIRECTOR



## SANTA ANA GARDENS CHANNEL (F02)

### PROTECTION BARRIER

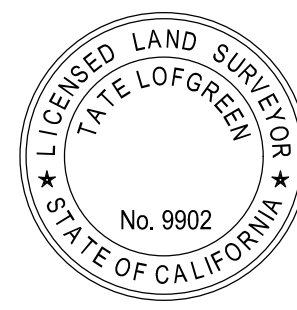
#### LOCATION MAP



#### SENIOR LAND SURVEYOR'S CERTIFICATE:

THIS MAP CORRECTLY REPRESENTS A SURVEY MADE BY ME OR UNDER MY DIRECTION IN CONFORMANCE WITH REQUIREMENTS OF THE PROFESSIONAL LAND SURVEYOR'S ACT, THIS 24 DAY OF APRIL, 2025.

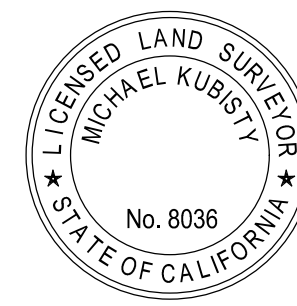
TATE LOFGREEN, PLS. SENIOR LAND SURVEYOR



#### SENIOR LAND SURVEYOR'S CERTIFICATE:

THIS MAP HAS BEEN EXAMINED IN ACCORDANCE WITH THE PROFESSIONAL LAND SURVEYOR'S ACT, THIS 24 DAY OF APRIL, 2025.

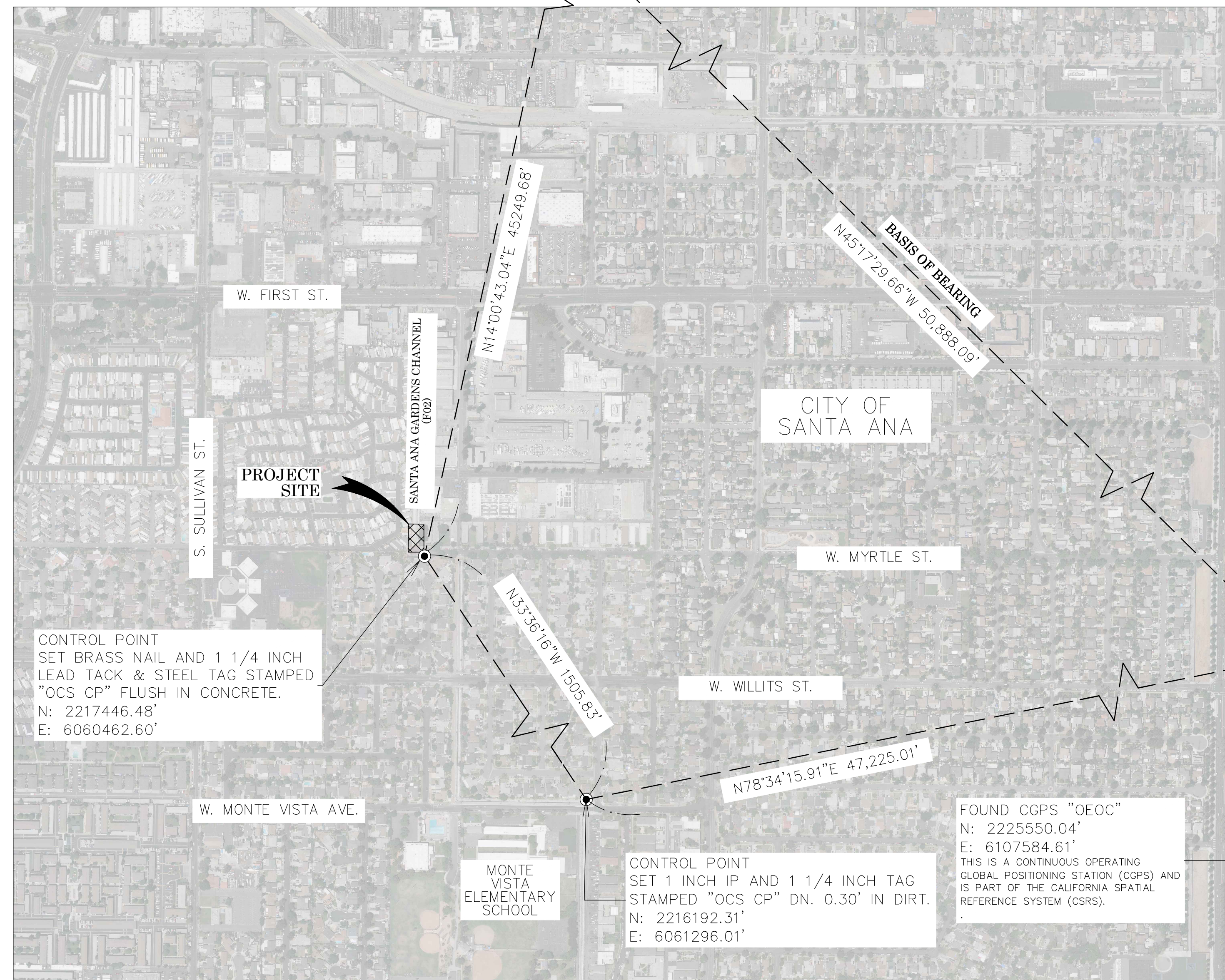
MICHAEL KUBISTY, PLS. SENIOR LAND SURVEYOR



**U.S. Survey Foot**

OC Public Works  
OC Survey/Field Services  
Boundary Analysis & Mapping

FOUND CGPS "CCCS"  
N: 2261349.77'  
E: 6071418.65'  
THIS IS A CONTINUOUS OPERATING  
GLOBAL POSITIONING STATION (CGPS) AND  
IS PART OF THE CALIFORNIA SPATIAL  
REFERENCE SYSTEM (CSRS).



CONTROL POINT  
SET BRASS NAIL AND 1 1/4 INCH  
LEAD TACK & STEEL TAG STAMPED  
"OCS CP" FLUSH IN CONCRETE.  
N: 2217446.48'  
E: 6060462.60'

CONTROL POINT  
SET 1 INCH IP AND 1 1/4 INCH TAG  
STAMPED "OCS CP" DN. 0.30' IN DIRT.  
N: 2216192.31'  
E: 6061296.01'

FOUND CGPS "OEOC"  
N: 2225550.04'  
E: 6107584.61'  
THIS IS A CONTINUOUS OPERATING  
GLOBAL POSITIONING STATION (CGPS) AND  
IS PART OF THE CALIFORNIA SPATIAL  
REFERENCE SYSTEM (CSRS).

#### BASIS OF BEARINGS

THE BASIS OF BEARINGS FOR THIS SURVEY IS BASED ON THE CALIFORNIA COORDINATE SYSTEM (CCS83), ZONE VI, NAD 83, OCS (2007.00) EPOCH ADJUSTMENT, AS DETERMINED LOCALLY BY A LINE BETWEEN CONTINUOUS GLOBAL POSITIONING STATIONS CGPS (CCCS) AND (OEOC) BEING NORTH 45°17'30" WEST AS DERIVED FROM THE COORDINATES PUBLISHED BY THE CALIFORNIA SPATIAL REFERENCE CENTER (CSRC) ALONG WITH DATA SHEETS ON FILE IN THE OFFICE OF THE ORANGE COUNTY SURVEYOR.

#### HORIZONTAL DATUM

COORDINATES SHOWN ARE BASED ON THE CALIFORNIA COORDINATE SYSTEM (CCS83), ZONE VI, NAD 83, OCS 2007.0 EPOCH ADJUSTMENT.

ALL DISTANCES SHOWN ARE GRID, UNLESS OTHERWISE NOTED. TO OBTAIN GROUND DISTANCES MULTIPLY GRID BY 1.000024991.

THE COMBINATION FACTOR SHOWN HEREON WAS DERIVED FROM POINT NUMBER 410  
N: 2217497.99'  
E: 6060436.15'

ALL DISTANCES ARE BASED ON THE U.S. SURVEY FOOT.

#### VERTICAL DATUM

O.C.S. BM. SA-181-70 ELEV. = 79.199' YEAR LEVELED: 2010

NAVD 1988 (O.C.S. 1995 ADJUSTMENT)

DESCRIPTION: FOUND 3 3/4" OCS ALUMINUM BENCHMARK DISK STAMPED "SA-181-70", SET IN THE SOUTHEAST CORNER OF THE 5.5FT. BY 15.5FT. CONCRETE CATCH BASIN. MONUMENT IS LOCATED IN THE NORTHWEST CORNER OF THE INTERSECTION OF FIRST STREET AND SULLIVAN STREET, 21FT. WESTERLY OF THE CENTERLINE OF SULLIVAN STREET AND 27FT. NORTHERLY OF THE PROLONGATION OF THE NORTH CURB ALONG FIRST STREET. MONUMENT IS SET LEVEL WITH THE SIDEWALK.

#### NOTES

THE SURVEY INFORMATION SHOWN HEREON IS TO BE USED FOR TOPOGRAPHIC RELATIONSHIPS AND BOUNDARY ONLY AND IS NOT INTENDED FOR LAND ACQUISITION. PARCELS SHOWN WITHOUT BEARING AND DISTANCES ARE FOR GRAPHICAL PURPOSES.

#### SHEET INDEX

SHEET	NO.	DESCRIPTION
1	1	TITLE SHEET
2-4	2-4	BOUNDARY ESTABLISHMENT SHEET
5	5	TOPOGRAPHIC MAP

#### PURPOSE OF SURVEY

THE PURPOSE OF THE SURVEY IS TO PROVIDE A TOPOGRAPHIC MAP AND RIGHT OF WAY ESTABLISHMENT FOR THIS PORTION OF THE SANTA ANA GARDENS CHANNEL (F02).

## TOPOGRAPHIC MAPPING PROJECT

			COUNTY OF ORANGE OC PUBLIC WORKS OC CONSTRUCTION/ SURVEY-FIELD SERVICES			
			SANTA ANA GARDENS CHANNEL PROTECTION BARRIER			
			TOPOGRAPHIC MAP			
			PROJECT LIMITS: FROM CL OF W. MYRTLE ST.			
			TO 150± NORTH			
			DATE OF SURVEY:04/15/2025		BY: LOFGREEN AND CREW	
			MAPPING		BY: T. LOFGREEN, PLS	
			OFFICE CHECK		BY: M. KUBISTY, PLS	
			FIELD CHECK		BY: T. LOFGREEN, PLS	
			SCALE: N.T.S.		W.O. #EF38016	
			FILE: SAG BARRIER PROTECTION 2025.DWG			
			FILE # #####			
REVISIONS						

MARK	DATE	ITEM
------	------	------

SHEET NO.	
1	
of	
5	



MONUMENT NOTES

- 11

FOUND 3" BRASS DISK WITH PUNCH IN WELL MONUMENT PER R1, DN 1.0' IN ASPHALT, ACCEPTED AS THE CENTERLINE INTERSECTION OF FIRST STREET AND SULLIVAN STREET.
- 12

FOUND 3" BRASS DISK WITH PUNCH IN WELL MONUMENT PER R3, DN 1.0' IN ASPHALT, N00°47'43"E 0.08' FROM THE CENTERLINE INTERSECTION OF FIRST STREET AND CENTER STREET, ACCEPTED AS POINT ON N'LY PROLONGATION OF THE CENTERLINE OF CENTER STREET.
- 13

FOUND 3" BRASS DISK WITH CHISELED X IN WELL MONUMENT PER R4, DN 1.0' IN ASPHALT, 0.11' N'LY OF LINE ESTABLISHMENT **A**.
- 14

FOUND 3" BRASS DISK WITH PUNCH IN WELL MONUMENT PER R2, DN 1.0' IN ASPHALT, ACCEPTED AS THE CENTERLINE INTERSECTION OF FIRST STREET AND DAISY STREET.
- 15

FOUND SPIKE AND WASHER STAMPED "SANTA ANA SURVEY" PER R5, FLUSH IN ASPHALT, ACCEPTED AS THE CENTERLINE INTERSECTION OF CENTER STEET AND CHESTNUT AVENUE.
- 16

FOUND BROKEN GEAR SPIKE IN LIEU OF 2" IP STAMPED "RE 4484" PER R6, FLUSH IN ASPHALT, ACCEPTED AS THE CENTERLINE INTERSECTION OF MYRTLE STREET AND SHELLEY STREET.
- 17

FOUND GEAR SPIKE AND 1 1/2" WASHER STAMPED "LS 5411" IN LIEU OF 2" IP STAMPED "RE 4484" PER R6, FLUSH IN ASPHALT, 0.07' N'LY OF LINE ESTABLISHMENT **E**.
- 18

FOUND BRASS NAIL W/ TAG STAMPED "LS 5411" IN LIEU OF PK NAIL W/ TAG STAMPED "LS 5411" PER R7, FLUSH IN CONCRETE, ACCEPTED AS THE CENTERLINE INTERSECTION OF MYRTLE STREET AND DAISY AVENUE.
- 19

FOUND 1" IP W/ TAG STAMPED "RCE 9808" PER R9, UP 0.15' IN DIRT, ACCEPTED AS POINT ON LINE ESTABLISHMENT **C**.
- 110

FOUND 1" IP W/ NO TAG PER R9, UP 0.25' IN DIRT, ACCEPTED AS POINT ON LINE ESTABLISHMENT **L**.
- 111

FOUND 1" IP W/ NO TAG PER R9 FLUSH IN DIRT, ACCEPTED AS POINT ON LINE ESTABLISHMENT **L**.
- 112

FOUND 1" IP W/ NO TAG PER R9, UP 0.15' IN DIRT, 0.03' E'LY OF LINE ESTABLISHMENT **L**.
- 113

FOUND 1" IP W/ NO TAG PER R9, UP 0.15' IN DIRT, 0.11' E'LY OF LINE ESTABLISHMENT **L**.
- 114

FOUND GEAR SPIKE W/ TAG STAMPED "LS 5411" PER R12, FLUSH IN ASPHALT, ACCEPTED AS THE CENTERLINE INTERSECTION OF SHELLEY STREET AND WILLITS STREET.
- 115

FOUND GEAR SPIKE AND 1 1/2" WASHER STAMPED "LS 5411" PER R13, FLUSH IN ASPHALT, ACCEPTED AS THE CENTERLINE INTERSECTION OF NORTH DIAMOND STREET AND WILLITS STREET.
- 116

FOUND GEAR SPIKE AND 1 1/2" WASHER STAMPED "LS 5411" PER R13, FLUSH IN ASPHALT, ACCEPTED AS THE CENTERLINE INTERSECTION OF SOUTH DIAMOND STREET AND WILLITS STREET.
- 117

FOUND GEAR SPIKE AND WASHER STAMPED "LS 5411" PER R14, FLUSH IN ASPHALT, ACCEPTED AS THE CENTERLINE INTERSECTION OF MONTE VISTA AVENUE AND CENTER STREET.
- 118

FOUND GEAR SPIKE AND WASHER STAMPED "LS 5411" PER R15, FLUSH IN ASPHALT, ACCEPTED AS THE CENTERLINE INTERSECTION OF MONTE VISTA AVENUE AND TOWNSEND STREET.
- 119

FOUND CHISELED X, NO REFERENCE, IN CONCRETE SIDEWALK N50°12'16"E 0.11' FROM EC OF THE S'LY RIGHT OF WAY KNUCKLE OF MYRTLE STREET.
- 120

FOUND CHISELED X NO REFERENCE, 0.08' N'LY OF S'LY RIGHT OF WAY OF MYRTLE STREET IN CONCRETE SIDEWALK.
- 121

FOUND 2" IP W/ TAG STAMPED "RE 4484" PER R6, DN. 1.0' IN DIRT, N47°08'45"W 0.13' FROM ESTABLISHMENT NOTE **AO**.
- 122

FOUND 1" IP PER R16, DN. 1.7', E'LY 0.08' FROM LINE ESTABLISHMENT **AO**.
- 123

FOUND 1" IP W/ TAG STAMPED "RE 4484" PER R6, UP 0.3' IN DIRT, LEANING W'LY 0.28' FROM LINE ESTABLISHMENT **AO**.
- 124

FOUND 1" IP W/ TAG STAMPED "RE 4484" PER R6 UP 0.3' IN DIRT, LEANING W'LY 0.11' FROM LINE ESTABLISHMENT **AN**.
- 125

FOUND 1" IP W/ TAG STAMPED "RE 4484" PER R6, UP 0.15' IN DIRT, LEANING W'LY 0.24' FROM LINE ESTABLISHMENT **AO**.
- 126

FOUND 1" IP PER R6, DN 2.0' IN DIRT, W'LY 0.11' FROM LINE ESTABLISHMENT **AE**.
- 127

FOUND 1 1/2" IP PER R6, UP 0.05' IN DIRT, ACCEPTED AS POINT ON LINE ESTABLISHMENT **AN**.
- 128

FOUND 2" IP W/ TAG STAMPED "RE 4484" PER R6, DN 1.0' IN DIRT, ACCEPTED AS POINT ON LINE ESTABLISHMENT **AN**.
- 129

FOUND 1" IP W/ TAG STAMPED "RE 4484" PER R6, UP 0.1' IN DIRT, W'LY 0.12' FROM LINE ESTABLISHMENT **AO**.
- 130

FOUND 1" IP PER R6, UP 0.1' IN DIRT, W'LY 0.05' FROM LINE ESTABLISHMENT **AN**.
- 131

FOUND 1" IP PER R6, FLUSH IN DIRT, W'LY 0:18' FROM LINE ESTABLISHMENT **AO**.
- 132

FOUND DISTURBED 2" HOLLOW IP PER R6, DN. 0.1' IN DIRT, N82°33'34"E 0.73' FROM POINT ESTABLISHMENT **AO**.
- 133

FOUND DISTURBED 1 1/2" HOLLOW IP PER R16, DN. 0.2' IN DIRT, N89°19'08"W 0.11' FROM ESTABLISHMENT NOTE **AO**.
- 134

FOUND DISTURBED 1" HOLLOW IP PER R6, DN. 0.25' IN DIRT, S'LY 0.16' FROM LINE ESTABLISHMENT **AO**.
- 135

FOUND 1" IP WITH BRASS NAIL PER R6 DN. 0.3' IN DIRT, S'LY 0.25' FROM LINE ESTABLISHMENT **AO**.
- 136

FOUND 2" IP WITH TAG STAMPED "RE 4484" PER R17 DN. 0.15' IN DIRT, ACCEPTED AS EC OF N'LY RIGHT OF WAY OF MONTE VISTA AVENUE.
- 137

FOUND 2" IP WITH TAG STAMPED "RE 4484" PER R17, DN. 0.35' IN DIRT, BC OF THE W'LY RIGHT OF WAY OF TOWNSEND STREET.
- 138

FOUND GEAR SPIKE AND WASHER STAMPED "LS 5411" PER R19, FLUSH IN ASPHALT, ACCEPTED AS THE CENTERLINE INTERSECTION OF WILLITS STREET AND WOOD STREET.
- 139

FOUND GEAR SPIKE AND WASHER STAMPED "LS 5411" PER R20, FLUSH IN ASPHALT, N89°20'13"W 0.13' FROM THE CENTERLINE INTERSECTION OF MARK STREET AND SHELLEY STREET.

ESTABLISHMENT NOTES

- A**

ESTABLISHED THE CENTERLINE OF FIRST STREET BY HOLDING A LINE BETWEEN MONUMENT NOTES **11** AND **14**.
- B**

ESTABLISHED BY INTERSECTION HOLDING A LINE E'LY FROM MONUMENT NOTE **11** ALONG LINE ESTABLISHMENT **A**, AND A LINE N'LY FROM MONUMENT NOTES **15**, BETWEEN MONUMENT NOTES **12** AND **15**.
- C**

ESTABLISHED THE CENTERLINE OF CENTER STREET HOLDING A LINE BETWEEN MONUMENT NOTE **15** AND ESTABLISHMENT NOTE **C**.
- E**

ESTABLISHED THE CENTERLINE OF DAISY STREET HOLDING A LINE BETWEEN MONUMENTS **14** AND **18**.
- F**

ESTABLISHED THE N'LY RIGHT OF WAY OF FIRST STREET 52.00' N'LY OF, PERPENDICULAR TO, AND PARALLEL WITH LINE ESTABLISHMENT **A** PER R11.
- G**

ESTABLISHED THE S'LY RIGHT OF WAY OF FIRST STREET 50.00' S'LY OF, PERPENDICULAR TO, AND PARALLEL WITH LINE ESTABLISHMENT **A** PER R10.
- H**

ESTABLISHED THE S'LY RIGHT OF WAY OF FIRST STREET 55.00' S'LY OF, PERPENDICULAR TO, AND PARALLEL WITH LINE ESTABLISHMENT **A** PER R9.
- I**

ESTABLISHED THE N'LY RIGHT OF WAY OF MYRTLE STREET 30.00' N'LY OF, PERPENDICULAR TO, AND PARALLEL WITH LINE ESTABLISHMENT **E** PER R9.
- J**

ESTABLISHED W'LY LINE OF PARCEL 703 OF R18 255.00', W'LY OF, PERPENDICULAR TO, AND PARALLEL WITH LINE ESTABLISHMENT **C** PER R8, AND HOLDING A LINE BETWEEN ESTABLISHMENT NOTES **U** AND **V**.
- K**

ESTABLISHED E'LY LINE OF PARCEL 703 OF R18 AND W'LY LINE OF PARCEL 704 OF R18 245.00' W'LY OF, PERPENDICULAR TO, AND PARALLEL WITH LINE ESTABLISHMENT **C** PER R8 AND R9, AND HOLDING A LINE BETWEEN ESTABLISHMENT NOTES **C** AND **D**.
- L**

ESTABLISHED E'LY LINE OF PARCEL 704 OF R18 215.00' W'LY OF, PERPENDICULAR TO, AND PARALLEL WITH LINE ESTABLISHMENT **C** PER R9, AND HOLDING A LINE BETWEEN ESTABLISHMENT NOTES **D** AND **R**.
- M**

S.F.N. ESTABLISHED BY INTERSECTION HOLDING A LINE 255.00' W'LY OF, PERPENDICULAR TO, AND PARALLEL WITH LINE ESTABLISHMENT **C** AND LINE ESTABLISHMENT **G** PER R8.
- N**

S.F.N. ESTABLISHED BY INTERSECTION HOLDING A LINE 255.00' W'LY OF, PERPENDICULAR TO, AND PARALLEL WITH THE S'LY PROLONGATION OF LINE ESTABLISHMENT **C** FROM MONUMENT NOTE **15** AND THE W'LY PROLONGATION OF LINE ESTABLISHMENT **E** FROM MONUMENT **16** PER R9.
- O**

S.F.N. ESTABLISHED BY INTERSECTION HOLDING A LINE 245.00' W'LY OF, PERPENDICULAR TO, AND PARALLEL WITH LINE ESTABLISHMENT **C** AND LINE ESTABLISHMENT **C** PER R8 AND R9.
- P**

S.F.N. ESTABLISHED BY INTERSECTION HOLDING A LINE 245.00' W'LY OF, PERPENDICULAR TO, AND PARALLEL WITH THE S'LY PROLONGATION OF LINE ESTABLISHMENT **C** FROM MONUMENT NOTE **15** AND THE W'LY PROLONGATION OF LINE ESTABLISHMENT **E** FROM MONUMENT **16** PER R9.
- Q**

S.F.N. ESTABLISHED BY INTERSECTION HOLDING A LINE 215.00' W'LY OF, PERPENDICULAR TO, AND PARALLEL WITH LINE ESTABLISHMENT **C** AND LINE ESTABLISHMENT **G** PER R8 AND R9.
- R**

S.F.N. ESTABLISHED BY INTERSECTION HOLDING A LINE 215.00' W'LY OF, PERPENDICULAR TO, AND PARALLEL WITH THE S'LY PROLONGATION OF LINE ESTABLISHMENT **C** FROM MONUMENT NOTE **15** AND THE W'LY PROLONGATION OF LINE ESTABLISHMENT **E** FROM MONUMENT **16** PER R9.
- S**

ESTABLISHED THE CENTERLINE OF SHELLEY STREET HOLDING A LINE BETWEEN MONUMENTS **16** AND **14**.
- T**

ESTABLISHED THE CENTERLINE OF WILLITS STREET HOLDING A LINE BETWEEN MONUMENTS **14** AND **16**.
- U**

ESTABLISHED THE CENTERLINE OF MONTE VISTA AVENUE HOLDING A LINE BETWEEN MONUMENTS **17** AND **18**.
- V**

ESTABLISHED THE S'LY RIGHT OF WAY OF MYRTLE STREET 30.00' S'LY OF, PERPENDICULAR TO, AND PARALLEL WITH LINE ESTABLISHMENT **E** PER R16.
- W**

ESTABLISHED THE S'LY RIGHT OF WAY KNUCKLE OF MYRTLE STREET HOLDING RECORD DATA PER R16 COMMENCING AT ESTABLISHMENT NOTE **C** AND TERMINATING AT LINE ESTABLISHMENT **V**.
- X**

ESTABLISHED EC S'LY RIGHT OF WAY OF MYRTLE STREET HOLDING RECORD DISTANCE PER R16 W'LY FROM ESTABLISHMENT NOTE **AO** ALONG LINE ESTABLISHMENT **V**.
- Y**

ESTABLISHED THE N'LY RIGHT OF WAY OF WILLITS STREET 40.00' N'LY OF, PERPENDICULAR TO, AND PARALLEL WITH LINE ESTABLISHMENT **I** PER R16.
- Z**

ESTABLISHED THE S'LY RIGHT OF WAY OF WILLITS STREET 40.00' S'LY OF, PERPENDICULAR TO, AND PARALLEL WITH LINE ESTABLISHMENT **I** PER R16.
- AA**

ESTABLISHED THE N'LY RIGHT OF WAY OF WILLITS STREET 42.00' N'LY OF, PERPENDICULAR TO, AND PARALLEL WITH LINE ESTABLISHMENT **I** PER R6.
- AB**

ESTABLISHED THE S'LY RIGHT OF WAY OF WILLITS STREET 42.00' S'LY OF, PERPENDICULAR TO, AND PARALLEL WITH LINE ESTABLISHMENT **I** PER R6.
- AC**

ESTABLISHED THE N'LY RIGHT OF WAY OF MONTE VISTA AVENUE 30.00' N'LY OF, PERPENDICULAR TO, AND PARALLEL WITH LINE ESTABLISHMENT **U** PER R6 AND R17.
- AD**

ESTABLISHED THE S'LY RIGHT OF WAY OF MONTE VISTA AVENUE 30.00' S'LY OF, PERPENDICULAR TO, AND PARALLEL WITH LINE ESTABLISHMENT **U** PER R6 AND R17.
- AE**

ESTABLISHED THE W'LY LINE OF LOT A OF PARCEL 702 OF R18 195.28' W'LY OF, PERPENDICULAR TO, AND PARALLEL WITH LINE ESTABLISHMENT **S** PER R16, AND HOLDING A LINE BETWEEN ESTABLISHMENT NOTES **AF** AND **AO**.
- AF**

S.F.N. ESTABLISHED BY INTERSECTION HOLDING A LINE 195.28' W'LY OF, PERPENDICULAR TO, AND PARALLEL WITH LINE ESTABLISHMENT **S** AND LINE ESTABLISHMENT **V** PER R6 AND R16.
- AG**

S.F.N. ESTABLISHED BY INTERSECTION HOLDING A LINE 195.28' W'LY OF, PERPENDICULAR TO, AND PARALLEL WITH LINE ESTABLISHMENT **S** AND LINE ESTABLISHMENT **Y** PER R6 AND R16.
- AH**

ESTABLISHED THE W'LY LINE OF LOT B OF PARCEL 702 OF R18 195.28' W'LY OF, PERPENDICULAR TO, AND PARALLEL WITH LINE ESTABLISHMENT **S** PER R16, AND HOLDING A LINE BETWEEN ESTABLISHMENT NOTES **AI** AND **AO**.
- AI**

S.F.N. ESTABLISHED BY INTERSECTION HOLDING A LINE 195.28' W'LY OF, PERPENDICULAR TO, AND PARALLEL WITH THE S'LY PROLONGATION OF LINE ESTABLISHMENT **C** FROM MONUMENT NOTE **14** AND LINE ESTABLISHMENT **I** PER R16.
- AJ**

S.F.N. ESTABLISHED BY INTERSECTION HOLDING A LINE 195.28' W'LY OF, PERPENDICULAR TO, AND PARALLEL WITH THE S'LY PROLONGATION OF LINE ESTABLISHMENT **C** FROM MONUMENT NOTE **14** AND LINE ESTABLISHMENT **AO** PER R16.
- AK**

ESTABLISHED THE W'LY LINE OF OF PARCEL 701 OF R18 187.28' W'LY OF, PERPENDICULAR TO, AND PARALLEL WITH LINE ESTABLISHMENT **C** PER R6, AND HOLDING A LINE BETWEEN ESTABLISHMENT NOTES **AL** AND **AO**.
- AL**

S.F.N. ESTABLISHED BY INTERSECTION HOLDING A LINE 187.28' W'LY OF, PERPENDICULAR TO, AND PARALLEL WITH LINE ESTABLISHMENT **S** AND LINE ESTABLISHMENT **V** PER R6.
- AM**

S.F.N. ESTABLISHED BY INTERSECTION HOLDING A LINE 187.28' W'LY OF, PERPENDICULAR TO, AND PARALLEL WITH THE S'LY PROLONGATION OF LINE ESTABLISHMENT **S** FROM MONUMENT NOTE **14** AND LINE ESTABLISHMENT **AO**.
- AN**

ESTABLISHED THE E'LY LINE OF OF PARCEL 701 OF R18 145.28' W'LY OF, PERPENDICULAR TO, AND PARALLEL WITH LINE ESTABLISHMENT **S** PER R6, AND HOLDING A LINE BETWEEN ESTABLISHMENT NOTES **AO** AND **AO**.
- AO**

S.F.N. ESTABLISHED BY INTERSECTION HOLDING A LINE 145.28' W'LY OF, PERPENDICULAR TO, AND PARALLEL WITH LINE ESTABLISHMENT **S** AND LINE ESTABLISHMENT **V** PER R6.
- AP**

S.F.N. ESTABLISHED BY INTERSECTION HOLDING A LINE 145.28' W'LY OF, PERPENDICULAR TO, AND PARALLEL WITH THE S'LY PROLONGATION OF LINE ESTABLISHMENT **C** FROM MONUMENT NOTE **14** AND A LINE 50.00' N'LY OF AND PARALLEL WITH LINE ESTABLISHMENT **U** PER R6.
- AO**

ESTABLISHED THE N'LY LINE OF PARCEL 701 OF R18 50.00' N'LY OF, PERPENDICULAR TO, AND PARALLEL WITH LINE ESTABLISHMENT **U** PER R6, AND HOLDING A LINE BETWEEN ESTABLISHMENT NOTES **AR** AND **AS**.
- AR**

ESTABLISHED SE'LY CURVE OF PARCEL 701 OF R18 HOLDING A CURVE BETWEEN MONUMENTS **16**, **17**, AND RECORD RADIUS PER R17.
- AS**

S.F.N. ESTABLISHED BY INTERSECTION HOLDING A LINE 50.00' N'LY OF, PERPENDICULAR TO, AND PARALLEL WITH LINE ESTABLISHMENT **S** AND A LINE TANGENT TO **AR** PER R17.
- AT**

ESTABLISHED E'LY LINE OF PARCEL 701 OF R18 HOLDING RECORD CURVATURE INFORMATION BETWEEN MONUMENT **17** AND ESTABLISHMENT NOTE **AS**.
- AL**

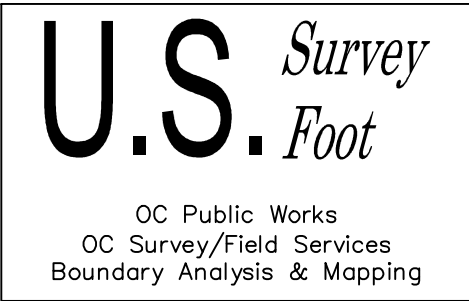
S.F.N. ESTABLISHED CENTERLINE INTERSECTION OF MARK STREET AND TOWNSEND STREET BY TIES PER R21.
- AV**

ESTABLISHED BY INTERSECTION HOLDING A LINE S'LY FROM MONUMENT NOTE **14** ALONG THE S'LY PROLONGATION OF LINE ESTABLISHMENT **S** AND A LINE W'LY FROM MONUMENT NOTE **19** AND ALONG THE W'LY PROLONGATION OF LINE ESTABLISHMENT **AO**.
- AW**

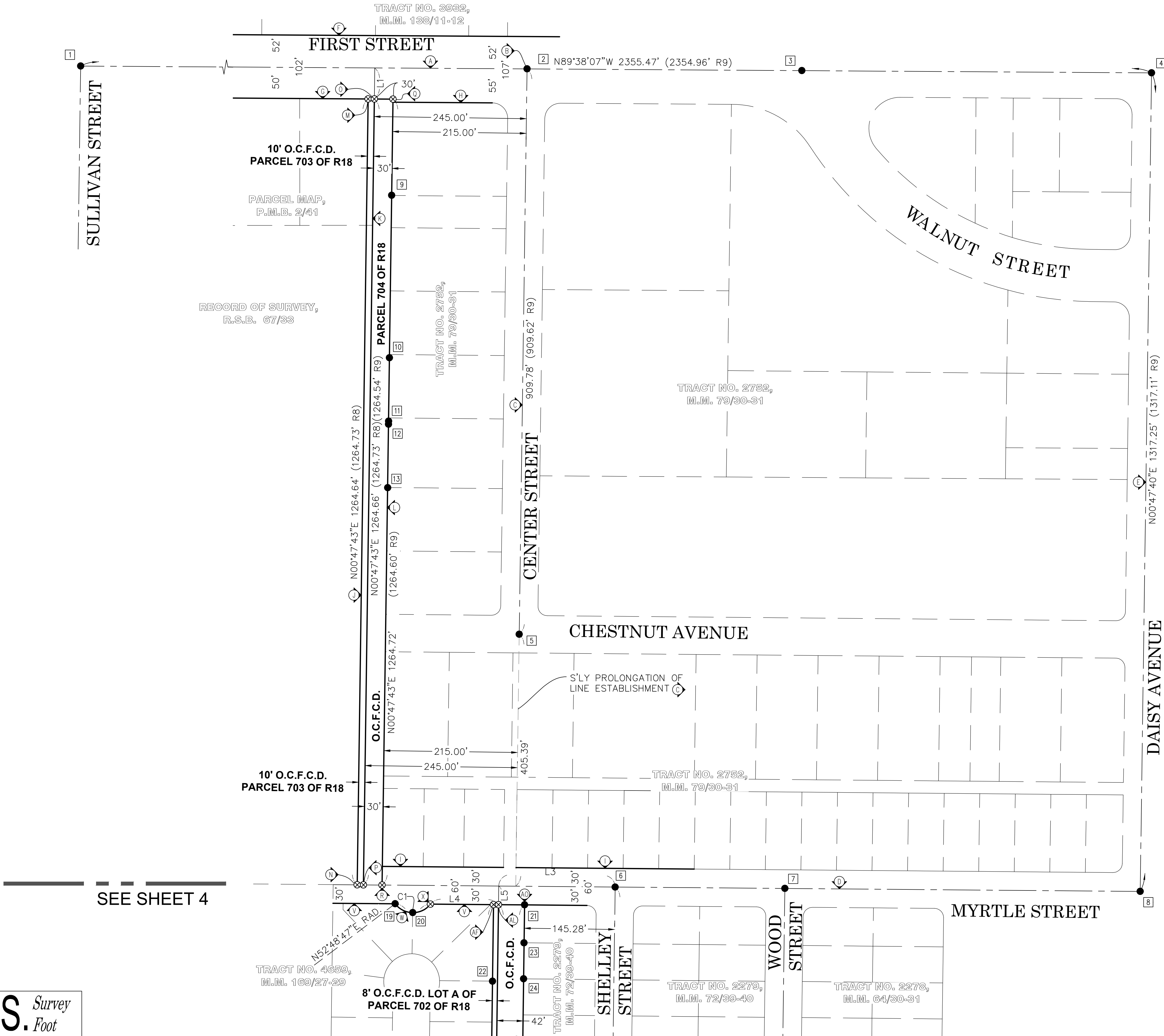
ESTABLISHED CENTERLINE OF MARK STREET HOLDING A LINE BETWEEN ESTABLISHMENT NOTES **AO** AND **AO**.

REFERENCES

- (R1) = CORNER RECORD, C.R. 2008–1100
- (R2) = CORNER RECORD, C.R. 2008–2663
- (R3) = CORNER RECORD, C.R. 2008–1104
- (R4) = CORNER RECORD, C.R. 2008–2665
- (R5) = CORNER RECORD, C.R. 2007–1945
- (R6) = TRACT NO. 2279, M.M. 72/39–40
- (R7) = CORNER RECORD, C.R. 2011–3417
- (R8) = RECORD OF SURVEY, R.S.B. 67/33
- (R9) = TRACT NO. 2752, M.M. 79/30–31
- (R10) = PARCEL MAP, P.M.B. 2/41
- (R11) = TRACT NO. 3932, M.M. 138/11–12
- (R12) = CORNER RECORD, C.R. 2011–1323
- (R13) = CORNER RECORD, C.R. 2011–1328
- (R14) = CORNER RECORD, C.R. 2011–1312
- (R15) = CORNER RECORD, C.R. 2011–1315
- (R16) = TRACT NO. 4659, M.M. 169/27–29
- (R17) = TRACT NO. 2278, M.M. 64/30–31
- (R18) = O.C.F.C.D., O.R. 11167–340
- (R19) = CORNER RECORD, C.R. 2011–1324
- (R20) = CORNER RECORD, C.R. 2011–1327
- (R21) = CORNER RECORD, C.R. 2011–1326



			COUNTY OF ORANGE OC PUBLIC WORKS OC SURVEY/FIELD SERVICES/BOUNDARY ANALYSIS & MAPPING			
			SANTA ANA GARDENS CHANNEL PROTECTION BARRIER			
			TOPOGRAPHIC MAP			
			FROM CL OF W. MYRTLE ST.			
			TO 150± NORTH			
			DATE OF SURVEY:04/15/2025		BY: LOFGREEN AND CREW	SHEET NO.  2  of  5
			BOUNDARY MAPPING			
			OFFICE CHECK		BY: M. KUBISTY, PLS	
			FIELD CHECK		BY: T. LOFGREEN, PLS	
			SCALE: N.T.S.		W.O. #F38016	
FILE:SANTA ANA GARDENS_BOUNDARY_2019.DWG						
MARK	DATE	ITEM	REVISIONS			



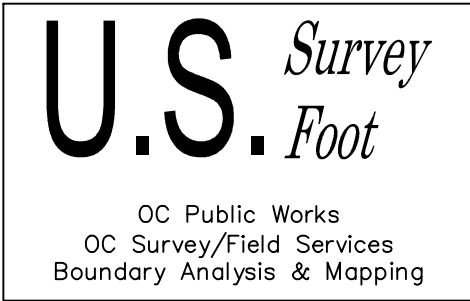
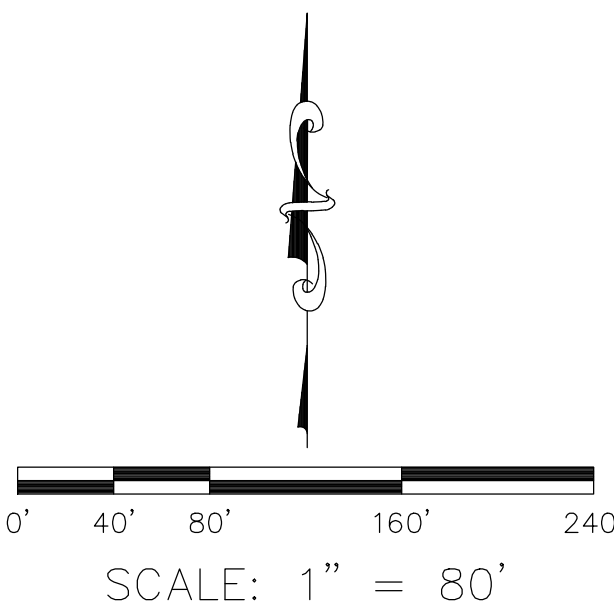
**NOTES**  
LOT LINES NOT SHOWN IN BOLD AND NOT DIMENSIONED ARE FOR GRAPHICAL PRESENTATION ONLY.

- LEGEND**
- FOUND MONUMENT AS NOTED
  - ⊗ SEARCHED FOUND NOTHING

- REFERENCES**
- (R1) = CORNER RECORD, C.R. 2008-1100
  - (R2) = CORNER RECORD, C.R. 2008-2663
  - (R3) = CORNER RECORD, C.R. 2008-1104
  - (R4) = CORNER RECORD, C.R. 2008-2665
  - (R5) = CORNER RECORD, C.R. 2007-1945
  - (R6) = TRACT NO. 2279, M.M. 72/39-40
  - (R7) = CORNER RECORD, C.R. 2011-3417
  - (R8) = RECORD OF SURVEY, R.S.B. 67/33
  - (R9) = TRACT NO. 2752, M.M. 79/30-31
  - (R10) = PARCEL MAP, P.M.B. 2/41
  - (R11) = TRACT NO. 3932, M.M. 138/11-12
  - (R12) = CORNER RECORD, C.R. 2011-1323
  - (R13) = CORNER RECORD, C.R. 2011-1328
  - (R14) = CORNER RECORD, C.R. 2011-1312
  - (R15) = CORNER RECORD, C.R. 2011-1315
  - (R16) = TRACT NO. 4659, M.M. 169/27-29
  - (R17) = TRACT NO. 2278, M.M. 64/30-31
  - (R18) = O.C.F.C.D., O.R. 11167-340
  - (R19) = CORNER RECORD, C.R. 2011-1324
  - (R20) = CORNER RECORD, C.R. 2011-1327
  - (R21) = CORNER RECORD, C.R. 2011-1326

LINE TABLE			
LINE #	BEARING	LENGTH	RECORD
L1	N00°47'43"E	50.00'	—
L2	N89°31'01"W	187.74'	188.10' (R9)
L3	N89°31'01"W	187.28'	187.28' (R6)
L4	N89°31'01"W	109.34'	109.34' (R16)
L5	N00°46'14"E	30.00'	—

CURVE TABLE			
CURVE #	DELTA	RADIUS	LENGTH
C1	104°39'37" 104°39'36"(R16)	36.00' 36.00'(R16)	65.76' 65.76'(R16)



			COUNTY OF ORANGE OC PUBLIC WORKS OC SURVEY/FIELD SERVICES/BOUNDARY ANALYSIS & MAPPING		
			SANTA ANA GARDENS CHANNEL PROTECTION BARRIER		
			TOPOGRAPHIC MAP		
			FROM CL OF W. MYRTLE ST.		
			TO 150± NORTH		
			DATE OF SURVEY:04/15/2025		SHEET NO.  3 of  5
			BOUNDARY MAPPING		
			OFFICE CHECK		
			FIELD CHECK		
			SCALE: 1" = 80'      W.O. #CF38016      FILE NO:###-###		
MARK	DATE	ITEM	REVISIONS		
			FILE:SANTA ANA GARDENS_BOUNDARY_2019.DWG		

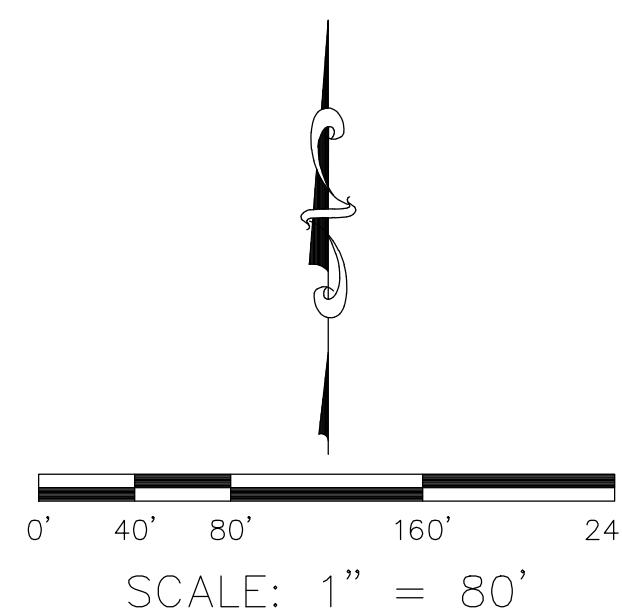
TRACT NO. 2752,  
M.M. 79/30-31

R/W SHOWN HEREON IN BOLD ESTABLISHED BY SURVEY.  
THE LOT LINES ARE FOR GRAPHICAL PRESENTATION  
ONLY.

● FOUND MONUMENT AS NOTED  
⊗ SEARCHED FOUND NOTHING

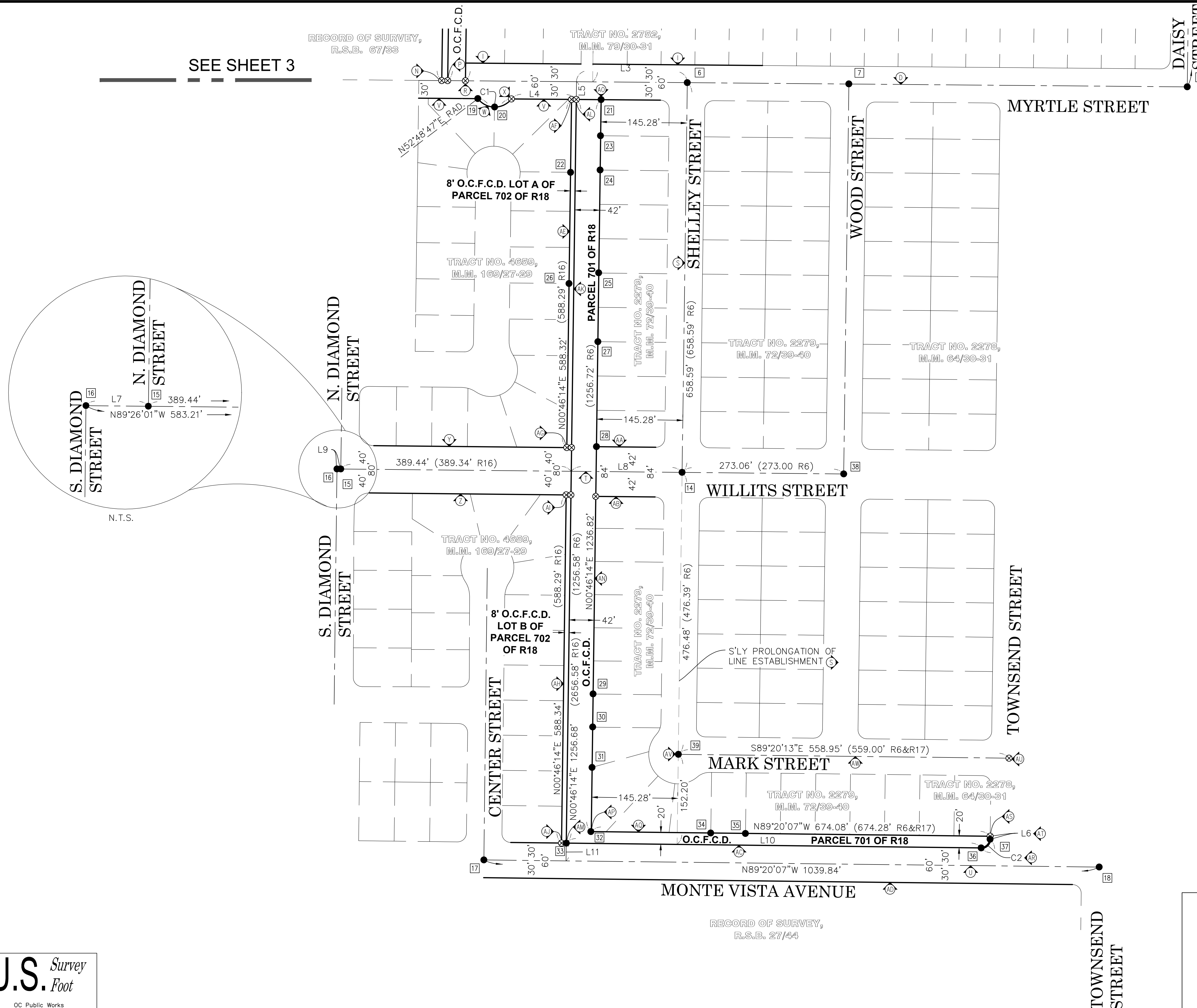
(R1) = CORNER RECORD, C.R. 2008-1100  
(R2) = CORNER RECORD, C.R. 2008-2663  
(R3) = CORNER RECORD, C.R. 2008-1104  
(R4) = CORNER RECORD, C.R. 2008-2665  
(R5) = CORNER RECORD, C.R. 2007-1945  
(R6) = TRACT NO. 2279, M.M. 72/39-40  
(R7) = CORNER RECORD, C.R. 2011-3417  
(R8) = RECORD OF SURVEY, R.S.B. 67/33  
(R9) = TRACT NO. 2752, M.M. 79/30-31  
(R10) = PARCEL MAP, P.M.B. 2/41  
(R11) = TRACT NO. 3932, M.M. 138/11-12  
(R12) = CORNER RECORD, C.R. 2011-1323  
(R13) = CORNER RECORD, C.R. 2011-1328  
(R14) = CORNER RECORD, C.R. 2011-1312  
(R15) = CORNER RECORD, C.R. 2011-1315  
(R16) = TRACT NO. 4659, M.M. 169/27-29  
(R17) = TRACT NO. 2278, M.M. 64/30-31  
(R18) = O.C.F.C.D., O.R. 11167-340  
(R19) = CORNER RECORD, C.R. 2011-1324  
(R20) = CORNER RECORD, C.R. 2011-1327  
(R21) = CORNER RECORD, C.R. 2011-1326

CURVE TABLE			
CURVE #	DELTA	RADIUS	LENGTH
C1	104°39'36" 104°39'36"(R16)	36.00' 36.00'(R16)	65.76' 65.76'(R16)
C2	89°15'43" 89°54'18"(R17)	15.00' 15.00'(R17)	5.07' 5.02'(R17)

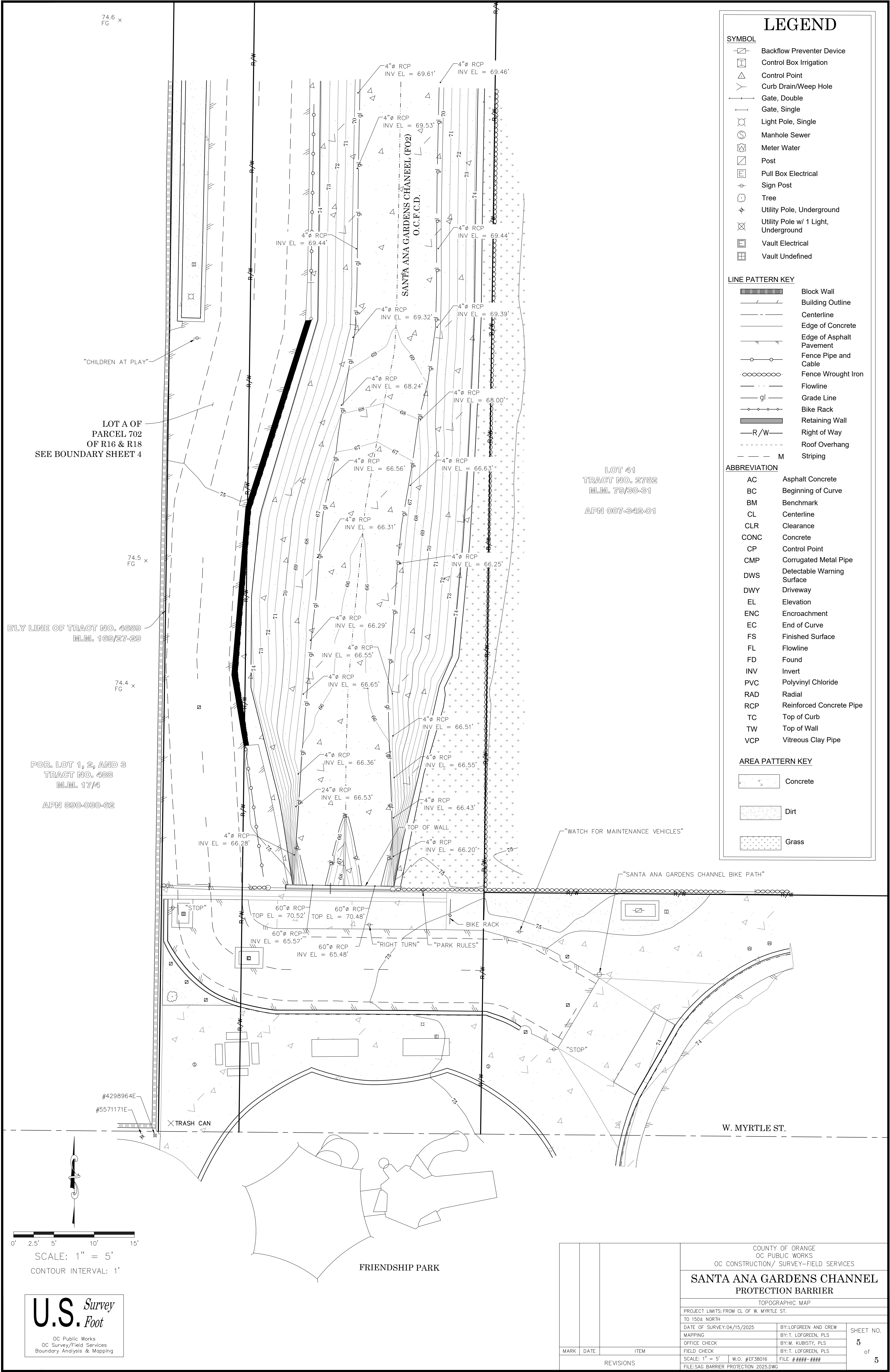


			COUNTY OF ORANGE OC PUBLIC WORKS OC SURVEY/FIELD SERVICES/BOUNDARY ANALYSIS & MAPPING			SHEET NO. 4 of 5
			SANTA ANA GARDENS CHANNEL PROTECTION BARRIER			
			TOPOGRAPHIC MAP			
			FROM CL OF W. MYRTLE ST.			
			TO 150± NORTH			
			DATE OF SURVEY: 04/15/2025		BY: LOFGREEN AND CREW	
			BOUNDARY MAPPING		BY: T. LOFGREEN, PLS	
			OFFICE CHECK		BY: M. KUBISTY, PLS	
			FIELD CHECK		BY: T. LOFGREEN, PLS	
			MARK	DATE	ITEM	
REVISIONS						

**U.S. Survey Foot**  
OC Public Works  
OC Survey/Field Services  
Boundary Analysis & Mapping







LEGEND

- SYMBOL
- Backflow Preventer Device
  - Control Box Irrigation
  - Control Point
  - Curb Drain/Weep Hole
  - Gate, Double
  - Gate, Single
  - Light Pole, Single
  - Manhole Sewer
  - Meter Water
  - Post
  - Pull Box Electrical
  - Sign Post
  - Tree
  - Utility Pole, Underground
  - Utility Pole w/ 1 Light, Underground
  - Vault Electrical
  - Vault Undefined

- LINE PATTERN KEY
- Block Wall
  - Building Outline
  - Centerline
  - Edge of Concrete
  - Edge of Asphalt Pavement
  - Fence Pipe and Cable
  - Fence Wrought Iron
  - Flowline
  - Grade Line
  - Bike Rack
  - Retaining Wall
  - Right of Way
  - Roof Overhang
  - Striping

- ABBREVIATION
- AC Asphalt Concrete
  - BC Beginning of Curve
  - BM Benchmark
  - CL Centerline
  - CLR Clearance
  - CONC Concrete
  - CP Control Point
  - CMP Corrugated Metal Pipe
  - DWS Detectable Warning Surface
  - DWY Driveway
  - EL Elevation
  - ENC Encroachment
  - EC End of Curve
  - FS Finished Surface
  - FL Flowline
  - FD Found
  - INV Invert
  - PVC Polyvinyl Chloride
  - RAD Radial
  - RCP Reinforced Concrete Pipe
  - TC Top of Curb
  - TW Top of Wall
  - VCP Vitreous Clay Pipe

- AREA PATTERN KEY
- Concrete
  - Dirt
  - Grass

		COUNTY OF ORANGE OC PUBLIC WORKS OC CONSTRUCTION/ SURVEY-FIELD SERVICES					
		SANTA ANA GARDENS CHANNEL PROTECTION BARRIER					
		TOPOGRAPHIC MAP					
		PROJECT LIMITS: FROM CL OF W. MYRTLE ST. TO 1504' NORTH					
		DATE OF SURVEY: 04/15/2025				BY: LOFGREEN AND CREW	
		MAPPING				BY: T. LOFGREEN, PLS	
		OFFICE CHECK				BY: M. KUBISTY, PLS	
		FIELD CHECK				BY: T. LOFGREEN, PLS	
		SCALE: 1" = 5'		W.O. #EF38016		FILE #####-####	
		FILE: SAG_BARRIER_PROTECTION_2025.DWG					
MARK	DATE	ITEM				SHEET NO.  5 of  5	
REVISIONS							