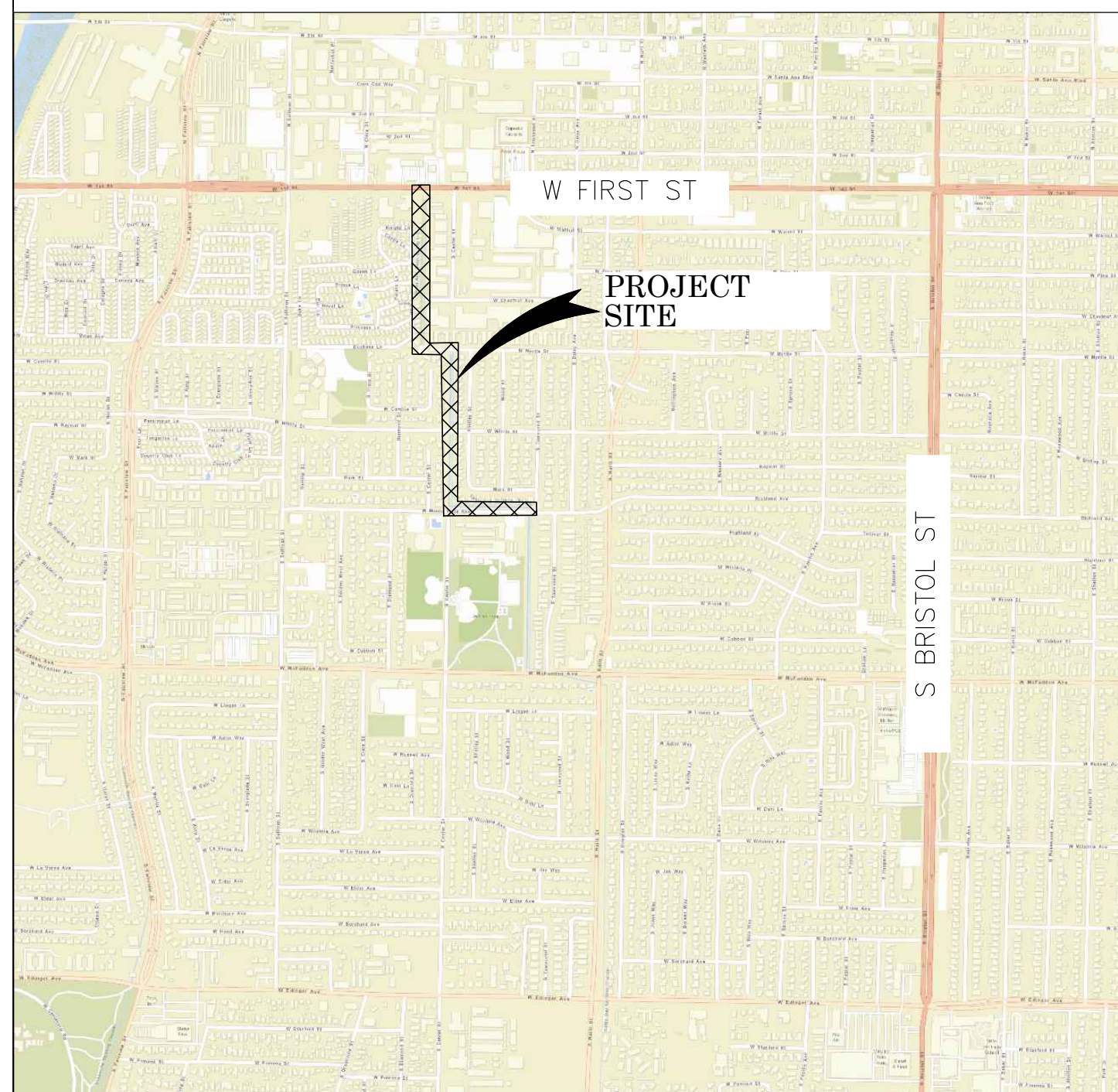




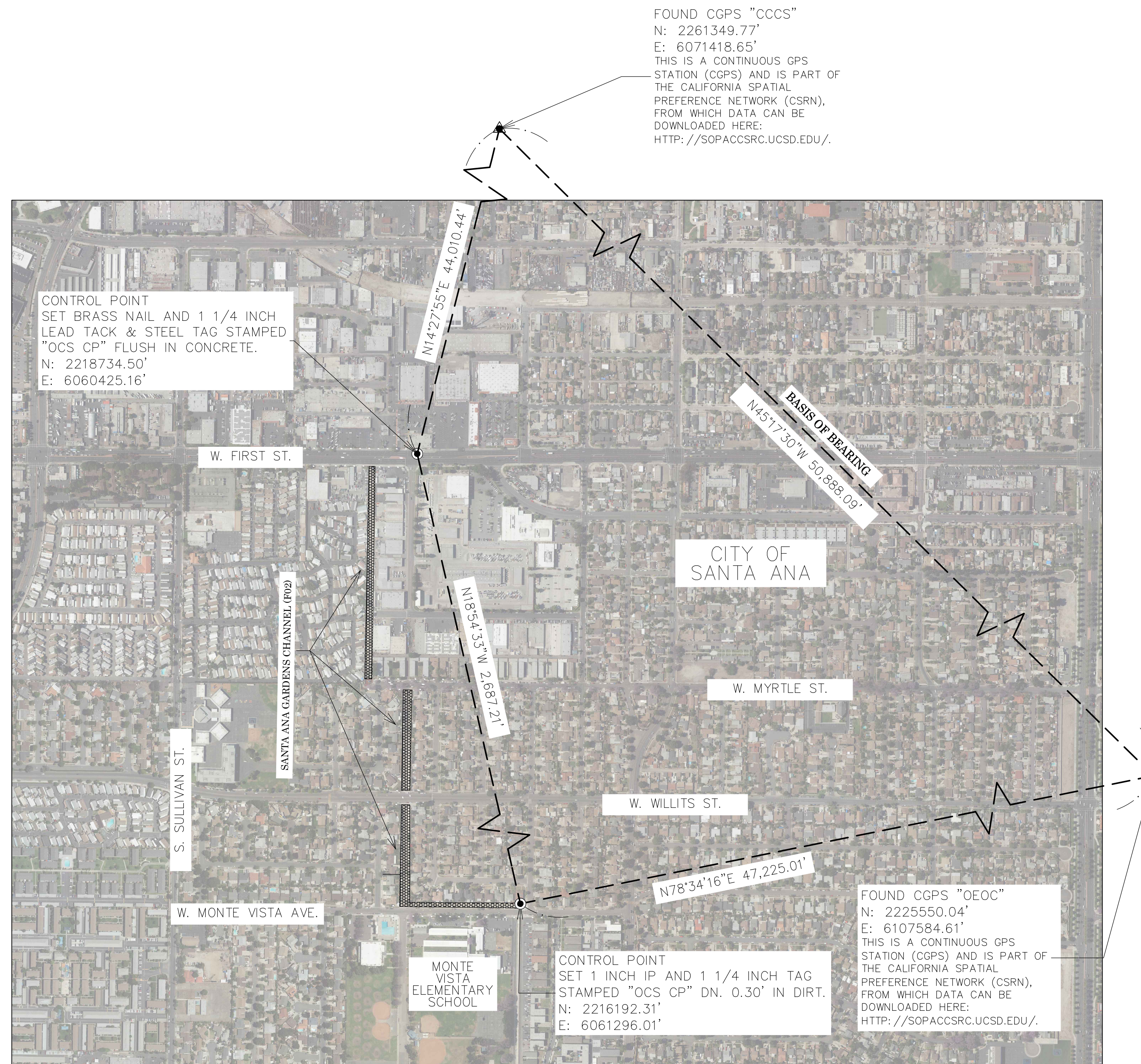
OC PUBLIC WORKS DEPARTMENT  
SHANE SILSBY, DIRECTOR  
KEVIN HILLS, COUNTY SURVEYOR  
SANTA ANA GARDENS CHANNEL (F02)



LOCATION MAP



BIKEWAY EXTENSION (PHASE 2-4)



BASIS OF BEARINGS

THE BASIS OF BEARINGS FOR THIS SURVEY IS BASED ON THE CALIFORNIA COORDINATE SYSTEM (CCS83), ZONE VI, NAD 83, OCS (2007.00) EPOCH ADJUSTMENT, AS DETERMINED LOCALLY BY A LINE BETWEEN CONTINUOUS GLOBAL POSITIONING STATIONS CGPS (CCCS) AND (OECC) BEING NORTH 45°17'30" WEST AS DERIVED FROM THE COORDINATES PUBLISHED BY THE CALIFORNIA SPATIAL REFERENCE CENTER (CSRC) ALONG WITH DATA SHEETS ON FILE IN THE OFFICE OF THE ORANGE COUNTY SURVEYOR.

HORIZONTAL DATUM

COORDINATES SHOWN ARE BASED ON THE CALIFORNIA COORDINATE SYSTEM (CCS83), ZONE VI, NAD 83, OCS 2007.0 EPOCH ADJUSTMENT.

ALL DISTANCES SHOWN ARE GRID, UNLESS OTHERWISE NOTED. TO OBTAIN GROUND DISTANCES MULTIPLY GRID BY 1.000024991.

THE COMBINATION FACTOR SHOWN HEREON WAS DERIVED FROM POINT NUMBER 410  
N: 2217497.99'  
E: 6060436.15'

ALL DISTANCES ARE BASED ON THE U.S. SURVEY FOOT.

VERTICAL DATUM

O.C.S. BM. SA-181-70 ELEV. = 79.199' YEAR LEVELED: 2010

NAVD 1988 (O.C.S. 1995 ADJUSTMENT)

DESCRIPTION: FOUND 3 3/4" OCS ALUMINUM BENCHMARK DISK STAMPED "SA-181-70", SET IN THE SOUTHEAST CORNER OF THE 5.5FT. BY 15.5FT. CONCRETE CATCH BASIN. MONUMENT IS LOCATED IN THE NORTHWEST CORNER OF THE INTERSECTION OF FIRST STREET AND SULLIVAN STREET, 21FT. WESTERLY OF THE CENTERLINE OF SULLIVAN STREET AND 27FT. NORTHERLY OF THE PROLONGATION OF THE NORTH CURB ALONG FIRST STREET. MONUMENT IS SET LEVEL WITH THE SIDEWALK.

NOTES

THE SURVEY INFORMATION SHOWN HEREON IS TO BE USED FOR TOPOGRAPHIC RELATIONSHIPS AND BOUNDARY ONLY AND IS NOT INTENDED FOR LAND ACQUISITION.

PARCELS SHOWN WITHOUT BEARING AND DISTANCES ARE FOR GRAPHICAL PURPOSES.

SHEET INDEX

SHEET	NO.	DESCRIPTION
SHEET 1	1	TITLE SHEET
SHEET 2-4	2-4	BOUNDARY ESTABLISHMENT SHEET
SHEETS 5-11	5-11	TOPOGRAPHIC MAP

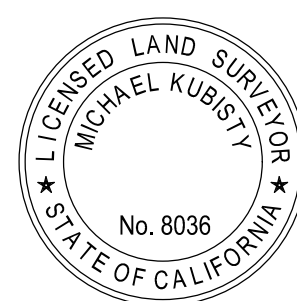
PURPOSE OF SURVEY

THE PURPOSE OF THE SURVEY IS TO PROVIDE A TOPOGRAPHIC MAP AND RIGHT OF WAY ESTABLISHMENT FOR THIS PORTION OF THE SANTA ANA GARDENS CHANNEL (F02).

SENIOR LAND SURVEYOR'S CERTIFICATE:

THIS MAP CORRECTLY REPRESENTS A SURVEY MADE BY ME OR UNDER MY DIRECTION IN CONFORMANCE WITH REQUIREMENTS OF THE PROFESSIONAL LAND SURVEYOR'S ACT; THIS 22 DAY OF JANUARY, 2020.

MICHAEL KUBISTY, PLS. SENIOR LAND SURVEYOR



DEPUTY COUNTY SURVEYOR'S STATEMENT:

THIS MAP HAS BEEN EXAMINED IN ACCORDANCE WITH THE PROFESSIONAL LAND SURVEYOR'S ACT; THIS 22 DAY OF JANUARY, 2020.

WADE WEAVER, PLS. DEPUTY COUNTY SURVEYOR



TOPOGRAPHIC MAPPING PROJECT

			COUNTY OF ORANGE OC PUBLIC WORKS OC SURVEY/FIELD SERVICES/BOUNDARY ANALYSIS & MAPPING			
SANTA ANA GARDENS (F02) BIKEWAY EXTENSION (PHASES 2-4)						
TITLE SHEET						
FROM: FROM W. MONTA VISTA AVE.						
TO: W. FIRST ST.						
			DATE OF SURVEY: DECEMBER, 2019	BY: T. LOFGREEN & PARTY		SHEET NO.  1 of  11
			TOPOGRAPHIC MAPPING	BY: R. BELTRAN		
			OFFICE CHECK	BY: M. KUBISTY, PLS.		
			FIELD CHECK	BY: T. LOFGREEN & PARTY		
MARK	DATE	ITEM	SCALE: N.T.S.		W.O. #EF174135	FILE NO. 1920PW-IN0011
REVISIONS			FILE: SANTA ANA GARDENS_TOPO_2019.DWG			



MONUMENT NOTES

- 11

FOUND 3" BRASS DISK WITH PUNCH IN WELL MONUMENT PER R1, DN 1.0' IN ASPHALT, ACCEPTED AS THE CENTERLINE INTERSECTION OF FIRST STREET AND SULLIVAN STREET.
- 12

FOUND 3" BRASS DISK WITH PUNCH IN WELL MONUMENT PER R3, DN 1.0' IN ASPHALT, N00°47'43"E 0.08' FROM THE CENTERLINE INTERSECTION OF FIRST STREET AND CENTER STREET, ACCEPTED AS POINT ON N'LY PROLONGATION OF THE CENTERLINE OF CENTER STREET.
- 13

FOUND 3" BRASS DISK WITH CHISELED X IN WELL MONUMENT PER R4, DN 1.0' IN ASPHALT, 0.11' N'LY OF LINE ESTABLISHMENT **A**.
- 14

FOUND 3" BRASS DISK WITH PUNCH IN WELL MONUMENT PER R2, DN 1.0' IN ASPHALT, ACCEPTED AS THE CENTERLINE INTERSECTION OF FIRST STREET AND DAISY STREET.
- 15

FOUND SPIKE AND WASHER STAMPED "SANTA ANA SURVEY" PER R5, FLUSH IN ASPHALT, ACCEPTED AS THE CENTERLINE INTERSECTION OF CENTER STEET AND CHESTNUT AVENUE.
- 16

FOUND BROKEN GEAR SPIKE IN LIEU OF 2" IP STAMPED "RE 4484" PER R6, FLUSH IN ASPHALT, ACCEPTED AS THE CENTERLINE INTERSECTION OF MYRTLE STREET AND SHELLEY STREET.
- 17

FOUND GEAR SPIKE AND 1 1/2" WASHER STAMPED "LS 5411" IN LIEU OF 2" IP STAMPED "RE 4484" PER R6, FLUSH IN ASPHALT, 0.07' N'LY OF LINE ESTABLISHMENT **E**.
- 18

FOUND BRASS NAIL W/ TAG STAMPED "LS 5411" IN LIEU OF PK NAIL W/ TAG STAMPED "LS 5411" PER R7, FLUSH IN CONCRETE, ACCEPTED AS THE CENTERLINE INTERSECTION OF MYRTLE STREET AND DAISY AVENUE.
- 19

FOUND 1" IP W/ TAG STAMPED "RCE 9808" PER R9, UP 0.15' IN DIRT, ACCEPTED AS POINT ON LINE ESTABLISHMENT **C**.
- 110

FOUND 1" IP W/ NO TAG PER R9, UP 0.25' IN DIRT, ACCEPTED AS POINT ON LINE ESTABLISHMENT **L**.
- 111

FOUND 1" IP W/ NO TAG PER R9 FLUSH IN DIRT, ACCEPTED AS POINT ON LINE ESTABLISHMENT **L**.
- 112

FOUND 1" IP W/ NO TAG PER R9, UP 0.15' IN DIRT, 0.03' E'LY OF LINE ESTABLISHMENT **L**.
- 113

FOUND 1" IP W/ NO TAG PER R9, UP 0.15' IN DIRT, 0.11' E'LY OF LINE ESTABLISHMENT **L**.
- 114

FOUND GEAR SPIKE W/ TAG STAMPED "LS 5411" PER R12, FLUSH IN ASPHALT, ACCEPTED AS THE CENTERLINE INTERSECTION OF SHELLEY STREET AND WILLITS STREET.
- 115

FOUND GEAR SPIKE AND 1 1/2" WASHER STAMPED "LS 5411" PER R13, FLUSH IN ASPHALT, ACCEPTED AS THE CENTERLINE INTERSECTION OF NORTH DIAMOND STREET AND WILLITS STREET.
- 116

FOUND GEAR SPIKE AND 1 1/2" WASHER STAMPED "LS 5411" PER R13, FLUSH IN ASPHALT, ACCEPTED AS THE CENTERLINE INTERSECTION OF SOUTH DIAMOND STREET AND WILLITS STREET.
- 117

FOUND GEAR SPIKE AND WASHER STAMPED "LS 5411" PER R14, FLUSH IN ASPHALT, ACCEPTED AS THE CENTERLINE INTERSECTION OF MONTE VISTA AVENUE AND CENTER STREET.
- 118

FOUND GEAR SPIKE AND WASHER STAMPED "LS 5411" PER R15, FLUSH IN ASPHALT, ACCEPTED AS THE CENTERLINE INTERSECTION OF MONTE VISTA AVENUE AND TOWNSEND STREET.
- 119

FOUND CHISELED X, NO REFERENCE, IN CONCRETE SIDEWALK N50°12'16"E 0.11' FROM EC OF THE S'LY RIGHT OF WAY KNUCKLE OF MYRTLE STREET.
- 120

FOUND CHISELED X NO REFERENCE, 0.08' N'LY OF S'LY RIGHT OF WAY OF MYRTLE STREET IN CONCRETE SIDEWALK.
- 121

FOUND 2" IP W/ TAG STAMPED "RE 4484" PER R6, DN. 1.0' IN DIRT, N47°08'45"W 0.13' FROM ESTABLISHMENT NOTE **AC**.
- 122

FOUND 1" IP PER R16, DN. 1.7', E'LY 0.08' FROM LINE ESTABLISHMENT **AC**.
- 123

FOUND 1" IP W/ TAG STAMPED "RE 4484" PER R6, UP 0.3' IN DIRT, LEANING W'LY 0.28' FROM LINE ESTABLISHMENT **AC**.
- 124

FOUND 1" IP W/ TAG STAMPED "RE 4484" PER R6 UP 0.3' IN DIRT, LEANING W'LY 0.11' FROM LINE ESTABLISHMENT **AN**.
- 125

FOUND 1" IP W/ TAG STAMPED "RE 4484" PER R6, UP 0.15' IN DIRT, LEANING W'LY 0.24' FROM LINE ESTABLISHMENT **AC**.
- 126

FOUND 1" IP PER R6, DN 2.0' IN DIRT, W'LY 0.11' FROM LINE ESTABLISHMENT **AE**.
- 127

FOUND 1 1/2" IP PER R6, UP 0.05' IN DIRT, ACCEPTED AS POINT ON LINE ESTABLISHMENT **AN**.
- 128

FOUND 2" IP W/ TAG STAMPED "RE 4484" PER R6, DN 1.0' IN DIRT, ACCEPTED AS POINT ON LINE ESTABLISHMENT **AN**.
- 129

FOUND 1" IP W/ TAG STAMPED "RE 4484" PER R6, UP 0.1' IN DIRT, W'LY 0.12' FROM LINE ESTABLISHMENT **AN**.
- 130

FOUND 1" IP PER R6, UP 0.1' IN DIRT, W'LY 0.05' FROM LINE ESTABLISHMENT **AN**.
- 131

FOUND 1" IP PER R6, FLUSH IN DIRT, W'LY 0.18' FROM LINE ESTABLISHMENT **AN**.
- 132

FOUND DISTURBED 2" HOLLOW IP PER R6, DN. 0.1' IN DIRT, N82°33'34"E 0.73' FROM POINT ESTABLISHMENT **AC**.
- 133

FOUND DISTURBED 1 1/2" HOLLOW IP PER R16, DN. 0.2' IN DIRT, N89°19'08"W 0.11' FROM ESTABLISHMENT NOTE **AN**.
- 134

FOUND DISTURBED 1" HOLLOW IP PER R6, DN. 0.25' IN DIRT, S'LY 0.16' FROM LINE ESTABLISHMENT **AC**.
- 135

FOUND 1" IP WITH BRASS NAIL PER R6 DN. 0.3' IN DIRT, S'LY 0.25' FROM LINE ESTABLISHMENT **AC**.
- 136

FOUND 2" IP WITH TAG STAMPED "RE 4484" PER R17 DN. 0.15' IN DIRT, ACCEPTED AS EC OF N'LY RIGHT OF WAY OF MONTE VISTA AVENUE.
- 137

FOUND 2" IP WITH TAG STAMPED "RE 4484" PER R17, DN. 0.35' IN DIRT, BC OF THE W'LY RIGHT OF WAY OF TOWNSEND STREET.
- 138

FOUND GEAR SPIKE AND WASHER STAMPED "LS 5411" PER R19, FLUSH IN ASPHALT, ACCEPTED AS THE CENTERLINE INTERSECTION OF WILLITS STREET AND WOOD STREET.
- 139

FOUND GEAR SPIKE AND WASHER STAMPED "LS 5411" PER R20, FLUSH IN ASPHALT, N89°20'13"W 0.13' FROM THE CENTERLINE INTERSECTION OF MARK STREET AND SHELLEY STREET.

ESTABLISHMENT NOTES

- A**

ESTABLISHED THE CENTERLINE OF FIRST STREET BY HOLDING A LINE BETWEEN MONUMENT NOTES **11** AND **14**.
- B**

ESTABLISHED BY INTERSECTION HOLDING A LINE E'LY FROM MONUMENT NOTE **11** ALONG LINE ESTABLISHMENT **A**, AND A LINE N'LY FROM MONUMENT NOTES **15**, BETWEEN MONUMENT NOTES **12** AND **15**.
- C**

ESTABLISHED THE CENTERLINE OF CENTER STREET HOLDING A LINE BETWEEN MONUMENT NOTE **15** AND ESTABLISHMENT NOTE **C**.
- E**

ESTABLISHED THE CENTERLINE OF DAISY STREET HOLDING A LINE BETWEEN MONUMENTS **14** AND **18**.
- F**

ESTABLISHED THE N'LY RIGHT OF WAY OF FIRST STREET 52.00' N'LY OF, PERPENDICULAR TO, AND PARALLEL WITH LINE ESTABLISHMENT **A** PER R11.
- G**

ESTABLISHED THE S'LY RIGHT OF WAY OF FIRST STREET 50.00' S'LY OF, PERPENDICULAR TO, AND PARALLEL WITH LINE ESTABLISHMENT **A** PER R10.
- H**

ESTABLISHED THE S'LY RIGHT OF WAY OF FIRST STREET 55.00' S'LY OF, PERPENDICULAR TO, AND PARALLEL WITH LINE ESTABLISHMENT **A** PER R9.
- I**

ESTABLISHED THE N'LY RIGHT OF WAY OF MYRTLE STREET 30.00' N'LY OF, PERPENDICULAR TO, AND PARALLEL WITH LINE ESTABLISHMENT **E** PER R9.
- J**

ESTABLISHED W'LY LINE OF PARCEL 703 OF R18 255.00', W'LY OF, PERPENDICULAR TO, AND PARALLEL WITH LINE ESTABLISHMENT **C** PER R8, AND HOLDING A LINE BETWEEN ESTABLISHMENT NOTES **U** AND **V**.
- K**

ESTABLISHED E'LY LINE OF PARCEL 703 OF R18 AND W'LY LINE OF PARCEL 704 OF R18 245.00' W'LY OF, PERPENDICULAR TO, AND PARALLEL WITH LINE ESTABLISHMENT **C** PER R8 AND R9, AND HOLDING A LINE BETWEEN ESTABLISHMENT NOTES **C** AND **C**.
- L**

ESTABLISHED E'LY LINE OF PARCEL 704 OF R18 215.00' W'LY OF, PERPENDICULAR TO, AND PARALLEL WITH LINE ESTABLISHMENT **C** PER R9, AND HOLDING A LINE BETWEEN ESTABLISHMENT NOTES **C** AND **R**.
- M**

S.F.N. ESTABLISHED BY INTERSECTION HOLDING A LINE 255.00' W'LY OF, PERPENDICULAR TO, AND PARALLEL WITH LINE ESTABLISHMENT **C** AND LINE ESTABLISHMENT **C** PER R8.
- N**

S.F.N. ESTABLISHED BY INTERSECTION HOLDING A LINE 255.00' W'LY OF, PERPENDICULAR TO, AND PARALLEL WITH THE S'LY PROLONGATION OF LINE ESTABLISHMENT **C** FROM MONUMENT NOTE **15** AND THE W'LY PROLONGATION OF LINE ESTABLISHMENT **E** FROM MONUMENT **16** PER R9.
- O**

S.F.N. ESTABLISHED BY INTERSECTION HOLDING A LINE 245.00' W'LY OF, PERPENDICULAR TO, AND PARALLEL WITH LINE ESTABLISHMENT **C** AND LINE ESTABLISHMENT **C** PER R8 AND R9.
- P**

S.F.N. ESTABLISHED BY INTERSECTION HOLDING A LINE 245.00' W'LY OF, PERPENDICULAR TO, AND PARALLEL WITH THE S'LY PROLONGATION OF LINE ESTABLISHMENT **C** FROM MONUMENT NOTE **15** AND THE W'LY PROLONGATION OF LINE ESTABLISHMENT **E** FROM MONUMENT **16** PER R9.
- Q**

S.F.N. ESTABLISHED BY INTERSECTION HOLDING A LINE 215.00' W'LY OF, PERPENDICULAR TO, AND PARALLEL WITH LINE ESTABLISHMENT **C** AND LINE ESTABLISHMENT **C** PER R8 AND R9.
- R**

S.F.N. ESTABLISHED BY INTERSECTION HOLDING A LINE 215.00' W'LY OF, PERPENDICULAR TO, AND PARALLEL WITH THE S'LY PROLONGATION OF LINE ESTABLISHMENT **C** FROM MONUMENT NOTE **15** AND THE W'LY PROLONGATION OF LINE ESTABLISHMENT **E** FROM MONUMENT **16** PER R9.
- S**

ESTABLISHED THE CENTERLINE OF SHELLEY STREET HOLDING A LINE BETWEEN MONUMENTS **16** AND **14**.
- T**

ESTABLISHED THE CENTERLINE OF WILLITS STREET HOLDING A LINE BETWEEN MONUMENTS **14** AND **16**.
- U**

ESTABLISHED THE CENTERLINE OF MONTE VISTA AVENUE HOLDING A LINE BETWEEN MONUMENTS **17** AND **18**.
- V**

ESTABLISHED THE S'LY RIGHT OF WAY OF MYRTLE STREET 30.00' S'LY OF, PERPENDICULAR TO, AND PARALLEL WITH LINE ESTABLISHMENT **E** PER R16.
- W**

ESTABLISHED THE S'LY RIGHT OF WAY KNUCKLE OF MYRTLE STREET HOLDING RECORD DATA PER R16 COMMENCING AT ESTABLISHMENT NOTE **C** AND TERMINATING AT LINE ESTABLISHMENT **V**.
- X**

ESTABLISHED EC S'LY RIGHT OF WAY OF MYRTLE STREET HOLDING RECORD DISTANCE PER R16 W'LY FROM ESTABLISHMENT NOTE **AC** ALONG LINE ESTABLISHMENT **V**.
- Y**

ESTABLISHED THE N'LY RIGHT OF WAY OF WILLITS STREET 40.00' N'LY OF, PERPENDICULAR TO, AND PARALLEL WITH LINE ESTABLISHMENT **I** PER R16.
- Z**

ESTABLISHED THE S'LY RIGHT OF WAY OF WILLITS STREET 40.00' S'LY OF, PERPENDICULAR TO, AND PARALLEL WITH LINE ESTABLISHMENT **I** PER R16.
- AA**

ESTABLISHED THE N'LY RIGHT OF WAY OF WILLITS STREET 42.00' N'LY OF, PERPENDICULAR TO, AND PARALLEL WITH LINE ESTABLISHMENT **I** PER R6.
- AB**

ESTABLISHED THE S'LY RIGHT OF WAY OF WILLITS STREET 42.00' S'LY OF, PERPENDICULAR TO, AND PARALLEL WITH LINE ESTABLISHMENT **I** PER R6.
- AC**

ESTABLISHED THE N'LY RIGHT OF WAY OF MONTE VISTA AVENUE 30.00' N'LY OF, PERPENDICULAR TO, AND PARALLEL WITH LINE ESTABLISHMENT **U** PER R6 AND R17.
- AD**

ESTABLISHED THE S'LY RIGHT OF WAY OF MONTE VISTA AVENUE 30.00' S'LY OF, PERPENDICULAR TO, AND PARALLEL WITH LINE ESTABLISHMENT **U** PER R6 AND R17.
- AE**

ESTABLISHED THE W'LY LINE OF LOT A OF PARCEL 702 OF R18 195.28' W'LY OF, PERPENDICULAR TO, AND PARALLEL WITH LINE ESTABLISHMENT **S** PER R16, AND HOLDING A LINE BETWEEN ESTABLISHMENT NOTES **AF** AND **AC**.
- AF**

S.F.N. ESTABLISHED BY INTERSECTION HOLDING A LINE 195.28' W'LY OF, PERPENDICULAR TO, AND PARALLEL WITH LINE ESTABLISHMENT **S** AND LINE ESTABLISHMENT **V** PER R6 AND R16.
- AG**

S.F.N. ESTABLISHED BY INTERSECTION HOLDING A LINE 195.28' W'LY OF, PERPENDICULAR TO, AND PARALLEL WITH LINE ESTABLISHMENT **S** AND LINE ESTABLISHMENT **I** PER R6 AND R16.
- AH**

ESTABLISHED THE W'LY LINE OF LOT B OF PARCEL 702 OF R18 195.28' W'LY OF, PERPENDICULAR TO, AND PARALLEL WITH LINE ESTABLISHMENT **S** PER R16, AND HOLDING A LINE BETWEEN ESTABLISHMENT NOTES **A** AND **AA**.
- AI**

S.F.N. ESTABLISHED BY INTERSECTION HOLDING A LINE 195.28' W'LY OF, PERPENDICULAR TO, AND PARALLEL WITH THE S'LY PROLONGATION OF LINE ESTABLISHMENT **C** FROM MONUMENT NOTE **14** AND LINE ESTABLISHMENT **I** PER R16.
- AJ**

S.F.N. ESTABLISHED BY INTERSECTION HOLDING A LINE 195.28' W'LY OF, PERPENDICULAR TO, AND PARALLEL WITH THE S'LY PROLONGATION OF LINE ESTABLISHMENT **C** FROM MONUMENT NOTE **14** AND LINE ESTABLISHMENT **AC** PER R16.
- AK**

ESTABLISHED THE W'LY LINE OF OF PARCEL 701 OF R18 187.28' W'LY OF, PERPENDICULAR TO, AND PARALLEL WITH LINE ESTABLISHMENT **C** PER R6, AND HOLDING A LINE BETWEEN ESTABLISHMENT NOTES **AL** AND **AV**.
- AL**

S.F.N. ESTABLISHED BY INTERSECTION HOLDING A LINE 187.28' W'LY OF, PERPENDICULAR TO, AND PARALLEL WITH LINE ESTABLISHMENT **S** AND LINE ESTABLISHMENT **V** PER R6.
- AM**

S.F.N. ESTABLISHED BY INTERSECTION HOLDING A LINE 187.28' W'LY OF, PERPENDICULAR TO, AND PARALLEL WITH THE S'LY PROLONGATION OF LINE ESTABLISHMENT **S** FROM MONUMENT NOTE **14** AND LINE ESTABLISHMENT **AC**.
- AN**

ESTABLISHED THE E'LY LINE OF OF PARCEL 701 OF R18 145.28' W'LY OF, PERPENDICULAR TO, AND PARALLEL WITH LINE ESTABLISHMENT **S** PER R6, AND HOLDING A LINE BETWEEN ESTABLISHMENT NOTES **AC** AND **AF**.
- AO**

S.F.N. ESTABLISHED BY INTERSECTION HOLDING A LINE 145.28' W'LY OF, PERPENDICULAR TO, AND PARALLEL WITH LINE ESTABLISHMENT **S** AND LINE ESTABLISHMENT **V** PER R6.
- AP**

S.F.N. ESTABLISHED BY INTERSECTION HOLDING A LINE 145.28' W'LY OF, PERPENDICULAR TO, AND PARALLEL WITH THE S'LY PROLONGATION OF LINE ESTABLISHMENT **C** FROM MONUMENT NOTE **14** AND A LINE 50.00' N'LY OF AND PARALLEL WITH LINE ESTABLISHMENT **U** PER R6.
- AO**

ESTABLISHED THE N'LY LINE OF PARCEL 701 OF R18 50.00' N'LY OF, PERPENDICULAR TO, AND PARALLEL WITH LINE ESTABLISHMENT **U** PER R6, AND HOLDING A LINE BETWEEN ESTABLISHMENT NOTES **AR** AND **AS**.
- AR**

ESTABLISHED SE'LY CURVE OF PARCEL 701 OF R18 HOLDING A CURVE BETWEEN MONUMENTS **16**, **17**, AND RECORD RADIUS PER R17.
- AS**

S.F.N. ESTABLISHED BY INTERSECTION HOLDING A LINE 50.00' N'LY OF, PERPENDICULAR TO, AND PARALLEL WITH LINE ESTABLISHMENT **S** AND A LINE TANGENT TO **AR** PER R17.
- AT**

ESTABLISHED E'LY LINE OF PARCEL 701 OF R18 HOLDING RECORD CURVATURE INFORMATION BETWEEN MONUMENT **17** AND ESTABLISHMENT NOTE **AS**.
- AL**

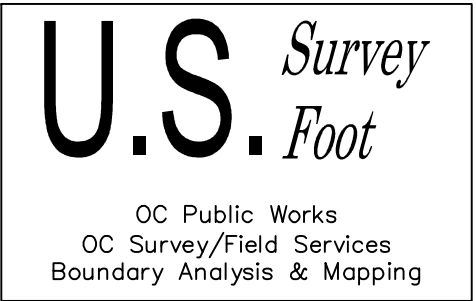
S.F.N. ESTABLISHED CENTERLINE INTERSECTION OF MARK STREET AND TOWNSEND STREET BY TIES PER R21.
- AV**

ESTABLISHED BY INTERSECTION HOLDING A LINE S'LY FROM MONUMENT NOTE **14** ALONG THE S'LY PROLONGATION OF LINE ESTABLISHMENT **S** AND A LINE W'LY FROM MONUMENT NOTE **19** AND ALONG THE W'LY PROLONGATION OF LINE ESTABLISHMENT **AM**.
- AW**

ESTABLISHED CENTERLINE OF MARK STREET HOLDING A LINE BETWEEN ESTABLISHMENT NOTES **AO** AND **AV**.

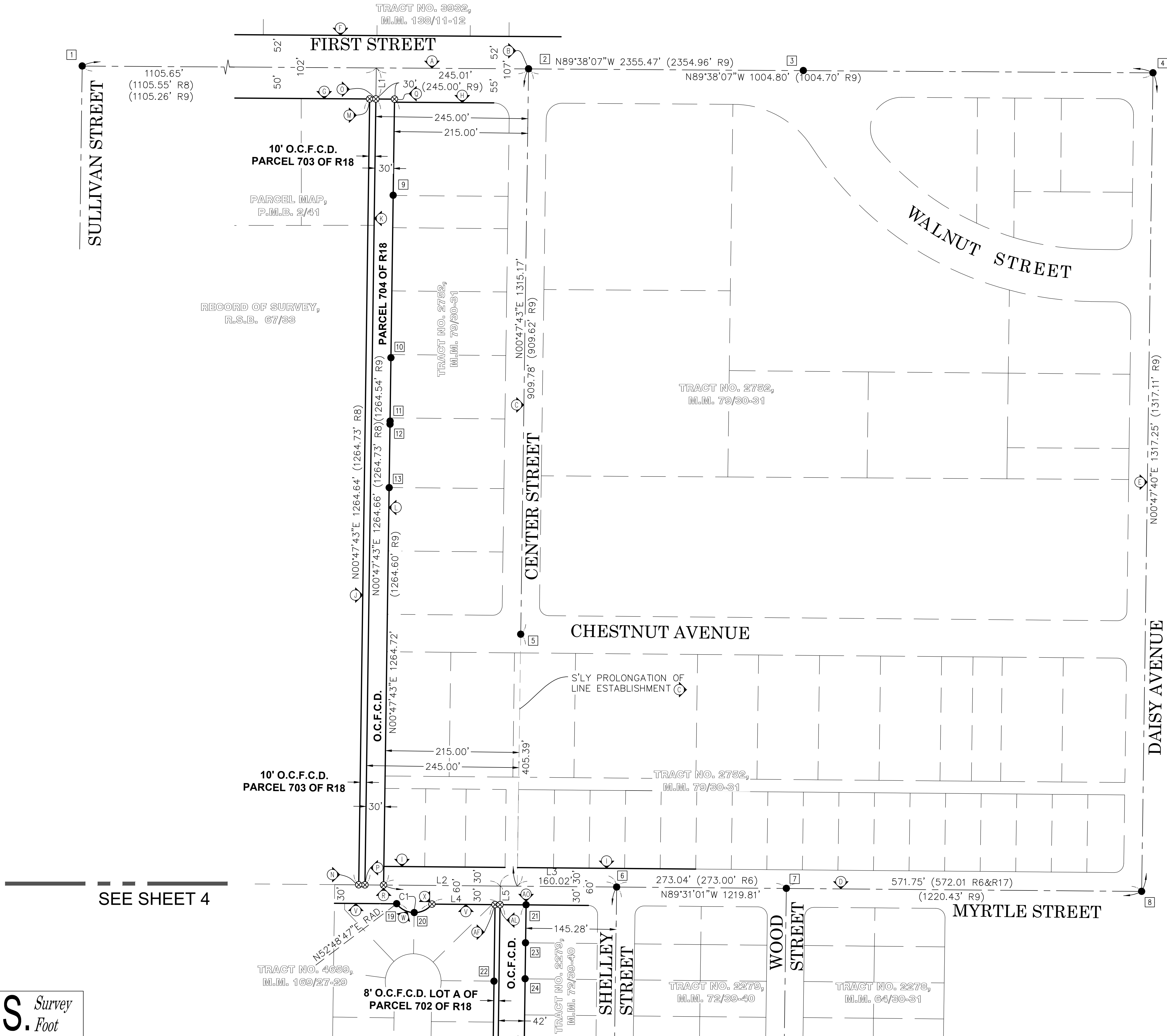
REFERENCES

- (R1) = CORNER RECORD, C.R. 2008–1100
- (R2) = CORNER RECORD, C.R. 2008–2663
- (R3) = CORNER RECORD, C.R. 2008–1104
- (R4) = CORNER RECORD, C.R. 2008–2665
- (R5) = CORNER RECORD, C.R. 2007–1945
- (R6) = TRACT NO. 2279, M.M. 72/39–40
- (R7) = CORNER RECORD, C.R. 2011–3417
- (R8) = RECORD OF SURVEY, R.S.B. 67/33
- (R9) = TRACT NO. 2752, M.M. 79/30–31
- (R10) = PARCEL MAP, P.M.B. 2/41
- (R11) = TRACT NO. 3932, M.M. 138/11–12
- (R12) = CORNER RECORD, C.R. 2011–1323
- (R13) = CORNER RECORD, C.R. 2011–1328
- (R14) = CORNER RECORD, C.R. 2011–1312
- (R15) = CORNER RECORD, C.R. 2011–1315
- (R16) = TRACT NO. 4659, M.M. 169/27–29
- (R17) = TRACT NO. 2278, M.M. 64/30–31
- (R18) = O.C.F.C.D., O.R. 11167–340
- (R19) = CORNER RECORD, C.R. 2011–1324
- (R20) = CORNER RECORD, C.R. 2011–1327
- (R21) = CORNER RECORD, C.R. 2011–1326



				COUNTY OF ORANGE OC PUBLIC WORKS OC SURVEY/FIELD SERVICES/BOUNDARY ANALYSIS & MAPPING	
				SANTA ANA GARDENS (F02) BIKEWAY EXTENSION (PHASES 2-4)	
				BOUNDARY MAP	
				FROM: MONTA VISTA AVENUE	
				TO: FIRST STREET	
				DATE OF SURVEY: DECEMBER 2019	BY: T. LOFGREEN & PARTY
		BOUNDARY MAPPING		BY: A. VU	
		OFFICE CHECK		BY: M. KUBISTY, PLS	
		FIELD CHECK		BY: T. LOFGREEN & PARTY	
MARK	DATE	ITEM		SCALE: AS NOTED   W.O. # EF17413S   FILE NO. 1920PW-IN0011	
REVISIONS				FILE: SANTA ANA GARDENS_SEARCH_MAP_2019.DWG	

SHEET NO. 2 of 11



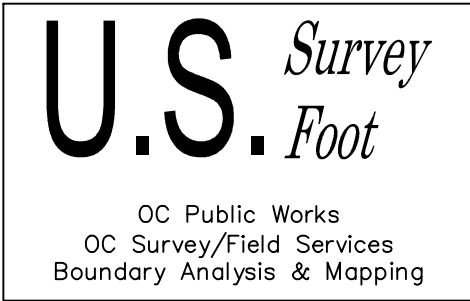
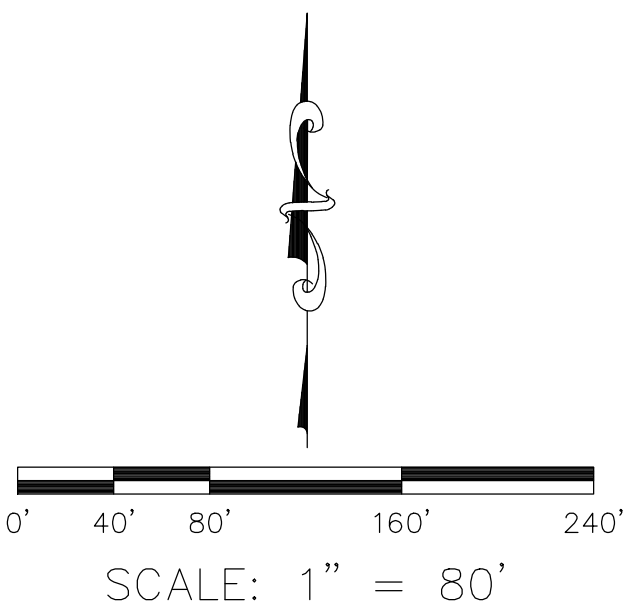
**NOTES**  
LOT LINES NOT SHOWN IN BOLD AND NOT DIMENSIONED ARE FOR GRAPHICAL PRESENTATION ONLY.

- LEGEND**  
● FOUND MONUMENT AS NOTED  
⊗ SEARCHED FOUND NOTHING

- REFERENCES**  
(R1) = CORNER RECORD, C.R. 2008-1100  
(R2) = CORNER RECORD, C.R. 2008-2663  
(R3) = CORNER RECORD, C.R. 2008-1104  
(R4) = CORNER RECORD, C.R. 2008-2665  
(R5) = CORNER RECORD, C.R. 2007-1945  
(R6) = TRACT NO. 2279, M.M. 72/39-40  
(R7) = CORNER RECORD, C.R. 2011-3417  
(R8) = RECORD OF SURVEY, R.S.B. 67/33  
(R9) = TRACT NO. 2752, M.M. 79/30-31  
(R10) = PARCEL MAP, P.M.B. 2/41  
(R11) = TRACT NO. 3932, M.M. 138/11-12  
(R12) = CORNER RECORD, C.R. 2011-1323  
(R13) = CORNER RECORD, C.R. 2011-1328  
(R14) = CORNER RECORD, C.R. 2011-1312  
(R15) = CORNER RECORD, C.R. 2011-1315  
(R16) = TRACT NO. 4659, M.M. 169/27-29  
(R17) = TRACT NO. 2278, M.M. 64/30-31  
(R18) = O.C.F.C.D., O.R. 11167-340  
(R19) = CORNER RECORD, C.R. 2011-1324  
(R20) = CORNER RECORD, C.R. 2011-1327  
(R21) = CORNER RECORD, C.R. 2011-1326

LINE TABLE			
LINE #	BEARING	LENGTH	RECORD
L1	N00°47'43"E	50.00'	—
L2	N89°31'01"W	187.74'	188.10' (R9)
L3	N89°31'01"W	187.28'	187.28' (R6)
L4	N89°31'01"W	109.34'	109.34' (R16)
L5	N00°46'14"E	30.00'	—

CURVE TABLE			
CURVE #	DELTA	RADIUS	LENGTH
C1	104°39'37" 104°39'36"(R16)	36.00' 36.00'(R16)	65.76' 65.76'(R16)



SEE SHEET 4

			COUNTY OF ORANGE OC PUBLIC WORKS OC SURVEY/FIELD SERVICES/BOUNDARY ANALYSIS & MAPPING			
			SANTA ANA GARDENS (F02) BIKEWAY EXTENSION (PHASES 2-4)			
			BOUNDARY MAP			
			FROM:MONTA VISTA AVENUE			
			TO: FIRST STREET			
		DATE OF SURVEY: DECEMBER 2019	BY: T. LOFGREEN & PARTY		SHEET NO.  3 of 11	
		BOUNDARY MAPPING	BY: A. VU			
		OFFICE CHECK	BY: M. KUBISTY, PLS			
		FIELD CHECK	BY: T. LOFGREEN & PARTY			
		SCALE: AS NOTED   W.O. # EF174135   FILE NO. 1920PW-IN0011 FILE: SANTA ANA GARDENS_SEARCH MAP_2019.DWG				
MARK	DATE	ITEM				
REVISIONS						

SEE SHEET 3

RECORD OF SURVEY,  
R.S.B. 67/33

TRACT NO. 2752,  
M.M. 79/30-31

TRACT NO. 4659,  
M.M. 169/27-29

TRACT NO. 2279,  
M.M. 72/39-40

TRACT NO. 2279,  
M.M. 72/39-40

TRACT NO. 2278,  
M.M. 64/30-31

TRACT NO. 4659,  
M.M. 169/27-29

TRACT NO. 2279,  
M.M. 72/39-40

TRACT NO. 2279,  
M.M. 72/39-40

TRACT NO. 2278,  
M.M. 64/30-31

RECORD OF SURVEY,  
R.S.B. 27/44

#### NOTES

R/W SHOWN HEREON IN BOLD ESTABLISHED BY SURVEY.  
THE LOT LINES ARE FOR GRAPHICAL PRESENTATION ONLY.

#### LEGEND

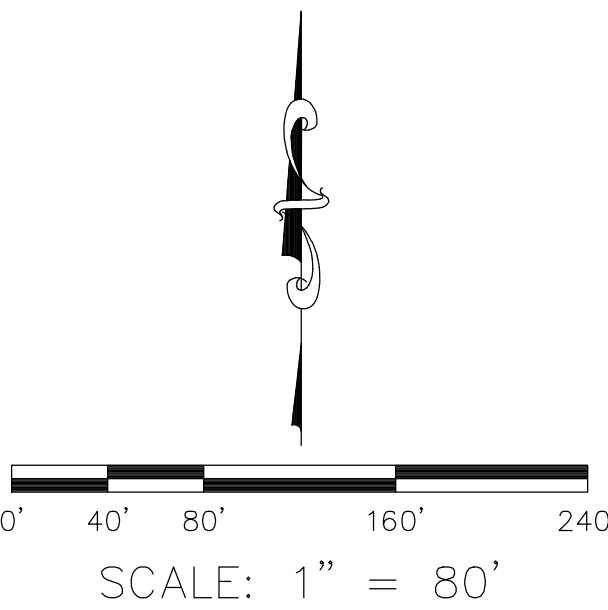
- FOUND MONUMENT AS NOTED
- SEARCHED FOUND NOTHING

#### REFERENCES

- (R1) = CORNER RECORD, C.R. 2008-1100
- (R2) = CORNER RECORD, C.R. 2008-2663
- (R3) = CORNER RECORD, C.R. 2008-1104
- (R4) = CORNER RECORD, C.R. 2008-2665
- (R5) = CORNER RECORD, C.R. 2007-1945
- (R6) = TRACT NO. 2279, M.M. 72/39-40
- (R7) = CORNER RECORD, C.R. 2011-3417
- (R8) = RECORD OF SURVEY, R.S.B. 67/33
- (R9) = TRACT NO. 2752, M.M. 79/30-31
- (R10) = PARCEL MAP, P.M.B. 2/41
- (R11) = TRACT NO. 3932, M.M. 138/11-12
- (R12) = CORNER RECORD, C.R. 2011-1323
- (R13) = CORNER RECORD, C.R. 2011-1328
- (R14) = CORNER RECORD, C.R. 2011-1312
- (R15) = CORNER RECORD, C.R. 2011-1315
- (R16) = TRACT NO. 4659, M.M. 169/27-29
- (R17) = TRACT NO. 2278, M.M. 64/30-31
- (R18) = O.C.F.C.D., O.R. 11167-340
- (R19) = CORNER RECORD, C.R. 2011-1324
- (R20) = CORNER RECORD, C.R. 2011-1327
- (R21) = CORNER RECORD, C.R. 2011-1326

LINE TABLE			
LINE #	BEARING	LENGTH	RECORD
L2	N89°31'01"W	187.74'	188.10' (R9)
L3	N89°31'01"W	187.28'	187.28' (R6)
L4	N89°31'01"W	109.34'	109.34' (R16)
L5	N00°43'14"E	30.00'	-
L6	N00°56'12"E	5.07'	5.02' (R17)
L7	N89°20'07"W	138.80'	138.81' (R16)
L8	N89°26'01"W	187.28'	187.28' (R6)
L9	N89°26'01"W	6.50'	6.54' (R13) 6.53' (R16)
L10	N89°20'07"W	701.21'	701.30' (R6&R17)
L11	N00°46'14"E	30.00'	-

CURVE TABLE			
CURVE #	DELTA	RADIUS	LENGTH
C1	104°39'36"	36.00'	65.76'
	104°39'36"(R16)	36.00'(R16)	65.76'(R16)
C2	89°15'43"	15.00'	5.07'
	89°54'18"(R17)	15.00'(R17)	5.02'(R17)



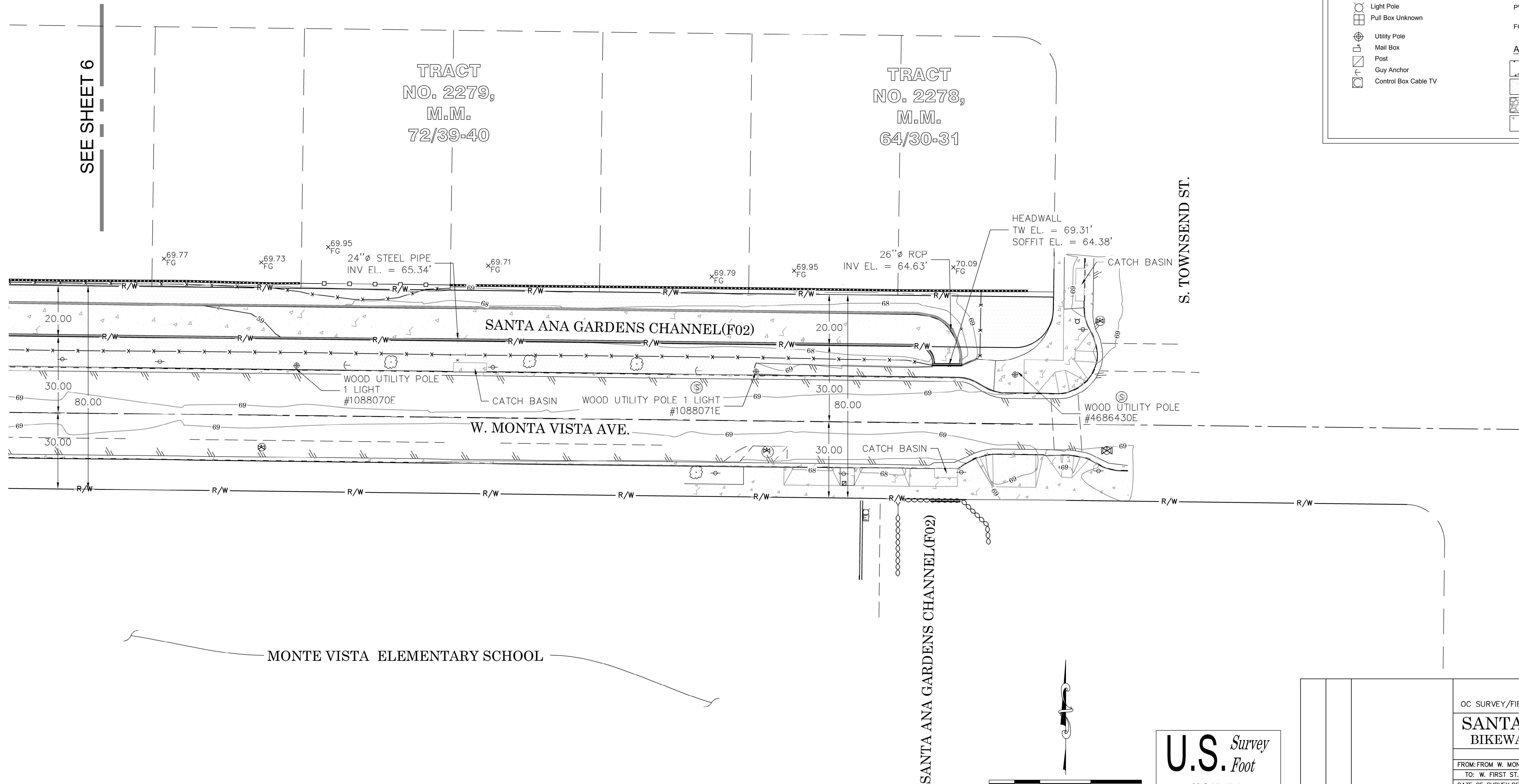
			COUNTY OF ORANGE OC PUBLIC WORKS OC SURVEY/FIELD SERVICES/BOUNDARY ANALYSIS & MAPPING	
			<b>SANTA ANA GARDENS (F02)</b> <b>BIKEWAY EXTENSION (PHASES 2-4)</b>	
			BOUNDARY MAP	
			FROM: MONTA VISTA AVENUE	
			TO: FIRST STREET	
			DATE OF SURVEY: DECEMBER 2019	BY: T. LOFGREEN & PARTY
			BOUNDARY MAPPING	BY: A. VU
			OFFICE CHECK	BY: M. KUBISTY, PLS
			FIELD CHECK	BY: T. LOFGREEN & PARTY
			SCALE: AS NOTED   W.O. # EF174135	FILE NO. 1920PW-IN0011
			FILE: SANTA ANA GARDENS_SEARCH MAP_2019.DWG	
MARK	DATE	ITEM		
REVISIONS				



SEE SHEET 6

TRACT  
NO. 2279,  
M.M.  
72/39-40

TRACT  
NO. 2278,  
M.M.  
64/30-31

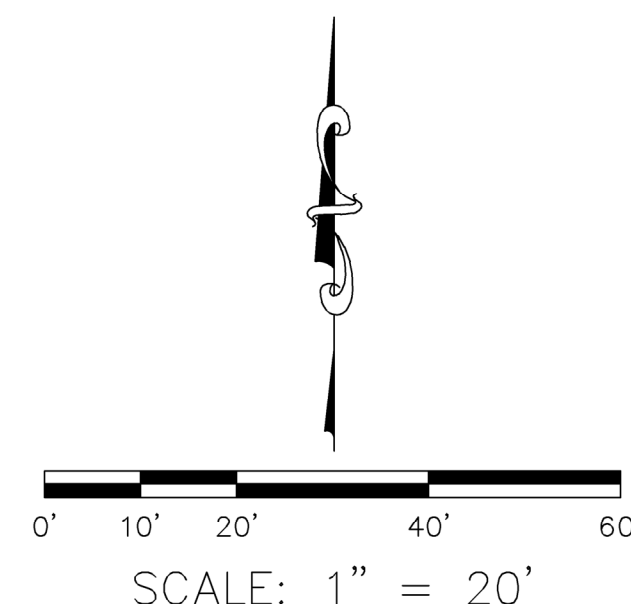


MONTE VISTA ELEMENTARY SCHOOL

SANTA ANA GARDENS CHANNEL (F02)

S. TOWNSEND ST.

S. TOWNSEND ST.



**U.S. Survey**  
*Foot*  
OC Public Works  
OC Survey/Field Services  
Boundary Analysis & Mapping

**SYMBOL PATTERN KEY**

- Pipe Inlet / Pipe Outlet
- Fire Hydrant
- Vault - Electrical
- Steel Sign
- Water Meter
- Sewer Manhole
- Single Light Pole
- Water Valve
- Pull box - Electrical
- Fire Hydrant
- Tree
- Storm Drain Manhole
- Vault Undefined
- Traffic Pull Box
- Gas Valve
- Double Gate
- Water Valve
- Tree
- Light Pole
- Pull Box Unknown
- Utility Pole
- Mail Box
- Post
- Guy Anchor
- Control Box Cable TV

**LEGEND**

**LINE PATTERN KEY**

- Edge of Asphalt Pavement
- Edge of Concrete Pavement
- Flowline
- Street Striping
- Concrete Wall
- Wood Fence
- Hand Rail Steel
- Building
- Chain Link Fence
- Wrought Iron Fence
- Hinge Point
- Grade Line
- Block Wall
- Center line
- Right of Way Line

**ABBREVIATIONS**

RCP - Reinforced Concrete Pipe

PVC - Polyvinyl Chloride Pipe

FG - Finished Grade

**AREA PATTERN KEY**

- Concrete
- Dirt
- Gravel
- Grass

				COUNTY OF ORANGE OC PUBLIC WORKS OC SURVEY/FIELD SERVICES/BOUNDARY ANALYSIS & MAPPING	
		<b>SANTA ANA GARDENS (F02)</b> <b>BIKEWAY EXTENSION (PHASES 2-4)</b>			
		TOPOGRAPHIC MAP			
		FROM:FROM W. MONTA VISTA AVE.			
		TO: W. FIRST ST.			
		DATE OF SURVEY: DECEMBER, 2019		BY: T. LOFGREEN & PARTY	
		TOPOGRAPHIC MAPPING		BY: R. BELTRAN	
		OFFICE CHECK		BY: M. KUBISTY, PLS.	
		FIELD CHECK		BY: T. LOFGREEN & PARTY	
		SCALE: 1" = 20'		W.O. #EF17413S	
FILE: SANTA ANA GARDENS_TOPO_2019.DWG		FILE NO. 1920PW-IN0011			
MARK	DATE	ITEM		SHEET NO.  <b>5</b> of <b>11</b>	
REVISIONS					



SYMBOL PATTERN KEY

Pipe Inlet / Pipe Outlet

Fire Hydrant

Vault - Electrical

Steel Sign

Water Meter

Sewer Manhole

Single Light Pole

Water Valve

Pull box - Electrical

Fire Hydrant

Tree

Storm Drain Manhole

Vault Undefined

Traffic Pull Box

Gas Valve

Double Gate

Water Valve

Tree

Light Pole

Pull Box Unknown

Utility Pole

Mail Box

Post

Guy Anchor

Control Box Cable TV

LINE PATTERN KEY

Edge of Asphalt Pavement

Edge of Concrete Pavement

Flowline

Street Striping

Concrete Wall

Wood Fence

Hand Rail Steel

Building

Chain Link Fence

Wrought Iron Fence

Hinge Point

Grade Line

Block Wall

Center line

Right of Way Line

ABBREVIATIONS

RCP - Reinforced Concrete Pipe

PVC - Polyvinyl Chloride Pipe

FG - Finished Grade

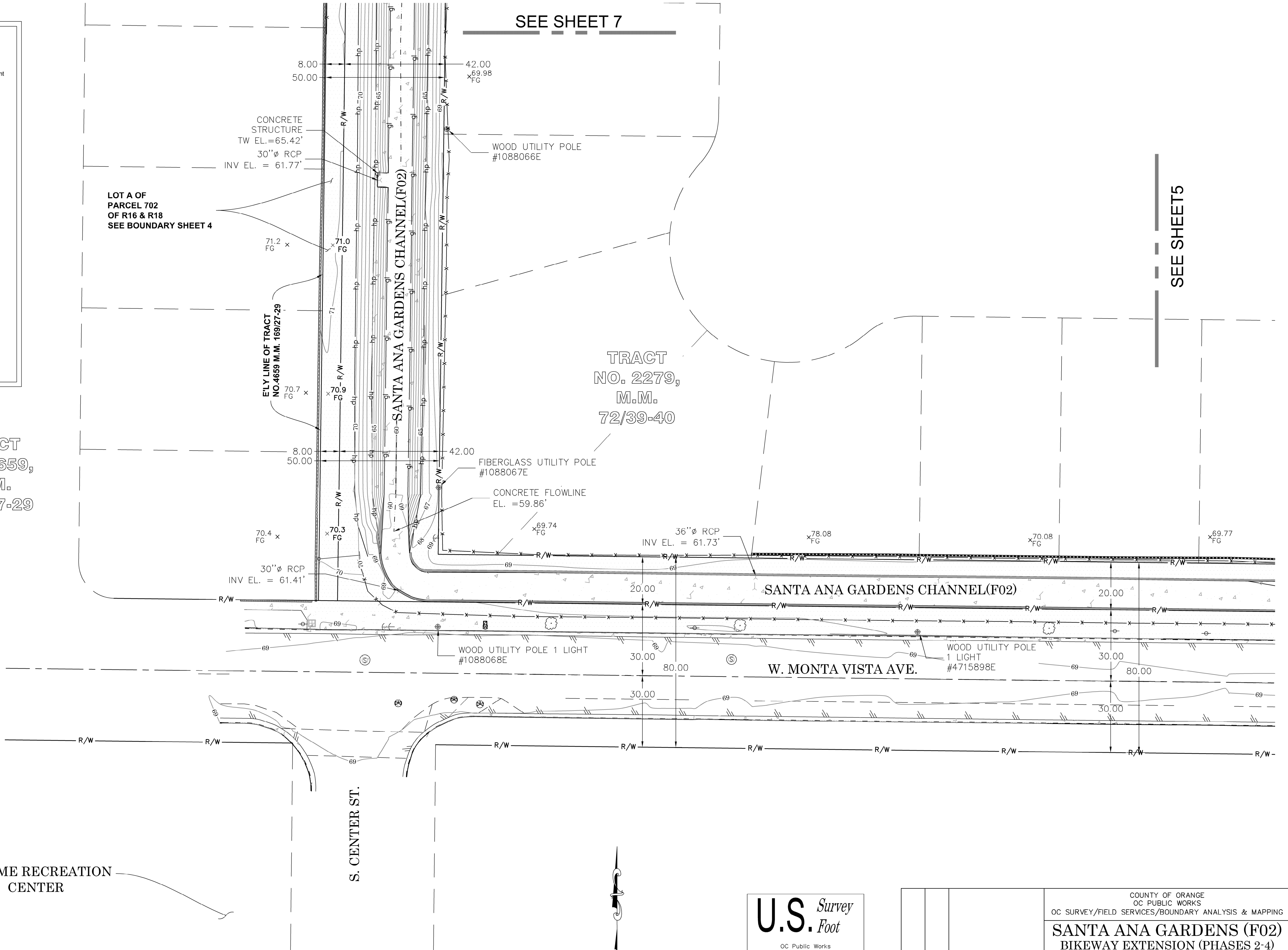
AREA PATTERN KEY

Concrete

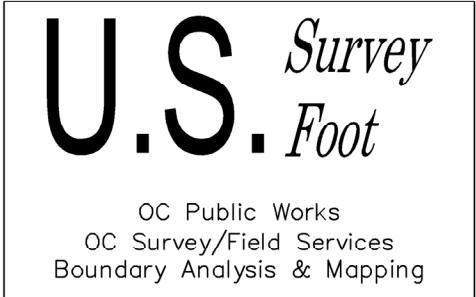
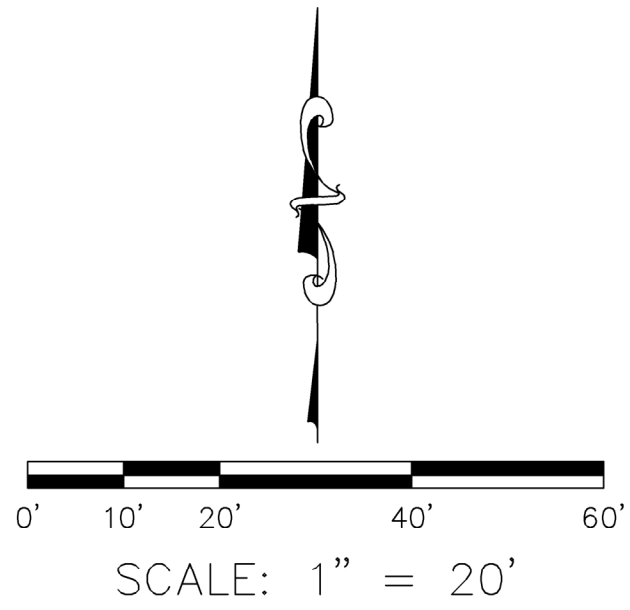
Dirt

Gravel

Grass



JEROME RECREATION CENTER



			COUNTY OF ORANGE OC PUBLIC WORKS OC SURVEY/FIELD SERVICES/BOUNDARY ANALYSIS & MAPPING		
			SANTA ANA GARDENS (F02) BIKEWAY EXTENSION (PHASES 2-4)		
			TOPOGRAPHIC MAP		
			FROM:FROM W. MONTA VISTA AVE.		
			TO: W. FIRST ST.		
			DATE OF SURVEY:DECEMBER, 2019	BY: T. LOFGREEN & PARTY	SHEET NO.  6 of 11
			TOPOGRAPHIC MAPPING	BY: R. BELTRAN	
			OFFICE CHECK	BY: M. KUBISTY, PLS.	
			FIELD CHECK	BY: T. LOFGREEN & PARTY	
MARK	DATE	ITEM	SCALE: 1" = 20'   W.O. #EF17413S   FILE NO. 1920PW-IN0011		
REVISIONS			FILE: SANTA ANA GARDENS_TOPO_2019.DWG		



SEE SHEET 8

LOT A OF  
PARCEL 702  
OF R16 & R18  
SEE BOUNDARY SHEET 4

73.9  
FG  
x  
8.00  
50.00

x73.7  
FG  
hp

4"Ø PVC  
INV EL. = 69.45'

42.00

WOOD UTILITY POLE  
1088061E

x71.15  
FG

x71.24  
FG

x71.28  
FG

x71.59  
FG

x71.16  
FG

CONCRETE FLOWLINE  
EL. = 60.64'

HEADWALL  
TW EL. = 69.31'  
SOFFIT EL. = 64.38'

WOOD UTILITY POLE  
#753630H

CATCH BASIN

WOOD UTILITY POLE  
#1088060E

W. WILLITS ST.

CATCH BASIN

CONCRETE FLOWLINE  
EL. = 60.49'

HEADWALL  
TW EL. = 70.81'  
SOFFIT EL. = 67.14'

WOOD UTILITY POLE  
#1088064E

71.1  
FG  
x

x71.5  
FG  
hp

x70.55  
FG

TRACT  
NO. 4659,  
M.M.  
169/27-29

TRACT  
NO. 2279,  
M.M.  
72/39-40

ELY LINE OF TRACT  
NO.4659 M.M. 169/27-29

SANTA ANA GARDENS CHANNEL(F02)

x70.58  
FG

x70.14  
FG

WOOD UTILITY POLE  
#1088065E

LOT A OF  
PARCEL 702  
OF R16 & R18  
SEE BOUNDARY SHEET 4

70.9  
FG  
x

x71.3  
FG  
hp

x69.98  
FG

SEE SHEET 6

## LEGEND

### SYMBOL PATTERN KEY

- Pipe Inlet / Pipe Outlet
- Fire Hydrant
- Vault - Electrical
- Steel Sign
- Water Meter
- Sewer Manhole
- Single Light Pole
- Water Valve
- Pull box - Electrical
- Fire Hydrant
- Tree
- Storm Drain Manhole
- Vault Undefined
- Traffic Pull Box
- Gas Valve
- Double Gate
- Water Valve
- Tree
- Light Pole
- Pull Box Unknown
- Utility Pole
- Mail Box
- Post
- Guy Anchor
- Control Box Cable TV

### LINE PATTERN KEY

- Edge of Asphalt Pavement
- Edge of Concrete Pavement
- Flowline
- Street Striping
- Concrete Wall
- Wood Fence
- Hand Rail Steel
- Building
- Chain Link Fence
- Wrought Iron Fence
- Hinge Point
- Grade Line
- Block Wall
- Center line
- Right of Way Line

### ABBREVIATIONS

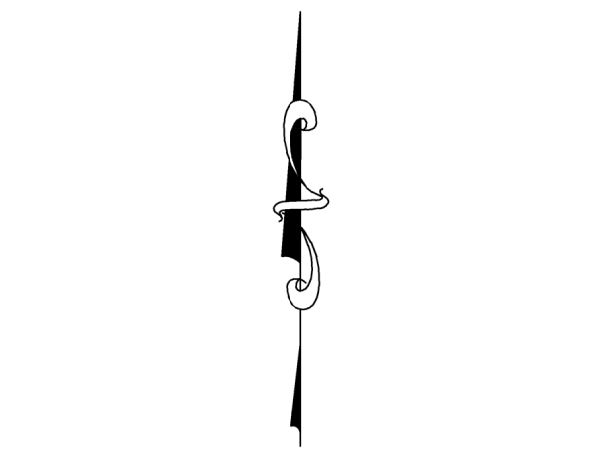
- RCP - Reinforced Concrete Pipe
- PVC - Polyvinyl Chloride Pipe
- FG - Finished Grade

### AREA PATTERN KEY

- Concrete
- Dirt
- Gravel
- Grass

U.S. Survey  
Foot

OC Public Works  
OC Survey/Field Services  
Boundary Analysis & Mapping



SCALE: 1" = 20'

COUNTY OF ORANGE  
OC PUBLIC WORKS  
OC SURVEY/FIELD SERVICES/BOUNDARY ANALYSIS & MAPPING

SANTA ANA GARDENS (F02)  
BIKEWAY EXTENSION (PHASES 2-4)

TOPOGRAPHIC MAP

FROM: FROM W. MONTA VISTA AVE.

TO: W. FIRST ST.

DATE OF SURVEY: DECEMBER, 2019

TOPOGRAPHIC MAPPING

OFFICE CHECK

FIELD CHECK

SCALE: 1" = 20' W.O. #EF174135 FILE NO. 1920PW-IN0011

FILE: SANTA ANA GARDENS\_TOPO\_2019.DWG

BY: T. LOFGREEN & PARTY  
BY: R. BELTRAN  
BY: M. KUBISTY, PLS.  
BY: T. LOFGREEN & PARTY

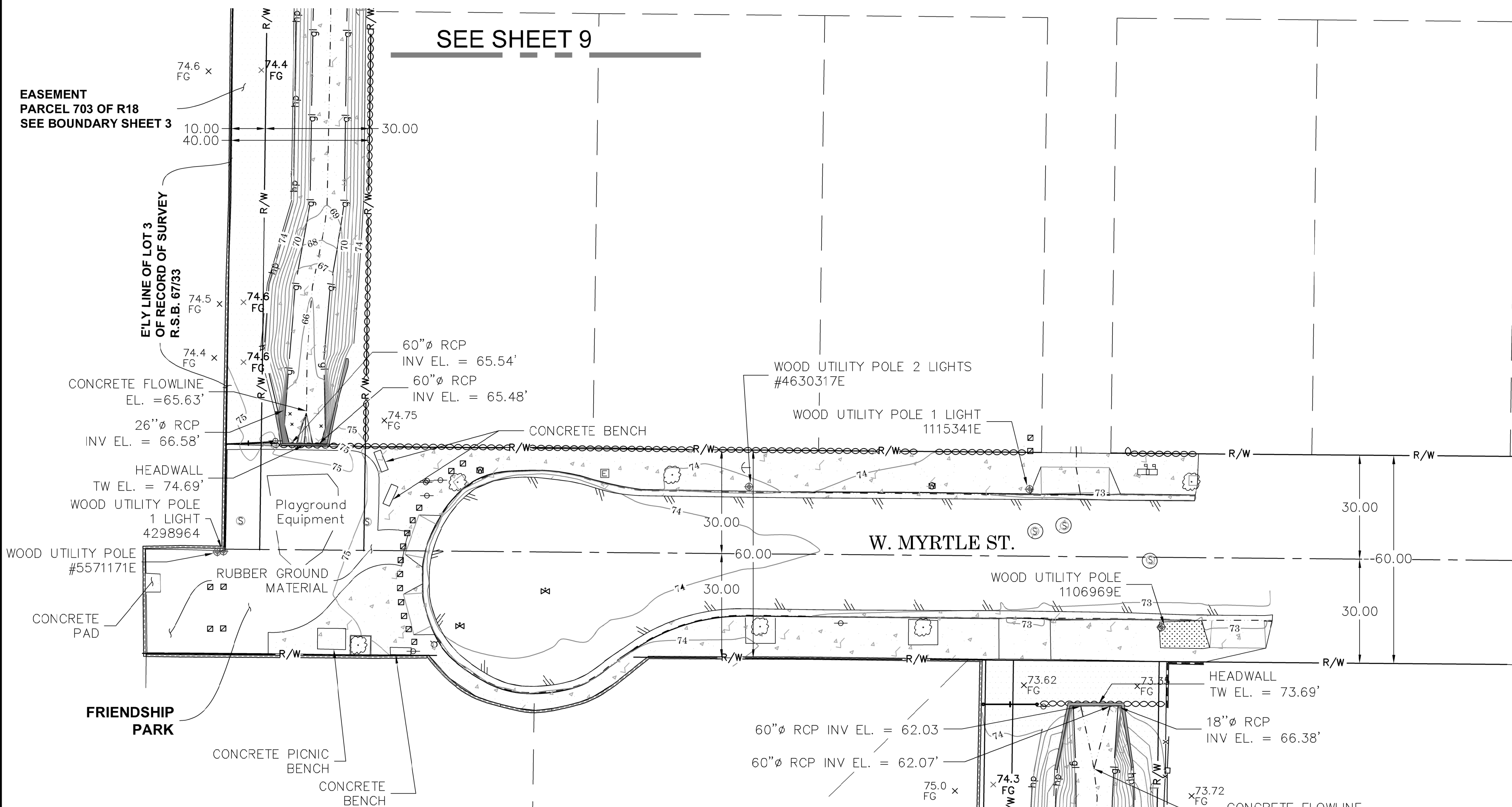
SHEET NO.  
7 of 11

REVISIONS



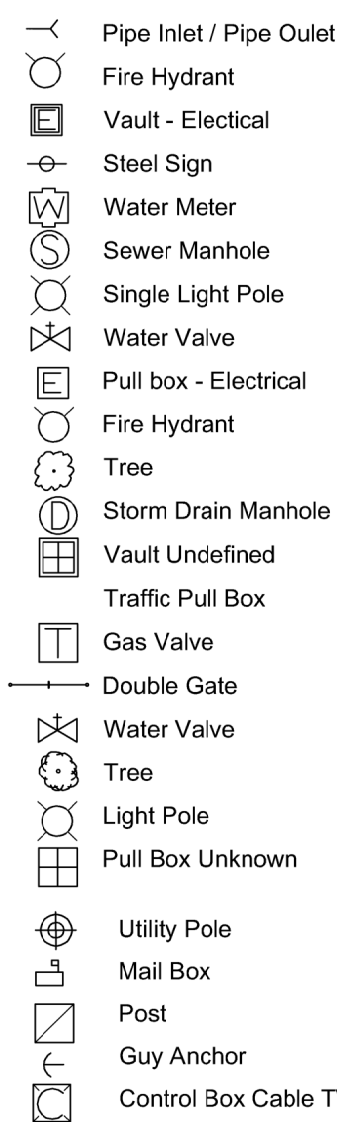
SEE SHEET 9

EASEMENT  
PARCEL 703 OF R18  
SEE BOUNDARY SHEET 3

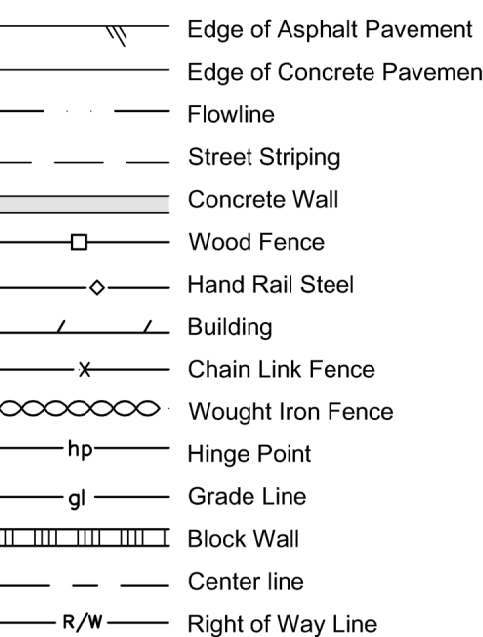


### LEGEND

#### SYMBOL PATTERN KEY



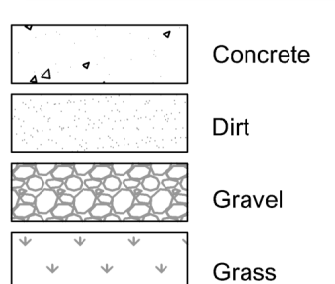
#### LINE PATTERN KEY



#### ABBREVIATIONS

RCP - Reinforced Concrete Pipe  
PVC - Polyvinyl Chloride Pipe  
FG - Finished Grade

#### AREA PATTERN KEY



TRACT  
NO. 4659,  
M.M.  
169/27-29

LOT A OF  
PARCEL 702  
OF R16 & R18  
SEE BOUNDARY SHEET 4

TRACT  
NO. 2279,  
M.M.  
72/39-40

SEE SHEET 7

U.S. Survey  
Foot

OC Public Works  
OC Survey/Field Services  
Boundary Analysis & Mapping



0' 10' 20' 40' 60'

SCALE: 1" = 20'

COUNTY OF ORANGE OC PUBLIC WORKS OC SURVEY/FIELD SERVICES/BOUNDARY ANALYSIS & MAPPING	
SANTA ANA GARDENS (F02) BIKEWAY EXTENSION (PHASES 2-4)	
TOPOGRAPHIC MAP	
FROM: FROM W. MONTA VISTA AVE.	
TO: W. FIRST ST.	
DATE OF SURVEY: DECEMBER, 2019	BY: T. LOFGREEN & PARTY
TOPOGRAPHIC MAPPING	BY: R. BELTRAN
OFFICE CHECK	BY: M. KUBISTY, PLS.
FIELD CHECK	BY: T. LOFGREEN & PARTY
SCALE: 1" = 20'	W.O. #F174135
FILE: SANTA ANA GARDENS_TOPO_2019.DWG	FILE NO. 1920PW-IN0011

MARK	DATE	ITEM
REVISIONS		

SHEET NO.  
8  
of  
11



RECORD OF  
SURVEY,  
R.S.B. 67/33

SEE SHEET 10

LEGEND

SYMBOL PATTERN KEY

- Pipe Inlet / Pipe Outlet
- Fire Hydrant
- Vault - Electrical
- Steel Sign
- Water Meter
- Sewer Manhole
- Single Light Pole
- Water Valve
- Pull box - Electrical
- Fire Hydrant
- Tree
- Storm Drain Manhole
- Vault Undefined
- Traffic Pull Box
- Gas Valve
- Double Gate
- Water Valve
- Tree
- Light Pole
- Pull Box Unknown
- Utility Pole
- Mail Box
- Post
- Guy Anchor
- Control Box Cable TV

LINE PATTERN KEY

- Edge of Asphalt Pavement
- Edge of Concrete Pavement
- Flowline
- Street Striping
- Concrete Wall
- Wood Fence
- Hand Rail Steel
- Building
- Chain Link Fence
- Wrought Iron Fence
- Hinge Point
- Grade Line
- Block Wall
- Center line
- Right of Way Line

ABBREVIATIONS

- RCP - Reinforced Concrete Pipe
- PVC - Polyvinyl Chloride Pipe
- FG - Finished Grade

AREA PATTERN KEY

- Concrete
- Dirt
- Gravel
- Grass

EASEMENT  
PARCEL 703 OF R18  
SEE BOUNDARY SHEET 3

RECORD OF  
SURVEY,  
R.S.B. 67/33

TRACT  
NO. 2752,  
M.M.  
79/30-31

TRACT  
NO. 2752,  
M.M.  
79/30-31

SANTA ANA GARDENS CHANNEL(F02)

U.S. Survey  
Foot

OC Public Works  
OC Survey/Field Services  
Boundary Analysis & Mapping

SEE SHEET 8

			COUNTY OF ORANGE OC PUBLIC WORKS OC SURVEY/FIELD SERVICES/BOUNDARY ANALYSIS & MAPPING				SHEET NO.  9 of 11
			SANTA ANA GARDENS (F02) BIKEWAY EXTENSION (PHASES 2-4)				
			TOPOGRAPHIC MAP				
			FROM: FROM W. MONTA VISTA AVE.				
			TO: W. FIRST ST.				
			DATE OF SURVEY: DECEMBER, 2019	BY: T. LOFGREEN & PARTY			
			TOPOGRAPHIC MAPPING	BY: R. BELTRAN			
			OFFICE CHECK	BY: M. KUBISTY, PLS.			
			FIELD CHECK	BY: T. LOFGREEN & PARTY			
			SCALE: 1" = 20'	W.O. #EF17413S	FILE NO. 1920PW-IN0011		
MARK	DATE	ITEM	FILE: SANTA ANA GARDENS_TOPO_2019.DWG				
REVISIONS							

0' 10' 20' 40' 60'

SCALE: 1" = 20'



PARCEL  
MAP,  
P.M.B.  
2/41

EASEMENT  
PARCEL 703 OF R18  
SEE BOUNDARY SHEET 3

SEE SHEET 11

TRACT NO.  
2752,  
M.M.  
79/30-31

RECORD OF  
SURVEY,  
R.S.B. 67/33

SEE SHEET 9

SYMBOL PATTERN KEY

- Pipe Inlet / Pipe Outlet
- Fire Hydrant
- Vault - Electrical
- Steel Sign
- Water Meter
- Sewer Manhole
- Single Light Pole
- Water Valve
- Pull box - Electrical
- Fire Hydrant
- Tree
- Storm Drain Manhole
- Vault Undefined
- Traffic Pull Box
- Gas Valve
- Double Gate
- Water Valve
- Tree
- Light Pole
- Pull Box Unknown
- Utility Pole
- Mail Box
- Post
- Guy Anchor
- Control Box Cable TV

LEGEND

LINE PATTERN KEY

- Edge of Asphalt Pavement
- Edge of Concrete Pavement
- Flowline
- Street Striping
- Concrete Wall
- Wood Fence
- Hand Rail Steel
- Building
- Chain Link Fence
- Wrought Iron Fence
- Hinge Point
- Grade Line
- Block Wall
- Center line
- Right of Way Line

ABBREVIATIONS

- RCP - Reinforced Concrete Pipe
- PVC - Polyvinyl Chloride Pipe
- FG - Finished Grade

AREA PATTERN KEY

- Concrete
- Dirt
- Gravel
- Grass

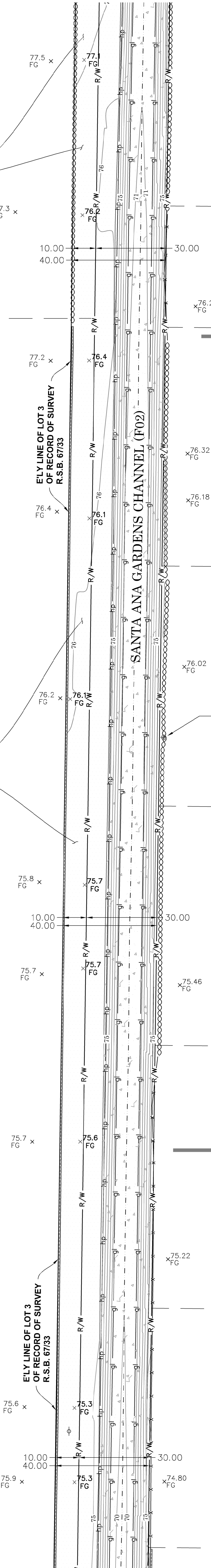
U.S. Survey  
Foot

OC Public Works  
OC Survey/Field Services  
Boundary Analysis & Mapping



0' 10' 20' 40' 60'

SCALE: 1" = 20'



			COUNTY OF ORANGE OC PUBLIC WORKS OC SURVEY/FIELD SERVICES/BOUNDARY ANALYSIS & MAPPING		
			SANTA ANA GARDENS (F02) BIKEWAY EXTENSION (PHASES 2-4)		
			TOPOGRAPHIC MAP		
			FROM: FROM W. MONTA VISTA AVE.		
			TO: W. FIRST ST.		
			DATE OF SURVEY: DECEMBER, 2019	BY: T. LOFGREEN & PARTY	
			TOPOGRAPHIC MAPPING	BY: R. BELTRAN	
			OFFICE CHECK	BY: M. KUBISTY, PLS.	
			FIELD CHECK	BY: T. LOFGREEN & PARTY	
			SCALE: 1" = 20'	W.O. #EF17413S	FILE NO. 1920PW-IN0011
			FILE: SANTA ANA GARDENS_TOPO_2019.DWG		
MARK	DATE	ITEM	SHEET NO.  10 of 11		
REVISIONS					

SHEET NO.  
10  
of  
11



