

BASIS OF BEARINGS

THE BASIS OF BEARINGS FOR THIS SURVEY IS BASED ON THE CALIFORNIA COORDINATE SYSTEM (CCS83), ZONE VI, NAD 83, OCS (2017.50) EPOCH ADJUSTMENT, AS DETERMINED LOCALLY BY A LINE BETWEEN CONTINUOUS GLOBAL POSITIONING STATIONS CGPS STATIONS SACY AND TRAK BEING NORTH 30°42'07" WEST AS DERIVED FROM THE COORDINATES PUBLISHED BY THE CALIFORNIA SPATIAL REFERENCE CENTER (CSRC) ALONG WITH DATA SHEETS ON FILE IN THE OFFICE OF THE ORANGE COUNTY SURVEYOR.

HORIZONTAL DATUM

COORDINATES SHOWN ARE BASED ON THE CALIFORNIA COORDINATE SYSTEM (CCS83), ZONE VI, NAD 83, OCS (2017.50) EPOCH ADJUSTMENT.

ALL DISTANCES SHOWN ARE GRID, UNLESS OTHERWISE NOTED. TO OBTAIN GROUND DISTANCES MULTIPLY GRID BY A COMBINED FACTOR OF 1.00002620.

THIS COMBINATION FACTOR WAS HELD AT: CP# 5  
N: 2184483.038 E: 6069826.285 EL: 23.87'

ALL DISTANCES ARE BASED ON THE U.S. SURVEY FOOT.

VERTICAL DATUM

NAVD 1988 (O.C.S. 1995 ADJUSTMENT)

ELEVATIONS SHOWN HEREON WERE HELD AT CALIFORNIA SPATIAL REFERENCE SYSTEM CONTINUOUS GLOBAL POSITIONING STATION (CGPS) "TRAK" ELEVATION (ORTHOMETRIC HEIGHT)=495.18'

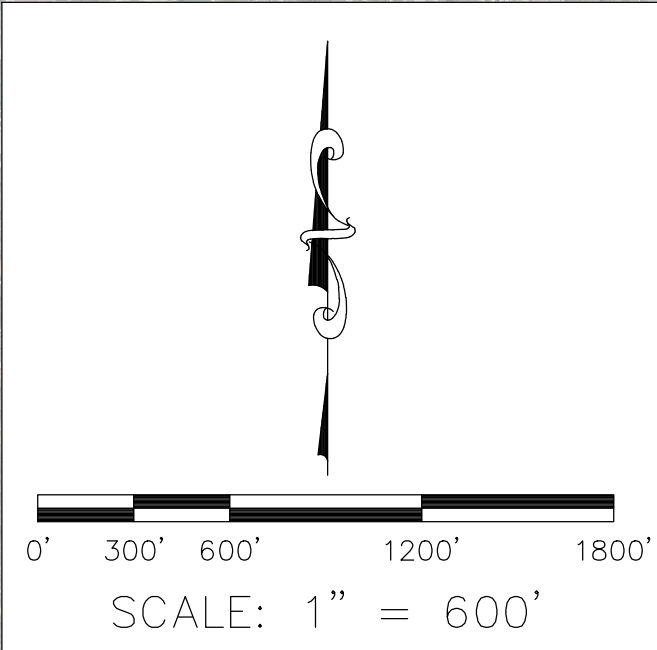
PURPOSE OF SURVEY

THE PURPOSE OF THIS SURVEY WAS TO PROVIDE A TOPOGRAPHY TO BE USED IN A HYDRAULIC STUDY. THE INTENT OF THIS TOPOGRAPHY IS TO REFLECT OVERALL DRAINAGE, AND NOT TO BE USED FOR THE DESIGN OF FIXED WORKS, NOR LAND ACQUISITION OR BOUNDARY PURPOSES.

THE TERRAIN DATA SHOWN HEREON WAS COMPILED FROM AERIAL LIDAR PHOTOGRAMMETRY, AND CONVENTIONAL SURVEY DATA PERFORMED BY OC SURVEY. THIS DATA WAS MERGED WITH UNITED STATES GEOLOGICAL SURVEY (USGS) LIDAR DATA AND SHIFTED TO THE DATUMS STATED HEREIN.

SAN DIEGO CREEK(F05) AND  
LANE CHANNEL (F08)  
HYDRAULIC STUDY/SCOURS  
CONTROL MAP

SEE SHEET 2



U.S. Survey  
Foot  
OC Public Works  
OC Survey/Field Services  
Boundary Analysis & Mapping

			COUNTY OF ORANGE OC PUBLIC WORKS OC SURVEY/FIELD SERVICES/BOUNDARY ANALYSIS & MAPPING				
			SAN DIEGO CREEK (F05)& LANE CHANNEL(F08)				
			CONTROL MAP				
			PROJECT LIMITS: ALONG SDC: JAMBOREE RD TO CONFLUENCE WITH PETER'S CYN WASH ALONG LANE CHANNEL: SAN DIEGO CREEK TO MACARTHUR BLVD				
			DATE OF SURVEY:10/23/2023		BY:RUSSO/PAYAN & CREW		SHEET NO.  1 of 2
			MAPPING		BY:R. CASANAVE		
			OFFICE CHECK		BY:MICHAEL KUBISTY, PLS		
			FIELD CHECK		BY:BELTRAN & RODRIGUEZ		
			SCALE: 1" = 600'		FILE #2324PW-CP0003		
			FILE:SAN DIEGO CREEK HYDRAULIC_CONTROL.DWG				
MARK	DATE	ITEM	REVISIONS				



SAN DIEGO CREEK(F05) AND  
LANE CHANNEL (F08)  
HYDRAULIC STUDY/SCOURS  
CONTROL MAP

BASIS OF BEARINGS

THE BASIS OF BEARINGS FOR THIS SURVEY IS BASED ON THE CALIFORNIA COORDINATE SYSTEM (CCS83), ZONE VI, NAD 83, OCS (2017.50) EPOCH ADJUSTMENT, AS DETERMINED LOCALLY BY A LINE BETWEEN CONTINUOUS GLOBAL POSITIONING STATIONS CGPS STATIONS SACY AND TRAK BEING NORTH 30°42'07" WEST AS DERIVED FROM THE COORDINATES PUBLISHED BY THE CALIFORNIA SPATIAL REFERENCE CENTER (CSRC) ALONG WITH DATA SHEETS ON FILE IN THE OFFICE OF THE ORANGE COUNTY SURVEYOR.

HORIZONTAL DATUM

COORDINATES SHOWN ARE BASED ON THE CALIFORNIA COORDINATE SYSTEM (CCS83), ZONE VI, NAD 83, OCS (2017.50) EPOCH ADJUSTMENT.

ALL DISTANCES SHOWN ARE GRID, UNLESS OTHERWISE NOTED. TO OBTAIN GROUND DISTANCES MULTIPLY GRID BY A COMBINED FACTOR OF 1.00002620.

THIS COMBINATION FACTOR WAS HELD AT: CP# 5  
N:2184483.038 E:6069826.285 EL:23.87'

ALL DISTANCES ARE BASED ON THE U.S. SURVEY FOOT.

VERTICAL DATUM

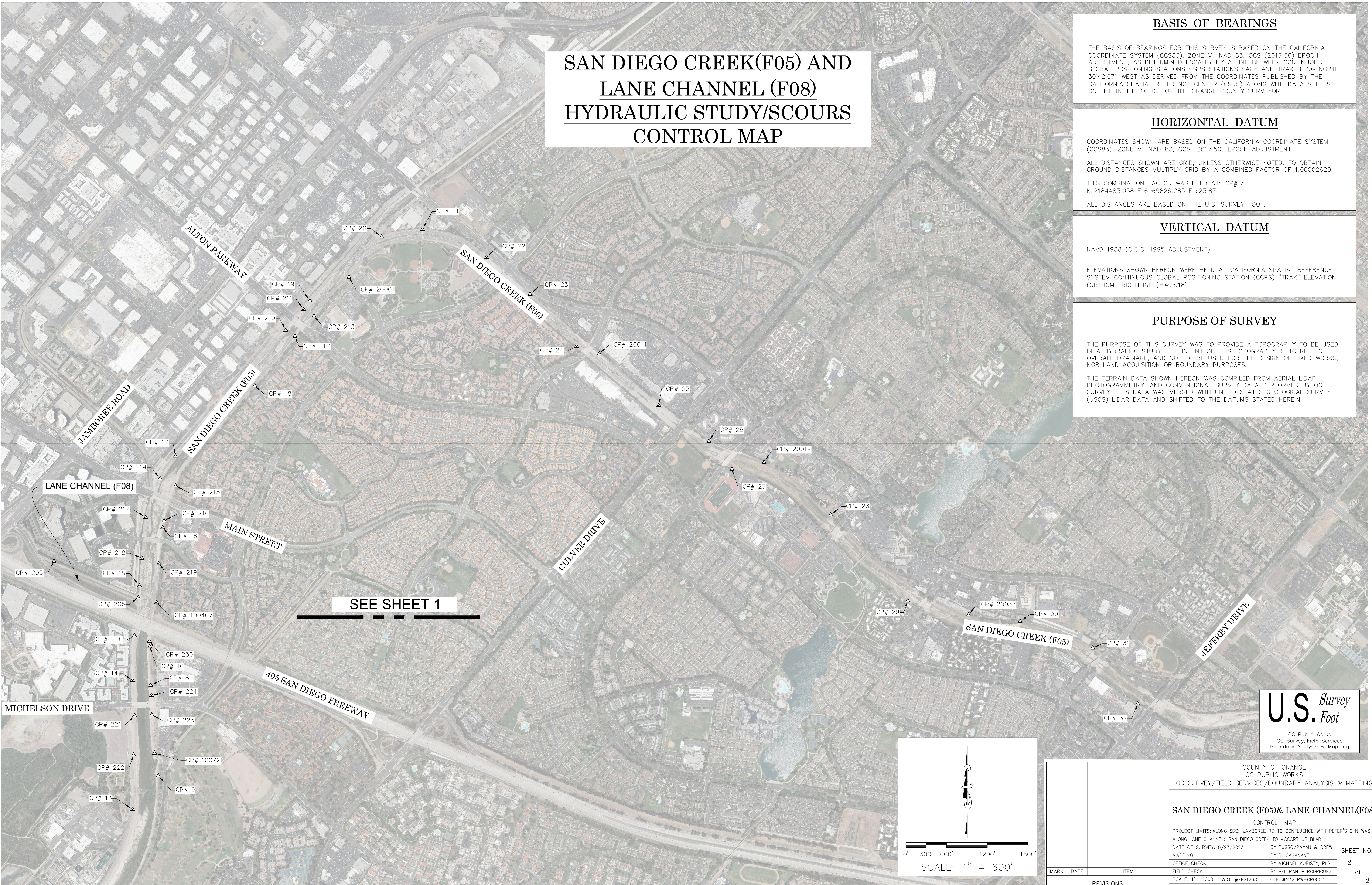
NAVD 1988 (O.C.S. 1995 ADJUSTMENT)

ELEVATIONS SHOWN HEREON WERE HELD AT CALIFORNIA SPATIAL REFERENCE SYSTEM CONTINUOUS GLOBAL POSITIONING STATION (CGPS) "TRAK" ELEVATION (ORTHOMETRIC HEIGHT)=495.18'

PURPOSE OF SURVEY

THE PURPOSE OF THIS SURVEY WAS TO PROVIDE A TOPOGRAPHY TO BE USED IN A HYDRAULIC STUDY. THE INTENT OF THIS TOPOGRAPHY IS TO REFLECT OVERALL DRAINAGE, AND NOT TO BE USED FOR THE DESIGN OF FIXED WORKS, NOR LAND ACQUISITION OR BOUNDARY PURPOSES.

THE TERRAIN DATA SHOWN HEREON WAS COMPILED FROM AERIAL LIDAR PHOTOGRAMMETRY, AND CONVENTIONAL SURVEY DATA PERFORMED BY OC SURVEY. THIS DATA WAS MERGED WITH UNITED STATES GEOLOGICAL SURVEY (USGS) LIDAR DATA AND SHIFTED TO THE DATUMS STATED HEREIN.



U.S. Survey  
Foot

OC Public Works  
OC Survey/Field Services  
Boundary Analysis & Mapping