

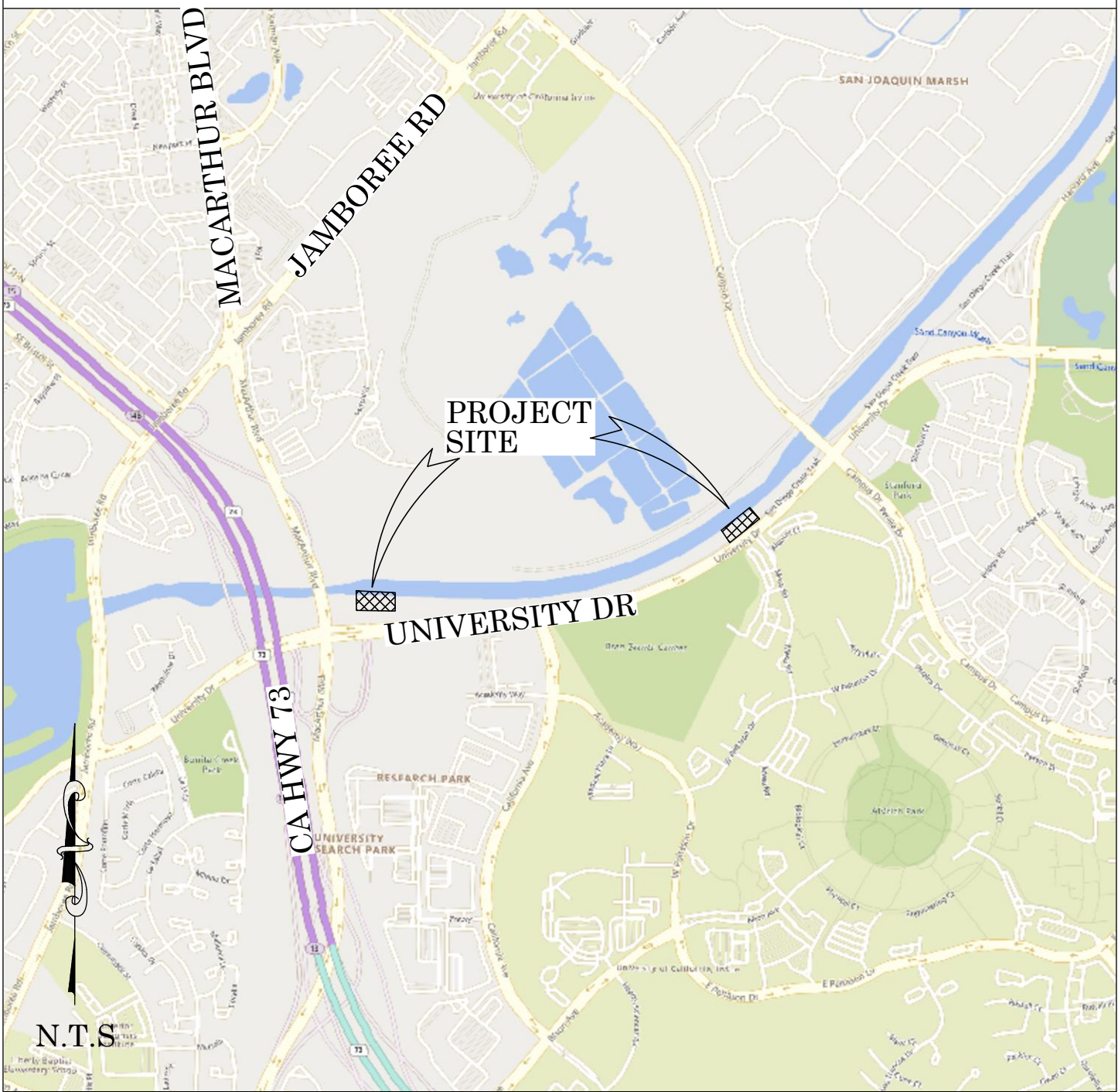


OC PUBLIC WORKS DEPARTMENT
JAMES TREADAWAY, DIRECTOR OF PUBLIC WORKS
KEVIN HILLS, COUNTY SURVEYOR
SAN DIEGO CREEK CHANNEL REACH 1



PILOT SEDIMENT REMOVAL

LOCATION MAP



SENIOR LAND SURVEYOR'S CERTIFICATE:

THIS MAP CORRECTLY REPRESENTS A SURVEY MADE BY ME OR UNDER MY DIRECTION IN CONFORMANCE WITH REQUIREMENTS OF THE PROFESSIONAL LAND SURVEYOR'S ACT; THIS 12 DAY OF NOVEMBER, 2021.

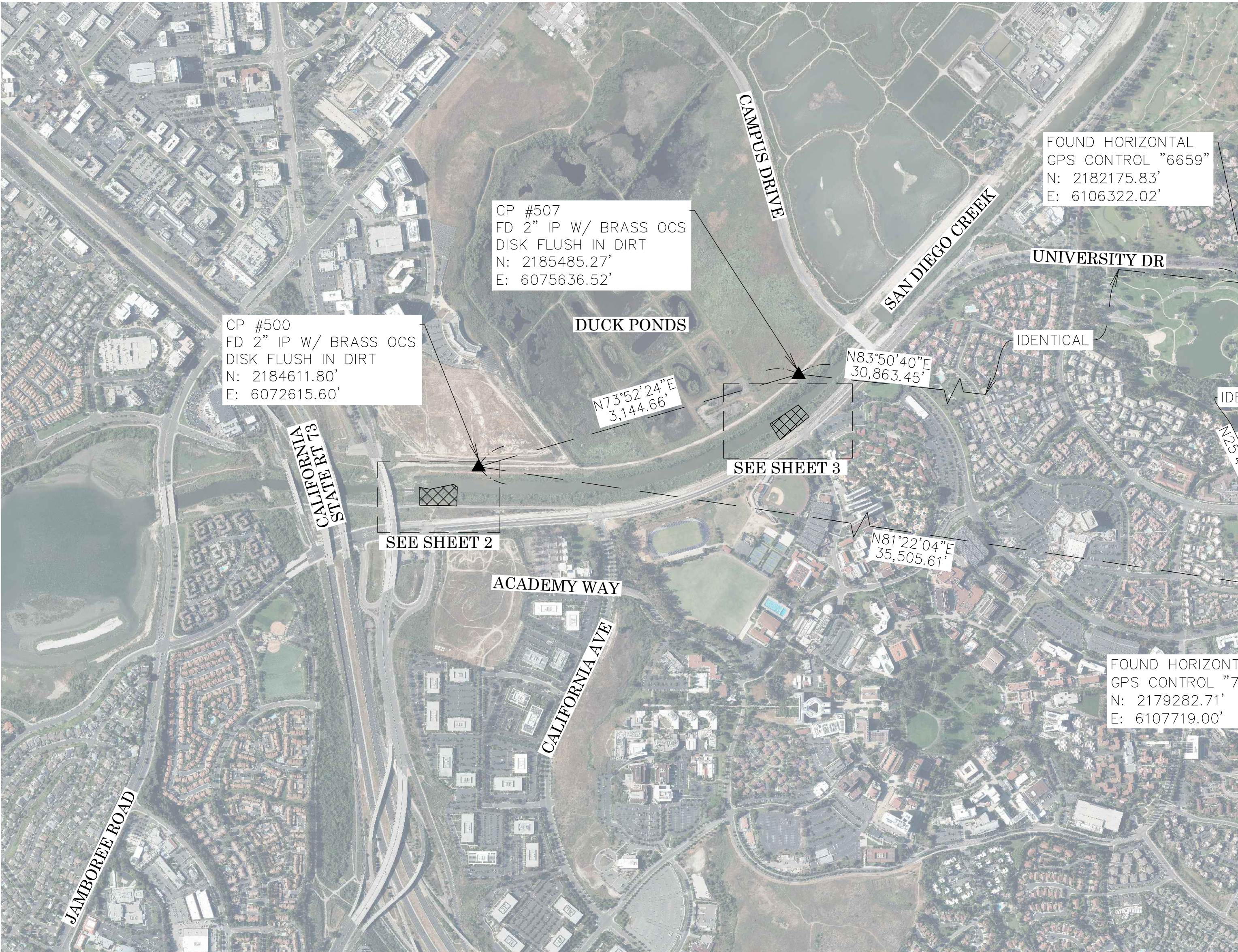
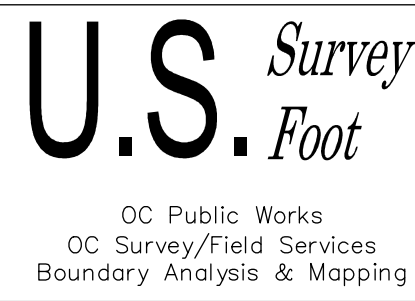
ELLIOTT MEDINA, PLS. SENIOR LAND SURVEYOR



DEPUTY COUNTY SURVEYOR'S STATEMENT:

THIS MAP HAS BEEN EXAMINED IN ACCORDANCE WITH THE PROFESSIONAL LAND SURVEYOR'S ACT; THIS 12 DAY OF NOVEMBER, 2021.

WADE WEAVER, PLS. DEPUTY COUNTY SURVEYOR



BASIS OF BEARINGS

THE BASIS OF BEARINGS FOR THIS SURVEY IS BASED ON THE CALIFORNIA COORDINATE SYSTEM (CCS83), ZONE VI, NAD 83, OCS (1991.35) EPOCH ADJUSTMENT, AS DETERMINED LOCALLY BY A LINE BETWEEN COUNTY GPD HORIZONTAL CONTROL POINT STATIONS (6659) AND (7528) BEING NORTH 25°45'27\"/>

HORIZONTAL DATUM

COORDINATES SHOWN ARE BASED ON THE CALIFORNIA COORDINATE SYSTEM (CCS83), ZONE VI, NAD 83, OCS (1991.35) EPOCH ADJUSTMENT.

ALL DISTANCES SHOWN ARE GRID, UNLESS OTHERWISE NOTED. TO OBTAIN GROUND DISTANCES MULTIPLY GRID BY A COMBINED FACTOR OF 1.00002886. A LEGACY PROJECT AVERAGE COMBINATION FACTOR WAS HELD PER SURVEY #9890P5444.

ALL DISTANCES ARE BASED ON THE U.S. SURVEY FOOT.

VERTICAL DATUM

O.C.S. BM. 3FF-6-77 ELEV. = 32.481' YEAR LEVELED: 1991

NGVD29 1929 (O.C.S. 1995 ADJUSTMENT)

DESCRIPTION: FOUND 3 3/4\"/>

NOTES

THE SURVEY INFORMATION SHOWN HEREON IS TO BE USED FOR TOPOGRAPHIC RELATIONSHIPS ONLY AND IS NOT INTENDED FOR LAND ACQUISITION OR BOUNDARY PURPOSES.

SHEET INDEX

SHEET	NO.	DESCRIPTION
SHEET 1	1	TITLE SHEET
SHEETS 2-3	2-3	TOPOGRAPHIC MAP

BASIS OF STATIONING

THE BASIS FOR STATIONING 30+06.06 PER RECORD PLAN F05-701-06 DATED FEBRUARY 22,1982. HELD AT THE INTERSECTION OF MACARTHUR BLVD AND SAN DIEGO CREEK CHANNEL.

PURPOSE OF SURVEY

THE PURPOSE OF THE SURVEY IS TO PROVIDE A TOPOGRAPHIC MAP FOR THIS PORTION OF THE SAN DIEGO CREEK CHANNEL.

TOPOGRAPHIC MAPPING PROJECT

			COUNTY OF ORANGE OC PUBLIC WORKS OC SURVEY/FIELD SERVICES/BOUNDARY ANALYSIS & MAPPING			
			SAN DIEGO CREEK CHANNEL REACH 1 PILOT SEDIMENT REMOVAL			
			TITLE SHEET			
			PROJECT LIMITS: ALONG THE RIGHT SIDE OF THE SAN DIEGO CREEK CHANNEL, FROM STA 34+70 TO 35+70 AND FROM STA 68+70 TO STA 69+87.			
			DATE OF SURVEY: 10/25/2021	BY: R. MACIAS, PLS & CREW	SHEET NO. 1 of 3	
			MAPPING	BY: J. PEDRETTI		
			OFFICE CHECK	BY: E. MEDINA, PLS		
			FIELD CHECK	BY: R. MACIAS, PLS & CREW		
MARK	DATE	ITEM	SCALE: N.T.S.	W.O. #EF21268	FILE #2122PW-PR0001	
		REVISIONS	FILE: SAN DIEGO CREEK REACH1_TOPO_2021.DWG			



LEGEND

SYMBOL

△ Control Point

AREA PATTERN KEY

Dirt

LINE PATTERN KEY

Centerline

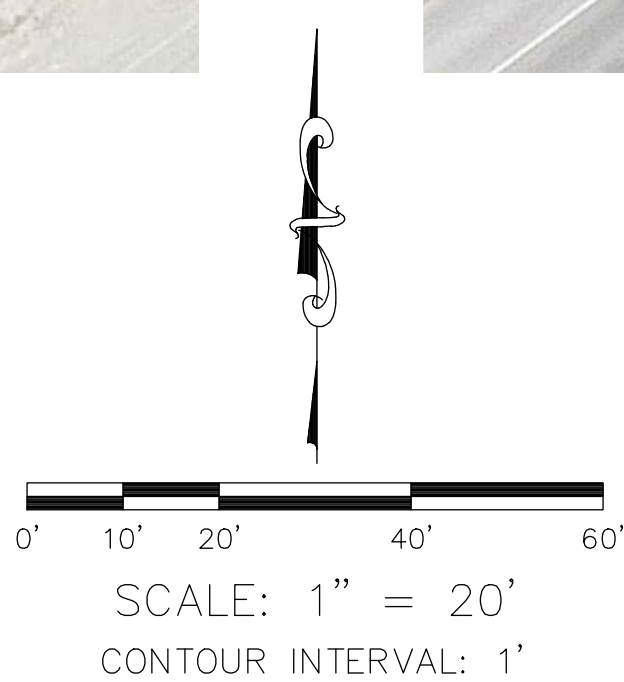
ABBREVIATION

CP Control Point
EL Elevation

NOTES

ALL BOUNDARY LINES NOT SHOWN IN BOLD ARE FOR GRAPHICAL REPRESENTATION ONLY.

TREES AND VEGETATION WERE NOT A PART OF THE FIELD SURVEY SCOPE.



U.S. Foot

OC Public Works
OC Survey/Field Services
Boundary Analysis & Mapping

			COUNTY OF ORANGE OC PUBLIC WORKS OC SURVEY/FIELD SERVICES/BOUNDARY ANALYSIS & MAPPING	
			SAN DIEGO CREEK CHANNEL REACH 1 PILOT SEDIMENT REMOVAL	
			TOPOGRAPHIC MAP	
			PROJECT LIMITS: ALONG THE RIGHT SIDE OF THE SAN DIEGO CREEK CHANNEL, FROM STA 34+70 TO 35+70 AND FROM STA 68+70 TO STA 69+87.	
			DATE OF SURVEY: 10/25/2021	BY: R. MACIAS, PLS & CREW
			MAPPING	BY: J. PEDRETTI
			OFFICE CHECK	BY: E. MEDINA, PLS
			FIELD CHECK	BY: R. MACIAS, PLS & CREW
			SCALE: 1" = XX'	W.O. #EF21268
			FILE #2122PW-PR0001	
			FILE: SAN DIEGO CREEK REACH1_TOPO_2021.DWG	
MARK	DATE	ITEM		
REVISIONS				
			SHEET NO. 3 of 3	