

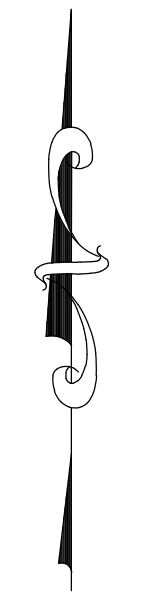
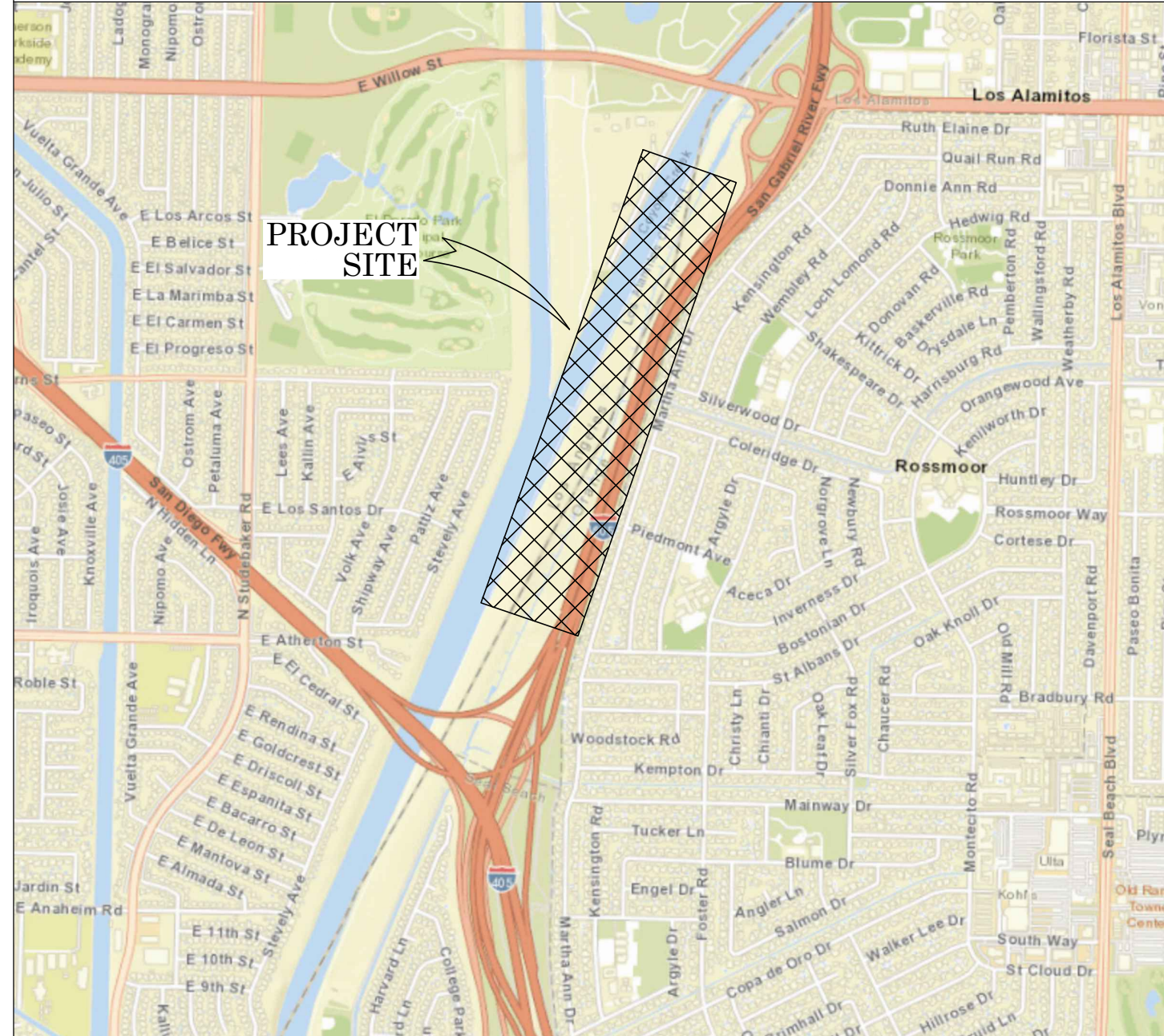


OC PUBLIC WORKS DEPARTMENT
JAMES TREADAWAY DIRECTOR
KEVIN HILLS, COUNTY SURVEYOR
ROSSMOOR RETARDING BASIN B02



PROFILE OF EASTERLY A/C/ FLOW LINE OF
THE WESTERLY ACCESS ROAD

LOCATION MAP



N.T.S.

SENIOR LAND SURVEYOR'S CERTIFICATE:

THIS MAP CORRECTLY REPRESENTS A SURVEY MADE BY ME OR UNDER MY DIRECTION IN CONFORMANCE WITH REQUIREMENTS OF THE PROFESSIONAL LAND SURVEYORS' ACT; THIS 5 DAY OF JULY, 2023.

MICHAEL KUBISTY, PLS. SENIOR LAND SURVEYOR

SENIOR LAND SURVEYOR'S CERTIFICATE:

THIS MAP CORRECTLY REPRESENTS A SURVEY MADE BY ME OR UNDER MY DIRECTION IN CONFORMANCE WITH REQUIREMENTS OF THE PROFESSIONAL LAND SURVEYORS' ACT; THIS 5 DAY OF JULY, 2023.

JESOM MORENO, PLS. SENIOR LAND SURVEYOR

U.S. Survey Foot

OC Public Works/Engineering Services
OC Survey/Field Services
Boundary Analysis & Mapping



BASIS OF BEARINGS

THE BASIS OF BEARINGS FOR THIS SURVEY IS BASED ON THE CALIFORNIA COORDINATE SYSTEM (CCS83), ZONE VI, NAD 83, OCS (2007.00) EPOCH ADJUSTMENT, AS DETERMINED LOCALLY BY A LINE BETWEEN CONTINUOUS GLOBAL POSITIONING STATIONS CGPS STATIONS (BLSA) AND (CCCS) BEING NORTH 66°06'41" EAST AS DERIVED FROM THE COORDINATES PUBLISHED BY THE CALIFORNIA SPATIAL REFERENCE CENTER (CSRC) ALONG WITH DATA SHEETS ON FILE IN THE OFFICE OF THE ORANGE COUNTY SURVEYOR.

HORIZONTAL DATUM

COORDINATES SHOWN ARE BASED ON THE CALIFORNIA COORDINATE SYSTEM (CCS83), ZONE VI, NAD 83, OCS (2007.00) EPOCH ADJUSTMENT.

ALL DISTANCES SHOWN ARE GRID, UNLESS OTHERWISE NOTED. TO OBTAIN GROUND DISTANCES MULTIPLY GRID BY A COMBINED FACTOR OF 1.00001940 THIS COMBINATION FACTOR WAS HELD AT POINT #800
N:2234052.512 E:6003222.180

ALL DISTANCES ARE BASED ON THE U.S. SURVEY FOOT.

VERTICAL DATUM

O.C.S. BM. CC-6 ELEV.=39.823' YEAR LEVELED 2005

NAVD88 (O.C.S. 2005 ADJUSTMENT)

DESCRIBED BY OCS 2002 - 3 3/4" US ARMY CORPS OF ENGINEERS BRONZE DISK STAMPED "CC6 1957", SET IN THE EASTERLY END OF A CONCRETE BRIDGE. MONUMENT IS LOCATED IN THE EASTERLY PORTION OF THE INTERSECTION OF CERRITOS AVENUE AND THE COYOTE CREEK OVER CROSSING, 1.0 FT. SOUTHERLY OF THE CENTERLINE OF CERRITOS AVENUE AND 120 FT. EASTERLY OF THE CENTERLINE OF THE COYOTE CREEK CHANNEL. MONUMENT IS SET 1.0 FT. ABOVE THE ROAD.

BASIS OF STATIONING

THE BASIS OF STATIONING SHOWN HEREON WAS DERIVED BY HOLDING A STATION OF 154+52.36 (PER R3) AT THE INTERSECTION OF LINE ESTABLISHMENT NOTE ① AND THE CENTERLINE OF THE LOS ALAMITOS CHANNEL (R3) AND INCREASING N'ELY AS SHOWN. ON EXISTING PROJECT TITLED ROSSMOOR RETARDING BASIN B02 & LOS ALAMITOS CHANNEL, PID 1920PW-IN0015, SIGNED APRIL 20, 2021.

ALIGNMENT ESTABLISHMENT

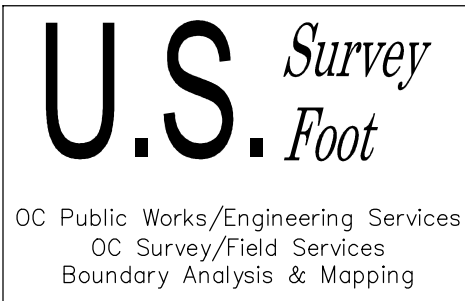
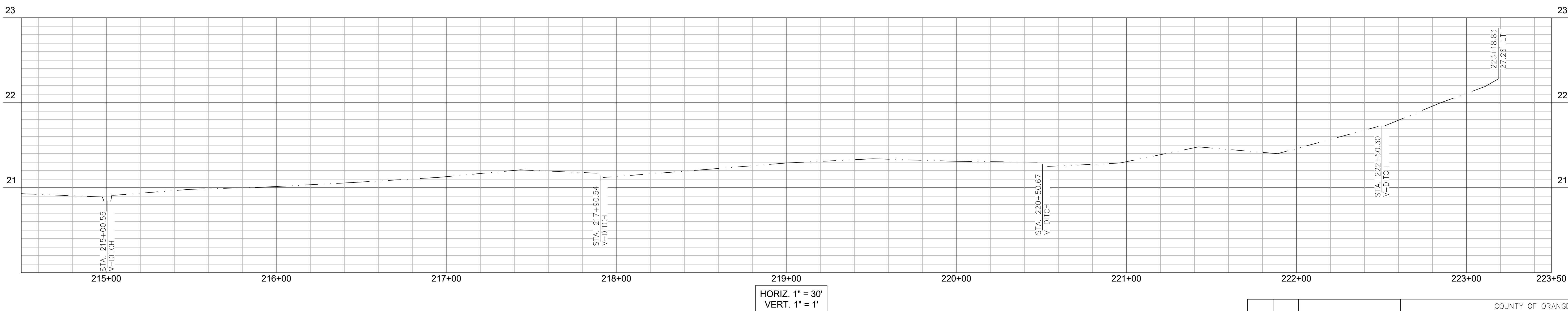
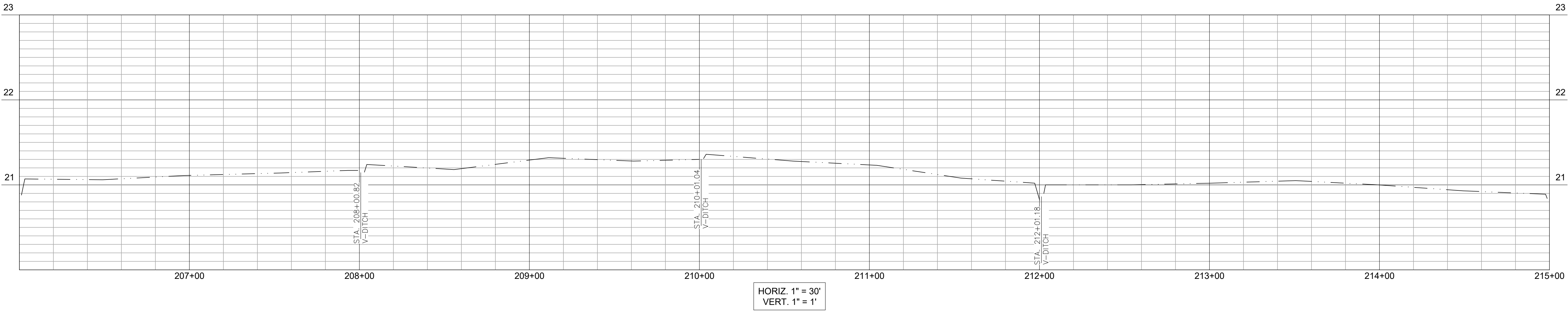
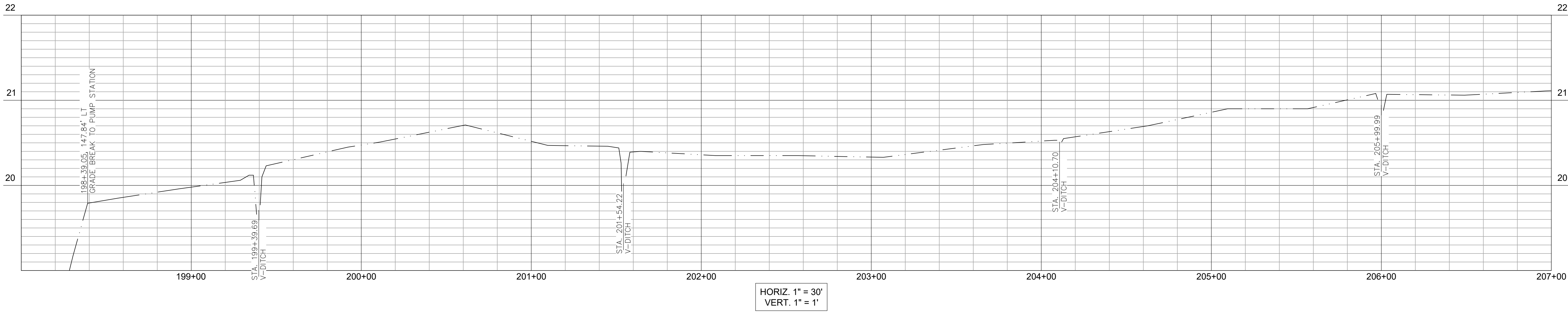
THE CENTERLINE ALIGNMENT SHOWN HEREON WAS ESTABLISHED BY HOLDING A RECORD DISTANCE OF 41.5' E'LY OF AND PARALLEL WITH LINE ESTABLISHMENT NOTE ② AS SHOWN ON EXISTING PROJECT TITLED ROSSMOOR RETARDING BASIN B02 & LOS ALAMITOS CHANNEL, PID 1920PW-IN0015, SIGNED APRIL 20, 2021.

SHEET INDEX

SHEET NO.	DESCRIPTION
SHEET #1	TITLE SHEET
SHEET #2	PROFILES

COUNTY OF ORANGE OC PUBLIC WORKS/ENGINEERING SERVICES OC SURVEY/FIELD SERVICES/BOUNDARY ANALYSIS & MAPPING			
ROSSMOOR RETARDING BASIN B01 & LOS ALAMITOS CHANNEL CO2			
TITLE SHEET			
LOCATION: THE W'LY SIDE OF THE ROSSMOOR RETARDING BASE FROM STA. 198+00 TO STA. 223+50			
DATE OF SURVEY: FEBRUARY, 2019		BY: J. RUSSO AND PARTY	
TOPOGRAPHIC MAPPING		BY: J. PEDRETTI	
OFFICE CHECK		BY: M. LAFONTAINE, PLS.	
FIELD CHECK		BY: J. RUSSO AND PARTY	
SCALE: N.T.S.		W.O.# EF21451	
FILE: ROSSMOOR RETARDING BASIN TOPO.DWG		PID 1920PW-IN0015	
MARK	DATE	ITEM	SHEET NO.
REVISIONS			1 of 2

TOPOGRAPHIC MAPPING PROJECT



BASIS OF STATIONING

THE BASIS OF STATIONING SHOWN HEREON WAS DERIVED BY HOLDING A STATION OF 154+52.36 (PER R3) AT THE INTERSECTION OF LINE ESTABLISHMENT NOTE ① AND THE CENTERLINE OF THE LOS ALAMITOS CHANNEL (R3) AND INCREASING N'ELY AS SHOWN. SEE EXISTING PROJECT TITLED ROSSMOOR RETARDING BASIN B02 & LOS ALAMITOS CHANNEL, PID 1920PW-IN0015, SIGNED APRIL 20, 2021.

ALIGNMENT ESTABLISHMENT

THE CENTERLINE ALIGNMENT SHOWN HEREON WAS ESTABLISHED BY HOLDING A RECORD DISTANCE OF 41.5' E'LY OF AND PARALLEL WITH LINE ESTABLISHMENT NOTE ②. SEE EXISTING PROJECT TITLED ROSSMOOR RETARDING BASIN B02 & LOS ALAMITOS CHANNEL, PID 1920PW-IN0015, SIGNED APRIL 20, 2021.

NOTES:

STATIONING ON PROFILE BASED ON ALIGNMENT PROVIDED IN SURVEY FOR ROSSMOOR RETARDING BASIN B02 & LOS ALAMITOS CHANNEL, PID 1920PW-IN0015, SIGNED APRIL 20, 2021.

				COUNTY OF ORANGE OC PUBLIC WORKS/ENGINEERING SERVICES OC SURVEY/FIELD SERVICES/BOUNDARY ANALYSIS & MAPPING	
				ROSSMOOR RETARDING BASIN B01 & LOS ALAMITOS CHANNEL CO2	
				LOCATION: THE W'LY SIDE OF THE ROSSMOOR RETARDING BASE FROM STA. 198+00 TO STA. 223+50	
		DATE OF SURVEY: FEBRUARY, 2019		BY: J.RUSSO AND PARTY	SHEET NO. 2 of 2
		TOPOGRAPHIC MAPPING		BY: J. PEDRETTI	
		OFFICE CHECK		BY: M. LAFONTAINE, PLS	
		FIELD CHECK		BY: J.RUSSO AND PARTY	
		SCALE: 1" = 30'		W.O.# EF21451	
		FILE:ROSSMOOR RETARDING BASIN TOPO.DWG		PID 1920PW-IN0015	
MARK	DATE	ITEM			
REVISIONS					