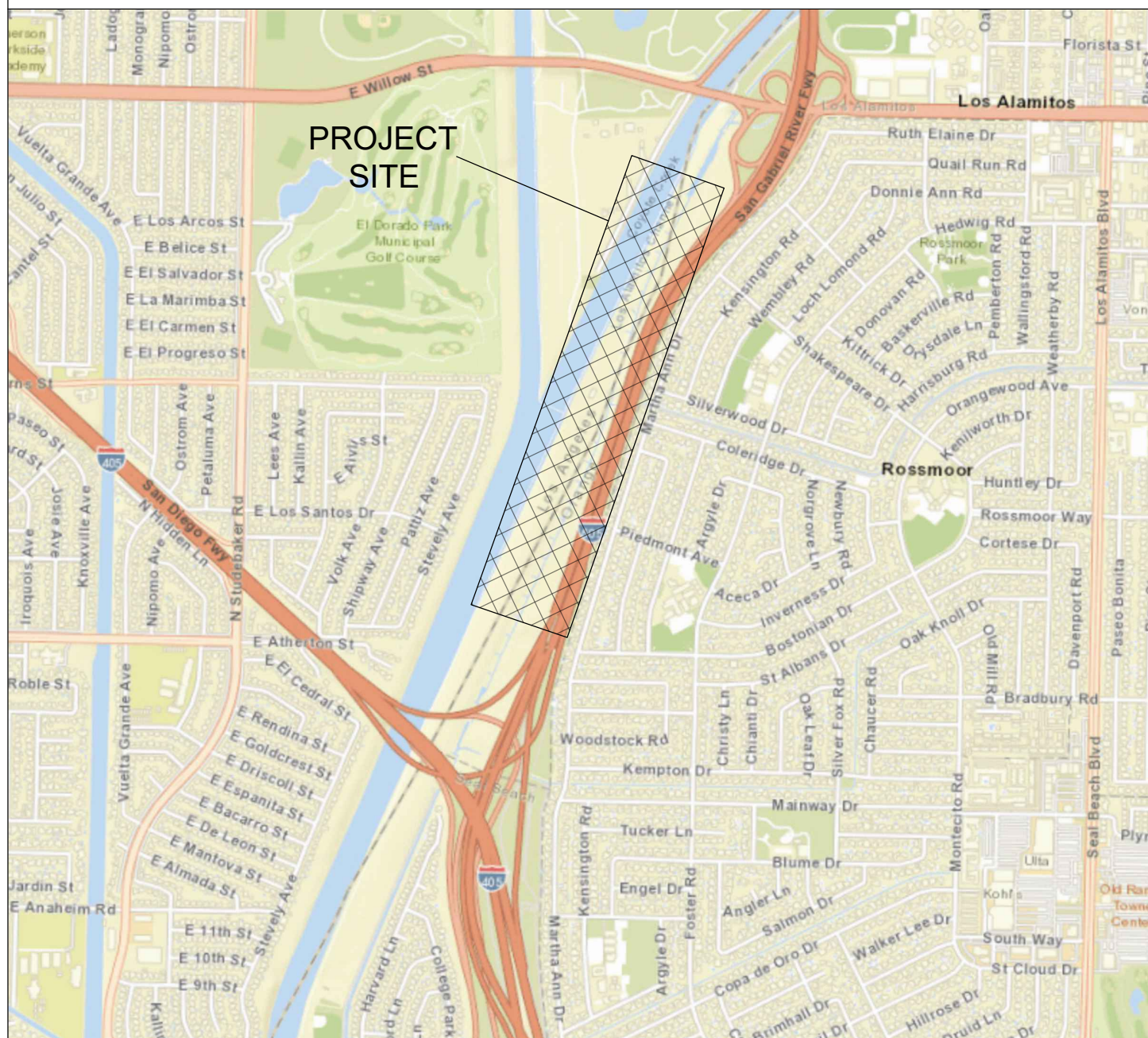




OC PUBLIC WORKS DEPARTMENT  
JAMES TREADAWAY DIRECTOR  
KEVIN HILLS, COUNTY SURVEYOR  
ROSSMOOR RETARDING BASIN B02  
& LOS ALAMITOS CHANNEL C01



LOCATION MAP



SENIOR LAND SURVEYOR'S CERTIFICATE:

THIS MAP CORRECTLY REPRESENTS A SURVEY MADE BY ME OR UNDER MY DIRECTION IN CONFORMANCE WITH REQUIREMENTS OF THE PROFESSIONAL LAND SURVEYORS' ACT; THIS 3 DAY OF JULY, 2023.

MICHAEL KUBISTY, PLS. SENIOR LAND SURVEYOR



SENIOR LAND SURVEYOR'S CERTIFICATE:

THIS MAP CORRECTLY REPRESENTS A SURVEY MADE BY ME OR UNDER MY DIRECTION IN CONFORMANCE WITH REQUIREMENTS OF THE PROFESSIONAL LAND SURVEYORS' ACT; THIS 3 DAY OF JULY, 2023.

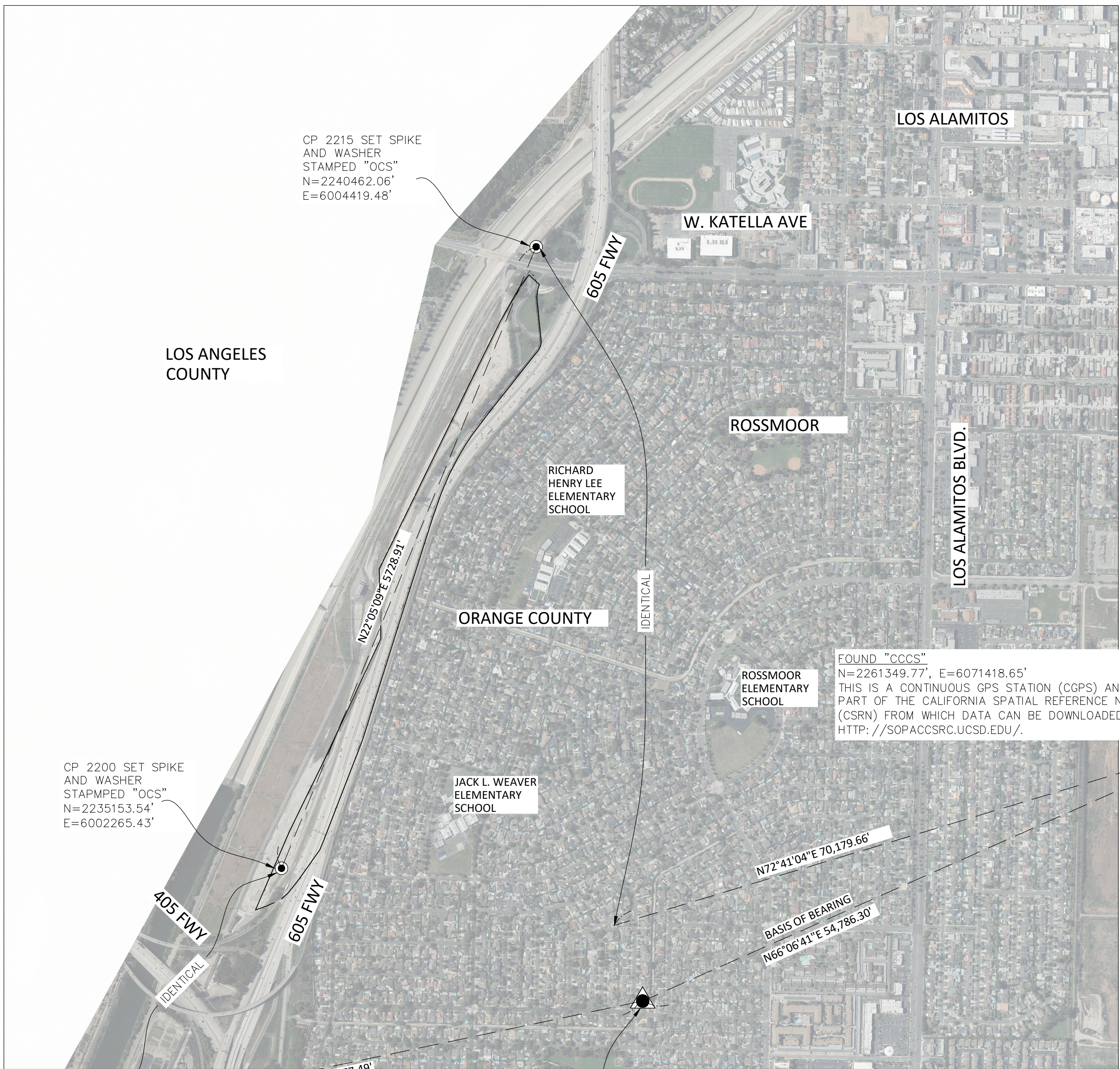
JESOM MORENO, PLS. SENIOR LAND SURVEYOR



U.S. Survey Foot

OC Public Works/Engineering Services  
OC Survey/Field Services  
Boundary Analysis & Mapping

N.T.S.



BASIS OF BEARINGS

THE BASIS OF BEARINGS FOR THIS SURVEY IS BASED ON THE CALIFORNIA COORDINATE SYSTEM (CCS83), ZONE VI, NAD 83, OCS (2007.00) EPOCH ADJUSTMENT, AS DETERMINED LOCALLY BY A LINE BETWEEN CONTINUOUS GLOBAL POSITIONING STATIONS CGPS STATIONS (BLSA) AND (CCCS) BEING NORTH 66°06'41" EAST AS DERIVED FROM THE COORDINATES PUBLISHED BY THE CALIFORNIA SPATIAL REFERENCE CENTER (CSRC) ALONG WITH DATA SHEETS ON FILE IN THE OFFICE OF THE ORANGE COUNTY SURVEYOR.

HORIZONTAL DATUM

COORDINATES SHOWN ARE BASED ON THE CALIFORNIA COORDINATE SYSTEM (CCS83), ZONE VI, NAD 83, OCS (2007.00) EPOCH ADJUSTMENT.  
ALL DISTANCES SHOWN ARE GRID, UNLESS OTHERWISE NOTED. TO OBTAIN GROUND DISTANCES MULTIPLY GRID BY A COMBINED FACTOR OF 1.00001940  
THIS COMBINATION FACTOR WAS HELD AT POINT #800  
N: 2234052.512 E: 6003222.180  
ALL DISTANCES ARE BASED ON THE U.S. SURVEY FOOT.

VERTICAL DATUM

O.C.S. BM. CC-6 ELEV.=39.823' YEAR LEVELED 2005  
NAVD88 (O.C.S. 2005 ADJUSTMENT)  
DESCRIBED BY OCS 2002 - 3 3/4" US ARMY CORPS OF ENGINEERS BRONZE DISK STAMPED "CC6 1957", SET IN THE EASTERLY END OF A CONCRETE BRIDGE. MONUMENT IS LOCATED IN THE EASTERLY PORTION OF THE INTERSECTION OF CERRITOS AVENUE AND THE COYOTE CREEK OVERCROSSING, 1.0 FT. SOUTHERLY OF THE CENTERLINE OF CERRITOS AVENUE AND 120 FT. EASTERLY OF THE CENTERLINE OF THE COYOTE CREEK CHANNEL. MONUMENT IS SET 1.0 FT. ABOVE THE ROAD.

NOTES

THE SURVEY INFORMATION SHOWN HEREON IS TO BE USED FOR TOPOGRAPHIC RELATIONSHIPS ONLY AND IS NOT INTENDED FOR LAND ACQUISITION OR BOUNDARY PURPOSES.

SHEET INDEX

SHEET NO.	DESCRIPTION
SHEET #1	TITLE SHEET
SHEET #2-6	BOUNDARY MAP
SHEET #7	ALIGNMENT SHEET
SHEET #8-17	TOPOGRAPHIC MAP

<div><div>△</div><div>7/3/23</div></div> <div>FIXED TYPO WITH A DIMENSION OF PAGE 7 AND VARIOUS TYPOS ON THE TITLE SHEET</div>		COUNTY OF ORANGE OC PUBLIC WORKS/ENGINEERING SERVICES OC SURVEY/FIELD SERVICES/BOUNDARY ANALYSIS & MAPPING				
		ROSSMOOR RETARDING BASIN B01 & LOS ALAMITOS CHANNEL C02				
		TITLE SHEET				
		LOCATION: ALONG SAN GABRIEL RIVER FREEWAY (605) BETWEEN SAN DIEGO FREEWAY (405) AND KATELLA AVENUE				
		DATE OF SURVEY: FEBRUARY, 2019		BY: JRUSO AND PARTY		SHEET NO.  1 of 17
		TOPOGRAPHIC MAPPING		BY: R. BELTRAN		
OFFICE CHECK		BY: M. LAFONTAINE, PLS				
FIELD CHECK		BY: JRUSO AND PARTY				
MARK	DATE	ITEM	SCALE: N.T.S.	W.O.# EF21451	PID 1920PW-IN0015	
REVISIONS			FILE:ROSSMOOR RETARDING BASIN TOPO.DWG			

TOPOGRAPHIC MAPPING PROJECT



ESTABLISHMENT NOTES

- Ⓐ ESTABLISHED THE CENTERLINE OF KATELLA AVENUE, HOLDING A LINE BETWEEN MONUMENT NOTE 1 AND ESTABLISHMENT NOTE Ⓔ.
- Ⓑ ESTABLISHED ANGLE POINT IN THE CENTERLINE OF KATELLA AVENUE HOLDING A RECORD DISTANCE PER (R1) E'LY FROM MONUMENT NOTE 1 ALONG THE E'LY PROLONGATION OF LINE ESTABLISHMENT NOTE Ⓐ.
- Ⓒ ESTABLISHED CENTERLINE OF RUTH ELAINE DRIVE HOLDING A LINE BETWEEN MONUMENT NOTES 5 AND 6 PER (R1).
- Ⓓ ESTABLISHED THE CENTERLINE OF KATELLA AVENUE HOLDING A LINE BETWEEN ESTABLISHMENT NOTE Ⓑ AND MONUMENT NOTE 7 PARALLEL WITH ESTABLISHMENT NOTE Ⓒ PER (R1).
- Ⓔ ESTABLISHED THE CENTERLINE OF LOS ALAMITOS BOULEVARD HOLDING A LINE BETWEEN MONUMENTS 7 AND 8 PER (R1).
- Ⓕ ESTABLISHED THE CENTERLINE OF LOS ALAMITOS BOULEVARD HOLDING A LINE BETWEEN MONUMENT NOTES 8 AND 9 PER (R1).
- Ⓖ ESTABLISHED THE CENTERLINE OF LOS ALAMITOS BOULEVARD HOLDING A LINE BETWEEN MONUMENT NOTES 9 AND 11 .
- Ⓗ ESTABLISHED THE CENTERLINE OF MAINWAY DRIVE HOLDING A LINE BETWEEN MONUMENT NOTES 17 AND 18 PER (R20)(R21)(R22).
- Ⓘ ESTABLISHED THE SOUTH LINE OF NORTH 1/2, NORTH 1/2 OF SECTIONS 31 AND 36, T4S R11 AND R12W BY HOLDING A LINE ESTABLISHMENT NOTES Ⓔ AND Ⓐ.
- Ⓢ ESTABLISHED CENTERLINE OF STUDEBAKER ROAD HOLDING A LINE BETWEEN MONUMENT NOTES 22 AND 26 PER (R1).
- Ⓚ ESTABLISHED CENTERLINE OF STUDEBAKER ROAD HOLDING A LINE BETWEEN MONUMENT NOTES 1 AND 26 PER (R1).
- Ⓛ ESTABLISHED PORTION OF ORANGE COUNTY LINE HOLDING A LINE BETWEEN MONUMENT NOTE 27 AND ESTABLISHMENT NOTE Ⓐ PER (R1).
- Ⓜ ESTABLISHED PORTION OF ORANGE COUNTY LINE BY HOLDING A RECORD ANGLE PER (R1) AT MONUMENT NOTE 27 FROM LINE ESTABLISHMENT NOTE 1.
- Ⓝ ESTABLISHED PORTION OF ORANGE COUNTY LINE BY HOLDING A LINE BETWEEN MONUMENT 20 AND ESTABLISHMENT Ⓔ PER (R1).
- Ⓞ ESTABLISHED CENTERLINE OF STERNS STREET HOLDING A LINE BETWEEN MONUMENT NOTES 23 AND 25 PER (R1).
- Ⓔ ESTABLISHED S'LY LINE OF TRACT 10548 MRLA 174/15-23 AND THE N'LY LINE OF THE SW 1/4 OF SECTION 25 T4S R12W HOLDING A RECORD DISTANCE PER (R1) E'LY FROM MONUMENT NOTE 26 PARALLEL WITH ESTABLISHMENT NOTE Ⓞ.
- Ⓞ ESTABLISHED INTERSECTION OF THE SOUTH LINE OF THE NORTH 1/2, NORTH 1/2 OF SECTION 36 T4S R12W SBBM AND THE COUNTY LINE BY HOLDING ESTABLISHMENT NOTES 1 & Ⓞ. FITS RECORD DIMENSIONS FROM OFFSET MONUMENT NOTE 19 PER (R1) SEE DETAIL B ON SHEET 6.
- Ⓔ ESTABLISHED ANGLE POINT ON SOUTH LINE OF TRACT 10548 MRLA 174/15-23 HOLDING RECORD DISTANCE OF 2640.50' PER (R1) E'LY FROM MONUMENT NOTE 26 PARALLEL WITH AND N'LY OF ESTABLISHMENT NOTE Ⓞ.
- Ⓢ ESTABLISHED N'LY LINE OF THE SE 1/4 OF SECTION 25 AND THE SW 1/4 OF SECTION 30 T4S R11 AND R12W BETWEEN MONUMENT NOTES 8 AND ESTABLISHMENT NOTE Ⓔ PER (R1)
- 1 ESTABLISHED E'LY 1/4 CORNER OF SECTION 25 BY HOLDING A RECORD DISTANCE OF 3022.23' W'LY FROM MONUMENT NOTE 8 ALONG ESTABLISHMENT NOTE Ⓢ PER (R1).
- Ⓢ ESTABLISHED ANGLE POINT IN COUNTY LINE BY THE SE'LY PROLONGATION OF LINE ESTABLISHMENT NOTE Ⓜ AND INTERSECTING WITH THE NE'LY PROLONGATION OF LINE ESTABLISHMENT NOTE Ⓔ.
- Ⓢ ESTABLISHED THE INTERSECTION BETWEEN THE W'LY LINE OF LOT 58 PER (R5) AND THE CENTERLINE OF KATELLA AVENUE HOLDING A RECORD DISTANCE PER (R1) SE'LY FROM MONUMENT NOTE 1 ALONG LINE ESTABLISHMENT Ⓐ.
- Ⓢ ESTABLISHED THE INTERSECTION BETWEEN THE W'LY RIGHT OF WAY OF SAN GABRIEL RIVER DESCRIBED IN (R12) AND THE CENTERLINE OF KATELLA AVE. BY HOLDING A RECORD DISTANCE PER (R1) SE'LY FROM ESTABLISHMENT Ⓢ ALONG LINE ESTABLISHMENT Ⓐ.
- Ⓢ ESTABLISHED THE INTERSECTION BETWEEN THE E'LY RIGHT OF WAY OF SAN GABRIEL RIVER DESCRIBED IN (R12) AND THE CENTERLINE OF KATELLA AVE. BY HOLDING A RECORD DISTANCE PER (R1) SE'LY FROM ESTABLISHMENT Ⓢ ALONG LINE ESTABLISHMENT Ⓐ.
- Ⓢ ESTABLISHED THE INTERSECTION BETWEEN THE E'LY LINE OF SOUTHERN CALIFORNIA EDISON CO. EASEMENT DESCRIBED IN (R11) AND THE CENTERLINE OF KATELLA AVE. BY HOLDING A RECORD DISTANCE PER (R1) SE'LY FROM ESTABLISHMENT Ⓢ ALONG LINE ESTABLISHMENT Ⓐ.
- 2 ESTABLISHED THE SW'LY CORNER OF THE LOS ALAMITOS CHANNEL (R10) BY HOLDING RECORD ANGLES, DISTANCES, AND CURVATURE INFORMATION PER (R10) S'LY FROM MONUMENT 2 AND INTERSECTING LINE ESTABLISHMENT NOTE 1 FITS RECORD DIST OF 283.06'(GROUND) PER (R1) E'LY FROM ESTABLISHMENT NOTE Ⓞ.

- Ⓐ ESTABLISHED BY HOLDING PARALLEL AND CONCENTRIC TO THE W'LY RIGHT OF WAY OF ALAMITOS CHANNEL PER (R1).
- Ⓐ ESTABLISHED THE NE CORNER OF LOS ALAMITOS CHANNEL (R10) HOLDING RECORD ANGLES, DISTANCES AND CURVATURE INFORMATION PER (R10) NE'LY FROM ESTABLISHMENT NOTE Ⓐ AND INTERSECTING LINE ESTABLISHMENT NOTE Ⓐ FITS RECORD DISTANCE PER (R1) E'LY FROM MONUMENT NOTE 2 .
- Ⓐ ESTABLISHED THE SE'LY CORNER AND P.O.B. OF THE LOS ALAMITOS CHANNEL AS DESCRIBED IN (R10) BY HOLDING A LINE 75' S'ELY OF LINE ESTABLISHMENT NOTE Ⓔ AND INTERSECTING LINE ESTABLISHMENT NOTE 1.
- Ⓐ ESTABLISHED BY HOLDING RECORD ANGLES, DISTANCES, AND CURVATURE INFORMATION BETWEEN ESTABLISHMENT NOTE Ⓐ AND MONUMENT NOTE 28 PER (R1).
- Ⓐ ESTABLISHED BY LEAST SQUARES ADJUSTMENT BETWEEN FOUND MONUMENTS 28 AND 33 PER (R8).
- Ⓐ ESTABLISHED BY LEAST SQUARES ADJUSTMENT BETWEEN FOUND MONUMENTS 33 AND 36 PER (R8).
- Ⓐ ESTABLISHED BY LEAST SQUARES ADJUSTMENT BETWEEN FOUND MONUMENTS 36 AND 37 PER (R8).
- Ⓐ ESTABLISHED BY LEAST SQUARES ADJUSTMENT BETWEEN FOUND MONUMENTS 37 AND 30 PER (R8).
- Ⓐ ESTABLISHED BY LEAST SQUARES ADJUSTMENT BETWEEN FOUND MONUMENTS 30 AND 38 PER (R8).
- Ⓐ ESTABLISHED BY LEAST SQUARES ADJUSTMENT BETWEEN FOUND MONUMENTS 38 AND 39 PER (R8).
- Ⓐ ESTABLISHED BY LEAST SQUARES ADJUSTMENT BETWEEN FOUND MONUMENTS 39 AND 40 PER (R8).
- Ⓐ SEARCHED FOUND NOTHING ESTABLISHED BY HOLDING RECORD ANGLES AND DISTANCES FROM FOUND MONUMENT 40 PER (R8)
- Ⓐ SEARCHED FOUND NOTHING ESTABLISHED BY HOLDING RECORD ANGLES AND DISTANCES FROM ESTABLISHMENT Ⓐ PER (R8).
- Ⓐ SEARCHED FOUND NOTHING ESTABLISHED BY HOLDING RECORD RADIUS FROM ESTABLISHMENT Ⓐ AND INTERSECTING ESTABLISHMENT Ⓐ PER (R8).
- Ⓐ ESTABLISHED THE SW'LY CORNER OF LOT 58 PER (R34) BY HOLDING RECORD ANGLES, DISTANCES, AND CURVATURE INFORMATION PER (R1) S'LY FROM ESTABLISHMENT NOTE Ⓢ AND INTERSECTING ESTABLISHMENT NOTE Ⓔ.

- Ⓐ ESTABLISHED THE SW'LY CORNER OF (R27) BY HOLDING RECORD ANGLES, DISTANCES, AND CURVATURE INFORMATION PER (R1) S'LY FROM ESTABLISHMENT NOTE Ⓢ AND INTERSECTING ESTABLISHMENT NOTE Ⓔ.
- Ⓐ ESTABLISHED THE SE'LY CORNER OF (R27) BY HOLDING RECORD ANGLES, DISTANCES, AND CURVATURE INFORMATION PER (R1) S'LY FROM ESTABLISHMENT Ⓢ AND INTERSECTING LINE ESTABLISHMENT NOTE Ⓔ SEE DETAIL B ON SHEET 6.

- Ⓐ ESTABLISHED THE E'LY LINE OF THE SAN GABRIEL RIVER (R12) AND (R27) S'LY FROM ESTABLISHMENT NOTE Ⓢ HOLDING RECORD ANGLES, DISTANCES AND CURVATURE INFORMATION PER (R1) BETWEEN ESTABLISHMENT NOTE Ⓢ AND OFFSET MONUMENT 41 .
- Ⓐ ESTABLISHED THE W'LY LINE OF LOT 58 OF MRLA 174/15-23 S'LY FROM ESTABLISHMENT NOTE Ⓢ HOLDING RECORD ANGLES DISTANCES, AND CURVATURE INFORMATION PER (R1) BETWEEN ESTABLISHMENT NOTES Ⓢ AND Ⓐ.
- Ⓐ ESTABLISHED THE E'LY LINE OF LOT 58 OF MRLA 174/15-23 S'LY FROM ESTABLISHMENT NOTE Ⓢ HOLDING RECORD ANGLES, DISTANCES, AND CURVATURE INFORMATION PER (R1) BETWEEN ESTABLISHMENT NOTES Ⓢ AND Ⓐ.
- Ⓐ ESTABLISHED THE E'LY LINE OF (R11) S'LY FROM ESTABLISHMENT NOTE Ⓢ PARALLEL WITH AND A RECORD DISTANCE OF 300' PER (R2) E'LY OF LINE ESTABLISHMENT NOTE Ⓐ.
- Ⓐ ESTABLISHED THE E'LY LINE OF LOS ALAMITOS CHANNEL (R10) HOLDING RECORD ANGLES, DISTANCES, AND CURVATURE INFORMATION PER (R10) N'ELY FROM ESTABLISHMENT NOTE Ⓐ TO IT'S INTERSECTION WITH LINE ESTABLISHMENT NOTE Ⓐ.
- Ⓐ ESTABLISHED THE INTERSECTION OF COUNTY LINE AND THE CENTERLINE OF KATELLA AVENUE BY HOLDING A RECORD DISTANCE OF 225.31' PER (R1) W'LY FROM MONUMENT NOTE 2 ALONG ESTABLISHMENT NOTE Ⓐ.
- Ⓐ ESTABLISHED BY INTERSECTION HOLDING LINE ESTABLISHMENT NOTES Ⓐ AND Ⓔ. ALSO BEING THE TRUE POINT OF BEGINNING OF (R37).

- Ⓐ ESTABLISHED THE S'ELY LINE OF COYOTE CREEK CHANNEL (R9) BY HOLDING RECORD ANGLE S'WLY AT MONUMENT NOTE 30 FROM LINE ESTABLISHMENT NOTE Ⓔ.
- Ⓐ ESTABLISHED BY THE PROLONGING LINE ESTABLISHMENT NOTE Ⓔ AND INTERSECTING LINE ESTABLISHMENT NOTE Ⓐ.
- Ⓐ ESTABLISHED BY HOLDING A LINE BETWEEN MONUMENT NOTES 32 AND 33 .
- Ⓐ ESTABLISHED W'LY LINE OF LOS ALAMITOS CHANNEL (R10) HOLDING RECORD ANGLES, DISTANCES AND CURVATURE INFORMATION S'WLY FROM MONUMENT NOTE 2 INTERSECTING LINE ESTABLISHMENT NOTE 1.
- Ⓐ ESTABLISHED BY HOLDING A LINE BETWEEN ESTABLISHMENT NOTES Ⓐ AND Ⓔ.
- Ⓐ ESTABLISHED BY HOLDING A LINE BETWEEN ESTABLISHMENT NOTES Ⓔ AND 1.
- Ⓐ ESTABLISHED BY HOLDING A LINE A RECORD OFFSET DISTANCE OF 0.04' PER (R1) NW'LY FROM MONUMENT NOTE 19 AND PERPENDICULAR TO MONUMENT NOTE 21.
- Ⓐ ESTABLISHED PORTION OF ORANGE COUNTY LINE BY THE NE'LY PROLONGATION OF LINE ESTABLISHMENT NOTE 1.
- Ⓐ ESTABLISHED 15' OFFSET LINE PER (R28) AND (R29) BETWEEN MONUMENT NOTES 20 AND 41.
- Ⓐ ESTABLISHED BY HOLDING A RECORD OFFSET DISTANCE OF 2.31' PER (R1) ALONG THE NE'LY PROLONGATION OF LINE ESTABLISHMENT NOTE Ⓔ TO ITS INTERSECTION WITH LINE ESTABLISHMENT NOTE 1.
- Ⓐ ESTABLISHED BY INTERSECTING THE W'LY PROLONGATION OF ESTABLISHMENT NOTE 1 AND ESTABLISHMENT NOTE Ⓐ.
- Ⓐ ESTABLISHED P.O.C. DESCRIBED IN (R37) BY INTERSECTING ESTABLISHMENT NOTES Ⓢ AND Ⓐ.
- Ⓐ ESTABLISHED E'LY TERMINUS OF OF FIRST COURSE DESCRIBED IN (R37) BY INTERSECTING ESTABLISHMENT NOTES Ⓢ AND Ⓐ.
- Ⓐ ESTABLISHED S'LY CORNER OF (R37) BY INTERSECTING LINE ESTABLISHMENT NOTES Ⓔ AND Ⓐ.
- Ⓐ ESTABLISHED E'LY CORNER OF (R37) BY INTERSECTING LINE ESTABLISHMENT NOTES Ⓔ AND Ⓐ.
- Ⓐ ESTABLISHED NE'LY CORNER OF (R37) BY INTERSECTING LINE ESTABLISHMENT NOTES Ⓢ AND Ⓐ.
- Ⓐ ESTABLISHED NE'LY CORNER OF (R37) BY INTERSECTING LINE ESTABLISHMENT NOTES Ⓢ AND Ⓐ.

REFERENCES

- (R1) = RSB 176/23-31
- (R2) = RSB 286/1-40
- (R3) = RECORD DRAWING AS-BUILT C01-701-1-A
- (R4) = PARCEL MAP 398/1-17
- (R5) = TRACT NO. 10548 MRLA 174/15-23
- (R6) = TRACT NO. 945 M.M. 31/11-12
- (R7) = TRACT NO. 3189 M.M. 96/5-12
- (R8) = BK.13486 PG. 1091 O.R. RECORDS OF ORANGE COUNTY
- (R9) = BK.2859 PG.446 O.R. RECORDS OF LA. COUNTY
- (R10) = BK.4483 PG. 6-7 O.R. RECORDS OF ORANGE COUNTY
- (R11) = BK.2790 PG. 436 O.R. RECORDS OF ORANGE COUNTY
- (R12) = BK.5109 PG. 392 O.R. RECORDS OF L.A. COUNTY
- (R13) = CORNER RECORD, C.R. 2008-0442
- (R14) = CORNER RECORD, C.R. 2000-0366
- (R15) = CORNER RECORD, C.R. 2012-3448
- (R16) = CORNER RECORD, C.R. 2000-0568
- (R17) = CORNER RECORD, C.R. 1998-0345
- (R18) = CORNER RECORD, P.W.F.B. 0325-486 L.A. COUNTY
- (R19) = CORNER RECORD, P.W.F.B. 0326-111 L.A. COUNTY
- (R20) = TRACT NO. 3019 M.M. 119/35-44
- (R21) = TRACT NO. 2572 M.M. 115/20-27
- (R22) = TRACT NO. 3224 M.M. 106/21-29
- (R23) = TRACT NO. 15797 M.M. 817/21-26
- (R24) = CORNER RECORD, C.R. 2007-0924
- (R25) = CORNER RECORD, C.R. 2003-1968
- (R26) = BK.4400 PG. 160 O.R. RECORDS OF ORANGE COUNTY
- (R27) = BK.4865 PG. 275 O.R. RECORDS OF L.A. COUNTY
- (R28) = TRACT NO. 5847 M.M. 211/15-20
- (R29) = L.A.CO.F.C.D. NOTES FC 2955/47-53
- (R30) = BK.7956-394 O.R. RECORDS OF ORANGE COUNTY
- (R31) = O.R. 82-334354 RECORDS OF ORANGE COUNTY
- (R32) = O.R. 82-334353 RECORDS OF ORANGE COUNTY
- (R33) = O.R. 82-189684 RECORDS OF ORANGE COUNTY
- (R34) = BK.3962 PG.202 RECORDS OF L.A. COUNTY
- (R35) = TRACT NO. 17703 MB.466/13-23 RECORDS OF L.A. COUNTY
- (R36) = BK.958 PG. 670 RECORDS OF L.A. COUNTY
- (R37) = O.R. 82-274324 RECORDS OF L.A. COUNTY
- (R38) = TRACT NO. 1680 M.M. 110/37-48
- (R39) = BK. 3126 PG. 285 O.R. L.A. COUNTY

LINE TABLE				LINE TABLE			
LINE #	BEARING	MEASURED DISTANCE	RECORD DISTANCE	LINE #	BEARING	MEASURED DISTANCE	RECORD DISTANCE
L1	N88°45'59"W	2378.53	2378.57' (R1)	L20	N88°48'13"W	1127.46	1127.49' (R1)
L2	N88°45'59"W	100.10	100.10' (R1)	L21	N01°20'34"W	174.70	175.01' (R1)
L3	N88°45'59"W	400.39	440.40' (R1)	L22	N88°46'22"W	3552.00	3552.10' (R20 R21 R22)
L4	N88°45'59"W	300.29	300.30' (R1)	L23	N35°08'16"E	335.09	335.10' (R1)
L5	N88°45'59"W	313.64	NO REF	L24	N26°02'05"E	413.45	413.46' (R1)
L6	N88°45'59"W	225.29	225.31' (R1)	L25	N23°10'18"E	807.80	807.77' (R1)
L7	N88°45'59"W	90.09	90.09' (R1)	L26	N23°10'18"E	15.23	NO REF
L8	N35°29'47"E	122.93	122.91' (R1)	L27	N01°13'36"E	1492.42	1492.46' (R4)
L9	N56°15'07"W	59.20	59.20' (R8)	L28	N01°13'36"E	188.13	188.24' (R23)
L10	N31°52'30"E	49.38	49.38' (R8)	L29	N88°46'22"W	323.40	323.43' (R1)
L11	N05°41'34"W	354.47	354.48' (R8)	L30	N88°46'22"W	283.05	283.06' (R1) 282.20' (R7)
L12	N40°46'09"E	113.82	113.82' (R1)	L31	N88°48'13"W	77.59	NO REF
L13	N88°46'22"W	80.86	80.85' (R1)	L32	N88°48'13"W	50.08	NO REF
L14	N01°20'34"W	4.20	4.20' (R1)	L33	N88°48'13"W	85.09	NO REF
L15	N01°20'34"W	43.87	43.77' (R1)	L34	N88°48'13"W	256.05	NO REF
L16	N88°46'22"W	40.39	40.37' (R1)	L35	N66°10'01"W	106.66	NO REF
L17	N88°46'22"W	16.18	16.17' (R1)	L36	N66°10'01"W	113.47	113.45' (R32)
L18	N88°46'22"W	24.21	24.21' (R1)	L37	N26°02'07"E	144.85	NO REF
L19	N88°46'22"W	107.81	107.81' (R1)	L38	N18°14'50"E	373.79	373.81' (R31)

CURVE TABLE						
CURVE #	DELTA	RADIUS	LENGTH	RECORD DELTA	RECORD RADIUS	RECORD LENGTH
C1	1°41'17"	4699.91'	138.46'	1°41'13"	4700.00'	138.38' (R1)
C2	37°34'04"	249.99'	163.91'	37°34'04"	250.00'	163.92' (R8)
C3	44°03'14"	125.00'	96.11'	44°03'20"	125.00'	96.11' (R8)
C4	20°38'06"	2499.95'	900.35'	20°38'09"	2500.00'	900.41' (R1)
C5	9°58'37"	1962.46'	341.72'	9°58'36"	1962.50'	341.72' (R1)
C6	9°58'37"	2037.46'	354.78'	9°58'36"	2037.50'	354.78' (R1)
C7	1°12'09"	3504.93'	73.56'	01°12'09"	3505.00'	73.56' (R1)
C8	26°41'48"	849.98'	396.05'	26°42'59"	850.00'	396.35' (R8)
C9	2°51'41"	3966.42'	198.09'	2°51'44"	3966.50'	198.15' (R1)
C10	9°27'53"	4699.91'	776.39'	9°27'53"	4700.00'	776.40' (R1)
C11	10°19'53"	4774.91'	861.00'	10°19'52"	4775.00'	860.98' (R1)
C12	6°55'43"	5224.90'	631.82'	6°55'43"	5225.00'	631.83' (R1)
C13	2°00'44"	2564.88'	90.08'	2°00'44"	2564.93'	90.08' (R1)
C14	2°02'02"	2664.88'	94.60'	2°02'02"	2664.93'	94.60' (R1)
C15	2°06'02"	3064.87'	112.36'	2°06'02"	3064.93'	112.37' (R1)
C17	9°58'50"	3474.93'	605.31'	9°58'50"	3475.00'	605.32' (R1)
C18	4°26'24"	4724.91'	366.15'	4°26'30"	4725.00'	366.29' (R1)
C19	5°32'25"	4724.91'	456.88'	5°32'20"	4725.00'	456.77' (R1)
C31	0°03'04"	4774.91'	4.25'	0°02'52"	4775.00'	3.98' (R30)
C33	2°11'54"	4774.91'	183.21'	NO REF	NO REF	NO REF
C34	0°58'41"	4774.91'	81.50'	0°58'37"	4775.00'	81.42' (R32)
C35	0°37'53"	4699.91'	51.80'	0°36'34"	4700.00'	50.00' (R32)
C36	21°58'51"	55.00'	21.10'	21°59'04"	55.00'	21.10' (R31)
C37	23°41'26"	195.00'	80.63'	21°59'04"	55.00'	21.10' (R31)
C38	9°58'37"	1942.46'	338.24'	9°59'45"	1942.50'	338.90' (R31)
C39	2°10'36"	3520.58'	133.75'	2°11'36"	3495.00'	133.79' (R31)

			COUNTY OF ORANGE OC PUBLIC WORKS/ENGINEERING SERVICES OC SURVEY/FIELD SERVICES/BOUNDARY ANALYSIS & MAPPING			
			ROSSMOOR RETARDING BASIN B02 & LOS ALAMITOS CHANNEL C01			
			BOUNDARY MAP			
			PROJECT LIMITS: ALONG SAN GABRIEL RIVER FREEWAY (605) BETWEEN SAN DIEGO FREEWAY AND (405) AND KATELLA AVENUE			
			DATE OF SURVEY: OCTOBER, 2020	BY: J. RUSSO AND PARTY	SHEET NO.  2 of 17	
			MAPPING	BY: R. BELTRAN		
			OFFICE CHECK	BY: M. KUBISTY, PLS		
			FIELD CHECK	BY: J. RUSSO AND PARTY		
MARK	DATE	ITEM	SCALE: NO SCALE	W.O. #EF21451	FILE #1920PW-IN0015	
			REVISIONS			
			FILE: ROSSMOOR_RETARDING_BASIN_BOUNDARY_2020.DWG			

MONUMENT NOTES

- 1

FOUND WELL MON WITH 2" BRASS CAP STAMPED COUNTY SURVEYOR, T.4S/R.12W SECTIONS 23,24,25,26" PER (R1), DN. 1.0" IN AC. ACCEPTED AS THE CENTERLINE INTERSECTION OF WILLOW AVENUE AND STUDEBAKER ROAD.

2

FOUND 2 IN IP WITH TAG STAMPED "OCS" PER (R1) DN. 0.4' IN AC. ACCEPTED AS THE INTERSECTION OF THE W'LY LINE OF (R10) AND LINE ESTABLISHMENT

3

FOUND SPIKE AND WASHER PER OCS HORIZONTAL CONTROL DATA SHEET, FLUSH IN AC. ACCEPTED AS THE OCS GPS POINT #3739 AND TIE TO THE N'LY PROLONGATION OF THE W'LY COURSE OF (R10) PER (R2).

4

FOUND GEAR SPIKE AND WASHER STAMPED "LS. 5778" PER (R13), FLUSH IN AC. S01°14'01"W 0.17' FROM POINT ON CENTERLINE OF LINE ESTABLISHMENT

5

FOUND PUNCHED SPIKE AND WASHER STAMPED "OCS" FLUSH IN AC. PER R1. ACCEPTED AS CENTERLINE INTERSECTION OF RUTH ELAINE DRIVE AND DONNIS ROAD PER (R1).

6

FOUND PUNCHED SPIKE AND WASHER STAMPED "OCS" FLUSH IN AC. PER R1. ACCEPTED AS CENTERLINE INTERSECTION OF RUTH ELAINE DRIVE AND WALLINGSFORD ROAD PER (R1).

7

FOUND HEX BAR IN WELL MON. PER (R1) DN. 1.4 FEET. ACCEPTED AS CENTERLINE INTERSECTION OF LOS ALAMITOS BOULEVARD AND KATELLA AVENUE PER (R1).

8

FOUND SPIKE NO WASHER PER (R1) DN. 0.15' IN AC. ACCEPTED AS CENTERLINE INTERSECTION OF LOS ALAMITOS BOULEVARD AND ORANGE WOOD AVENUE PER (R1).

9

FOUND 2 IN BRASS CAP STAMPED "OCS T.4S/R11W SECTIONS 30,31" PER (R1), AND (R14) DN. 1.2' IN WELL MONUMENT, ACCEPTED AS S'LY 1/4 CORNER OF SECTION 30.

10

FOUND MAG SPIKE AND WASHER STAMPED "LS 6970" PER (R24) N88°46'24"W 0.09' FROM CENTERLINE OF SEAL BEACH BOULEVARD.

11

FOUND GEAR SPIKE AND WASHER STAMPED "LS 6970" PER (R25) ACCEPTED AS POINT ON CENTERLINE OF SEAL BEACH BOULEVARD.

12

SEARCHED FOUND NOTHING. ESTABLISHED BY TIES PER (R15) S88°10'18"W 0.08' FROM THE CENTERLINE OF LOS ALAMITOS BOULEVARD. ESTABLISHED HOLDING RECORD DISTANCE PER (R1) S'LY FROM MONUMENT NOTE 9 ALONG LINE ESTABLISHMENT NOTE 6

13

FOUND LEAD, NAIL AND TAG STAMPED "LS 6704" PER (R15) ACCEPTED AS TIE PER (R15)

14

FOUND LEAD IN LIEU OF LEAD AND TAG STAMPED "LS 6704" PER (R15) ACCEPTED AS TIE PER (R15)

15

FOUND HOLE IN LIEU OF LEAD AND TAG STAMPED "LS 6704" PER (R15) ACCEPTED AS TIE PER (R15)

16

FOUND LEAD IN LIEU OF LEAD, NAIL AND TAG STAMPED "LS 6704" PER (R15) ACCEPTED AS TIE PER (R15)

17

FOUND SPIKE AND OCS WASHER PER (R16) DN. 0.2' IN AC ACCEPTED AS POINT ON CENTERLINE OF MAINWAY DRIVE.

18

FOUND SPIKE IN LIEU OF SPIKE AND TIN PER (R20) DN. 0.45' IN AC, ACCEPTED AS POINT ON CENTERLINE OF MAINWAY DRIVE.

19

FOUND 2 IN IP WITH CONCRETE PLUG AND NAIL PER (R1) DN. 2.5 FEET. ACCEPTED AS OFFSET MONUMENT PER (R1) SEE SHEET 6 DETAIL B.

20

FOUND 4 IN BRASS LA COUNTY FLOOD CONTROL DISK STAMPED "73 RW 18 1964" PER R1 DN. 1.8 ACCEPTED AS POINT ON 15 FOOT OFFSET LINE PER (R1) TO THE EASTERLY BOUNDARY OF SAN GABRIEL RIVER (R27) SEE SHEET 6 DETAIL B.

21

FOUND 2 IN BRASS COUNTY ENGINEER RE 5869 DISK STAMPED "LA CO/O CO STA #6" PER (R1) DN. 1.8 FEET. ACCEPTED AS POINT ON ORANGE COUNTY LOS ANGELES COUNTY BOUNDARY PER (R1).

22

FOUND 2 IN BRASS CAP STAMPED "CLB RCE 9675 1975" W'LY 1/4 CORNER PER (R1) ACCEPTED AS CENTERLINE INTERSECTION OF STUDEBAKER ROAD AND ATHERTON STREET.

23

FOUND 5 IN BRASS LA COUNTY SURVEY CONTROL SYSTEM CAP TRAVERSE STATION 1954 IN WELL PER (R1) DN. 1.8 FEET. N88°48'51"W 0.04' FROM INTERSECTION OF STUDEBAKER ROAD AND STERNS STREET.

24

FOUND GEAR SPIKE AND WASHER STAMPED "LS 5411" PER (R18) FLUSH IN A.C. ACCEPTED AS POINT ON CENTERLINE OF STERNS STREET.

25

FOUND GEAR SPIKE AND WASHER STAMPED "LS 5411" FLUSH IN AC PER (R19) ACCEPTED AS POINT ON CENTERLINE OF STERNS STREET.

26

FOUND 2 IN BRASS CAP PER (R1) ILLEGIBLE, DN. 1.2' FROM A.C. IN WELL MONUMENT, ACCEPTED AS W'LY 1/4 CORNER OF SECTION 25.

27

FOUND LEAD, NAIL AND TAG STAMPED " LA COUNTY D.P.W." PER (R1) FLUSH IN CONC. ACCEPTED AS ANGLE POINT IN COUNTY LINE.

28

FOUND 2 IN IP WITH BRASS TAG STAMPED "ORANGE COUNTY SURVEYOR" PER (R1) DN. 0.5' IN A.C. ACCEPTED AS ANGLE POINT IN N'LY LINE OF (R8).

29

FOUND 2 IN IP AND BRASS TAG STAMPED "ORANGE COUNTY SURVEYOR" PER (R1) FLUSH IN DIRT N63°58'14"W 0.07' FROM EC OF W'LY LINE OF (R10).

30

FOUND 2 IN IP AND BRASS TAG STAMPED "ORANGE COUNTY SURVEY" PER (R1) DN. 1.60' IN A.C. ACCEPTED AS EC OF E'LY LINE OF (R8).

31

FOUND 2 IN IP AND BRASS TAG STAMPED "ORANGE COUNTY SURVEYOR" PER (R1) DN. 0.2' IN DIRT ACCEPTED AS EC OF W'LY LINE OF (R10).

32

FOUND 2 IN IP AND BRASS TAG STAMPED "ORANGE COUNTY SURVEYOR" PER (R1) DN. 0.1' IN DIRT ACCEPTED AS ANGLE POINT OF W'LY LINE OF (R10).

33

FOUND 2 IN IP AND BRASS TAG STAMPED "ORANGE COUNTY SURVEYOR" PER (R1) DN. 0.5' IN DIRT ACCEPTED AS ANGLE POINT OF W'LY LINE OF (R10).

34

FOUND 2 IN IP AND BRASS TAG STAMPED "ORANGE COUNTY SURVEYOR" PER (R1) DN. 0.4' IN DIRT ACCEPTED AS ANGLE POINT OF W'LY LINE OF (R10).

35

FOUND 2 IN IP AND BRASS TAG STAMPED "ORANGE COUNTY SURVEYOR" PER (R1) DN. 0.5' IN DIRT ACCEPTED AS ANGLE POINT OF N'LY LINE OF (R8).

36

FOUND 2 IN IP AND BRASS TAG STAMPED "ORANGE COUNTY SURVEYOR" PER (R1) DN. 0.6' IN DIRT ACCEPTED AS BC OF E'LY LINE OF (R8).

37

FOUND 2 IN IP AND BRASS TAG STAMPED "ORANGE COUNTY SURVEYOR" PER (R1) 0.3' IN DIRT ACCEPTED AS BC OF E'LY LINE OF (R8).

38

FOUND 2 IN IP AND BRASS TAG STAMPED "ORANGE COUNTY SURVEYOR" PER (R1) DN. 0.4' IN A.C. ACCEPTED AS BC OF E'LY LINE OF (R8).

39

FOUND 2 IN IP AND BRASS TAG STAMPED "ORANGE COUNTY SURVEYOR" PER (R1) DN. 0.3' IN A.C. ACCEPTED AS EC OF E'LY LINE OF (R8).

40

FOUND 2 IN IP AND BRASS TAG STAMPED "ORANGE COUNTY SURVEYOR" PER (R1) DN. 0.5' IN A.C. ACCEPTED AS ANGLE POINT OF E'LY LINE OF (R8).

41

FOUND 4 IN BRASS LA COUNTY FLOOD CONTROL DISK STAMPED "73 RW 18 1964" PER R1 DN. 1.6 ACCEPTED AS OFFSET MONUMENT PER (R1) TO THE E'LY LINE OF (R27).

REFERENCES

- (R1) = RSB 176/23-31
- (R2) = RSB 286/1-40
- (R3) = RECORD DRAWING AS-BUILT C01-701-1-A
- (R4) = PARCEL MAP 398/1-17
- (R5) = TRACT NO. 10548 MRLA 174/15-23
- (R6) = TRACT NO. 945 M.M. 31/11-12
- (R7) = TRACT NO. 3189 M.M. 96/5-12
- (R8) = BK.13486 PG. 1091 O.R. RECORDS OF ORANGE COUNTY
- (R9) = BK.2859 PG.446 O.R. RECORDS OF LA. COUNTY
- (R10) = BK.4483 PG. 6-7 O.R. RECORDS OF ORANGE COUNTY
- (R11) = BK.2790 PG. 436 O.R. RECORDS OF ORANGE COUNTY
- (R12) = BK.5109 PG. 392 O.R. RECORDS OF L.A. COUNTY
- (R13) = CORNER RECORD, C.R. 2008-0442
- (R14) = CORNER RECORD, C.R. 2000-0366
- (R15) = CORNER RECORD, C.R. 2012-3448
- (R16) = CORNER RECORD, C.R. 2000-0568
- (R17) = CORNER RECORD, C.R. 1998-0345
- (R18) = CORNER RECORD, P.W.F.B. 0325-486 L.A. COUNTY
- (R19) = CORNER RECORD, P.W.F.B. 0326-111 L.A. COUNTY
- (R20) = TRACT NO. 3019 M.M. 119/35-44
- (R21) = TRACT NO. 2572 M.M. 115/20-27
- (R22) = TRACT NO. 3224 M.M. 106/21-29
- (R23) = TRACT NO. 15797 M.M. 817/21-26
- (R24) = CORNER RECORD, C.R. 2007-0924
- (R25) = CORNER RECORD, C.R. 2003-1968
- (R26) = BK.4400 PG. 160 O.R. RECORDS OF ORANGE COUNTY
- (R27) = BK.4865 PG. 275 O.R. RECORDS OF L.A. COUNTY
- (R28) = TRACT NO. 5847 M.M. 211/15-20
- (R29) = L.A.CO.F.C.D. NOTES FC 2955/47-53
- (R30) = BK.7956-394 O.R. RECORDS OF ORANGE COUNTY
- (R31) = O.R. 82-334354 RECORDS OF ORANGE COUNTY
- (R32) = O.R. 82-334353 RECORDS OF ORANGE COUNTY
- (R33) = O.R. 82-189684 RECORDS OF ORANGE COUNTY
- (R34) = BK.3962 PG.202 RECORDS OF L.A. COUNTY
- (R35) = TRACT NO. 17703 MB.466/13-23 RECORDS OF L.A. COUNTY
- (R36) = BK.958 PG. 670 RECORDS OF L.A. COUNTY
- (R37) = O.R. 82-274324 RECORDS OF L.A. COUNTY
- (R38) = TRACT NO. 1680 M.M. 110/37-48
- (R39) = BK. 3126 PG. 285 O.R. L.A. COUNTY

HORIZONTAL DATUM

COORDINATES SHOWN ARE BASED ON THE CALIFORNIA COORDINATE SYSTEM (CCS83), ZONE VI, NAD 83, OCS (2007.00) EPOCH ADJUSTMENT.

ALL DISTANCES SHOWN ARE GRID, UNLESS OTHERWISE NOTED. TO OBTAIN GROUND DISTANCE MULTIPLY A GRID DISTANCE BY 1.00001940.

COMBINATION FACTOR WAS HELD AT POINT NUMBER #800 N:2234052.512', E:6003222.180

RECORD DISTANCES SHOWN HEREON ARE AS THEY APPEAR ON THE DOCUMENT OF RECORD. DISTANCES MAY BE EITHER GRID OR GROUND, AS PER SAID RECORD.

ALL DISTANCES ARE BASED ON THE U.S. SURVEY FOOT.

BASIS OF BEARINGS

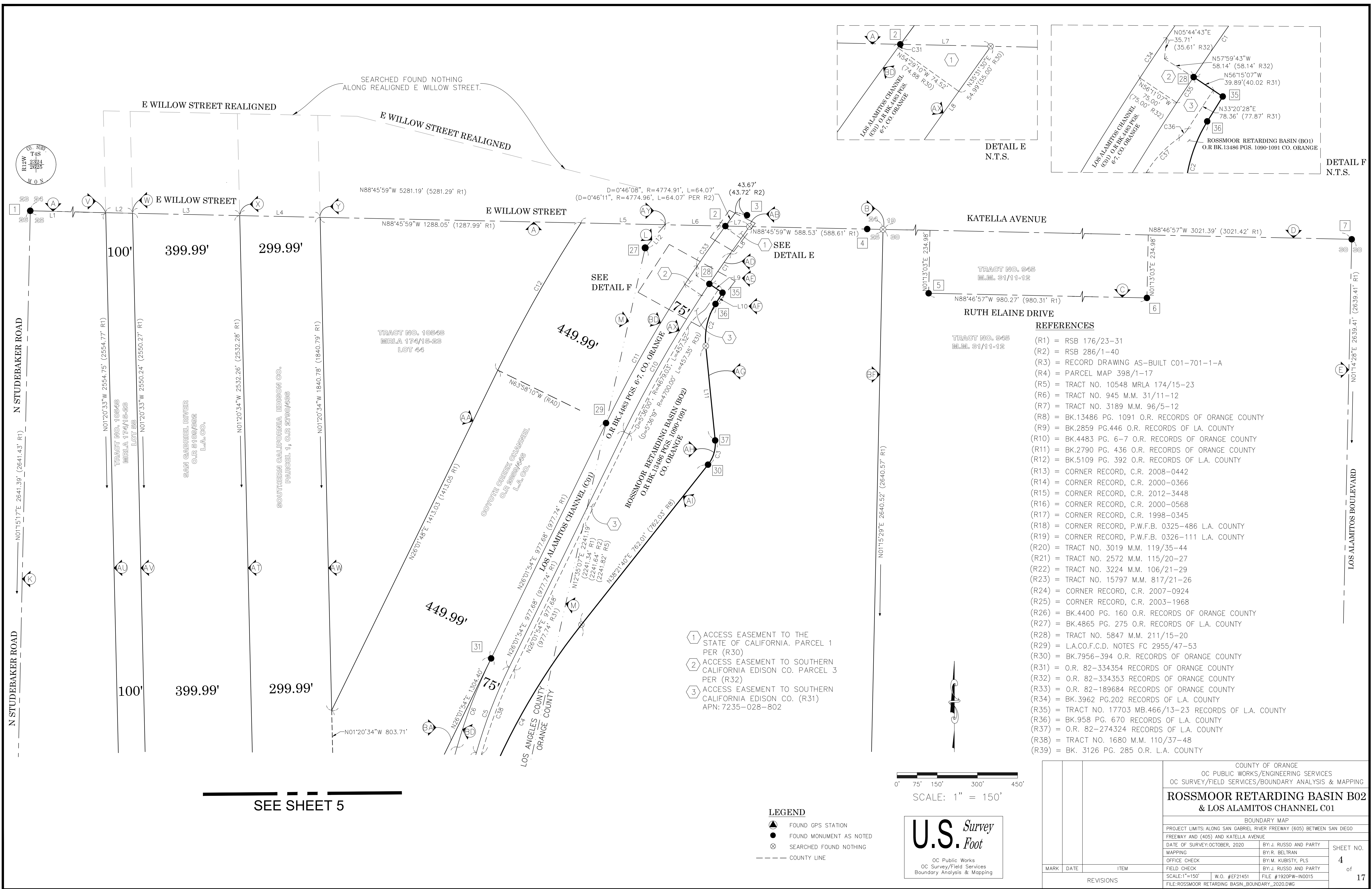
THE BASIS OF BEARINGS FOR THIS SURVEY IS BASED ON THE CALIFORNIA COORDINATE SYSTEM (CCS83), ZONE VI, NAD 83, OCS (2007.00) EPOCH ADJUSTMENT, AS DETERMINED LOCALLY BY A LINE BETWEEN CONTINUOUS GLOBAL POSITIONING STATIONS CGPS STATIONS (BLSA) AND (CCCS) BEING NORTH 66°06'41" EAST AS DERIVED FROM THE COORDINATES PUBLISHED BY THE CALIFORNIA SPATIAL REFERENCE CENTER (CSRC) ALONG WITH DATA SHEETS ON FILE IN THE OFFICE OF THE ORANGE COUNTY SURVEYOR.

LINE TABLE				LINE TABLE			
LINE #	BEARING	MEASURED DISTANCE	RECORD DISTANCE	LINE #	BEARING	MEASURED DISTANCE	RECORD DISTANCE
L1	N88°45'59"W	2378.53	2378.57' (R1)	L20	N88°48'13"W	1127.46	1127.49' (R1)
L2	N88°45'59"W	100.10	100.10' (R1)	L21	N01°20'34"W	174.70	175.01' (R1)
L3	N88°45'59"W	400.39	440.40' (R1)	L22	N88°46'22"W	3552.00	3552.10' (R20 R21 R22)
L4	N88°45'59"W	300.29	300.30' (R1)	L23	N35°08'16"E	335.09	335.10' (R1)
L5	N88°45'59"W	313.64	NO REF	L24	N26°02'05"E	413.45	413.46' (R1)
L6	N88°45'59"W	225.29	225.31' (R1)	L25	N23°10'18"E	807.80	807.77' (R1)
L7	N88°45'59"W	90.09	90.09' (R1)	L26	N23°10'18"E	15.23	NO REF
L8	N35°29'47"E	122.93	122.91' (R1)	L27	N01°13'36"E	1492.42	1492.46' (R4)
L9	N56°15'07"W	59.20	59.20 (R8)	L28	N01°13'36"E	188.13	188.24' (R23)
L10	N31°52'30"E	49.38	49.38 (R8)	L29	N88°46'22"W	323.40	323.43' (R1)
L11	N05°41'34"W	354.47	354.48 (R8)	L30	N88°46'22"W	283.05	283.06' (R1) 282.20' (R7)
L12	N40°46'09"E	113.82	113.82 (R1)	L31	N88°48'13"W	77.59	NO REF
L13	N88°46'22"W	80.86	80.85' (R1)	L32	N88°48'13"W	50.08	NO REF
L14	N01°20'34"W	4.20	4.20' (R1)	L33	N88°48'13"W	85.09	NO REF
L15	N01°20'34"W	43.87	43.77' (R1)	L34	N88°48'13"W	256.05	NO REF
L16	N88°46'22"W	40.39	40.37' (R1)	L35	N66°10'01"W	106.66	NO REF
L17	N88°46'22"W	16.18	16.17' (R1)	L36	N66°10'01"W	113.47	113.45' (R32)
L18	N88°46'22"W	24.21	24.21' (R1)	L37	N26°02'07"E	144.85	NO REF
L19	N88°46'22"W	107.81	107.81' (R1)	L38	N18°14'50"E	373.79	373.81' (R31)

CURVE TABLE						
CURVE #	DELTA	RADIUS	LENGTH	RECORD DELTA	RECORD RADIUS	RECORD LENGTH
C1	1°41'17"	4699.91'	138.46'	1°41'13"	4700.00'	138.38' (R1)
C2	37°34'04"	249.99'	163.91'	37°34'04"	250.00'	163.92' (R8)
C3	44°03'14"	125.00'	96.11'	44°03'20"	125.00'	96.11' (R8)
C4	20°38'06"	2499.95'	900.35'	20°38'09"	2500.00'	900.41' (R1)
C5	9°58'37"	1962.46'	341.72'	9°58'36"	1962.50'	341.72' (R1)
C6	9°58'37"	2037.46'	354.78'	9°58'36"	2037.50'	354.78' (R1)
C7	1°12'09"	3504.93'	73.56'	01°12'09"	3505.00'	73.56' (R1)
C8	26°41'48"	849.98'	396.05'	26°42'59"	850.00'	396.35' (R8)
C9	2°51'41"	3966.42'	198.09'	2°51'44"	3966.50'	198.15' (R1)
C10	9°27'53"	4699.91'	776.39'	9°27'53"	4700.00'	776.40' (R1)
C11	10°19'53"	4774.91'	861.00'	10°19'52"	4775.00'	860.98' (R1)
C12	6°55'43"	5224.90'	631.82'	6°55'43"	5225.00'	631.83' (R1)
C13	2°00'44"	2564.88'	90.08'	2°00'44"	2564.93'	90.08' (R1)
C14	2°02'02"	2664.88'	94.60'	2°02'02"	2664.93'	94.60' (R1)
C15	2°06'02"	3064.87'	112.36'	2°06'02"	3064.93'	112.37' (R1)
C17	9°58'50"	3474.93'	605.31'	9°58'50"	3475.00'	605.32' (R1)
C18	4°26'24"	4724.91'	366.15'	4°26'30"	4725.00'	366.29' (R1)
C19	5°32'25"	4724.91'	456.88'	5°32'20"	4725.00'	456.77' (R1)
C31	0°03'04"	4774.91'	4.25'	0°02'52"	4775.00'	3.98' (R30)
C33	2°11'54"	4774.91'	183.21'	NO REF	NO REF	NO REF
C34	0°58'41"	4774.91'	81.50'	0°58'37"	4775.00'	81.42' (R32)
C35	0°37'53"	4699.91'	51.80'	0°36'34"	4700.00'	50.00' (R32)
C36	21°58'51"	55.00'	21.10'	21°59'04"	55.00'	21.10' (R31)
C37	23°41'26"	195.00'	80.63'	21°59'04"	55.00'	21.10' (R31)
C38	9°58'37"	1942.46'	338.24'	9°59'45"	1942.50'	338.90' (R31)

				COUNTY OF ORANGE OC PUBLIC WORKS/ENGINEERING SERVICES OC SURVEY/FIELD SERVICES/BOUNDARY ANALYSIS & MAPPING					
				ROSSMOOR RETARDING BASIN B02 & LOS ALAMITOS CHANNEL C01					
				BOUNDARY MAP					
				PROJECT LIMITS: ALONG SAN GABRIEL RIVER FREEWAY (605) BETWEEN SAN DIEGO FREEWAY AND (405) AND KATELLA AVENUE					
				DATE OF SURVEY:OCTOBER, 2020		BY:J. RUSSO AND PARTY		SHEET NO.  3 of 17	
				MAPPING		BY:R. BELTRAN			
				OFFICE CHECK		BY:M. KUBISTY, PLS			
FIELD CHECK		BY:J. RUSSO AND PARTY							
MARK	DATE	ITEM		SCALE:NO SCALE		W.O. #EF21451	FILE #1920PW-IN0015		
REVISIONS				FILE:ROSSMOOR RETARDING BASIN_BOUNDARY_2020.DWG					







REFERENCES

- (R1) = RSB 176/23-31  
(R2) = RSB 286/1-40  
(R3) = RECORD DRAWING AS-BUILT C01-701-1-A  
(R4) = PARCEL MAP 398/1-17  
(R5) = TRACT NO. 10548 MRLA 174/15-23  
(R6) = TRACT NO. 945 M.M. 31/11-12  
(R7) = TRACT NO. 3189 M.M. 96/5-12  
(R8) = BK.13486 PG. 1091 O.R. RECORDS OF ORANGE COUNTY  
(R9) = BK.2859 PG.446 O.R. RECORDS OF L.A. COUNTY  
(R10) = BK.4483 PG. 6-7 O.R. RECORDS OF ORANGE COUNTY  
(R11) = BK.2790 PG. 436 O.R. RECORDS OF ORANGE COUNTY  
(R12) = BK.5109 PG. 392 O.R. RECORDS OF L.A. COUNTY  
(R13) = CORNER RECORD, C.R. 2008-0442  
(R14) = CORNER RECORD, C.R. 2000-0366  
(R15) = CORNER RECORD, C.R. 2012-3448  
(R16) = CORNER RECORD, C.R. 2000-0568  
(R17) = CORNER RECORD, C.R. 1998-0345  
(R18) = CORNER RECORD, P.W.F.B. 0325-486 L.A. COUNTY  
(R19) = CORNER RECORD, P.W.F.B. 0326-111 L.A. COUNTY  
(R20) = TRACT NO. 3019 M.M. 119/35-44  
(R21) = TRACT NO. 2572 M.M. 115/20-27  
(R22) = TRACT NO. 3224 M.M. 106/21-29  
(R23) = TRACT NO. 15797 M.M. 817/21-26  
(R24) = CORNER RECORD, C.R. 2007-0924  
(R25) = CORNER RECORD, C.R. 2003-1968  
(R26) = BK.4400 PG. 160 O.R. RECORDS OF ORANGE COUNTY  
(R27) = BK.4865 PG. 275 O.R. RECORDS OF L.A. COUNTY  
(R28) = TRACT NO. 5847 M.M. 211/15-20  
(R29) = L.A.CO.F.C.D. NOTES FC 2955/47-53  
(R30) = BK.7956-394 O.R. RECORDS OF ORANGE COUNTY  
(R31) = O.R. 82-334354 RECORDS OF ORANGE COUNTY  
(R32) = O.R. 82-334353 RECORDS OF ORANGE COUNTY  
(R33) = O.R. 82-189684 RECORDS OF ORANGE COUNTY  
(R34) = BK.3962 PG.202 RECORDS OF L.A. COUNTY  
(R35) = TRACT NO. 17703 MB.466/13-23 RECORDS OF L.A. COUNTY  
(R36) = BK.958 PG. 670 RECORDS OF L.A. COUNTY  
(R37) = O.R. 82-274324 RECORDS OF L.A. COUNTY  
(R38) = TRACT NO. 1680 M.M. 110/37-48  
(R39) = BK. 3126 PG. 285 O.R. L.A. COUNTY

TRACT NO. 3189  
M.M. 96/5-12

DETAIL H  
N.T.S.

SEE  
DETAIL C

VARIES

VARIES

DETAIL C  
N.T.S.

DETAIL A  
N.T.S.

SCALE: 1" = 150'

LEGEND

- ▲ FOUND GPS STATION  
● FOUND MONUMENT AS NOTED  
⊗ SEARCHED FOUND NOTHING  
--- COUNTY LINE

COUNTY OF ORANGE OC PUBLIC WORKS/ENGINEERING SERVICES OC SURVEY/FIELD SERVICES/BOUNDARY ANALYSIS & MAPPING		
ROSSMOOR RETARDING BASIN B02 & LOS ALAMITOS CHANNEL C01		
BOUNDARY MAP		
PROJECT LIMITS: ALONG SAN GABRIEL RIVER FREEWAY (605) BETWEEN SAN DIEGO FREEWAY AND (405) AND KATELLA AVENUE		
DATE OF SURVEY: OCTOBER, 2020	BY: J. RUSSO AND PARTY	SHEET NO. <b>5</b> of 17
MAPPING	BY: R. BELTRAN	
OFFICE CHECK	BY: M. KUBISTY, PLS	
FIELD CHECK	BY: J. RUSSO AND PARTY	
SCALE: NO SCALE	W.O. #EF21451	FILE #1920PW-IN0015
FILE: ROSSMOOR_RETARDING_BASIN_BOUNDARY_2020.DWG		

MARK	DATE	ITEM
REVISIONS		

SEE SHEET 4

SEE SHEET 6



SEE SHEET 5

REFERENCES

- (R1) = RSB 176/23-31  
(R2) = RSB 286/1-40  
(R3) = RECORD DRAWING AS-BUILT C01-701-1-A  
(R4) = PARCEL MAP 398/1-17  
(R5) = TRACT NO. 10548 MRLA 174/15-23  
(R6) = TRACT NO. 945 M.M. 31/11-12  
(R7) = TRACT NO. 3189 M.M. 96/5-12  
(R8) = BK.13486 PG. 1091 O.R. RECORDS OF ORANGE COUNTY  
(R9) = BK.2859 PG.446 O.R. RECORDS OF L.A. COUNTY  
(R10) = BK.4483 PG. 6-7 O.R. RECORDS OF ORANGE COUNTY  
(R11) = BK.2790 PG. 436 O.R. RECORDS OF ORANGE COUNTY  
(R12) = BK.5109 PG. 392 O.R. RECORDS OF L.A. COUNTY  
(R13) = CORNER RECORD, C.R. 2008-0442  
(R14) = CORNER RECORD, C.R. 2000-0366  
(R15) = CORNER RECORD, C.R. 2012-3448  
(R16) = CORNER RECORD, C.R. 2000-0568  
(R17) = CORNER RECORD, C.R. 1998-0345  
(R18) = CORNER RECORD, P.W.F.B. 0325-486 L.A. COUNTY  
(R19) = CORNER RECORD, P.W.F.B. 0326-111 L.A. COUNTY  
(R20) = TRACT NO. 3019 M.M. 119/35-44  
(R21) = TRACT NO. 2572 M.M. 115/20-27  
(R22) = TRACT NO. 3224 M.M. 106/21-29  
(R23) = TRACT NO. 15797 M.M. 817/21-26  
(R24) = CORNER RECORD, C.R. 2007-0924  
(R25) = CORNER RECORD, C.R. 2003-1968  
(R26) = BK.4400 PG. 160 O.R. RECORDS OF ORANGE COUNTY  
(R27) = BK.4865 PG. 275 O.R. RECORDS OF L.A. COUNTY  
(R28) = TRACT NO. 5847 M.M. 211/15-20  
(R29) = L.A.CO.F.C.D. NOTES FC 2955/47-53  
(R30) = BK.7956-394 O.R. RECORDS OF ORANGE COUNTY  
(R31) = O.R. 82-334354 RECORDS OF ORANGE COUNTY  
(R32) = O.R. 82-334353 RECORDS OF ORANGE COUNTY  
(R33) = O.R. 82-189684 RECORDS OF ORANGE COUNTY  
(R34) = BK.3962 PG.202 RECORDS OF L.A. COUNTY  
(R35) = TRACT NO. 17703 MB.466/13-23 RECORDS OF L.A. COUNTY  
(R36) = BK.958 PG. 670 RECORDS OF L.A. COUNTY  
(R37) = O.R. 82-274324 RECORDS OF L.A. COUNTY  
(R38) = TRACT NO. 1680 M.M. 110/37-48  
(R39) = BK. 3126 PG. 285 O.R. L.A. COUNTY

LEGEND

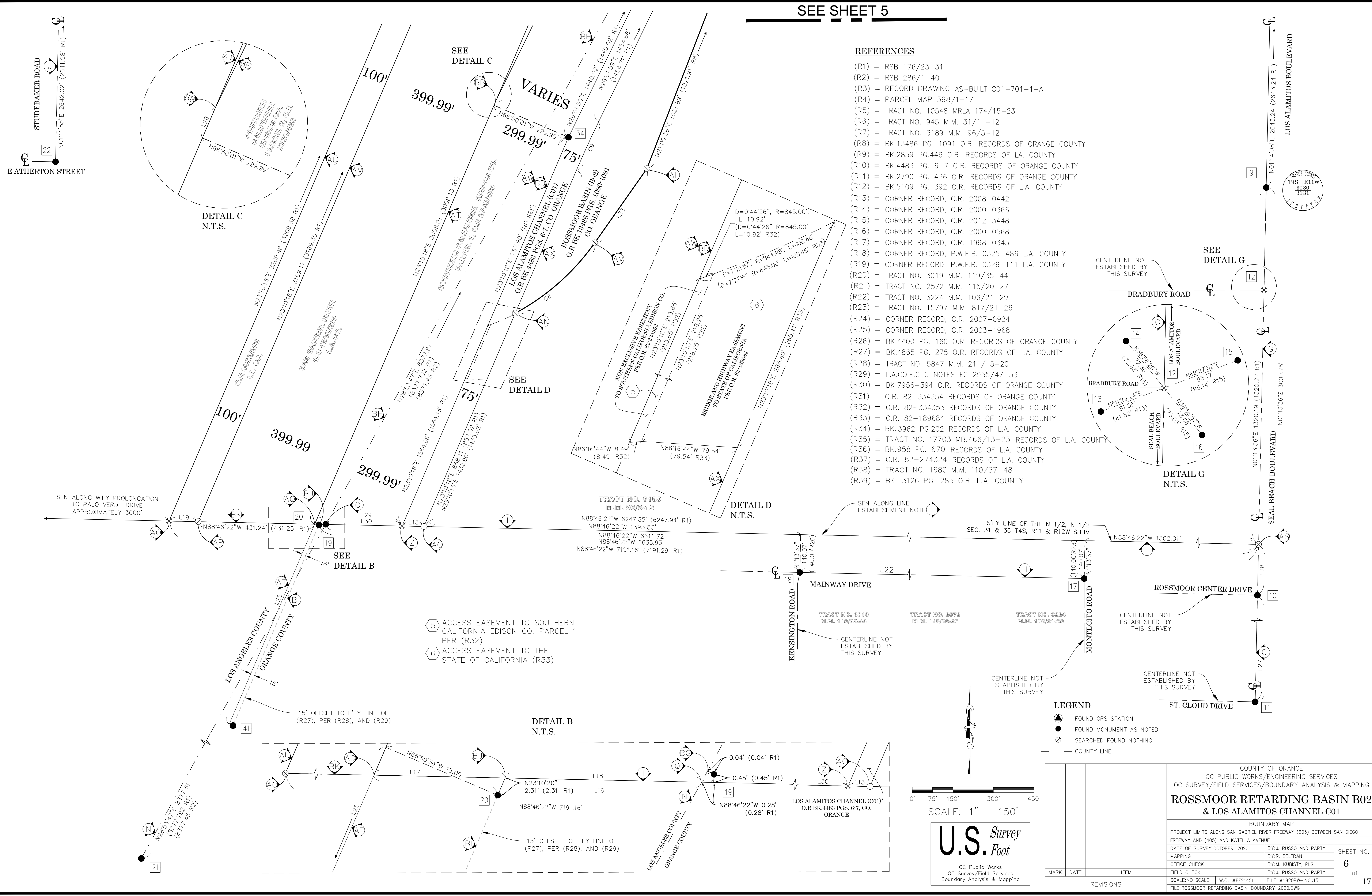
- ▲ FOUND GPS STATION  
● FOUND MONUMENT AS NOTED  
⊗ SEARCHED FOUND NOTHING  
--- COUNTY LINE

SCALE: 1" = 150'

U.S. Survey  
Foot  
OC Public Works  
OC Survey/Field Services  
Boundary Analysis & Mapping

COUNTY OF ORANGE OC PUBLIC WORKS/ENGINEERING SERVICES OC SURVEY/FIELD SERVICES/BOUNDARY ANALYSIS & MAPPING		
ROSSMOOR RETARDING BASIN B02 & LOS ALAMITOS CHANNEL C01		
BOUNDARY MAP		
PROJECT LIMITS: ALONG SAN GABRIEL RIVER FREEWAY (605) BETWEEN SAN DIEGO FREEWAY AND (405) AND KATELLA AVENUE		
DATE OF SURVEY: OCTOBER, 2020	BY: J. RUSSO AND PARTY	SHEET NO. <b>6</b> of <b>17</b>
MAPPING	BY: R. BELTRAN	
OFFICE CHECK	BY: M. KUBISTY, PLS	
FIELD CHECK	BY: J. RUSSO AND PARTY	
SCALE: NO SCALE	W.O. #EF21451	FILE #1920PW-IN0015
FILE: ROSSMOOR_RETARDING_BASIN_BOUNDARY_2020.DWG		

MARK	DATE	ITEM
REVISIONS		





CURVE TABLE						
CURVE #	DELTA	RADIUS	LENGTH	RECORD DELTA	RECORD RADIUS	RECORD LENGTH
C19	9°27'54"	4733.41'	781.93'	9°27'53"	4733.50'	781.93' R3
C20	9°58'37"	1995.96'	347.56'	9°59'46"	1996.00'	348.23' R3
C21	9°58'42"	3949.97'	687.91'	10°00'41"	3950.00'	690.19' R3
C22	2°51'41"	3999.92'	199.77'	2°51'44"	4000.00'	199.82' R3

LINE TABLE			
LINE #	BEARING	MEASURED DISTANCE	RECORD DISTANCE
L34	N35°29'47"E	100.09'	100.00' R3
L35	N26°01'54"E	977.68'	977.74' R3
L36	N16°03'17"E	1214.89'	1212.91' R3
L37	N26°01'59"E	1410.46'	1410.16' R3
L38	N23°10'18"E	1446.42'	1445.25' R3

MONUMENT NOTES

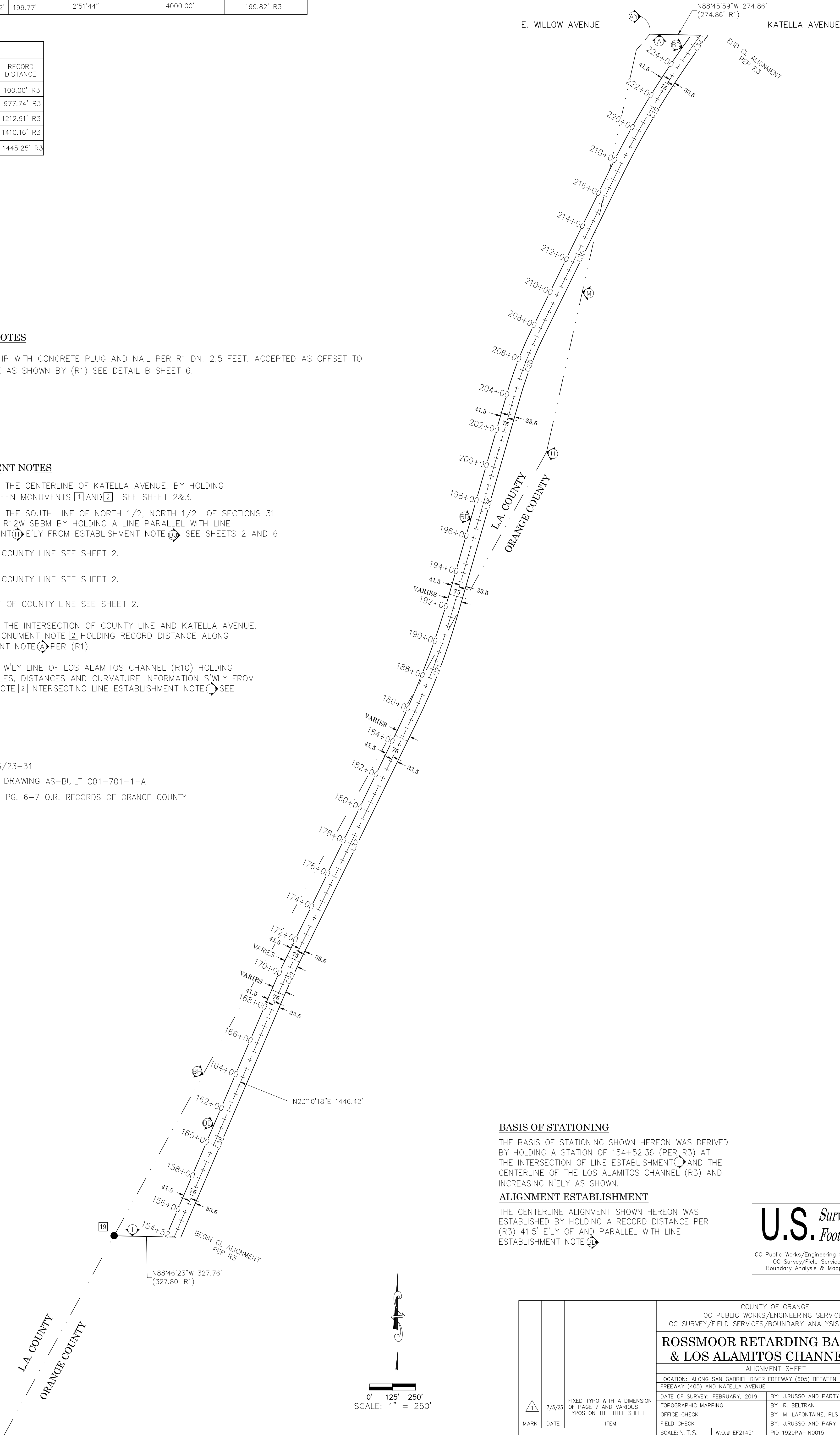
[19] FOUND 2 IN IP WITH CONCRETE PLUG AND NAIL PER R1 DN. 2.5 FEET. ACCEPTED AS OFFSET TO COUNTY LINE AS SHOWN BY (R1) SEE DETAIL B SHEET 6.

ESTABLISHMENT NOTES

- (A) ESTABLISHED THE CENTERLINE OF KATELLA AVENUE. BY HOLDING A LINE BETWEEN MONUMENTS [1] AND [2] SEE SHEET 2&3.
- (1) ESTABLISHED THE SOUTH LINE OF NORTH 1/2, NORTH 1/2 OF SECTIONS 31 AND 36 T4S R12W SBBM BY HOLDING A LINE PARALLEL WITH LINE ESTABLISHMENT (6) E'LY FROM ESTABLISHMENT NOTE (6) SEE SHEETS 2 AND 6
- (M) PORTION OF COUNTY LINE SEE SHEET 2.
- (6) PORTION OF COUNTY LINE SEE SHEET 2.
- (U) ANGLE POINT OF COUNTY LINE SEE SHEET 2.
- (A) ESTABLISHED THE INTERSECTION OF COUNTY LINE AND KATELLA AVENUE. W'LY FROM MONUMENT NOTE [2] HOLDING RECORD DISTANCE ALONG ESTABLISHMENT NOTE (A) PER (R1).
- (6) ESTABLISHED W'LY LINE OF LOS ALAMITOS CHANNEL (R10) HOLDING RECORD ANGLES, DISTANCES AND CURVATURE INFORMATION S'WLY FROM MONUMENT NOTE [2] INTERSECTING LINE ESTABLISHMENT NOTE (1) SEE SHEETS 2-6.

REFERENCES

- (R1) = RSB 176/23-31
- (R3) = RECORD DRAWING AS-BUILT C01-701-1-A
- (R10) = BK.4483 PG. 6-7 O.R. RECORDS OF ORANGE COUNTY



BASIS OF STATIONING


THE BASIS OF STATIONING SHOWN HEREON WAS DERIVED BY HOLDING A STATION OF 154+52.36 (PER R3) AT THE INTERSECTION OF LINE ESTABLISHMENT (1) AND THE CENTERLINE OF THE LOS ALAMITOS CHANNEL (R3) AND INCREASING N'ELY AS SHOWN.

ALIGNMENT ESTABLISHMENT

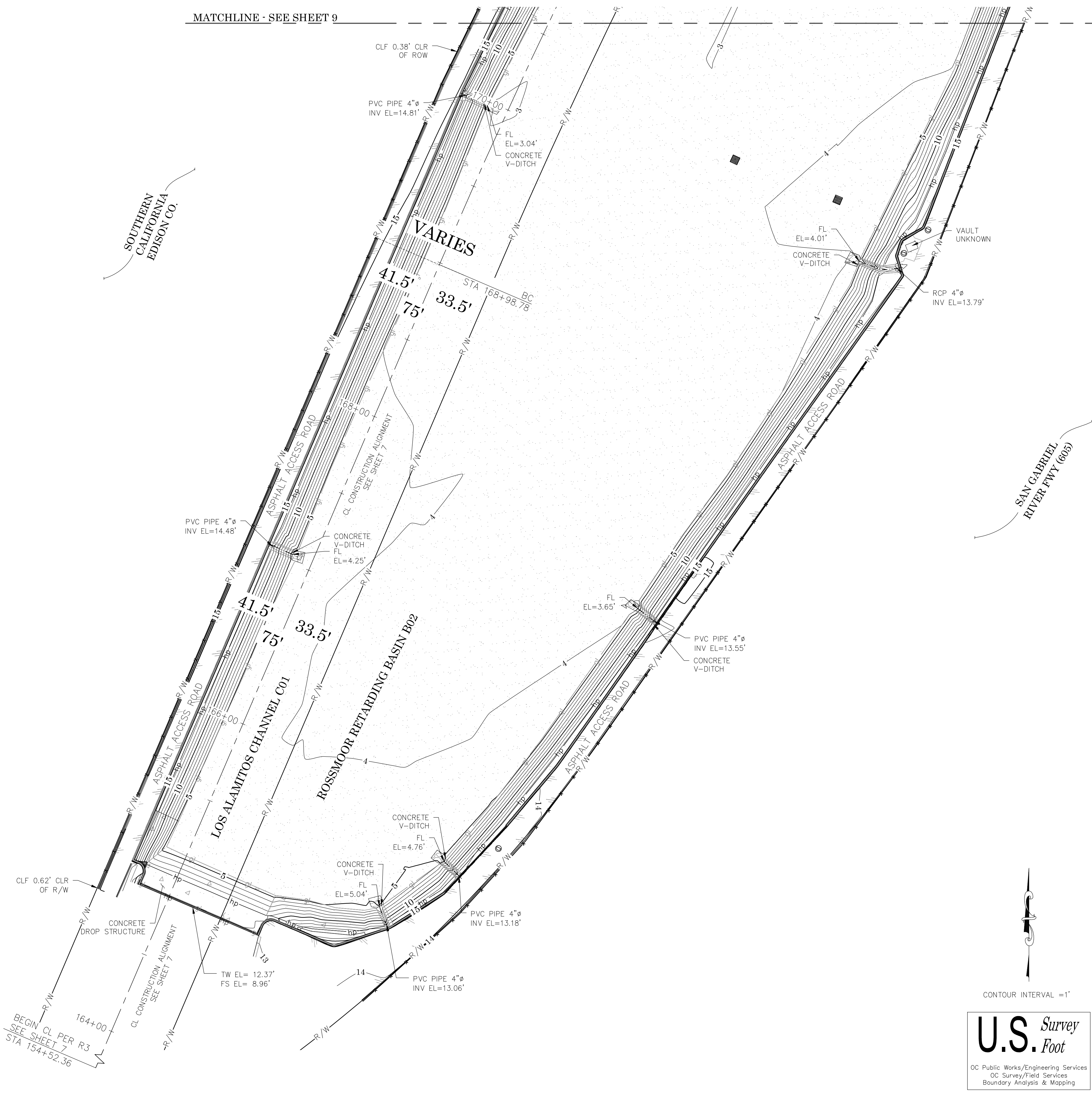
THE CENTERLINE ALIGNMENT SHOWN HEREON WAS ESTABLISHED BY HOLDING A RECORD DISTANCE PER (R3) 41.5' E'LY OF AND PARALLEL WITH LINE ESTABLISHMENT NOTE (6)

U.S. Survey Foot

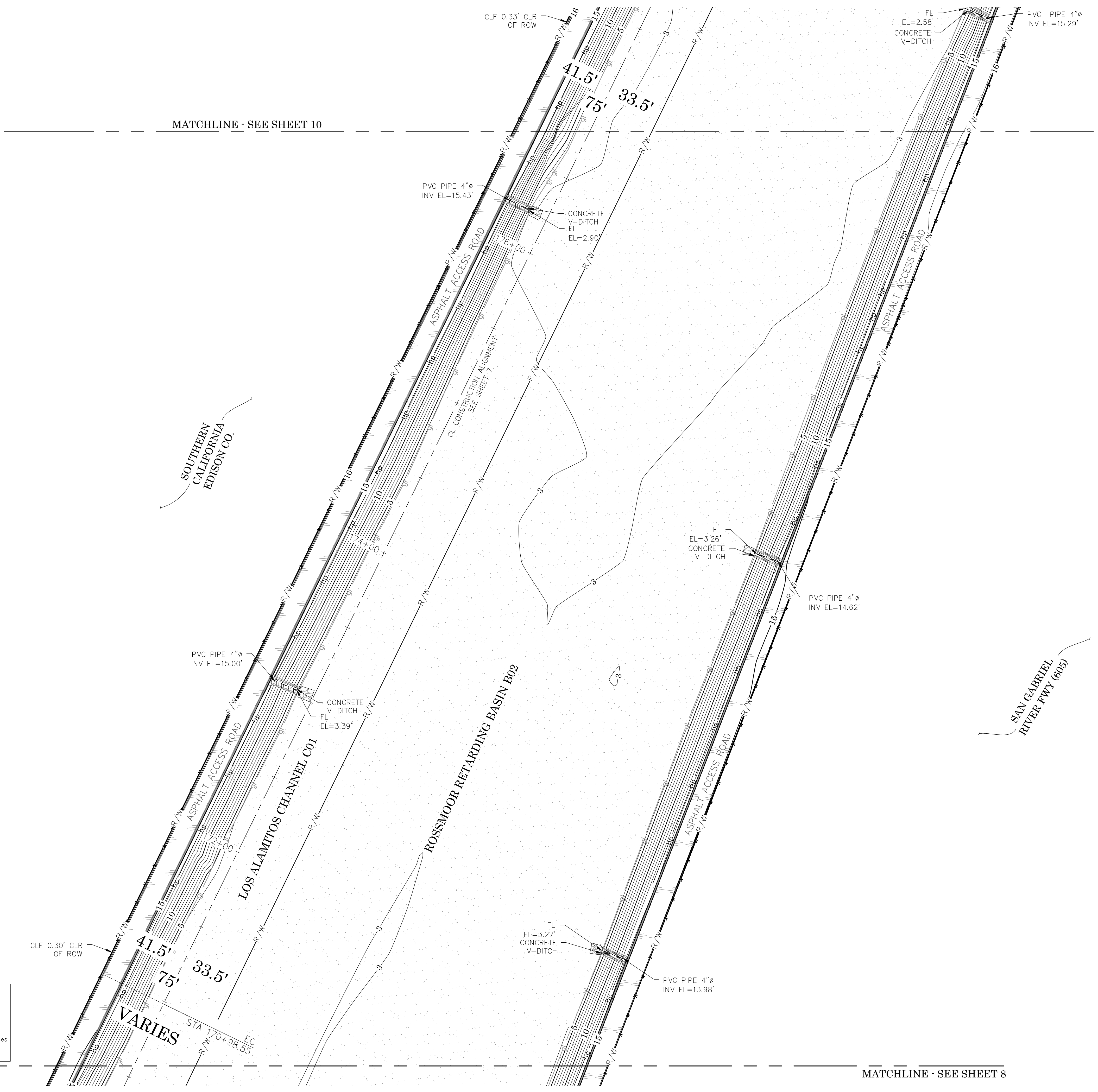
OC Public Works/Engineering Services  
OC Survey/Field Services  
Boundary Analysis & Mapping

		COUNTY OF ORANGE OC PUBLIC WORKS/ENGINEERING SERVICES OC SURVEY/ FIELD SERVICES/ENGINEERING ANALYSIS & MAPPING				
ROSSMOOR RETARDING BASIN B01 & LOS ALAMITOS CHANNEL CO2						
ALIGNMENT SHEET						
LOCATION: ALONG SAN GABRIEL RIVER FREEWAY (605) BETWEEN SAN DIEGO FREEWAY (405) AND KATELLA AVENUE						
	7/3/23	FIXED TYPO WITH A DIMENSION OF PAGE 7 AND VARIOUS TYPOS ON THE TITLE SHEET		DATE OF SURVEY: FEBRUARY, 2019	BY: J.RUSSO AND PARTY	SHEET NO.  <b>7</b> of <b>17</b>
				TOPOGRAPHIC MAPPING	BY: R. BELTRAN	
				OFFICE CHECK	BY: M. LAFONTAINE, PLS	
				FIELD CHECK	BY: J.RUSSO AND PARTY	
MARK	DATE	ITEM	SCALE: N.T.S.	W.O.# EF21451	PID 1920PW-IN0015	
REVISIONS			FILE:ROSSMOOR RETARDING BASIN TOPO.DWG			









### LEGEND

SYMBOL		LINE PATTERN KEY
DGT	Gate, Double	Building Outline
SGT	Gate, single	Centerline
GRI	Grate Inlet	Edge of Conc
MHSD	Manhole Storm Drain	Edge of Asphalt Pavement
PBXTL	Pull Box Telephone	X-X Fence Chain Link
PPO	Pipe Outlet/Inlet	Flowline
PST	Post	hp Hinge Point
VLTUN	Vault, Undefined	Wall, Concrete
VLVGA	Valve Gas	
UGOWD	Utility Pole 2LT-UG Wood	

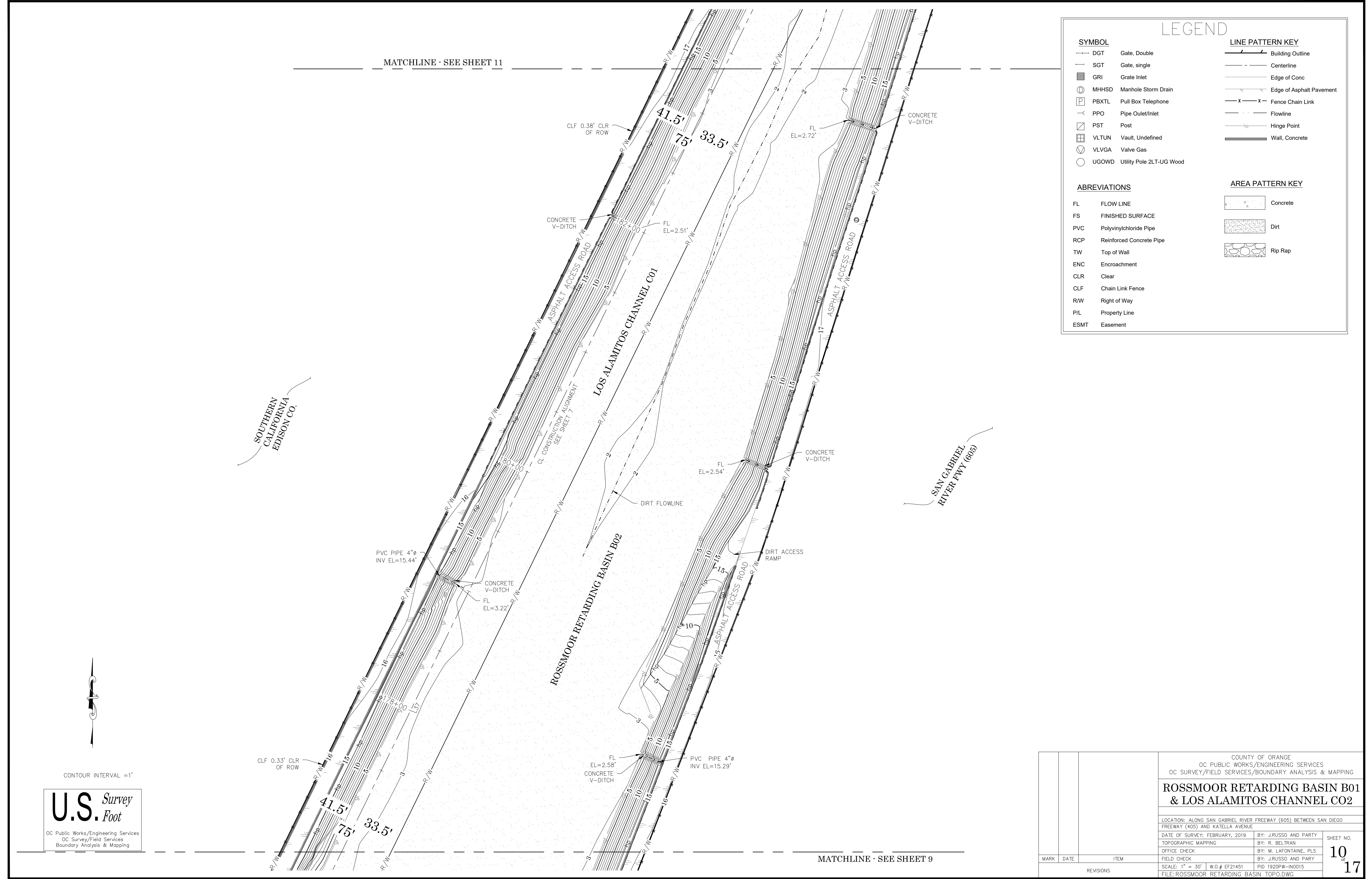
ABREVIATIONS		AREA PATTERN KEY
FL	FLOW LINE	Concrete
FS	FINISHED SURFACE	Dirt
PVC	Polyvinylchloride Pipe	Rip Rap
RCP	Reinforced Concrete Pipe	
TW	Top of Wall	
ENC	Encroachment	
CLR	Clear	
CLF	Chain Link Fence	
R/W	Right of Way	
P/L	Property Line	
ESMT	Easement	

U.S. Survey  
Foot

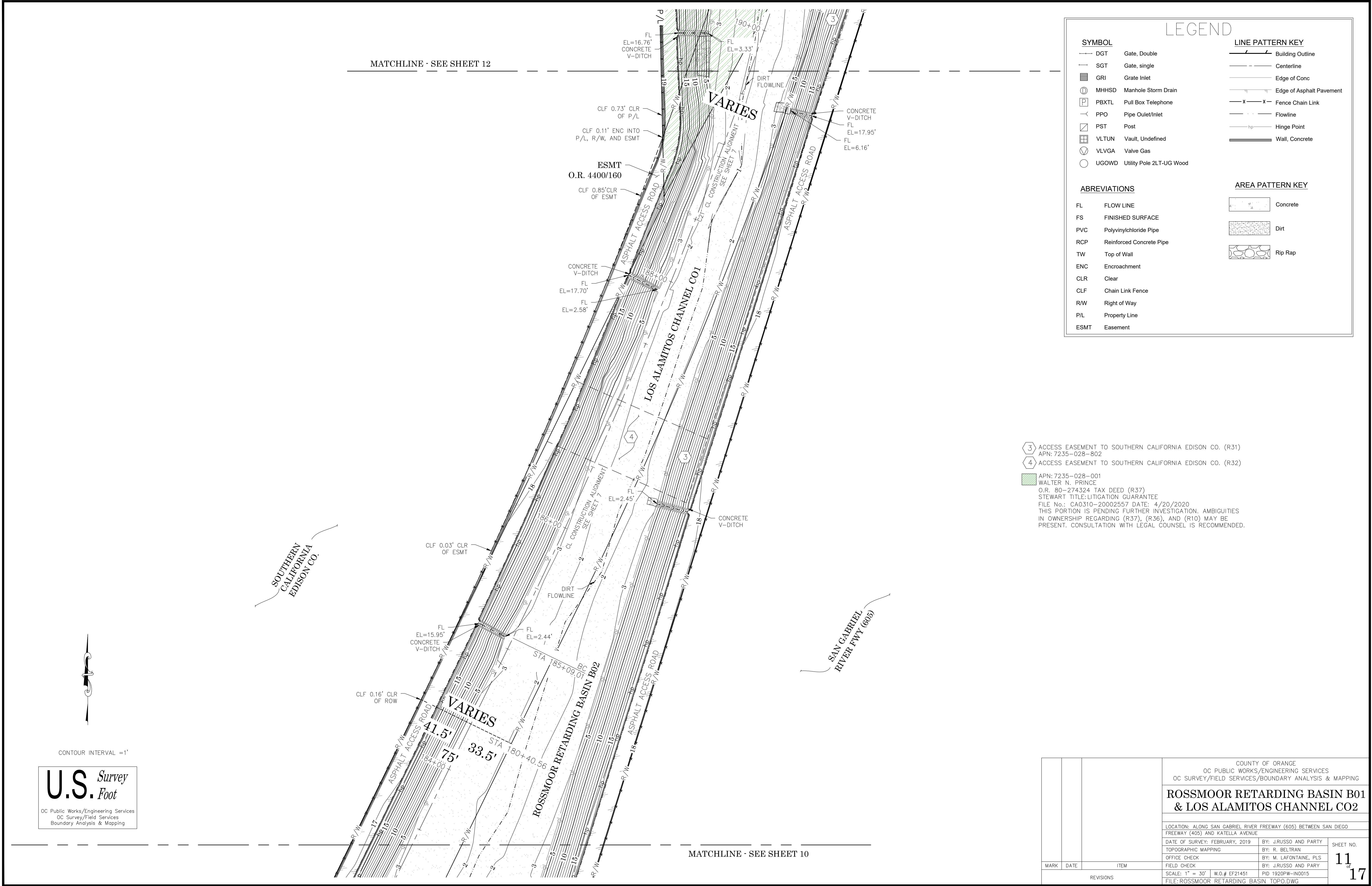
OC Public Works/Engineering Services  
OC Survey/Field Services  
Boundary Analysis & Mapping

			COUNTY OF ORANGE OC PUBLIC WORKS/ENGINEERING SERVICES OC SURVEY/FIELD SERVICES/BOUNDARY ANALYSIS & MAPPING		
			ROSSMOOR RETARDING BASIN B01 & LOS ALAMITOS CHANNEL C02		
			LOCATION: ALONG SAN GABRIEL RIVER FREEWAY (605) BETWEEN SAN DIEGO FREEWAY (405) AND KATELLA AVENUE		
			DATE OF SURVEY: FEBRUARY, 2019	BY: JRUSO AND PARTY	SHEET NO.  9 of 17
			TOPOGRAPHIC MAPPING	BY: R. BELTRAN	
			OFFICE CHECK	BY: M. LAFONTAINE, PLS	
			FIELD CHECK	BY: JRUSO AND PARTY	
			SCALE: 1" = 30'	W.O.# EF21451	
MARK DATE ITEM			PID 1920PW-IN0015		
REVSIONS			FILE:ROSSMOOR RETARDING BASIN TOPO.DWG		

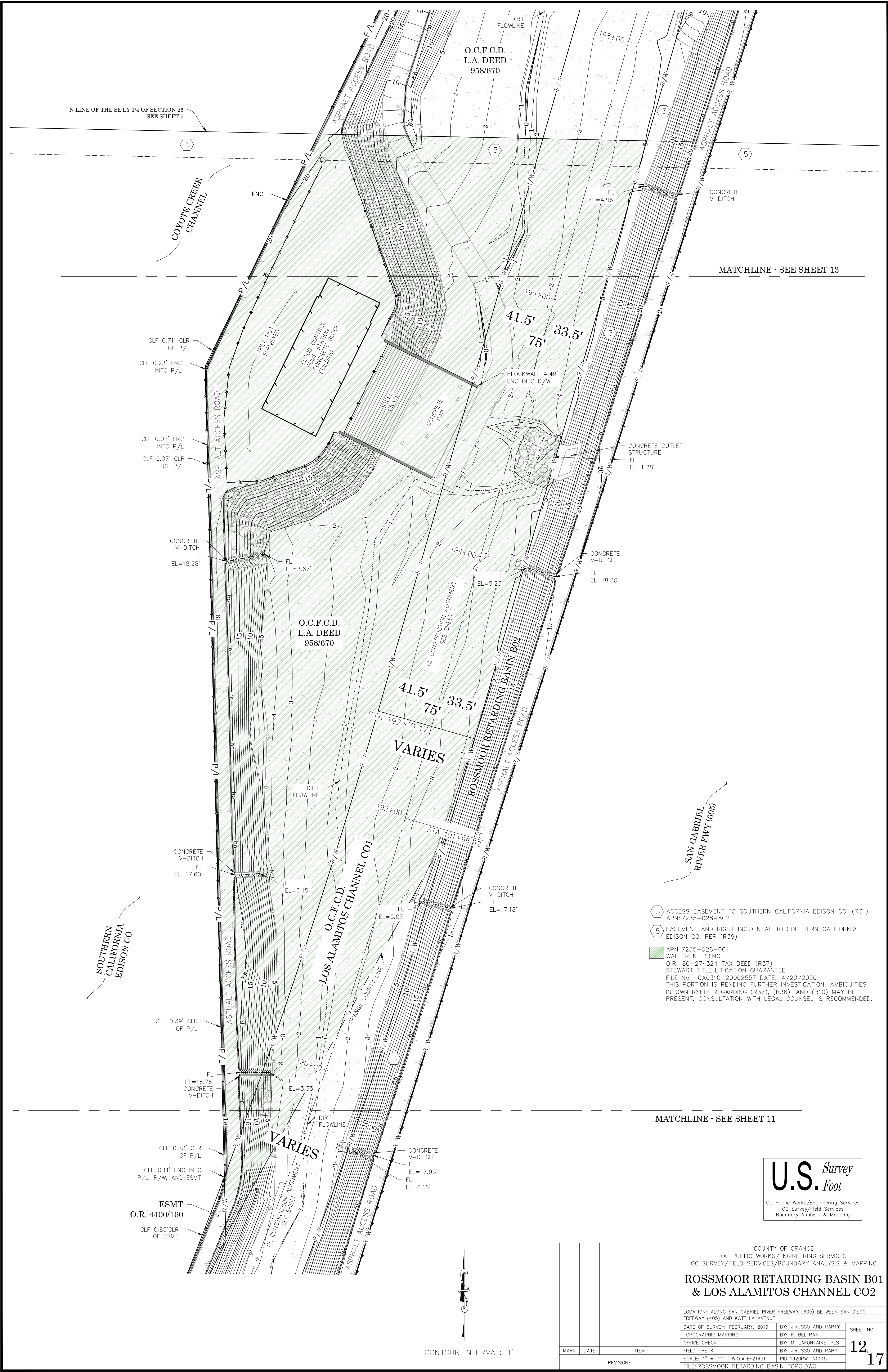












- 3 ACCESS EASEMENT TO SOUTHERN CALIFORNIA EDISON CO. (R31)  
APN: 7235-028-802
- 5 EASEMENT AND RIGHT INCIDENTAL TO SOUTHERN CALIFORNIA EDISON CO. PER (R39)
- APN: 7235-028-001  
WALTER N. PRINCE  
O.R. 80-274324 TAX DEED (R37)  
STEWART TITLE: LITIGATION GUARANTEE  
FILE NO.: CA0310-20002557 DATE: 4/20/2020  
THIS PORTION IS PENDING FURTHER INVESTIGATION. AMBIGUITIES IN OWNERSHIP REGARDING (R37), (R36), AND (R10) MAY BE PRESENT. CONSULTATION WITH LEGAL COUNSEL IS RECOMMENDED.

**U.S. Survey**  
**Foot**

OC Public Works/Engineering Services  
OC Survey/Field Services  
Boundary Analysis & Mapping

			COUNTY OF ORANGE OC PUBLIC WORKS/ENGINEERING SERVICES OC SURVEY/FIELD SERVICES/BOUNDARY ANALYSIS & MAPPING	
			<b>ROSSMOOR RETARDING BASIN B01 &amp; LOS ALAMITOS CHANNEL C02</b>	
			LOCATION: ALONG SAN GABRIEL RIVER FREEWAY (605) BETWEEN SAN DIEGO FREEWAY (405) AND KATELLA AVENUE	
DATE OF SURVEY: FEBRUARY, 2019		BY: J. RUSSO AND PARTY	SHEET NO. <b>12</b> <b>17</b>	
TOPOGRAPHIC MAPPING		BY: R. BELTRAN		
OFFICE CHECK		BY: M. LAFONTAINE, PLS		
FIELD CHECK		BY: J. RUSSO AND PARTY		
SCALE: 1" = 30'		W.O.# EF21451		
REVISIONS		FILE: ROSSMOOR RETARDING BASIN TOPO.DWG		



MATCHLINE · SEE SHEET 14

## LEGEND

### SYMBOL

DGT	Gate, Double
SGT	Gate, single
GRI	Grate Inlet
MHSD	Manhole Storm Drain
PBXTL	Pull Box Telephone
PPO	Pipe Outlet/Inlet
PST	Post
VLTUN	Vault, Undefined
VLVGA	Valve Gas
UGOWD	Utility Pole 2LT-UG Wood

### LINE PATTERN KEY

Building Outline
Centerline
Edge of Conc
Edge of Asphalt Pavement
Fence Chain Link
Flowline
Hinge Point
Wall, Concrete

### ABBREVIATIONS

FL	FLOW LINE
FS	FINISHED SURFACE
PVC	Polyvinylchloride Pipe
RCP	Reinforced Concrete Pipe
TW	Top of Wall
ENC	Encroachment
CLR	Clear
CLF	Chain Link Fence
R/W	Right of Way
P/L	Property Line
ESMT	Easement

### AREA PATTERN KEY

Concrete
Dirt
Rip Rap

N LINE OF THE SE'LY 1/4 OF SECTION 25  
SEE SHEET 5

COYOTE CREEK  
CHANNEL

CLF 0.71' CLR  
OF P/L

AREA NOT  
SURVEYED

FLOOD CONTROL  
PUMP STATION  
CONCRETE BLOCK  
BUILDING

O.C.F.C.D.  
L.A. DEED  
958/670

LOS ALAMITOS CHANNEL CO1

ROSSMOOR RETARDING BASIN B02

SAN GABRIEL  
RIVER FWY (605)

- 3 ACCESS EASEMENT TO SOUTHERN CALIFORNIA EDISON CO. (R31)  
APN: 7235-028-802
- 5 EASEMENT AND RIGHT INCIDENTAL TO SOUTHERN CALIFORNIA  
EDISON CO. PER (R39)
- APN: 7235-028-001  
WALTER N. PRINCE  
O.R. 80-274324 TAX DEED (R37)  
STEWART TITLE: LITIGATION GUARANTEE  
FILE No.: CA0310-20002557 DATE: 4/20/2020  
THIS PORTION IS PENDING FURTHER INVESTIGATION. AMBIGUITIES  
IN OWNERSHIP REGARDING (R37), (R36), AND (R10) MAY BE  
PRESENT. CONSULTATION WITH LEGAL COUNSEL IS RECOMMENDED.

CONTOUR INTERVAL = 1'

**U.S. Survey**  
**Foot**

OC Public Works/Engineering Services  
OC Survey/Field Services  
Boundary Analysis & Mapping

MATCHLINE · SEE SHEET 12

COUNTY OF ORANGE  
OC PUBLIC WORKS/ENGINEERING SERVICES  
OC SURVEY/FIELD SERVICES/BOUNDARY ANALYSIS & MAPPING

## ROSSMOOR RETARDING BASIN B01 & LOS ALAMITOS CHANNEL CO2

LOCATION: ALONG SAN GABRIEL RIVER FREEWAY (605) BETWEEN SAN DIEGO  
FREEWAY (405) AND KATELLA AVENUE

DATE OF SURVEY: FEBRUARY, 2019 BY: JRUSSO AND PARTY

TOPOGRAPHIC MAPPING BY: R. BELTRAN

OFFICE CHECK BY: M. LAFONTAINE, PLS

FIELD CHECK BY: JRUSSO AND PARTY

SCALE: 1" = 30' W.O.# EF21451 PD 1920PW-IN0015

FILE: ROSSMOOR RETARDING BASIN TOPO.DWG

SHEET NO.

13

17








## SYMBOL

- LINE PATTERN KEY

- ## ABREVIATIONS

- |      |                          |
|------|--------------------------|
| FL   | FLOW LINE                |
| FS   | FINISHED SURFACE         |
| PVC  | Polyvinylchloride Pipe   |
| RCP  | Reinforced Concrete Pipe |
| TW   | Top of Wall              |
| ENC  | Encroachment             |
| CLR  | Clear                    |
| CLF  | Chain Link Fence         |
| R/W  | Right of Way             |
| P/L  | Property Line            |
| ESMT | Easement                 |

AREA PATTERN KEY

- 
- Concrete
- Dirt
- Rip Rap

MATCHLINE - SEE SHEET 16

MATCHLINE - SEE SHEET 14

CONTOUR INTERVAL = 1'

U.S. *Survey*  
Foot

OC Public Works/Engineering Services  
OC Survey/Field Services  
Boundary Analysis & Mapping

3 ACCESS EASEMENT TO SOUTHERN CALIFORNIA EDISON CO. (R31)  
APN: 7235-028-802

COUNTY OF ORANGE  
OC PUBLIC WORKS/ENGINEERING SERVICES  
OC SURVEY/FIELD SERVICES/BOUNDARY ANALYSIS & MAPPING

# ROSSMOOR RETARDING BASIN B01 & LOS ALAMITOS CHANNEL C02

LOCATION: ALONG SAN GABRIEL RIVER FREEWAY (605) BETWEEN SAN DIEGO  
FREEWAY (405) AND KATELLA AVENUE

DATE OF SURVEY: FEBRUARY, 2019	BY: J.RUSSO AND PART
--------------------------------	----------------------

TOPOGRAPHIC MAPPING	BY: R. BELTRAN
---------------------	----------------

OFFICE CHECK	BY: M. LAFONTAINE, PLS
FIELD CHECK	BY: LEBUSO AND BARRY

FIELD CHECK		BY: J.ROSSO AND PARY
SCALE: 1" = 30'	W.O. # EE21451	PID 1820BW-IN0015

FILE:ROSSMOOR RETARDING BASIN TOPO.DWG









SHEET NO.

15<sub>of</sub> 17



## SYMBOL

- LINE PATTERN KEY

- |   |                          |
|---|--------------------------|
|  | Building Outline         |
|  | Centerline               |
|  | Edge of Conc             |
|  | Edge of Asphalt Pavement |
|  | Fence Chain Link         |
|  | Flowline                 |
|  | Hinge Point              |
|  | Wall, Concrete           |

## ABREVIATIONS

- |      |                          |
|------|--------------------------|
| FL   | FLOW LINE                |
| FS   | FINISHED SURFACE         |
| PVC  | Polyvinylchloride Pipe   |
| RCP  | Reinforced Concrete Pipe |
| TW   | Top of Wall              |
| ENC  | Encroachment             |
| CLR  | Clear                    |
| CLF  | Chain Link Fence         |
| R/W  | Right of Way             |
| P/L  | Property Line            |
| ESMT | Easement                 |

AREA PATTERN KEY

- 

MATCHLINE - SEE SHEET 17

MATCHLINE - SEE SHEET 15

CONTOUR INTERVAL =1'

U.S. *Survey Foot*

OC Public Works/Engineering Services  
OC Survey/Field Services  
Boundary Analysis & Mapping

3 ACCESS EASEMENT TO SOUTHERN CALIFORNIA EDISON CO. (R31)  
APN: 7235-028-802

COUNTY OF ORANGE  
OC PUBLIC WORKS/ENGINEERING SERVICES  
OC SURVEY/FIELD SERVICES/BOUNDARY ANALYSIS & MAPPING

ROSSMOOR RETARDING BASIN B01  
& LOS ALAMITOS CHANNEL C02

LOCATION: ALONG SAN GABRIEL RIVER FREEWAY (605) BETWEEN SAN DIEGO  
FREEWAY (405) AND KATELLA AVENUE

DATE OF SURVEY: FEBRUARY 2019		BY: JIRUSSO AND PART
-------------------------------	--	----------------------

DATE OF SURVEY: FEBRUARY, 2015	BY: GROSSE AND PAUL
TOPOGRAPHIC MAPPING	BY: R. BELTRAN

OFFICE CHECK	BY: M. LAFONTAINE, PLS
--------------	------------------------

FIELD CHECK	BY: J.RUSSO AND PARY
-------------	----------------------

SCALE: 1" = 30'    W.O.# EF21451    PID 1920PW-IN  
FILE:ROSSMOOR RETARDING BASIN TOPO.DWG

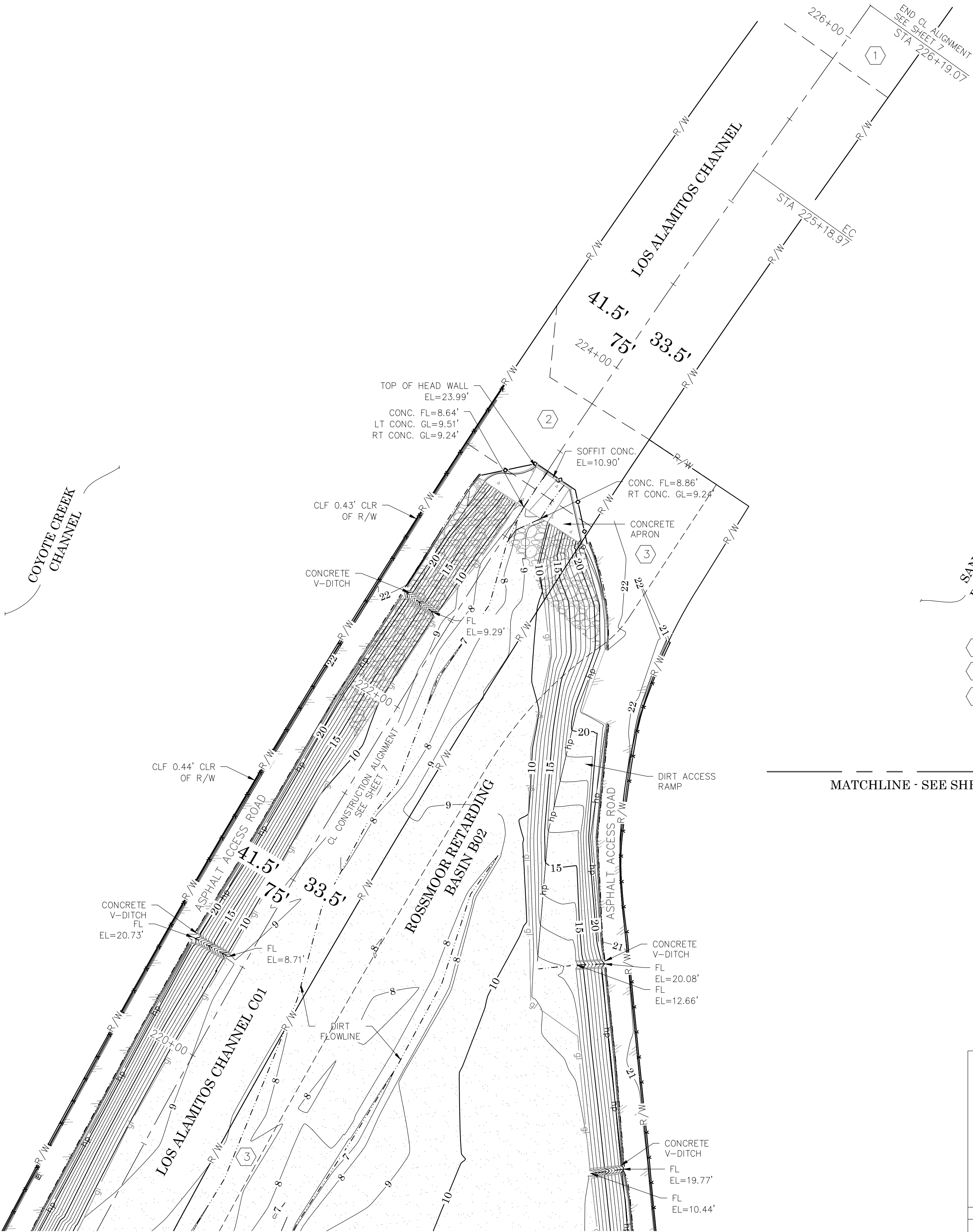
SHEET NO.



LEGEND

SYMBOL		LINE PATTERN KEY	
DGT	Gate, Double	[Symbol]	Building Outline
SGT	Gate, single	[Symbol]	Centerline
GRI	Grate Inlet	[Symbol]	Edge of Conc
MHSD	Manhole Storm Drain	[Symbol]	Edge of Asphalt Pavement
PBXTL	Pull Box Telephone	[Symbol]	Fence Chain Link
PPO	Pipe Outlet/Inlet	[Symbol]	Flowline
PST	Post	[Symbol]	Hinge Point
VLTUN	Vault, Undefined	[Symbol]	Wall, Concrete
VLVGA	Valve Gas		
UGOWD	Utility Pole 2LT-UG Wood		

ABBREVIATIONS		AREA PATTERN KEY	
FL	FLOW LINE	[Pattern]	Concrete
FS	FINISHED SURFACE	[Pattern]	Dirt
PVC	Polyvinylchloride Pipe	[Pattern]	Rip Rap
RCP	Reinforced Concrete Pipe		
TW	Top of Wall		
ENC	Encroachment		
CLR	Clear		
CLF	Chain Link Fence		
R/W	Right of Way		
P/L	Property Line		
ESMT	Easement		



- 1 ACCESS EASEMENT TO THE STATE OF CALIFORNIA (R30)
- 2 ACCESS EASEMENT TO SOUTHERN CALIFORNIA EDISON CO. (R32)
- 3 ACCESS EASEMENT TO SOUTHERN CALIFORNIA EDISON CO. (R31)  
APN: 7235-028-802

MATCHLINE - SEE SHEET 16



CONTOUR INTERVAL =1'

U.S. Survey  
Foot

OC Public Works/Engineering Services  
OC Survey/Field Services  
Boundary Analysis & Mapping

			COUNTY OF ORANGE OC PUBLIC WORKS/ENGINEERING SERVICES OC SURVEY/FIELD SERVICES/BOUNDARY ANALYSIS & MAPPING		
			ROSSMOOR RETARDING BASIN B01 & LOS ALAMITOS CHANNEL C02		
			LOCATION: ALONG SAN GABRIEL RIVER FREEWAY (605) BETWEEN SAN DIEGO FREEWAY (405) AND KATELLA AVENUE		
			DATE OF SURVEY: FEBRUARY, 2019	BY: J.RUSSO AND PARTY	SHEET NO.  17 <sup>of</sup> 17
			TOPOGRAPHIC MAPPING	BY: R. BELTRAN	
			OFFICE CHECK	BY: M. LAFONTAINE, PLS	
			FIELD CHECK	BY: J.RUSSO AND PARY	
MARK	DATE	ITEM	SCALE: 1" = 30'	W.O.# EF21451	PID 1920PW-IN0015
			FILE:ROSSMOOR RETARDING BASIN TOPO.DWG		
			REVISIONS		