



OC PUBLIC WORKS DEPARTMENT
JAMES TREADAWAY, DIRECTOR OF PUBLIC WORKS
KEVIN HILLS, COUNTY SURVEYOR



REDHILL AVE
ROAD MAINTENANCE

LOCATION MAP



N.T.S.

FOUND CGPS "BLSA"
N: 2239164.39'
E: 6021324.82'
THIS IS A CONTINUOUS GPS STATION
(CGPS) AND IS PART OF THE CALIFORNIA
SPATIAL REFERENCE NETWORK (CSRN),
FROM WHICH DATA CAN BE DOWNLOADED
HERE: [HTTP://SOPACCSRC.UCSD.EDU/](http://SOPACCSRC.UCSD.EDU/).

N66°06'41"E 54,786.30'
BASIS OF BEARING

FOUND CGPS "CCCS"
N: 2161350.67'
E: 6071417.81'
THIS IS A CONTINUOUS GPS STATION
(CGPS) AND IS PART OF THE CALIFORNIA
SPATIAL REFERENCE NETWORK (CSRN),
FROM WHICH DATA CAN BE DOWNLOADED
HERE: [HTTP://SOPACCSRC.UCSD.EDU/](http://SOPACCSRC.UCSD.EDU/).



BASIS OF BEARINGS

THE BASIS OF BEARINGS FOR THIS SURVEY IS BASED ON THE CALIFORNIA COORDINATE SYSTEM (CCS83), ZONE VI, NAD 83, OCS (2017.50) EPOCH ADJUSTMENT, AS DETERMINED LOCALLY BY A LINE BETWEEN CONTINUOUS GLOBAL POSITIONING STATIONS CGPS STATIONS (BLSA) AND (CCCS) BEING NORTH 66°06'41" EAST AS DERIVED FROM THE COORDINATES PUBLISHED BY THE CALIFORNIA SPATIAL REFERENCE CENTER (CSRC) ALONG WITH DATA SHEETS ON FILE IN THE OFFICE OF THE ORANGE COUNTY SURVEYOR.

HORIZONTAL DATUM

COORDINATES SHOWN ARE BASED ON THE CALIFORNIA COORDINATE SYSTEM (CCS83), ZONE VI, NAD 83, OCS (2017.50) EPOCH ADJUSTMENT.
ALL DISTANCES SHOWN ARE GRID, UNLESS OTHERWISE NOTED. TO OBTAIN GROUND DISTANCES MULTIPLY GRID BY A COMBINED FACTOR OF 1.00002286.
COMBINATION FACTOR WAS HELD AT: #3192
N: 2221491.58' E: 6092079.57' ELEVATION= 187.79'

VERTICAL DATUM

O.C.S. BM. 3A-109-79 ELEV. = 197.328' YEAR LEVELED: 2015
NAVD 1988 (O.C.S. 1995 ADJUSTMENT)
DESCRIPTION: MONUMENT IS SET IN KNOWN SUBSIDENCE ZONE AND MAY NOT FIT ADJACENT BENCHMARKS. DESCRIBED BY OCS 2002 - FOUND 3 3/4" OCS ALUMINUM BENCHMARK DISK STAMPED "3A-109-79", SET IN THE SOUTHEASTERLY CORNER OF A 4 FT BY 4.5 FT. CONCRETE CATCH BASIN. MONUMENT IS LOCATED IN THE SOUTHEASTERLY CORNER OF THE INTERSECTION OF 17TH STREET AND NEWPORT AVENUE, 48 FT. SOUTHEASTERLY OF THE CENTERLINE OF NEWPORT AVENUE AND 60 FT. SOUTHWESTERLY OF THE CENTERLINE OF EL CAMINO LANE. MONUMENT IS SET LEVEL WITH THE SIDEWALK.

NOTES

THE SURVEY INFORMATION SHOWN HEREON IS TO BE USED FOR TOPOGRAPHIC RELATIONSHIPS ONLY AND IS NOT INTENDED FOR LAND ACQUISITION OR BOUNDARY PURPOSES.
PARCELS SHOWN WITHOUT BEARING AND DISTANCES ARE FOR GRAPHICAL PURPOSES.

SHEET INDEX

SHEET	NO.	DESCRIPTION
SHEET 1	1	TITLE SHEET
SHEET 2	2	CENTERLINE ESTABLISHMENT
SHEETS 3-4	3-4	TOPOGRAPHIC MAP
SHEETS 5	5	PROFILE SHEET

PURPOSE OF SURVEY

THE PURPOSE OF THE SURVEY IS TO PROVIDE A TOPOGRAPHIC SURVEY ALONG THIS PORTION OF ROAD TO IDENTIFY LOW AND HIGH GRADE POINTS WITHIN ROAD CURB AND GUTTER FLOW LINE.

SENIOR LAND SURVEYOR'S CERTIFICATE:

THIS MAP CORRECTLY REPRESENTS A SURVEY MADE BY ME OR UNDER MY DIRECTION IN CONFORMANCE WITH REQUIREMENTS OF THE PROFESSIONAL LAND SURVEYOR'S ACT; THIS 10TH DAY OF MARCH, 2021.

ELLIOTT MEDINA, PLS. SENIOR LAND SURVEYOR



DEPUTY COUNTY SURVEYOR'S STATEMENT:

THIS MAP HAS BEEN EXAMINED IN ACCORDANCE WITH THE PROFESSIONAL LAND SURVEYOR'S ACT; THIS 10TH DAY OF MARCH, 2021.

WADE WEAVER, PLS. DEPUTY COUNTY SURVEYOR



TOPOGRAPHIC MAPPING PROJECT

			COUNTY OF ORANGE OC PUBLIC WORKS OC SURVEY/FIELD SERVICES/BOUNDARY ANALYSIS & MAPPING				
			REDHILL AVE ROAD MAINTENANCE				
			TITLE SHEET				
			PROJECT LIMITS: REDHILL AVE FROM STOCKBRIDGE ROAD TO MILLBROOK ROAD				
			DATE OF SURVEY: 01/07/2021		BY: R. MACIAS, PLS & CREW		SHEET NO. 1 of 5
			MAPPING		BY: I. ISLAS		
			OFFICE CHECK		BY: E. MEDINA, PLS		
			FIELD CHECK		BY: R. MACIAS, PLS		
			SCALE: N.T.S.		W.O. #ER19311		
			FILE: REDHILL AND STOCKBRIDGE_TPO_2021.DWG		FILE # 1920PW-OP0022		
MARK	DATE	ITEM	REVISIONS				

MONUMENT NOTES

- 1

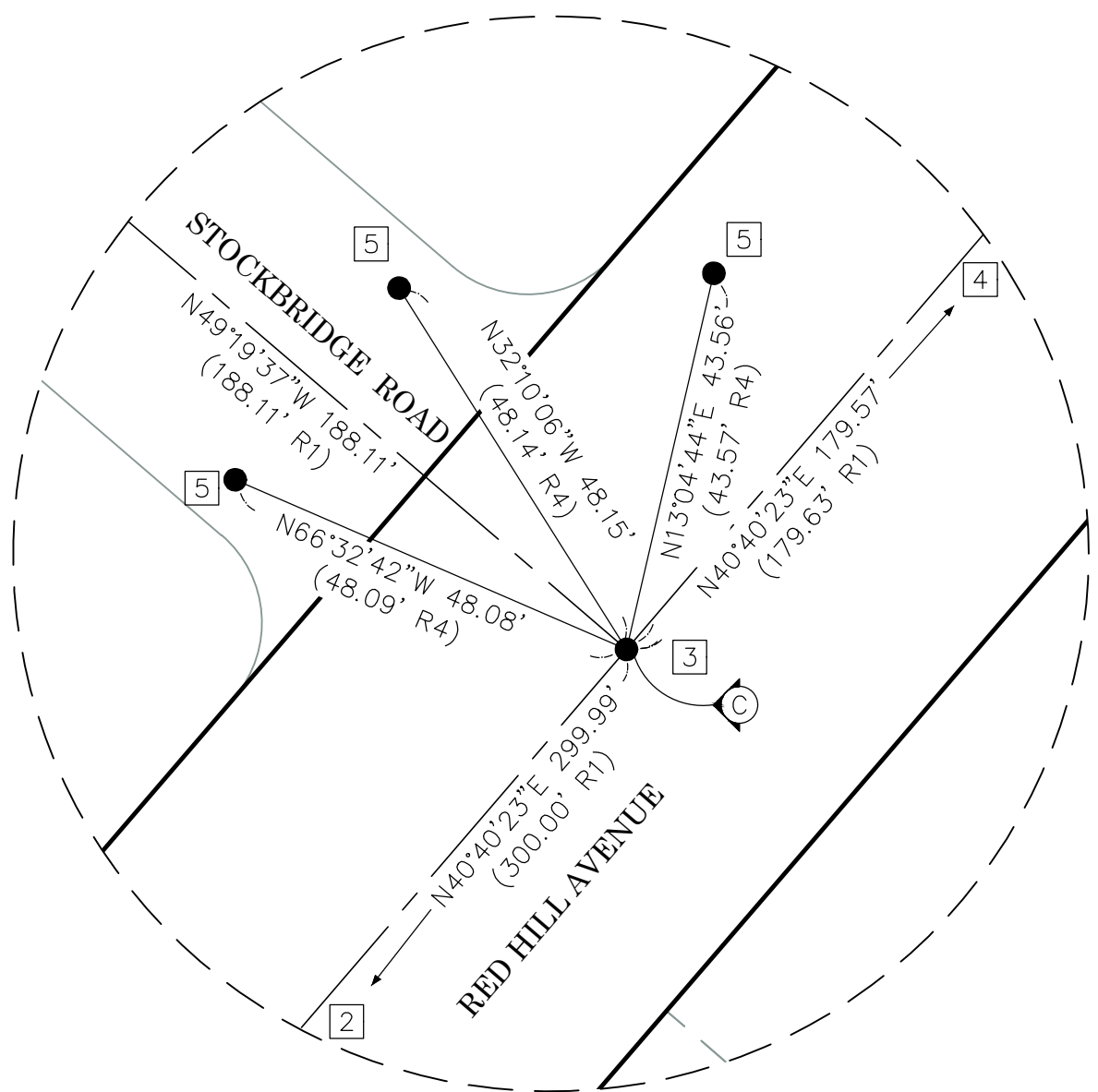
FOUND MAG NAIL AND WASHER STAMPED "BRUCE HALL LS 4743", FITS TIES, IN LIEU OF 1 1/2" I.P. WITH NAIL AND TAG STAMPED "RCE 11066" PER (R2) AND (R6). THE L.S. OF RECORD WAS CONTACTED VIA EMAIL AND HE RESPONDED THAT A CORNER RECORD WILL BE SUBMITTED AT A LATER DATE. ACCEPTED AS CENTERLINE INTERSECTION OF SKYLINE DRIVE AND RED HILL AVENUE.
- 2

FOUND MAG NAIL AND WASHER STAMPED "LS 5411", PER (R3), FLUSH IN ASPHALT. HELD FOR LINE FOR THE CENTERLINE OF MILLBROOK (PRIVATE) ROAD. MONUMENT IS 0.04' W'LY FROM THE CENTERLINE OF RED HILL AVENUE.
- 3

FOUND MAG NAIL AND WASHER STAMPED "LS 5411", PER (R4), FLUSH IN ASPHALT. S87°31'11"W .08' FROM THE CENTERLINE INTERSECTION OF STOCKBRIDGE ROAD AND RED HILL AVENUE.
- 4

FOUND MAG NAIL AND WASHER STAMPED "LS 5411", PER (R5), FLUSH IN ASPHALT, ACCEPTED AS THE CENTERLINE INTERSECTION OF LA LOMA ROAD AND RED HILL AVENUE.
- 5

FOUND LEAD AND TACK PER (R4), FLUSH IN CONCRETE CURB, ACCEPTED AS TIE PER (R4)



DETAIL A
N.T.S.

ESTABLISHMENT NOTES

- A

ESTABLISHED THE CENTERLINE OF RED HILL AVENUE BY HOLDING A LINE BETWEEN MONUMENTS 1 AND 4
- B

ESTABLISHED THE CENTERLINE INTERSECTION OF MILLBROOK (PRIVATE) ROAD AND REDHILL AVENUE BY HOLDING A LINE S'LY FROM MONUMENT NOTE 2 PERPENDICULAR TO ESTABLISHMENT NOTE A
- C

ESTABLISHED THE CENTERLINE INTERSECTION OF RED HILL AVENUE AND STOCKBRIDGE (PRIVATE) ROAD BY TIES PER (R4).ACCEPTED AS BEING ON LINE WITH ESTABLISHMENT NOTE A
- D

ESTABLISHED THE CENTERLINE OF MILLBROOK (PRIVATE) ROAD BY HOLDING RECORD ANGLE AND DISTANCE NW'LY FROM ESTABLISHMENT NOTE B PER (R1).
- E

ESTABLISHED THE CENTERLINE OF STOCKBRIDGE (PRIVATE) ROAD BY HOLDING RECORD ANGLE AND DISTANCE NW'LY FROM ESTABLISHMENT NOTE C PER (R1).
- F

ESTABLISHED THE NW'LY RIGHT OF WAY OF RED HILL AVENUE BY HOLDING A LINE PARALLEL WITH, AND A RECORD DISTANCE OF 30' PER (R1) FROM LINE ESTABLISHMENT NOTE A
- G

ESTABLISHED THE SE'LY RIGHT OF WAY OF RED HILL AVENUE BY HOLDING A LINE PARALLEL WITH, AND A RECORD DISTANCE OF 30' PER (R1) FROM LINE ESTABLISHMENT NOTE A

REFERENCES

- (R1) = TRACT NO. 8606 M.M. 357/7-8
(R2) = CORNER RECORD, C.R. 2012-1735
(R3) = CORNER RECORD C.R. 2006-1151
(R4) = CORNER RECORD, C.R. 2006-1148B
(R5) = CORNER RECORD, C.R. 2006-1147B
(R6) = RECORD OF SURVEY, RSB 130/47
(R7) = TRACT NO. 4316 M.M. 185/10-11
(R8) = IRVINE'S SUBDIVISION M.M. 1-88
(R9) = RECORD OF SURVEY, RSB 69/9

NOTES

STREET R/W SHOWN IN BOLD ESTABLISHED BY SURVEY.
THE LOT LINES ARE FOR GRAPHICAL PRESENTATION ONLY.

BASIS OF BEARINGS

THE BASIS OF BEARINGS FOR THIS SURVEY IS BASED ON THE CALIFORNIA COORDINATE SYSTEM (CCS83), ZONE VI, NAD 83, OCS (2017.50) EPOCH ADJUSTMENT, AS DETERMINED LOCALLY BY A LINE BETWEEN CONTINUOUS GLOBAL POSITIONING STATIONS CGPS STATIONS (BLSA) AND (CCCS) BEING NORTH 66°06'41" EAST AS DERIVED FROM THE COORDINATES PUBLISHED BY THE CALIFORNIA SPATIAL REFERENCE CENTER (CSRC) ALONG WITH DATA SHEETS ON FILE IN THE OFFICE OF THE ORANGE COUNTY SURVEYOR.

HORIZONTAL DATUM

COORDINATES SHOWN ARE BASED ON THE CALIFORNIA COORDINATE SYSTEM (CCS83), ZONE VI, NAD 83, OCS (2017.50) EPOCH ADJUSTMENT.

ALL DISTANCES SHOWN ARE GRID, UNLESS OTHERWISE NOTED. TO OBTAIN GROUND DISTANCE MULTIPLY A GRID DISTANCE BY 1.000022861.

COMBINATION FACTOR WAS HELD AT POINT NUMBER 3192 N:2221491.58', E:6092079.57', ELEVATION= 187.79' (SEE SHEET 1)

RECORD DISTANCES SHOWN HEREON ARE AS THEY APPEAR ON THE DOCUMENT OF RECORD. DISTANCES MAY BE EITHER GRID OR GROUND, AS PER SAID RECORD.

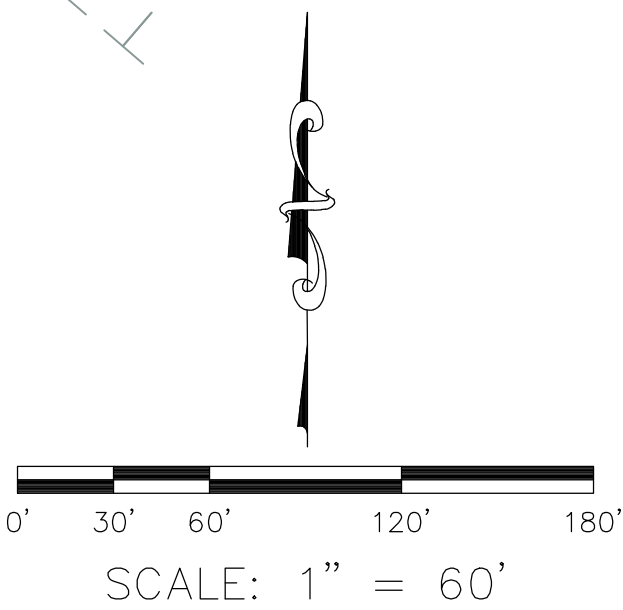
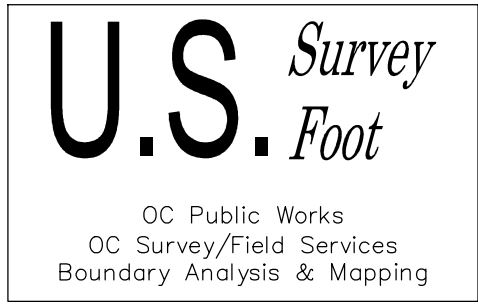
ALL DISTANCES ARE BASED ON THE U.S. SURVEY FOOT.

LEGEND

- FOUND MONUMENT AS NOTED
- ⊗

SEARCHED FOUND NOTHING
- CFR

CALCULATED FROM RECORD



			COUNTY OF ORANGE OC PUBLIC WORKS OC SURVEY/FIELD SERVICES/BOUNDARY ANALYSIS & MAPPING		
			REDHILL AVE. ROAD MAINTENANCE		
			CENTERLINE ESTABLISHMENT		
			PROJECT LIMITS: REDHILL AVE FROM STOCKBRIDGE ROAD TO MILLBROOK ROAD		
			DATE OF SURVEY:1/07/2021 MAPPING	BY:R.MACIAS, PLS & CREW BY:R. BELTRAN	SHEET NO. 2 of 5
			OFFICE CHECK	BY:E.MEDINA, PLS	
			FIELD CHECK	BY:R.MACIAS, PLS	
MARK	DATE	ITEM	SCALE:1" = 60'	W.O. #ER19311	FILE #1920PW-OP0022
		REVISIONS	FILE:STOCKBRIDGE ROAD_BOUNDARY_2021.DWG		

SEE SHEET 4

SYMBOL

- Bush
- Control Point
- Manhole Sewer
- Manhole Storm Drain
- Pipe Inlet/Outlet
- Sign Post
- Tree
- Valve Water
- Vent Pipe

AREA PATTERN KEY

- Concrete
- Dirt
- Grass

ABBREVIATION

AC	Asphalt Concrete
BC	Beginning of Curve
CL	Centerline
CLR	Clearance
CONC	Concrete
CP	Control Point
EL	Elevation
ENC	Encroachment
EC	End of Curve
FL	Flowline
FD	Found
INV	Invert
TC	Top of Curb

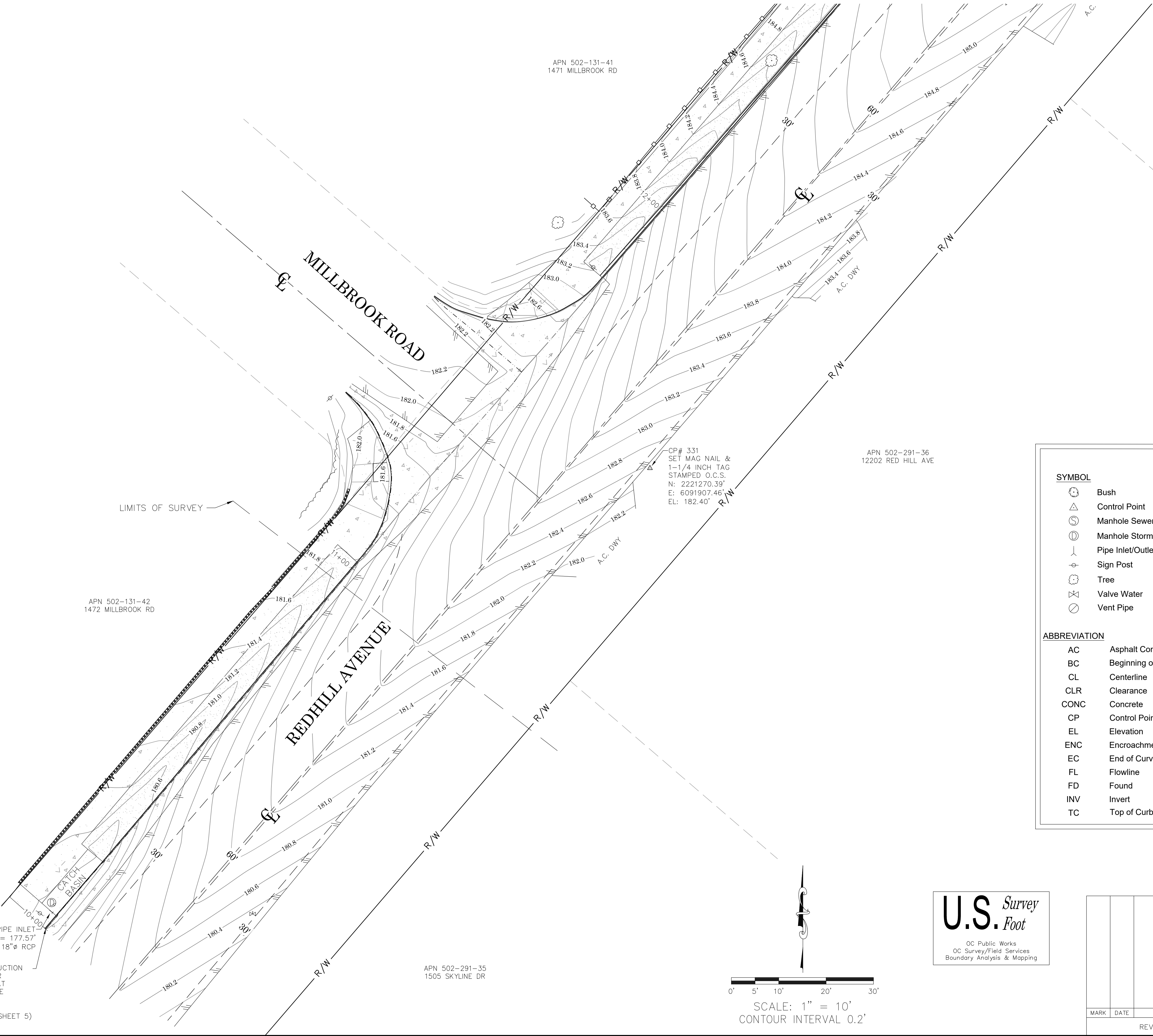
LINE PATTERN KEY

	Block Wall
	Bush Row Outline
	Centerline
	Edge of Concrete
	Edge of Asphalt Pavement
	Fence Wood
	Flowline
	Hinge Point
	Right of Way
	Striping

				COUNTY OF ORANGE OC PUBLIC WORKS OC SURVEY/FIELD SERVICES/BOUNDARY ANALYSIS & MAPPING		
				REDHILL AVE ROAD MAINTENANCE		
				TOPOGRAPHIC MAP		
				PROJECT LIMITS: REDHILL AVE FROM STOCKBRIDGE ROAD TO MILLBROOK ROAD		
				DATE OF SURVEY: 01/07/2021	BY: R. MACIAS, PLS & CREW	SHEET NO. 3 of 5
				MAPPING	BY: I. ISLAS	
		OFFICE CHECK	BY: E. MEDINA, PLS			
		FIELD CHECK	BY: R. MACIAS, PLS			
		SCALE: 1"=10'	W.O. # ER19311	FILE # 1920PW-OP0022		
MARK	DATE	ITEM	REVISIONS			
			FILE: REDHILL AND STOCKBRIDGE_TOPO_2021.DWG			

U.S. Survey
Foot
OC Public Works
OC Survey/Field Services
Boundary Analysis & Mapping

SCALE: 1" = 10'
CONTOUR INTERVAL 0.2'



BEGIN CONSTRUCTION
ALIGNMENT PER
THIS SURVEY AT
CONC. FLOWLINE
STA: 10+00
EL: 179.40 FL
(SEE PROFILE SHEET 5)

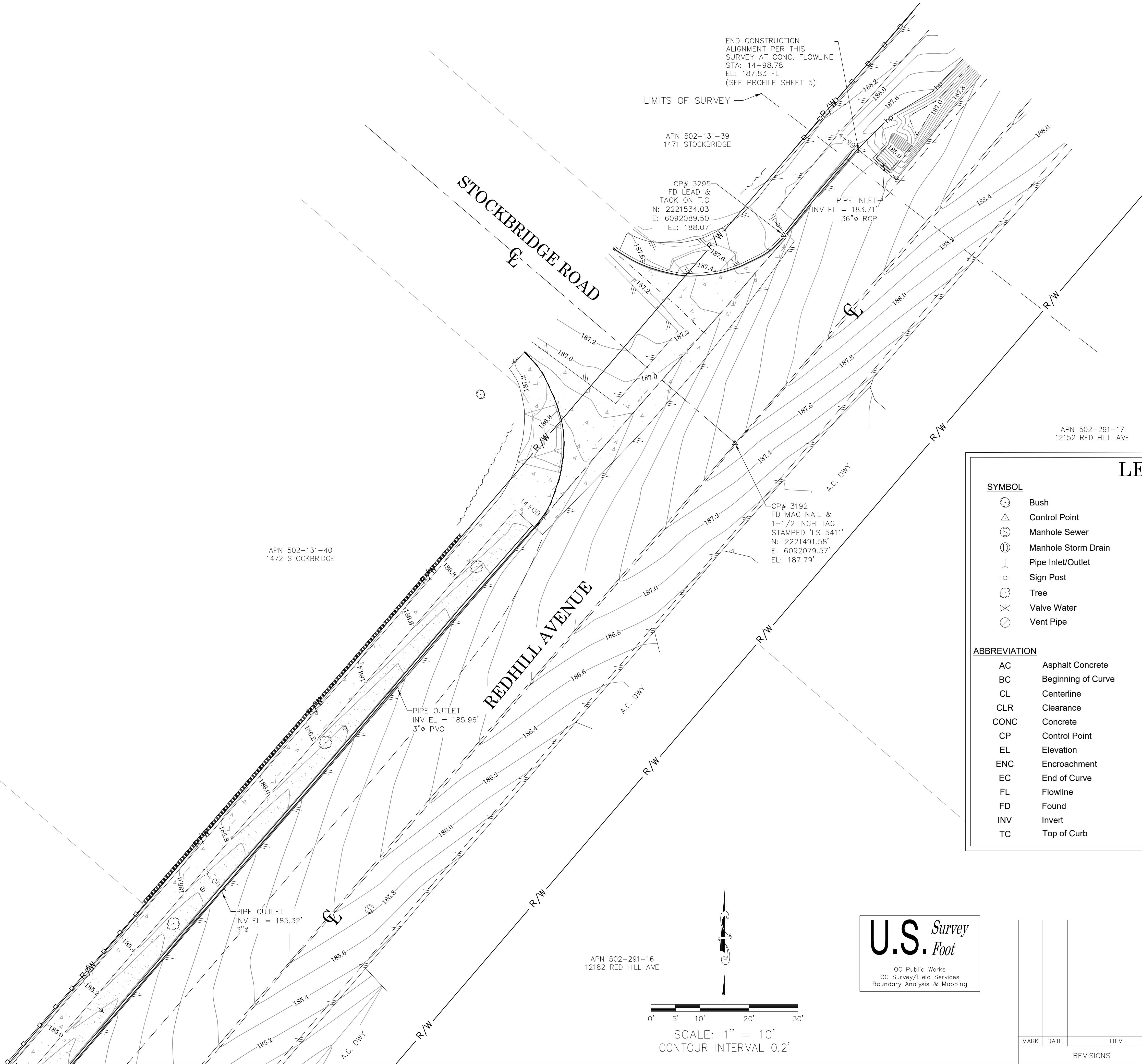
APN 502-131-42
1472 MILLBROOK RD

APN 502-131-41
1471 MILLBROOK RD

APN 502-291-36
12202 RED HILL AVE

APN 502-291-35
1505 SKYLINE DR

SEE SHEET 3



LEGEND

SYMBOL

- Bush
- Control Point
- Manhole Sewer
- Manhole Storm Drain
- Pipe Inlet/Outlet
- Sign Post
- Tree
- Valve Water
- Vent Pipe

AREA PATTERN KEY

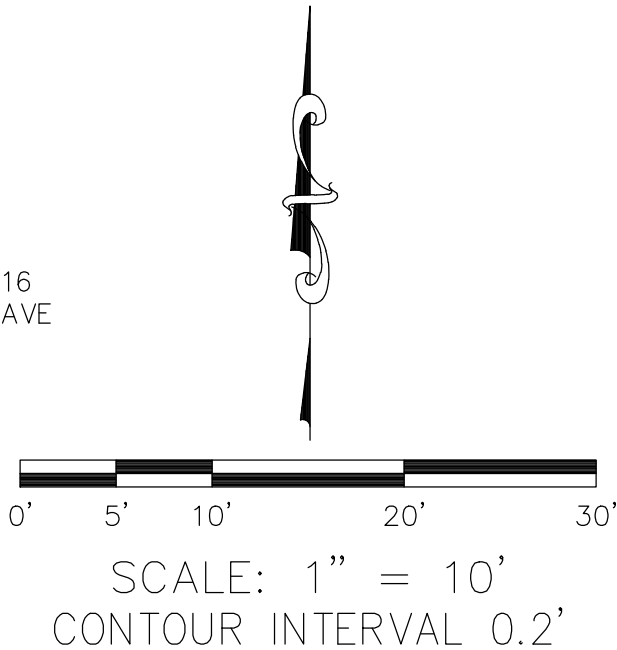
- Concrete
- Dirt
- Grass

ABBREVIATION

- AC Asphalt Concrete
- BC Beginning of Curve
- CL Centerline
- CLR Clearance
- CONC Concrete
- CP Control Point
- EL Elevation
- ENC Encroachment
- EC End of Curve
- FL Flowline
- FD Found
- INV Invert
- TC Top of Curb

LINE PATTERN KEY

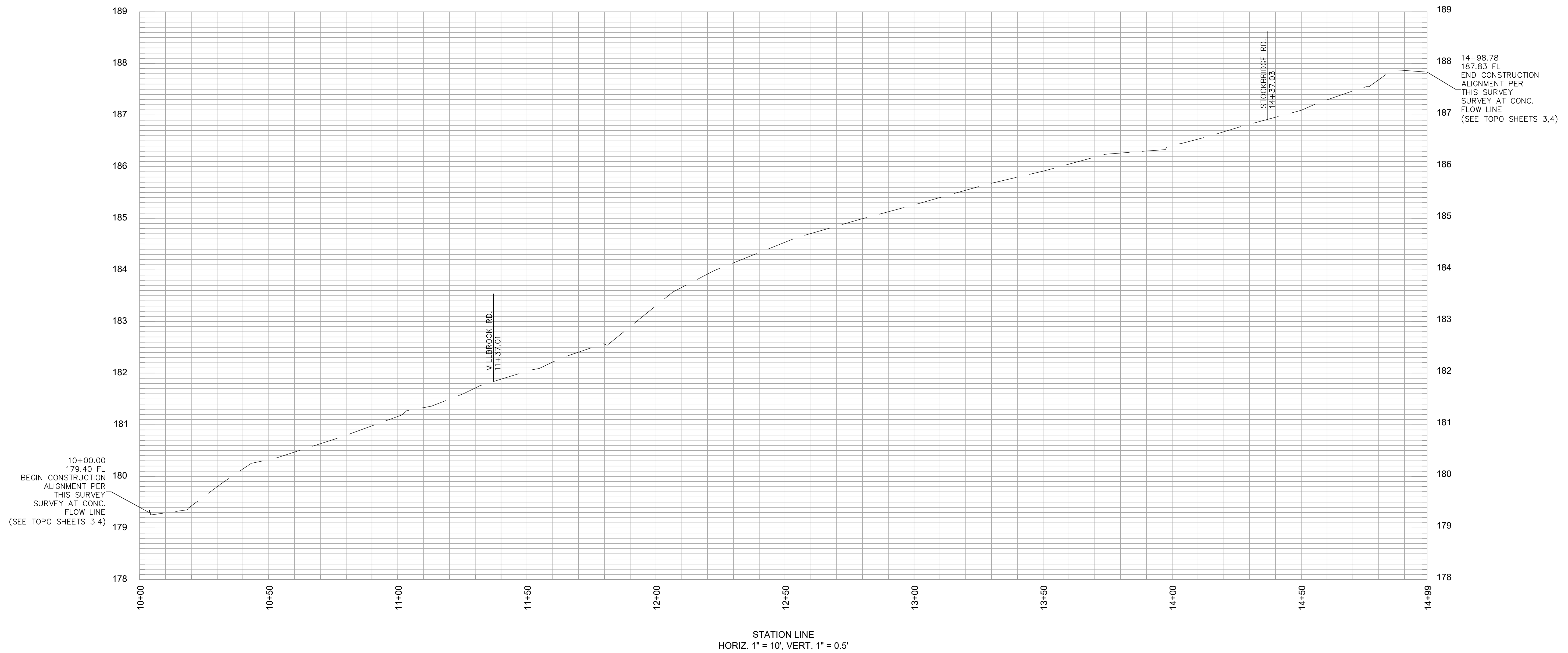
- Block Wall
- Bush Row Outline
- Centerline
- Edge of Concrete
- Edge of Asphalt Pavement
- Fence Wood
- Flowline
- Hinge Point
- Right of Way
- Striping



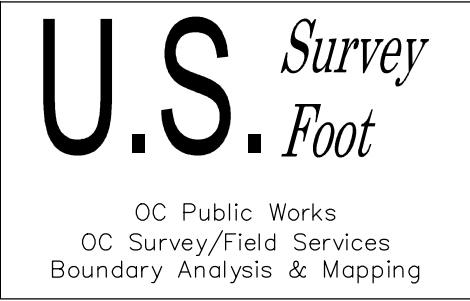
U.S. Survey
Foot
OC Public Works
OC Survey/Field Services
Boundary Analysis & Mapping

COUNTY OF ORANGE OC PUBLIC WORKS OC SURVEY/FIELD SERVICES/BOUNDARY ANALYSIS & MAPPING			
REDHILL AVE ROAD MAINTENANCE			
TOPOGRAPHIC MAP			
PROJECT LIMITS: REDHILL AVE FROM STOCKBRIDGE ROAD TO MILLBROOK ROAD			
DATE OF SURVEY: 01/07/2021		BY: R. MACIAS, PLS & CREW	
MAPPING		BY: L. ISLAS	
OFFICE CHECK		BY: E. MEDINA, PLS	
FIELD CHECK		BY: R. MACIAS, PLS	
SCALE: 1"=10'		W.O. #ER19311	FILE #1920PW-OP0022
FILE: REDHILL AND STOCKBRIDGE_TOPO_2021.DWG			
MARK	DATE	ITEM	
REVISIONS			

PROFILE OF THE EXISTING N'LY CONCRETE FLOWLINE OF
REDHILL AVE



NOTE: THE ALIGNMENT FOR THIS PROFILE WAS DEVELOPED HOLDING A
STATION OF 10+00 AT THE S'LY END OF THE EXISTING CONCRETE
FLOWLINE ON THE N'LY SIDE OF REDHILL AVE AND INCREASING NE'LY
AS SHOWN ON SHEETS 3,4



			COUNTY OF ORANGE OC PUBLIC WORKS OC SURVEY/FIELD SERVICES/BOUNDARY ANALYSIS & MAPPING		
			REDHILL AVE ROAD MAINTENANCE		
			TOPOGRAPHIC MAP		
			PROJECT LIMITS: REDHILL AVE FROM STOCKBRIDGE ROAD TO MILLBROOK ROAD		
			DATE OF SURVEY: 01/07/2021	BY: R. MACIAS, PLS & CREW	SHEET NO. 5 of 5
			MAPPING	BY: L. ISLAS	
			OFFICE CHECK	BY: E. MEDINA, PLS	
			FIELD CHECK	BY: R. MACIAS, PLS	
			SCALE: 1" = XX'	W.O. #ER19311	FILE #1920PW-OP0022
			FILE: REDHILL AND STOCKBRIDGE_TOPO_2021.DWG		
MARK	DATE	ITEM	REVISIONS		